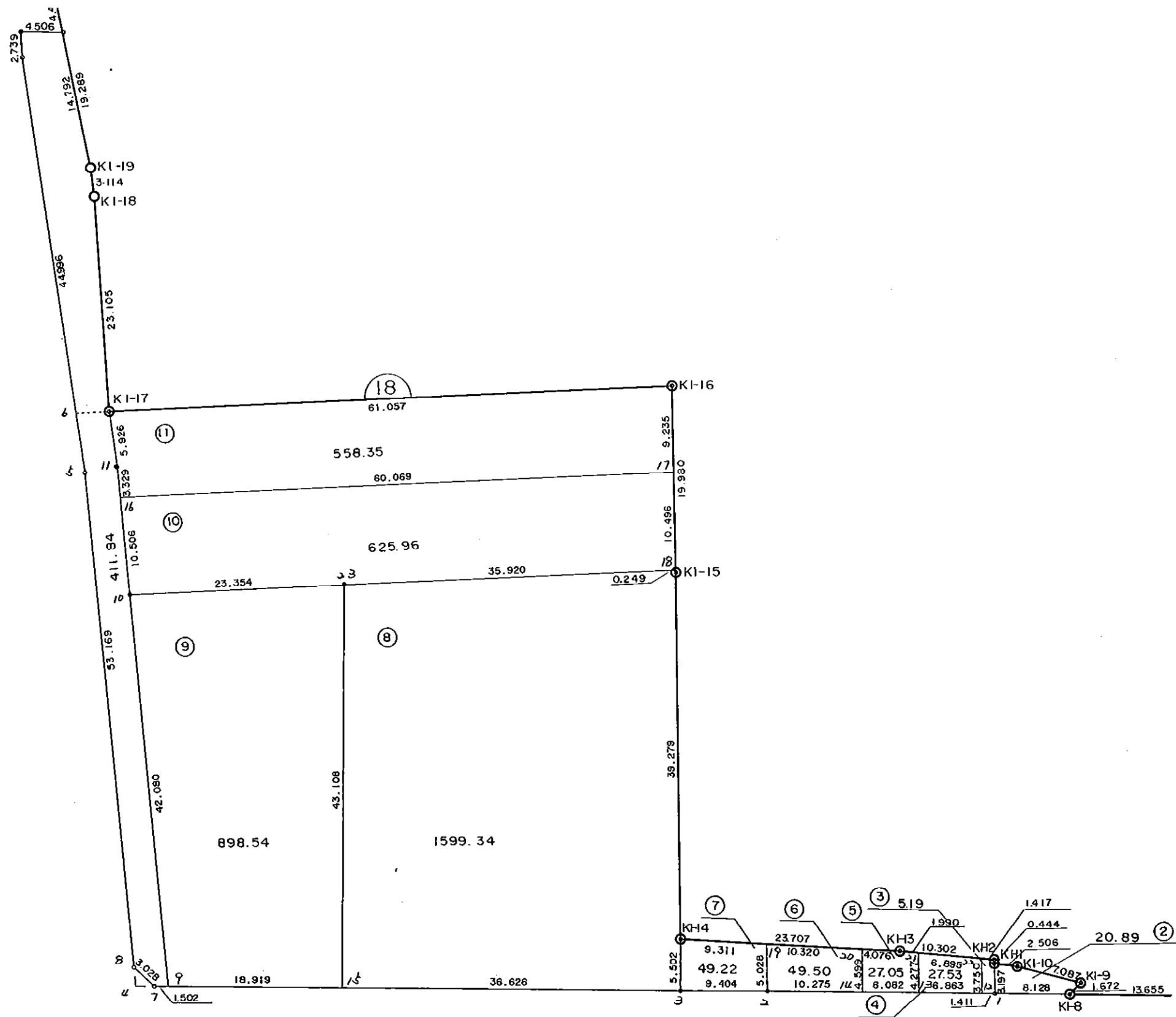


1 8 B L O C K

11 B L O C K



* * * 各筆面積 集計表 * * *

街区名・筆名	各筆面積	隅切面積
18 BLOCK	4076.75	
2 LOT	20.89	
3 LOT	5.19	
4 LOT	27.53	
5 LOT	27.05	
6 LOT	49.50	
7 LOT	49.22	
8 LOT	1599.34	
9 LOT	898.54	
10 LOT	625.96	
11 LOT	558.35	
入口	215.11	
4 スミキリ		2.06
合計 =	4076.68	2.06

* * * * * 各 筆 面 積 計 算 書 * * * * *

18 BLOCK

点 名	X	Y	(X-X0)*(YN-1-Y0)	(XN-1-X0)*(Y-Y0)
X0·Y0	- 150600.000	- 38800.000		
K1-8	- 150753.777	- 38807.273		
18-1	- 150754.406	- 38815.377	+ 1122.994838	+ 2364.628929
18-2	- 150756.346	- 38839.931	+ 2404.132442	+ 6165.585986
18-3	- 150757.175	- 38849.298	+ 6276.154925	+ 7707.545108
18-7	- 150761.764	- 38906.161	+ 7974.641672	+ 16685.855175
18-8	- 150759.917	- 38908.561	+ 16976.948637	+ 17561.261604
18-5	- 150707.645	- 38918.283	+ 11686.048845	+ 18915.462511
18-6	- 150701.379	- 38919.780	+ 11991.412257	+ 12893.718100
K1-17	- 150700.901	- 38916.237	+ 12085.921780	+ 11783.990823
K1-16	- 150692.735	- 38855.729	+ 10779.238195	+ 5623.111829
K1-15	- 150712.601	- 38853.595	+ 6275.141129	+ 4970.132325
K1-14	- 150751.692	- 38849.753	+ 8129.932740	+ 5602.237553
K1-13	- 150750.808	- 38826.062	+ 7503.150424	+ 3953.396904
K1-12	- 150750.785	- 38815.760	+ 3929.758670	+ 2376.734080
K1-11	- 150751.227	- 38815.720	+ 2383.337520	+ 2370.340200
K1-10	- 150751.330	- 38813.216	+ 2378.907600	+ 1998.616032
K1-9	- 150752.476	- 38806.222	+ 2015.122816	+ 941.575260
K1-8	- 150753.777	- 38807.273	+ 956.800494	+ 1108.957948

+114869.644984 +123023.150367

倍面積 = 8153.505383

面積 = 4076.752691

2 LOT

点 名	X	Y	(X-X0)*(YN-1-Y0)	(XN-1-X0)*(Y-Y0)
X0·Y0	- 150700.000	- 38800.000		
K1-8	- 150753.777	- 38807.273		
18-1	- 150754.406	- 38815.377	+ 395.694838	+ 826.928929
K1-11	- 150751.227	- 38815.720	+ 787.717579	+ 855.262320
K1-10	- 150751.330	- 38813.216	+ 806.907600	+ 677.016032
K1-9	- 150752.476	- 38806.222	+ 693.522816	+ 319.375260
K1-8	- 150753.777	- 38807.273	+ 334.600494	+ 381.657948

+ 3018.443327 + 3060.240489

倍面積 = 41.797162

面積 = 20.898581

3 LOT

点 名	X	Y	(X-X0)*(YN-1-Y0)	(XN-1-X0)*(Y-Y0)
X0·Y0	- 150700.000	- 38800.000		
18-1	- 150754.406	- 38815.377		
18-12	- 150754.517	- 38816.784	+ 838.307909	+ 913.150304
18-22	- 150750.788	- 38817.177	+ 852.425792	+ 936.438509

* * * * * 各 筆 面 積 計 算 書 * * * * *

点 名	X	Y	(X-X0)*(YN-1-Y0)	(XN-1-X0)*(Y-Y0)
K1-12	- 150750.785	- 38815.760	+ 872.333945	+ 800.418880
K1-11	- 150751.227	- 38815.720	+ 807.337520	+ 798.340200
18-1	- 150754.406	- 38815.377	+ 855.262320	+ 787.717579
			+ 4225.667486	+ 4236.065472
		倍面積	= 10.397986	
		面積	= 5.198993	

4 LOT

点 名	X	Y	(X-X0)*(YN-1-Y0)	(XN-1-X0)*(Y-Y0)
X0·Y0	- 150700.000	- 38800.000		
18-12	- 150754.517	- 38816.784		
18-13	- 150755.058	- 38823.626	+ 924.093472	+ 1288.018642
18-21	- 150750.804	- 38824.072	+ 1200.295304	+ 1325.356176
18-22	- 150750.788	- 38817.177	+ 1222.568736	+ 872.660308
18-12	- 150754.517	- 38816.784	+ 936.438509	+ 852.425792
			+ 4283.396021	+ 4338.460918
		倍面積	= 55.064897	
		面積	= 27.532448	

5 LOT

点 名	X	Y	(X-X0)*(YN-1-Y0)	(XN-1-X0)*(Y-Y0)
X0·Y0	- 150700.000	- 38800.000		
18-13	- 150755.058	- 38823.626		
18-14	- 150755.537	- 38829.688	+ 1312.117162	+ 1634.561904
18-20	- 150750.960	- 38830.136	+ 1512.900480	+ 1673.663032
K1-13	- 150750.808	- 38826.062	+ 1531.149888	+ 1328.119520
18-21	- 150750.804	- 38824.072	+ 1324.053848	+ 1223.050176
18-13	- 150755.058	- 38823.626	+ 1325.356176	+ 1200.295304
			+ 7005.577554	+ 7059.689936
		倍面積	= 54.112382	
		面積	= 27.056191	

6 LOT

点 名	X	Y	(X-X0)*(YN-1-Y0)	(XN-1-X0)*(Y-Y0)
X0·Y0	- 150700.000	- 38800.000		
18-14	- 150755.537	- 38829.688		
18-2	- 150756.346	- 38839.931	+ 1672.800048	+ 2217.647947
18-19	- 150751.345	- 38840.448	+ 2050.257195	+ 2279.083008
18-20	- 150750.960	- 38830.136	+ 2061.230080	+ 1547.332920
18-14	- 150755.537	- 38829.688	+ 1673.663032	+ 1512.900480
			+ 7457.950355	+ 7556.964355
		倍面積	= 99.014000	
		面積	= 49.507000	

* * * * * 各 筆 面 積 計 算 書 * * * * *

7 LOT

点 名	X	Y	(X-X0)*(YN-1-Y0)	(XN-1-X0)*(Y-Y0)
X0·Y0	- 150700.000	- 38800.000		
18-2	- 150756.346	- 38839.931		
18-3	- 150757.175	- 38849.298	+ 2283.054925	+ 2777.745108
K1-14	- 150751.692	- 38849.753	+ 2548.312216	+ 2844.627775
18-19	- 150751.345	- 38840.448	+ 2554.567785	+ 2090.838016
18-2	- 150756.346	- 38839.931	+ 2279.083008	+ 2050.257195
			+ 9665.017934	+ 9763.468094
		倍面積	= 98.450160	
		面積	= 49.225080	

8 LOT

点 名	X	Y	(X-X0)*(YN-1-Y0)	(XN-1-X0)*(Y-Y0)
X0·Y0	- 150700.000	- 38800.000		
18-3	- 150757.175	- 38849.298		
18-15	- 150760.121	- 38885.806	+ 2963.845058	+ 4905.958050
18-23	- 150717.148	- 38889.221	+ 1471.401288	+ 5364.055741
18-18	- 150712.353	- 38853.622	+ 1102.147013	+ 919.510056
K1-15	- 150712.601	- 38853.595	+ 675.690822	+ 662.059035
K1-14	- 150751.692	- 38849.753	+ 2770.432740	+ 626.937553
18-3	- 150757.175	- 38849.298	+ 2844.627775	+ 2548.312216
			+ 11828.144696	+ 15026.832651
		倍面積	= 3198.687955	
		面積	= 1599.343977	

9 LOT

点 名	X	Y	(X-X0)*(YN-1-Y0)	(XN-1-X0)*(Y-Y0)
X0·Y0	- 150700.000	- 38800.000		
18-15	- 150760.121	- 38885.806		
18-9	- 150761.643	- 38904.664	+ 5289.339258	+ 6292.504344
18-10	- 150720.274	- 38912.365	+ 2121.957936	+ 6926.515695
18-23	- 150717.148	- 38889.221	+ 1926.835020	+ 1808.866554
18-15	- 150760.121	- 38885.806	+ 5364.055741	+ 1471.401288
			+ 14702.187955	+ 16499.287881
		倍面積	= 1797.099926	
		面積	= 898.549963	

10 LOT

点 名	X	Y	(X-X0)*(YN-1-Y0)	(XN-1-X0)*(Y-Y0)
X0·Y0	- 150700.000	- 38800.000		
18-10	- 150720.274	- 38912.365		
18-16	- 150709.943	- 38914.273	+ 1117.245195	+ 2316.770802

* * * * * 各 筆 面 積 計 算 書 * * * * *

点 名	X	Y	(X-X0)*(YN-1-Y0)	(XN-1-X0)*(Y-Y0)
18-17	- 150701.917	- 38854.743	+ 219.061341	+ 544.309649
18-18	- 150712.353	- 38853.622	+ 676.240279	+ 102.793374
18-23	- 150717.148	- 38889.221	+ 919.510056	+ 1102.147013
18-10	- 150720.274	- 38912.365	+ 1808.866554	+ 1926.835020
			+ 4740.923425	+ 5992.855858
		倍面積	= 1251.932433	
		面積	= 625.966216	

11 LOT

点 名	X	Y	(X-X0)*(YN-1-Y0)	(XN-1-X0)*(Y-Y0)
X0-Y0	- 150600.000	- 38800.000		
18-16	- 150709.943	- 38914.273		
18-11	- 150706.669	- 38914.877	+ 12189.386637	+ 12629.922011
K1-17	- 150700.901	- 38916.237	+ 11591.204177	+ 12398.884553
K1-16	- 150692.735	- 38855.729	+ 10779.238195	+ 5623.111829
18-17	- 150701.917	- 38854.743	+ 5679.732493	+ 5076.592105
18-16	- 150709.943	- 38914.273	+ 6018.609649	+ 11646.361341
			+ 46258.171151	+ 47374.871839
		倍面積	= 1116.700688	
		面積	= 558.350344	

210

点 名	X	Y	(X-X0)*(YN-1-Y0)	(XN-1-X0)*(Y-Y0)
X0-Y0	- 150700.000	- 38900.000		
18-9	- 150761.643	- 38904.664		
18-7	- 150761.764	- 38906.161	+ 288.067296	+ 379.782523
18-8	- 150759.917	- 38908.561	+ 369.148637	+ 528.761604
18-5	- 150707.645	- 38918.283	+ 65.448845	+ 1095.462511
18-6	- 150701.379	- 38919.780	+ 25.212257	+ 151.218100
K1-17	- 150700.901	- 38916.237	+ 17.821780	+ 22.390823
18-11	- 150706.669	- 38914.877	+ 108.284553	+ 13.404177
18-10	- 150720.274	- 38912.365	+ 301.616298	+ 82.462185
18-9	- 150761.643	- 38904.664	+ 762.215695	+ 94.557936
			+ 1937.815361	+ 2368.039859
		倍面積	= 430.224498	
		面積	= 215.112249	

4 スキリ

点 名	X	Y	(X-X0)*(YN-1-Y0)	(XN-1-X0)*(Y-Y0)
X0-Y0	- 150700.000	- 38900.000		
18-4	- 150761.928	- 38908.187		
18-7	- 150761.764	- 38906.161	+ 505.661868	+ 381.538408

* * * * * 各 筆 面 積 計 算 書 * * * * *

点 名	X	Y	(X-X0)*(YN-1-Y0)	(XN-1-X0)*(Y-Y0)
18-8	- 150759.917	- 38908.561	+ 369.148637	+ 528.761604
18-4	- 150761.928	- 38908.187	+ 530.165608	+ 490.540479
			+ 1404.976113	+ 1400.840491
		倍面積	= 4.135622	
		面積	= 2.067811	