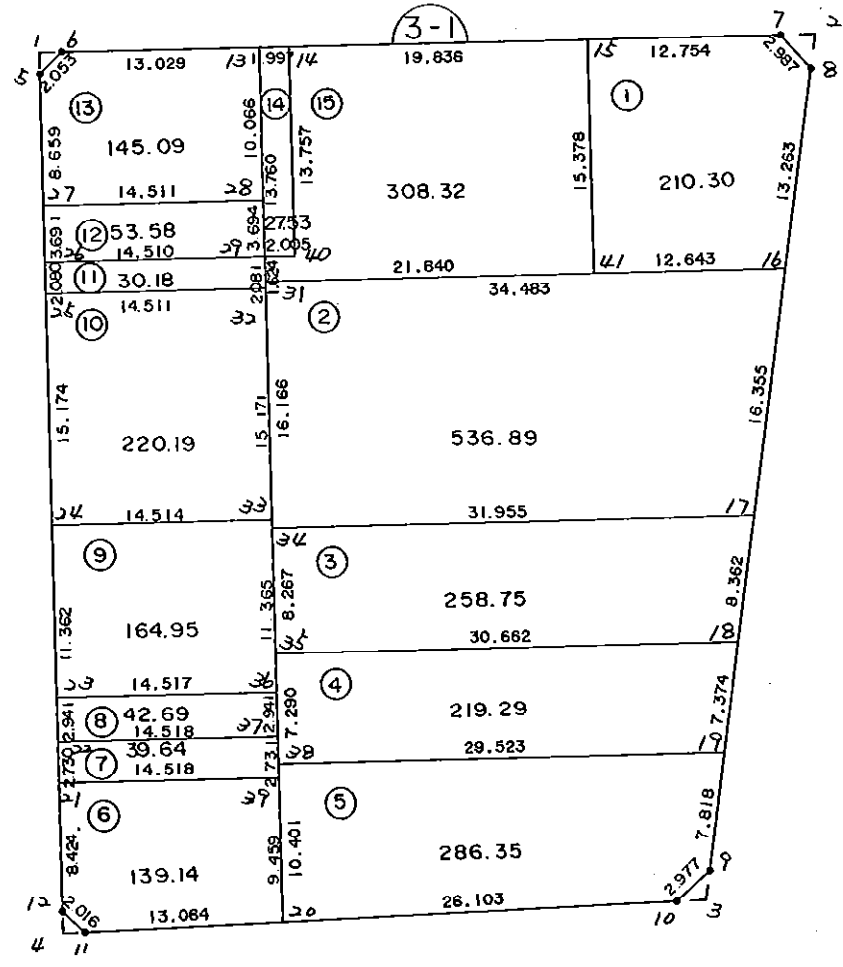


3 - 1 B L O C K



\* \* \* 各筆面積 集計表 \* \* \*

街区名・筆名	各筆面積	隔切面積
3-1 BLOCK	2682.96	
1 LOT	210.30	
2 LOT	536.89	
3 LOT	258.75	
4 LOT	219.29	
5 LOT	286.35	
6 LOT	139.14	
7 LOT	39.64	
8 LOT	42.69	
9 LOT	164.95	
10 LOT	220.19	
11 LOT	30.18	
12 LOT	53.58	
13 LOT	145.09	
14 LOT	27.53	
15 LOT	308.32	
1 スミキリ		1.05
2 スミキリ		2.60
3 スミキリ		1.84
4 スミキリ		1.04
合計 =	2682.89	6.53

\* \* \* \* \* 各 筆 面 積 計 算 書 \* \* \* \* \*

3-1 BLOCK

点 名	X	Y	(X-X0)*(YN-1-Y0)	(XN-1-X0)*(Y-Y0)
X0·Y0	- 150500.000	- 38500.000		
3-1-5	- 150557.840	- 38609.105		
3-1-6	- 150556.249	- 38607.808	+ 6137.047145	+ 6235.614720
3-1-7	- 150550.361	- 38560.558	+ 5429.318688	+ 3406.326942
3-1-8	- 150552.373	- 38558.350	+ 3171.604134	+ 2938.564350
3-1-9	- 150605.520	- 38559.988	+ 6157.092000	+ 3141.751524
3-1-10	- 150607.764	- 38561.944	+ 6464.546832	+ 6536.330880
3-1-11	- 150613.673	- 38600.663	+ 7041.360312	+ 10847.847532
3-1-12	- 150612.477	- 38602.286	+ 11322.272251	+ 11627.156478
3-1-5	- 150557.840	- 38609.105	+ 5916.222240	+ 12271.803085
			+ 51639.463602	+ 57005.395511
		倍面積	= 5365.931909	
		面積	= 2682.965954	

1 LOT

点 名	X	Y	(X-X0)*(YN-1-Y0)	(XN-1-X0)*(Y-Y0)
X0·Y0	- 150500.000	- 38500.000		
3-1-15	- 150551.938	- 38573.214		
3-1-7	- 150550.361	- 38560.558	+ 3687.130254	+ 3145.261404
3-1-8	- 150552.373	- 38558.350	+ 3171.604134	+ 2938.564350
3-1-16	- 150565.630	- 38558.759	+ 3829.510500	+ 3077.385107
3-1-41	- 150567.197	- 38571.305	+ 3948.428523	+ 4679.747150
3-1-15	- 150551.938	- 38573.214	+ 3703.439090	+ 4919.761158
			+ 18340.112501	+ 18760.719169
		倍面積	= 420.606668	
		面積	= 210.303334	

2 LOT

点 名	X	Y	(X-X0)*(YN-1-Y0)	(XN-1-X0)*(Y-Y0)
X0·Y0	- 150500.000	- 38500.000		
3-1-16	- 150565.630	- 38558.759		
3-1-17	- 150581.977	- 38559.262	+ 4816.886543	+ 3889.365060
3-1-34	- 150585.944	- 38590.970	+ 5093.213328	+ 7457.447690
3-1-31	- 150569.903	- 38592.976	+ 6359.075910	+ 7990.729344
3-1-16	- 150565.630	- 38558.759	+ 6102.014880	+ 4107.430377
			+ 22371.190661	+ 23444.972471
		倍面積	= 1073.781810	
		面積	= 536.890905	

3 LOT

点 名	X	Y	(X-X0)*(YN-1-Y0)	(XN-1-X0)*(Y-Y0)
X0·Y0	- 150500.000	- 38500.000		
3-1-17	- 150581.977	- 38559.262		
3-1-18	- 150590.335	- 38559.520	+ 5353.432770	+ 4879.271040

\* \* \* \* \* 各 筆 面 積 計 算 書 \* \* \* \* \*

点 名	X	Y	(X-X0)*(YN-1-Y0)	(XN-1-X0)*(Y-Y0)
3-1-35	- 150594.148	- 38589.944	+ 5603.688960	+ 8125.091240
3-1-34	- 150585.944	- 38590.970	+ 7730.147136	+ 8564.643560
3-1-17	- 150581.977	- 38559.262	+ 7457.447690	+ 5093.213328
			+ 26144.716556	+ 26662.219168
		倍面積	= 517.502612	
		面積	= 258.751306	

4 LOT

点 名	X	Y	(X-X0)*(YN-1-Y0)	(XN-1-X0)*(Y-Y0)
X0·Y0	- 150500.000	- 38500.000		
3-1-18	- 150590.335	- 38559.520		
3-1-19	- 150597.706	- 38559.747	+ 5815.461120	+ 5397.245245
3-1-38	- 150601.381	- 38589.040	+ 6057.210607	+ 8699.742240
3-1-35	- 150594.148	- 38589.944	+ 8382.937920	+ 9118.612664
3-1-18	- 150590.335	- 38559.520	+ 8125.091240	+ 5603.688960
			+ 28380.700887	+ 28819.289109
		倍面積	= 438.588222	
		面積	= 219.294111	

5 LOT

点 名	X	Y	(X-X0)*(YN-1-Y0)	(XN-1-X0)*(Y-Y0)
X0·Y0	- 150500.000	- 38500.000		
3-1-19	- 150597.706	- 38559.747		
3-1-9	- 150605.520	- 38559.988	+ 6304.503440	+ 5861.187528
3-1-10	- 150607.764	- 38561.944	+ 6464.546832	+ 6536.330880
3-1-20	- 150611.702	- 38587.749	+ 6919.268688	+ 9456.183236
3-1-38	- 150601.381	- 38589.040	+ 8896.081369	+ 9945.946080
3-1-19	- 150597.706	- 38559.747	+ 8699.742240	+ 6057.210607
			+ 37284.142569	+ 37856.858331
		倍面積	= 572.715762	
		面積	= 286.357881	

6 LOT

点 名	X	Y	(X-X0)*(YN-1-Y0)	(XN-1-X0)*(Y-Y0)
X0·Y0	- 150600.000	- 38500.000		
3-1-20	- 150611.702	- 38587.749		
3-1-11	- 150613.673	- 38600.663	+ 1199.792077	+ 1177.958426
3-1-12	- 150612.477	- 38602.286	+ 1255.972251	+ 1398.556478
3-1-21	- 150604.118	- 38603.329	+ 421.213748	+ 1289.235933
3-1-39	- 150602.316	- 38588.923	+ 239.309964	+ 366.184914
3-1-20	- 150611.702	- 38587.749	+ 1040.576946	+ 203.226684
			+ 4156.864986	+ 4435.162435
		倍面積	= 278.297449	
		面積	= 139.148724	

\* \* \* \* \* 各 筆 面 積 計 算 書 \* \* \* \* \*

7 LOT

点 名	X	Y	(X-X0)*(YN-1-Y0)	(XN-1-X0)*(Y-Y0)
X0·Y0	- 150500.000	- 38500.000		
3-1-21	- 150604.118	- 38603.329		
3-1-22	- 150601.409	- 38603.667	+ 10478.490561	+ 10793.600706
3-1-37	- 150599.606	- 38589.261	+ 10325.855202	+ 9051.868749
3-1-39	- 150602.316	- 38588.923	+ 9132.828476	+ 8857.264338
3-1-21	- 150604.118	- 38603.329	+ 9258.484914	+ 10572.209964
			+ 39195.659153	+ 39274.943757
		倍面積	= 79.284604	
		面積	= 39.642302	

8 LOT

点 名	X	Y	(X-X0)*(YN-1-Y0)	(XN-1-X0)*(Y-Y0)
X0·Y0	- 150500.000	- 38500.000		
3-1-22	- 150601.409	- 38603.667		
3-1-23	- 150598.491	- 38604.031	+ 10210.266497	+ 10549.679679
3-1-36	- 150596.688	- 38589.626	+ 10058.549328	+ 8827.354366
3-1-37	- 150599.606	- 38589.261	+ 8927.287356	+ 8630.467568
3-1-22	- 150601.409	- 38603.667	+ 9051.868749	+ 10325.855202
			+ 38247.971930	+ 38333.356815
		倍面積	= 85.384885	
		面積	= 42.692442	

9 LOT

点 名	X	Y	(X-X0)*(YN-1-Y0)	(XN-1-X0)*(Y-Y0)
X0·Y0	- 150500.000	- 38500.000		
3-1-23	- 150598.491	- 38604.031		
3-1-24	- 150587.216	- 38605.438	+ 9073.167696	+ 10384.694058
3-1-33	- 150585.410	- 38591.037	+ 9005.459580	+ 7939.882992
3-1-36	- 150596.688	- 38589.626	+ 8802.185456	+ 7654.956660
3-1-23	- 150598.491	- 38604.031	+ 8827.354366	+ 10058.549328
			+ 35708.167098	+ 36038.083038
		倍面積	= 329.915940	
		面積	= 164.957970	

10 LOT

点 名	X	Y	(X-X0)*(YN-1-Y0)	(XN-1-X0)*(Y-Y0)
X0·Y0	- 150500.000	- 38500.000		
3-1-24	- 150587.216	- 38605.438		
3-1-25	- 150572.159	- 38607.318	+ 7608.300642	+ 9359.846688
3-1-32	- 150570.356	- 38592.919	+ 7550.465208	+ 6704.942121

\* \* \* \* \* 各 筆 面 積 計 算 書 \* \* \* \* \*

点 名	X	Y	(X-X0)*(YN-1-Y0)	(XN-1-X0)*(Y-Y0)
3-1-33	- 150585.410	- 38591.037	+ 7936.211790	+ 6404.999172
3-1-24	- 150587.216	- 38605.438	+ 7939.882992	+ 9005.459580
			+ 31034.860632	+ 31475.247561
		倍面積	= 440.386929	
		面積	= 220.193464	

11 LOT

点 名	X	Y	(X-X0)*(YN-1-Y0)	(XN-1-X0)*(Y-Y0)
X0·Y0	- 150500.000	- 38500.000		
3-1-25	- 150572.159	- 38607.318		
3-1-26	- 150570.095	- 38607.576	+ 7522.455210	+ 7762.576584
3-1-29	- 150568.292	- 38593.178	+ 7346.580192	+ 6531.311910
3-1-32	- 150570.356	- 38592.919	+ 6555.631368	+ 6345.624348
3-1-25	- 150572.159	- 38607.318	+ 6704.942121	+ 7550.465208
			+ 28129.608891	+ 28189.978050
		倍面積	= 60.369159	
		面積	= 30.184579	

12 LOT

点 名	X	Y	(X-X0)*(YN-1-Y0)	(XN-1-X0)*(Y-Y0)
X0·Y0	- 150500.000	- 38500.000		
3-1-26	- 150570.095	- 38607.576		
3-1-27	- 150566.432	- 38608.033	+ 7146.488832	+ 7572.573135
3-1-28	- 150564.626	- 38593.635	+ 6981.740658	+ 6220.360320
3-1-29	- 150568.292	- 38593.178	+ 6394.521420	+ 6021.721428
3-1-26	- 150570.095	- 38607.576	+ 6531.311910	+ 7346.580192
			+ 27054.062820	+ 27161.235075
		倍面積	= 107.172255	
		面積	= 53.586127	

13 LOT

点 名	X	Y	(X-X0)*(YN-1-Y0)	(XN-1-X0)*(Y-Y0)
X0·Y0	- 150500.000	- 38500.000		
3-1-27	- 150566.432	- 38608.033		
3-1-5	- 150557.840	- 38609.105	+ 6248.628720	+ 7248.063360
3-1-6	- 150556.249	- 38607.808	+ 6137.047145	+ 6235.614720
3-1-13	- 150554.638	- 38594.879	+ 5890.413504	+ 5336.848871
3-1-28	- 150564.626	- 38593.635	+ 6131.650254	+ 5116.029130
3-1-27	- 150566.432	- 38608.033	+ 6220.360320	+ 6981.740658
			+ 30628.099943	+ 30918.296739
		倍面積	= 290.196796	
		面積	= 145.098398	

\* \* \* \* \* 各 筆 面 積 計 算 書 \* \* \* \* \*

14 LOT

点 名	X	Y	(X-X0)*(YN-1-Y0)	(XN-1-X0)*(Y-Y0)
X0·Y0	- 150500.000	- 38500.000		
3-1-13	- 150554.638	- 38594.879		
3-1-14	- 150554.391	- 38592.897	+ 5160.563689	+ 5075.706286
3-1-40	- 150568.042	- 38591.189	+ 6320.897674	+ 4959.860899
3-1-29	- 150568.292	- 38593.178	+ 6227.479188	+ 6340.017476
3-1-13	- 150554.638	- 38594.879	+ 5091.059564	+ 6479.476668
			+ 22800.000115	+ 22855.061329
		倍面積	= 55.061214	
		面積	= 27.530607	

15 LOT

点 名	X	Y	(X-X0)*(YN-1-Y0)	(XN-1-X0)*(Y-Y0)
X0·Y0	- 150500.000	- 38500.000		
3-1-14	- 150554.391	- 38592.897		
3-1-15	- 150551.938	- 38573.214	+ 4824.884386	+ 3982.182674
3-1-41	- 150567.197	- 38571.305	+ 4919.761158	+ 3703.439090
3-1-31	- 150569.903	- 38592.976	+ 4984.433415	+ 6247.708272
3-1-29	- 150568.292	- 38593.178	+ 6349.516992	+ 6513.421734
3-1-40	- 150568.042	- 38591.189	+ 6340.017476	+ 6227.479188
3-1-14	- 150554.391	- 38592.897	+ 4959.860899	+ 6320.897674
			+ 32378.474326	+ 32995.128632
		倍面積	= 616.654306	
		面積	= 308.327153	

1 区切り

点 名	X	Y	(X-X0)*(YN-1-Y0)	(XN-1-X0)*(Y-Y0)
X0·Y0	- 150500.000	- 38600.000		
3-1-1	- 150556.433	- 38609.281		
3-1-5	- 150557.840	- 38609.105	+ 536.813040	+ 513.822465
3-1-6	- 150556.249	- 38607.808	+ 512.147145	+ 451.614720
3-1-1	- 150556.433	- 38609.281	+ 440.628864	+ 522.046969
			+ 1489.589049	+ 1487.484154
		倍面積	= 2.104895	
		面積	= 1.052447	

2 区切り

点 名	X	Y	(X-X0)*(YN-1-Y0)	(XN-1-X0)*(Y-Y0)
X0·Y0	- 150500.000	- 38500.000		
3-1-2	- 150550.077	- 38558.279		
3-1-7	- 150550.361	- 38560.558	+ 2934.988719	+ 3032.562966



\* \* \* \* \* 各 筆 面 積 計 算 書 \* \* \* \* \*

点 名	X	Y	(X-X0)*(YN-1-Y0)	(XN-1-X0)*(Y-Y0)
3-1-8	- 150552.373	- 38558.350	+ 3171.604134	+ 2938.564350
3-1-2	- 150550.077	- 38558.279	+ 2921.992950	+ 3052.246067
			+ 9028.585803	+ 9023.373383
		倍面積	= 5.212420	
		面積	= 2.606210	

3 区

点 名	X	Y	(X-X0)*(YN-1-Y0)	(XN-1-X0)*(Y-Y0)
X0-Y0	- 150600.000	- 38500.000		
3-1-3	- 150607.475	- 38560.048		
3-1-9	- 150605.520	- 38559.988	+ 331.464960	+ 448.410300
3-1-10	- 150607.764	- 38561.944	+ 465.746832	+ 341.930880
3-1-3	- 150607.475	- 38560.048	+ 463.031400	+ 466.212672
			+ 1260.243192	+ 1256.553852
		倍面積	= 3.689340	
		面積	= 1.844670	

4 区

点 名	X	Y	(X-X0)*(YN-1-Y0)	(XN-1-X0)*(Y-Y0)
X0-Y0	- 150600.000	- 38600.000		
3-1-4	- 150613.894	- 38602.109		
3-1-11	- 150613.673	- 38600.663	+ 28.836357	+ 9.211722
3-1-12	- 150612.477	- 38602.286	+ 8.272251	+ 31.256478
3-1-4	- 150613.894	- 38602.109	+ 31.761684	+ 26.313993
			+ 68.870292	+ 66.782193
		倍面積	= 2.088099	
		面積	= 1.044049	