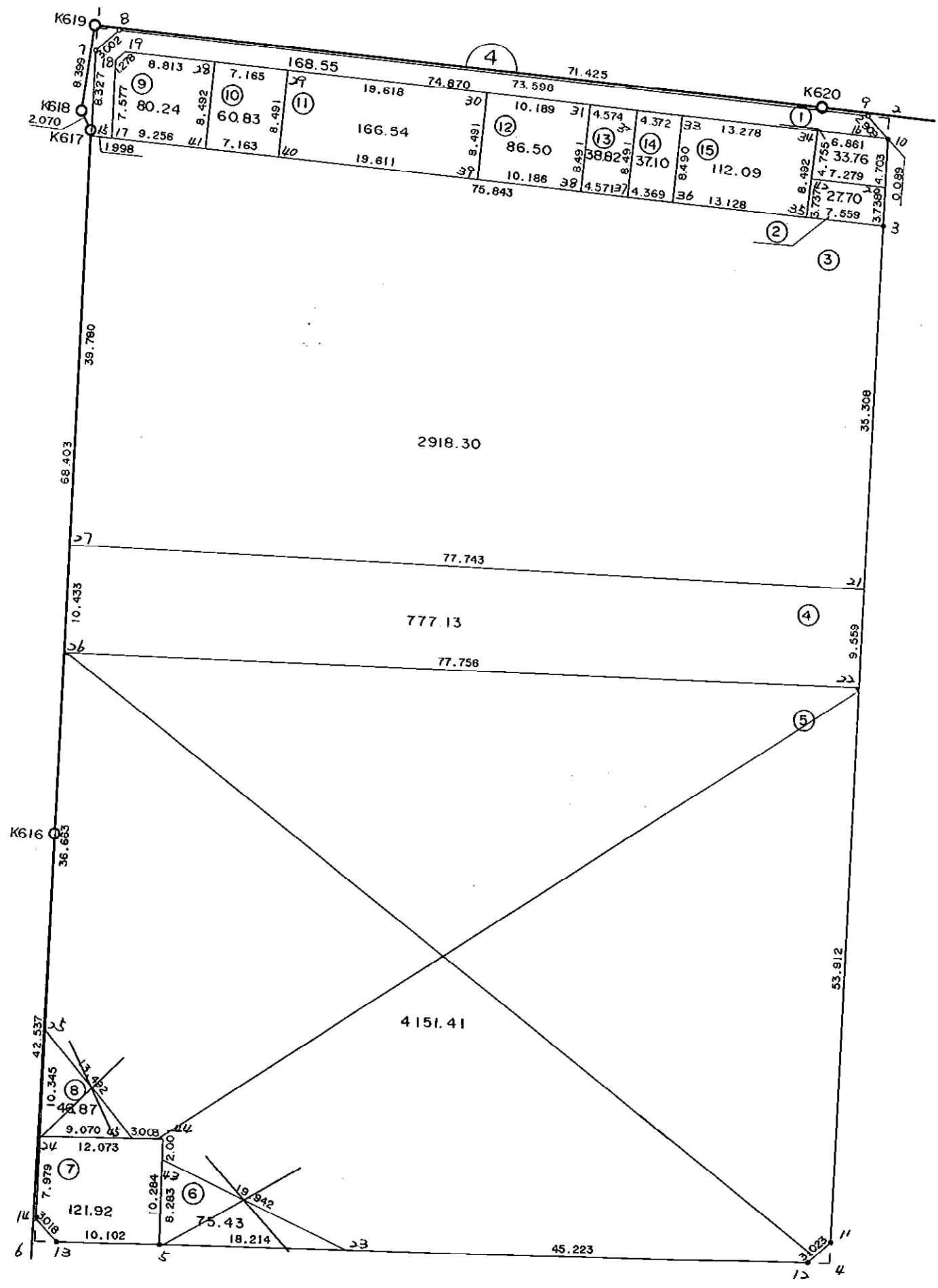


4 B L O C K



* * * 各筆面積 集計表 * * *

街区名・筆名	各筆面積	隔切面積
4 BLOCK	8903.25	
1 LOT	33.76	
2 LOT	27.70	
3 LOT	2918.30	
4 LOT	777.13	
5 LOT	4151.41	
6 LOT	75.43	
7 LOT	121.92	
8 LOT	46.87	
9 LOT	80.24	
10 LOT	60.83	
11 LOT	166.54	
12 LOT	86.50	
13 LOT	38.82	
14 LOT	37.10	
15 LOT	112.09	
スロ	168.55	
1 スミキリ		2.38
2 スミキリ		2.12
4 スミキリ		2.22
6 スミキリ		2.34
合計 =	8903.19	9.06

4134.88

88.04

50.68

* * * * * 各 筆 面 積 計 算 書 * * * * *

4 BLOCK

点 名	X	Y	(X-X0)*(Y1-Y0)	(XN-1-X0)*(Y-Y0)
X0·Y0	- 150500.000	- 38600.000		
4-7	- 150517.641	- 38738.764		
4-8	- 150515.327	- 38736.851	+ 2126.835828	+ 2414.188491
4-9	- 150510.419	- 38663.416	+ 1425.850569	+ 971.977032
4-10	- 150512.330	- 38661.106	+ 781.919280	+ 636.663414
4-3	- 150520.708	- 38660.070	+ 1265.383048	+ 740.663100
4-11	- 150618.724	- 38647.818	+ 7131.750680	+ 990.215144
4-12	- 150621.116	- 38649.667	+ 5791.524888	+ 5896.664908
4-5	- 150630.617	- 38712.388	+ 6487.354539	+ 13611.985008
4-13	- 150632.140	- 38722.375	+ 14850.950320	+ 15984.255375
4-14	- 150630.303	- 38724.769	+ 15945.829625	+ 16486.975660
4-7	- 150517.641	- 38738.764	+ 2201.049929	+ 18081.365492
			+ 58008.448706	+ 75814.953624
		倍面積	= 17806.504918	
		面積	= 8903.252459	

1 LOT

点 名	X	Y	(X-X0)*(Y1-Y0)	(XN-1-X0)*(Y-Y0)
X0·Y0	- 150500.000	- 38600.000		
4-16	- 150512.273	- 38661.175		
4-10	- 150512.330	- 38661.106	+ 754.287750	+ 749.953938
4-20	- 150516.998	- 38660.529	+ 1038.679788	+ 746.322570
4-42	- 150517.480	- 38667.792	+ 1058.046920	+ 1152.328416
4-34	- 150512.731	- 38668.021	+ 863.059952	+ 1189.007080
4-16	- 150512.273	- 38661.175	+ 834.821733	+ 778.818925
			+ 4548.896143	+ 4616.430929
		倍面積	= 67.534786	
		面積	= 33.767393	

2 LOT

点 名	X	Y	(X-X0)*(Y1-Y0)	(XN-1-X0)*(Y-Y0)
X0·Y0	- 150500.000	- 38600.000		
4-20	- 150516.998	- 38660.529		
4-3	- 150520.708	- 38660.070	+ 1253.434532	+ 1021.069860
4-35	- 150521.213	- 38667.612	+ 1274.264910	+ 1400.109296
4-42	- 150517.480	- 38667.792	+ 1181.857760	+ 1438.071696
4-20	- 150516.998	- 38660.529	+ 1152.328416	+ 1058.046920
			+ 4861.885618	+ 4917.297772
		倍面積	= 55.412154	
		面積	= 27.706077	

* * * * * 各 筆 面 積 計 算 書 * * * * *

3 LOT

点 名	X	Y	(X-X0)*(Yn-1-Y0)	(Xn-1-X0)*(Y-Y0)
X0·Y0	- 150500.000	- 38600.000		
4-3	- 150520.708	- 38660.070		
4-21	- 150555.743	- 38655.691	+ 3348.482010	+ 1153.249228
4-27	- 150565.382	- 38732.834	+ 3641.188962	+ 7404.565662
4-15	- 150525.904	- 38737.738	+ 3440.931936	+ 9005.585916
4-17	- 150525.770	- 38735.744	+ 3549.508260	+ 3516.312576
4-3	- 150520.708	- 38660.070	+ 2810.986752	+ 1548.003900
			+ 16791.097920	+ 22627.717282
		倍面積	= 5836.619362	
		面積	= 2918.309681	

4 LOT

点 名	X	Y	(X-X0)*(Yn-1-Y0)	(Xn-1-X0)*(Y-Y0)
X0·Y0	- 150500.000	- 38600.000		
4-21	- 150555.743	- 38655.691		
4-22	- 150565.228	- 38654.505	+ 3632.612548	+ 3038.272215
4-26	- 150575.735	- 38731.548	+ 4127.936175	+ 8580.612944
4-27	- 150565.382	- 38732.834	+ 8600.871336	+ 10060.182990
4-21	- 150555.743	- 38655.691	+ 7404.565662	+ 3641.188962
			+ 23765.985721	+ 25320.257111
		倍面積	= 1554.271390	
		面積	= 777.135695	

5 LOT

点 名	X	Y	(X-X0)*(Yn-1-Y0)	(Xn-1-X0)*(Y-Y0)
X0·Y0	- 150500.000	- 38600.000		
4-22	- 150565.228	- 38654.505		
4-11	- 150618.724	- 38647.818	+ 6471.051620	+ 3119.072504
4-12	- 150621.116	- 38649.667	+ 5791.524888	+ 5896.664908
4-23	- 150627.889	- 38691.379	+ 6351.862963	+ 11430.806964
4-43	- 150622.417	- 38713.556	+ 11553.594043	+ 14522.563284
4-44	- 150620.436	- 38713.838	+ 13676.230416	+ 13935.706446
4-45	- 150620.921	- 38716.802	+ 15765.404798	+ 14067.165672
4-25	- 150612.119	- 38727.028	+ 13095.723438	+ 15360.352788
4-26	- 150575.735	- 38731.548	+ 9620.465580	+ 14749.030212
4-22	- 150565.228	- 38654.505	+ 8580.612944	+ 4127.936175
			+ 88906.470690	+ 97209.298953
		倍面積	= 8302.828263	
		面積	= 4151.414131	

* * * * * 各 筆 面 積 計 算 書 * * * * *

6 LOT

点 名	X	Y	(X-X0)*(YN-1-Y0)	(XN-1-X0)*(Y-Y0)
X0·Y0	- 150600.000	- 38600.000		
4-23	- 150627.889	- 38694.379		
4-5	- 150630.617	- 38712.388	+ 2889.601843	+ 3134.388932
4-43	- 150622.417	- 38713.556	+ 2519.401796	+ 3476.744052
4-23	- 150627.889	- 38694.379	+ 3166.963284	+ 2115.694043
			+ 8575.966923	+ 8726.827027
		倍面積	= 150.860104	
		面積	= 75.430052	

7 LOT

点 名	X	Y	(X-X0)*(YN-1-Y0)	(XN-1-X0)*(Y-Y0)
X0·Y0	- 150600.000	- 38700.000		
4-5	- 150630.617	- 38712.388		
4-13	- 150632.140	- 38722.375	+ 398.150320	+ 685.055375
4-14	- 150630.303	- 38724.769	+ 678.029625	+ 796.075660
4-24	- 150622.385	- 38725.753	+ 554.454065	+ 780.393159
4-44	- 150620.436	- 38713.838	+ 526.288308	+ 309.763630
4-5	- 150630.617	- 38712.388	+ 423.678046	+ 253.161168
			+ 2580.600364	+ 2824.448992
		倍面積	= 243.848628	
		面積	= 121.924314	

8 LOT

点 名	X	Y	(X-X0)*(YN-1-Y0)	(XN-1-X0)*(Y-Y0)
X0·Y0	- 150600.000	- 38700.000		
4-24	- 150622.385	- 38725.753		
4-25	- 150612.119	- 38727.020	+ 312.100607	+ 605.021780
4-45	- 150620.921	- 38716.802	+ 565.452788	+ 203.623438
4-24	- 150622.385	- 38725.753	+ 376.112770	+ 538.778513
			+ 1253.666165	+ 1347.423731
		倍面積	= 93.757566	
		面積	= 46.878783	

9 LOT

点 名	X	Y	(X-X0)*(YN-1-Y0)	(XN-1-X0)*(Y-Y0)
X0·Y0	- 150500.000	- 38700.000		
4-17	- 150525.770	- 38735.744		
4-18	- 150518.253	- 38736.692	+ 652.435232	+ 945.552840
4-19	- 150517.268	- 38735.878	+ 633.597456	+ 654.881134
4-28	- 150516.680	- 38727.085	+ 598.445040	+ 467.703780

* * * * * 各 筆 面 積 計 算 書 * * * * *

点 名	X	Y	(X-X0)*(YN-1-Y0)	(XN-1-X0)*(Y-Y0)
4-41	- 150525.152	- 38726.509	+ 681.241920	+ 442.170120
4-17	- 150525.770	- 38735.744	+ 683.136930	+ 899.033088
			+ 3248.856578	+ 3409.340962
		倍面積	= 160.484384	
		面積	= 80.242192	

10 LOT

点 名	X	Y	(X-X0)*(YN-1-Y0)	(XN-1-X0)*(Y-Y0)
X0·Y0	- 150500.000	- 38700.000		
4-28	- 150516.680	- 38727.085		
4-29	- 150516.202	- 38719.936	+ 438.831170	+ 332.532480
4-40	- 150524.674	- 38719.362	+ 491.900864	+ 313.703124
4-41	- 150525.152	- 38726.509	+ 486.993024	+ 654.083066
4-28	- 150516.680	- 38727.085	+ 442.170120	+ 681.241920
			+ 1859.895178	+ 1981.560590
		倍面積	= 121.665412	
		面積	= 60.832706	

11 LOT

点 名	X	Y	(X-X0)*(YN-1-Y0)	(XN-1-X0)*(Y-Y0)
X0·Y0	- 150500.000	- 38600.000		
4-29	- 150516.202	- 38719.936		
4-30	- 150514.893	- 38700.362	+ 1786.206848	+ 1626.065124
4-39	- 150523.365	- 38699.795	+ 2344.958130	+ 1486.246935
4-40	- 150524.674	- 38719.362	+ 2462.341830	+ 2788.893130
4-29	- 150516.202	- 38719.936	+ 1933.903124	+ 2959.300864
			+ 8527.409932	+ 8860.506053
		倍面積	= 333.096121	
		面積	= 166.548060	

12 LOT

点 名	X	Y	(X-X0)*(YN-1-Y0)	(XN-1-X0)*(Y-Y0)
X0·Y0	- 150500.000	- 38600.000		
4-30	- 150514.893	- 38700.362		
4-31	- 150514.214	- 38690.195	+ 1426.545468	+ 1343.274135
4-38	- 150522.686	- 38689.631	+ 2046.163770	+ 1274.015034
4-39	- 150523.365	- 38699.795	+ 2094.228315	+ 2263.949370
4-30	- 150514.893	- 38700.362	+ 1486.246935	+ 2344.958130
			+ 7053.184488	+ 7226.196669
		倍面積	= 173.012181	
		面積	= 86.506090	

* * * * * 各 筆 面 積 計 算 書 * * * * *

13 LOT

点 名	X	Y	(X-X0)*(Yn-1-Y0)	(Xn-1-X0)*(Y-Y0)
X0·Y0	- 150500.000	- 38600.000		
4-31	- 150514.214	- 38690.195		
4-32	- 150513.909	- 38685.631	+ 1254.522255	+ 1217.159034
4-37	- 150522.381	- 38685.070	+ 1916.507411	+ 1183.238630
4-38	- 150522.686	- 38689.631	+ 1929.898020	+ 2006.031411
4-31	- 150514.214	- 38690.195	+ 1274.015034	+ 2046.163770
			+ 6374.942720	+ 6452.592845
		倍面積	= 77.650125	
		面積	= 38.825062	

14 LOT

点 名	X	Y	(X-X0)*(Yn-1-Y0)	(Xn-1-X0)*(Y-Y0)
X0·Y0	- 150500.000	- 38600.000		
4-32	- 150513.909	- 38685.631		
4-33	- 150513.617	- 38681.269	+ 1166.037327	+ 1130.370521
4-36	- 150522.089	- 38680.711	+ 1795.150941	+ 1099.041687
4-37	- 150522.381	- 38685.070	+ 1806.392891	+ 1879.111230
4-32	- 150513.909	- 38685.631	+ 1183.238630	+ 1916.507411
			+ 5950.819789	+ 6025.030849
		倍面積	= 74.211060	
		面積	= 37.105530	

15 LOT

点 名	X	Y	(X-X0)*(Yn-1-Y0)	(Xn-1-X0)*(Y-Y0)
X0·Y0	- 150500.000	- 38600.000		
4-33	- 150513.617	- 38681.269		
4-34	- 150512.731	- 38668.021	+ 1034.635639	+ 926.241957
4-35	- 150521.213	- 38667.612	+ 1442.929473	+ 860.768372
4-36	- 150522.089	- 38680.711	+ 1493.481468	+ 1712.122443
4-33	- 150513.617	- 38681.269	+ 1099.041687	+ 1795.150941
			+ 5070.088267	+ 5294.283713
		倍面積	= 224.195446	
		面積	= 112.097723	

16 LOT

点 名	X	Y	(X-X0)*(Yn-1-Y0)	(Xn-1-X0)*(Y-Y0)
X0·Y0	- 150500.000	- 38600.000		
4-15	- 150525.904	- 38737.738		
4-7	- 150517.641	- 38738.764	+ 2429.836058	+ 3594.542656
4-8	- 150515.327	- 38736.851	+ 2126.835828	+ 2414.188491

* * * * * 各 筆 面 積 計 算 書 * * * * *

点 名	X	Y	(X-X0)*(YN-1-Y0)	(XN-1-X0)*(Y-Y0)
4-9	- 150510.419	- 38663.416	+ 1425.850569	+ 971.977032
4-16	- 150512.273	- 38661.175	+ 778.304568	+ 637.382325
4-19	- 150517.268	- 38735.878	+ 1056.369900	+ 1667.630694
4-18	- 150518.253	- 38736.692	+ 2480.181134	+ 2360.397456
4-17	- 150525.770	- 38735.744	+ 3522.552840	+ 2477.735232
4-15	- 150525.904	- 38737.738	+ 3516.312576	+ 3549.508260
			+ 17336.243473	+ 17673.362146
		倍面積	= 337.118673	
		面積	= 168.559336	

1 区画

点 名	X	Y	(X-X0)*(YN-1-Y0)	(XN-1-X0)*(Y-Y0)
X0-Y0	- 150500.000	- 38700.000		
4-1	- 150515.473	- 38739.033		
4-7	- 150517.641	- 38738.764	+ 688.581153	+ 599.795372
4-8	- 150515.327	- 38736.851	+ 594.135828	+ 650.088491
4-1	- 150515.473	- 38739.033	+ 570.195523	+ 598.258791
			+ 1852.912504	+ 1848.142654
		倍面積	= 4.769850	
		面積	= 2.384925	

2 区画

点 名	X	Y	(X-X0)*(YN-1-Y0)	(XN-1-X0)*(Y-Y0)
X0-Y0	- 150500.000	- 38600.000		
4-2	- 150510.281	- 38661.359		
4-9	- 150510.419	- 38663.416	+ 639.299421	+ 651.979896
4-10	- 150512.330	- 38661.106	+ 781.919280	+ 636.663414
4-2	- 150510.281	- 38661.359	+ 628.230786	+ 756.556470
			+ 2049.449487	+ 2045.199780
		倍面積	= 4.249707	
		面積	= 2.124853	

4 区画

点 名	X	Y	(X-X0)*(YN-1-Y0)	(XN-1-X0)*(Y-Y0)
X0-Y0	- 150600.000	- 38600.000		
4-4	- 150620.797	- 38647.559		
4-11	- 150618.724	- 38647.818	+ 890.494716	+ 994.470946
4-12	- 150621.116	- 38649.667	+ 1009.724888	+ 929.964908
4-4	- 150620.797	- 38647.559	+ 1032.924599	+ 1004.255844
			+ 2933.144203	+ 2928.691698
		倍面積	= 4.452505	
		面積	= 2.226252	

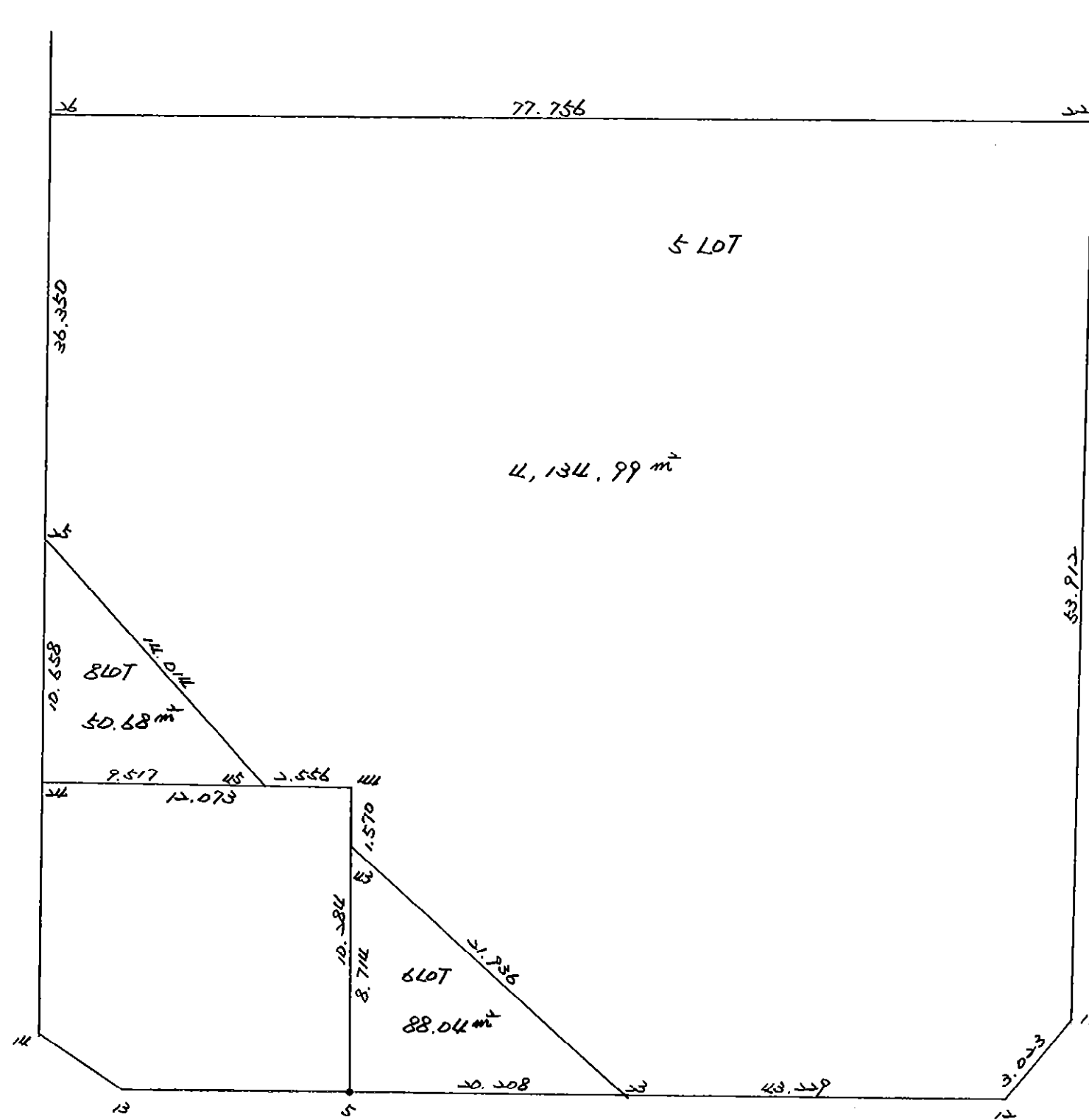
* * * * * 各 筆 面 積 計 算 書 * * * * *

6 区 別

点 名	X	Y	(X-X0)*(YN-1-Y0)	(XN-1-X0)*(Y-Y0)
X0·Y0	- 150600.000	- 38700.000		
4-6	- 150632.464	- 38724.501		
4-13	- 150632.140	- 38722.375	+ 787.462140	+ 726.382000
4-14	- 150630.303	- 38724.769	+ 678.029625	+ 796.075660
4-6	- 150632.464	- 38724.501	+ 804.100816	+ 742.453803
			+ 2269.592581	+ 2264.911463
		倍面積	= 4.681118	
		面積	= 2.340559	

H5, 1, 18 (西隣3)

U BL



* * * * 5 LOT

面積計算書

* * * * NO 1

点名	X	DY	DMD.1	Y	DY	DMD.2	DY * DMD.1	DY * DMD.1
4-22	- 150565.228		- 38654.505					
4-11	- 150618.724	+ 53.496	+ 53.496	- 38647.818	- 6.687	- 6.687	- 357.727752	- 357.727752
4-12	- 150621.116	+ 2.392	+ 109.384	- 38649.667	+ 1.849	- 11.525	+ 27.567800	+ 202.251016
4-23	- 150627.591	+ 6.475	+ 118.251	- 38692.408	+ 42.741	+ 33.065	+ 214.095875	+ 5054.165991
4-43	- 150621.990	- 5.601	+ 119.125	- 38713.617	+ 21.209	+ 97.015	- 543.381015	+ 2526.522125
4-44	- 150620.436	- 1.554	+ 111.970	- 38713.838	+ 0.221	+ 118.445	- 184.063530	+ 24.745370
4-45	- 150620.849	+ 0.413	+ 110.829	- 38716.360	+ 2.522	+ 121.188	+ 50.050644	+ 279.510738
4-25	- 150611.808	- 9.041	+ 102.201	- 38727.067	+ 10.707	+ 134.417	- 1215.264097	+ 1094.266107
4-26	- 150575.735	- 36.073	+ 57.087	- 38731.548	+ 4.481	+ 149.605	- 5396.701165	+ 255.806847
4-22	- 150565.228	- 10.507	+ 10.507	- 38654.505	- 77.043	+ 77.043	- 809.490801	- 809.490801
		+ 62.776			+ 83.730		+ 264.146519	+ 9437.268194
		- 62.776			- 83.730		- 8534.196160	- 1167.218553
							- 8270.049641	+ 8270.049641

面積 = ~~4135.024020~~
4134.99

* * * * 6 LOT

面積計算書

* * * * NO 1

点名	X	DX	DMD.1	Y	DY	DMD.2	DX * DMD.2	DY * DMD.1
4-23	- 150627.591			- 38692.408				
4-5	- 150630.617	+ 3.026	+ 3.026	- 38712.388	+ 19.980	+ 19.980	+ 60.459480	+ 60.459480
4-43	- 150621.990	- 8.627	- 2.575	- 38713.617	+ 1.229	+ 41.189	- 355.337503	- 3.164675
4-23	- 150627.591	+ 5.601	- 5.601	- 38692.408	- 21.209	+ 21.209	+ 118.791609	+ 118.791609
		+ 8.627			+ 21.209		+ 179.251089	+ 179.251089
		- 8.627			- 21.209		- 355.337503	- 3.164675
							- 176.086414	+ 176.086414
						面積 =	88.043207	

* * * * 8 LOT

面積計算書

* * * * NO 1

点名	X	DX	DMD.1	Y	DY	DMD.2	DX * DMD.2	DY * DMD.1
4-24	- 150622.385			- 38725.753				
4-25	- 150611.808	- 10.577	- 10.577	- 38727.067	+ 1.314	+ 1.314	- 13.898178	- 13.898178
4-45	- 150620.849	+ 9.041	- 12.113	- 38716.360	- 10.707	- 8.079	- 73.042239	+ 129.693891
4-24	- 150622.385	+ 1.536	- 1.536	- 38725.753	+ 9.393	- 9.393	- 14.427648	- 14.427648
		+ 10.577			+ 10.707		+ 0.000000	+ 129.693891
		- 10.577			- 10.707		- 101.368065	- 28.325826
							- 101.368065	+ 101.368065
						面積 =	50.684032	