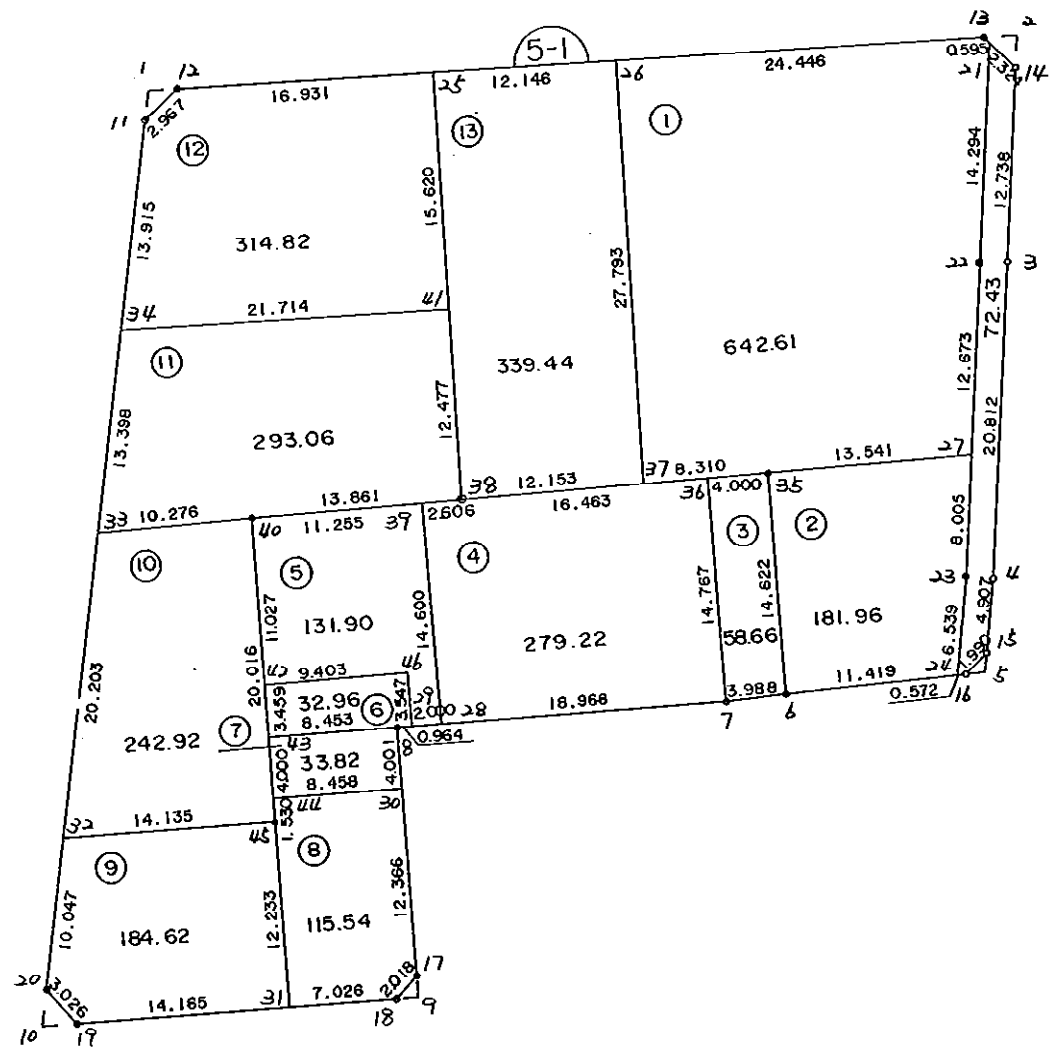


5 - 1 B L O C K



* * * 各筆面積 集計表 * * *

街区名・筆名	各筆面積	隔切面積
5-1 BLOCK	2924.03	
1 LOT	642.61	
2 LOT	181.96	
3 LOT	58.66	
4 LOT	279.22	
5 LOT	131.90	
6 LOT	32.96	
7 LOT	33.82	
8 LOT	115.54	
9 LOT	184.62	
10 LOT	242.92	
11 LOT	293.06	
12 LOT	314.82	
13 LOT	339.44	
スロ	72.43	
1 スミキリ		1.83
2 スミキリ		0.80
5 スミキリ		1.01
9 スミキリ		2.78
合計 =	2923.96	6.42

* * * * * 各 筆 面 積 計 算 書 * * * * *

5-1 BLOCK

点 名	X	Y	(X-X0)*(YN-1-Y0)	(XN-1-X0)*(Y-Y0)
X0·Y0	- 150600.000	- 38400.000		
5-1-11	- 150614.128	- 38544.242		
5-1-12	- 150611.900	- 38542.282	+ 1716.479800	+ 2010.160096
5-1-13	- 150603.917	- 38489.357	+ 557.318594	+ 1063.348300
5-1-21	- 150604.318	- 38488.918	+ 385.843526	+ 348.291806
5-1-14	- 150605.727	- 38487.070	+ 509.233386	+ 375.968260
5-1-3	- 150618.453	- 38486.523	+ 1606.702710	+ 495.517221
5-1-4	- 150639.249	- 38485.704	+ 3395.941227	+ 1581.495912
5-1-15	- 150644.156	- 38485.727	+ 3784.345824	+ 3364.699023
5-1-16	- 150645.690	- 38486.994	+ 3916.866630	+ 3841.307064
5-1-6	- 150648.018	- 38498.756	+ 4177.277892	+ 4512.161640
5-1-7	- 150648.853	- 38502.656	+ 4824.526868	+ 4929.335808
5-1-8	- 150652.475	- 38524.285	+ 5386.873600	+ 6071.695105
5-1-17	- 150668.624	- 38521.620	+ 8528.933840	+ 6382.009500
5-1-18	- 150670.243	- 38522.824	+ 8542.953660	+ 8428.674176
5-1-19	- 150673.691	- 38543.732	+ 9051.023384	+ 10096.166876
5-1-20	- 150671.665	- 38545.980	+ 10300.553780	+ 10757.412180
5-1-11	- 150614.128	- 38544.242	+ 2062.405440	+ 10337.102930
			+ 68747.280161	+ 74595.345897
		倍面積	= 5848.065736	
		面積	= 2924.032868	

1 LOT

点 名	X	Y	(X-X0)*(YN-1-Y0)	(XN-1-X0)*(Y-Y0)
X0·Y0	- 150600.000	- 38400.000		
5-1-26	- 150607.563	- 38513.530		
5-1-13	- 150603.917	- 38489.357	+ 444.697010	+ 675.806991
5-1-21	- 150604.318	- 38488.918	+ 385.843526	+ 348.291806
5-1-22	- 150618.600	- 38488.328	+ 1653.874800	+ 381.400304
5-1-27	- 150631.263	- 38487.822	+ 2761.398264	+ 1633.489200
5-1-35	- 150633.595	- 38501.161	+ 2950.380090	+ 3162.596343
5-1-37	- 150635.039	- 38509.344	+ 3544.580279	+ 3673.411680
5-1-26	- 150607.563	- 38513.530	+ 826.968672	+ 3977.977670
			+ 12567.742641	+ 13852.973994
		倍面積	= 1285.231353	
		面積	= 642.615676	

2 LOT

点 名	X	Y	(X-X0)*(YN-1-Y0)	(XN-1-X0)*(Y-Y0)
X0·Y0	- 150600.000	- 38400.000		
5-1-27	- 150631.263	- 38487.822		
5-1-23	- 150639.262	- 38487.503	+ 3448.067364	+ 2735.606289

* * * * * 各 筆 面 積 計 算 書 * * * * *

点 名	X	Y	(X-X0)*(YN-1-Y0)	(XN-1-X0)*(Y-Y0)
5-1-24	- 150645.801	- 38487.555	+ 4007.724903	+ 3437.584410
5-1-6	- 150648.018	- 38498.756	+ 4204.215990	+ 4523.123556
5-1-35	- 150633.595	- 38501.161	+ 3317.707820	+ 4857.548898
5-1-27	- 150631.263	- 38487.822	+ 3162.596343	+ 2950.380090
			+ 18140.312420	+ 18504.243243
		倍面積	= 363.930823	
		面積	= 181.965411	

3 LOT

点 名	X	Y	(X-X0)*(YN-1-Y0)	(XN-1-X0)*(Y-Y0)
X0-Y0	- 150600.000	- 38400.000		
5-1-6	- 150648.018	- 38498.756		
5-1-7	- 150648.853	- 38502.656	+ 4824.526868	+ 4929.335808
5-1-36	- 150634.290	- 38505.100	+ 3520.074240	+ 5134.450300
5-1-35	- 150633.595	- 38501.161	+ 3530.834500	+ 3468.810690
5-1-6	- 150648.018	- 38498.756	+ 4857.548898	+ 3317.707820
			+ 16732.984506	+ 16850.304618
		倍面積	= 117.320112	
		面積	= 58.660056	

4 LOT

点 名	X	Y	(X-X0)*(YN-1-Y0)	(XN-1-X0)*(Y-Y0)
X0-Y0	- 150600.000	- 38500.000		
5-1-7	- 150648.853	- 38502.656		
5-1-28	- 150651.986	- 38521.361	+ 138.074816	+ 1043.548933
5-1-39	- 150637.605	- 38523.878	+ 803.280405	+ 1241.321708
5-1-38	- 150637.152	- 38521.312	+ 887.115456	+ 801.437760
5-1-36	- 150634.290	- 38505.100	+ 730.788480	+ 189.475200
5-1-7	- 150648.853	- 38502.656	+ 249.150300	+ 91.074240
			+ 2808.409457	+ 3366.857841
		倍面積	= 558.448384	
		面積	= 279.224192	

5 LOT

点 名	X	Y	(X-X0)*(YN-1-Y0)	(XN-1-X0)*(Y-Y0)
X0-Y0	- 150600.000	- 38500.000		
5-1-28	- 150651.986	- 38521.361		
5-1-29	- 150652.316	- 38523.334	+ 1117.522076	+ 1213.041324
5-1-46	- 150648.818	- 38523.920	+ 1139.119212	+ 1251.398720
5-1-42	- 150650.442	- 38533.182	+ 1206.572640	+ 1619.878876
5-1-40	- 150639.560	- 38534.962	+ 1312.679920	+ 1763.553204
5-1-39	- 150637.605	- 38523.878	+ 1314.746010	+ 944.613680

* * * * * 各 筆 面 積 計 算 書 * * * * *

点 名	X	Y	(X-X0)*(YN-1-Y0)	(XN-1-X0)*(Y-Y0)
5-1-28	- 150651.986	- 38521.361	+ 1241.321708	+ 803.280405
			+ 7331.961566	+ 7595.766209
		倍面積	= 263.804643	
		面積	= 131.902321	

6 LOT

点 名	X	Y	(X-X0)*(YN-1-Y0)	(XN-1-X0)*(Y-Y0)
X0·Y0	- 150600.000	- 38500.000		
5-1-29	- 150652.316	- 38523.334		
5-1-8	- 150652.475	- 38524.285	+ 1224.451650	+ 1270.494060
5-1-43	- 150653.856	- 38532.624	+ 1307.892960	+ 1711.944400
5-1-42	- 150650.442	- 38533.182	+ 1645.619808	+ 1787.049792
5-1-46	- 150648.818	- 38523.920	+ 1619.878876	+ 1206.572640
5-1-29	- 150652.316	- 38523.334	+ 1251.398720	+ 1139.119212
			+ 7049.242014	+ 7115.180104
		倍面積	= 65.938090	
		面積	= 32.969045	

7 LOT

点 名	X	Y	(X-X0)*(YN-1-Y0)	(XN-1-X0)*(Y-Y0)
X0·Y0	- 150600.000	- 38500.000		
5-1-8	- 150652.475	- 38524.285		
5-1-30	- 150656.423	- 38523.634	+ 1370.232555	+ 1240.194150
5-1-44	- 150657.804	- 38531.979	+ 1366.139736	+ 1804.351117
5-1-43	- 150653.856	- 38532.624	+ 1722.261024	+ 1885.797696
5-1-8	- 150652.475	- 38524.285	+ 1711.944400	+ 1307.892960
			+ 6170.577715	+ 6238.235923
		倍面積	= 67.658208	
		面積	= 33.829104	

8 LOT

点 名	X	Y	(X-X0)*(YN-1-Y0)	(XN-1-X0)*(Y-Y0)
X0·Y0	- 150600.000	- 38500.000		
5-1-30	- 150656.423	- 38523.634		
5-1-17	- 150668.624	- 38521.620	+ 1621.859616	+ 1219.865260
5-1-18	- 150670.243	- 38522.824	+ 1518.653660	+ 1566.274176
5-1-31	- 150671.386	- 38529.756	+ 1629.314064	+ 2090.150708
5-1-45	- 150659.314	- 38531.732	+ 1764.947384	+ 2265.220552
5-1-44	- 150657.804	- 38531.979	+ 1834.236528	+ 1896.802406
5-1-30	- 150656.423	- 38523.634	+ 1804.351117	+ 1366.139736
			+ 10173.362369	+ 10404.452838
		倍面積	= 231.090469	
		面積	= 115.545234	

* * * * * 各 筆 面 積 計 算 書 * * * * *

9 LOT

点 名	X	Y	(X-X0)*(YN-1-Y0)	(XN-1-X0)*(Y-Y0)
X0·Y0	- 150600.000	- 38500.000		
5-1-31	- 150671.386	- 38529.756		
5-1-19	- 150673.691	- 38543.732	+ 2192.749396	+ 3121.852552
5-1-20	- 150671.665	- 38545.980	+ 3134.053780	+ 3388.312180
5-1-32	- 150661.623	- 38545.677	+ 2833.425540	+ 3273.442205
5-1-45	- 150659.314	- 38531.732	+ 2709.285578	+ 1955.421036
5-1-31	- 150671.386	- 38529.756	+ 2265.220552	+ 1764.947384
			+ 13134.734846	+ 13503.975357
		倍面積	= 369.240511	
		面積	= 184.620255	

10 LOT

点 名	X	Y	(X-X0)*(YN-1-Y0)	(XN-1-X0)*(Y-Y0)
X0·Y0	- 150600.000	- 38500.000		
5-1-32	- 150661.623	- 38545.677		
5-1-33	- 150641.429	- 38545.067	+ 1892.352433	+ 2777.163741
5-1-40	- 150639.560	- 38534.962	+ 1782.850520	+ 1448.440698
5-1-45	- 150659.314	- 38531.732	+ 2073.736068	+ 1255.317920
5-1-32	- 150661.623	- 38545.677	+ 1955.421036	+ 2709.285578
			+ 7704.360057	+ 8190.207937
		倍面積	= 485.847880	
		面積	= 242.923940	

11 LOT

点 名	X	Y	(X-X0)*(YN-1-Y0)	(XN-1-X0)*(Y-Y0)
X0·Y0	- 150600.000	- 38500.000		
5-1-33	- 150641.429	- 38545.067		
5-1-34	- 150628.037	- 38544.662	+ 1263.543479	+ 1850.301998
5-1-41	- 150624.817	- 38523.188	+ 1108.376854	+ 650.121956
5-1-38	- 150637.152	- 38521.312	+ 861.480576	+ 528.899904
5-1-40	- 150639.560	- 38534.962	+ 843.102720	+ 1298.908224
5-1-33	- 150641.429	- 38545.067	+ 1448.440698	+ 1782.850520
			+ 5524.944327	+ 6111.082602
		倍面積	= 586.138275	
		面積	= 293.069137	

12 LOT

点 名	X	Y	(X-X0)*(YN-1-Y0)	(XN-1-X0)*(Y-Y0)
X0·Y0	- 150600.000	- 38500.000		
5-1-34	- 150628.037	- 38544.662		
5-1-11	- 150614.128	- 38544.242	+ 630.984736	+ 1240.412954

* * * * * 各 筆 面 積 計 算 書 * * * * *

点 名	X	Y	(X-X0)*(YN-1-Y0)	(XN-1-X0)*(Y-Y0)
5-1-12	- 150611.900	- 38542.282	+ 526.479800	+ 597.360096
5-1-25	- 150609.375	- 38525.540	+ 396.393750	+ 303.926000
5-1-41	- 150624.817	- 38523.188	+ 633.826180	+ 217.387500
5-1-34	- 150628.037	- 38544.662	+ 650.121956	+ 1108.376854
			+ 2837.806422	+ 3467.463404
		倍面積	= 629.656982	
		面積	= 314.828491	

13 LOT

点 名	X	Y	(X-X0)*(YN-1-Y0)	(XN-1-X0)*(Y-Y0)
X0·Y0	- 150600.000	- 38500.000		
5-1-25	- 150609.375	- 38525.540		
5-1-26	- 150607.563	- 38513.530	+ 193.159020	+ 126.843750
5-1-37	- 150635.039	- 38509.344	+ 474.077670	+ 70.668672
5-1-38	- 150637.152	- 38521.312	+ 347.148288	+ 746.751168
5-1-41	- 150624.817	- 38523.188	+ 528.899904	+ 861.480576
5-1-25	- 150609.375	- 38525.540	+ 217.387500	+ 633.826180
			+ 1760.672382	+ 2439.570346
		倍面積	= 678.897964	
		面積	= 339.448982	

210

点 名	X	Y	(X-X0)*(YN-1-Y0)	(XN-1-X0)*(Y-Y0)
X0·Y0	- 150600.000	- 38400.000		
5-1-21	- 150604.318	- 38488.918		
5-1-14	- 150605.727	- 38487.070	+ 509.233386	+ 375.968260
5-1-3	- 150618.453	- 38486.523	+ 1606.702710	+ 495.517221
5-1-4	- 150639.249	- 38485.704	+ 3395.941227	+ 1581.495912
5-1-15	- 150644.156	- 38485.727	+ 3784.345824	+ 3364.699023
5-1-16	- 150645.690	- 38486.994	+ 3916.866630	+ 3841.307064
5-1-24	- 150645.801	- 38487.555	+ 3984.412194	+ 4000.387950
5-1-23	- 150639.262	- 38487.503	+ 3437.584410	+ 4007.724903
5-1-22	- 150618.600	- 38488.328	+ 1627.555800	+ 3467.933936
5-1-21	- 150604.318	- 38488.918	+ 381.400304	+ 1653.874800
			+ 22644.042485	+ 22788.909069
		倍面積	= 144.866584	
		面積	= 72.433292	

1 234

点 名	X	Y	(X-X0)*(YN-1-Y0)	(XN-1-X0)*(Y-Y0)
X0·Y0	- 150600.000	- 38500.000		
5-1-1	- 150612.187	- 38544.183		
5-1-11	- 150614.128	- 38544.242	+ 624.217424	+ 539.177254

* * * * * 各 筆 面 積 計 算 書 * * * * *

点 名	X	Y	(X-X0)*(YN-1-Y0)	(XN-1-X0)*(Y-Y0)
5-1-12	- 150611.900	- 38542.282	+ 526.479800	+ 597.360096
5-1-1	- 150612.187	- 38544.183	+ 515.290734	+ 525.777700
			+ 1665.987958	+ 1662.315050
		倍面積	= 3.672908	
		面積	= 1.836454	

2 筆目

点 名	X	Y	(X-X0)*(YN-1-Y0)	(XN-1-X0)*(Y-Y0)
X0-Y0	- 150600.000	- 38400.000		
5-1-5	- 150645.441	- 38485.733		
5-1-15	- 150644.156	- 38485.727	+ 3785.626348	+ 3895.520607
5-1-16	- 150645.690	- 38486.994	+ 3916.866630	+ 3841.307064
5-1-5	- 150645.441	- 38485.733	+ 3953.094354	+ 3917.140770
			+ 11655.587332	+ 11653.968441
		倍面積	= 1.618891	
		面積	= 0.809445	

5 筆目

点 名	X	Y	(X-X0)*(YN-1-Y0)	(XN-1-X0)*(Y-Y0)
X0-Y0	- 150600.000	- 38500.000		
5-1-9	- 150670.007	- 38521.392		
5-1-17	- 150668.624	- 38521.620	+ 1468.004608	+ 1513.551340
5-1-18	- 150670.243	- 38522.824	+ 1518.653660	+ 1566.274176
5-1-9	- 150670.007	- 38521.392	+ 1597.839768	+ 1502.638256
			+ 4584.498036	+ 4582.463772
		倍面積	= 2.034264	
		面積	= 1.017132	

9 筆目

点 名	X	Y	(X-X0)*(YN-1-Y0)	(XN-1-X0)*(Y-Y0)
X0-Y0	- 150600.000	- 38500.000		
5-1-10	- 150674.074	- 38546.053		
5-1-19	- 150673.691	- 38543.732	+ 3393.691623	+ 3239.404168
5-1-20	- 150671.665	- 38545.980	+ 3134.053780	+ 3388.312180
5-1-10	- 150674.074	- 38546.053	+ 3405.922520	+ 3300.388245
			+ 9933.667923	+ 9928.104593
		倍面積	= 5.563330	
		面積	= 2.781665	