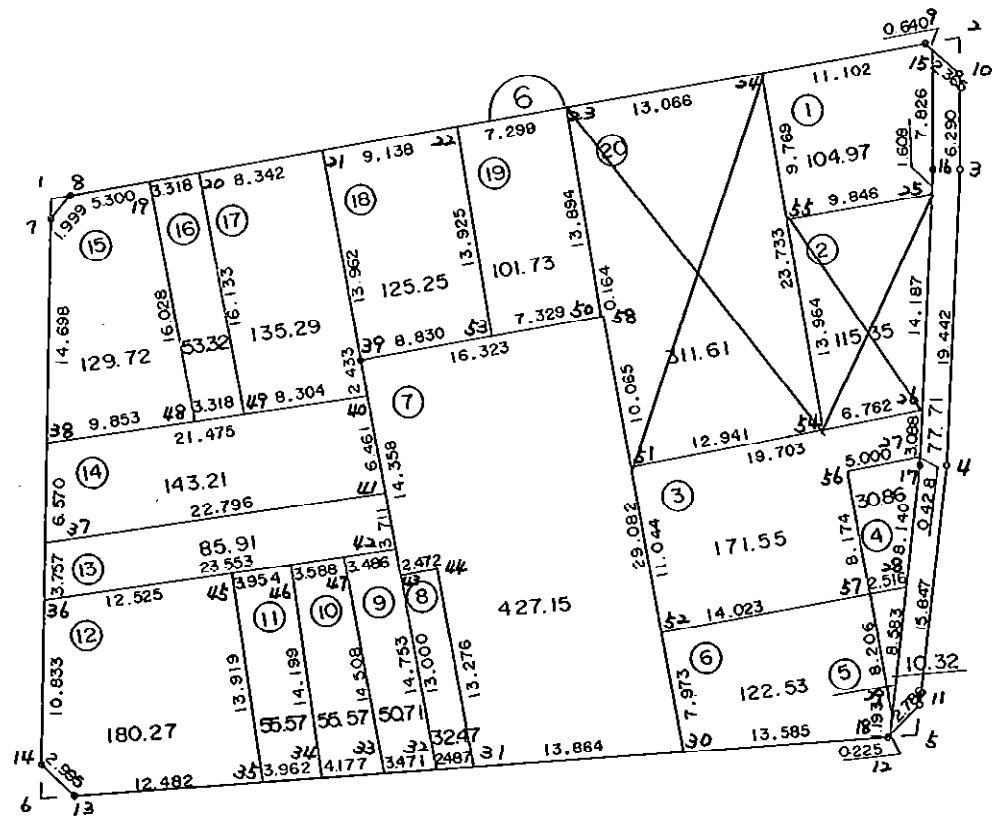


6 B L O C K

[



7.525

* * * 各筆面積 集計表 * * *

街区名・筆名	各筆面積	隅切面積
6 BLOCK	2521.17	
1 LOT	104.97	
2 LOT	115.35 ^{110.40}	
3 LOT	171.55	
4 LOT	30.86	
5 LOT	10.32	
6 LOT	122.53	
7 LOT	427.15	
8 LOT	32.47	
9 LOT	50.71	
10 LOT	55.57	
11 LOT	55.57	
12 LOT	180.27	
13 LOT	85.91	
14 LOT	143.21	
15 LOT	129.72	
16 LOT	53.32	
17 LOT	135.29	
18 LOT	125.25	
19 LOT	101.73	
20 LOT	311.61 ^{306.26}	
スロ	77.71	
1 スミキリ		0.82
2 スミキリ		2.67
5 スミキリ		1.87
6 スミキリ		2.45
合計 =	2521.07	7.81

* * * * * 各 筆 面 積 計 算 書 * * * * *

6 BLOCK

点 名	X	Y	(X-X0)*(Yn-1-Y0)	(Xn-1-X0)*(Y-Y0)
X0·Y0	- 150600.000	- 38400.000		
6-7	- 150680.454	- 38546.254		
6-8	- 150678.935	- 38544.954	+ 11544.559490	+ 11662.129116
6-9	- 150669.630	- 38488.146	+ 10093.147020	+ 6957.804510
6-10	- 150671.605	- 38485.881	+ 6311.694330	+ 5979.894030
6-3	- 150677.895	- 38485.927	+ 6689.700495	+ 6152.802835
6-4	- 150697.304	- 38487.066	+ 8361.040808	+ 6782.006070
6-11	- 150713.022	- 38489.082	+ 9840.373452	+ 8668.034928
6-12	- 150715.083	- 38491.277	+ 10251.823806	+ 10316.309094
6-13	- 150718.373	- 38545.205	+ 10804.732321	+ 16710.627015
6-14	- 150716.295	- 38547.362	+ 16886.615475	+ 17443.682026
6-7	- 150680.454	- 38546.254	+ 11855.862348	+ 17008.608930

+102639.549545
 = 5042.349009
 = 2521.174504
 倍面積
 面積

1 LOT

点 名	X	Y	(X-X0)*(Yn-1-Y0)	(Xn-1-X0)*(Y-Y0)
X0·Y0	- 150600.000	- 38400.000		
6-24	- 150671.425	- 38499.102		
6-9	- 150669.630	- 38488.146	+ 6900.472260	+ 6295.828050
6-15	- 150670.051	- 38487.664	+ 6174.715446	+ 6104.044320
6-16	- 150677.877	- 38487.729	+ 6827.009328	+ 6145.504179
6-25	- 150679.482	- 38487.823	+ 6972.876378	+ 6839.391771
6-55	- 150681.068	- 38497.540	+ 7119.634964	+ 7752.674280
6-24	- 150671.425	- 38499.102	+ 6966.794500	+ 8034.000936

+ 40961.502876
 = 209.940660
 = 104.970330
 倍面積
 面積

~~2 LOT~~

点 名	X	Y	(X-X0)*(Yn-1-Y0)	(Xn-1-X0)*(Y-Y0)
X0·Y0	- 150600.000	- 38400.000		
6-25	- 150679.482	- 38487.823		
6-26	- 150693.645	- 38488.654	+ 8224.184835	+ 7046.397228
6-54	- 150694.853	- 38495.307	+ 8409.097862	+ 8925.024015
6-55	- 150681.068	- 38497.540	+ 7726.347876	+ 9251.961620
6-25	- 150679.482	- 38487.823	+ 7752.674280	+ 7119.634964

~~+ 32112.304853
 = 230.712974
 = 115.356487
 倍面積
 面積~~

* * * * * 各 筆 面 積 計 算 書 * * * * *

3 LOT

点 名	X	Y	(X-X0)*(YN-1-Y0)	(XN-1-X0)*(Y-Y0)
X0·Y0	- 150600.000	- 38400.000		
6-26	- 150693.645	- 38488.654		
6-27	- 150696.728	- 38488.835	+ 8575.324112	+ 8318.953575
6-56	- 150697.605	- 38493.757	+ 8670.740175	+ 9068.927096
6-57	- 150705.659	- 38492.363	+ 9906.270863	+ 9015.090615
6-52	- 150708.052	- 38506.180	+ 9980.006876	+ 11218.872620
6-51	- 150697.166	- 38508.040	+ 10317.085880	+ 11673.938080
6-26	- 150693.645	- 38488.654	+ 10117.405800	+ 8614.154564
			+ 57566.833706	+ 57909.936550
		倍面積	= 343.102844	
		面積	= 171.551422	

4 LOT

点 名	X	Y	(X-X0)*(YN-1-Y0)	(XN-1-X0)*(Y-Y0)
X0·Y0	- 150600.000	- 38400.000		
6-27	- 150696.728	- 38488.835		
6-17	- 150697.155	- 38488.860	+ 8630.764425	+ 8595.250080
6-28	- 150705.230	- 38489.884	+ 9350.737800	+ 8732.680020
6-57	- 150705.659	- 38492.363	+ 9497.053556	+ 9719.358490
6-56	- 150697.605	- 38493.757	+ 9015.090615	+ 9906.270863
6-27	- 150696.728	- 38488.835	+ 9068.927096	+ 8670.740175
			+ 45562.573492	+ 45624.299628
		倍面積	= 61.726136	
		面積	= 30.863068	

5 LOT

点 名	X	Y	(X-X0)*(YN-1-Y0)	(XN-1-X0)*(Y-Y0)
X0·Y0	- 150700.000	- 38400.000		
6-28	- 150705.230	- 38489.884		
6-29	- 150713.745	- 38490.963	+ 1235.455580	+ 475.736490
6-57	- 150705.659	- 38492.363	+ 514.759617	+ 1269.529435
6-28	- 150705.230	- 38489.884	+ 483.058490	+ 508.653556
			+ 2233.273687	+ 2253.919481
		倍面積	= 20.645794	
		面積	= 10.322897	

6 LOT

点 名	X	Y	(X-X0)*(YN-1-Y0)	(XN-1-X0)*(Y-Y0)
X0·Y0	- 150700.000	- 38400.000		
6-29	- 150713.745	- 38490.963		
6-18	- 150714.929	- 38491.113	+ 1357.986627	+ 1252.348185

* * * * * 各 筆 面 積 計 算 書 * * * * *

点 名	X	Y	(X-X0)*(YN-1-Y0)	(XN-1-X0)*(Y-Y0)
6-12	- 150715.083	- 38491.277	+ 1374.257379	+ 1362.674333
6-30	- 150715.911	- 38504.837	+ 1452.308347	+ 1581.256471
6-52	- 150708.052	- 38506.180	+ 844.147524	+ 1689.429980
6-57	- 150705.659	- 38492.363	+ 600.872620	+ 743.706876
6-29	- 150713.745	- 38490.963	+ 1269.529435	+ 514.759617
			+ 6899.101932	+ 7144.175462
		倍面積	= 245.073530	
		面積	= 122.536765	

7 LOT

点 名	X	Y	(X-X0)*(YN-1-Y0)	(XN-1-X0)*(Y-Y0)
X0·Y0	- 150600.000	- 38500.000		
6-30	- 150715.911	- 38504.837		
6-31	- 150716.755	- 38518.675	+ 564.743935	+ 2164.637925
6-44	- 150703.674	- 38520.943	+ 1936.111950	+ 2445.199965
6-43	- 150704.097	- 38523.379	+ 2180.103471	+ 2423.794446
6-39	- 150689.951	- 38525.833	+ 2102.964429	+ 2689.137801
6-58	- 150687.245	- 38509.736	+ 2253.800085	+ 875.762936
6-30	- 150715.911	- 38504.837	+ 1128.509496	+ 422.004065
			+ 10166.233366	+ 11020.537138
		倍面積	= 854.303772	
		面積	= 427.151886	

8 LOT

点 名	X	Y	(X-X0)*(YN-1-Y0)	(XN-1-X0)*(Y-Y0)
X0·Y0	- 150700.000	- 38500.000		
6-31	- 150716.755	- 38518.675		
6-32	- 150716.906	- 38521.157	+ 315.719550	+ 354.485535
6-43	- 150704.097	- 38523.379	+ 86.680229	+ 395.245374
6-44	- 150703.674	- 38520.943	+ 85.894446	+ 85.803471
6-31	- 150716.755	- 38518.675	+ 350.899965	+ 68.611950
			+ 839.194190	+ 904.146330
		倍面積	= 64.952140	
		面積	= 32.476070	

9 LOT

点 名	X	Y	(X-X0)*(YN-1-Y0)	(XN-1-X0)*(Y-Y0)
X0·Y0	- 150700.000	- 38500.000		
6-32	- 150716.906	- 38521.157		
6-33	- 150717.117	- 38524.622	+ 362.144369	+ 416.259532
6-47	- 150702.828	- 38527.135	+ 69.631016	+ 464.469795
6-42	- 150702.370	- 38523.679	+ 64.309950	+ 66.964212

* * * * * 各 筆 面 積 計 算 書 * * * * *

点 名	X	Y	(X-X0)*(YN-1-Y0)	(XN-1-X0)*(Y-Y0)
6-32	- 150716.906	- 38521.157	+ 400.317174	+ 50.142090
			+ 896.402509	+ 997.835629
		倍面積	= 101.433120	
		面積	= 50.716560	

10 LOT

点 名	X	Y	(X-X0)*(YN-1-Y0)	(XN-1-X0)*(Y-Y0)
X0·Y0	- 150700.000	- 38500.000		
6-33	- 150717.117	- 38524.622		
6-34	- 150717.371	- 38528.791	+ 427.708762	+ 492.815547
6-46	- 150703.300	- 38530.692	+ 95.010300	+ 533.150732
6-47	- 150702.828	- 38527.135	+ 86.796976	+ 89.545500
6-33	- 150717.117	- 38524.622	+ 464.469795	+ 69.631016
			+ 1073.985833	+ 1185.142795
		倍面積	= 111.156962	
		面積	= 55.578481	

11 LOT

点 名	X	Y	(X-X0)*(YN-1-Y0)	(XN-1-X0)*(Y-Y0)
X0·Y0	- 150700.000	- 38500.000		
6-34	- 150717.371	- 38528.791		
6-35	- 150717.613	- 38532.746	+ 507.095883	+ 568.830766
6-45	- 150703.820	- 38534.612	+ 125.089720	+ 609.621156
6-46	- 150703.300	- 38530.692	+ 114.219600	+ 117.243440
6-34	- 150717.371	- 38528.791	+ 533.150732	+ 95.010300
			+ 1279.555935	+ 1390.705662
		倍面積	= 111.149727	
		面積	= 55.574863	

12 LOT

点 名	X	Y	(X-X0)*(YN-1-Y0)	(XN-1-X0)*(Y-Y0)
X0·Y0	- 150700.000	- 38500.000		
6-35	- 150717.613	- 38532.746		
6-13	- 150718.373	- 38545.205	+ 601.642258	+ 796.195665
6-14	- 150716.295	- 38547.362	+ 736.615475	+ 870.182026
6-36	- 150705.467	- 38547.027	+ 258.928054	+ 766.304965
6-45	- 150703.820	- 38534.612	+ 179.643140	+ 189.223804
6-35	- 150717.613	- 38532.746	+ 609.621156	+ 125.089720
			+ 2386.450083	+ 2746.996180
		倍面積	= 360.546097	
		面積	= 180.273048	

* * * * * 各 筆 面 積 計 算 書 * * * * *

13 LOT

点 名	X	Y	(X-X0)*(YN-1-Y0)	(XN-1-X0)*(Y-Y0)
X0·Y0	- 150600.000	- 38500.000		
6-36	- 150705.467	- 38547.027		
6-37	- 150701.712	- 38546.911	+ 4783.210224	+ 4947.562437
6-41	- 150698.714	- 38524.313	+ 4630.772454	+ 2472.923856
6-42	- 150702.370	- 38523.679	+ 2488.921810	+ 2337.448806
6-36	- 150705.467	- 38547.027	+ 2497.353093	+ 4814.153990
			+ 14400.257581	+ 14572.089089
		倍面積	= 171.831508	
		面積	= 85.915754	

14 LOT

点 名	X	Y	(X-X0)*(YN-1-Y0)	(XN-1-X0)*(Y-Y0)
X0·Y0	- 150600.000	- 38500.000		
6-37	- 150701.712	- 38546.911		
6-38	- 150695.145	- 38546.709	+ 4463.347095	+ 4750.865808
6-40	- 150692.348	- 38525.417	+ 4313.482732	+ 2418.300465
6-41	- 150698.714	- 38524.313	+ 2509.013738	+ 2245.256924
6-37	- 150701.712	- 38546.911	+ 2472.923856	+ 4630.772454
			+ 13758.767421	+ 14045.195651
		倍面積	= 286.428230	
		面積	= 143.214115	

15 LOT

点 名	X	Y	(X-X0)*(YN-1-Y0)	(XN-1-X0)*(Y-Y0)
X0·Y0	- 150600.000	- 38500.000		
6-38	- 150695.145	- 38546.709		
6-7	- 150680.454	- 38546.254	+ 3757.925886	+ 4400.836830
6-8	- 150678.935	- 38544.954	+ 3651.059490	+ 3616.729116
6-19	- 150678.078	- 38539.724	+ 3509.918412	+ 3135.613940
6-48	- 150693.862	- 38536.940	+ 3728.574088	+ 2884.201320
6-38	- 150695.145	- 38546.709	+ 3514.656300	+ 4384.200158
			+ 18162.134176	+ 18421.581364
		倍面積	= 259.447188	
		面積	= 129.723594	

16 LOT

点 名	X	Y	(X-X0)*(YN-1-Y0)	(XN-1-X0)*(Y-Y0)
X0·Y0	- 150600.000	- 38500.000		
6-19	- 150678.078	- 38539.724		
6-20	- 150677.542	- 38536.450	+ 3080.278408	+ 2845.943100

* * * * * 各 筆 面 積 計 算 書 * * * * *

点 名	X	Y	(X-X0)*(YN-1-Y0)	(XN-1-X0)*(Y-Y0)
6-49	- 150693.430	- 38533.650	+ 3405.523500	+ 2609.288300
6-48	- 150693.862	- 38536.940	+ 3158.456300	+ 3451.304200
6-19	- 150678.078	- 38539.724	+ 2884.201320	+ 3728.574088
			+ 12528.459528	+ 12635.109688
		倍面積	= 106.650160	
		面積	= 53.325080	

17 LOT

点 名	X	Y	(X-X0)*(YN-1-Y0)	(XN-1-X0)*(Y-Y0)
X0·Y0	- 150600.000	- 38500.000		
6-20	- 150677.542	- 38536.450		
6-21	- 150676.194	- 38528.218	+ 2777.271300	+ 2188.080156
6-39	- 150689.951	- 38525.833	+ 2538.237318	+ 1968.319602
6-40	- 150692.348	- 38525.417	+ 2385.625884	+ 2286.284567
6-49	- 150693.430	- 38533.650	+ 2374.710310	+ 3107.510200
6-20	- 150677.542	- 38536.450	+ 2609.288300	+ 3405.523500
			+ 12685.133112	+ 12955.718025
		倍面積	= 270.584913	
		面積	= 135.292456	

18 LOT

点 名	X	Y	(X-X0)*(YN-1-Y0)	(XN-1-X0)*(Y-Y0)
X0·Y0	- 150600.000	- 38500.000		
6-21	- 150676.194	- 38528.218		
6-22	- 150674.717	- 38519.200	+ 2108.364306	+ 1462.924800
6-53	- 150688.487	- 38517.126	+ 1698.950400	+ 1279.603342
6-39	- 150689.951	- 38525.833	+ 1540.500826	+ 2285.884671
6-21	- 150676.194	- 38528.218	+ 1968.319602	+ 2538.237318
			+ 7316.135134	+ 7566.650131
		倍面積	= 250.514997	
		面積	= 125.257498	

19 LOT

点 名	X	Y	(X-X0)*(YN-1-Y0)	(XN-1-X0)*(Y-Y0)
X0·Y0	- 150600.000	- 38500.000		
6-22	- 150674.717	- 38519.200		
6-23	- 150673.537	- 38511.996	+ 1411.910400	+ 896.305132
6-50	- 150687.272	- 38509.898	+ 1046.914912	+ 727.869226
6-53	- 150688.487	- 38517.126	+ 875.844326	+ 1494.620272
6-22	- 150674.717	- 38519.200	+ 1279.603342	+ 1698.950400
			+ 4614.272980	+ 4817.745030
		倍面積	= 203.472050	
		面積	= 101.736025	

* * * * * 各 筆 面 積 計 算 書 * * * * *

20 LOT

点 名	X	Y	(X-X0)*(YN-1-Y0)	(XN-1-X0)*(Y-Y0)
X0·Y0	- 150600.000	- 38400.000		
6-23	- 150673.537	- 38511.996		
6-24	- 150671.425	- 38499.102	+ 7999.314300	+ 7287.663774
6-54	- 150694.853	- 38495.307	+ 9400.122006	+ 6807.302475
6-51	- 150697.166	- 38508.040	+ 9260.599962	+ 10247.918120
6-58	- 150687.245	- 38509.736	+ 9425.949800	+ 10662.608176
6-50	- 150687.272	- 38509.898	+ 9576.880192	+ 9588.051010
6-23	- 150673.537	- 38511.996	+ 8081.569226	+ 9774.114912
			+ 53744.435486	+ 54367.658467
		倍面積	= 623.222981	
		面積	= 311.611490	

210

点 名	X	Y	(X-X0)*(YN-1-Y0)	(XN-1-X0)*(Y-Y0)
X0·Y0	- 150600.000	- 38400.000		
6-15	- 150670.051	- 38487.664		
6-10	- 150671.605	- 38485.881	+ 6277.180720	+ 6016.049931
6-3	- 150677.895	- 38485.927	+ 6689.700495	+ 6152.802835
6-4	- 150697.304	- 38487.066	+ 8361.040808	+ 6782.006070
6-11	- 150713.022	- 38489.082	+ 9840.373452	+ 8668.034928
6-18	- 150714.929	- 38491.113	+ 10238.105178	+ 10297.773486
6-17	- 150697.155	- 38488.860	+ 8852.083515	+ 10212.590940
6-16	- 150677.877	- 38487.729	+ 6920.150220	+ 8523.310995
6-15	- 150670.051	- 38487.664	+ 6145.504179	+ 6827.009328
			+ 63324.138567	+ 63479.578513
		倍面積	= 155.439946	
		面積	= 77.719973	

1 23キリ

点 名	X	Y	(X-X0)*(YN-1-Y0)	(XN-1-X0)*(Y-Y0)
X0·Y0	- 150600.000	- 38500.000		
6-1	- 150679.141	- 38546.213		
6-7	- 150680.454	- 38546.254	+ 3718.020702	+ 3660.587814
6-8	- 150678.935	- 38544.954	+ 3651.059490	+ 3616.729116
6-1	- 150679.141	- 38546.213	+ 3557.704514	+ 3647.823155
			+ 10926.784706	+ 10925.140085
		倍面積	= 1.644621	
		面積	= 0.822310	

2 23キリ

点 名	X	Y	(X-X0)*(YN-1-Y0)	(XN-1-X0)*(Y-Y0)
X0·Y0	- 150600.000	- 38400.000		
6-2	- 150669.256	- 38485.864		
6-9	- 150669.630	- 38488.146	+ 5978.710320	+ 6104.639376

* * * * * 各 筆 面 積 計 算 書 * * * * *

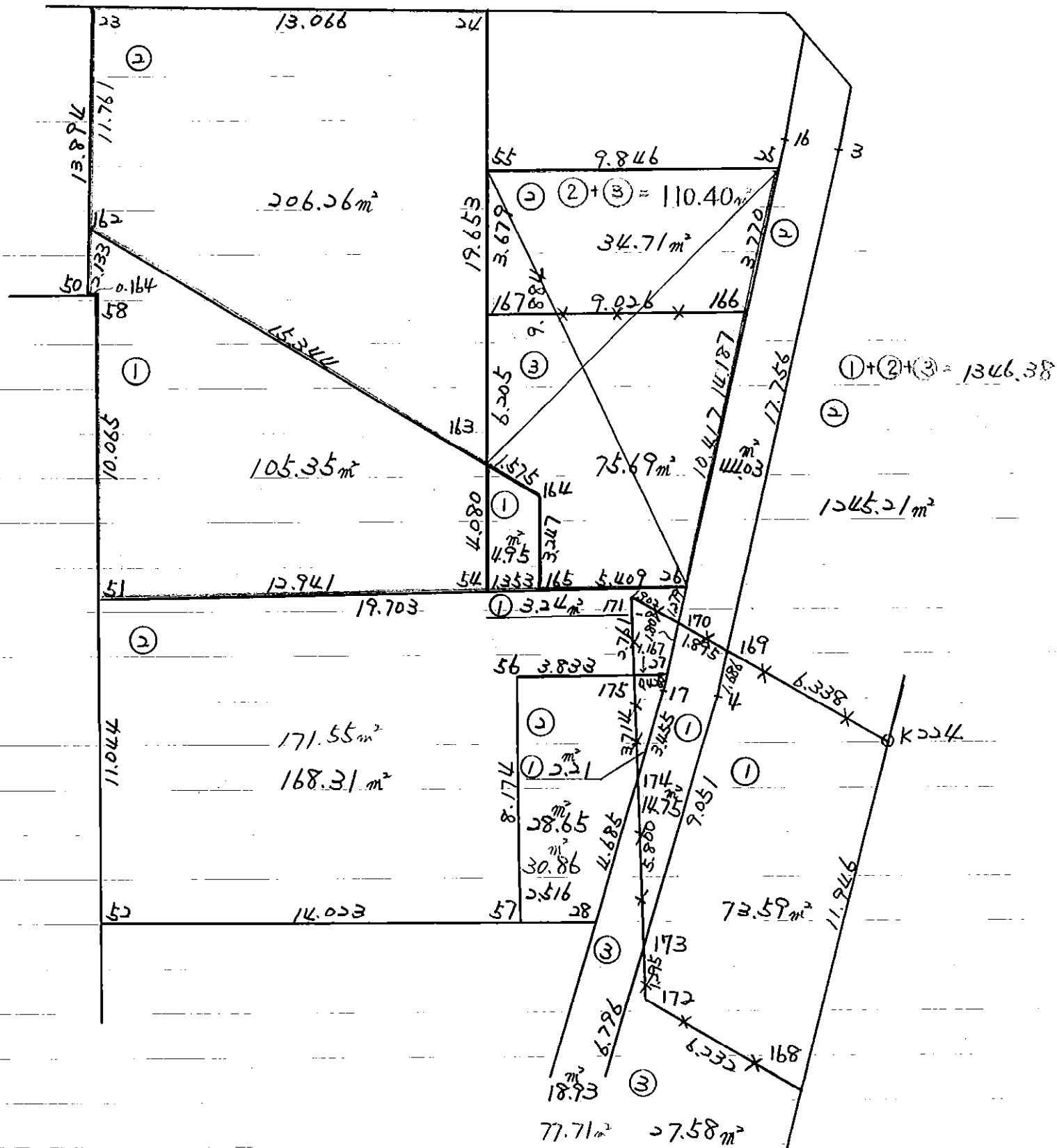
点 名	X	Y	(X-X0)*(YN-1-Y0)	(XN-1-X0)*(Y-Y0)
6-10	- 150671.605	- 38485.881	+ 6311.694330	+ 5979.894030
6-2	- 150669.256	- 38485.864	+ 5947.774536	+ 6148.291720
			+ 18238.179186	+ 18232.825126
		倍面積	= 5.354060	
		面積	= 2.677030	

5 区

点 名	X	Y	(X-X0)*(YN-1-Y0)	(XN-1-X0)*(Y-Y0)
X0-Y0	- 150700.000	- 38400.000		
6-5	- 150714.964	- 38489.331		
6-11	- 150713.022	- 38489.082	+ 1163.268282	+ 1333.023048
6-12	- 150715.083	- 38491.277	+ 1343.623806	+ 1188.609094
6-5	- 150714.964	- 38489.331	+ 1365.869028	+ 1347.379473
			+ 3872.761116	+ 3869.011615
		倍面積	= 3.749501	
		面積	= 1.874750	

6 区

点 名	X	Y	(X-X0)*(YN-1-Y0)	(XN-1-X0)*(Y-Y0)
X0-Y0	- 150700.000	- 38500.000		
6-6	- 150718.509	- 38547.431		
6-13	- 150718.373	- 38545.205	+ 871.449763	+ 836.699345
6-14	- 150716.295	- 38547.362	+ 736.615475	+ 870.182026
6-6	- 150718.509	- 38547.431	+ 876.623258	+ 772.888145
			+ 2484.688496	+ 2479.769516
		倍面積	= 4.918980	
		面積	= 2.459490	



* * * * 232-120-1

面積計算書

* * * * NO 1

点名	X	DX	DMD.1	Y	DY	DMD.2	DX * DMD.2	DY * DMD.1
6-162	- 150685.163		- 38510.220					
6-163	- 150690.825	+ 5.662	- 38495.959	- 14.261	- 14.261	-	80.745782	- 80.745782
6-54	- 150694.853	+ 4.028	- 38495.307	- 0.652	- 29.174	-	117.512872	- 10.009504
6-51	- 150697.166	+ 2.313	- 38508.040	+ 12.733	- 17.093	-	39.536109	+ 276.216969
6-58	- 150687.245	- 9.921	- 38509.736	+ 1.696	- 2.664	+	26.429544	+ 23.888160
6-50	- 150687.272	+ 0.027	- 38509.898	+ 0.162	- 0.806	-	0.021762	+ 0.678942
6-162	- 150685.163	- 2.109	- 38510.220	+ 0.322	- 0.322	+	0.679098	+ 0.679098
		+ 12.030		+ 14.913		+	27.108642	+ 301.463169
		- 12.030		- 14.913		-	237.816525	- 90.755286
						-	210.707883	+ 210.707883
							面積 = 105.353941	

* * * * 232-120-2

面積計算書

* * * * NO 1

点名	X	DX	DMD.1	Y	DY	DMD.2	DX * DMD.2	DY * DMD.1
6-162	- 150685.163		- 38510.220					
6-23	- 150673.537	- 11.626	- 11.626	- 38511.996	+ 1.776	+ 1.776	- 20.647776	- 20.647776
6-24	- 150671.425	- 2.112	- 25.364	- 38499.102	- 12.894	- 9.342	+ 19.730304	+ 327.043416
6-163	- 150690.825	+ 19.400	- 8.076	- 38495.959	- 3.143	- 25.379	- 492.352600	+ 25.382868
6-162	- 150685.163	- 5.662	+ 5.662	- 38510.220	+ 14.261	- 14.261	+ 80.745782	+ 80.745782
		+ 19.400			+ 16.037		+ 100.476086	+ 433.172066
		- 19.400			- 16.037		- 513.000376	- 20.647776
							- 412.524290	+ 412.524290
						面積 =	206.262145	

* * * * 232-102-1

面 積 計 算 書

* * * * NO 1

点 名	X	DX	DMD.1	Y	DY	DMD.2	DX * DMD.2	DY * DMD.1
6-54	- 150694.853			- 38495.307				
6-163	- 150690.825	- 4.028	- 4.028	- 38495.959	+ 0.652	+ 0.652	- 2.626256	- 2.626256
6-164	- 150691.406	+ 0.581	- 7.475	- 38494.495	- 1.464	- 0.160	- 0.092960	+ 10.943400
6-165	- 150694.611	+ 3.205	- 3.689	- 38493.976	- 0.519	- 2.143	- 6.868315	+ 1.914591
6-54	- 150694.853	+ 0.242	- 0.242	- 38495.307	+ 1.331	- 1.331	- 0.322102	- 0.322102
		+ 4.028			+ 1.983		+ 0.000000	+ 12.857991
		- 4.028			- 1.983		- 9.909633	- 2.948358
							- 9.909633	+ 9.909633
						面 積 =	4.954816	

* * * * 232-102-2

面積計算書

* * * * NO 1

点名	X	DX	DMD.1	Y	DY	DMD.2	DX * DMD.2	DY * DMD.1
6-25	- 150679.482			- 38487.823				
6-166	- 150683.246	+ 3.764	+ 3.764	- 38488.044	+ 0.221	+ 0.221	+ 0.831844	+ 0.831844
6-167	- 150684.700	+ 1.454	+ 8.982	- 38496.952	+ 8.908	+ 9.350	+ 13.594900	+ 80.011656
6-55	- 150681.068	- 3.632	+ 6.804	- 38497.540	+ 0.588	+ 18.846	+ 68.448672	+ 4.000752
6-25	- 150679.482	- 1.586	+ 1.586	- 38487.823	- 9.717	+ 9.717	- 15.411162	- 15.411162
		+ 5.218			+ 9.717		+ 14.426744	+ 84.844252
		- 5.218			- 9.717		- 83.859834	- 15.411162
							+ 69.433090	+ 69.433090

面積 = 84.716545

* * * * 232-102-3

面積計算書

* * * * NO 1

点名	X	DX	DMD.1	Y	DY	DMD.2	DX * DMD.2	DY * DMD.1
6-166	- 150683.246		- 38488.044					
6-26	- 150693.645	+ 10.399	+ 10.399	- 38488.654	+ 0.610	+ 0.610	+ 6.343390	+ 6.343390
6-165	- 150694.611	+ 0.966	+ 21.764	- 38493.976	+ 5.322	+ 6.542	+ 6.319572	+ 115.828008
6-164	- 150691.406	- 3.205	+ 19.525	- 38494.495	+ 0.519	+ 12.383	- 39.687515	+ 10.133475
6-163	- 150690.825	- 0.581	+ 15.739	- 38495.959	+ 1.464	+ 14.366	- 8.346646	+ 23.041896
6-167	- 150684.700	- 6.125	+ 9.033	- 38496.952	+ 0.993	+ 16.823	- 103.040875	+ 8.969769
6-166	- 150683.246	- 1.454	+ 1.454	- 38488.044	- 8.908	+ 8.908	- 12.952232	- 12.952232
		+ 11.365			+ 8.908		+ 12.662962	+ 164.316538
		- 11.365			- 8.908		- 164.027268	- 12.952232
							- 151.364306	+ 151.364306

面積 = ~~75.682183~~ 端数調整
75.69 m²

* * * * 232-103-1

面 積 計 算 書

* * * * NO 1

点 名	X	DX	DMD.1	Y	DY	DMD.2	DX * DMD.2	DY * DMD.1
6-170	- 150694.922			- 38488.729				
6-27	- 150696.728	+ 1.806	+ 1.806	- 38488.835	+ 0.106	+ 0.106	+ 0.191436	+ 0.191436
6-175	- 150696.933	+ 0.205	+ 3.817	- 38489.984	+ 1.149	+ 1.361	+ 0.279005	+ 4.385733
6-171	- 150694.220	- 2.713	+ 1.309	- 38490.497	+ 0.513	+ 3.023	- 8.201399	+ 0.671517
6-170	- 150694.922	+ 0.702	- 0.702	- 38488.729	- 1.768	+ 1.768	+ 1.241136	+ 1.241136
		+ 2.713			+ 1.768		+ 1.711577	+ 6.489822
		- 2.713			- 1.768		- 8.201399	+ 0.000000
							- 6.489822	+ 6.489822
						面 積 =	3.244911	

* * * * 232-103-2

面積計算書

* * * * NO 1

点名	X	DX	DMD.1	Y	DY	DMD.2	DX * DMD.2	DY * DMD.1
6-26	- 150693.645		- 38488.654					
6-170	- 150694.922	+ 1.277	+ 1.277	- 38488.729	+ 0.075	+ 0.075	+ 0.095775	+ 0.095775
6-171	- 150694.220	- 0.702	+ 1.852	- 38490.497	+ 1.768	+ 1.918	+ 1.346436	+ 3.274336
6-175	- 150696.933	+ 2.713	+ 3.863	- 38489.984	- 0.513	+ 3.173	+ 8.608349	- 1.981719
6-56	- 150697.605	+ 0.672	+ 7.248	- 38493.757	+ 3.773	+ 6.433	+ 4.322976	+ 27.346704
6-57	- 150705.659	+ 8.054	+ 15.974	- 38492.363	- 1.394	+ 8.812	+ 70.971848	- 22.267756
6-52	- 150708.052	+ 2.393	+ 26.421	- 38506.180	+ 13.817	+ 21.235	+ 50.815355	+ 365.058957
6-51	- 150697.166	- 10.886	+ 17.928	- 38508.040	+ 1.860	+ 36.912	+ 401.824032	+ 33.346080
6-26	- 150693.645	- 3.521	+ 3.521	- 38488.654	- 19.386	+ 19.386	- 68.258106	- 68.258106
		+ 15.109			+ 21.293		+ 134.814303	+ 429.121852
		- 15.109			- 21.293		- 471.428574	- 92.507581
							- 336.614271	+ 336.614271

面積 = ~~168.307196~~ 端数調整

168.31 m²

* * * * 232-104-1

面 積 計 算 書

* * * * NO 1

点 名	X	DX	DMD.1	Y	DY	DMD.2	DX * DMD.2	DY * DMD.1
6-27	- 150696.728			- 38488.835				
6-17	- 150697.155	+ 0.427	+ 0.427	- 38488.860	+ 0.025	+ 0.025	+ 0.010675	+ 0.010675
6-174	- 150700.582	+ 3.427	+ 4.281	- 38489.295	+ 0.435	+ 0.485	+ 1.662095	+ 1.862235
6-175	- 150696.933	- 3.649	+ 4.059	- 38489.984	+ 0.689	+ 1.609	+ 5.871241	+ 2.796651
6-27	- 150696.728	- 0.205	+ 0.205	- 38488.835	- 1.149	+ 1.149	- 0.235545	- 0.235545
		+ 3.854			+ 1.149		+ 1.672770	+ 4.669561
		- 3.854			- 1.149		- 6.106786	- 0.235545
							- 4.434016	+ 4.434016
							面 積 = 2.217008	

* * * * 232-104-2

面積計算書

* * * * NO 1

点名	X	DX	DMD.1	Y	DY	DMD.2	DX * DMD.2	DY * DMD.1
6-174	- 150700.582		-	38489.295				
6-28	- 150705.230	+ 4.648	+ 4.648	- 38489.884	+ 0.589	+ 0.589	+ 2.737672	+ 2.737672
6-57	- 150705.659	+ 0.429	+ 9.725	- 38492.363	+ 2.479	+ 3.657	+ 1.568853	+ 24.108275
6-56	- 150697.605	- 8.054	+ 2.100	- 38493.757	+ 1.394	+ 7.530	+ 60.646620	+ 2.927400
6-175	- 150696.933	- 0.672	- 6.626	- 38489.984	- 3.773	+ 5.151	+ 3.461472	+ 24.999898
6-174	- 150700.582	+ 3.649	- 3.649	- 38489.295	- 0.689	+ 0.689	+ 2.514161	+ 2.514161
		+ 8.726			+ 4.462		+ 6.820686	+ 57.287406
		- 8.726			- 4.462		- 64.108092	+ 0.000000
							- 57.287406	+ 57.287406

面積 = ~~28.643703~~ 端数調整
28.65m²

* * * * 1109-1

面積計算書

* * * * NO 1

点名	X	DX	DMD.1	Y	DY	DMD.2	DX * DMD.2	DY * DMD.1
6-169	- 150695.621			- 38486.967				
6-4	- 150697.304	+ 1.683	+ 1.683	- 38487.066	+ 0.099	+ 0.099	+ 0.166617	+ 0.166617
6-173	- 150706.282	+ 8.978	+ 12.344	- 38488.217	+ 1.151	+ 1.349	+ 12.111322	+ 14.207944
6-174	- 150700.582	- 5.700	+ 15.622	- 38489.295	+ 1.078	+ 3.578	- 20.394600	+ 16.840516
6-17	- 150697.155	- 3.427	+ 6.495	- 38488.860	- 0.435	+ 4.221	- 14.465367	- 2.825325
6-170	- 150694.922	- 2.233	+ 0.835	- 38488.729	- 0.131	+ 3.655	- 8.161615	- 0.109385
6-169	- 150695.621	+ 0.699	- 0.699	- 38486.967	- 1.762	+ 1.762	+ 1.231638	+ 1.231638
		+ 11.360			+ 2.328		+ 13.509577	+ 32.446715
		- 11.360			- 2.328		- 43.021582	- 2.934710
							- 29.512005	+ 29.512005
						面積 =	14.756002	

* * * * 1109-2

面積計算書 * * * * NO 1

点名	X	DX	DMD.1	Y	DY	DMD.2	DX * DMD.2	DY * DMD.1
6-15	- 150670.051		- 38487.664					
6-10	- 150671.605	+ 1.554	+ 1.554	- 38485.881	- 1.783	- 1.783	- 2.770782	- 2.770782
6-3	- 150677.895	+ 6.290	+ 9.398	- 38485.927	+ 0.046	- 3.520	- 22.140800	+ 0.432308
6-169	- 150695.621	+ 17.726	+ 33.414	- 38486.967	+ 1.040	- 2.434	- 43.145084	+ 34.750560
6-170	- 150694.922	- 0.699	+ 50.441	- 38488.729	+ 1.762	+ 0.368	- 0.257232	+ 88.877042
6-16	- 150677.877	- 17.045	+ 32.697	- 38487.729	- 1.000	+ 1.130	- 19.260850	- 32.697000
6-15	- 150670.051	- 7.826	+ 7.826	- 38487.664	- 0.065	+ 0.065	- 0.508690	- 0.508690
		+ 25.570			+ 2.848		+ 0.000000	+ 124.059910
		- 25.570			- 2.848		- 88.083438	- 35.976472
							- 88.083438	+ 88.083438

面積 = ~~44.041719~~ 端数調整
44.03 ㎡

* * * * 1109-3

面積計算書

* * * * NO 1

点名	X	DX	DMD.1	Y	DY	DMD.2	DX * DMD.2	DY * DMD.1
6-173	- 150706.282		- 38488.217					
6-11	- 150713.022	+ 6.740	+ 6.740	- 38489.082	+ 0.865	+ 0.865	+ 5.830100	+ 5.830100
6-18	- 150714.929	+ 1.907	+ 15.387	- 38491.113	+ 2.031	+ 3.761	+ 7.172227	+ 31.250997
6-174	- 150700.582	- 14.347	+ 2.947	- 38489.295	- 1.818	+ 3.974	- 57.014978	- 5.357646
6-173	- 150706.282	+ 5.700	- 5.700	- 38488.217	- 1.078	+ 1.078	+ 6.144600	+ 6.144600

+ 14.347	+ 2.896	+ 19.146927	+ 43.225697
- 14.347	- 2.896	- 57.014978	- 5.357646
		- 37.868051	+ 37.868051

面積 = 18.934025

* * * * 1011-1

面 積 計 算 書 * * * * NO 1

点 名	X	DX	DMD.1	Y	DY	DMD.2	DX * DMD.2	DY * DMD.1
K224	- 150697.960			- 38481.077				
6-168	- 150709.855	+ 11.895	+ 11.895	- 38482.185	+ 1.108	+ 1.108	+ 13.179660	+ 13.179660
6-172	- 150707.554	- 2.301	+ 21.489	- 38487.977	+ 5.792	+ 8.008	- 18.426408	+ 124.464288
6-173	- 150706.282	- 1.272	+ 17.916	- 38488.217	+ 0.240	+ 14.040	- 17.858880	+ 4.299840
6-4	- 150697.304	- 8.978	+ 7.666	- 38487.066	- 1.151	+ 13.129	- 117.872162	- 8.823566
6-169	- 150695.621	- 1.683	- 2.995	- 38486.967	- 0.099	+ 11.879	- 19.992357	+ 0.296505
K224	- 150697.960	+ 2.339	- 2.339	- 38481.077	- 5.890	+ 5.890	+ 13.776710	+ 13.776710
		+ 14.234			+ 7.140		+ 26.956370	+ 156.017003
		- 14.234			- 7.140		- 174.149807	- 8.823566
							- 147.193437	+ 147.193437
						面 積 =	73.596718	

* * * * 1011-2

面積計算書 * * * * NO 1

点名	X	DX	DMD.1	Y	DY	DMD.2	DX * DMD.2	DY * DMD.1
KO1	- 150499.025		-	38493.019				
K623	- 150499.668	+ 0.643	+ 0.643	- 38493.173	+ 0.154	+ 0.154	+ 0.099022	+ 0.099022
K232-1	- 150505.892	+ 6.224	+ 7.510	- 38491.453	- 1.720	- 1.412	- 8.788288	- 12.917200
K232-2	- 150533.358	+ 27.466	+ 41.200	- 38486.949	- 4.504	- 7.636	- 209.730376	- 185.564800
K232	- 150557.983	+ 24.625	+ 93.291	- 38482.952	- 3.997	- 16.137	- 397.373625	- 372.884127
K231	- 150578.333	+ 20.350	+ 138.266	- 38482.125	- 0.827	- 20.961	- 426.556350	- 114.345982
K230	- 150598.178	+ 19.845	+ 178.461	- 38481.334	- 0.791	- 22.579	- 448.080255	- 141.162651
K229	- 150618.387	+ 20.209	+ 218.515	- 38480.522	- 0.812	- 24.182	- 488.694038	- 177.434180
K227	- 150639.492	+ 21.105	+ 259.829	- 38479.680	- 0.842	- 25.836	- 545.268780	- 218.776018
K226	- 150658.402	+ 18.910	+ 299.844	- 38479.785	+ 0.105	- 26.573	- 502.495430	+ 31.483620
K225	- 150677.968	+ 19.566	+ 338.320	- 38479.911	+ 0.126	- 26.342	- 515.407572	+ 42.628320
K224	- 150697.960	+ 19.992	+ 377.878	- 38481.077	+ 1.166	- 25.050	- 500.799600	+ 440.605748
6-169	- 150695.621	- 2.339	+ 395.531	- 38486.967	+ 5.890	- 17.994	+ 42.087966	+ 2329.677590
6-3	- 150677.895	- 17.726	+ 375.466	- 38485.927	- 1.040	- 13.144	+ 232.990544	- 390.484640
6-10	- 150671.605	- 6.290	+ 351.450	- 38485.881	- 0.046	- 14.230	+ 89.506700	- 16.166700
6-9	- 150669.630	- 1.975	+ 343.185	- 38488.146	+ 2.265	- 12.011	+ 23.721725	+ 777.314025
5-2-11	- 150664.467	- 5.163	+ 336.047	- 38487.788	- 0.358	- 10.104	+ 52.166952	- 120.304826
5-2-10	- 150662.168	- 2.299	+ 328.585	- 38485.820	- 1.968	- 12.430	+ 28.576570	- 646.655280
5-2-9	- 150651.160	- 11.008	+ 315.278	- 38485.797	- 0.023	- 14.421	+ 158.746368	- 7.251394
5-2-8	- 150649.847	- 1.313	+ 302.957	- 38487.307	+ 1.510	- 12.934	+ 16.982342	+ 457.465070
5-1-16	- 150645.690	- 4.157	+ 297.487	- 38486.994	- 0.313	- 11.737	+ 48.790709	- 93.113431
5-1-15	- 150644.156	- 1.534	+ 291.796	- 38485.727	- 1.267	- 13.317	+ 20.428278	- 369.705532
5-1-4	- 150639.249	- 4.907	+ 285.355	- 38485.704	- 0.023	- 14.607	+ 71.676549	- 6.563165
5-1-3	- 150618.453	- 20.796	+ 259.652	- 38486.523	+ 0.819	- 13.811	+ 287.213556	+ 212.654988
5-1-14	- 150605.727	- 12.726	+ 226.130	- 38487.070	+ 0.547	- 12.445	+ 158.375070	+ 123.693110
5-1-21	- 150604.318	- 1.409	+ 211.995	- 38488.918	+ 1.848	- 10.050	+ 14.160450	+ 391.766760
5-1-13	- 150603.917	- 0.401	+ 210.185	- 38489.357	+ 0.439	- 7.763	+ 3.112963	+ 92.271215
1-2-12	- 150597.790	- 6.127	+ 203.657	- 38489.366	+ 0.009	- 7.315	+ 44.819005	+ 1.832913
1-2-11	- 150595.462	- 2.328	+ 195.202	- 38487.481	- 1.885	- 9.191	+ 21.396648	- 367.955770
1-2-4	- 150558.575	- 36.887	+ 155.987	- 38488.954	+ 1.473	- 9.603	+ 354.225861	+ 229.768851
1-2-10	- 150536.156	- 22.419	+ 96.681	- 38492.587	+ 3.633	- 4.497	+ 100.818243	+ 351.242073
1-2-9	- 150535.064	- 1.092	+ 73.170	- 38494.225	+ 1.638	+ 0.774	- 0.845208	+ 119.852460
1-1-11	- 150531.091	- 3.973	+ 68.105	- 38494.880	+ 0.655	+ 3.067	- 12.185191	+ 44.608775
1-1-10	- 150529.450	- 1.641	+ 62.491	- 38493.680	- 1.200	+ 2.522	- 4.138602	- 74.989200
1-1-3	- 150507.177	- 22.273	+ 38.577	- 38497.315	+ 3.635	+ 4.957	- 110.407261	+ 140.227395
1-1-9	- 150501.298	- 5.879	+ 10.425	- 38498.960	+ 1.645	+ 10.237	- 60.183323	+ 17.149125
1-1-8	- 150499.592	- 1.706	+ 2.840	- 38501.470	+ 2.510	+ 14.392	- 24.552752	+ 7.128400
KO1	- 150499.025	- 0.567	+ 0.567	- 38493.019	- 8.451	+ 8.451	- 4.791717	- 4.791717
		+ 198.935			+ 30.067		+ 1769.895521	+ 5811.469460
		- 198.935			- 30.067		- 4260.298368	- 3321.066613
							- 2490.402847	+ 2490.402847

面積 = ~~1245.201423~~ 端数調整
1245.21m²

* * * * 1011-3

面積計算書

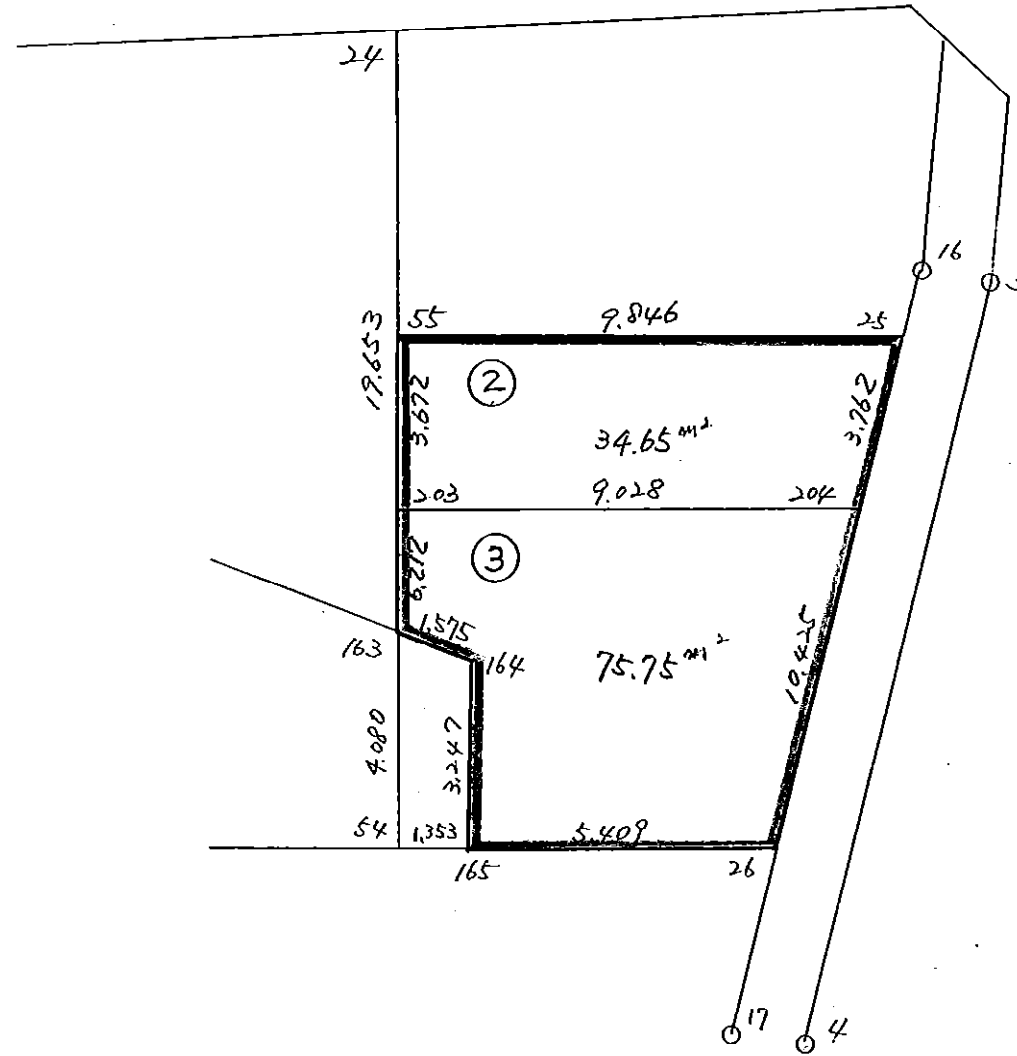
* * * * NO 1

点名	X	DX	DMD.1	Y	DY	DMD.2	DX * DMD.2	DY * DMD.1
6-168	- 150709.855			- 38482.185				
KO2	- 150712.617	+ 2.762	+ 2.762	- 38482.442	+ 0.257	+ 0.257	+ 0.709834	+ 0.709834
6-11	- 150713.022	+ 0.405	+ 5.929	- 38489.082	+ 6.640	+ 7.154	+ 2.897370	+ 39.368560
6-173	- 150706.282	- 6.740	- 0.406	- 38488.217	- 0.865	+ 12.929	- 87.141460	+ 0.351190
6-172	- 150707.554	+ 1.272	- 5.874	- 38487.977	- 0.240	+ 11.824	+ 15.040128	+ 1.409760
6-168	- 150709.855	+ 2.301	- 2.301	- 38482.185	- 5.792	+ 5.792	+ 13.327392	+ 13.327392
		+ 6.740			+ 6.897		+ 31.974724	+ 55.166736
		- 6.740			- 6.897		- 87.141460	+ 0.000000
							- 55.166736	+ 55.166736

面積 = 27.583368

西部第3地区 画地計算変更

H5.6.25 変更計算



点名	X	Y	方向角	距離	(XN ₁ -X ₀)(YN-Y ₀)	(XN-X ₀)(YN ₁ -Y ₀)
X ₀ ·Y ₀	-150700.000	-38500.000				
6-25	-150679.482	-38487.823				
6-26	-150693.645	-38488.654	183-21-29	14.187	232.797228	77.384835
6-165	-150694.611	-38493.976	259-42-44	5.409	38.282520	61.143594
6-164	-150691.406	-38494.495	350-48-6	3.247	29.666445	51.770256
6-163	-150690.825	-38495.959	291-38-46	1.575	34.728354	50.508375
6-55	-150681.068	-38497.540	350-47-45	9.884	22.570500	76.504212
6-25	-150679.482	-38487.823	80-43-48	9.846	230.534964	50.474280
					588.580011	367.785552
					220.794459	
					110.39	

倍面積 = 588.580011
面積 = 220.794459
面積 = 110.39

点名	X	Y	方向角	距離	(XN ₁ -X ₀)(YN-Y ₀)	(XN-X ₀)(YN ₁ -Y ₀)
X ₀ ·Y ₀	-150700.000	-38500.000				
6-25	-150679.482	-38487.823				
6-204	-150683.238	-38488.043	183-21-29	3.762	245.333726	204.110874
6-203	-150684.693	-38496.953	260-43-32	9.028	51.073814	183.025799
6-55	-150681.068	-38497.540	350-47-45	3.672	37.655220	57.685804
6-25	-150679.482	-38487.823	80-43-48	9.846	230.534964	50.474280
					564.597724	495.296757
					69.300967	
					34.65	

倍面積 = 564.597724
面積 = 69.300967
面積 = 34.65

点名	X	Y	方向角	距離	(XN ₁ -X ₀)(YN-Y ₀)	(XN-X ₀)(YN ₁ -Y ₀)
X ₀ ·Y ₀	-150700.000	-38500.000				
6-204	-150683.238	-38488.043				
6-26	-150693.645	-38488.654	183-21-29	10.425	190.181652	75.986735
6-165	-150694.611	-38493.976	259-42-44	5.409	38.282520	61.143594
6-164	-150691.406	-38494.495	350-48-6	3.247	29.666445	51.770256
6-163	-150690.825	-38495.959	291-38-46	1.575	34.728354	50.508375
6-203	-150684.693	-38496.953	350-47-45	6.212	27.956225	61.855587
6-204	-150683.238	-38488.043	80-43-32	9.028	183.025799	51.073814
					503.840995	352.338361
					151.502634	
					75.75	

倍面積 = 503.840995
面積 = 151.502634
面積 = 75.75

* * * * * 232-102

面積計算書

* * * * * NO 1

点名	X	DX	DMD.1	Y	DY	DMD.2	DX * DMD.2	DY * DMD.1
6-25	- 150679.482			- 38487.823				
6-204	- 150683.238	+ 3.756	+ 3.756	- 38488.043	+ 0.220	+ 0.220	+ 0.826320	+ 0.826320
6-26	- 150693.645	+ 10.407	+ 17.919	- 38488.654	+ 0.611	+ 1.051	+ 10.937757	+ 10.948509
6-165	- 150694.611	+ 0.966	+ 29.292	- 38493.976	+ 5.322	+ 6.984	+ 6.746544	+ 155.892024
6-164	- 150691.406	- 3.205	+ 27.053	- 38494.495	+ 0.519	+ 12.825	+ 41.104125	+ 14.040507
6-163	- 150690.825	- 0.581	+ 23.267	- 38495.959	+ 1.464	+ 14.808	+ 8.603448	+ 34.062888
6-203	- 150684.693	- 6.132	+ 16.554	- 38496.953	+ 0.994	+ 17.266	+ 105.875112	+ 16.454676
6-55	- 150681.068	- 3.625	+ 6.797	- 38497.540	+ 0.587	+ 18.847	+ 68.320375	+ 3.989839
6-25	- 150679.482	- 1.586	+ 1.586	- 38487.823	- 9.717	+ 9.717	- 15.411162	- 15.411162
		+ 15.129			+ 9.717		+ 18.510621	+ 236.214763
		- 15.129			- 9.717		- 239.314222	- 15.411162
							- 220.803601	+ 220.803601
						面積 =	110.401800	