

4 2 - 3 B L O C K

[

* * * 各筆面積 集計表 * * *

街区名・筆名	各筆面積	隅切面積
42-3 BLOCK	5281.32	
1 LOT	905.89	
2 LOT	54.51	
3 LOT	203.15	
4 LOT	83.20	
5 LOT	115.59	
6 LOT	36.01	
7 LOT	42.81	
8 LOT	8.10	
9 LOT	3.23	
10 LOT	21.53	
11 LOT	28.79	
12 LOT	117.56	
13 LOT	29.88	
14 LOT	37.88	
15 LOT	65.21	
16 LOT	65.23	
17 LOT	1513.83	
18 LOT	392.30	
19 LOT	783.57	{ 19-1 Lot 183.46 m ² 19-2 Lot 46.65 m ² 19-3 Lot 553.46 m ²
20 LOT	342.52	
21 LOT	290.09	
22 LOT	140.35	
5 不切		2.08
6 不切		2.26
合計 =	5281.23	4.34

* * * * * 各 筆 面 積 計 算 書 * * * * *

42-3 BLOCK

点 名	X	Y	(X-X0)*(YN-1-Y0)	(XN-1-X0)*(Y-Y0)
X0·Y0	- 150600.000	- 39000.000		
42-3-1	- 150675.940	- 39164.054		
42-3-2	- 150675.638	- 39157.766	+ 12408.716452	+ 11980.750040
42-3-3	- 150673.305	- 39128.796	+ 11565.036630	+ 9741.871848
42-3-4	- 150667.691	- 39045.939	+ 8718.330036	+ 3367.558395
42-3-7	- 150711.012	- 39046.259	+ 5099.780268	+ 3131.317969
42-3-8	- 150713.201	- 39048.303	+ 5236.565059	+ 5362.212636
42-3-9	- 150720.441	- 39160.382	+ 5817.661623	+ 18155.402782
42-3-10	- 150718.444	- 39162.574	+ 18996.285608	+ 19580.575134
42-3-1	- 150675.940	- 39164.054	+ 12345.869560	+ 19431.211976
			+ 80188.245236	+ 90750.900780
		倍面積	= 10562.655544	
		面積	= 5281.327772	

1 LOT

点 名	X	Y	(X-X0)*(YN-1-Y0)	(XN-1-X0)*(Y-Y0)
X0·Y0	- 150600.000	- 39000.000		
42-3-13	- 150671.170	- 39097.291		
42-3-4	- 150667.691	- 39045.939	+ 6585.725081	+ 3269.478630
42-3-14	- 150684.667	- 39046.064	+ 3889.517313	+ 3118.118224
42-3-40	- 150685.208	- 39051.488	+ 3925.021312	+ 4359.334496
42-3-39	- 150686.621	- 39065.056	+ 4459.942048	+ 5543.291648
42-3-35	- 150689.886	- 39096.065	+ 5847.623616	+ 8321.246365
42-3-13	- 150671.170	- 39097.291	+ 6836.946050	+ 8745.098826
			+ 31544.775420	+ 33356.568189
		倍面積	= 1811.792769	
		面積	= 905.896384	

2 LOT

点 名	X	Y	(X-X0)*(YN-1-Y0)	(XN-1-X0)*(Y-Y0)
X0·Y0	- 150600.000	- 39000.000		
42-3-14	- 150684.667	- 39046.064		
42-3-15	- 150695.017	- 39046.140	+ 4376.863088	+ 3906.535380
42-3-42	- 150694.953	- 39051.699	+ 4381.131420	+ 4912.283883
42-3-41	- 150685.195	- 39051.359	+ 4404.496305	+ 4876.691127
42-3-14	- 150684.667	- 39046.064	+ 4348.412453	+ 3924.422480
			+ 17510.903266	+ 17619.932870
		倍面積	= 109.029604	
		面積	= 54.514802	

* * * * * 各 筆 面 積 計 算 書 * * * * *

3 LOT

点 名	X	Y	(X-X0)*(YN-1-Y0)	(XN-1-X0)*(Y-Y0)
X0·Y0	- 150600.000	- 39000.000		
42-3-15	- 150695.017	- 39046.140		
42-3-16	- 150699.733	- 39046.175	+ 4601.680620	+ 4387.409975
42-3-44	- 150698.387	- 39065.354	+ 4543.019725	+ 6517.950482
42-3-43	- 150698.364	- 39065.612	+ 6428.480856	+ 6455.367844
42-3-39	- 150686.621	- 39065.056	+ 5683.377052	+ 6399.168384
42-3-40	- 150685.208	- 39051.488	+ 5543.291648	+ 4459.942048
42-3-41	- 150685.195	- 39051.359	+ 4386.520160	+ 4376.197672
42-3-42	- 150694.953	- 39051.699	+ 4876.691127	+ 4404.496305
42-3-15	- 150695.017	- 39046.140	+ 4912.283883	+ 4381.131420
			+ 40975.345071	+ 41381.664130
		倍面積	= 406.319059	
		面積	= 203.159529	

4 LOT

点 名	X	Y	(X-X0)*(YN-1-Y0)	(XN-1-X0)*(Y-Y0)
X0·Y0	- 150600.000	- 39000.000		
42-3-16	- 150699.733	- 39046.175		
42-3-17	- 150703.735	- 39046.205	+ 4789.963625	+ 4608.163265
42-3-46	- 150702.976	- 39065.678	+ 4758.006080	+ 6813.107330
42-3-44	- 150698.387	- 39065.354	+ 6461.861386	+ 6729.893504
42-3-16	- 150699.733	- 39046.175	+ 6517.950482	+ 4543.019725
			+ 22527.781573	+ 22694.183824
		倍面積	= 166.402251	
		面積	= 83.201125	

5 LOT

点 名	X	Y	(X-X0)*(YN-1-Y0)	(XN-1-X0)*(Y-Y0)
X0·Y0	- 150700.000	- 39000.000		
42-3-17	- 150703.735	- 39046.205		
42-3-18	- 150707.787	- 39046.235	+ 359.798335	+ 172.687725
42-3-54	- 150707.202	- 39061.206	+ 332.984470	+ 476.611122
42-3-52	- 150707.064	- 39064.761	+ 432.359184	+ 466.408722
42-3-50	- 150706.671	- 39074.833	+ 432.020631	+ 528.620312
42-3-45	- 150702.626	- 39074.658	+ 196.511458	+ 498.043518
42-3-17	- 150703.735	- 39046.205	+ 278.847630	+ 121.334330
			+ 2032.521708	+ 2263.705729
		倍面積	= 231.184021	
		面積	= 115.592010	

* * * * * 各 筆 面 積 計 算 書 * * * * *

6 LOT

点 名	X	Y	(X-X0)*(YN-1-Y0)	(XN-1-X0)*(Y-Y0)
X0·Y0	- 150700.000	- 39000.000		
42-3-18	- 150707.787	- 39046.235		
42-3-7	- 150711.012	- 39046.259	+ 509.139820	+ 360.218833
42-3-8	- 150713.201	- 39048.303	+ 610.665059	+ 531.912636
42-3-19	- 150713.493	- 39052.819	+ 651.752379	+ 697.263619
42-3-56	- 150707.514	- 39053.218	+ 396.881966	+ 718.070474
42-3-18	- 150707.787	- 39046.235	+ 414.408566	+ 347.409790
			+ 2582.847790	+ 2654.875352
		倍面積	= 72.027562	
		面積	= 36.013781	

7 LOT

点 名	X	Y	(X-X0)*(YN-1-Y0)	(XN-1-X0)*(Y-Y0)
X0·Y0	- 150700.000	- 39000.000		
42-3-19	- 150713.493	- 39052.819		
42-3-20	- 150713.928	- 39059.556	+ 735.663032	+ 803.589108
42-3-55	- 150707.249	- 39060.001	+ 431.721444	+ 835.693928
42-3-56	- 150707.514	- 39053.218	+ 450.847514	+ 385.777282
42-3-19	- 150713.493	- 39052.819	+ 718.070474	+ 396.881966
			+ 2336.302464	+ 2421.942284
		倍面積	= 85.639820	
		面積	= 42.819910	

8 LOT

点 名	X	Y	(X-X0)*(YN-1-Y0)	(XN-1-X0)*(Y-Y0)
X0·Y0	- 150700.000	- 39000.000		
42-3-20	- 150713.928	- 39059.556		
42-3-21	- 150714.005	- 39060.754	+ 834.081780	+ 846.181712
42-3-54	- 150707.202	- 39061.206	+ 437.550308	+ 857.190030
42-3-55	- 150707.249	- 39060.001	+ 443.682294	+ 432.127202
42-3-20	- 150713.928	- 39059.556	+ 835.693928	+ 431.721444
			+ 2551.008310	+ 2567.220388
		倍面積	= 16.212078	
		面積	= 8.106039	

9 LOT

点 名	X	Y	(X-X0)*(YN-1-Y0)	(XN-1-X0)*(Y-Y0)
X0·Y0	- 150700.000	- 39000.000		
42-3-21	- 150714.005	- 39060.754		
42-3-22	- 150714.035	- 39061.226	+ 852.682390	+ 857.470130

* * * * * 各 筆 面 積 計 算 書 * * * * *

点 名	X	Y	(X-X0)*(YN-1-Y0)	(XN-1-X0)*(Y-Y0)
42-3-53	150707.183	39061.682	+ 439.786358	+ 865.706870
42-3-54	150707.202	39061.206	+ 444.233764	+ 439.642698
42-3-21	150714.005	39060.754	+ 857.190030	+ 437.550308
			+ 2593.892542	+ 2600.370006
		倍面積	= 6.477464	
		面積	= 3.238732	

10 LOT

点 名	X	Y	(X-X0)*(YN-1-Y0)	(XN-1-X0)*(Y-Y0)
X0-Y0	150700.000	39000.000		
42-3-22	150714.035	39061.226		
42-3-23	150714.233	39064.286	+ 871.429658	+ 902.254010
42-3-52	150707.064	39064.761	+ 454.116304	+ 921.743313
42-3-53	150707.183	39061.682	+ 465.178263	+ 435.721648
42-3-22	150714.035	39061.226	+ 865.706870	+ 439.786358
			+ 2656.431095	+ 2699.505329
		倍面積	= 43.074234	
		面積	= 21.537117	

11 LOT

点 名	X	Y	(X-X0)*(YN-1-Y0)	(XN-1-X0)*(Y-Y0)
X0-Y0	150700.000	39000.000		
42-3-23	150714.233	39064.286		
42-3-24	150714.484	39068.174	+ 931.118424	+ 970.320542
42-3-51	150706.911	39068.679	+ 471.150514	+ 994.746636
42-3-52	150707.064	39064.761	+ 485.148456	+ 447.563271
42-3-23	150714.233	39064.286	+ 921.743313	+ 454.116304
			+ 2809.160707	+ 2866.746753
		倍面積	= 57.586046	
		面積	= 28.793023	

12 LOT

点 名	X	Y	(X-X0)*(YN-1-Y0)	(XN-1-X0)*(Y-Y0)
X0-Y0	150700.000	39000.000		
42-3-24	150714.484	39068.174		
42-3-25	150715.395	39082.268	+ 1049.538730	+ 1191.569712
42-3-49	150706.357	39082.872	+ 522.977676	+ 1275.814440
42-3-51	150706.911	39068.679	+ 572.728392	+ 436.592403
42-3-24	150714.484	39068.174	+ 994.746636	+ 471.150514
			+ 3139.991434	+ 3375.127069
		倍面積	= 235.135635	
		面積	= 117.567817	

* * * * * 各 筆 面 積 計 算 書 * * * * *

13 LOT

点 名	X	Y	(X-X0)*(YN-1-Y0)	(XN-1-X0)*(Y-Y0)
X0·Y0	- 150700.000	- 39000.000		
42-3-25	- 150715.395	- 39082.268		
42-3-26	- 150715.604	- 39085.499	+ 1283.709872	+ 1316.257105
42-3-48	- 150706.230	- 39086.127	+ 532.658770	+ 1343.925708
42-3-49	- 150706.357	- 39082.872	+ 547.509339	+ 516.292560
42-3-25	- 150715.395	- 39082.268	+ 1275.814440	+ 522.977676
			+ 3639.692421	+ 3699.453049
		倍面積	= 59.760628	
		面積	= 29.880314	

14 LOT

点 名	X	Y	(X-X0)*(YN-1-Y0)	(XN-1-X0)*(Y-Y0)
X0·Y0	- 150700.000	- 39000.000		
42-3-26	- 150715.604	- 39085.499		
42-3-27	- 150715.859	- 39089.450	+ 1355.928641	+ 1395.777800
42-3-47	- 150706.076	- 39090.079	+ 543.498200	+ 1428.562861
42-3-48	- 150706.230	- 39086.127	+ 561.192170	+ 523.307652
42-3-26	- 150715.604	- 39085.499	+ 1343.925708	+ 532.658770
			+ 3804.544719	+ 3880.307083
		倍面積	= 75.762364	
		面積	= 37.881182	

15 LOT

点 名	X	Y	(X-X0)*(YN-1-Y0)	(XN-1-X0)*(Y-Y0)
X0·Y0	- 150600.000	- 39000.000		
42-3-27	- 150715.859	- 39089.450		
42-3-28	- 150716.017	- 39091.903	+ 10377.720650	+ 10647.789677
42-3-36	- 150689.627	- 39093.605	+ 8236.990181	+ 10859.771285
42-3-37	- 150689.369	- 39091.152	+ 8365.385245	+ 8169.680304
42-3-27	- 150715.859	- 39089.450	+ 10560.779568	+ 7994.057050
			+ 37540.875644	+ 37671.298316
		倍面積	= 130.422672	
		面積	= 65.211336	

16 LOT

点 名	X	Y	(X-X0)*(YN-1-Y0)	(XN-1-X0)*(Y-Y0)
X0·Y0	- 150600.000	- 39000.000		
42-3-28	- 150716.017	- 39091.903		
42-3-29	- 150716.176	- 39094.369	+ 10676.922928	+ 10948.408273
42-3-35	- 150689.886	- 39096.065	+ 8482.451934	+ 11160.447440

* * * * * 各 筆 面 積 計 算 書 * * * * *

点 名	X	Y	(X-X0)*(YN-1-Y0)	(XN-1-X0)*(Y-Y0)
42-3-36	- 150689.627	- 39093.605	+ 8610.017755	+ 8413.779030
42-3-28	- 150716.017	- 39091.903	+ 10859.771285	+ 8236.990181
			+ 38629.163902	+ 38759.624924
		倍面積	= 130.461022	
		面積	= 65.230511	

17 LOT

点 名	X	Y	(X-X0)*(YN-1-Y0)	(XN-1-X0)*(Y-Y0)
X0-Y0	- 150600.000	- 39000.000		
42-3-29	- 150716.176	- 39094.369		
42-3-30	- 150718.332	- 39127.746	+ 11166.872508	+ 14841.019296
42-3-12	- 150673.480	- 39130.966	+ 9386.776080	+ 15497.468712
42-3-3	- 150673.305	- 39128.796	+ 9600.462630	+ 9463.930080
42-3-13	- 150671.170	- 39097.291	+ 9166.411320	+ 7131.916755
42-3-35	- 150689.886	- 39096.065	+ 8745.098826	+ 6836.946050
42-3-29	- 150716.176	- 39094.369	+ 11160.447440	+ 8482.451934
			+ 59226.068804	+ 62253.732827
		倍面積	= 3027.664023	
		面積	= 1513.832011	

18 LOT

点 名	X	Y	(X-X0)*(YN-1-Y0)	(XN-1-X0)*(Y-Y0)
X0-Y0	- 150600.000	- 39100.000		
42-3-30	- 150718.332	- 39127.746		
42-3-31	- 150718.896	- 39136.464	+ 3298.888416	+ 4314.858048
42-3-11	- 150674.181	- 39139.677	+ 2704.935984	+ 4717.436592
42-3-12	- 150673.480	- 39130.966	+ 2915.465960	+ 2297.088846
42-3-30	- 150718.332	- 39127.746	+ 3664.268712	+ 2038.776080
			+ 12583.559072	+ 13368.159566
		倍面積	= 784.600494	
		面積	= 392.300247	

~~19 LOT~~

点 名	X	Y	(X-X0)*(YN-1-Y0)	(XN-1-X0)*(Y-Y0)
X0-Y0	- 150600.000	- 39100.000		
42-3-31	- 150718.896	- 39136.464		
42-3-32	- 150719.530	- 39146.281	+ 4358.541920	+ 5502.625776
42-3-34	- 150698.296	- 39147.447	+ 4549.237176	+ 5671.339910
42-3-33	- 150698.846	- 39163.256	+ 4689.946162	+ 6217.811776
42-3-1	- 150675.940	- 39164.054	+ 4803.660640	+ 6331.481684
42-3-2	- 150675.638	- 39157.766	+ 4844.916452	+ 4386.750040
42-3-11	- 150674.181	- 39139.677	+ 4285.139646	+ 3001.088926

* * * * * 各 筆 面 積 計 算 書 * * * * *

点 名	X	Y	(X-X0)*(YN-1-Y0)	(XN-1-X0)*(Y-Y0)
42-3-31	150718.896	39136.464	+ 4717.436592	+ 2704.935984
			+ 32248.878588	+ 33816.034096
		倍面積	= 1567.155508	
		面積	= 783.577754	

20 LOT

点 名	X	Y	(X-X0)*(YN-1-Y0)	(XN-1-X0)*(Y-Y0)
X0-Y0	150600.000	39100.000		
42-3-32	150719.530	39146.281		
42-3-9	150720.441	39160.382	+ 5574.129921	+ 7217.460460
42-3-10	150718.444	39162.574	+ 7151.885608	+ 7536.475134
42-3-33	150698.846	39163.256	+ 6185.189604	+ 7492.293664
42-3-34	150698.296	39147.447	+ 6217.811776	+ 4689.946162
42-3-32	150719.530	39146.281	+ 5671.339910	+ 4549.237176
			+ 30800.356819	+ 31485.412596
		倍面積	= 685.055777	
		面積	= 342.527888	

21 LOT

点 名	X	Y	(X-X0)*(YN-1-Y0)	(XN-1-X0)*(Y-Y0)
X0-Y0	150600.000	39000.000		
42-3-47	150706.076	39090.079		
42-3-37	150689.369	39091.152	+ 8050.270151	+ 9669.039552
42-3-38	150687.563	39074.007	+ 7981.542576	+ 6613.931583
42-3-50	150706.671	39074.833	+ 7894.400697	+ 6552.601979
42-3-47	150706.076	39090.079	+ 7937.985308	+ 9608.817009
			+ 31864.198732	+ 32444.390123
		倍面積	= 580.191391	
		面積	= 290.095695	

22 LOT

点 名	X	Y	(X-X0)*(YN-1-Y0)	(XN-1-X0)*(Y-Y0)
X0-Y0	150600.000	39000.000		
42-3-38	150687.563	39074.007		
42-3-39	150686.621	39065.056	+ 6410.560347	+ 5696.498528
42-3-43	150698.364	39065.612	+ 6399.168384	+ 5683.377052
42-3-44	150698.387	39065.354	+ 6455.367844	+ 6428.480856
42-3-46	150702.976	39065.678	+ 6729.893504	+ 6461.861386
42-3-45	150702.626	39074.658	+ 6740.270428	+ 7687.982208
42-3-38	150687.563	39074.007	+ 6537.278454	+ 7595.042382
			+ 39272.538961	+ 39553.242412
		倍面積	= 280.703451	
		面積	= 140.351725	

* * * * * 各 筆 面 積 計 算 書 * * * * *

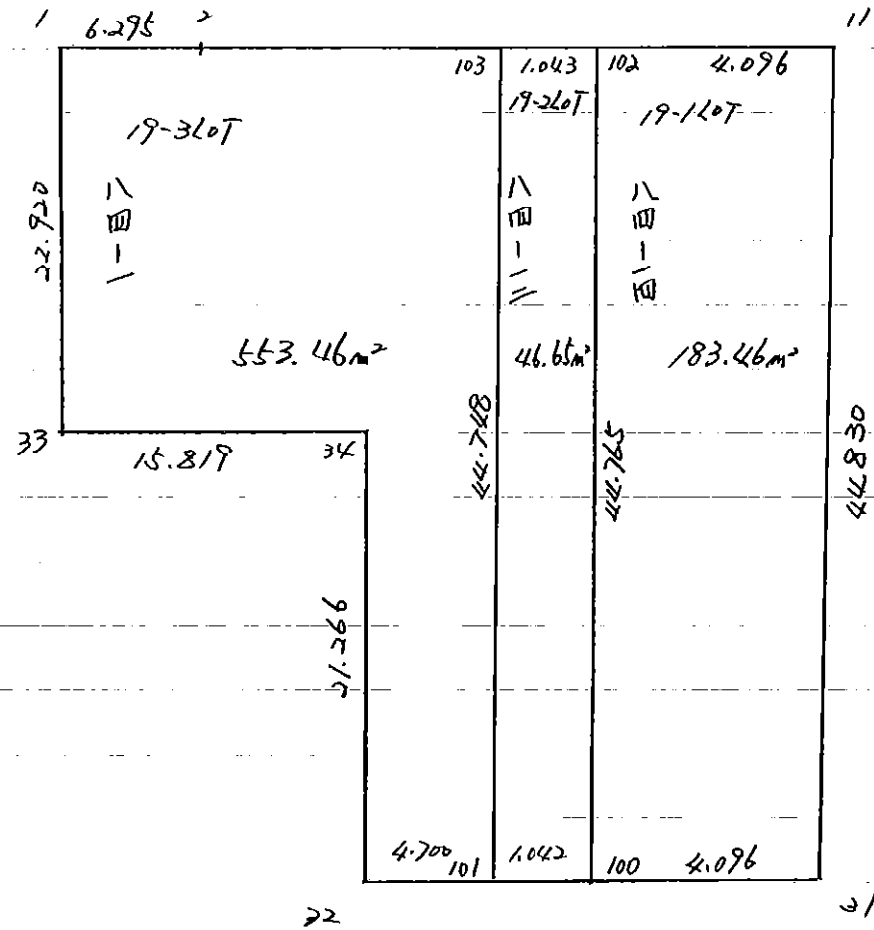
5 区判

点 名	X	Y	(X-X0)*(YN-1-Y0)	(XN-1-X0)*(Y-Y0)
X0-Y0	- 150700.000	- 39000.000		
42-3-5	- 150713.070	- 39046.274		
42-3-7	- 150711.012	- 39046.259	+ 509.569288	+ 604.605130
42-3-8	- 150713.201	- 39048.303	+ 610.665059	+ 531.912636
42-3-5	- 150713.070	- 39046.274	+ 631.320210	+ 610.863074
			+ 1751.554557	+ 1747.380840
		倍面積	= 4.173717	
		面積	= 2.086858	

6 区判

点 名	X	Y	(X-X0)*(YN-1-Y0)	(XN-1-X0)*(Y-Y0)
X0-Y0	- 150700.000	- 39100.000		
42-3-6	- 150720.578	- 39162.500		
42-3-9	- 150720.441	- 39160.382	+ 1277.562500	+ 1242.540796
42-3-10	- 150718.444	- 39162.574	+ 1113.685608	+ 1279.075134
42-3-6	- 150720.578	- 39162.500	+ 1287.647772	+ 1152.750000
			+ 3678.895880	+ 3674.365930
		倍面積	= 4.529950	
		面積	= 2.264975	

42-3 Block



* * * * 19-1 LOT

面積計算書

* * * * NO 1

点名	X	DX	DMD.1	Y	DY	DMD.2	DX * DMD.2	DY * DMD.1
42-3-11	- 150674.181			- 39139.677				
42-3-31	- 150718.896	+ 44.715	+ 44.715	- 39136.464	- 3.213	- 3.213	- 143.669295	- 143.669295
42-3-100	- 150719.160	+ 0.264	+ 89.694	- 39140.551	+ 4.087	- 2.339	- 0.617496	+ 366.579378
42-3-102	- 150674.510	- 44.650	+ 45.308	- 39143.759	+ 3.208	+ 4.956	- 221.285400	+ 145.348064
42-3-11	- 150674.181	- 0.329	+ 0.329	- 39139.677	- 4.082	+ 4.082	- 1.342978	- 1.342978
		+ 44.979			+ 7.295		+ 0.000000	+ 511.927442
		- 44.979			- 7.295		- 366.915169	- 145.012273
							- 366.915169	+ 366.915169

面積 = $\frac{183.457584}{183.46}$

確定後変更にて端数調整

* * * * 19-2 LOT

面積計算書

* * * * NO 1

点名	X	DX	DMD.1	Y	DY	DMD.2	DX * DMD.2	DY * DMD.1
42-3-102	- 150674.510			- 39143.759				
42-3-100	- 150719.160	+ 44.650	+ 44.650	- 39140.551	- 3.208	- 3.208	- 143.237200	- 143.237200
42-3-101	- 150719.227	+ 0.067	+ 89.367	- 39141.591	+ 1.040	- 5.376	+ 0.360192	+ 92.941680
42-3-103	- 150674.594	- 44.633	+ 44.801	- 39144.798	+ 3.207	- 1.129	+ 50.390657	+ 143.676807
42-3-102	- 150674.510	- 0.084	+ 0.084	- 39143.759	- 1.039	+ 1.039	- 0.087276	- 0.087276
		+ 44.717			+ 4.247		+ 50.390657	+ 236.618487
		- 44.717			- 4.247		- 143.684668	- 143.324476
							+ 93.294011	+ 93.294011

面積 = ~~46.647885~~
46.65

確定後変更につき端数調整

* * * * 19-3 LOT

面積計算書

* * * * NO 1

点名	X	DX	DMD.1	Y	DY	DMD.2	DX * DMD.2	DY * DMD.1
42-3-103	- 150674.594			- 39144.798				
42-3-101	- 150719.227	+ 44.633	+ 44.633	- 39141.591	- 3.207	- 3.207	- 143.138031	- 143.138031
42-3-32	- 150719.530	+ 0.303	+ 89.569	- 39146.281	+ 4.690	- 1.724	+ 0.522372	+ 420.078610
42-3-34	- 150698.296	- 21.234	+ 68.638	- 39147.447	+ 1.166	+ 4.132	+ 87.738888	+ 80.031908
42-3-33	- 150698.846	+ 0.550	+ 47.954	- 39163.256	+ 15.809	+ 21.107	+ 11.608850	+ 758.104786
42-3-1	- 150675.940	- 22.906	+ 25.598	- 39164.054	+ 0.798	+ 37.714	+ 863.876884	+ 20.427204
42-3-2	- 150675.638	- 0.302	+ 2.390	- 39157.766	- 6.288	+ 32.224	- 9.731648	- 15.028320
42-3-103	- 150674.594	- 1.044	+ 1.044	- 39144.798	- 12.968	+ 12.968	- 13.538592	- 13.538592
		+ 45.486			+ 22.463		+ 11.608850	+ 1278.642508
		- 45.486			- 22.463		- 1118.546415	- 171.704943
							- 1106.937565	+ 1106.937565
						面積 =	553.468782	