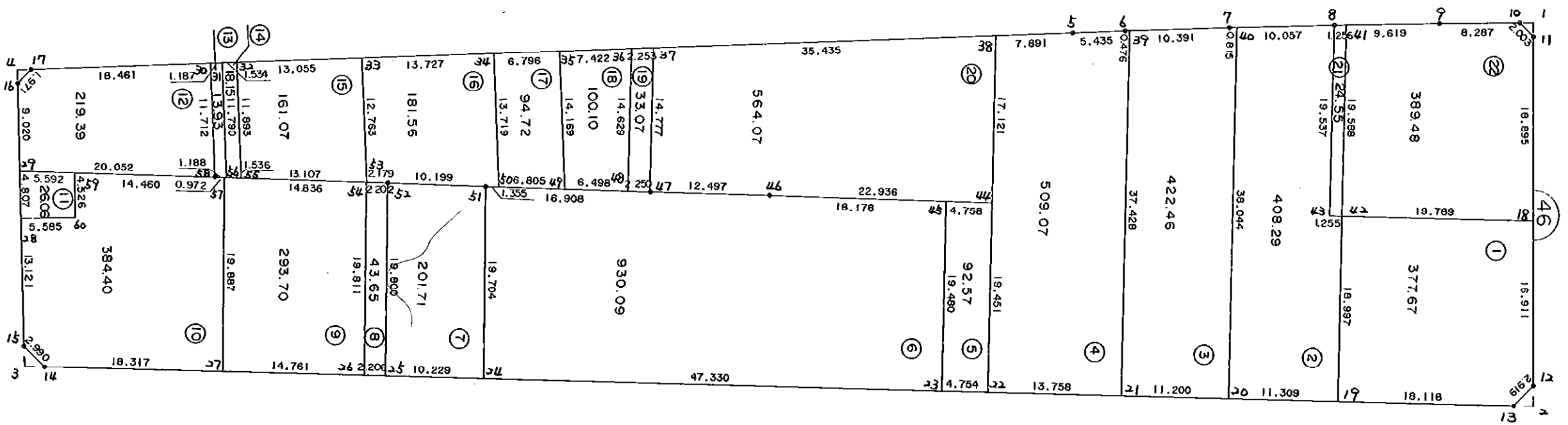


4 6 B L O C K

1



\* \* \* 各筆面積 集計表 \* \* \*

街区名・筆名	各筆面積	隅切面積
46 BLOCK	5489.87	
1 LOT	377.67	
2 LOT	408.29	
3 LOT	422.46	
4 LOT	509.07	
5 LOT	92.57	
6 LOT	930.09	
7 LOT	201.71	
8 LOT	43.65	
9 LOT	293.70	
10 LOT	384.40	
11 LOT	26.06	
12 LOT	219.39	
13 LOT	13.93	
14 LOT	18.15	
15 LOT	161.07	
16 LOT	181.56	
17 LOT	94.72	
18 LOT	100.10	
19 LOT	33.07	
20 LOT	564.07	
21 LOT	24.55	
22 LOT	389.48	
1 スミキリ		1.01
2 スミキリ		2.17
3 スミキリ		2.13
4 スミキリ		0.95
合計 =	5489.76	6.26

\* \* \* \* \* 各 筆 面 積 計 算 書 \* \* \* \* \*

46 BLOCK

点 名	X	Y	(X-X0)*(YN-1-Y0)	(XN-1-X0)*(Y-Y0)
X0·Y0	- 150700.000	- 39100.000		
46-10	- 150731.593	- 39218.521		
46-11	- 150730.076	- 39217.213	+ 3564.637596	+ 3703.110309
46-12	- 150727.820	- 39181.478	+ 3260.865660	+ 2450.532328
46-13	- 150729.761	- 39179.298	+ 2424.866758	+ 2206.070360
46-14	- 150881.616	- 39173.063	+ 14401.785568	+ 2174.427943
46-15	- 150883.859	- 39175.040	+ 13433.290117	+ 13628.464640
46-16	- 150886.201	- 39201.886	+ 13972.523040	+ 18732.658074
46-17	- 150884.939	- 39203.400	+ 18842.694954	+ 19253.183400
46-5	- 150777.743	- 39214.416	+ 8038.626200	+ 21159.980624
46-6	- 150772.338	- 39214.984	+ 8276.624608	+ 8939.201112
46-7	- 150761.522	- 39216.031	+ 7074.045648	+ 8393.450478
46-8	- 150750.694	- 39217.004	+ 5882.075514	+ 7198.320088
46-9	- 150739.856	- 39217.896	+ 4663.311424	+ 5976.619824
46-10	- 150731.593	- 39218.521	+ 3724.688328	+ 4723.772976
			+107560.035415	+118539.792156
		倍面積	= 10979.756741	
		面積	= 5489.878370	

1 LOT

点 名	X	Y	(X-X0)*(YN-1-Y0)	(XN-1-X0)*(Y-Y0)
X0·Y0	- 150700.000	- 39100.000		
46-12	- 150727.820	- 39181.478		
46-13	- 150729.761	- 39179.298	+ 2424.866758	+ 2206.070360
46-19	- 150747.864	- 39178.555	+ 3795.519472	+ 2337.875355
46-42	- 150748.657	- 39197.535	+ 3822.250635	+ 4668.415240
46-18	- 150728.885	- 39198.355	+ 2817.298475	+ 4785.659235
46-12	- 150727.820	- 39181.478	+ 2736.236100	+ 2353.492030
			+ 15596.171440	+ 16351.512220
		倍面積	= 755.340780	
		面積	= 377.670390	

2 LOT

点 名	X	Y	(X-X0)*(YN-1-Y0)	(XN-1-X0)*(Y-Y0)
X0·Y0	- 150700.000	- 39100.000		
46-8	- 150750.694	- 39217.004		
46-43	- 150749.911	- 39197.483	+ 5839.786644	+ 4941.803202
46-42	- 150748.657	- 39197.535	+ 4743.230331	+ 4868.069385
46-19	- 150747.864	- 39178.555	+ 4668.415240	+ 3822.250635
46-20	- 150759.163	- 39178.091	+ 4647.549465	+ 3737.747624
46-40	- 150760.710	- 39216.104	+ 4740.904610	+ 6869.060952
46-8	- 150750.694	- 39217.004	+ 5885.776176	+ 7103.312840

\* \* \* \* \* 各 筆 面 積 計 算 書 \* \* \* \* \*

点 名	X	Y	(X-X0)*(YN-1-Y0)	(XN-1-X0)*(Y-Y0)
			+ 30525.662466	+ 31342.244638
		倍面積	= 816.582172	
		面積	= 408.291086	

3 LOT

点 名	X	Y	(X-X0)*(YN-1-Y0)	(XN-1-X0)*(Y-Y0)
X0·Y0	- 150700.000	- 39100.000		
46-20	- 150759.163	- 39178.091		
46-21	- 150770.354	- 39177.632	+ 5494.014214	+ 4592.942016
46-39	- 150771.864	- 39215.030	+ 5578.946048	+ 8092.820620
46-7	- 150761.522	- 39216.031	+ 7076.875660	+ 8338.451784
46-40	- 150760.710	- 39216.104	+ 7044.242010	+ 7142.950288
46-20	- 150759.163	- 39178.091	+ 6869.060952	+ 4740.904610
			+ 32063.138884	+ 32908.069318
		倍面積	= 844.930434	
		面積	= 422.465217	

4 LOT

点 名	X	Y	(X-X0)*(YN-1-Y0)	(XN-1-X0)*(Y-Y0)
X0·Y0	- 150700.000	- 39100.000		
46-21	- 150770.354	- 39177.632		
46-22	- 150784.100	- 39177.068	+ 6528.851200	+ 5422.042072
46-44	- 150784.880	- 39196.503	+ 6541.531840	+ 8115.902300
46-38	- 150785.593	- 39213.609	+ 8259.981279	+ 9643.131920
46-5	- 150777.743	- 39214.416	+ 8832.304487	+ 9793.208688
46-6	- 150772.338	- 39214.984	+ 8276.624608	+ 8939.201112
46-39	- 150771.864	- 39215.030	+ 8263.210176	+ 8321.040140
46-21	- 150770.354	- 39177.632	+ 8092.820620	+ 5578.946048
			+ 54795.324210	+ 55813.472280
		倍面積	= 1018.148070	
		面積	= 509.074035	

5 LOT

点 名	X	Y	(X-X0)*(YN-1-Y0)	(XN-1-X0)*(Y-Y0)
X0·Y0	- 150700.000	- 39100.000		
46-22	- 150784.100	- 39177.068		
46-23	- 150788.850	- 39176.873	+ 6847.491800	+ 6465.019300
46-45	- 150789.635	- 39196.337	+ 6890.511355	+ 8559.542450
46-44	- 150784.880	- 39196.503	+ 8177.084560	+ 8650.046405
46-22	- 150784.100	- 39177.068	+ 8115.902300	+ 6541.531840
			+ 30030.990015	+ 30216.139995
		倍面積	= 185.149980	
		面積	= 92.574990	

\* \* \* \* \* 各 筆 面 積 計 算 書 \* \* \* \* \*

6 LOT

点 名	X	Y	(X-X0)*(YN-1-Y0)	(XN-1-X0)*(Y-Y0)
X0·Y0	- 150700.000	- 39100.000		
46-23	- 150788.850	- 39176.873		
46-24	- 150836.141	- 39174.930	+ 10465.567093	+ 6657.530500
46-51	- 150837.187	- 39194.606	+ 10279.421910	+ 12879.755446
46-47	- 150820.290	- 39195.220	+ 11380.155740	+ 13062.946140
46-46	- 150807.802	- 39195.701	+ 10264.906440	+ 11511.873290
46-45	- 150789.635	- 39196.337	+ 8578.159135	+ 10385.321274
46-23	- 150788.850	- 39176.873	+ 8559.542450	+ 6890.511355
			+ 59527.752768	+ 61387.938005
		倍面積	= 1860.185237	
		面積	= 930.092618	

7 LOT

点 名	X	Y	(X-X0)*(YN-1-Y0)	(XN-1-X0)*(Y-Y0)
X0·Y0	- 150800.000	- 39100.000		
46-24	- 150836.141	- 39174.930		
46-25	- 150846.361	- 39174.510	+ 3473.829730	+ 2692.865910
46-52	- 150847.381	- 39194.284	+ 3530.358310	+ 4371.100524
46-51	- 150837.187	- 39194.606	+ 3506.139108	+ 4482.526886
46-24	- 150836.141	- 39174.930	+ 3419.155446	+ 2786.421910
			+ 13929.482594	+ 14332.915230
		倍面積	= 403.432636	
		面積	= 201.716318	

8 LOT

点 名	X	Y	(X-X0)*(YN-1-Y0)	(XN-1-X0)*(Y-Y0)
X0·Y0	- 150800.000	- 39100.000		
46-25	- 150846.361	- 39174.510		
46-26	- 150848.565	- 39174.420	+ 3618.578150	+ 3450.185620
46-54	- 150849.582	- 39194.205	+ 3689.892440	+ 4575.065825
46-52	- 150847.381	- 39194.284	+ 4463.527105	+ 4674.789288
46-25	- 150846.361	- 39174.510	+ 4371.100524	+ 3530.358310
			+ 16143.098219	+ 16230.399043
		倍面積	= 87.300824	
		面積	= 43.650412	

9 LOT

点 名	X	Y	(X-X0)*(YN-1-Y0)	(XN-1-X0)*(Y-Y0)
X0·Y0	- 150800.000	- 39100.000		
46-26	- 150848.565	- 39174.420		
46-27	- 150863.314	- 39173.814	+ 4711.827880	+ 3584.776910

\* \* \* \* \* 各 筆 面 積 計 算 書 \* \* \* \* \*

点 名	X	Y	(X-X0)*(YN-1-Y0)	(XN-1-X0)*(Y-Y0)
46-57	- 150864.408	- 39193.671	+ 4754.212112	+ 5930.685694
46-54	- 150849.582	- 39194.205	+ 4644.395522	+ 6067.555640
46-26	- 150848.565	- 39174.420	+ 4575.065825	+ 3689.892440
			+ 18685.501339	+ 19272.910684
		倍面積	= 587.409345	
		面積	= 293.704672	

10 LOT

点 名	X	Y	(X-X0)*(YN-1-Y0)	(XN-1-X0)*(Y-Y0)
X0·Y0	- 150800.000	- 39100.000		
46-14	- 150881.616	- 39173.063		
46-15	- 150883.859	- 39175.040	+ 6126.990117	+ 6124.464640
46-28	- 150885.000	- 39188.111	+ 6378.400000	+ 7388.900349
46-60	- 150879.436	- 39188.596	+ 6999.185396	+ 7530.660000
46-59	- 150879.829	- 39193.105	+ 7072.530084	+ 7395.888780
46-58	- 150865.379	- 39193.636	+ 6087.111795	+ 7474.868244
46-57	- 150864.408	- 39193.671	+ 6030.907488	+ 6124.116309
46-27	- 150863.314	- 39173.814	+ 5930.685694	+ 4754.212112
46-14	- 150881.616	- 39173.063	+ 6024.403424	+ 4625.910782
			+ 50650.213998	+ 51419.021216
		倍面積	= 768.807218	
		面積	= 384.403609	

11 LOT

点 名	X	Y	(X-X0)*(YN-1-Y0)	(XN-1-X0)*(Y-Y0)
X0·Y0	- 150800.000	- 39100.000		
46-28	- 150885.000	- 39188.111		
46-29	- 150885.417	- 39192.900	+ 7526.177287	+ 7896.500000
46-59	- 150879.829	- 39193.105	+ 7416.114100	+ 7952.749785
46-60	- 150879.436	- 39188.596	+ 7395.888780	+ 7072.530084
46-28	- 150885.000	- 39188.111	+ 7530.660000	+ 6999.185396
			+ 29868.840167	+ 29920.965265
		倍面積	= 52.125098	
		面積	= 26.062549	

12 LOT

点 名	X	Y	(X-X0)*(YN-1-Y0)	(XN-1-X0)*(Y-Y0)
X0·Y0	- 150800.000	- 39100.000		
46-16	- 150886.201	- 39201.886		
46-17	- 150884.939	- 39203.400	+ 8654.094954	+ 8913.183400
46-30	- 150866.575	- 39205.287	+ 6883.855000	+ 8942.972493
46-58	- 150865.379	- 39193.636	+ 6883.558773	+ 6233.816700

\* \* \* \* \* 各 筆 面 積 計 算 書 \* \* \* \* \*

点 名	X	Y	(X-X0)*(YN-1-Y0)	(XN-1-X0)*(Y-Y0)
46-29	- 150885.417	- 39192.900	+ 7998.106212	+ 6073.709100
46-16	- 150886.201	- 39201.886	+ 8008.072900	+ 8702.796462
			+ 38427.687839	+ 38866.478155
		倍面積	= 438.790316	
		面積	= 219.395158	

13 LOT

点 名	X	Y	(X-X0)*(YN-1-Y0)	(XN-1-X0)*(Y-Y0)
X0-Y0	- 150800.000	- 39100.000		
46-30	- 150866.575	- 39205.287		
46-31	- 150865.394	- 39205.408	+ 6885.138078	+ 7017.537600
46-56	- 150864.192	- 39193.679	+ 6766.350336	+ 6126.044526
46-58	- 150865.379	- 39193.636	+ 6124.639341	+ 6010.682112
46-30	- 150866.575	- 39205.287	+ 6233.816700	+ 6883.558773
			+ 26009.944455	+ 26037.823011
		倍面積	= 27.878556	
		面積	= 13.939278	

14 LOT

点 名	X	Y	(X-X0)*(YN-1-Y0)	(XN-1-X0)*(Y-Y0)
X0-Y0	- 150800.000	- 39100.000		
46-31	- 150865.394	- 39205.408		
46-32	- 150863.868	- 39205.565	+ 6732.198144	+ 6903.317610
46-55	- 150862.657	- 39193.734	+ 6614.386205	+ 5986.603112
46-56	- 150864.192	- 39193.679	+ 6016.972928	+ 5869.645103
46-31	- 150865.394	- 39205.408	+ 6126.044526	+ 6766.350336
			+ 25489.601803	+ 25525.916161
		倍面積	= 36.314358	
		面積	= 18.157179	

15 LOT

点 名	X	Y	(X-X0)*(YN-1-Y0)	(XN-1-X0)*(Y-Y0)
X0-Y0	- 150800.000	- 39100.000		
46-32	- 150863.868	- 39205.565		
46-33	- 150850.881	- 39206.900	+ 5371.252765	+ 6827.489200
46-53	- 150849.559	- 39194.206	+ 5297.857100	+ 4793.295486
46-55	- 150862.657	- 39193.734	+ 5902.665342	+ 4645.363306
46-32	- 150863.868	- 39205.565	+ 5986.603112	+ 6614.386205
			+ 22558.378319	+ 22880.534197
		倍面積	= 322.155878	
		面積	= 161.077939	



\* \* \* \* \* 各 筆 面 積 計 算 書 \* \* \* \* \*

16 LOT

点 名	X	Y	(X-X0)*(YN-1-Y0)	(XN-1-X0)*(Y-Y0)
X0·Y0	- 150800.000	- 39100.000		
46-33	- 150850.881	- 39206.900		
46-34	- 150837.226	- 39208.303	+ 3979.459400	+ 5510.564943
46-50	- 150835.833	- 39194.655	+ 3880.821399	+ 3523.627030
46-51	- 150837.187	- 39194.606	+ 3519.935485	+ 3390.016798
46-52	- 150847.381	- 39194.284	+ 4482.526886	+ 3506.139108
46-53	- 150849.559	- 39194.206	+ 4672.620756	+ 4463.574486
46-33	- 150850.881	- 39206.900	+ 4793.295486	+ 5297.857100
			+ 25328.659412	+ 25691.779465
		倍面積	= 363.120053	
		面積	= 181.560026	

17 LOT

点 名	X	Y	(X-X0)*(YN-1-Y0)	(XN-1-X0)*(Y-Y0)
X0·Y0	- 150800.000	- 39100.000		
46-34	- 150837.226	- 39208.303		
46-35	- 150830.466	- 39208.998	+ 3299.559198	+ 4057.559548
46-49	- 150829.032	- 39194.902	+ 3164.429936	+ 2891.284332
46-50	- 150835.833	- 39194.655	+ 3400.623366	+ 2748.023960
46-34	- 150837.226	- 39208.303	+ 3523.627030	+ 3880.821399
			+ 13388.239530	+ 13577.689239
		倍面積	= 189.449709	
		面積	= 94.724854	

18 LOT

点 名	X	Y	(X-X0)*(YN-1-Y0)	(XN-1-X0)*(Y-Y0)
X0·Y0	- 150800.000	- 39100.000		
46-35	- 150830.466	- 39208.998		
46-36	- 150823.083	- 39209.757	+ 2516.000834	+ 3343.856762
46-48	- 150822.539	- 39195.138	+ 2473.813023	+ 2196.070454
46-49	- 150829.032	- 39194.902	+ 2762.046416	+ 2138.996178
46-35	- 150830.466	- 39208.998	+ 2891.284332	+ 3164.429936
			+ 10643.144605	+ 10843.353330
		倍面積	= 200.208725	
		面積	= 100.104362	

19 LOT

点 名	X	Y	(X-X0)*(YN-1-Y0)	(XN-1-X0)*(Y-Y0)
X0·Y0	- 150800.000	- 39100.000		
46-36	- 150823.083	- 39209.757		
46-37	- 150820.842	- 39209.987	+ 2287.555394	+ 2538.829921

\* \* \* \* \* 各 筆 面 積 計 算 書 \* \* \* \* \*

点 名	X	Y	(X-X0)*(YN-1-Y0)	(XN-1-X0)*(Y-Y0)
46-47	- 150820.290	- 39195.220	+ 2231.636230	+ 1984.575240
46-48	- 150822.539	- 39195.138	+ 2146.163580	+ 1930.350020
46-36	- 150823.083	- 39209.757	+ 2196.070454	+ 2473.813023
			+ 8861.425658	+ 8927.568204
		倍面積	= 66.142546	
		面積	= 33.071273	

20 LOT

点 名	X	Y	(X-X0)*(YN-1-Y0)	(XN-1-X0)*(Y-Y0)
X0·Y0	- 150700.000	- 39100.000		
46-37	- 150820.842	- 39209.987		
46-38	- 150785.593	- 39213.609	+ 9414.117291	+ 13728.738778
46-44	- 150784.880	- 39196.503	+ 9643.131920	+ 8259.981279
46-46	- 150807.802	- 39195.701	+ 10403.216406	+ 8123.100880
46-47	- 150820.290	- 39195.220	+ 11511.873290	+ 10264.906440
46-37	- 150820.842	- 39209.987	+ 11506.575240	+ 13230.336230
			+ 52478.914147	+ 53607.063607
		倍面積	= 1128.149460	
		面積	= 564.074730	

21 LOT

点 名	X	Y	(X-X0)*(YN-1-Y0)	(XN-1-X0)*(Y-Y0)
X0·Y0	- 150700.000	- 39100.000		
46-8	- 150750.694	- 39217.004		
46-41	- 150749.442	- 39217.107	+ 5784.911768	+ 5936.622258
46-42	- 150748.657	- 39197.535	+ 5698.075299	+ 4822.325470
46-43	- 150749.911	- 39197.483	+ 4868.069385	+ 4743.230331
46-8	- 150750.694	- 39217.004	+ 4941.803202	+ 5839.786644
			+ 21292.859654	+ 21341.964703
		倍面積	= 49.105049	
		面積	= 24.552524	

22 LOT

点 名	X	Y	(X-X0)*(YN-1-Y0)	(XN-1-X0)*(Y-Y0)
X0·Y0	- 150700.000	- 39100.000		
46-10	- 150731.593	- 39218.521		
46-11	- 150730.076	- 39217.213	+ 3564.637596	+ 3703.110309
46-18	- 150728.885	- 39198.355	+ 3385.697505	+ 2958.124980
46-42	- 150748.657	- 39197.535	+ 4785.659235	+ 2817.298475
46-41	- 150749.442	- 39217.107	+ 4822.325470	+ 5698.075299
46-9	- 150739.856	- 39217.896	+ 4667.416592	+ 5829.014032
46-10	- 150731.593	- 39218.521	+ 3724.688328	+ 4723.772976

\* \* \* \* \* 各 筆 面 積 計 算 書 \* \* \* \* \*

点 名	X	Y	(X-X0)*(YN-1-Y0)	(XN-1-X0)*(Y-Y0)
			+ 24950.424726	+ 25729.396071
		倍面積	= 778.971345	
		面積	= 389.485672	

1 スミキリ

点 名	X	Y	(X-X0)*(YN-1-Y0)	(XN-1-X0)*(Y-Y0)
X0・Y0	- 150700.000	- 39200.000		
46-1	- 150730.165	- 39218.629		
46-10	- 150731.593	- 39218.521	+ 588.545997	+ 558.685965
46-11	- 150730.076	- 39217.213	+ 557.037596	+ 543.810309
46-1	- 150730.165	- 39218.629	+ 519.230145	+ 560.285804
			+ 1664.813738	+ 1662.782078
		倍面積	= 2.031660	
		面積	= 1.015830	

2 スミキリ

点 名	X	Y	(X-X0)*(YN-1-Y0)	(XN-1-X0)*(Y-Y0)
X0・Y0	- 150700.000	- 39100.000		
46-2	- 150727.688	- 39179.383		
46-12	- 150727.820	- 39181.478	+ 2208.435060	+ 2255.962864
46-13	- 150729.761	- 39179.298	+ 2424.866758	+ 2206.070360
46-2	- 150727.688	- 39179.383	+ 2195.603024	+ 2362.517463
			+ 6828.904842	+ 6824.550687
		倍面積	= 4.354155	
		面積	= 2.177077	

3 スミキリ

点 名	X	Y	(X-X0)*(YN-1-Y0)	(XN-1-X0)*(Y-Y0)
X0・Y0	- 150800.000	- 39100.000		
46-3	- 150883.679	- 39172.978		
46-14	- 150881.616	- 39173.063	+ 5956.172448	+ 6113.838777
46-15	- 150883.859	- 39175.040	+ 6126.990117	+ 6124.464640
46-3	- 150883.679	- 39172.978	+ 6279.272160	+ 6119.862102
			+ 18362.434725	+ 18358.165519
		倍面積	= 4.269206	
		面積	= 2.134603	

4 スミキリ

点 名	X	Y	(X-X0)*(YN-1-Y0)	(XN-1-X0)*(Y-Y0)
X0・Y0	- 150800.000	- 39200.000		
46-4	- 150886.321	- 39203.258		
46-16	- 150886.201	- 39201.886	+ 280.842858	+ 162.801406

\* \* \* \* \* 各 筆 面 積 計 算 書 \* \* \* \* \*

点 名	X	Y	(X-X0)*(YN-1-Y0)	(XN-1-X0)*(Y-Y0)
46-17	- 150884.939	- 39203.400	+ 160.194954	+ 293.083400
46-4	- 150886.321	- 39203.258	+ 293.491400	+ 276.731262
			+ 734.529212	+ 732.616068
		倍面積 =	1.913144	
		面積 =	0.956572	