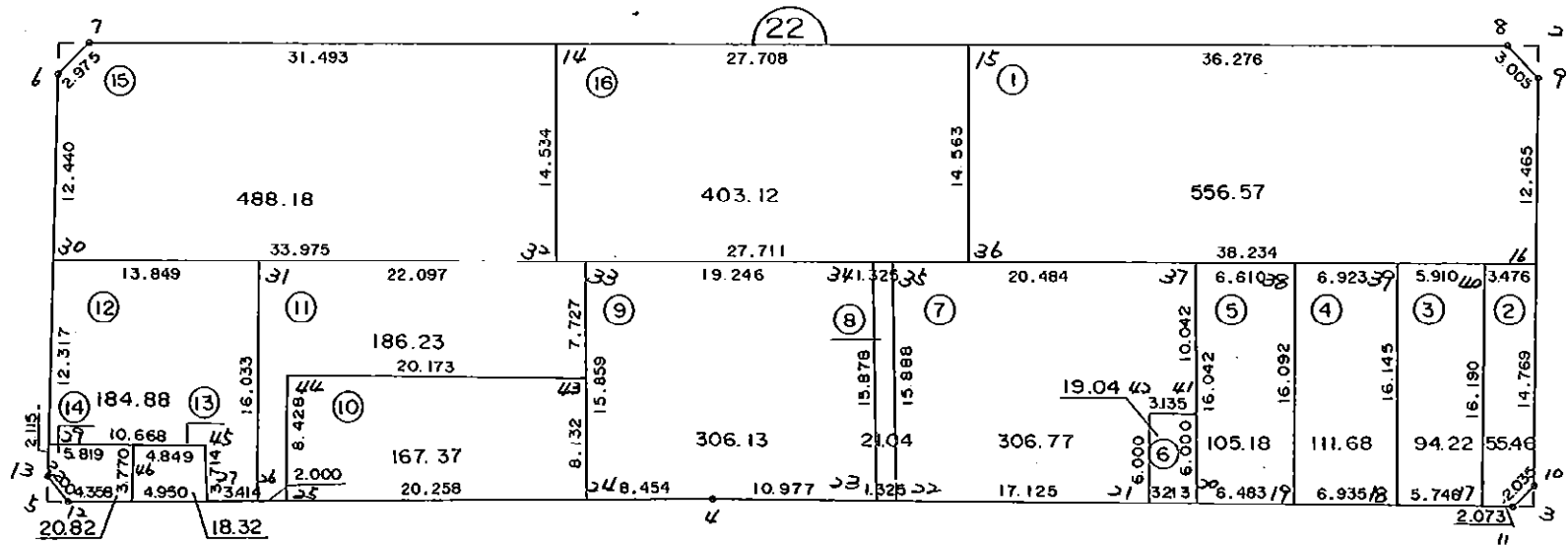


2 2 B L O C K



* * * 各筆面積 集計表 * * *

街区名・筆名	各筆面積	隅切面積
22 BLOCK	3045.14	
1 LOT	556.57	
2 LOT	55.46	
3 LOT	94.22	
4 LOT	111.68	
5 LOT	105.18	
6 LOT	19.04	
7 LOT	306.77	
8 LOT	21.04	
9 LOT	306.13	
10 LOT	167.37	
11 LOT	186.23	
12 LOT	184.88	
13 LOT	18.32	
14 LOT	20.82	
15 LOT	488.18	
16 LOT	403.12	
1 スミリ		2.15
2 スミリ		2.28
3 スミリ		1.03
5 スミリ		1.23
合計 =	3045.01	6.69

* * * * * 各 筆 面 積 計 算 書 * * * * *

22 BLOCK

点 名	X	Y	(X-X0)*(YN-1-Y0)	(XN-1-X0)*(Y-Y0)
X0·Y0	- 150800.000	- 38700.000		
22-6	- 150832.980	- 38895.739		
22-7	- 150830.702	- 38893.825	+ 6009.578778	+ 6392.348500
22-8	- 150820.651	- 38798.878	+ 4002.680075	+ 3035.752356
22-9	- 150822.556	- 38796.554	+ 2230.292168	+ 1993.936654
22-10	- 150849.669	- 38793.998	+ 4795.740626	+ 2120.218888
22-11	- 150851.249	- 38795.280	+ 4817.303502	+ 4732.462320
22-4	- 150856.454	- 38848.905	+ 5378.937120	+ 7631.232345
22-12	- 150861.320	- 38892.065	+ 9130.854600	+ 10842.837510
22-13	- 150859.768	- 38893.624	+ 11479.340920	+ 11873.023680
22-6	- 150832.980	- 38895.739	+ 6385.719520	+ 11698.928552
			+ 54230.447309	+ 60320.740805
		倍面積	= 6090.293496	
		面積	= 3045.146748	

1 LOT

点 名	X	Y	(X-X0)*(YN-1-Y0)	(XN-1-X0)*(Y-Y0)
X0·Y0	- 150800.000	- 38700.000		
22-15	- 150824.470	- 38834.952		
22-8	- 150820.651	- 38798.878	+ 2786.893752	+ 2419.544660
22-9	- 150822.556	- 38796.554	+ 2230.292168	+ 1993.936654
22-16	- 150834.966	- 38795.384	+ 3376.107164	+ 2151.481504
22-36	- 150838.951	- 38833.410	+ 3715.302184	+ 4664.814060
22-15	- 150824.470	- 38834.952	+ 3264.542700	+ 5256.515352
			+ 15373.137968	+ 16486.292230
		倍面積	= 1113.154262	
		面積	= 556.577131	

2 LOT

点 名	X	Y	(X-X0)*(YN-1-Y0)	(XN-1-X0)*(Y-Y0)
X0·Y0	- 150800.000	- 38700.000		
22-16	- 150834.966	- 38795.384		
22-10	- 150849.669	- 38793.998	+ 4737.627896	+ 3286.734068
22-11	- 150851.249	- 38795.280	+ 4817.303502	+ 4732.462320
22-17	- 150851.449	- 38797.343	+ 4902.060720	+ 4988.731407
22-40	- 150835.328	- 38798.841	+ 3438.933504	+ 5085.270609
22-16	- 150834.966	- 38795.384	+ 3456.074406	+ 3369.725952
			+ 21352.000028	+ 21462.924356
		倍面積	= 110.924328	
		面積	= 55.462164	

* * * * * 各 筆 面 積 計 算 書 * * * * *

3 LOT

点 名	X	Y	(X-X0)*(YN-1-Y0)	(XN-1-X0)*(Y-Y0)
X0·Y0	- 150800.000	- 38700.000		
22-17	- 150851.449	- 38797.343		
22-18	- 150852.004	- 38803.062	+ 5062.225372	+ 5302.436838
22-39	- 150835.944	- 38804.719	+ 3704.460528	+ 5445.806876
22-40	- 150835.328	- 38798.841	+ 3699.512832	+ 3552.740904
22-17	- 150851.449	- 38797.343	+ 5085.270609	+ 3438.933504
			+ 17551.469341	+ 17739.918122
		倍面積	= 188.448781	
		面積	= 94.224390	

4 LOT

点 名	X	Y	(X-X0)*(YN-1-Y0)	(XN-1-X0)*(Y-Y0)
X0·Y0	- 150800.000	- 38800.000		
22-18	- 150852.004	- 38803.062		
22-19	- 150852.674	- 38809.965	+ 161.287788	+ 518.219860
22-38	- 150836.666	- 38811.604	+ 365.376690	+ 611.229096
22-39	- 150835.944	- 38804.719	+ 417.094176	+ 173.026854
22-18	- 150852.004	- 38803.062	+ 245.406876	+ 110.060528
			+ 1189.165530	+ 1412.536338
		倍面積	= 223.370808	
		面積	= 111.685404	

5 LOT

点 名	X	Y	(X-X0)*(YN-1-Y0)	(XN-1-X0)*(Y-Y0)
X0·Y0	- 150800.000	- 38800.000		
22-19	- 150852.674	- 38809.965		
22-20	- 150853.300	- 38816.418	+ 531.134500	+ 864.801732
22-37	- 150837.355	- 38818.178	+ 613.294390	+ 968.887400
22-38	- 150836.666	- 38811.604	+ 666.514548	+ 433.467420
22-19	- 150852.674	- 38809.965	+ 611.229096	+ 365.376690
			+ 2422.172534	+ 2632.533242
		倍面積	= 210.360708	
		面積	= 105.180354	

6 LOT

点 名	X	Y	(X-X0)*(YN-1-Y0)	(XN-1-X0)*(Y-Y0)
X0·Y0	- 150800.000	- 38800.000		
22-20	- 150853.300	- 38816.418		
22-21	- 150853.610	- 38819.616	+ 880.168980	+ 1045.532800
22-42	- 150847.638	- 38820.196	+ 934.467008	+ 1082.707560

* * * * * 各 筆 面 積 計 算 書 * * * * *

点 名	X	Y	(X-X0)*(YN-1-Y0)	(XN-1-X0)*(Y-Y0)
22-41	- 150847.336	- 38817.076	+ 955.997856	+ 813.466488
22-20	- 150853.300	- 38816.418	+ 910.150800	+ 777.162448
			+ 3680.784644	+ 3718.869296
		倍面積	= 38.084652	
		面積	= 19.042326	

7 LOT

点 名	X	Y	(X-X0)*(YN-1-Y0)	(XN-1-X0)*(Y-Y0)
X0-Y0	- 150800.000	- 38800.000		
22-21	- 150853.610	- 38819.616		
22-22	- 150855.265	- 38836.660	+ 1084.078240	+ 1965.342600
22-35	- 150839.490	- 38838.551	+ 1447.703400	+ 2130.521015
22-37	- 150837.355	- 38818.178	+ 1440.072605	+ 717.849220
22-41	- 150847.336	- 38817.076	+ 860.473808	+ 637.873980
22-42	- 150847.638	- 38820.196	+ 813.466488	+ 955.997856
22-21	- 150853.610	- 38819.616	+ 1082.707560	+ 934.467008
			+ 6728.502101	+ 7342.051679
		倍面積	= 613.549578	
		面積	= 306.774789	

8 LOT

点 名	X	Y	(X-X0)*(YN-1-Y0)	(XN-1-X0)*(Y-Y0)
X0-Y0	- 150800.000	- 38800.000		
22-22	- 150855.265	- 38836.660		
22-23	- 150855.393	- 38837.979	+ 2030.707380	+ 2098.909435
22-34	- 150839.628	- 38839.869	+ 1505.031812	+ 2208.463517
22-35	- 150839.490	- 38838.551	+ 1574.426810	+ 1527.699028
22-22	- 150855.265	- 38836.660	+ 2130.521015	+ 1447.703400
			+ 7240.687017	+ 7282.775380
		倍面積	= 42.088363	
		面積	= 21.044181	

9 LOT

点 名	X	Y	(X-X0)*(YN-1-Y0)	(XN-1-X0)*(Y-Y0)
X0-Y0	- 150800.000	- 38800.000		
22-23	- 150855.393	- 38837.979		
22-4	- 150856.454	- 38848.905	+ 2144.066466	+ 2708.994665
22-24	- 150857.401	- 38857.306	+ 2807.195905	+ 3235.152924
22-33	- 150841.634	- 38859.010	+ 2385.878004	+ 3387.233010
22-34	- 150839.628	- 38839.869	+ 2338.448280	+ 1659.905946
22-23	- 150855.393	- 38837.979	+ 2208.463517	+ 1505.031812
			+ 11884.052172	+ 12496.318357
		倍面積	= 612.266185	
		面積	= 306.133092	

* * * * * 各 筆 面 積 計 算 書 * * * * *

10 LOT

点 名	X	Y	(X-X0)*(YN-1-Y0)	(XN-1-X0)*(Y-Y0)
X0-Y0	- 150800.000	- 38800.000		
22-24	- 150857.401	- 38857.306		
22-25	- 150859.670	- 38877.435	+ 3419.449020	+ 4444.846435
22-44	- 150851.282	- 38878.257	+ 3971.021670	+ 4669.595190
22-43	- 150849.316	- 38858.180	+ 3859.322212	+ 2983.586760
22-24	- 150857.401	- 38857.306	+ 3339.590180	+ 2826.102696
			+ 14589.383082	+ 14924.131081
		倍面積	= 334.747999	
		面積	= 167.373999	

11 LOT

点 名	X	Y	(X-X0)*(YN-1-Y0)	(XN-1-X0)*(Y-Y0)
X0-Y0	- 150800.000	- 38800.000		
22-25	- 150859.670	- 38877.435		
22-26	- 150859.894	- 38879.422	+ 4637.891890	+ 4739.110740
22-31	- 150843.937	- 38880.986	+ 3489.564414	+ 4850.575484
22-33	- 150841.634	- 38859.010	+ 3371.771124	+ 2592.722370
22-43	- 150849.316	- 38858.180	+ 2910.137160	+ 2422.266120
22-44	- 150851.282	- 38878.257	+ 2983.586760	+ 3859.322212
22-25	- 150859.670	- 38877.435	+ 4669.595190	+ 3971.021670
			+ 22062.546538	+ 22435.018596
		倍面積	= 372.472058	
		面積	= 186.236029	

12 LOT

点 名	X	Y	(X-X0)*(YN-1-Y0)	(XN-1-X0)*(Y-Y0)
X0-Y0	- 150800.000	- 38800.000		
22-26	- 150859.894	- 38879.422		
22-27	- 150860.277	- 38882.815	+ 4787.319894	+ 4960.121610
22-45	- 150856.581	- 38883.177	+ 4685.755515	+ 5013.660029
22-29	- 150857.660	- 38893.790	+ 4795.985820	+ 5306.731990
22-30	- 150845.381	- 38894.760	+ 4256.283990	+ 5463.861600
22-31	- 150843.937	- 38880.986	+ 4163.470120	+ 3675.225666
22-26	- 150859.894	- 38879.422	+ 4850.575484	+ 3489.564414
			+ 27539.390823	+ 27909.165309
		倍面積	= 369.774486	
		面積	= 184.887243	

13 LOT

点 名	X	Y	(X-X0)*(YN-1-Y0)	(XN-1-X0)*(Y-Y0)
X0-Y0	- 150800.000	- 38800.000		
22-27	- 150860.277	- 38882.815		
22-28	- 150860.832	- 38887.734	+ 5037.802080	+ 5288.342318

* * * * * 各 筆 面 積 計 算 書 * * * * *

点 名	X	Y	(X-X0)*(YN-1-Y0)	(XN-1-X0)*(Y-Y0)
22-46	- 150857.071	- 38888.001	+ 5007.067114	+ 5353.276832
22-45	- 150856.581	- 38883.177	+ 4979.184581	+ 4746.994567
22-27	- 150860.277	- 38882.815	+ 5013.660029	+ 4685.755515
			+ 20037.713804	+ 20074.369232
		倍面積	= 36.655428	
		面積	= 18.327714	

14 LOT

点 名	X	Y	(X-X0)*(YN-1-Y0)	(XN-1-X0)*(Y-Y0)
X0-Y0	- 150800.000	- 38800.000		
22-28	- 150860.832	- 38887.734		
22-12	- 150861.320	- 38892.065	+ 5379.848880	+ 5600.498080
22-13	- 150859.768	- 38893.624	+ 5502.540920	+ 5741.023680
22-29	- 150857.660	- 38893.790	+ 5398.359840	+ 5605.640720
22-46	- 150857.071	- 38888.001	+ 5352.689090	+ 5074.137660
22-28	- 150860.832	- 38887.734	+ 5353.276832	+ 5007.067114
			+ 26986.715562	+ 27028.367254
		倍面積	= 41.651692	
		面積	= 20.825846	

15 LOT

点 名	X	Y	(X-X0)*(YN-1-Y0)	(XN-1-X0)*(Y-Y0)
X0-Y0	- 150800.000	- 38800.000		
22-30	- 150845.381	- 38894.760		
22-6	- 150832.980	- 38895.739	+ 3125.184800	+ 4344.731559
22-7	- 150830.702	- 38893.825	+ 2939.378778	+ 3094.348500
22-14	- 150827.387	- 38862.507	+ 2569.585275	+ 1919.089914
22-32	- 150841.839	- 38860.970	+ 2615.230373	+ 1669.785390
22-30	- 150845.381	- 38894.760	+ 2766.879570	+ 3964.663640
			+ 14016.258796	+ 14992.619003
		倍面積	= 976.360207	
		面積	= 488.180103	

16 LOT

点 名	X	Y	(X-X0)*(YN-1-Y0)	(XN-1-X0)*(Y-Y0)
X0-Y0	- 150800.000	- 38800.000		
22-14	- 150827.387	- 38862.507		
22-15	- 150824.470	- 38834.952	+ 1529.546290	+ 957.230424
22-36	- 150838.951	- 38833.410	+ 1361.415352	+ 817.542700
22-32	- 150841.839	- 38860.970	+ 1397.840990	+ 2374.842470
22-14	- 150827.387	- 38862.507	+ 1669.785390	+ 2615.230373
			+ 5958.588022	+ 6764.845967
		倍面積	= 806.257945	
		面積	= 403.128972	

* * * * * 各 筆 面 積 計 算 書 * * * * *

1 区画

点 名	X	Y	(X-X0)*(YN-1-Y0)	(XN-1-X0)*(Y-Y0)
X0-Y0	- 150800.000	- 38800.000		
22-1	- 150830.922	- 38895.901		
22-6	- 150832.980	- 38895.739	+ 3162.814980	+ 2960.441358
22-7	- 150830.702	- 38893.825	+ 2939.378778	+ 3094.348500
22-1	- 150830.922	- 38895.901	+ 2901.256650	+ 2944.352502
			+ 9003.450408	+ 8999.142360
		倍面積	= 4.308048	
		面積	= 2.154024	

2 区画

点 名	X	Y	(X-X0)*(YN-1-Y0)	(XN-1-X0)*(Y-Y0)
X0-Y0	- 150800.000	- 38700.000		
22-2	- 150820.426	- 38796.755		
22-8	- 150820.651	- 38798.878	+ 1998.087505	+ 2019.682028
22-9	- 150822.556	- 38796.554	+ 2230.292168	+ 1993.936654
22-2	- 150820.426	- 38796.755	+ 1972.212004	+ 2182.405780
			+ 6200.591677	+ 6196.024462
		倍面積	= 4.567215	
		面積	= 2.283607	

3 区画

点 名	X	Y	(X-X0)*(YN-1-Y0)	(XN-1-X0)*(Y-Y0)
X0-Y0	- 150800.000	- 38700.000		
22-3	- 150851.111	- 38793.862		
22-10	- 150849.669	- 38793.998	+ 4662.031678	+ 4804.331778
22-11	- 150851.249	- 38795.280	+ 4817.303502	+ 4732.462320
22-3	- 150851.111	- 38793.862	+ 4869.856080	+ 4810.333638
			+ 14349.191260	+ 14347.127736
		倍面積	= 2.063524	
		面積	= 1.031762	

5 区画

点 名	X	Y	(X-X0)*(YN-1-Y0)	(XN-1-X0)*(Y-Y0)
X0-Y0	- 150800.000	- 38800.000		
22-5	- 150861.481	- 38893.489		
22-12	- 150861.320	- 38892.065	+ 5732.745480	+ 5660.248265
22-13	- 150859.768	- 38893.624	+ 5502.540920	+ 5741.023680
22-5	- 150861.481	- 38893.489	+ 5756.097144	+ 5587.650552
			+ 16991.383544	+ 16988.922497
		倍面積	= 2.461047	
		面積	= 1.230523	