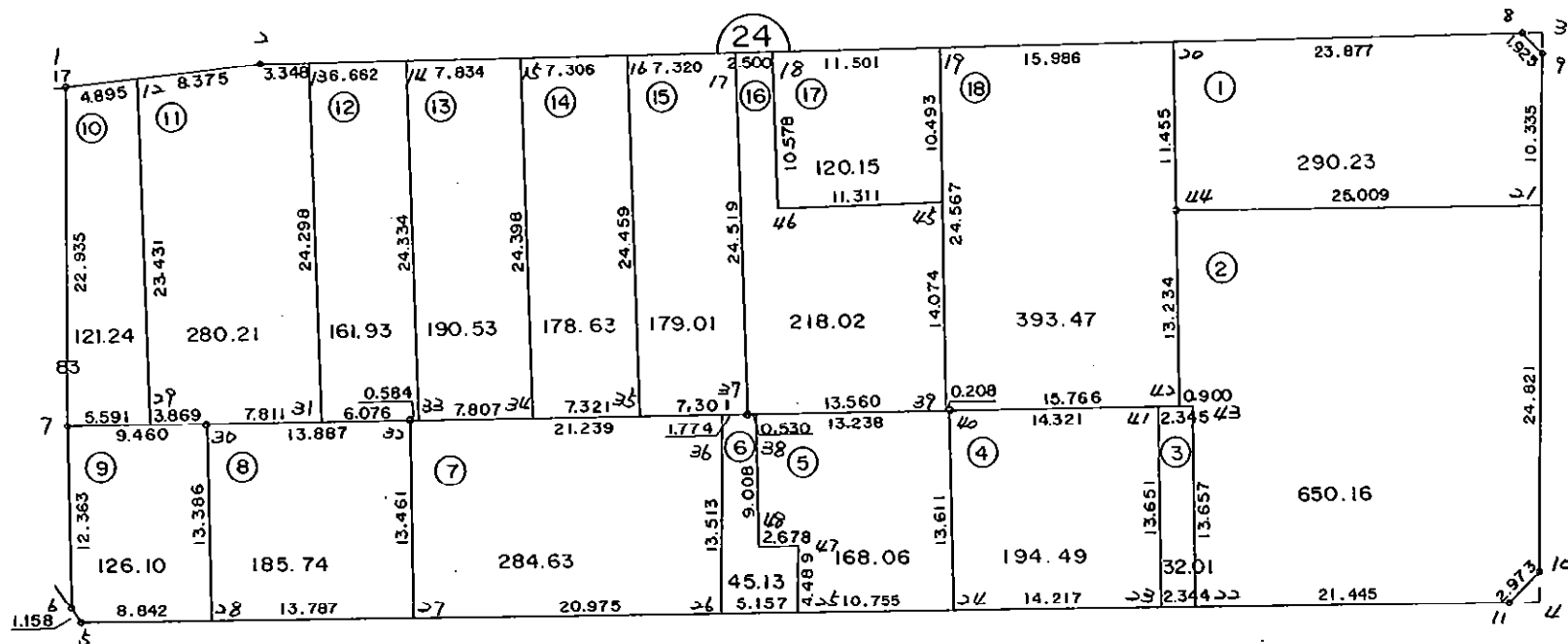


2 4 B L O C K



\* \* \* 各筆面積 集計表 \* \* \*

街区名・筆名	各筆面積	隅切面積
24 BLOCK	3819.81	
1 LOT	290.23	
2 LOT	650.16	
3 LOT	32.01	
4 LOT	194.49	
5 LOT	168.06	
6 LOT	45.13	
7 LOT	284.63	
8 LOT	185.74	
9 LOT	126.10	
10 LOT	121.24	
11 LOT	280.21	
12 LOT	161.93	
13 LOT	190.53	
14 LOT	178.63	
15 LOT	179.01	
16 LOT	218.02	
17 LOT	120.15	
18 LOT	393.47	
3 スミナリ		0.95
4 スミナリ		2.16
合計 =	3819.74	3.11

\* \* \* \* \* 各 筆 面 積 計 算 書 \* \* \* \* \*

24 BLOCK

点 名	X	Y	(X-X0)*(YN-1-Y0)	(XN-1-X0)*(Y-Y0)
X0·Y0	- 150800.000	- 38600.000		
24-1	- 150883.536	- 38788.281		
24-2	- 150880.919	- 38775.272	+ 15235.510239	+ 14641.521792
24-8	- 150872.109	- 38689.389	+ 12638.688648	+ 7233.268491
24-9	- 150873.350	- 38687.918	+ 6556.683150	+ 6339.679062
24-10	- 150908.419	- 38685.459	+ 9531.981642	+ 6268.417650
24-11	- 150910.684	- 38687.385	+ 9458.943956	+ 9474.194315
24-5	- 150919.611	- 38784.498	+ 10452.207235	+ 20420.976632
24-6	- 150918.699	- 38785.211	+ 21899.728102	+ 22153.272921
24-7	- 150906.396	- 38786.429	+ 19705.709556	+ 22128.935871
24-1	- 150883.536	- 38788.281	+ 15573.532944	+ 20032.345276
			+121052.985472	+128692.612010
		倍面積	= 7639.626538	
		面積	= 3819.813269	

1 LOT

点 名	X	Y	(X-X0)*(YN-1-Y0)	(XN-1-X0)*(Y-Y0)
X0·Y0	- 150800.000	- 38600.000		
24-20	- 150874.546	- 38713.141		
24-8	- 150872.109	- 38689.389	+ 8158.484369	+ 6663.592394
24-9	- 150873.350	- 38687.918	+ 6556.683150	+ 6339.679062
24-21	- 150883.660	- 38687.195	+ 7355.219880	+ 6395.753250
24-44	- 150885.954	- 38712.099	+ 7494.759030	+ 9378.202340
24-20	- 150874.546	- 38713.141	+ 8356.532054	+ 9724.921514
			+ 37921.678483	+ 38502.148560
		倍面積	= 580.470077	
		面積	= 290.235038	

2 LOT

点 名	X	Y	(X-X0)*(YN-1-Y0)	(XN-1-X0)*(Y-Y0)
X0·Y0	- 150800.000	- 38600.000		
24-21	- 150883.660	- 38687.195		
24-10	- 150908.419	- 38685.459	+ 9453.594705	+ 7149.499940
24-11	- 150910.684	- 38687.385	+ 9458.943956	+ 9474.194315
24-22	- 150912.647	- 38708.740	+ 9843.658095	+ 12035.778160
24-43	- 150899.047	- 38709.987	+ 10770.370780	+ 12389.705589
24-42	- 150899.132	- 38710.883	+ 10903.231284	+ 10982.628501
24-44	- 150885.954	- 38712.099	+ 9530.837382	+ 11112.598068
24-21	- 150883.660	- 38687.195	+ 9378.202340	+ 7494.759030
			+ 69338.838542	+ 70639.163603
		倍面積	= 1300.325061	
		面積	= 650.162530	

\* \* \* \* \* 各 筆 面 積 計 算 書 \* \* \* \* \*

3 LOT

点 名	X	Y	(X-X0)*(YN-1-Y0)	(XN-1-X0)*(Y-Y0)
X0·Y0	- 150800.000	- 38700.000		
24-22	- 150912.647	- 38708.740		
24-23	- 150912.862	- 38711.074	+ 986.413880	+ 1247.452878
24-41	- 150899.268	- 38712.322	+ 1099.293832	+ 1390.685564
24-43	- 150899.047	- 38709.987	+ 1220.457134	+ 991.389516
24-22	- 150912.647	- 38708.740	+ 1125.005589	+ 865.670780
			+ 4431.170435	+ 4495.198738
		倍面積	= 64.028303	
		面積	= 32.014151	

4 LOT

点 名	X	Y	(X-X0)*(YN-1-Y0)	(XN-1-X0)*(Y-Y0)
X0·Y0	- 150800.000	- 38700.000		
24-23	- 150912.862	- 38711.074		
24-24	- 150914.163	- 38725.231	+ 1264.241062	+ 2847.621122
24-40	- 150900.619	- 38726.579	+ 2538.717989	+ 3034.338377
24-41	- 150899.268	- 38712.322	+ 2638.444172	+ 1239.827318
24-23	- 150912.862	- 38711.074	+ 1390.685564	+ 1099.293832
			+ 7832.088787	+ 8221.080649
		倍面積	= 388.991862	
		面積	= 194.495931	

5 LOT

点 名	X	Y	(X-X0)*(YN-1-Y0)	(XN-1-X0)*(Y-Y0)
X0·Y0	- 150900.000	- 38700.000		
24-24	- 150914.163	- 38725.231		
24-25	- 150915.148	- 38735.942	+ 382.199188	+ 509.046546
24-47	- 150910.667	- 38736.206	+ 383.393314	+ 548.448488
24-48	- 150910.889	- 38738.875	+ 394.247134	+ 414.679625
24-38	- 150901.924	- 38739.753	+ 74.795500	+ 432.870417
24-40	- 150900.619	- 38726.579	+ 24.607107	+ 51.137996
24-24	- 150914.163	- 38725.231	+ 376.438377	+ 15.617989
			+ 1635.680620	+ 1971.801061
		倍面積	= 336.120441	
		面積	= 168.060220	

6 LOT

点 名	X	Y	(X-X0)*(YN-1-Y0)	(XN-1-X0)*(Y-Y0)
X0·Y0	- 150900.000	- 38700.000		
24-25	- 150915.148	- 38735.942		
24-26	- 150915.620	- 38741.077	+ 561.414040	+ 622.234396

\* \* \* \* \* 各 筆 面 積 計 算 書 \* \* \* \* \*

点 名	X	Y	(X-X0)*(YN-1-Y0)	(XN-1-X0)*(Y-Y0)
24-36	- 150902.142	- 38742.046	+ 87.986934	+ 656.758520
24-37	- 150901.976	- 38740.280	+ 83.082896	+ 86.279760
24-38	- 150901.924	- 38739.753	+ 77.498720	+ 78.551928
24-48	- 150910.889	- 38738.875	+ 432.870417	+ 74.795500
24-47	- 150910.667	- 38736.206	+ 414.679625	+ 394.247134
24-25	- 150915.148	- 38735.942	+ 548.448488	+ 383.393314
			+ 2205.981120	+ 2296.260552
		倍面積	= 90.279432	
		面積	= 45.139716	

7 LOT

点 名	X	Y	(X-X0)*(YN-1-Y0)	(XN-1-X0)*(Y-Y0)
X0·Y0	- 150900.000	- 38700.000		
24-26	- 150915.620	- 38741.077		
24-27	- 150917.540	- 38761.964	+ 720.490580	+ 967.877680
24-32	- 150904.135	- 38763.191	+ 256.221140	+ 1108.370140
24-36	- 150902.142	- 38742.046	+ 135.355122	+ 173.860210
24-26	- 150915.620	- 38741.077	+ 656.758520	+ 87.986934
			+ 1768.825362	+ 2338.094964
		倍面積	= 569.269602	
		面積	= 284.634801	

8 LOT

点 名	X	Y	(X-X0)*(YN-1-Y0)	(XN-1-X0)*(Y-Y0)
X0·Y0	- 150900.000	- 38700.000		
24-27	- 150917.540	- 38761.964		
24-28	- 150918.802	- 38775.693	+ 1165.047128	+ 1327.655220
24-30	- 150905.481	- 38777.013	+ 414.873333	+ 1447.998426
24-32	- 150904.135	- 38763.191	+ 318.448755	+ 346.349871
24-27	- 150917.540	- 38761.964	+ 1108.370140	+ 256.221140
			+ 3006.739356	+ 3378.224657
		倍面積	= 371.485301	
		面積	= 185.742650	

9 LOT

点 名	X	Y	(X-X0)*(YN-1-Y0)	(XN-1-X0)*(Y-Y0)
X0·Y0	- 150900.000	- 38700.000		
24-28	- 150918.802	- 38775.693		
24-5	- 150919.611	- 38784.498	+ 1484.415423	+ 1588.731396
24-6	- 150918.699	- 38785.211	+ 1580.028102	+ 1671.072921
24-7	- 150906.396	- 38786.429	+ 545.009556	+ 1616.135871
24-30	- 150905.481	- 38777.013	+ 473.717349	+ 492.575148

\* \* \* \* \* 各 筆 面 積 計 算 書 \* \* \* \* \*

点 名	X	Y	(X-X0)*(YN-1-Y0)	(XN-1-X0)*(Y-Y0)
24-28	- 150918.802	- 38775.693	+ 1447.998426	+ 414.873333
			+ 5531.168856	+ 5783.388669
		倍面積	= 252.219813	
		面積	= 126.109906	

10 LOT

点 名	X	Y	(X-X0)*(YN-1-Y0)	(XN-1-X0)*(Y-Y0)
X0·Y0	- 150800.000	- 38700.000		
24-7	- 150906.396	- 38786.429		
24-1	- 150883.536	- 38788.281	+ 7219.932944	+ 9392.745276
24-12	- 150882.571	- 38783.482	+ 7289.450451	+ 6973.752352
24-29	- 150905.855	- 38780.864	+ 8836.987110	+ 6677.021344
24-7	- 150906.396	- 38786.429	+ 8603.606144	+ 9148.941795
			+ 31949.976649	+ 32192.460767
		倍面積	= 242.484118	
		面積	= 121.242059	

11 LOT

点 名	X	Y	(X-X0)*(YN-1-Y0)	(XN-1-X0)*(Y-Y0)
X0·Y0	- 150800.000	- 38700.000		
24-12	- 150882.571	- 38783.482		
24-2	- 150880.919	- 38775.272	+ 6755.279958	+ 6215.284312
24-13	- 150880.577	- 38771.941	+ 6065.191944	+ 5821.393779
24-31	- 150904.724	- 38769.238	+ 7533.949284	+ 5578.990326
24-30	- 150905.481	- 38777.013	+ 7303.293478	+ 8065.109412
24-29	- 150905.855	- 38780.864	+ 8152.211115	+ 8529.615584
24-12	- 150882.571	- 38783.482	+ 6677.021344	+ 8836.987110
			+ 42486.947123	+ 43047.380523
		倍面積	= 560.433400	
		面積	= 280.216700	

12 LOT

点 名	X	Y	(X-X0)*(YN-1-Y0)	(XN-1-X0)*(Y-Y0)
X0·Y0	- 150800.000	- 38700.000		
24-13	- 150880.577	- 38771.941		
24-14	- 150879.897	- 38765.314	+ 5747.870077	+ 5262.806178
24-33	- 150904.080	- 38762.610	+ 6797.881120	+ 5002.351170
24-32	- 150904.135	- 38763.191	+ 6519.892350	+ 6576.919280
24-31	- 150904.724	- 38769.238	+ 6617.614284	+ 7210.099130
24-13	- 150880.577	- 38771.941	+ 5578.990326	+ 7533.949284
			+ 31262.248157	+ 31586.125042
		倍面積	= 323.876885	
		面積	= 161.938442	

\* \* \* \* \* 各 筆 面 積 計 算 書 \* \* \* \* \*

13 LOT

点 名	X	Y	(X-X0)*(YN-1-Y0)	(XN-1-X0)*(Y-Y0)
X0·Y0	- 150800.000	- 38700.000		
24-14	- 150879.897	- 38765.314		
24-15	- 150879.098	- 38757.521	+ 5166.206772	+ 4595.755337
24-34	- 150903.348	- 38754.837	+ 5944.680308	+ 4337.497026
24-33	- 150904.080	- 38762.610	+ 5707.434960	+ 6470.618280
24-14	- 150879.897	- 38765.314	+ 5002.351170	+ 6797.881120
			+ 21820.673210	+ 22201.751763
		倍面積	= 381.078553	
		面積	= 190.539276	

14 LOT

点 名	X	Y	(X-X0)*(YN-1-Y0)	(XN-1-X0)*(Y-Y0)
X0·Y0	- 150800.000	- 38700.000		
24-15	- 150879.098	- 38757.521		
24-16	- 150878.352	- 38750.253	+ 4506.885392	+ 3974.911794
24-35	- 150902.661	- 38747.549	+ 5159.023233	+ 3725.559248
24-34	- 150903.348	- 38754.837	+ 4914.094052	+ 5629.621257
24-15	- 150879.098	- 38757.521	+ 4337.497026	+ 5944.680308
			+ 18917.499703	+ 19274.772607
		倍面積	= 357.272904	
		面積	= 178.636452	

15 LOT

点 名	X	Y	(X-X0)*(YN-1-Y0)	(XN-1-X0)*(Y-Y0)
X0·Y0	- 150800.000	- 38700.000		
24-16	- 150878.352	- 38750.253		
24-17	- 150877.605	- 38742.971	+ 3899.884065	+ 3366.863792
24-37	- 150901.976	- 38740.280	+ 4382.010696	+ 3125.929400
24-35	- 150902.661	- 38747.549	+ 4135.185080	+ 4848.856824
24-16	- 150878.352	- 38750.253	+ 3725.559248	+ 5159.023233
			+ 16142.639089	+ 16500.673249
		倍面積	= 358.034160	
		面積	= 179.017080	

16 LOT

点 名	X	Y	(X-X0)*(YN-1-Y0)	(XN-1-X0)*(Y-Y0)
X0·Y0	- 150800.000	- 38700.000		
24-17	- 150877.605	- 38742.971		
24-18	- 150877.350	- 38740.484	+ 3323.806850	+ 3141.760820
24-46	- 150887.864	- 38739.323	+ 3557.086176	+ 3041.634050



\* \* \* \* \* 各 筆 面 積 計 算 書 \* \* \* \* \*

点 名	X	Y	(X-X0)*(YN-1-Y0)	(XN-1-X0)*(Y-Y0)
24-45	- 150886.626	- 38728.080	+ 3406.394198	+ 2467.221120
24-39	- 150900.640	- 38726.786	+ 2825.971200	+ 2320.364036
24-37	- 150901.976	- 38740.280	+ 2731.529136	+ 4053.779200
24-17	- 150877.605	- 38742.971	+ 3125.929400	+ 4382.010696
			+ 18970.716960	+ 19406.769922
		倍面積	= 436.052962	
		面積	= 218.026481	

17 LOT

点 名	X	Y	(X-X0)*(YN-1-Y0)	(XN-1-X0)*(Y-Y0)
X0·Y0	- 150800.000	- 38700.000		
24-18	- 150877.350	- 38740.484		
24-19	- 150876.177	- 38729.044	+ 3083.949668	+ 2246.553400
24-45	- 150886.626	- 38728.080	+ 2515.965544	+ 2139.050160
24-46	- 150887.864	- 38739.323	+ 2467.221120	+ 3406.394198
24-18	- 150877.350	- 38740.484	+ 3041.634050	+ 3557.086176
			+ 11108.770382	+ 11349.083934
		倍面積	= 240.313552	
		面積	= 120.156776	

18 LOT

点 名	X	Y	(X-X0)*(YN-1-Y0)	(XN-1-X0)*(Y-Y0)
X0·Y0	- 150800.000	- 38700.000		
24-19	- 150876.177	- 38729.044		
24-20	- 150874.546	- 38713.141	+ 2165.114024	+ 1001.041957
24-44	- 150885.954	- 38712.099	+ 1129.521514	+ 901.932054
24-42	- 150899.132	- 38710.883	+ 1199.398068	+ 935.437382
24-40	- 150900.619	- 38726.579	+ 1095.036577	+ 2634.829428
24-39	- 150900.640	- 38726.786	+ 2674.910560	+ 2695.180534
24-19	- 150876.177	- 38729.044	+ 2040.477122	+ 2922.988160
			+ 10304.457865	+ 11091.409515
		倍面積	= 786.951650	
		面積	= 393.475825	

3 区切り

点 名	X	Y	(X-X0)*(YN-1-Y0)	(XN-1-X0)*(Y-Y0)
X0·Y0	- 150800.000	- 38600.000		
24-3	- 150871.968	- 38688.015		
24-8	- 150872.109	- 38689.389	+ 6346.673635	+ 6433.147552
24-9	- 150873.350	- 38687.918	+ 6556.683150	+ 6339.679062
24-3	- 150871.968	- 38688.015	+ 6327.282624	+ 6455.900250
			+ 19230.639409	+ 19228.726864
		倍面積	= 1.912545	
		面積	= 0.956272	

\* \* \* \* \* 各 筆 面 積 計 算 書 \* \* \* \* \*

4 スミリ

点 名	X	Y	(X-X0)*(YN-1-Y0)	(XN-1-X0)*(Y-Y0)
X0・Y0	- 150900.000	- 38600.000		
24-4	- 150910.494	- 38685.314		
24-10	- 150908.419	- 38685.459	+ 718.258566	+ 896.806746
24-11	- 150910.684	- 38687.385	+ 913.043956	+ 735.694315
24-4	- 150910.494	- 38685.314	+ 917.018190	+ 911.494776
			+ 2548.320712	+ 2543.995837
		倍面積	= 4.324875	
		面積	= 2.162437	