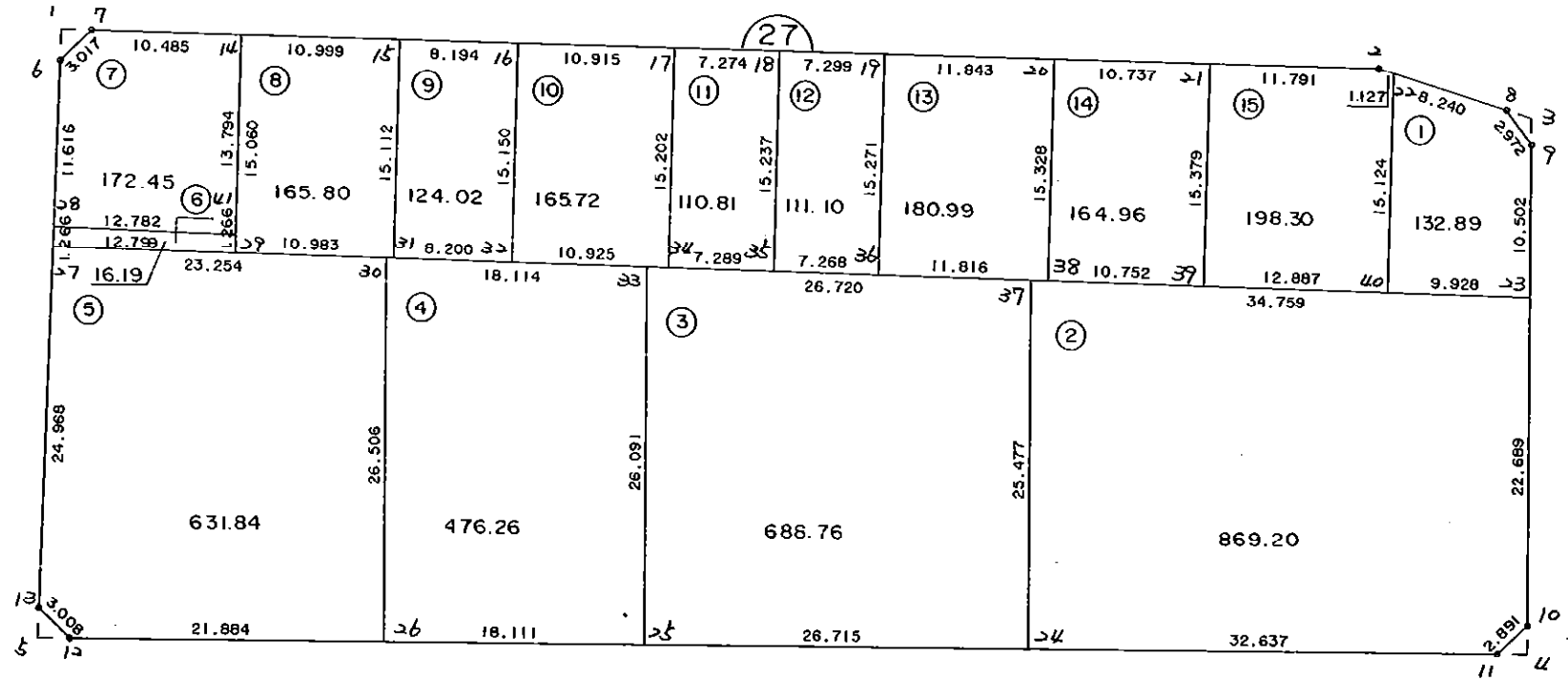


2 7 B L O C K

[



* * * 各筆面積 集計表 * * *

街区名・筆名	各筆面積	隅切面積
27 BLOCK	4209.37	
1 LOT	132.89	
2 LOT	869.20	
3 LOT	688.76	
4 LOT	476.26	
5 LOT	631.84	
6 LOT	16.19	
7 LOT	172.45	
8 LOT	165.80	
9 LOT	124.02	
10 LOT	165.72	
11 LOT	110.81	
12 LOT	111.10	
13 LOT	180.99	
14 LOT	164.96	
15 LOT	198.30	
1 スミリ		2.24
3 スミリ		1.62
4 スミリ		2.08
5 スミリ		2.32
合計 =	4209.29	8.26

* * * * * 各 筆 面 積 計 算 書 * * * * *

27 BLOCK

点 名	X	Y	(X-X0)*(YN-1-Y0)	(XN-1-X0)*(Y-Y0)
X0·Y0	- 150900.000	- 38700.000		
27-6	- 150932.817	- 38887.896		
27-7	- 150930.512	- 38885.950	+ 5733.082752	+ 6102.321150
27-2	- 150922.348	- 38796.786	+ 4155.610600	+ 2953.134432
27-8	- 150924.142	- 38787.592	+ 2336.607612	+ 1957.506016
27-9	- 150926.330	- 38785.580	+ 2306.297360	+ 2066.072360
27-10	- 150959.323	- 38781.957	+ 5076.862340	+ 2157.927810
27-11	- 150961.531	- 38783.823	+ 5042.896167	+ 4972.631829
27-12	- 150972.387	- 38882.575	+ 6067.695501	+ 11234.022325
27-13	- 150970.552	- 38884.958	+ 12881.031400	+ 13388.554746
27-6	- 150932.817	- 38887.896	+ 6069.766686	+ 13256.438592
			+ 49669.850418	+ 58088.609260
		倍面積	= 8418.758842	
		面積	= 4209.379421	

1 LOT

点 名	X	Y	(X-X0)*(YN-1-Y0)	(XN-1-X0)*(Y-Y0)
X0·Y0	- 150900.000	- 38700.000		
27-22	- 150922.564	- 38795.680		
27-8	- 150924.142	- 38787.592	+ 2309.906560	+ 1976.425888
27-9	- 150926.330	- 38785.580	+ 2306.297360	+ 2066.072360
27-23	- 150936.769	- 38784.434	+ 3146.691020	+ 2223.147220
27-40	- 150937.627	- 38794.325	+ 3176.998118	+ 3468.235925
27-22	- 150922.564	- 38795.680	+ 2128.349300	+ 3600.151360
			+ 13068.242358	+ 13334.032753
		倍面積	= 265.790395	
		面積	= 132.895197	

2 LOT

点 名	X	Y	(X-X0)*(YN-1-Y0)	(XN-1-X0)*(Y-Y0)
X0·Y0	- 150900.000	- 38700.000		
27-23	- 150936.769	- 38784.434		
27-10	- 150959.323	- 38781.957	+ 5008.878182	+ 3013.476933
27-11	- 150961.531	- 38783.823	+ 5042.896167	+ 4972.631829
27-24	- 150965.097	- 38816.265	+ 5456.625831	+ 7153.901715
27-37	- 150939.774	- 38819.064	+ 4624.324110	+ 7750.709208
27-23	- 150936.769	- 38784.434	+ 4377.864216	+ 3358.277916
			+ 24510.588506	+ 26248.997601
		倍面積	= 1738.409095	
		面積	= 869.204547	

* * * * * 各 筆 面 積 計 算 書 * * * * *

3 LOT

点 名	X	Y	(X-X0)*(YN-1-Y0)	(XN-1-X0)*(Y-Y0)
X0·Y0	- 150900.000	- 38800.000		
27-24	- 150965.097	- 38816.265		
27-25	- 150968.017	- 38842.819	+ 1106.296505	+ 2787.388443
27-33	- 150942.084	- 38845.683	+ 1801.994796	+ 3107.220611
27-37	- 150939.774	- 38819.064	+ 1816.995642	+ 802.289376
27-24	- 150965.097	- 38816.265	+ 1241.009208	+ 646.924110
			+ 5966.296151	+ 7343.822540
		倍面積	= 1377.526389	
		面積	= 688.763194	

4 LOT

点 名	X	Y	(X-X0)*(YN-1-Y0)	(XN-1-X0)*(Y-Y0)
X0·Y0	- 150900.000	- 38800.000		
27-25	- 150968.017	- 38842.819		
27-26	- 150969.996	- 38860.822	+ 2997.158724	+ 4136.929974
27-30	- 150943.650	- 38863.729	+ 2654.880300	+ 4460.775084
27-33	- 150942.084	- 38845.683	+ 2681.971236	+ 1994.062950
27-25	- 150968.017	- 38842.819	+ 3107.220611	+ 1801.994796
			+ 11441.230871	+ 12393.762804
		倍面積	= 952.531933	
		面積	= 476.265966	

5 LOT

点 名	X	Y	(X-X0)*(YN-1-Y0)	(XN-1-X0)*(Y-Y0)
X0·Y0	- 150900.000	- 38800.000		
27-26	- 150969.996	- 38860.822		
27-12	- 150972.387	- 38882.575	+ 4402.722114	+ 5779.919700
27-13	- 150970.552	- 38884.958	+ 5825.831400	+ 6149.854746
27-27	- 150945.660	- 38886.896	+ 3879.182280	+ 6130.686592
27-30	- 150943.650	- 38863.729	+ 3793.010400	+ 2909.866140
27-26	- 150969.996	- 38860.822	+ 4460.775084	+ 2654.880300
			+ 22361.521278	+ 23625.207478
		倍面積	= 1263.686200	
		面積	= 631.843100	

6 LOT

点 名	X	Y	(X-X0)*(YN-1-Y0)	(XN-1-X0)*(Y-Y0)
X0·Y0	- 150900.000	- 38800.000		
27-27	- 150945.660	- 38886.896		
27-28	- 150944.398	- 38886.994	+ 3858.008608	+ 3972.146040

* * * * * 各 筆 面 積 計 算 書 * * * * *

点 名	X	Y	(X-X0)*(YN-1-Y0)	(XN-1-X0)*(Y-Y0)
27-41	- 150943.293	- 38874.260	+ 3766.231242	+ 3296.995480
27-29	- 150944.554	- 38874.145	+ 3308.580040	+ 3209.959485
27-27	- 150945.660	- 38886.896	+ 3385.460700	+ 3871.564384
			+ 14318.280590	+ 14350.665389
		倍面積	= 32.384799	
		面積	= 16.192399	

7 LOT

点 名	X	Y	(X-X0)*(YN-1-Y0)	(XN-1-X0)*(Y-Y0)
X0-Y0	- 150900.000	- 38800.000		
27-28	- 150944.398	- 38886.994		
27-6	- 150932.817	- 38887.896	+ 2854.882098	+ 3902.406608
27-7	- 150930.512	- 38885.950	+ 2681.882752	+ 2820.621150
27-14	- 150929.556	- 38875.509	+ 2540.338200	+ 2303.930608
27-41	- 150943.293	- 38874.260	+ 3269.011137	+ 2194.828560
27-28	- 150944.398	- 38886.994	+ 3296.995480	+ 3766.231242
			+ 14643.109667	+ 14988.018168
		倍面積	= 344.908501	
		面積	= 172.454250	

8 LOT

点 名	X	Y	(X-X0)*(YN-1-Y0)	(XN-1-X0)*(Y-Y0)
X0-Y0	- 150900.000	- 38800.000		
27-14	- 150929.556	- 38875.509		
27-15	- 150928.553	- 38864.556	+ 2156.008477	+ 1908.017136
27-31	- 150943.604	- 38863.203	+ 2814.899824	+ 1804.635259
27-29	- 150944.554	- 38874.145	+ 2815.946462	+ 3233.018580
27-14	- 150929.556	- 38875.509	+ 2191.429620	+ 3364.227986
			+ 9978.284383	+ 10309.898961
		倍面積	= 331.614578	
		面積	= 165.807289	

9 LOT

点 名	X	Y	(X-X0)*(YN-1-Y0)	(XN-1-X0)*(Y-Y0)
X0-Y0	- 150900.000	- 38800.000		
27-15	- 150928.553	- 38864.556		
27-16	- 150927.806	- 38856.396	+ 1795.044136	+ 1610.274988
27-32	- 150942.895	- 38855.034	+ 2419.106420	+ 1530.275404
27-31	- 150943.604	- 38863.203	+ 2399.702536	+ 2711.092685
27-15	- 150928.553	- 38864.556	+ 1804.635259	+ 2814.899824
			+ 8418.488351	+ 8666.542901
		倍面積	= 248.054550	
		面積	= 124.027275	

* * * * * 各 筆 面 積 計 算 書 * * * * *

10 LOT

点 名	X	Y	(X-X0)*(YN-1-Y0)	(XN-1-X0)*(Y-Y0)
X0·Y0	- 150900.000	- 38800.000		
27-16	- 150927.806	- 38856.396		
27-17	- 150926.811	- 38845.526	+ 1512.033156	+ 1265.895956
27-34	- 150941.951	- 38844.150	+ 1909.861226	+ 1183.705650
27-32	- 150942.895	- 38855.034	+ 1893.814250	+ 2308.731334
27-16	- 150927.806	- 38856.396	+ 1530.275404	+ 2419.106420
			+ 6845.984036	+ 7177.439360
		倍面積	= 331.455324	
		面積	= 165.727662	

11 LOT

点 名	X	Y	(X-X0)*(YN-1-Y0)	(XN-1-X0)*(Y-Y0)
X0·Y0	- 150900.000	- 38800.000		
27-17	- 150926.811	- 38845.526		
27-18	- 150926.148	- 38838.283	+ 1190.413848	+ 1026.405513
27-35	- 150941.321	- 38836.888	+ 1581.891843	+ 964.547424
27-34	- 150941.951	- 38844.150	+ 1547.488488	+ 1824.322150
27-17	- 150926.811	- 38845.526	+ 1183.705650	+ 1909.861226
			+ 5503.499829	+ 5725.136313
		倍面積	= 221.636484	
		面積	= 110.818242	

12 LOT

点 名	X	Y	(X-X0)*(YN-1-Y0)	(XN-1-X0)*(Y-Y0)
X0·Y0	- 150900.000	- 38800.000		
27-18	- 150926.148	- 38838.283		
27-19	- 150925.482	- 38831.014	+ 975.527406	+ 810.954072
27-36	- 150940.692	- 38829.648	+ 1262.021688	+ 755.490336
27-35	- 150941.321	- 38836.888	+ 1225.085008	+ 1501.046496
27-18	- 150926.148	- 38838.283	+ 964.547424	+ 1581.891843
			+ 4427.181526	+ 4649.382747
		倍面積	= 222.201221	
		面積	= 111.100610	

13 LOT

点 名	X	Y	(X-X0)*(YN-1-Y0)	(XN-1-X0)*(Y-Y0)
X0·Y0	- 150900.000	- 38800.000		
27-19	- 150925.482	- 38831.014		
27-20	- 150924.402	- 38819.220	+ 756.803628	+ 489.764040
27-38	- 150939.671	- 38817.876	+ 762.476620	+ 436.210152

* * * * * 各 筆 面 積 計 算 書 * * * * *

点 名	X	Y	(X-X0)*(Yn-1-Y0)	(Xn-1-X0)*(Y-Y0)
27-36	- 150940.692	- 38829.648	+ 727.410192	+ 1176.165808
27-19	- 150925.482	- 38831.014	+ 755.490336	+ 1262.021688
			+ 3002.180776	+ 3364.161688
		倍面積	= 361.980912	
		面積	= 180.990456	

14 LOT

点 名	X	Y	(X-X0)*(Yn-1-Y0)	(Xn-1-X0)*(Y-Y0)
X0-Y0	- 150900.000	- 38800.000		
27-20	- 150924.402	- 38819.220		
27-21	- 150923.423	- 38808.528	+ 450.190060	+ 208.100256
27-39	- 150938.741	- 38807.164	+ 330.383248	+ 167.802372
27-38	- 150939.671	- 38817.876	+ 284.203044	+ 692.534116
27-20	- 150924.402	- 38819.220	+ 436.210152	+ 762.476620
			+ 1500.986504	+ 1830.913364
		倍面積	= 329.926860	
		面積	= 164.963430	

15 LOT

点 名	X	Y	(X-X0)*(Yn-1-Y0)	(Xn-1-X0)*(Y-Y0)
X0-Y0	- 150900.000	- 38700.000		
27-21	- 150923.423	- 38808.528		
27-2	- 150922.348	- 38796.786	+ 2425.383744	+ 2267.018478
27-22	- 150922.564	- 38795.680	+ 2183.879304	+ 2138.256640
27-40	- 150937.627	- 38794.325	+ 3600.151360	+ 2128.349300
27-39	- 150938.741	- 38807.164	+ 3654.244825	+ 4032.259828
27-21	- 150923.423	- 38808.528	+ 2510.102372	+ 4204.483248
			+ 14373.761605	+ 14770.367494
		倍面積	= 396.605889	
		面積	= 198.302944	

1 区切り

点 名	X	Y	(X-X0)*(Yn-1-Y0)	(Xn-1-X0)*(Y-Y0)
X0-Y0	- 150900.000	- 38800.000		
27-1	- 150930.705	- 38888.060		
27-6	- 150932.817	- 38887.896	+ 2889.865020	+ 2698.846680
27-7	- 150930.512	- 38885.950	+ 2681.882752	+ 2820.621150
27-1	- 150930.705	- 38888.060	+ 2639.094750	+ 2686.886720
			+ 8210.842522	+ 8206.354550
		倍面積	= 4.487972	
		面積	= 2.243986	

* * * * * 各 筆 面 積 計 算 書 * * * * *

3 区

点 名	X	Y	(X-X0)*(YN-1-Y0)	(XN-1-X0)*(Y-Y0)
X0·Y0	- 150900.000	- 38700.000		
27-3	- 150924.495	- 38785.781		
27-8	- 150924.142	- 38787.592	+ 2070.924902	+ 2145.566040
27-9	- 150926.330	- 38785.580	+ 2306.297360	+ 2066.072360
27-3	- 150924.495	- 38785.781	+ 2096.282100	+ 2258.613730
			+ 6473.504362	+ 6470.252130
		倍面積	= 3.252232	
		面積	= 1.626116	

4 区

点 名	X	Y	(X-X0)*(YN-1-Y0)	(XN-1-X0)*(Y-Y0)
X0·Y0	- 150900.000	- 38700.000		
27-4	- 150961.302	- 38781.740		
27-10	- 150959.323	- 38781.957	+ 4849.062020	+ 5024.128014
27-11	- 150961.531	- 38783.823	+ 5042.896167	+ 4972.631829
27-4	- 150961.302	- 38781.740	+ 5138.517546	+ 5029.543940
			+ 15030.475733	+ 15026.303783
		倍面積	= 4.171950	
		面積	= 2.085975	

5 区

点 名	X	Y	(X-X0)*(YN-1-Y0)	(XN-1-X0)*(Y-Y0)
X0·Y0	- 150900.000	- 38800.000		
27-5	- 150972.631	- 38884.796		
27-12	- 150972.387	- 38882.575	+ 6138.128052	+ 5997.504825
27-13	- 150970.552	- 38884.958	+ 5825.831400	+ 6149.854746
27-5	- 150972.631	- 38884.796	+ 6170.584498	+ 5982.527392
			+ 18134.543950	+ 18129.886963
		倍面積	= 4.656987	
		面積	= 2.328493	