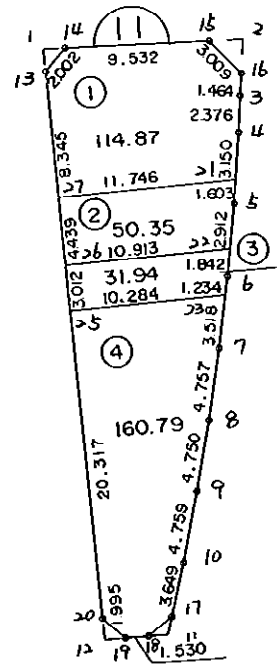


1 1 B L O C K



* * * 各筆面積 集計表 * * *

街区名・筆名	各筆面積	隔切面積
11 BLOCK	357.98	
1 LOT	114.87	
2 LOT	50.35	
3 LOT	31.94	
4 LOT	75.22	
5 LOT	85.57	
1 スミキリ		1.05
2 スミキリ		2.49
11 スミキリ		0.74
12 スミキリ		0.97
合計 =	357.95	5.25

合筆 160.79m²

* * * * * 各 筆 面 積 計 算 書 * * * * *

11 BLOCK

点 名	X	Y	(X-XD)*(YN-1-YD)	(XN-1-XD)*(Y-YD)
XD·YD	- 150700.000	- 38500.000		
11-13	- 150726.813	- 38576.601		
11-14	- 150725.264	- 38575.333	+ 1935.247664	+ 2019.903729
11-15	- 150724.669	- 38565.820	+ 1858.389777	+ 1662.876480
11-16	- 150726.773	- 38563.669	+ 1762.198860	+ 1570.650561
11-3	- 150728.236	- 38563.723	+ 1797.757884	+ 1706.055879
11-4	- 150730.610	- 38563.810	+ 1950.561030	+ 1801.739160
11-5	- 150735.357	- 38564.048	+ 2256.130170	+ 1960.509280
11-6	- 150740.096	- 38564.431	+ 2568.068608	+ 2278.086867
11-7	- 150744.822	- 38564.929	+ 2887.926282	+ 2603.393184
11-8	- 150749.540	- 38565.538	+ 3216.582660	+ 2937.544236
11-9	- 150754.233	- 38566.274	+ 3554.322354	+ 3283.213960
11-10	- 150758.917	- 38567.118	+ 3904.665258	+ 3640.010494
11-17	- 150762.492	- 38567.850	+ 4194.338056	+ 3997.518450
11-18	- 150763.814	- 38569.374	+ 4329.779900	+ 4335.320008
11-19	- 150763.964	- 38570.897	+ 4437.438536	+ 4524.221158
11-20	- 150762.685	- 38572.428	+ 4444.178445	+ 4632.784592
11-13	- 150726.813	- 38576.601	+ 1942.011964	+ 4801.733685
			+ 47039.597448	+ 47755.561723
		倍面積	= 715.964275	
		面積	= 357.982137	

1 LOT

点 名	X	Y	(X-XD)*(YN-1-YD)	(XN-1-XD)*(Y-YD)
XD·YD	- 150700.000	- 38500.000		
11-27	- 150735.102	- 38575.637		
11-13	- 150726.813	- 38576.601	+ 2028.054881	+ 2688.848302
11-14	- 150725.264	- 38575.333	+ 1935.247664	+ 2019.903729
11-15	- 150724.669	- 38565.820	+ 1858.389777	+ 1662.876480
11-16	- 150726.773	- 38563.669	+ 1762.198860	+ 1570.650561
11-3	- 150728.236	- 38563.723	+ 1797.757884	+ 1706.055879
11-4	- 150730.610	- 38563.810	+ 1950.561030	+ 1801.739160
11-21	- 150733.756	- 38563.968	+ 2153.970360	+ 1958.060480
11-27	- 150735.102	- 38575.637	+ 2245.404736	+ 2553.202572
			+ 15731.585192	+ 15961.337163
		倍面積	= 229.751971	
		面積	= 114.875985	

2 LOT

点 名	X	Y	(X-XD)*(YN-1-YD)	(XN-1-XD)*(Y-YD)
XD·YD	- 150700.000	- 38500.000		
11-21	- 150733.756	- 38563.968		
11-5	- 150735.357	- 38564.048	+ 2261.716576	+ 2162.004288

* * * * * 各 筆 面 積 計 算 書 * * * * *

点 名	X	Y	(X-X0)*(YN-1-Y0)	(XN-1-X0)*(Y-Y0)
11-22	- 150738.260	- 38564.283	+ 2450.476480	+ 2272.854031
11-26	- 150739.511	- 38575.124	+ 2539.885613	+ 2874.244240
11-27	- 150735.102	- 38575.637	+ 2637.002648	+ 2988.493507
11-21	- 150733.756	- 38563.968	+ 2553.202572	+ 2245.404736
			+ 12442.283889	+ 12543.000802
		倍面積	= 100.716913	
		面積	= 50.358456	

3 LOT

点 名	X	Y	(X-X0)*(YN-1-Y0)	(XN-1-X0)*(Y-Y0)
X0-Y0	- 150700.000	- 38500.000		
11-22	- 150738.260	- 38564.283		
11-6	- 150740.096	- 38564.431	+ 2577.491168	+ 2465.130060
11-23	- 150741.323	- 38564.560	+ 2662.482213	+ 2588.597760
11-25	- 150742.503	- 38574.776	+ 2743.993680	+ 3089.968648
11-26	- 150739.511	- 38575.124	+ 2954.474536	+ 3192.995372
11-22	- 150738.260	- 38564.283	+ 2874.244240	+ 2539.885613
			+ 13812.685837	+ 13876.577453
		倍面積	= 63.891616	
		面積	= 31.945808	

4 LOT

点 名	X	Y	(X-X0)*(YN-1-Y0)	(XN-1-X0)*(Y-Y0)
X0-Y0	- 150700.000	- 38500.000		
11-23	- 150741.323	- 38564.560		
11-7	- 150744.822	- 38564.929	+ 2893.708320	+ 2683.061067
11-8	- 150749.540	- 38565.538	+ 3216.582660	+ 2937.544236
11-9	- 150754.233	- 38566.274	+ 3554.322354	+ 3283.213960
11-10	- 150758.917	- 38567.118	+ 3904.665258	+ 3640.010494
11-17	- 150762.492	- 38567.850	+ 4194.338056	+ 3997.518450
11-24	- 150762.942	- 38568.369	+ 4270.614700	+ 4272.515548
11-28	- 150742.046	- 38570.816	+ 2874.642974	+ 4457.300672
11-23	- 150741.323	- 38564.560	+ 2926.329568	+ 2714.489760
			+ 27835.203890	+ 27985.654187
		倍面積	= 150.450297	
		面積	= 75.225148	

5 LOT

点 名	X	Y	(X-X0)*(YN-1-Y0)	(XN-1-X0)*(Y-Y0)
X0-Y0	- 150700.000	- 38500.000		
11-24	- 150762.942	- 38568.369		
11-18	- 150763.814	- 38569.374	+ 4362.899366	+ 4366.538308

* * * * * 各 筆 面 積 計 算 書 * * * * *

点 名	X	Y	(X-X0)*(YN-1-Y0)	(XN-1-X0)*(Y-Y0)
11-19	- 150763.964	- 38570.897	+ 4437.438536	+ 4524.221158
11-20	- 150762.685	- 38572.428	+ 4444.178445	+ 4632.784592
11-25	- 150742.503	- 38574.776	+ 3078.407284	+ 4687.333560
11-28	- 150742.046	- 38570.816	+ 3144.031696	+ 3009.892448
11-24	- 150762.942	- 38568.369	+ 4457.300672	+ 2874.642974
			+ 23924.255999	+ 24095.413040
		倍面積	= 171.157041	
		面積	= 85.578520	

1 スミリ

点 名	X	Y	(X-X0)*(YN-1-Y0)	(XN-1-X0)*(Y-Y0)
X0-Y0	- 150700.000	- 38500.000		
11-1	- 150725.354	- 38576.771		
11-13	- 150726.813	- 38576.601	+ 2058.460823	+ 1942.141754
11-14	- 150725.264	- 38575.333	+ 1935.247664	+ 2019.903729
11-1	- 150725.354	- 38576.771	+ 1909.992882	+ 1939.542544
			+ 5903.701369	+ 5901.588027
		倍面積	= 2.113342	
		面積	= 1.056671	

2 スミリ

点 名	X	Y	(X-X0)*(YN-1-Y0)	(XN-1-X0)*(Y-Y0)
X0-Y0	- 150700.000	- 38500.000		
11-2	- 150724.529	- 38563.587		
11-15	- 150724.669	- 38565.820	+ 1568.627703	+ 1614.498780
11-16	- 150726.773	- 38563.669	+ 1762.198860	+ 1570.650561
11-2	- 150724.529	- 38563.587	+ 1561.736901	+ 1702.414751
			+ 4892.563464	+ 4887.564092
		倍面積	= 4.999372	
		面積	= 2.499686	

11 スミリ

点 名	X	Y	(X-X0)*(YN-1-Y0)	(XN-1-X0)*(Y-Y0)
X0-Y0	- 150700.000	- 38500.000		
11-11	- 150763.688	- 38568.095		
11-17	- 150762.492	- 38567.850	+ 4255.392740	+ 4321.230800
11-18	- 150763.814	- 38569.374	+ 4329.779900	+ 4335.320008
11-11	- 150763.688	- 38568.095	+ 4418.291312	+ 4345.414330
			+ 13003.463952	+ 13001.965138
		倍面積	= 1.498814	
		面積	= 0.749407	

* * * * * 各 筆 面 積 計 算 書 * * * * *

12 区

点 名	X	Y	(X-X0)*(YN-1-Y0)	(XN-1-X0)*(Y-Y0)
X0・Y0	- 150700.000	- 38500.000		
11-12	- 150764.099	- 38572.263		
11-19	- 150763.964	- 38570.897	+ 4622.230532	+ 4544.426803
11-20	- 150762.685	- 38572.428	+ 4444.178445	+ 4632.784592
11-12	- 150764.099	- 38572.263	+ 4642.562372	+ 4529.806155
			+ 13708.971349	+ 13707.017550
		倍面積	= 1.953799	
		面積	= 0.976899	