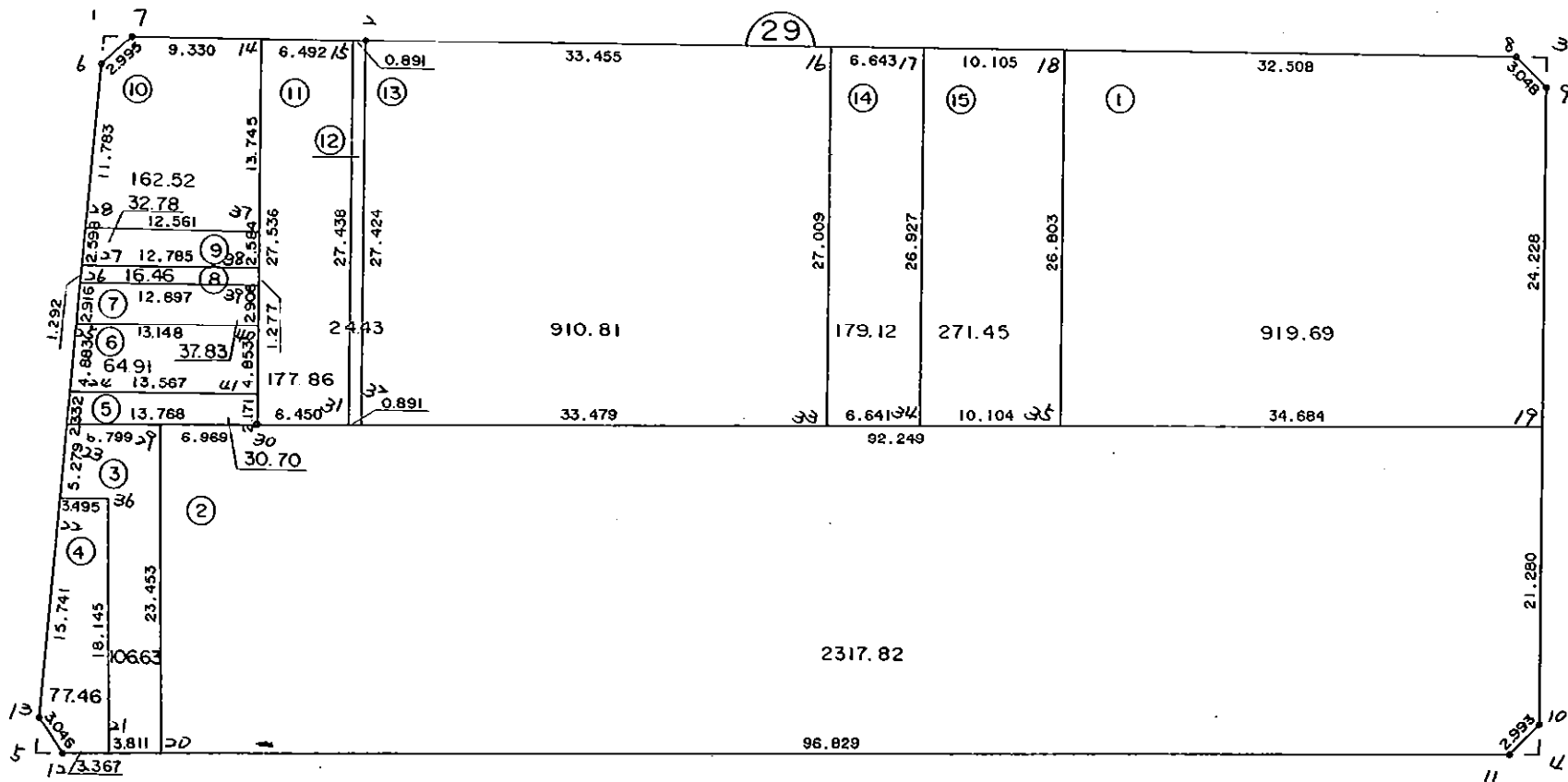


2 9 B L O C K

1



* * * 各筆面積 集計表 * * *

街区名・筆名	各筆面積	隅切面積
29 BLOCK	5330.54	
1 LOT	919.69	
2 LOT	2317.82	
3 LOT	106.63	
4 LOT	77.46	
5 LOT	30.70	
6 LOT	64.91	
7 LOT	37.83	
8 LOT	16.46	
9 LOT	32.78	
10 LOT	162.52	
11 LOT	177.86	
12 LOT	24.43	
13 LOT	910.81	
14 LOT	179.12	
15 LOT	271.45	
1 スミキリ		2.06
3 スミキリ		2.32
4 スミキリ		2.21
5 スミキリ		2.45
合計 =	5330.47	9.04

* * * * * 各 筆 面 積 計 算 書 * * * * *

29 BLOCK

点 名	X	Y	(X-X0)*(YN-1-Y0)	(XN-1-X0)*(Y-Y0)
X0·Y0	- 150900.000	- 38700.000		
29-6	- 150990.676	- 38883.911		
29-7	- 150988.429	- 38881.931	+ 16263.065819	+ 16496.775356
29-2	- 150986.644	- 38865.313	+ 15763.229564	+ 14618.463277
29-8	- 150977.574	- 38783.101	+ 12823.990662	+ 7200.203044
29-9	- 150979.470	- 38780.714	+ 6604.036470	+ 6261.307836
29-10	- 151024.704	- 38775.721	+ 10065.358656	+ 6017.547870
29-11	- 151027.054	- 38777.574	+ 9620.655934	+ 9673.788096
29-12	- 151039.805	- 38880.797	+ 10845.233070	+ 22970.982038
29-13	- 151037.487	- 38882.773	+ 24857.237139	+ 25552.579265
29-6	- 150990.676	- 38883.911	+ 16573.124548	+ 25285.371657
			+123415.931862	+134077.018439
		倍面積	= 10661.086577	
		面積	= 5330.543288	

1 LOT

点 名	X	Y	(X-X0)*(YN-1-Y0)	(XN-1-X0)*(Y-Y0)
X0·Y0	- 150900.000	- 38700.000		
29-18	- 150981.139	- 38815.413		
29-8	- 150977.574	- 38783.101	+ 8953.048062	+ 6742.732039
29-9	- 150979.470	- 38780.714	+ 6604.036470	+ 6261.307836
29-19	- 151003.552	- 38778.056	+ 8358.096128	+ 6203.110320
29-35	- 151007.781	- 38812.481	+ 8412.953736	+ 11647.632512
29-18	- 150981.139	- 38815.413	+ 9126.595859	+ 12439.328553
			+ 41454.730255	+ 43294.111260
		倍面積	= 1839.381005	
		面積	= 919.690502	

2 LOT

点 名	X	Y	(X-X0)*(YN-1-Y0)	(XN-1-X0)*(Y-Y0)
X0·Y0	- 151000.000	- 38700.000		
29-19	- 151003.552	- 38778.056		
29-10	- 151024.704	- 38775.721	+ 1928.295424	+ 268.960992
29-11	- 151027.054	- 38777.574	+ 2048.555934	+ 1916.388096
29-20	- 151038.925	- 38873.673	+ 3019.567950	+ 4698.549342
29-29	- 151015.647	- 38876.534	+ 2717.461431	+ 6871.585950
29-30	- 151014.800	- 38869.617	+ 2612.703200	+ 2653.997199
29-19	- 151003.552	- 38778.056	+ 602.479584	+ 1155.228800
			+ 12929.063523	+ 17564.710379
		倍面積	= 4635.646856	
		面積	= 2317.823428	

* * * * * 各 筆 面 積 計 算 書 * * * * *

3 LOT

点 名	X	Y	(X-X0)*(YN-1-Y0)	(XN-1-X0)*(Y-Y0)
X0·Y0	- 151000.000	- 38800.000		
29-20	- 151038.925	- 38873.673		
29-21	- 151039.392	- 38877.455	+ 2902.126816	+ 3014.935875
29-36	- 151021.384	- 38879.679	+ 1656.297720	+ 3138.715168
29-22	- 151021.751	- 38883.155	+ 1733.097929	+ 1778.186520
29-23	- 151016.474	- 38883.283	+ 1369.895470	+ 1811.488533
29-29	- 151015.647	- 38876.534	+ 1303.129101	+ 1260.821116
29-20	- 151038.925	- 38873.673	+ 2979.085950	+ 1152.761431
			+ 11943.632986	+ 12156.908643
		倍面積	= 213.275657	
		面積	= 106.637828	

4 LOT

点 名	X	Y	(X-X0)*(YN-1-Y0)	(XN-1-X0)*(Y-Y0)
X0·Y0	- 151000.000	- 38800.000		
29-21	- 151039.392	- 38877.455		
29-12	- 151039.805	- 38880.797	+ 3083.096275	+ 3182.755424
29-13	- 151037.487	- 38882.773	+ 3028.837139	+ 3294.779265
29-22	- 151021.751	- 38883.155	+ 1800.395523	+ 3117.231485
29-36	- 151021.384	- 38879.679	+ 1778.186520	+ 1733.097929
29-21	- 151039.392	- 38877.455	+ 3138.715168	+ 1656.297720
			+ 12829.230625	+ 12984.161823
		倍面積	= 154.931198	
		面積	= 77.465599	

5 LOT

点 名	X	Y	(X-X0)*(YN-1-Y0)	(XN-1-X0)*(Y-Y0)
X0·Y0	- 151000.000	- 38800.000		
29-23	- 151016.474	- 38883.283		
29-24	- 151014.143	- 38883.340	+ 1177.871469	+ 1372.943160
29-41	- 151012.642	- 38869.856	+ 1053.584280	+ 987.973408
29-30	- 151014.800	- 38869.617	+ 1033.868800	+ 880.098114
29-23	- 151016.474	- 38883.283	+ 1146.870458	+ 1232.588400
			+ 4412.195007	+ 4473.603082
		倍面積	= 61.408075	
		面積	= 30.704037	

6 LOT

点 名	X	Y	(X-X0)*(YN-1-Y0)	(XN-1-X0)*(Y-Y0)
X0·Y0	- 151000.000	- 38800.000		
29-24	- 151014.143	- 38883.340		
29-25	- 151009.260	- 38883.460	+ 771.728400	+ 1180.374780

* * * * * 各 筆 面 積 計 算 書 * * * * *

点 名	X	Y	(X-X0)*(YN-1-Y0)	(XN-1-X0)*(Y-Y0)
29-40	- 151007.819	- 38870.391	+ 652.573740	+ 651.820660
29-41	- 151012.642	- 38869.856	+ 889.883022	+ 546.204064
29-24	- 151014.143	- 38883.340	+ 987.973408	+ 1053.584280
			+ 3302.158570	+ 3431.983784
		倍面積	= 129.825214	
		面積	= 64.912607	

7 LOT

点 名	X	Y	(X-X0)*(YN-1-Y0)	(XN-1-X0)*(Y-Y0)
X0·Y0	- 151000.000	- 38800.000		
29-25	- 151009.260	- 38883.460		
29-26	- 151006.345	- 38883.531	+ 529.553700	+ 773.497060
29-39	- 151004.931	- 38870.712	+ 411.891361	+ 448.667640
29-40	- 151007.819	- 38870.391	+ 552.897128	+ 347.098021
29-25	- 151009.260	- 38883.460	+ 651.820660	+ 652.573740
			+ 2146.162849	+ 2221.836461
		倍面積	= 75.673612	
		面積	= 37.836806	

8 LOT

点 名	X	Y	(X-X0)*(YN-1-Y0)	(XN-1-X0)*(Y-Y0)
X0·Y0	- 151000.000	- 38800.000		
29-26	- 151006.345	- 38883.531		
29-27	- 151005.053	- 38883.562	+ 422.082143	+ 530.200890
29-38	- 151003.662	- 38870.853	+ 306.004044	+ 358.020209
29-39	- 151004.931	- 38870.712	+ 349.376143	+ 258.947344
29-26	- 151006.345	- 38883.531	+ 448.667640	+ 411.891361
			+ 1526.129970	+ 1559.059804
		倍面積	= 32.929834	
		面積	= 16.464917	

9 LOT

点 名	X	Y	(X-X0)*(YN-1-Y0)	(XN-1-X0)*(Y-Y0)
X0·Y0	- 151000.000	- 38800.000		
29-27	- 151005.053	- 38883.562		
29-28	- 151002.456	- 38883.625	+ 205.228272	+ 422.557125
29-37	- 151001.093	- 38871.138	+ 91.402125	+ 174.714928
29-38	- 151003.662	- 38870.853	+ 260.507356	+ 77.442329
29-27	- 151005.053	- 38883.562	+ 358.020209	+ 306.004044
			+ 915.157962	+ 980.718426
		倍面積	= 65.560464	
		面積	= 32.780232	

* * * * * 各 筆 面 積 計 算 書 * * * * *

10 LOT

点 名	X	Y	(X-X0)*(YN-1-Y0)	(XN-1-X0)*(Y-Y0)
X0·Y0	- 150900.000	- 38800.000		
29-28	- 151002.456	- 38883.625		
29-6	- 150990.676	- 38883.911	+ 7582.780500	+ 8597.185416
29-7	- 150988.429	- 38881.931	+ 7420.165819	+ 7429.175356
29-14	- 150987.432	- 38872.654	+ 7163.391192	+ 6424.720566
29-37	- 151001.093	- 38871.138	+ 7344.810822	+ 6219.737616
29-28	- 151002.456	- 38883.625	+ 7288.514928	+ 8453.902125
			+ 36799.663261	+ 37124.721079
		倍面積	= 325.057818	
		面積	= 162.528909	

11 LOT

点 名	X	Y	(X-X0)*(YN-1-Y0)	(XN-1-X0)*(Y-Y0)
X0·Y0	- 150900.000	- 38800.000		
29-14	- 150987.432	- 38872.654		
29-15	- 150986.739	- 38866.199	+ 6301.935306	+ 5787.910968
29-31	- 151014.014	- 38863.215	+ 7547.612786	+ 5483.205885
29-30	- 151014.800	- 38869.617	+ 7257.082000	+ 7937.312638
29-14	- 150987.432	- 38872.654	+ 6086.753544	+ 8340.679200
			+ 27193.383636	+ 27549.108691
		倍面積	= 355.725055	
		面積	= 177.862527	

12 LOT

点 名	X	Y	(X-X0)*(YN-1-Y0)	(XN-1-X0)*(Y-Y0)
X0·Y0	- 150900.000	- 38800.000		
29-15	- 150986.739	- 38866.199		
29-2	- 150986.644	- 38865.313	+ 5735.746156	+ 5665.184307
29-32	- 151013.905	- 38862.331	+ 7439.477265	+ 5400.607164
29-31	- 151014.014	- 38863.215	+ 7106.606634	+ 7200.504575
29-15	- 150986.739	- 38866.199	+ 5483.205885	+ 7547.612786
			+ 25765.035940	+ 25813.908832
		倍面積	= 48.872892	
		面積	= 24.436446	

13 LOT

点 名	X	Y	(X-X0)*(YN-1-Y0)	(XN-1-X0)*(Y-Y0)
X0·Y0	- 150900.000	- 38800.000		
29-2	- 150986.644	- 38865.313		
29-16	- 150982.976	- 38832.060	+ 5419.411488	+ 2777.806640

* * * * * 各 筆 面 積 計 算 書 * * * * *

点 名	X	Y	(X-X0)*(Yn-1-Y0)	(Xn-1-X0)*(Y-Y0)
29-33	- 151009.823	- 38829.102	+ 3520.925380	+ 2414.767552
29-32	- 151013.905	- 38862.331	+ 3314.863310	+ 6845.377413
29-2	- 150986.644	- 38865.313	+ 5400.607164	+ 7439.477265
			+ 17655.807342	+ 19477.428870
		倍面積	= 1821.621528	
		面積	= 910.810764	

14 LOT

点 名	X	Y	(X-X0)*(Yn-1-Y0)	(Xn-1-X0)*(Y-Y0)
X0·Y0	- 150900.000	- 38800.000		
29-16	- 150982.976	- 38832.060		
29-17	- 150982.248	- 38825.457	+ 2636.870880	+ 2112.320032
29-34	- 151009.013	- 38822.510	+ 2775.143941	+ 1851.402480
29-33	- 151009.823	- 38829.102	+ 2472.115730	+ 3172.496326
29-16	- 150982.976	- 38832.060	+ 2414.767552	+ 3520.925380
			+ 10298.898103	+ 10657.144218
		倍面積	= 358.246115	
		面積	= 179.123057	

15 LOT

点 名	X	Y	(X-X0)*(Yn-1-Y0)	(Xn-1-X0)*(Y-Y0)
X0·Y0	- 150900.000	- 38800.000		
29-17	- 150982.248	- 38825.457		
29-18	- 150981.139	- 38815.413	+ 2065.555523	+ 1267.688424
29-35	- 151007.781	- 38812.481	+ 1661.228553	+ 1012.695859
29-34	- 151009.013	- 38822.510	+ 1360.591253	+ 2426.150310
29-17	- 150982.248	- 38825.457	+ 1851.402480	+ 2775.143941
			+ 6938.777809	+ 7481.678534
		倍面積	= 542.900725	
		面積	= 271.450362	

1 スキリ

点 名	X	Y	(X-X0)*(Yn-1-Y0)	(Xn-1-X0)*(Y-Y0)
X0·Y0	- 150900.000	- 38800.000		
29-1	- 150988.647	- 38883.960		
29-6	- 150990.676	- 38883.911	+ 7613.156960	+ 7438.458417
29-7	- 150988.429	- 38881.931	+ 7420.165819	+ 7429.175356
29-1	- 150988.647	- 38883.960	+ 7262.937357	+ 7424.498840
			+ 22296.260136	+ 22292.132613
		倍面積	= 4.127523	
		面積	= 2.063761	

* * * * * 各 筆 面 積 計 算 書 * * * * *

3 区

点 名	X	Y	(X-X0)*(YN-1-Y0)	(XN-1-X0)*(Y-Y0)
X0・Y0	- 150900.000	- 38700.000		
29-3	- 150977.337	- 38780.949		
29-8	- 150977.574	- 38783.101	+ 6279.537726	+ 6426.782037
29-9	- 150979.470	- 38780.714	+ 6604.036470	+ 6261.307836
29-3	- 150977.337	- 38780.949	+ 6242.178618	+ 6433.017030
			+ 19125.752814	+ 19121.106903
		倍面積	= 4.645911	
		面積	= 2.322955	

4 区

点 名	X	Y	(X-X0)*(YN-1-Y0)	(XN-1-X0)*(Y-Y0)
X0・Y0	- 151000.000	- 38700.000		
29-4	- 151026.797	- 38775.490		
29-10	- 151024.704	- 38775.721	+ 1864.904960	+ 2029.095637
29-11	- 151027.054	- 38777.574	+ 2048.555934	+ 1916.388096
29-4	- 151026.797	- 38775.490	+ 2078.750478	+ 2042.306460
			+ 5992.211372	+ 5987.790193
		倍面積	= 4.421179	
		面積	= 2.210589	

5 区

点 名	X	Y	(X-X0)*(YN-1-Y0)	(XN-1-X0)*(Y-Y0)
X0・Y0	- 151000.000	- 38800.000		
29-5	- 151040.041	- 38882.711		
29-12	- 151039.805	- 38880.797	+ 3292.311355	+ 3235.192677
29-13	- 151037.487	- 38882.773	+ 3028.837139	+ 3294.779265
29-5	- 151040.041	- 38882.711	+ 3314.313693	+ 3100.587257
			+ 9635.462187	+ 9630.559199
		倍面積	= 4.902988	
		面積	= 2.451494	