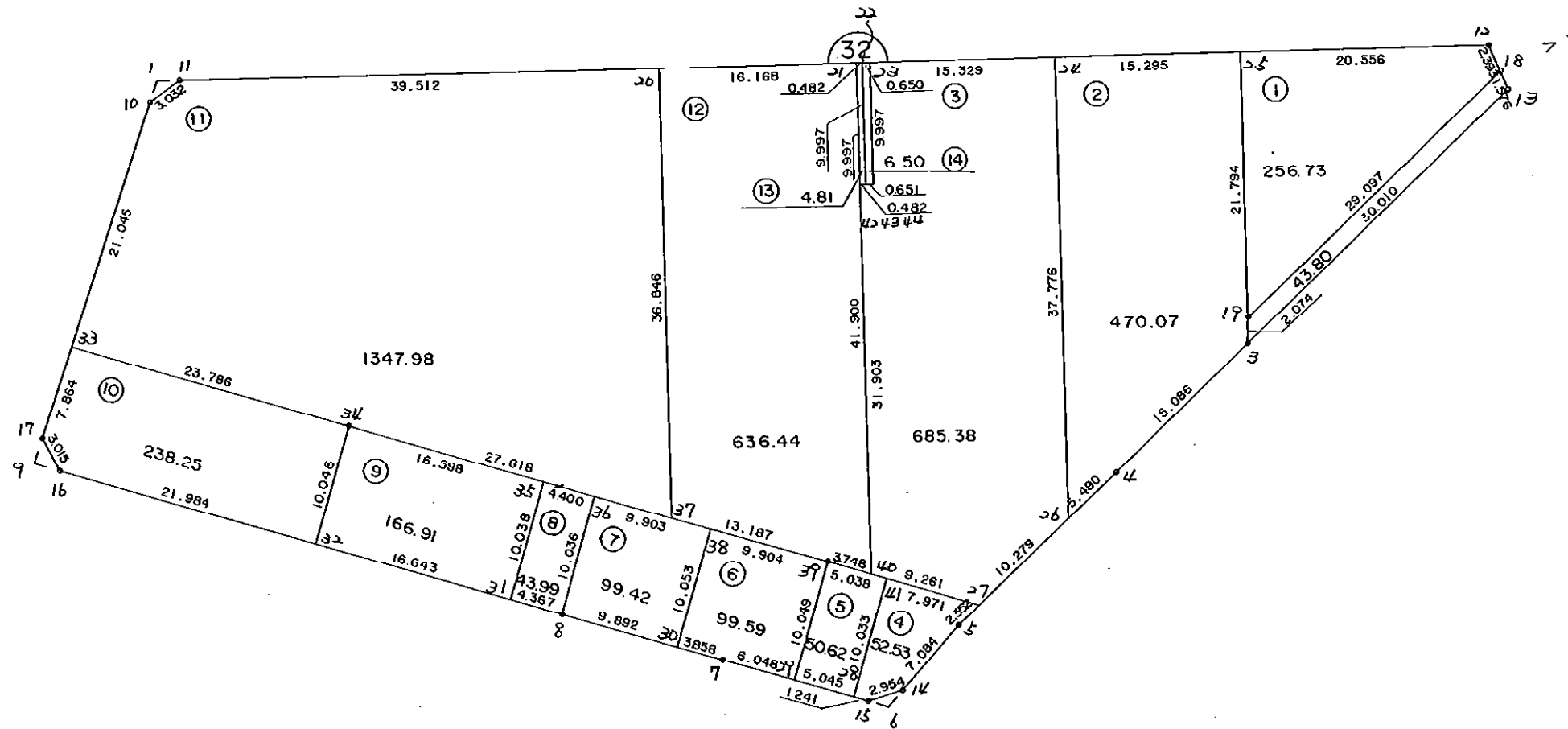


3 2 B L O C K



* * * 各筆面積 集計表 * * *

街区名・筆名	各筆面積	隔切面積
32 BLOCK	4203.06	
1 LOT	256.73	
2 LOT	470.07	
3 LOT	685.38	
4 LOT	52.53	
5 LOT	50.62	
6 LOT	99.59	
7 LOT	99.42	
8 LOT	43.99	
9 LOT	166.91	
10 LOT	238.25	
11 LOT	1347.98	
12 LOT	636.44	
13 LOT	4.81	
14 LOT	6.50	
入口	43.80	
1 スミキリ		1.62
2 スミキリ		1.37
3 スミキリ		2.36
合計 =	4203.02	5.35

* * * * * 各 筆 面 積 計 算 書 * * * * *

32 BLOCK

点 名	X	Y	(X-X0)*(YN-1-Y0)	(XN-1-X0)*(Y-Y0)
X0·Y0	- 151000.000	- 38600.000		
32-10	- 151097.935	- 38782.407		
32-11	- 151095.919	- 38780.142	+ 17496.297033	+ 17642.206770
32-12	- 151082.785	- 38672.952	+ 14913.055470	+ 6997.482888
32-18	- 151084.868	- 38671.775	+ 6191.290336	+ 5941.893375
32-13	- 151086.241	- 38671.002	+ 6189.947775	+ 6025.797736
32-3	- 151108.989	- 38690.576	+ 7738.436978	+ 7811.364816
32-4	- 151120.488	- 38700.342	+ 10913.321088	+ 10936.174238
32-5	- 151134.193	- 38712.197	+ 13465.194006	+ 13518.392136
32-14	- 151139.934	- 38716.347	+ 15700.174998	+ 15612.952971
32-15	- 151141.058	- 38719.079	+ 16411.675126	+ 16663.200786
32-7	- 151138.861	- 38731.216	+ 16535.429019	+ 18509.066528
32-8	- 151136.366	- 38744.738	+ 17893.401056	+ 20098.463418
32-16	- 151128.657	- 38787.035	+ 18621.556866	+ 25505.214810
32-17	- 151126.149	- 38788.709	+ 23594.278215	+ 24278.733813
32-10	- 151097.935	- 38782.407	+ 18481.215915	+ 23010.460643
			+204145.273881	+212551.404928
		倍面積	= 8406.131047	
		面積	= 4203.065523	

1 LOT

点 名	X	Y	(X-X0)*(YN-1-Y0)	(XN-1-X0)*(Y-Y0)
X0·Y0	- 151000.000	- 38600.000		
32-25	- 151085.285	- 38693.355		
32-12	- 151082.785	- 38672.952	+ 7728.393675	+ 6221.711320
32-18	- 151084.868	- 38671.775	+ 6191.290336	+ 5941.893375
32-19	- 151106.923	- 38690.755	+ 7674.398325	+ 7702.195340
32-25	- 151085.285	- 38693.355	+ 7740.040175	+ 9981.796665
			+ 29334.122511	+ 29847.596700
		倍面積	= 513.474189	
		面積	= 256.737094	

2 LOT

点 名	X	Y	(X-X0)*(YN-1-Y0)	(XN-1-X0)*(Y-Y0)
X0·Y0	- 151000.000	- 38600.000		
32-3	- 151108.989	- 38690.576		
32-4	- 151120.488	- 38700.342	+ 10913.321088	+ 10936.174238
32-26	- 151124.640	- 38703.934	+ 12506.626880	+ 12522.799792
32-24	- 151087.145	- 38708.536	+ 9057.328430	+ 13527.927040
32-25	- 151085.285	- 38693.355	+ 9256.492760	+ 8135.421475
32-19	- 151106.923	- 38690.755	+ 9981.796665	+ 7740.040175
32-3	- 151108.989	- 38690.576	+ 9891.296695	+ 9684.657648

* * * * * 各 筆 面 積 計 算 書 * * * * *

点 名	X	Y	(X-X0)*(YN-1-Y0)	(XN-1-X0)*(Y-Y0)
			+ 61606.862518	+ 62547.020368
		倍面積	= 940.157850	
		面積	= 470.078925	

3 LOT

点 名	X	Y	(X-X0)*(YN-1-Y0)	(XN-1-X0)*(Y-Y0)
X0·Y0	- 151000.000	- 38700.000		
32-26	- 151124.640	- 38703.934		
32-27	- 151132.414	- 38710.658	+ 520.916676	+ 1328.413120
32-40	- 151130.734	- 38719.765	+ 1393.362972	+ 2617.162710
32-42	- 151099.069	- 38723.655	+ 1958.098785	+ 3092.512770
32-44	- 151098.931	- 38722.530	+ 2340.212805	+ 2232.024570
32-23	- 151089.009	- 38723.751	+ 2005.372770	+ 2349.710181
32-24	- 151087.145	- 38708.536	+ 2069.780895	+ 759.780824
32-26	- 151124.640	- 38703.934	+ 1063.927040	+ 342.828430
			+ 11351.671943	+ 12722.432605
		倍面積	= 1370.760662	
		面積	= 685.380331	

4 LOT

点 名	X	Y	(X-X0)*(YN-1-Y0)	(XN-1-X0)*(Y-Y0)
X0·Y0	- 151100.000	- 38700.000		
32-27	- 151132.414	- 38710.658		
32-5	- 151134.193	- 38712.197	+ 364.428994	+ 395.353558
32-14	- 151139.934	- 38716.347	+ 487.074998	+ 558.952971
32-15	- 151141.058	- 38719.079	+ 671.175126	+ 761.900786
32-28	- 151140.837	- 38720.300	+ 779.129123	+ 833.477400
32-41	- 151130.968	- 38718.496	+ 628.650400	+ 755.321152
32-27	- 151132.414	- 38710.658	+ 599.529344	+ 330.056944
			+ 3529.987985	+ 3635.062811
		倍面積	= 105.074826	
		面積	= 52.537413	

5 LOT

点 名	X	Y	(X-X0)*(YN-1-Y0)	(XN-1-X0)*(Y-Y0)
X0·Y0	- 151100.000	- 38700.000		
32-28	- 151140.837	- 38720.300		
32-29	- 151139.938	- 38725.265	+ 810.741400	+ 1031.746805
32-39	- 151130.054	- 38723.451	+ 759.314310	+ 936.586038
32-41	- 151130.968	- 38718.496	+ 726.230568	+ 555.878784
32-28	- 151140.837	- 38720.300	+ 755.321152	+ 628.650400
			+ 3051.607430	+ 3152.862027
		倍面積	= 101.254597	
		面積	= 50.627298	

* * * * * 各 筆 面 積 計 算 書 * * * * *

6 LOT

点 名	X	Y	(X-XD)*(YN-1-YD)	(XN-1-XD)*(Y-YD)
XD·YD	- 151100.000	- 38700.000		
32-29	- 151139.938	- 38725.265		
32-7	- 151138.861	- 38731.216	+ 981.823165	+ 1246.704608
32-30	- 151138.161	- 38735.010	+ 1191.233776	+ 1360.523610
32-38	- 151128.273	- 38733.194	+ 989.837730	+ 1266.716234
32-39	- 151130.054	- 38723.451	+ 997.612476	+ 663.030123
32-29	- 151139.938	- 38725.265	+ 936.586038	+ 759.314310
			+ 5097.093185	+ 5296.288885
		倍面積	= 199.195700	
		面積	= 99.597850	

7 LOT

点 名	X	Y	(X-XD)*(YN-1-YD)	(XN-1-XD)*(Y-YD)
XD·YD	- 151100.000	- 38700.000		
32-30	- 151138.161	- 38735.010		
32-8	- 151136.366	- 38744.738	+ 1273.173660	+ 1707.246818
32-36	- 151126.493	- 38742.936	+ 1185.243834	+ 1561.410576
32-38	- 151128.273	- 38733.194	+ 1213.929528	+ 879.408642
32-30	- 151138.161	- 38735.010	+ 1266.716234	+ 989.837730
			+ 4939.063256	+ 5137.903766
		倍面積	= 198.840510	
		面積	= 99.420255	

8 LOT

点 名	X	Y	(X-XD)*(YN-1-YD)	(XN-1-XD)*(Y-YD)
XD·YD	- 151100.000	- 38700.000		
32-8	- 151136.366	- 38744.738		
32-31	- 151135.583	- 38749.034	+ 1591.912254	+ 1783.170444
32-35	- 151125.702	- 38747.263	+ 1260.271868	+ 1681.759329
32-36	- 151126.493	- 38742.936	+ 1252.138659	+ 1103.541072
32-8	- 151136.366	- 38744.738	+ 1561.410576	+ 1185.243834
			+ 5665.733357	+ 5753.714679
		倍面積	= 87.981322	
		面積	= 43.990661	

9 LOT

点 名	X	Y	(X-XD)*(YN-1-YD)	(XN-1-XD)*(Y-YD)
XD·YD	- 151100.000	- 38700.000		
32-31	- 151135.583	- 38749.034		
32-32	- 151132.599	- 38765.407	+ 1598.459366	+ 2327.377281

* * * * * 各 筆 面 積 計 算 書 * * * * *

点 名	X	Y	(X-X0)*(YN-1-Y0)	(XN-1-X0)*(Y-Y0)
32-34	- 151122.718	- 38763.591	+ 1485.916226	+ 2073.003009
32-35	- 151125.702	- 38747.263	+ 1634.415882	+ 1073.720834
32-31	- 151135.583	- 38749.034	+ 1681.759329	+ 1260.271868
			+ 6400.550803	+ 6734.372992
		倍面積	= 333.822189	
		面積	= 166.911094	

10 LOT

点 名	X	Y	(X-X0)*(YN-1-Y0)	(XN-1-X0)*(Y-Y0)
X0-Y0	- 151100.000	- 38700.000		
32-32	- 151132.599	- 38765.407		
32-16	- 151128.657	- 38787.035	+ 1874.368399	+ 2837.253965
32-17	- 151126.149	- 38788.709	+ 2275.878215	+ 2542.133813
32-33	- 151118.474	- 38786.995	+ 1638.810066	+ 2274.832255
32-34	- 151122.718	- 38763.591	+ 1976.352410	+ 1174.780134
32-32	- 151132.599	- 38765.407	+ 2073.003009	+ 1485.916226
			+ 9838.412099	+ 10314.916393
		倍面積	= 476.504294	
		面積	= 238.252147	

11 LOT

点 名	X	Y	(X-X0)*(YN-1-Y0)	(XN-1-X0)*(Y-Y0)
X0-Y0	- 151000.000	- 38700.000		
32-33	- 151118.474	- 38786.995		
32-10	- 151097.935	- 38782.407	+ 8519.855325	+ 9763.086918
32-11	- 151095.919	- 38780.142	+ 7904.397033	+ 7848.706770
32-20	- 151091.113	- 38740.923	+ 7301.978046	+ 3925.293237
32-37	- 151127.683	- 38736.424	+ 5225.171409	+ 3318.699912
32-34	- 151122.718	- 38763.591	+ 4469.880432	+ 8119.489653
32-33	- 151118.474	- 38786.995	+ 7533.880134	+ 10675.852410
			+ 40955.162379	+ 43651.128900
		倍面積	= 2695.966521	
		面積	= 1347.983260	

12 LOT

点 名	X	Y	(X-X0)*(YN-1-Y0)	(XN-1-X0)*(Y-Y0)
X0-Y0	- 151000.000	- 38700.000		
32-20	- 151091.113	- 38740.923		
32-21	- 151089.147	- 38724.874	+ 3648.162681	+ 2266.344762
32-40	- 151130.734	- 38719.765	+ 3251.877516	+ 1761.990455
32-39	- 151130.054	- 38723.451	+ 2570.517310	+ 3065.843034
32-37	- 151127.683	- 38736.424	+ 2994.294033	+ 4737.086896

* * * * * 各 筆 面 積 計 算 書 * * * * *

点 名	X	Y	(X-X0)*(Yn-1-Y0)	(Xn-1-X0)*(Y-Y0)
32-20	- 151091.113	- 38740.923	+ 3318.699912	+ 5225.171409
			+ 15783.551452	+ 17056.436556
		倍面積	= 1272.885104	
		面積	= 636.442552	

13 LOT

点 名	X	Y	(X-X0)*(Yn-1-Y0)	(Xn-1-X0)*(Y-Y0)
X0-Y0	- 151000.000	- 38700.000		
32-21	- 151089.147	- 38724.874		
32-22	- 151089.088	- 38724.396	+ 2215.974912	+ 2174.830212
32-43	- 151099.010	- 38723.177	+ 2415.447960	+ 2064.792576
32-42	- 151099.069	- 38723.655	+ 2296.122213	+ 2342.081550
32-21	- 151089.147	- 38724.874	+ 2108.772285	+ 2464.242306
			+ 9036.317370	+ 9045.946644
		倍面積	= 9.629274	
		面積	= 4.814637	

14 LOT

点 名	X	Y	(X-X0)*(Yn-1-Y0)	(Xn-1-X0)*(Y-Y0)
X0-Y0	- 151000.000	- 38700.000		
32-22	- 151089.088	- 38724.396		
32-23	- 151089.009	- 38723.751	+ 2171.463564	+ 2115.929088
32-44	- 151098.931	- 38722.530	+ 2349.710181	+ 2005.372770
32-43	- 151099.010	- 38723.177	+ 2230.695300	+ 2292.923787
32-22	- 151089.088	- 38724.396	+ 2064.792576	+ 2415.447960
			+ 8816.661621	+ 8829.673605
		倍面積	= 13.011984	
		面積	= 6.505992	

110

点 名	X	Y	(X-X0)*(Yn-1-Y0)	(Xn-1-X0)*(Y-Y0)
X0-Y0	- 151000.000	- 38600.000		
32-18	- 151084.868	- 38671.775		
32-13	- 151086.241	- 38671.002	+ 6189.947775	+ 6025.797736
32-3	- 151108.989	- 38690.576	+ 7738.436978	+ 7811.364816
32-19	- 151106.923	- 38690.755	+ 9684.657648	+ 9891.296695
32-18	- 151084.868	- 38671.775	+ 7702.195340	+ 7674.398325
			+ 31315.237741	+ 31402.857572
		倍面積	= 87.619831	
		面積	= 43.809915	

* * * * * 各 筆 面 積 計 算 書 * * * * *

1 区画

点 名	X	Y	(X-X0)*(YN-1-Y0)	(XN-1-X0)*(Y-Y0)
X0・Y0	- 151000.000	- 38700.000		
32-1	- 151096.148	- 38782.008		
32-10	- 151097.935	- 38782.407	+ 8031.453480	+ 7923.268236
32-11	- 151095.919	- 38780.142	+ 7904.397033	+ 7848.706770
32-1	- 151096.148	- 38782.008	+ 7705.493016	+ 7866.125352
			+ 23641.343529	+ 23638.100358
		倍面積	= 3.243171	
		面積	= 1.621585	

2 区画

点 名	X	Y	(X-X0)*(YN-1-Y0)	(XN-1-X0)*(Y-Y0)
X0・Y0	- 151100.000	- 38700.000		
32-6	- 151141.365	- 38717.382		
32-14	- 151139.934	- 38716.347	+ 694.132788	+ 676.193655
32-15	- 151141.058	- 38719.079	+ 671.175126	+ 761.900786
32-6	- 151141.365	- 38717.382	+ 789.202835	+ 713.670156
			+ 2154.510749	+ 2151.764597
		倍面積	= 2.746152	
		面積	= 1.373076	

3 区画

点 名	X	Y	(X-X0)*(YN-1-Y0)	(XN-1-X0)*(Y-Y0)
X0・Y0	- 151100.000	- 38700.000		
32-9	- 151128.266	- 38789.182		
32-16	- 151128.657	- 38787.035	+ 2555.688574	+ 2460.131310
32-17	- 151126.149	- 38788.709	+ 2275.878215	+ 2542.133813
32-9	- 151128.266	- 38789.182	+ 2507.448594	+ 2332.020118
			+ 7339.015383	+ 7334.285241
		倍面積	= 4.730142	
		面積	= 2.365071	