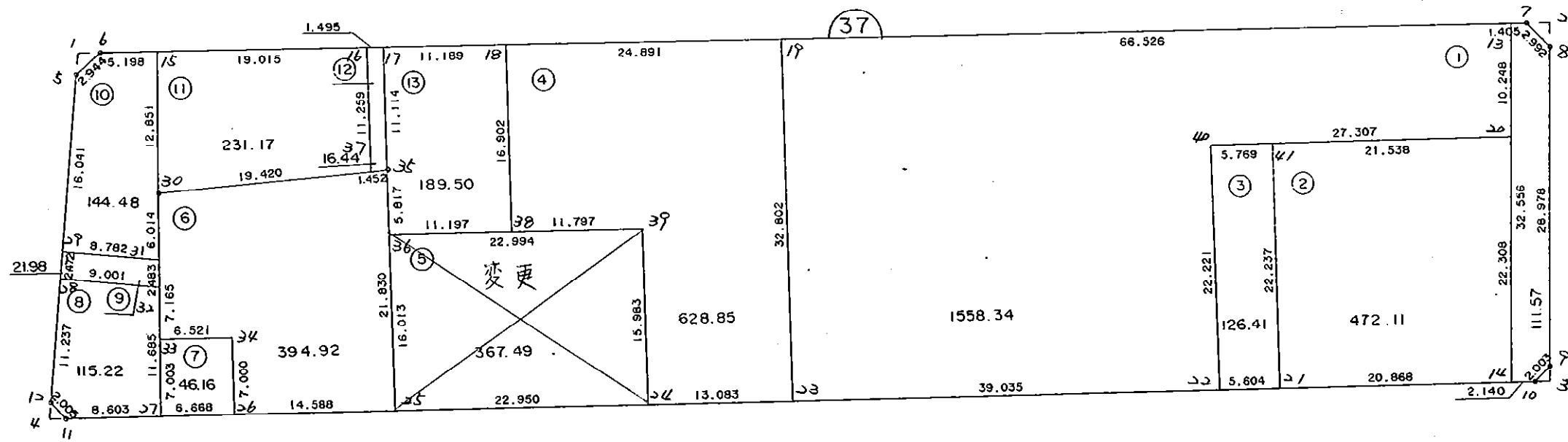


3 7 B L O C K



\* \* \* 各筆面積 集計表 \* \* \*

街区名・筆名	各筆面積	隔切面積
37 BLOCK	4424.77	
1 LOT	1558.34	
2 LOT	472.11	
3 LOT	126.41	
4 LOT	628.85	
5 LOT	367.49	{ 5-1LOT 112.95m <sup>2</sup> { 5-2LOT 254.54m <sup>2</sup>
6 LOT	394.92	
7 LOT	46.16	
8 LOT	115.22	
9 LOT	21.98	
10 LOT	144.48	
11 LOT	231.17	
12 LOT	16.44	
13 LOT	189.50	
スロ	111.57	
1 スキリ		1.94
2 スキリ		2.30
3 スキリ		0.97
4 スキリ		1.12
合計 =	4424.64	6.33

\* \* \* \* \* 各 筆 面 積 計 算 書 \* \* \* \* \*

37 BLOCK

点 名	X	Y	(X-X0)*(YN-1-Y0)	(XN-1-X0)*(Y-Y0)
X0·Y0	- 150800.000	- 38800.000		
37-5	- 150847.616	- 39034.891		
37-6	- 150845.423	- 39032.927	+ 10669.453893	+ 11091.052032
37-7	- 150831.793	- 38903.926	+ 7405.448111	+ 4720.630698
37-8	- 150833.730	- 38901.645	+ 3505.423980	+ 3231.599485
37-9	- 150862.621	- 38899.396	+ 6365.111545	+ 3352.627080
37-10	- 150864.166	- 38900.670	+ 6377.843736	+ 6304.056070
37-11	- 150878.720	- 39033.413	+ 7924.742400	+ 14977.178558
37-12	- 150877.366	- 39034.892	+ 18058.230158	+ 18490.698240
37-5	- 150847.616	- 39034.891	+ 11184.617472	+ 18172.577106
			+ 71490.871295	+ 80340.419269
		倍面積	= 8849.547974	
		面積	= 4424.773987	

1 LOT

点 名	X	Y	(X-X0)*(YN-1-Y0)	(XN-1-X0)*(Y-Y0)
X0·Y0	- 150800.000	- 38900.000		
37-19	- 150838.931	- 38971.481		
37-13	- 150831.941	- 38905.323	+ 2283.174621	+ 207.229713
37-20	- 150842.158	- 38904.528	+ 224.407034	+ 144.628848
37-40	- 150845.210	- 38931.664	+ 204.710880	+ 1334.890912
37-22	- 150867.284	- 38929.112	+ 2130.480576	+ 1316.153520
37-23	- 150871.538	- 38967.914	+ 2082.614256	+ 4569.525576
37-19	- 150838.931	- 38971.481	+ 2643.959934	+ 5113.607778
			+ 9569.347301	+ 12686.036347
		倍面積	= 3116.689046	
		面積	= 1558.344523	

2 LOT

点 名	X	Y	(X-X0)*(YN-1-Y0)	(XN-1-X0)*(Y-Y0)
X0·Y0	- 150800.000	- 38900.000		
37-20	- 150842.158	- 38904.528		
37-14	- 150864.399	- 38902.797	+ 291.598672	+ 117.915926
37-21	- 150866.673	- 38923.541	+ 186.484381	+ 1516.016859
37-41	- 150844.565	- 38925.931	+ 1049.104665	+ 1728.897563
37-20	- 150842.158	- 38904.528	+ 1093.199098	+ 201.790320
			+ 2620.386816	+ 3564.620668
		倍面積	= 944.233852	
		面積	= 472.116926	

\* \* \* \* \* 各 筆 面 積 計 算 書 \* \* \* \* \*

3 LOT

点 名	X	Y	(X-X0)*(YN-1-Y0)	(XN-1-X0)*(Y-Y0)
X0·Y0	- 150800.000	- 38900.000		
37-21	- 150866.673	- 38923.541		
37-22	- 150867.284	- 38929.112	+ 1583.932644	+ 1940.984376
37-40	- 150845.210	- 38931.664	+ 1316.153520	+ 2130.480576
37-41	- 150844.565	- 38925.931	+ 1411.106160	+ 1172.340510
37-21	- 150866.673	- 38923.541	+ 1728.897563	+ 1049.104665
			+ 6040.089887	+ 6292.910127
		倍面積	= 252.820240	
		面積	= 126.410120	

4 LOT

点 名	X	Y	(X-X0)*(YN-1-Y0)	(XN-1-X0)*(Y-Y0)
X0·Y0	- 150800.000	- 38900.000		
37-23	- 150871.538	- 38967.914		
37-24	- 150872.964	- 38980.919	+ 4955.277096	+ 5788.783422
37-39	- 150857.076	- 38982.662	+ 4618.532844	+ 6031.350168
37-38	- 150858.347	- 38994.390	+ 4823.079714	+ 5387.403640
37-18	- 150841.546	- 38996.234	+ 3921.526940	+ 5614.965198
37-19	- 150838.931	- 38971.481	+ 3746.485854	+ 2969.749626
37-23	- 150871.538	- 38967.914	+ 5113.607778	+ 2643.959934
			+ 27178.510226	+ 28436.211988
		倍面積	= 1257.701762	
		面積	= 628.850881	

~~5 LOT~~

点 名	X	Y	(X-X0)*(YN-1-Y0)	(XN-1-X0)*(Y-Y0)
X0·Y0	- 150800.000	- 38900.000		
37-24	- 150872.964	- 38980.919		
37-25	- 150875.465	- 39003.732	+ 6106.552335	+ 7568.701648
37-36	- 150859.553	- 39005.522	+ 6177.551796	+ 7963.217730
37-39	- 150857.076	- 38982.662	+ 6022.773672	+ 4922.770086
37-24	- 150872.964	- 38980.919	+ 6031.350168	+ 4618.532844
			+ 24338.227971	+ 25073.222308
		倍面積	= 734.994337	
		面積	= 367.497168	

6 LOT

点 名	X	Y	(X-X0)*(YN-1-Y0)	(XN-1-X0)*(Y-Y0)
X0·Y0	- 150800.000	- 39000.000		
37-25	- 150875.465	- 39003.732		
37-26	- 150877.055	- 39018.233	+ 287.569260	+ 1375.953345

\* \* \* \* \* 各 筆 面 積 計 算 書 \* \* \* \* \*

点 名	X	Y	(X-X0)*(YN-1-Y0)	(XN-1-X0)*(Y-Y0)
37-34	- 150870.097	- 39018.996	+ 1278.078601	+ 1463.736780
37-33	- 150870.806	- 39025.478	+ 1345.030776	+ 1785.931366
37-31	- 150863.669	- 39026.110	+ 1622.158782	+ 1848.744660
37-30	- 150857.682	- 39026.674	+ 1506.077020	+ 1698.306906
37-37	- 150854.068	- 39007.593	+ 1442.209832	+ 437.979426
37-35	- 150853.772	- 39006.172	+ 408.290796	+ 333.707696
37-25	- 150875.465	- 39003.732	+ 465.769980	+ 200.677104
			+ 8355.185047	+ 9145.037283
		倍面積	= 789.852236	
		面積	= 394.926118	

7 LOT

点 名	X	Y	(X-X0)*(YN-1-Y0)	(XN-1-X0)*(Y-Y0)
X0·Y0	- 150800.000	- 39000.000		
37-26	- 150877.055	- 39018.233		
37-27	- 150877.782	- 39024.861	+ 1418.199206	+ 1915.664355
37-33	- 150870.806	- 39025.478	+ 1760.307966	+ 1981.729796
37-34	- 150870.097	- 39018.996	+ 1785.931366	+ 1345.030776
37-26	- 150877.055	- 39018.233	+ 1463.736780	+ 1278.078601
			+ 6428.175318	+ 6520.503528
		倍面積	= 92.328210	
		面積	= 46.164105	

8 LOT

点 名	X	Y	(X-X0)*(YN-1-Y0)	(XN-1-X0)*(Y-Y0)
X0·Y0	- 150800.000	- 39000.000		
37-27	- 150877.782	- 39024.861		
37-11	- 150878.720	- 39033.413	+ 1957.057920	+ 2598.929966
37-12	- 150877.366	- 39034.892	+ 2585.030158	+ 2746.698240
37-28	- 150866.129	- 39034.892	+ 2307.373068	+ 2699.454472
37-32	- 150866.142	- 39025.891	+ 2307.826664	+ 1712.145939
37-27	- 150877.782	- 39024.861	+ 2013.853762	+ 1644.356262
			+ 11171.141572	+ 11401.584879
		倍面積	= 230.443307	
		面積	= 115.221653	

9 LOT

点 名	X	Y	(X-X0)*(YN-1-Y0)	(XN-1-X0)*(Y-Y0)
X0·Y0	- 150800.000	- 39000.000		
37-28	- 150866.129	- 39034.892		
37-29	- 150863.657	- 39034.892	+ 2221.120044	+ 2307.373068
37-31	- 150863.669	- 39026.110	+ 2221.538748	+ 1662.084270

\* \* \* \* \* 各 筆 面 積 計 算 書 \* \* \* \* \*

点 名	X	Y	(X-X0)*(Yn-1-Y0)	(Xn-1-X0)*(Y-Y0)
37-32	- 150866.142	- 39025.891	+ 1726.967620	+ 1648.454079
37-28	- 150866.129	- 39034.892	+ 1712.145939	+ 2307.826664
			+ 7881.772351	+ 7925.738081
		倍面積	= 43.965730	
		面積	= 21.982865	

10 LOT

点 名	X	Y	(X-X0)*(Yn-1-Y0)	(Xn-1-X0)*(Y-Y0)
X0-Y0	- 150800.000	- 39000.000		
37-29	- 150863.657	- 39034.892		
37-5	- 150847.616	- 39034.891	+ 1661.417472	+ 2221.056387
37-6	- 150845.423	- 39032.927	+ 1584.853893	+ 1567.852032
37-15	- 150844.877	- 39027.758	+ 1477.664979	+ 1260.851634
37-30	- 150857.682	- 39026.674	+ 1601.136956	+ 1197.049098
37-31	- 150863.669	- 39026.110	+ 1698.306906	+ 1506.077020
37-29	- 150863.657	- 39034.892	+ 1662.084270	+ 2221.538748
			+ 9685.464476	+ 9974.424919
		倍面積	= 288.960443	
		面積	= 144.480221	

11 LOT

点 名	X	Y	(X-X0)*(Yn-1-Y0)	(Xn-1-X0)*(Y-Y0)
X0-Y0	- 150800.000	- 39000.000		
37-15	- 150844.877	- 39027.758		
37-16	- 150842.879	- 39008.848	+ 1190.235282	+ 397.071696
37-37	- 150854.068	- 39007.593	+ 478.393664	+ 325.580247
37-30	- 150857.682	- 39026.674	+ 437.979426	+ 1442.209832
37-15	- 150844.877	- 39027.758	+ 1197.049098	+ 1601.136956
			+ 3303.657470	+ 3765.998731
		倍面積	= 462.341261	
		面積	= 231.170630	

12 LOT

点 名	X	Y	(X-X0)*(Yn-1-Y0)	(Xn-1-X0)*(Y-Y0)
X0-Y0	- 150800.000	- 39000.000		
37-16	- 150842.879	- 39008.848		
37-17	- 150842.722	- 39007.361	+ 378.004256	+ 315.632319
37-35	- 150853.772	- 39006.172	+ 395.815692	+ 263.680184
37-37	- 150854.068	- 39007.593	+ 333.707696	+ 408.290796
37-16	- 150842.879	- 39008.848	+ 325.580247	+ 478.393664
			+ 1433.107891	+ 1465.996963
		倍面積	= 32.889072	
		面積	= 16.444536	

\* \* \* \* \* 各 筆 面 積 計 算 書 \* \* \* \* \*

13 LOT

点 名	X	Y	(X-X0)*(YN-1-Y0)	(XN-1-X0)*(Y-Y0)
X0·Y0	- 150800.000	- 38900.000		
37-17	- 150842.722	- 39007.361		
37-18	- 150841.546	- 38996.234	+ 4460.420106	+ 4111.308948
37-38	- 150858.347	- 38994.390	+ 5614.965198	+ 3921.526940
37-36	- 150859.553	- 39005.522	+ 5621.207670	+ 6156.892134
37-35	- 150853.772	- 39006.172	+ 5674.128984	+ 6322.861116
37-17	- 150842.722	- 39007.361	+ 4535.880184	+ 5773.015692
			+ 25906.602142	+ 26285.604830
		倍面積	= 379.002688	
		面積	= 189.501344	

λ10

点 名	X	Y	(X-X0)*(YN-1-Y0)	(XN-1-X0)*(Y-Y0)
X0·Y0	- 150800.000	- 38800.000		
37-13	- 150831.941	- 38905.323		
37-7	- 150831.793	- 38903.926	+ 3348.534139	+ 3319.500366
37-8	- 150833.730	- 38901.645	+ 3505.423980	+ 3231.599485
37-9	- 150862.621	- 38899.396	+ 6365.111545	+ 3352.627080
37-10	- 150864.166	- 38900.670	+ 6377.843736	+ 6304.056070
37-14	- 150864.399	- 38902.797	+ 6483.047330	+ 6596.072302
37-13	- 150831.941	- 38905.323	+ 3283.438977	+ 6782.695877
			+ 29363.399707	+ 29586.551180
		倍面積	= 223.151473	
		面積	= 111.575736	

1 スキリ

点 名	X	Y	(X-X0)*(YN-1-Y0)	(XN-1-X0)*(Y-Y0)
X0·Y0	- 150800.000	- 39000.000		
37-1	- 150845.631	- 39034.891		
37-5	- 150847.616	- 39034.891	+ 1661.369856	+ 1592.111221
37-6	- 150845.423	- 39032.927	+ 1584.853893	+ 1567.852032
37-1	- 150845.631	- 39034.891	+ 1502.491937	+ 1584.853893
			+ 4748.715686	+ 4744.817146
		倍面積	= 3.898540	
		面積	= 1.949270	

2 スキリ

点 名	X	Y	(X-X0)*(YN-1-Y0)	(XN-1-X0)*(Y-Y0)
X0·Y0	- 150800.000	- 38900.000		
37-2	- 150831.570	- 38901.813		
37-7	- 150831.793	- 38903.926	+ 57.640709	+ 123.943820



\* \* \* \* \* 各 筆 面 積 計 算 書 \* \* \* \* \*

点 名	X	Y	(X-X0)*(YN-1-Y0)	(XN-1-X0)*(Y-Y0)
37-8	- 150833.730	- 38901.645	+ 132.423980	+ 52.299485
37-2	- 150831.570	- 38901.813	+ 51.932650	+ 61.152490
			+ 241.997339	+ 237.395795
		倍面積	= 4.601544	
		面積	= 2.300772	

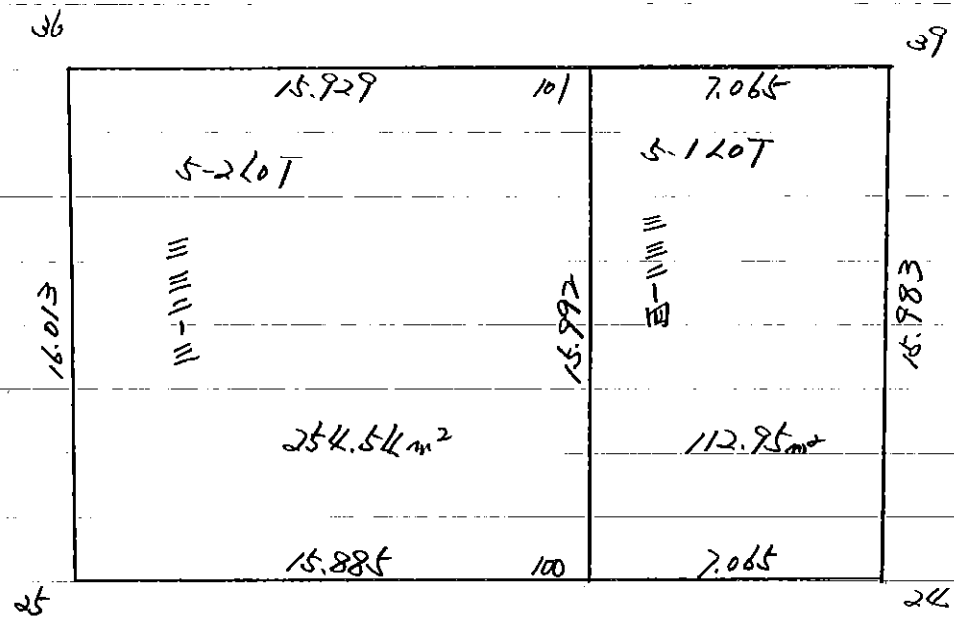
3 スミリ

点 名	X	Y	(X-X0)*(YN-1-Y0)	(XN-1-X0)*(Y-Y0)
X0-Y0	- 150800.000	- 38800.000		
37-3	- 150864.015	- 38899.288		
37-9	- 150862.621	- 38899.396	+ 6217.513848	+ 6362.834940
37-10	- 150864.166	- 38900.670	+ 6377.843736	+ 6304.056070
37-3	- 150864.015	- 38899.288	+ 6444.390050	+ 6370.913808
			+ 19039.747634	+ 19037.804818
		倍面積	= 1.942816	
		面積	= 0.971408	

4 スミリ

点 名	X	Y	(X-X0)*(YN-1-Y0)	(XN-1-X0)*(Y-Y0)
X0-Y0	- 150800.000	- 39000.000		
37-4	- 150878.882	- 39034.892		
37-11	- 150878.720	- 39033.413	+ 2746.698240	+ 2635.684266
37-12	- 150877.366	- 39034.892	+ 2585.030158	+ 2746.698240
37-4	- 150878.882	- 39034.892	+ 2752.350744	+ 2699.454472
			+ 8084.079142	+ 8081.836978
		倍面積	= 2.242164	
		面積	= 1.121082	

37 Block



\* \* \* \* 5-1 LOT

面積計算書

\* \* \* \* NO 1

点名

	X	DX	DMD.1	Y	DY	DMD.2	DX * DMD.2	DY * DMD.1
37-24	- 150872.964			- 38980.919				
37-100	- 150873.734	+ 0.770	+ 0.770	- 38987.942	+ 7.023	+ 7.023	+ 5.407710	+ 5.407710
37-101	- 150857.837	- 15.897	- 14.357	- 38989.686	+ 1.744	+ 15.790	- 251.013630	- 25.038608
37-39	- 150857.076	- 0.761	- 31.015	- 38982.662	- 7.024	+ 10.510	+ 7.998110	+ 217.849360
37-24	- 150872.964	+ 15.888	- 15.888	- 38980.919	- 1.743	+ 1.743	+ 27.692784	+ 27.692784
		+ 16.658			+ 8.767		+ 33.100494	+ 250.949854
		- 16.658			- 8.767		- 259.011740	- 25.038608
							- 225.911246	+ 225.911246

面積 = 112.955623

