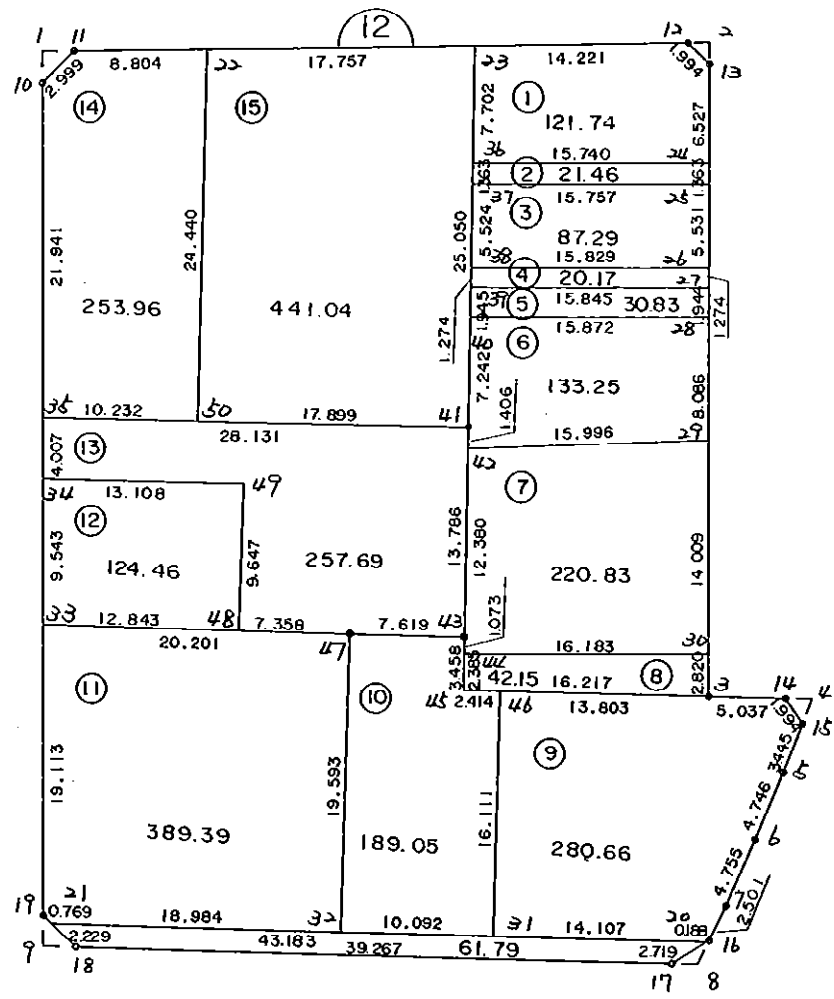


1 2 B L O C K



* * * 各筆面積 集計表 * * *

街区名・筆名	各筆面積	隅切面積
12 BLOCK	2675.84	
1 LOT	121.74	
2 LOT	21.46	
3 LOT	87.29	
4 LOT	20.17	
5 LOT	30.83	
6 LOT	133.25	
7 LOT	220.83	
8 LOT	42.15	
9 LOT	280.66	
10 LOT	189.05	
11 LOT	389.39	
12 LOT	124.46	
13 LOT	257.69	
14 LOT	253.96	
15 LOT	441.04	
入口	61.79	
1 入り		2.23
2 入り		1.00
4 入り		1.41
8 入り		1.36
9 入り		2.16
合計 =	2675.76	8.16

* * * * * 各 筆 面 積 計 算 書 * * * * *

12 BLOCK

点 名	X	Y	(X-X0)*(YN-1-Y0)	(XN-1-X0)*(Y-Y0)
X0·Y0	- 150700.000	- 38500.000		
12-10	- 150733.610	- 38624.404		
12-11	- 150731.219	- 38622.593	+ 3883.768476	+ 4120.350730
12-12	- 150725.887	- 38582.161	+ 3173.564991	+ 2564.984259
12-13	- 150727.113	- 38580.589	+ 2227.631193	+ 2086.207443
12-3	- 150768.389	- 38575.789	+ 5511.401121	+ 2054.867157
12-14	- 150767.950	- 38570.771	+ 5149.862550	+ 4839.957919
12-15	- 150769.468	- 38569.478	+ 4916.319828	+ 4721.030100
12-5	- 150772.799	- 38570.357	+ 5057.928922	+ 4887.560076
12-6	- 150777.359	- 38571.671	+ 5442.747163	+ 5217.577129
12-7	- 150781.905	- 38573.064	+ 5870.213255	+ 5652.157976
12-16	- 150784.268	- 38573.882	+ 6156.957152	+ 6051.305210
12-17	- 150786.077	- 38576.157	+ 6359.540914	+ 6417.598076
12-18	- 150789.611	- 38615.265	+ 6824.504927	+ 9921.665405
12-19	- 150787.795	- 38617.650	+ 10119.690675	+ 10542.734150
12-10	- 150733.610	- 38624.404	+ 3954.216500	+ 10922.049180
			+ 74648.347667	+ 80000.044810
		倍面積	= 5351.697143	
		面積	= 2675.848571	

1 LOT

点 名	X	Y	(X-X0)*(YN-1-Y0)	(XN-1-X0)*(Y-Y0)
X0·Y0	- 150700.000	- 38500.000		
12-23	- 150727.746	- 38596.260		
12-12	- 150725.887	- 38582.161	+ 2491.882620	+ 2279.639106
12-13	- 150727.113	- 38580.589	+ 2227.631193	+ 2086.207443
12-24	- 150733.596	- 38579.835	+ 2707.468044	+ 2164.566355
12-36	- 150735.407	- 38595.470	+ 2826.717845	+ 3207.410120
12-23	- 150727.746	- 38596.260	+ 2648.910620	+ 3408.277820
			+ 12902.610322	+ 13146.100844
		倍面積	= 243.490522	
		面積	= 121.745261	

2 LOT

点 名	X	Y	(X-X0)*(YN-1-Y0)	(XN-1-X0)*(Y-Y0)
X0·Y0	- 150700.000	- 38500.000		
12-24	- 150733.596	- 38579.835		
12-25	- 150734.950	- 38579.678	+ 2790.233250	+ 2676.862088
12-37	- 150736.763	- 38595.330	+ 2929.202314	+ 3331.783500
12-36	- 150735.407	- 38595.470	+ 3375.349310	+ 3509.763610
12-24	- 150733.596	- 38579.835	+ 3207.410120	+ 2826.717845
			+ 12302.194994	+ 12345.127043
		倍面積	= 42.932049	
		面積	= 21.466024	

* * * * * 各 筆 面 積 計 算 書 * * * * *

3 LOT

点 名	X	Y	(X-X0)*(YN-1-Y0)	(XN-1-X0)*(Y-Y0)
X0·Y0	- 150700.000	- 38500.000		
12-25	- 150734.950	- 38579.678		
12-26	- 150740.444	- 38579.039	+ 3222.497032	+ 2762.413050
12-38	- 150742.258	- 38594.764	+ 3340.030062	+ 3832.635216
12-37	- 150736.763	- 38595.330	+ 3483.808932	+ 4028.455140
12-25	- 150734.950	- 38579.678	+ 3331.783500	+ 2929.202314
			+ 13378.119526	+ 13552.705720
		倍面積	= 174.586194	
		面積	= 87.293097	

4 LOT

点 名	X	Y	(X-X0)*(YN-1-Y0)	(XN-1-X0)*(Y-Y0)
X0·Y0	- 150700.000	- 38500.000		
12-26	- 150740.444	- 38579.039		
12-27	- 150741.709	- 38578.892	+ 3296.637651	+ 3190.708048
12-39	- 150743.525	- 38594.633	+ 3433.774300	+ 3947.047797
12-38	- 150742.258	- 38594.764	+ 3999.001314	+ 4124.603100
12-26	- 150740.444	- 38579.039	+ 3832.635216	+ 3340.030062
			+ 14562.048481	+ 14602.389007
		倍面積	= 40.340526	
		面積	= 20.170263	

5 LOT

点 名	X	Y	(X-X0)*(YN-1-Y0)	(XN-1-X0)*(Y-Y0)
X0·Y0	- 150700.000	- 38500.000		
12-27	- 150741.709	- 38578.892		
12-28	- 150743.640	- 38578.667	+ 3442.846880	+ 3281.121903
12-40	- 150745.460	- 38594.434	+ 3576.201820	+ 4121.099760
12-39	- 150743.525	- 38594.633	+ 4110.239850	+ 4302.016180
12-27	- 150741.709	- 38578.892	+ 3947.047797	+ 3433.774300
			+ 15076.336347	+ 15138.012143
		倍面積	= 61.675796	
		面積	= 30.837898	

6 LOT

点 名	X	Y	(X-X0)*(YN-1-Y0)	(XN-1-X0)*(Y-Y0)
X0·Y0	- 150700.000	- 38500.000		
12-28	- 150743.640	- 38578.667		
12-29	- 150751.673	- 38577.733	+ 4064.959891	+ 3392.268120
12-42	- 150754.063	- 38593.549	+ 4202.479179	+ 4833.957477

* * * * * 各 筆 面 積 計 算 書 * * * * *

点 名	X	Y	(X-X0)*(Yn-1-Y0)	(Xn-1-X0)*(Y-Y0)
12-41	- 150752.664	- 38593.691	+ 4926.664536	+ 5065.216533
12-40	- 150745.460	- 38594.434	+ 4259.192860	+ 4973.272176
12-28	- 150743.640	- 38578.667	+ 4121.099760	+ 3576.201820
			+ 21574.396226	+ 21840.916126
		倍面積	= 266.519900	
		面積	= 133.259950	

7 LOT

点 名	X	Y	(X-X0)*(Yn-1-Y0)	(Xn-1-X0)*(Y-Y0)
X0-Y0	- 150700.000	- 38500.000		
12-29	- 150751.673	- 38577.733		
12-30	- 150765.588	- 38576.115	+ 5098.352004	+ 3933.090395
12-44	- 150767.447	- 38592.191	+ 5133.728405	+ 6046.623308
12-43	- 150766.380	- 38592.302	+ 6119.638580	+ 6225.492994
12-42	- 150754.063	- 38593.549	+ 4990.123026	+ 6209.782620
12-29	- 150751.673	- 38577.733	+ 4833.957477	+ 4202.479179
			+ 26175.799492	+ 26617.468496
		倍面積	= 441.669004	
		面積	= 220.834502	

8 LOT

点 名	X	Y	(X-X0)*(Yn-1-Y0)	(Xn-1-X0)*(Y-Y0)
X0-Y0	- 150700.000	- 38500.000		
12-30	- 150765.588	- 38576.115		
12-3	- 150768.389	- 38575.789	+ 5205.428735	+ 4970.848932
12-45	- 150769.819	- 38591.943	+ 5291.512191	+ 6287.889827
12-44	- 150767.447	- 38592.191	+ 6201.279521	+ 6436.683429
12-30	- 150765.588	- 38576.115	+ 6046.623308	+ 5133.728405
			+ 22744.843755	+ 22829.150593
		倍面積	= 84.306838	
		面積	= 42.153419	

9 LOT

点 名	X	Y	(X-X0)*(Yn-1-Y0)	(Xn-1-X0)*(Y-Y0)
X0-Y0	- 150700.000	- 38500.000		
12-3	- 150768.389	- 38575.789		
12-14	- 150767.950	- 38570.771	+ 5149.862550	+ 4839.957919
12-15	- 150769.468	- 38569.478	+ 4916.319828	+ 4721.030100
12-5	- 150772.799	- 38570.357	+ 5057.928922	+ 4887.560076
12-6	- 150777.359	- 38571.671	+ 5442.747163	+ 5217.577129
12-7	- 150781.905	- 38573.064	+ 5870.213255	+ 5652.157976
12-16	- 150784.268	- 38573.882	+ 6156.957152	+ 6051.305210

* * * * * 各 筆 面 積 計 算 書 * * * * *

点 名	X	Y	(X-X0)*(YN-1-Y0)	(XN-1-X0)*(Y-Y0)
12-20	- 150784.385	- 38574.029	+ 6234.532570	+ 6238.275772
12-31	- 150785.651	- 38588.079	+ 6340.657879	+ 7432.546415
12-46	- 150769.606	- 38589.538	+ 6130.826874	+ 7669.019238
12-3	- 150768.389	- 38575.789	+ 6123.414282	+ 5275.369134
			+ 57423.460475	+ 57984.798969
		倍面積	= 561.338494	
		面積	= 280.669247	

10 LOT

点 名	X	Y	(X-X0)*(YN-1-Y0)	(XN-1-X0)*(Y-Y0)
X0-Y0	- 150700.000	- 38500.000		
12-31	- 150785.651	- 38588.079		
12-32	- 150786.557	- 38598.131	+ 7623.854003	+ 8405.018281
12-47	- 150767.043	- 38599.892	+ 6578.996633	+ 8646.351844
12-43	- 150766.380	- 38592.302	+ 6630.830960	+ 6188.202986
12-45	- 150769.819	- 38591.943	+ 6444.433338	+ 6103.176340
12-46	- 150769.606	- 38589.538	+ 6399.784458	+ 6251.453622
12-31	- 150785.651	- 38588.079	+ 7669.019238	+ 6130.826874
			+ 41346.918630	+ 41725.029947
		倍面積	= 378.111317	
		面積	= 189.055658	

11 LOT

点 名	X	Y	(X-X0)*(YN-1-Y0)	(XN-1-X0)*(Y-Y0)
X0-Y0	- 150700.000	- 38500.000		
12-32	- 150786.557	- 38598.131		
12-21	- 150788.261	- 38617.038	+ 8661.140191	+ 10130.458166
12-19	- 150787.795	- 38617.650	+ 10275.351210	+ 10383.906650
12-33	- 150768.829	- 38620.014	+ 8097.731850	+ 10536.629130
12-47	- 150767.043	- 38599.892	+ 8046.098602	+ 6875.466468
12-32	- 150786.557	- 38598.131	+ 8646.351844	+ 6578.996633
			+ 43726.673697	+ 44505.457047
		倍面積	= 778.783350	
		面積	= 389.391675	

12 LOT

点 名	X	Y	(X-X0)*(YN-1-Y0)	(XN-1-X0)*(Y-Y0)
X0-Y0	- 150700.000	- 38600.000		
12-33	- 150768.829	- 38620.014		
12-34	- 150759.359	- 38621.194	+ 1188.011026	+ 1458.761826
12-49	- 150758.092	- 38608.147	+ 1231.201848	+ 483.597773
12-48	- 150767.694	- 38607.221	+ 551.503018	+ 419.482332

* * * * * 各 筆 面 積 計 算 書 * * * * *

点 名	X	Y	(X-X0)*(YN-1-Y0)	(XN-1-X0)*(Y-Y0)
12-33	- 150768.829	- 38620.014	+ 497.014209	+ 1354.827716
			+ 3467.730101	+ 3716.669647
		倍面積	= 248.939546	
		面積	= 124.469773	

13 LOT

点 名	X	Y	(X-X0)*(YN-1-Y0)	(XN-1-X0)*(Y-Y0)
X0-Y0	- 150700.000	- 38500.000		
12-34	- 150759.359	- 38621.194		
12-35	- 150755.383	- 38621.690	+ 6712.087302	+ 7223.396710
12-41	- 150752.664	- 38593.691	+ 6408.682160	+ 5188.888653
12-43	- 150766.380	- 38592.302	+ 6219.208580	+ 4860.992528
12-47	- 150767.043	- 38599.892	+ 6188.202986	+ 6630.830960
12-48	- 150767.694	- 38607.221	+ 6762.089048	+ 7188.417503
12-49	- 150758.092	- 38608.147	+ 6228.682332	+ 7320.903018
12-34	- 150759.359	- 38621.194	+ 6419.497773	+ 7040.401848
			+ 44938.450181	+ 45453.831220
		倍面積	= 515.381039	
		面積	= 257.690519	

14 LOT

点 名	X	Y	(X-X0)*(YN-1-Y0)	(XN-1-X0)*(Y-Y0)
X0-Y0	- 150700.000	- 38600.000		
12-35	- 150755.383	- 38621.690		
12-10	- 150733.610	- 38624.404	+ 729.000900	+ 1351.566732
12-11	- 150731.219	- 38622.593	+ 761.868476	+ 759.350730
12-22	- 150730.068	- 38613.865	+ 679.326324	+ 432.851435
12-50	- 150754.394	- 38611.506	+ 754.172810	+ 345.962408
12-35	- 150755.383	- 38621.690	+ 637.236798	+ 1179.805860
			+ 3561.605308	+ 4069.537165
		倍面積	= 507.931857	
		面積	= 253.965928	

15 LOT

点 名	X	Y	(X-X0)*(YN-1-Y0)	(XN-1-X0)*(Y-Y0)
X0-Y0	- 150700.000	- 38500.000		
12-22	- 150730.068	- 38613.865		
12-23	- 150727.746	- 38596.260	+ 3159.298290	+ 2894.345680
12-41	- 150752.664	- 38593.691	+ 5069.436640	+ 2599.550486
12-50	- 150754.394	- 38611.506	+ 5096.228254	+ 5872.351984
12-22	- 150730.068	- 38613.865	+ 3352.762408	+ 6193.572810
			+ 16677.725592	+ 17559.820960
		倍面積	= 882.095368	
		面積	= 441.047684	

* * * * * 各 筆 面 積 計 算 書 * * * * *

入付

点 名	X	Y	(X-X0)*(YN-1-Y0)	(XN-1-X0)*(Y-Y0)
X0-Y0	- 150700.000	- 38500.000		
12-20	- 150784.385	- 38574.029		
12-17	- 150786.077	- 38576.157	+ 6372.194233	+ 6426.508445
12-18	- 150789.611	- 38615.265	+ 6824.504927	+ 9921.665405
12-21	- 150788.261	- 38617.038	+ 10173.404165	+ 10487.892218
12-20	- 150784.385	- 38574.029	+ 9876.251630	+ 6533.873569
			+ 33246.354955	+ 33369.939637
		倍面積	= 123.584682	
		面積	= 61.792341	

1 入付

点 名	X	Y	(X-X0)*(YN-1-Y0)	(XN-1-X0)*(Y-Y0)
X0-Y0	- 150700.000	- 38600.000		
12-1	- 150731.492	- 38624.668		
12-10	- 150733.610	- 38624.404	+ 829.091480	+ 768.530768
12-11	- 150731.219	- 38622.593	+ 761.868476	+ 759.350730
12-1	- 150731.492	- 38624.668	+ 711.498756	+ 770.110292
			+ 2302.458712	+ 2297.991790
		倍面積	= 4.466922	
		面積	= 2.233461	

2 入付

点 名	X	Y	(X-X0)*(YN-1-Y0)	(XN-1-X0)*(Y-Y0)
X0-Y0	- 150700.000	- 38500.000		
12-2	- 150725.701	- 38580.753		
12-12	- 150725.887	- 38582.161	+ 2090.452911	+ 2111.619861
12-13	- 150727.113	- 38580.589	+ 2227.631193	+ 2086.207443
12-2	- 150725.701	- 38580.753	+ 2071.217889	+ 2189.456089
			+ 6389.301993	+ 6387.283393
		倍面積	= 2.018600	
		面積	= 1.009300	

4 入付

点 名	X	Y	(X-X0)*(YN-1-Y0)	(XN-1-X0)*(Y-Y0)
X0-Y0	- 150700.000	- 38500.000		
12-4	- 150767.798	- 38569.037		
12-14	- 150767.950	- 38570.771	+ 4691.064150	+ 4798.132258
12-15	- 150769.468	- 38569.478	+ 4916.319828	+ 4721.030100
12-4	- 150767.798	- 38569.037	+ 4710.469444	+ 4795.862316
			+ 14317.853422	+ 14315.024674
		倍面積	= 2.828748	
		面積	= 1.414374	

* * * * * 各 筆 面 積 計 算 書 * * * * *

8 区画

点 名	X	Y	(X-X0)*(YN-1-Y0)	(XN-1-X0)*(Y-Y0)
X0-Y0	- 150700.000	- 38500.000		
12-8	- 150785.923	- 38574.454		
12-16	- 150784.268	- 38573.882	+ 6274.089672	+ 6348.163086
12-17	- 150786.077	- 38576.157	+ 6359.540914	+ 6417.598076
12-8	- 150785.923	- 38574.454	+ 6543.637911	+ 6408.776958
			+ 19177.268497	+ 19174.538120
		倍面積	= 2.730377	
		面積	= 1.365188	

9 区画

点 名	X	Y	(X-X0)*(YN-1-Y0)	(XN-1-X0)*(Y-Y0)
X0-Y0	- 150700.000	- 38600.000		
12-9	- 150789.804	- 38617.400		
12-18	- 150789.611	- 38615.265	+ 1559.231400	+ 1370.858060
12-19	- 150787.795	- 38617.650	+ 1340.190675	+ 1581.634150
12-9	- 150789.804	- 38617.400	+ 1585.040600	+ 1527.633000
			+ 4484.462675	+ 4480.125210
		倍面積	= 4.337465	
		面積	= 2.168732	