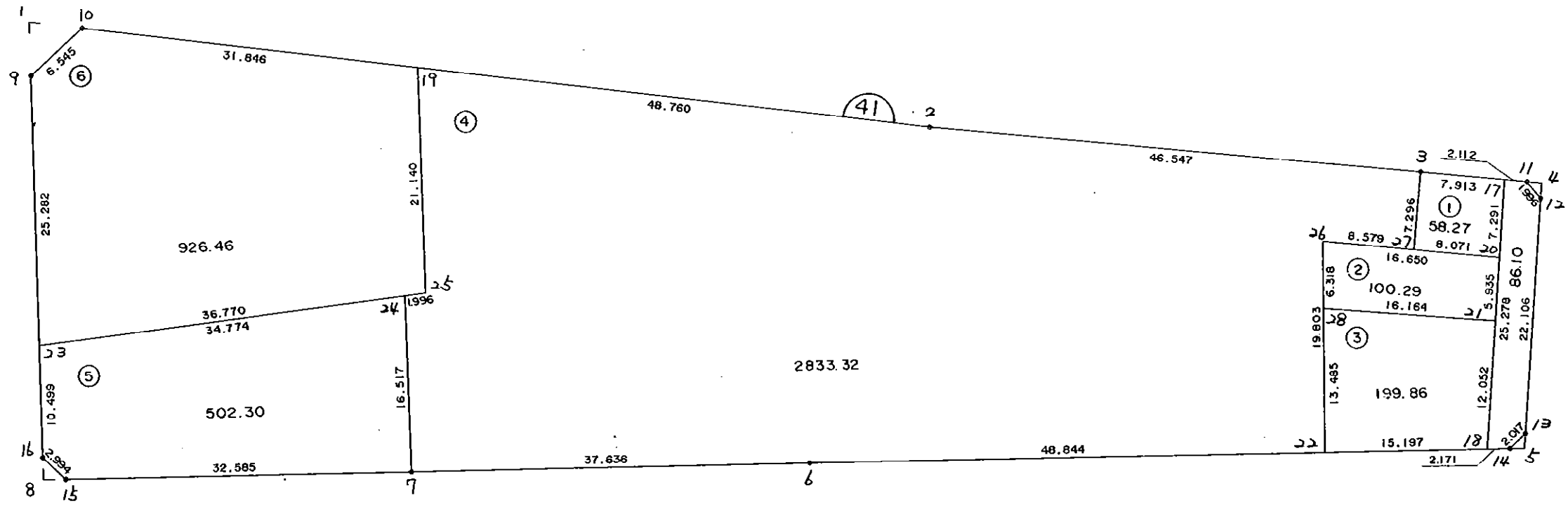


4 1 B L O C K



\* \* \* 各筆面積 集計表 \* \* \*

街区名・筆名	各筆面積	隅切面積
41 BLOCK	4706.65	
1 LOT	58.27	
2 LOT	100.29	
3 LOT	199.86	
4 LOT	2833.32	
5 LOT	502.30	
6 LOT	926.46	
スロ	86.10	
1 スキリ		12.35
4 スキリ		0.97
5 スキリ		0.92
8 スキリ		2.22
合計 =	4706.60	16.46

\* \* \* \* \* 各 筆 面 積 計 算 書 \* \* \* \* \*

41 BLOCK

点 名	X	Y	(X-X0)*(YN-1-Y0)	(XN-1-X0)*(Y-Y0)
X0·Y0	- 151000.000	- 38800.000		
41-9	- 151068.988	- 39034.528		
41-10	- 151064.831	- 39029.473	+ 15204.684768	+ 15830.883324
41-2	- 151078.734	- 38950.075	+ 18067.327182	+ 9729.512325
41-3	- 151085.625	- 38904.041	+ 12850.171875	+ 8191.564094
41-11	- 151087.145	- 38894.132	+ 9066.652945	+ 8060.052500
41-12	- 151088.738	- 38892.929	+ 8353.085416	+ 8098.297705
41-13	- 151110.666	- 38895.724	+ 10284.080714	+ 8494.356312
41-14	- 151111.981	- 38897.253	+ 10719.269244	+ 10762.600498
41-6	- 151109.481	- 38963.418	+ 10647.355693	+ 18299.711058
41-7	- 151108.121	- 39001.029	+ 17668.917578	+ 22008.855949
41-15	- 151106.942	- 39033.592	+ 21498.443318	+ 25256.200632
41-16	- 151104.752	- 39035.633	+ 24469.229184	+ 25199.064286
41-9	- 151068.988	- 39034.528	+ 16255.849404	+ 24567.277056
			+175085.067321	+184498.375739
		倍面積	= 9413.308418	
		面積	= 4706.654209	

1 LOT

点 名	X	Y	(X-X0)*(YN-1-Y0)	(XN-1-X0)*(Y-Y0)
X0·Y0	- 151000.000	- 38800.000		
41-3	- 151085.625	- 38904.041		
41-17	- 151086.825	- 38896.220	+ 9033.359825	+ 8238.837500
41-20	- 151094.057	- 38897.144	+ 9050.164540	+ 8434.527800
41-27	- 151092.840	- 38905.123	+ 9018.848960	+ 9887.554011
41-3	- 151085.625	- 38904.041	+ 9001.156875	+ 9659.166440
			+ 36103.530200	+ 36220.085751
		倍面積	= 116.555551	
		面積	= 58.277775	

2 LOT

点 名	X	Y	(X-X0)*(YN-1-Y0)	(XN-1-X0)*(Y-Y0)
X0·Y0	- 151000.000	- 38800.000		
41-20	- 151094.057	- 38897.144		
41-21	- 151099.944	- 38897.895	+ 9708.959936	+ 9207.710015
41-28	- 151097.857	- 38913.924	+ 9579.711015	+ 11386.020256
41-26	- 151091.547	- 38913.604	+ 10429.400428	+ 11116.946628
41-20	- 151094.057	- 38897.144	+ 10685.251428	+ 8893.241768
			+ 40403.322807	+ 40603.918667
		倍面積	= 200.595860	
		面積	= 100.297930	

\* \* \* \* \* 各 筆 面 積 計 算 書 \* \* \* \* \*

3 LOT

点 名	X	Y	(X-X0)*(YN-1-Y0)	(XN-1-X0)*(Y-Y0)
X0-Y0	- 151000.000	- 38800.000		
41-21	- 151099.944	- 38897.895		
41-18	- 151111.899	- 38899.422	+ 10954.352605	+ 9936.632368
41-22	- 151111.325	- 38914.608	+ 11068.154150	+ 12824.520592
41-28	- 151097.857	- 38913.924	+ 11215.195056	+ 12682.589300
41-21	- 151099.944	- 38897.895	+ 11386.020256	+ 9579.711015
			+ 44623.722067	+ 45023.453275
		倍面積	= 399.731208	
		面積	= 199.865604	

4 LOT

点 名	X	Y	(X-X0)*(YN-1-Y0)	(XN-1-X0)*(Y-Y0)
X0-Y0	- 151000.000	- 38900.000		
41-22	- 151111.325	- 38914.608		
41-6	- 151109.481	- 38963.418	+ 1599.298448	+ 7060.008850
41-7	- 151108.121	- 39001.029	+ 6856.817578	+ 11060.755949
41-24	- 151091.609	- 39000.636	+ 9255.165661	+ 10880.864956
41-25	- 151091.457	- 38998.646	+ 9203.866652	+ 9036.861414
41-19	- 151070.324	- 38998.104	+ 6937.181304	+ 8972.297528
41-2	- 151078.734	- 38950.075	+ 7724.120336	+ 3521.474300
41-3	- 151085.625	- 38904.041	+ 4287.671875	+ 318.164094
41-27	- 151092.840	- 38905.123	+ 375.166440	+ 438.656875
41-26	- 151091.547	- 38913.604	+ 468.995281	+ 1262.995360
41-22	- 151111.325	- 38914.608	+ 1514.465300	+ 1337.318576
			+ 48222.748875	+ 53889.397902
		倍面積	= 5666.649027	
		面積	= 2833.324513	

5 LOT

点 名	X	Y	(X-X0)*(YN-1-Y0)	(XN-1-X0)*(Y-Y0)
X0-Y0	- 151000.000	- 39000.000		
41-7	- 151108.121	- 39001.029		
41-15	- 151106.942	- 39033.592	+ 110.043318	+ 3632.000632
41-16	- 151104.752	- 39035.633	+ 3518.829184	+ 3810.664286
41-23	- 151094.258	- 39035.309	+ 3358.695314	+ 3698.688368
41-24	- 151091.609	- 39000.636	+ 3234.622181	+ 59.948088
41-7	- 151108.121	- 39001.029	+ 68.764956	+ 94.265661
			+ 10290.954953	+ 11295.567035
		倍面積	= 1004.612082	
		面積	= 502.306041	

\* \* \* \* \* 各 筆 面 積 計 算 書 \* \* \* \* \*

6 LOT

点 名	X	Y	(X-X0)*(Yn-1-Y0)	(Xn-1-X0)*(Y-Y0)
X0·Y0	- 151000.000	- 38900.000		
41-23	- 151094.258	- 39035.309		
41-9	- 151068.988	- 39034.528	+ 9334.697292	+ 12680.340224
41-10	- 151064.831	- 39029.473	+ 8721.584768	+ 8932.083324
41-19	- 151070.324	- 38998.104	+ 9105.059252	+ 6360.180424
41-25	- 151091.457	- 38998.646	+ 8972.297528	+ 6937.181304
41-23	- 151094.258	- 39035.309	+ 9298.174668	+ 12374.955213
			+ 45431.813508	+ 47284.740489
		倍面積	= 1852.926981	
		面積	= 926.463490	

210

点 名	X	Y	(X-X0)*(Yn-1-Y0)	(Xn-1-X0)*(Y-Y0)
X0·Y0	- 151000.000	- 38800.000		
41-17	- 151086.825	- 38896.220		
41-11	- 151087.145	- 38894.132	+ 8385.091900	+ 8173.010900
41-12	- 151088.738	- 38892.929	+ 8353.085416	+ 8098.297705
41-13	- 151110.666	- 38895.724	+ 10284.080714	+ 8494.356312
41-14	- 151111.981	- 38897.253	+ 10719.269244	+ 10762.600498
41-18	- 151111.899	- 38899.422	+ 10882.513447	+ 11133.374982
41-17	- 151086.825	- 38896.220	+ 8632.315150	+ 10766.921780
			+ 57256.355871	+ 57428.562177
		倍面積	= 172.206306	
		面積	= 86.103153	

1 23キリ

点 名	X	Y	(X-X0)*(Yn-1-Y0)	(Xn-1-X0)*(Y-Y0)
X0·Y0	- 151000.000	- 39000.000		
41-1	- 151063.973	- 39034.373		
41-9	- 151068.988	- 39034.528	+ 2371.324524	+ 2208.859744
41-10	- 151064.831	- 39029.473	+ 2238.484768	+ 2033.283324
41-1	- 151063.973	- 39034.373	+ 1885.476229	+ 2228.435963
			+ 6495.285521	+ 6470.579031
		倍面積	= 24.706490	
		面積	= 12.353245	

4 23キリ

点 名	X	Y	(X-X0)*(Yn-1-Y0)	(Xn-1-X0)*(Y-Y0)
X0·Y0	- 151000.000	- 38800.000		
41-4	- 151087.357	- 38892.753		
41-11	- 151087.145	- 38894.132	+ 8082.960185	+ 8223.089124

\* \* \* \* \* 各 筆 面 積 計 算 書 \* \* \* \* \*

点 名	X	Y	(X-X0)*(YN-1-Y0)	(XN-1-X0)*(Y-Y0)
41-12	- 151088.738	- 38892.929	+ 8353.085416	+ 8098.297705
41-4	- 151087.357	- 38892.753	+ 8117.998653	+ 8230.715714
			+ 24554.044254	+ 24552.102543
		倍面積	= 1.941711	
		面積	= 0.970855	

5 区

点 名	X	Y	(X-X0)*(YN-1-Y0)	(XN-1-X0)*(Y-Y0)
X0-Y0	- 151100.000	- 38800.000		
41-5	- 151112.032	- 38895.898		
41-13	- 151110.666	- 38895.724	+ 1022.848068	+ 1151.751168
41-14	- 151111.981	- 38897.253	+ 1146.869244	+ 1037.300498
41-5	- 151112.032	- 38895.898	+ 1170.148096	+ 1148.953938
			+ 3339.865408	+ 3338.005604
		倍面積	= 1.859804	
		面積	= 0.929902	

8 区

点 名	X	Y	(X-X0)*(YN-1-Y0)	(XN-1-X0)*(Y-Y0)
X0-Y0	- 151100.000	- 39000.000		
41-8	- 151106.866	- 39035.698		
41-15	- 151106.942	- 39033.592	+ 247.815516	+ 230.642672
41-16	- 151104.752	- 39035.633	+ 159.629184	+ 247.364286
41-8	- 151106.866	- 39035.698	+ 244.656178	+ 169.636896
			+ 652.100878	+ 647.643854
		倍面積	= 4.457024	
		面積	= 2.228512	