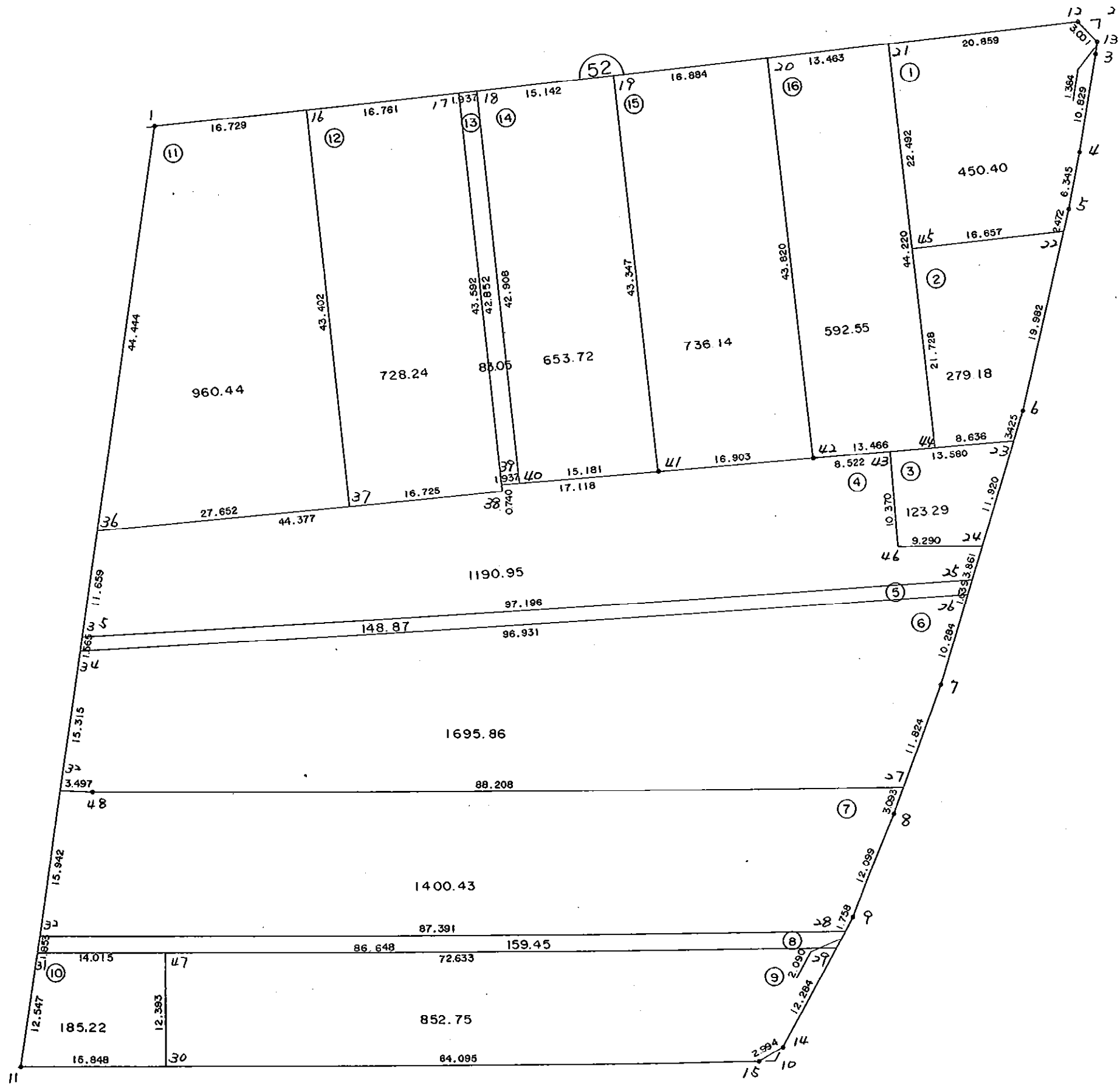


5 2 B L O C K



* * * 各筆面積 集計表 * * *

街区名・筆名	各筆面積	隅切面積
52 BLOCK	10240.66	
1 LOT	450.40	
2 LOT	279.18	
3 LOT	123.29	
4 LOT	1190.95	
5 LOT	148.87	
6 LOT	1695.86	
7 LOT	1400.43	
8 LOT	159.45	
9 LOT	852.75	
10 LOT	185.22	
11 LOT	960.44	
12 LOT	728.24	
13 LOT	83.05	
14 LOT	653.72	
15 LOT	736.14	
16 LOT	592.55	
2 スミキリ		2.86
10 スミキリ		1.32
合計 =	10240.54	4.18

* * * * * 各 筆 面 積 計 算 書 * * * * *

52 BLOCK

点 名	X	Y	(X-X0)*(YN-1-Y0)	(XN-1-X0)*(Y-Y0)
X0-Y0	- 151100.000	- 39000.000		
52-1	- 151131.960	- 39149.868		
52-12	- 151115.563	- 39049.422	+ 2332.395684	+ 1579.527120
52-13	- 151117.587	- 39047.206	+ 869.184714	+ 734.666978
52-3	- 151118.967	- 39047.314	+ 895.356202	+ 832.111318
52-4	- 151129.720	- 39048.591	+ 1406.172080	+ 921.625497
52-5	- 151136.000	- 39049.494	+ 1749.276000	+ 1470.961680
52-6	- 151158.100	- 39053.463	+ 2875.601400	+ 1924.668000
52-7	- 151188.300	- 39061.011	+ 4720.782900	+ 3544.739100
52-8	- 151202.528	- 39065.493	+ 6255.335808	+ 5783.031900
52-9	- 151213.949	- 39069.486	+ 7462.861857	+ 7124.260608
52-14	- 151228.507	- 39076.438	+ 8929.437402	+ 8710.033662
52-15	- 151230.177	- 39078.923	+ 9950.469526	+ 10142.157961
52-11	- 151234.905	- 39158.726	+ 10647.107315	+ 20662.474502
52-1	- 151131.960	- 39149.868	+ 5072.882960	+ 20217.942540
			+ 63166.863848	+ 83648.200866
		倍面積	= 20481.337018	
		面積	= 10240.668509	

1 LOT

点 名	X	Y	(X-X0)*(YN-1-Y0)	(XN-1-X0)*(Y-Y0)
X0-Y0	- 151100.000	- 39000.000		
52-21	- 151118.924	- 39070.009		
52-12	- 151115.563	- 39049.422	+ 1089.550067	+ 935.261928
52-13	- 151117.587	- 39047.206	+ 869.184714	+ 734.666978
52-3	- 151118.967	- 39047.314	+ 895.356202	+ 832.111318
52-4	- 151129.720	- 39048.591	+ 1406.172080	+ 921.625497
52-5	- 151136.000	- 39049.494	+ 1749.276000	+ 1470.961680
52-22	- 151138.433	- 39049.931	+ 1902.202902	+ 1797.516000
52-45	- 151141.119	- 39066.370	+ 2053.112789	+ 2550.798210
52-21	- 151118.924	- 39070.009	+ 1255.985880	+ 2878.700071
			+ 11220.840634	+ 12121.641682
		倍面積	= 900.801048	
		面積	= 450.400524	

2 LOT

点 名	X	Y	(X-X0)*(YN-1-Y0)	(XN-1-X0)*(Y-Y0)
X0-Y0	- 151100.000	- 39000.000		
52-22	- 151138.433	- 39049.931		
52-6	- 151158.100	- 39053.463	+ 2900.991100	+ 2054.743479
52-23	- 151161.423	- 39054.293	+ 3283.857849	+ 3154.423300
52-44	- 151162.561	- 39062.854	+ 3396.624373	+ 3860.681242

* * * * * 各 筆 面 積 計 算 書 * * * * *

点 名	X	Y	(X-X0)*(YN-1-Y0)	(XN-1-X0)*(Y-Y0)
52-45	- 151141.119	- 39066.370	+ 2584.493626	+ 4152.173570
52-22	- 151138.433	- 39049.931	+ 2550.798210	+ 2053.112789
			+ 14716.765158	+ 15275.134380
		倍面積	= 558.369222	
		面積	= 279.184611	

3 LOT

点 名	X	Y	(X-X0)*(YN-1-Y0)	(XN-1-X0)*(Y-Y0)
X0-Y0	- 151100.000	- 39000.000		
52-23	- 151161.423	- 39054.293		
52-24	- 151172.987	- 39057.183	+ 3962.683191	+ 3512.351409
52-46	- 151173.501	- 39066.459	+ 4203.007683	+ 4850.643033
52-43	- 151163.212	- 39067.754	+ 4201.006308	+ 4979.986754
52-23	- 151161.423	- 39054.293	+ 4161.653942	+ 3431.969116
			+ 16528.351124	+ 16774.950312
		倍面積	= 246.599188	
		面積	= 123.299594	

4 LOT

点 名	X	Y	(X-X0)*(YN-1-Y0)	(XN-1-X0)*(Y-Y0)
X0-Y0	- 151100.000	- 39000.000		
52-24	- 151172.987	- 39057.183		
52-25	- 151176.733	- 39058.120	+ 4387.823139	+ 4242.004440
52-35	- 151187.857	- 39154.677	+ 5106.248840	+ 11868.830241
52-36	- 151176.240	- 39153.678	+ 11792.574480	+ 13501.688046
52-38	- 151169.589	- 39109.802	+ 10694.298342	+ 8371.304480
52-39	- 151168.859	- 39109.921	+ 7560.855918	+ 7649.292469
52-41	- 151166.591	- 39092.954	+ 7319.749311	+ 6400.719486
52-42	- 151164.335	- 39076.202	+ 5980.195590	+ 5074.367382
52-43	- 151163.212	- 39067.754	+ 4816.880824	+ 4358.953590
52-46	- 151173.501	- 39066.459	+ 4979.986754	+ 4201.006308
52-24	- 151172.987	- 39057.183	+ 4850.643033	+ 4203.007683
			+ 67489.256231	+ 69871.174125
		倍面積	= 2381.917894	
		面積	= 1190.958947	

5 LOT

点 名	X	Y	(X-X0)*(YN-1-Y0)	(XN-1-X0)*(Y-Y0)
X0-Y0	- 151100.000	- 39000.000		
52-25	- 151176.733	- 39058.120		
52-26	- 151178.323	- 39058.517	+ 4552.132760	+ 4490.184961
52-34	- 151189.416	- 39154.811	+ 5232.356072	+ 12125.261953

* * * * * 各 筆 面 積 計 算 書 * * * * *

点 名	X	Y	(X-X0)*(YN-1-Y0)	(XN-1-X0)*(Y-Y0)
52-35	- 151187.857	- 39154.677	+ 13601.230027	+ 13830.598632
52-25	- 151176.733	- 39058.120	+ 11868.830241	+ 5106.248840
			+ 35254.549100	+ 35552.294386
		倍面積	= 297.745286	
		面積	= 148.872643	

6 LOT

点 名	X	Y	(X-X0)*(YN-1-Y0)	(XN-1-X0)*(Y-Y0)
X0-Y0	- 151100.000	- 39000.000		
52-26	- 151178.323	- 39058.517		
52-7	- 151188.300	- 39061.011	+ 5167.051100	+ 4778.564553
52-27	- 151199.578	- 39064.564	+ 6075.353358	+ 5701.001200
52-48	- 151204.637	- 39152.627	+ 6755.783268	+ 15198.291406
52-33	- 151204.675	- 39156.124	+ 15976.231225	+ 16336.346988
52-34	- 151189.416	- 39154.811	+ 13959.983584	+ 16204.841425
52-26	- 151178.323	- 39058.517	+ 12125.261953	+ 5232.356072
			+ 60059.664488	+ 63451.401644
		倍面積	= 3391.737156	
		面積	= 1695.868578	

7 LOT

点 名	X	Y	(X-X0)*(YN-1-Y0)	(XN-1-X0)*(Y-Y0)
X0-Y0	- 151100.000	- 39000.000		
52-27	- 151199.578	- 39064.564		
52-8	- 151202.528	- 39065.493	+ 6619.617792	+ 6521.661954
52-9	- 151213.949	- 39069.486	+ 7462.861857	+ 7124.260608
52-28	- 151215.535	- 39070.244	+ 8028.065010	+ 8004.233556
52-32	- 151220.558	- 39157.491	+ 8468.476152	+ 18195.722685
52-33	- 151204.675	- 39156.124	+ 16485.370425	+ 18821.997192
52-48	- 151204.637	- 39152.627	+ 16336.346988	+ 15976.231225
52-27	- 151199.578	- 39064.564	+ 15198.291406	+ 6755.783268
			+ 78599.029630	+ 81399.890488
		倍面積	= 2800.860858	
		面積	= 1400.430429	

8 LOT

点 名	X	Y	(X-X0)*(YN-1-Y0)	(XN-1-X0)*(Y-Y0)
X0-Y0	- 151200.000	- 39000.000		
52-28	- 151215.535	- 39070.244		
52-29	- 151217.421	- 39071.145	+ 1223.720724	+ 1105.237575
52-31	- 151222.404	- 39157.650	+ 1593.932580	+ 2746.420650
52-32	- 151220.558	- 39157.491	+ 3240.968700	+ 3528.428364

* * * * * 各 筆 面 積 計 算 書 * * * * *

点 名	X	Y	(X-X0)*(YN-1-Y0)	(XN-1-X0)*(Y-Y0)
52-28	151215.535	39070.244	+ 2446.622685	+ 1444.076152
			+ 8505.244689	+ 8824.162741
		倍面積	= 318.918052	
		面積	= 159.459026	

9 LOT

点 名	X	Y	(X-X0)*(YN-1-Y0)	(XN-1-X0)*(Y-Y0)
X0-Y0	151200.000	39000.000		
52-29	151217.421	39071.145		
52-14	151228.507	39076.438	+ 2028.130515	+ 1331.626398
52-15	151230.177	39078.923	+ 2306.669526	+ 2249.857961
52-30	151233.968	39142.906	+ 2680.856464	+ 4312.474362
52-47	151221.598	39143.658	+ 3086.483788	+ 4879.774944
52-29	151217.421	39071.145	+ 2502.666018	+ 1536.589710
			+ 12604.806311	+ 14310.323375
		倍面積	= 1705.517064	
		面積	= 852.758532	

10 LOT

点 名	X	Y	(X-X0)*(YN-1-Y0)	(XN-1-X0)*(Y-Y0)
X0-Y0	151200.000	39100.000		
52-30	151233.968	39142.906		
52-11	151234.905	39158.726	+ 1497.633930	+ 1994.804768
52-31	151222.404	39157.650	+ 1315.697304	+ 2012.273250
52-47	151221.598	39143.658	+ 1245.124700	+ 978.113832
52-30	151233.968	39142.906	+ 1482.974944	+ 926.683788
			+ 5541.430878	+ 5911.875638
		倍面積	= 370.444760	
		面積	= 185.222380	

11 LOT

点 名	X	Y	(X-X0)*(YN-1-Y0)	(XN-1-X0)*(Y-Y0)
X0-Y0	151100.000	39100.000		
52-36	151176.240	39153.678		
52-1	151131.960	39149.868	+ 1715.548880	+ 3801.936320
52-16	151129.265	39133.358	+ 1459.387020	+ 1066.121680
52-37	151172.096	39126.338	+ 2404.978368	+ 770.781570
52-36	151176.240	39153.678	+ 2008.009120	+ 3869.969088
			+ 7587.923388	+ 9508.808658
		倍面積	= 1920.885270	
		面積	= 960.442635	

* * * * * 各 筆 面 積 計 算 書 * * * * *

12 LOT

点 名	X	Y	(X-X0)*(YN-1-Y0)	(XN-1-X0)*(Y-Y0)
X0·Y0	- 151100.000	- 39100.000		
52-16	- 151129.265	- 39133.358		
52-17	- 151126.565	- 39116.816	+ 886.155270	+ 492.120240
52-38	- 151169.589	- 39109.802	+ 1170.208624	+ 260.390130
52-37	- 151172.096	- 39126.338	+ 706.684992	+ 1832.835082
52-16	- 151129.265	- 39133.358	+ 770.781570	+ 2404.978368
			+ 3533.830456	+ 4990.323820
		倍面積	= 1456.493364	
		面積	= 728.246682	

13 LOT

点 名	X	Y	(X-X0)*(YN-1-Y0)	(XN-1-X0)*(Y-Y0)
X0·Y0	- 151100.000	- 39100.000		
52-17	- 151126.565	- 39116.816		
52-18	- 151126.253	- 39114.904	+ 441.470448	+ 395.924760
52-40	- 151168.602	- 39108.001	+ 1022.444208	+ 210.050253
52-39	- 151168.859	- 39109.921	+ 550.940859	+ 680.600442
52-17	- 151126.565	- 39116.816	+ 263.551365	+ 1157.932944
			+ 2278.406880	+ 2444.508399
		倍面積	= 166.101519	
		面積	= 83.050759	

14 LOT

点 名	X	Y	(X-X0)*(YN-1-Y0)	(XN-1-X0)*(Y-Y0)
X0·Y0	- 151100.000	- 39000.000		
52-18	- 151126.253	- 39114.904		
52-19	- 151123.814	- 39099.960	+ 2736.323856	+ 2624.249880
52-41	- 151166.591	- 39092.954	+ 6656.436360	+ 2213.606556
52-40	- 151168.602	- 39108.001	+ 6376.830308	+ 7191.894591
52-18	- 151126.253	- 39114.904	+ 2835.350253	+ 7882.644208
			+ 18604.940777	+ 19912.395235
		倍面積	= 1307.454458	
		面積	= 653.727229	

15 LOT

点 名	X	Y	(X-X0)*(YN-1-Y0)	(XN-1-X0)*(Y-Y0)
X0·Y0	- 151100.000	- 39000.000		
52-19	- 151123.814	- 39099.960		
52-20	- 151121.093	- 39083.296	+ 2108.456280	+ 1983.610944
52-42	- 151164.335	- 39076.202	+ 5358.848160	+ 1607.328786

* * * * * 各 筆 面 積 計 算 書 * * * * *

点 名	X	Y	(X-X0)*(YN-1-Y0)	(XN-1-X0)*(Y-Y0)
52-41	- 151166.591	- 39092.954	+ 5074.367382	+ 5980.195590
52-19	- 151123.814	- 39099.960	+ 2213.606556	+ 6656.436360
			+ 14755.278378	+ 16227.571680
		倍面積	= 1472.293302	
		面積	= 736.146651	

16 LOT

点 名	X	Y	(X-X0)*(YN-1-Y0)	(XN-1-X0)*(Y-Y0)
X0-Y0	- 151100.000	- 39000.000		
52-20	- 151121.093	- 39083.296		
52-21	- 151118.924	- 39070.009	+ 1576.293504	+ 1476.699837
52-44	- 151162.561	- 39062.854	+ 4379.833049	+ 1189.449096
52-42	- 151164.335	- 39076.202	+ 4043.712090	+ 4767.273322
52-20	- 151121.093	- 39083.296	+ 1607.328786	+ 5358.848160
			+ 11607.167429	+ 12792.270415
		倍面積	= 1185.102986	
		面積	= 592.551493	

2 区切り

点 名	X	Y	(X-X0)*(YN-1-Y0)	(XN-1-X0)*(Y-Y0)
X0-Y0	- 151100.000	- 39000.000		
52-2	- 151115.171	- 39047.018		
52-12	- 151115.563	- 39049.422	+ 731.741134	+ 749.781162
52-13	- 151117.587	- 39047.206	+ 869.184714	+ 734.666978
52-2	- 151115.171	- 39047.018	+ 716.162226	+ 826.905566
			+ 2317.088074	+ 2311.353706
		倍面積	= 5.734368	
		面積	= 2.867184	

10 区切り

点 名	X	Y	(X-X0)*(YN-1-Y0)	(XN-1-X0)*(Y-Y0)
X0-Y0	- 151200.000	- 39000.000		
52-10	- 151230.074	- 39077.186		
52-14	- 151228.507	- 39076.438	+ 2200.341302	+ 2298.796412
52-15	- 151230.177	- 39078.923	+ 2306.669526	+ 2249.857961
52-10	- 151230.074	- 39077.186	+ 2373.530302	+ 2329.241922
			+ 6880.541130	+ 6877.896295
		倍面積	= 2.644835	
		面積	= 1.322417	