

5 5 B L O C K



\* \* \* 各筆面積 集計表 \* \* \*

街区名・筆名	各筆面積	隅切面積
55 BLOCK	9399.28	
1 LOT	923.21	
2 LOT	398.32	
3 LOT	33.26	
4 LOT	5.00	
5 LOT	103.18	
6 LOT	97.41	
7 LOT	473.80	
8 LOT	575.85	
9 LOT	457.41	
10 LOT	245.14	
11 LOT	125.95	
12 LOT	48.44	
13 LOT	292.68	
14 LOT	123.30	
15 LOT	644.10	
16 LOT	365.93	
17 LOT	6.03	
18 LOT	451.65	
19 LOT	990.23	
20 LOT	210.08	
21 LOT	528.61	
22 LOT	69.19	
23 LOT	516.52	
24 LOT	1143.72	
25 LOT	570.12	
1 スミ切り		12.28
2 スミ切り		3.58
21 スミ切り		4.35
22 スミ切り		111.62
合計 =	9399.13	131.83

397.30  
 { 18-1 LOT 54.35㎡  
 { 18-2 LOT 54.35㎡

\* \* \* \* \* 各 筆 面 積 計 算 書 \* \* \* \* \*

55 BLOCK

点 名	X	Y	(X-X0)*(YN-1-Y0)	(XN-1-X0)*(Y-Y0)
X0-Y0	- 151200.000	- 39000.000		
55-23	- 151246.366	- 39166.186		
55-24	- 151241.120	- 39161.761	+ 6833.568320	+ 7500.210526
55-25	- 151236.412	- 39083.110	+ 5890.041532	+ 3417.483200
55-26	- 151238.860	- 39081.410	+ 3229.654600	+ 2964.300920
55-3	- 151240.405	- 39082.066	+ 3289.371050	+ 3189.084760
55-4	- 151243.309	- 39083.258	+ 3554.196394	+ 3364.039490
55-5	- 151246.239	- 39084.369	+ 3849.766662	+ 3653.937021
55-6	- 151249.205	- 39085.376	+ 4151.376645	+ 3947.700864
55-7	- 151252.205	- 39086.297	+ 4457.054080	+ 4246.243885
55-8	- 151255.223	- 39087.147	+ 4765.579231	+ 4549.509135
55-9	- 151258.262	- 39087.904	+ 5077.358514	+ 4854.322592
55-10	- 151261.330	- 39088.573	+ 5391.152320	+ 5160.440126
55-11	- 151264.417	- 39089.136	+ 5705.606941	+ 5466.710880
55-12	- 151267.512	- 39089.619	+ 6017.749632	+ 5772.987123
55-13	- 151270.624	- 39090.013	+ 6329.252256	+ 6076.957656
55-14	- 151273.746	- 39090.277	+ 6638.098698	+ 6375.722848
55-15	- 151276.880	- 39090.463	+ 6940.495760	+ 6671.284398
55-16	- 151280.011	- 39090.576	+ 7238.035093	+ 6963.482880
55-17	- 151283.147	- 39090.588	+ 7531.122672	+ 7248.036468
55-18	- 151286.276	- 39090.501	+ 7815.570288	+ 7524.886647
55-19	- 151287.834	- 39090.416	+ 7949.064834	+ 7800.730816
55-20	- 151349.626	- 39086.983	+ 13528.584416	+ 7640.064822
55-27	- 151368.185	- 39085.859	+ 14629.235855	+ 12846.738734
55-28	- 151371.069	- 39088.690	+ 14687.813271	+ 14916.327650
55-29	- 151370.862	- 39138.442	+ 15153.750780	+ 23683.134498
55-30	- 151355.906	- 39154.963	+ 21583.938452	+ 26477.288106
55-23	- 151246.366	- 39166.186	+ 7185.014458	+ 25909.394516
			+199422.452754	+218221.020561
		倍面積	= 18798.567807	
		面積	= 9399.283903	

1 LOT

点 名	X	Y	(X-X0)*(YN-1-Y0)	(XN-1-X0)*(Y-Y0)
X0-Y0	- 151200.000	- 39000.000		
55-31	- 151239.607	- 39136.483		
55-25	- 151236.412	- 39083.110	+ 4969.618996	+ 3291.737770
55-26	- 151238.860	- 39081.410	+ 3229.654600	+ 2964.300920
55-3	- 151240.405	- 39082.066	+ 3289.371050	+ 3189.084760
55-4	- 151243.309	- 39083.258	+ 3554.196394	+ 3364.039490
55-5	- 151246.239	- 39084.369	+ 3849.766662	+ 3653.937021
55-6	- 151249.205	- 39085.376	+ 4151.376645	+ 3947.700864
55-7	- 151252.205	- 39086.297	+ 4457.054080	+ 4246.243885
55-32	- 151253.317	- 39086.610	+ 4601.097149	+ 4521.475050

\* \* \* \* \* 各 筆 面 積 計 算 書 \* \* \* \* \*

点 名	X	Y	(X-X0)*(YN-1-Y0)	(XN-1-X0)*(Y-Y0)
55-54	- 151258.431	- 39135.369	+ 5060.708910	+ 7217.468973
55-31	- 151239.607	- 39136.483	+ 5361.559983	+ 7974.838173
			+ 42524.404469	+ 44370.826986
		倍面積	= 1846.422437	
		面積	= 923.211218	

2 LOT

点 名	X	Y	(X-X0)*(YN-1-Y0)	(XN-1-X0)*(Y-Y0)
X0-Y0	- 151200.000	- 39000.000		
55-32	- 151253.317	- 39086.610		
55-8	- 151255.223	- 39087.147	+ 4782.864030	+ 4646.416599
55-9	- 151258.262	- 39087.904	+ 5077.358514	+ 4854.322592
55-10	- 151261.330	- 39088.573	+ 5391.152320	+ 5160.440126
55-11	- 151264.417	- 39089.136	+ 5705.606941	+ 5466.710880
55-12	- 151267.512	- 39089.619	+ 6017.749632	+ 5772.987123
55-13	- 151270.624	- 39090.013	+ 6329.252256	+ 6076.957656
55-14	- 151273.746	- 39090.277	+ 6638.098698	+ 6375.722848
55-33	- 151275.345	- 39090.372	+ 6801.920565	+ 6664.573512
55-56	- 151276.453	- 39104.800	+ 6909.210516	+ 7896.156000
55-57	- 151276.582	- 39106.462	+ 8025.793600	+ 8139.339286
55-55	- 151255.622	- 39108.585	+ 5921.629364	+ 8315.656470
55-32	- 151253.317	- 39086.610	+ 5789.426445	+ 4817.421420
			+ 73390.062881	+ 74186.704512
		倍面積	= 796.641631	
		面積	= 398.320815	

3 LOT

点 名	X	Y	(X-X0)*(YN-1-Y0)	(XN-1-X0)*(Y-Y0)
X0-Y0	- 151200.000	- 39000.000		
55-33	- 151275.345	- 39090.372		
55-15	- 151276.880	- 39090.463	+ 6947.799360	+ 6815.934735
55-34	- 151277.691	- 39090.492	+ 7028.160933	+ 6957.024960
55-62	- 151278.762	- 39104.648	+ 7127.330904	+ 8130.207768
55-56	- 151276.453	- 39104.800	+ 8000.653544	+ 8254.257600
55-33	- 151275.345	- 39090.372	+ 7896.156000	+ 6909.210516
			+ 37000.100741	+ 37066.635579
		倍面積	= 66.534838	
		面積	= 33.267419	

4 LOT

点 名	X	Y	(X-X0)*(YN-1-Y0)	(XN-1-X0)*(Y-Y0)
X0-Y0	- 151200.000	- 39000.000		
55-34	- 151277.691	- 39090.492		
55-35	- 151278.046	- 39090.505	+ 7062.538632	+ 7031.423955

\* \* \* \* \* 各 筆 面 積 計 算 書 \* \* \* \* \*

点 名	X	Y	(X-X0)*(YN-1-Y0)	(XN-1-X0)*(Y-Y0)
55-63	- 151279.114	- 39104.625	+ 7160.212570	+ 8165.562750
55-62	- 151278.762	- 39104.648	+ 8240.474250	+ 8279.121872
55-34	- 151277.691	- 39090.492	+ 8130.207768	+ 7127.330904
			+ 30593.433220	+ 30603.439481
		倍面積	= 10.006261	
		面積	= 5.003130	

5 LOT

点 名	X	Y	(X-X0)*(YN-1-Y0)	(XN-1-X0)*(Y-Y0)
X0·Y0	- 151200.000	- 39000.000		
55-35	- 151278.046	- 39090.505		
55-16	- 151280.011	- 39090.576	+ 7241.395555	+ 7069.094496
55-17	- 151283.147	- 39090.588	+ 7531.122672	+ 7248.036468
55-36	- 151285.510	- 39090.522	+ 7746.179880	+ 7526.632734
55-61	- 151286.548	- 39104.137	+ 7834.498056	+ 8904.754870
55-63	- 151279.114	- 39104.625	+ 8238.694618	+ 9055.084500
55-35	- 151278.046	- 39090.505	+ 8165.562750	+ 7160.212570
			+ 46757.453531	+ 46963.815638
		倍面積	= 206.362107	
		面積	= 103.181053	

6 LOT

点 名	X	Y	(X-X0)*(YN-1-Y0)	(XN-1-X0)*(Y-Y0)
X0·Y0	- 151200.000	- 39000.000		
55-36	- 151285.510	- 39090.522		
55-18	- 151286.276	- 39090.501	+ 7809.876072	+ 7738.740510
55-19	- 151287.834	- 39090.416	+ 7949.064834	+ 7800.730816
55-37	- 151288.570	- 39090.375	+ 8008.145120	+ 7937.997750
55-66	- 151290.634	- 39126.302	+ 8191.047750	+ 11186.568140
55-60	- 151288.311	- 39126.431	+ 11153.855922	+ 11458.947254
55-61	- 151286.548	- 39104.137	+ 10942.350188	+ 9196.442607
55-36	- 151285.510	- 39090.522	+ 8904.754870	+ 7834.498056
			+ 62959.094756	+ 63153.925133
		倍面積	= 194.830377	
		面積	= 97.415188	

7 LOT

点 名	X	Y	(X-X0)*(YN-1-Y0)	(XN-1-X0)*(Y-Y0)
X0·Y0	- 151200.000	- 39000.000		
55-37	- 151288.570	- 39090.375		
55-38	- 151301.753	- 39089.643	+ 9195.927375	+ 7939.680510
55-65	- 151303.743	- 39125.575	+ 9299.833749	+ 12777.632975

\* \* \* \* \* 各 筆 面 積 計 算 書 \* \* \* \* \*

点 名	X	Y	(X-X0)*(YN-1-Y0)	(XN-1-X0)*(Y-Y0)
55-66	- 151290.634	- 39126.302	+ 11381.364550	+ 13102.948386
55-37	- 151288.570	- 39090.375	+ 11186.568140	+ 8191.047750
			+ 41063.693814	+ 42011.309621
		倍面積	= 947.615807	
		面積	= 473.807903	

8 LOT

点 名	X	Y	(X-X0)*(YN-1-Y0)	(XN-1-X0)*(Y-Y0)
X0-Y0	- 151300.000	- 39000.000		
55-38	- 151301.753	- 39089.643		
55-39	- 151317.733	- 39088.755	+ 1589.639319	+ 155.587515
55-71	- 151319.726	- 39124.664	+ 1750.781130	+ 2210.666712
55-65	- 151303.743	- 39125.575	+ 466.617352	+ 2477.092450
55-38	- 151301.753	- 39089.643	+ 220.132975	+ 335.533749
			+ 4027.170776	+ 5178.880426
		倍面積	= 1151.709650	
		面積	= 575.854825	

9 LOT

点 名	X	Y	(X-X0)*(YN-1-Y0)	(XN-1-X0)*(Y-Y0)
X0-Y0	- 151300.000	- 39000.000		
55-39	- 151317.733	- 39088.755		
55-40	- 151330.434	- 39088.049	+ 2701.169670	+ 1561.372917
55-72	- 151332.428	- 39123.941	+ 2855.252972	+ 3772.020394
55-71	- 151319.726	- 39124.664	+ 2444.860166	+ 4042.604192
55-39	- 151317.733	- 39088.755	+ 2210.666712	+ 1750.781130
			+ 10211.949520	+ 11126.778633
		倍面積	= 914.829113	
		面積	= 457.414556	

10 LOT

点 名	X	Y	(X-X0)*(YN-1-Y0)	(XN-1-X0)*(Y-Y0)
X0-Y0	- 151300.000	- 39000.000		
55-40	- 151330.434	- 39088.049		
55-41	- 151337.240	- 39087.671	+ 3278.944760	+ 2668.179214
55-70	- 151338.026	- 39101.717	+ 3333.777446	+ 3787.941080
55-68	- 151339.237	- 39123.553	+ 3991.069929	+ 4698.226378
55-72	- 151332.428	- 39123.941	+ 4006.576684	+ 4863.073017
55-40	- 151330.434	- 39088.049	+ 3772.020394	+ 2855.252972
			+ 18382.389213	+ 18872.672661
		倍面積	= 490.283448	
		面積	= 245.141724	

\* \* \* \* \* 各 筆 面 積 計 算 書 \* \* \* \* \*

11 LOT

点 名	X	Y	(X-X0)*(YN-1-Y0)	(XN-1-X0)*(Y-Y0)
X0-Y0	- 151300.000	- 39000.000		
55-41	- 151337.240	- 39087.671		
55-42	- 151346.184	- 39087.174	+ 4048.997464	+ 3246.359760
55-74	- 151346.967	- 39101.211	+ 4094.301258	+ 4674.328824
55-70	- 151338.026	- 39101.717	+ 3848.649486	+ 4777.342339
55-41	- 151337.240	- 39087.671	+ 3787.941080	+ 3333.777446
			+ 15779.889288	+ 16031.808369
		倍面積	= 251.919081	
		面積	= 125.959540	

12 LOT

点 名	X	Y	(X-X0)*(YN-1-Y0)	(XN-1-X0)*(Y-Y0)
X0-Y0	- 151300.000	- 39000.000		
55-42	- 151346.184	- 39087.174		
55-20	- 151349.626	- 39086.983	+ 4326.096924	+ 4017.222872
55-75	- 151350.407	- 39101.016	+ 4384.552081	+ 5013.020016
55-74	- 151346.967	- 39101.211	+ 4744.418472	+ 5101.742877
55-42	- 151346.184	- 39087.174	+ 4674.328824	+ 4094.301258
			+ 18129.396301	+ 18226.287023
		倍面積	= 96.890722	
		面積	= 48.445361	

13 LOT

点 名	X	Y	(X-X0)*(YN-1-Y0)	(XN-1-X0)*(Y-Y0)
X0-Y0	- 151300.000	- 39000.000		
55-20	- 151349.626	- 39086.983		
55-27	- 151368.185	- 39085.859	+ 5930.935855	+ 4260.838734
55-28	- 151371.069	- 39088.690	+ 6101.913271	+ 6047.327650
55-43	- 151371.023	- 39099.850	+ 6299.029870	+ 7096.239650
55-75	- 151350.407	- 39101.016	+ 5033.138950	+ 7174.459368
55-20	- 151349.626	- 39086.983	+ 5013.020016	+ 4384.552081
			+ 28378.037962	+ 28963.417483
		倍面積	= 585.379521	
		面積	= 292.689760	

14 LOT

点 名	X	Y	(X-X0)*(YN-1-Y0)	(XN-1-X0)*(Y-Y0)
X0-Y0	- 151300.000	- 39000.000		
55-43	- 151371.023	- 39099.850		
55-44	- 151371.007	- 39103.601	+ 7090.048950	+ 7358.053823



\* \* \* \* \* 各 筆 面 積 計 算 書 \* \* \* \* \*

点 名	X	Y	(X-X0)*(YN-1-Y0)	(XN-1-X0)*(Y-Y0)
55-69	- 151338.233	- 39105.454	+ 3960.977033	+ 7487.972178
55-70	- 151338.026	- 39101.717	+ 4009.993804	+ 3888.946061
55-43	- 151371.023	- 39099.850	+ 7224.246491	+ 3796.896100
			+ 22285.266278	+ 22531.868162
		倍面積	= 246.601884	
		面積	= 123.300942	

15 LOT

点 名	X	Y	(X-X0)*(YN-1-Y0)	(XN-1-X0)*(Y-Y0)
X0-Y0	- 151300.000	- 39100.000		
55-44	- 151371.007	- 39103.601		
55-45	- 151370.923	- 39123.643	+ 255.393723	+ 1678.818501
55-73	- 151354.152	- 39124.568	+ 1280.315736	+ 1742.436264
55-67	- 151339.315	- 39125.388	+ 965.890920	+ 1374.810976
55-68	- 151339.237	- 39123.553	+ 996.148956	+ 925.986195
55-69	- 151338.233	- 39105.454	+ 900.501849	+ 213.998598
55-44	- 151371.007	- 39103.601	+ 387.272178	+ 137.677033
			+ 4785.523362	+ 6073.727567
		倍面積	= 1288.204205	
		面積	= 644.102102	

16 LOT

点 名	X	Y	(X-X0)*(YN-1-Y0)	(XN-1-X0)*(Y-Y0)
X0-Y0	- 151300.000	- 39100.000		
55-45	- 151370.923	- 39123.643		
55-29	- 151370.862	- 39138.442	+ 1675.390266	+ 2726.421966
55-30	- 151355.906	- 39154.963	+ 2149.138452	+ 3894.788106
55-76	- 151355.669	- 39150.947	+ 3059.735247	+ 2848.242982
55-73	- 151354.152	- 39124.568	+ 2758.881944	+ 1367.675992
55-45	- 151370.923	- 39123.643	+ 1742.436264	+ 1280.315736
			+ 11385.582173	+ 12117.444782
		倍面積	= 731.862609	
		面積	= 365.931304	

17 LOT

点 名	X	Y	(X-X0)*(YN-1-Y0)	(XN-1-X0)*(Y-Y0)
X0-Y0	- 151300.000	- 39100.000		
55-30	- 151355.906	- 39154.963		
55-46	- 151352.921	- 39155.269	+ 2908.696923	+ 3089.868714
55-76	- 151355.669	- 39150.947	+ 3076.769961	+ 2696.166187
55-30	- 151355.906	- 39154.963	+ 2848.242982	+ 3059.735247
			+ 8833.709866	+ 8845.770148
		倍面積	= 12.060282	
		面積	= 6.030141	

\* \* \* \* \* 各 筆 面 積 計 算 書 \* \* \* \* \*

18 LOT

点 名	X	Y	(X-X0)*(YN-1-Y0)	(XN-1-X0)*(Y-Y0)
X0·Y0	- 151300.000	- 39100.000		
55-46	- 151352.921	- 39155.269		
55-47	- 151341.098	- 39156.480	+ 2271.445362	+ 2988.978080
55-67	- 151339.315	- 39125.388	+ 2220.511200	+ 1043.396024
55-73	- 151354.152	- 39124.568	+ 1374.810976	+ 965.890920
55-76	- 151355.669	- 39150.947	+ 1367.675992	+ 2758.881944
55-46	- 151352.921	- 39155.269	+ 2696.166187	+ 3076.769961
			+ 9930.609717	+ 10833.916929
		倍面積	= 903.307212	
		面積	= 451.653606	

19 LOT

点 名	X	Y	(X-X0)*(YN-1-Y0)	(XN-1-X0)*(Y-Y0)
X0·Y0	- 151300.000	- 39100.000		
55-47	- 151341.098	- 39156.480		
55-48	- 151326.611	- 39157.964	+ 1502.989280	+ 2382.204472
55-77	- 151326.052	- 39147.973	+ 1510.078128	+ 1276.609503
55-64	- 151305.142	- 39150.112	+ 246.677166	+ 1305.517824
55-65	- 151303.743	- 39125.575	+ 187.569216	+ 131.506650
55-68	- 151339.237	- 39123.553	+ 1003.486275	+ 88.158879
55-67	- 151339.315	- 39125.388	+ 925.986195	+ 996.148956
55-47	- 151341.098	- 39156.480	+ 1043.396024	+ 2220.511200
			+ 6420.182284	+ 8400.657484
		倍面積	= 1980.475200	
		面積	= 990.237600	

20 LOT

点 名	X	Y	(X-X0)*(YN-1-Y0)	(XN-1-X0)*(Y-Y0)
X0·Y0	- 151300.000	- 39100.000		
55-48	- 151326.611	- 39157.964		
55-49	- 151305.712	- 39160.105	+ 331.090368	+ 1599.454155
55-64	- 151305.142	- 39150.112	+ 309.059910	+ 286.239744
55-77	- 151326.052	- 39147.973	+ 1305.517824	+ 246.677166
55-48	- 151326.611	- 39157.964	+ 1276.609503	+ 1510.078128
			+ 3222.277605	+ 3642.449193
		倍面積	= 420.171588	
		面積	= 210.085794	

21 LOT

点 名	X	Y	(X-X0)*(YN-1-Y0)	(XN-1-X0)*(Y-Y0)
X0·Y0	- 151200.000	- 39100.000		
55-49	- 151305.712	- 39160.105		
55-50	- 151290.971	- 39161.616	+ 5467.811955	+ 6513.550592

\* \* \* \* \* 各 筆 面 積 計 算 書 \* \* \* \* \*

点 名	X	Y	(X-X0)*(YN-1-Y0)	(XN-1-X0)*(Y-Y0)
55-60	- 151288.311	- 39126.431	+ 5441.370576	+ 2404.454501
55-65	- 151303.743	- 39125.575	+ 2742.031233	+ 2258.553825
55-49	- 151305.712	- 39160.105	+ 2703.584400	+ 6235.473015
			+ 16354.798164	+ 17412.031933
		倍面積	= 1057.233769	
		面積	= 528.616884	

22 LOT

点 名	X	Y	(X-X0)*(YN-1-Y0)	(XN-1-X0)*(Y-Y0)
X0·Y0	- 151200.000	- 39100.000		
55-50	- 151290.971	- 39161.616		
55-51	- 151288.219	- 39161.898	+ 5435.701904	+ 5630.922958
55-58	- 151286.330	- 39136.909	+ 5343.654340	+ 3256.075071
55-59	- 151289.087	- 39136.701	+ 3288.112083	+ 3168.397330
55-50	- 151290.971	- 39161.616	+ 3338.726671	+ 5489.184592
			+ 17406.194998	+ 17544.579951
		倍面積	= 138.384953	
		面積	= 69.192476	

23 LOT

点 名	X	Y	(X-X0)*(YN-1-Y0)	(XN-1-X0)*(Y-Y0)
X0·Y0	- 151200.000	- 39100.000		
55-51	- 151288.219	- 39161.898		
55-52	- 151280.928	- 39162.645	+ 5009.281344	+ 5526.479255
55-56	- 151276.453	- 39104.800	+ 4789.398185	+ 388.454400
55-61	- 151286.548	- 39104.137	+ 415.430400	+ 316.286061
55-60	- 151288.311	- 39126.431	+ 365.342607	+ 2287.550188
55-59	- 151289.087	- 39136.701	+ 2354.658497	+ 3241.102011
55-58	- 151286.330	- 39136.909	+ 3168.397330	+ 3288.112083
55-51	- 151288.219	- 39161.898	+ 3256.075071	+ 5343.654340
			+ 19358.583434	+ 20391.638338
		倍面積	= 1033.054904	
		面積	= 516.527452	

24 LOT

点 名	X	Y	(X-X0)*(YN-1-Y0)	(XN-1-X0)*(Y-Y0)
X0·Y0	- 151200.000	- 39100.000		
55-52	- 151280.928	- 39162.645		
55-53	- 151261.500	- 39164.635	+ 3852.667500	+ 5230.781280
55-55	- 151255.622	- 39108.585	+ 3595.127970	+ 527.977500
55-57	- 151276.582	- 39106.462	+ 657.456470	+ 359.429364
55-52	- 151280.928	- 39162.645	+ 522.956736	+ 4797.479390

\* \* \* \* \* 各 筆 面 積 計 算 書 \* \* \* \* \*

点 名                    X                    Y                    (X-X0)\*(YN-1-Y0)                    (XN-1-X0)\*(Y-Y0)

+ 8628.208676                    + 10915.667534  
 倍面積 = 2287.458858  
 面積 = 1143.729429

25 LOT

点 名                    X                    Y                    (X-X0)\*(YN-1-Y0)                    (XN-1-X0)\*(Y-Y0)

X0-Y0	-	151200.000	-	39100.000				
55-53	-	151261.500	-	39164.635				
55-23	-	151246.366	-	39166.186	+	2996.866410	+	4070.439000
55-24	-	151241.120	-	39161.761	+	2721.568320	+	2863.610526
55-31	-	151239.607	-	39136.483	+	2446.167927	+	1500.180960
55-54	-	151258.431	-	39135.369	+	2131.738173	+	1400.859983
55-53	-	151261.500	-	39164.635	+	2175.193500	+	3776.687685

+ 12471.534330                    + 13611.778154  
 倍面積 = 1140.243824  
 面積 = 570.121912

1 区切り

点 名                    X                    Y                    (X-X0)\*(YN-1-Y0)                    (XN-1-X0)\*(Y-Y0)

X0-Y0	-	151200.000	-	39100.000				
55-1	-	151241.415	-	39166.693				
55-23	-	151246.366	-	39166.186	+	3092.287638	+	2741.093190
55-24	-	151241.120	-	39161.761	+	2721.568320	+	2863.610526
55-1	-	151241.415	-	39166.693	+	2557.831815	+	2742.416160

+ 8371.687773                    + 8347.119876  
 倍面積 = 24.567897  
 面積 = 12.283948

2 区切り

点 名                    X                    Y                    (X-X0)\*(YN-1-Y0)                    (XN-1-X0)\*(Y-Y0)

X0-Y0	-	151200.000	-	39000.000				
55-2	-	151236.244	-	39080.299				
55-25	-	151236.412	-	39083.110	+	2923.847188	+	3012.238840
55-26	-	151238.860	-	39081.410	+	3229.654600	+	2964.300920
55-2	-	151236.244	-	39080.299	+	2950.624040	+	3120.419140

+ 9104.125828                    + 9096.958900  
 倍面積 = 7.166928  
 面積 = 3.583464

21 区切り

点 名                    X                    Y                    (X-X0)\*(YN-1-Y0)                    (XN-1-X0)\*(Y-Y0)

X0-Y0	-	151300.000	-	39000.000				
55-21	-	151371.081	-	39085.684				
55-27	-	151368.185	-	39085.859	+	5842.363540	+	6102.943579

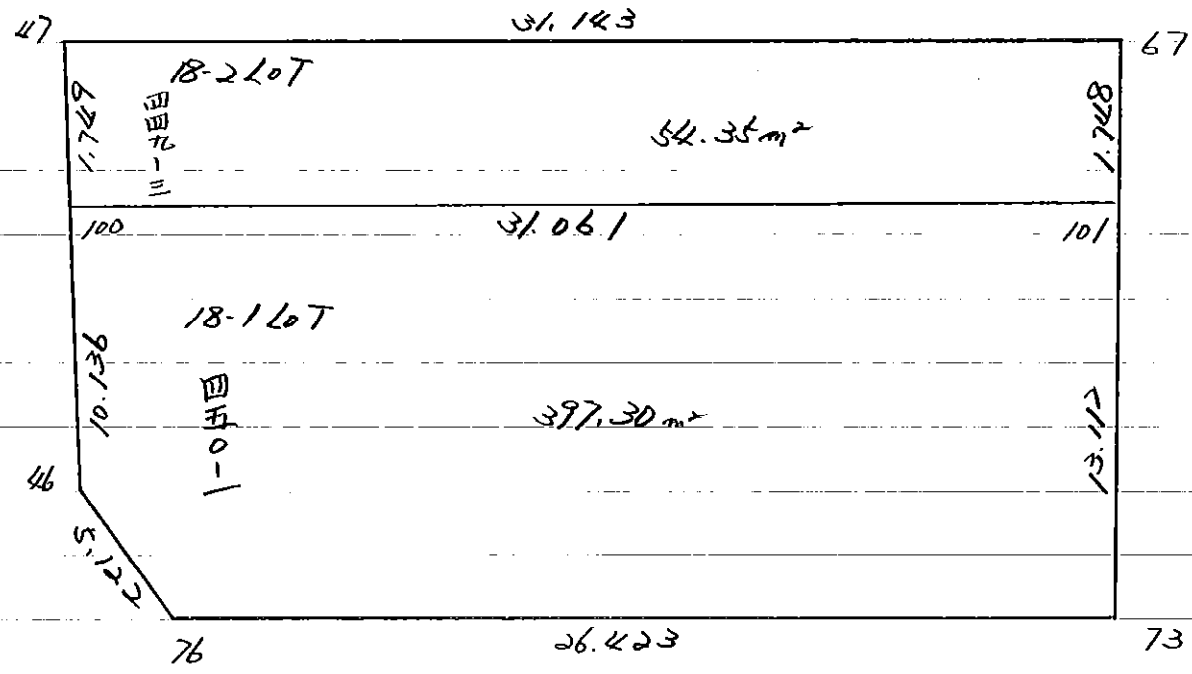
\* \* \* \* \* 各 筆 面 積 計 算 書 \* \* \* \* \*

点 名	X	Y	(X-X0)*(YN-1-Y0)	(XN-1-X0)*(Y-Y0)
55-28	151371.069	39088.690	+ 6101.913271	+ 6047.327650
55-21	151371.081	39085.684	+ 6304.173890	+ 6089.476196
			+ 18248.450701	+ 18239.747425
		倍面積	= 8.703276	
		面積	= 4.351638	

22 筆目

点 名	X	Y	(X-X0)*(YN-1-Y0)	(XN-1-X0)*(Y-Y0)
X0-Y0	151300.000	39100.000		
55-22	151370.800	39153.437		
55-29	151370.862	39138.442	+ 3786.652694	+ 2721.693600
55-30	151355.906	39154.963	+ 2149.138452	+ 3894.788106
55-22	151370.800	39153.437	+ 3891.380400	+ 2987.448922
			+ 9827.171546	+ 9603.930628
		倍面積	= 223.240918	
		面積	= 111.620459	

55 Block



\* \* \* \* 18-1 LOT

面積計算書

\* \* \* \* NO 1

点名	X	DX	DMD.1	Y	DY	DMD.2	DX * DMD.2	DY * DMD.1
55-46	- 151352.921			- 39155.269				
55-100	- 151342.838	- 10.083	- 10.083	- 39156.302	+ 1.033	+ 1.033	- 10.415739	- 10.415739
55-101	- 151341.060	- 1.778	- 21.944	- 39125.292	- 31.010	- 28.944	+ 51.462432	+ 680.483440
55-73	- 151354.152	+ 13.092	- 10.630	- 39124.568	- 0.724	- 60.678	- 794.396376	+ 7.696120
55-76	- 151355.669	+ 1.517	+ 3.979	- 39150.947	+ 26.379	- 35.023	- 53.129891	+ 104.962041
55-46	- 151352.921	- 2.748	+ 2.748	- 39155.269	+ 4.322	- 4.322	+ 11.876856	+ 11.876856
		+ 14.609			+ 31.734		+ 63.339288	+ 805.018457
		- 14.609			- 31.734		- 857.942006	- 10.415739
							- 794.602718	+ 794.602718

面積 = 397.301359

\* \* \* \* 18-2 LOT

面積計算書

\* \* \* \* NO 1

点名	X	DX	DMD.1	Y	DY	DMD.2	DX * DMD.2	DY * DMD.1
55-100	- 151342.838			- 39156.302				
55-47	- 151341.098	- 1.740	- 1.740	- 39156.480	+ 0.178	+ 0.178	- 0.309720	- 0.309720
55-67	- 151339.315	- 1.783	- 5.263	- 39125.388	- 31.092	- 30.736	+ 54.802288	+ 163.637196
55-101	- 151341.060	+ 1.745	- 5.301	- 39125.292	- 0.096	- 61.924	- 108.057380	+ 0.508896
55-100	- 151342.838	+ 1.778	- 1.778	- 39156.302	+ 31.010	- 31.010	- 55.135780	- 55.135780
		+ 3.523			+ 31.188		+ 54.802288	+ 164.146092
		- 3.523			- 31.188		- 163.502880	- 55.445500
							- 108.700592	+ 108.700592
						面積 =	54.350296	