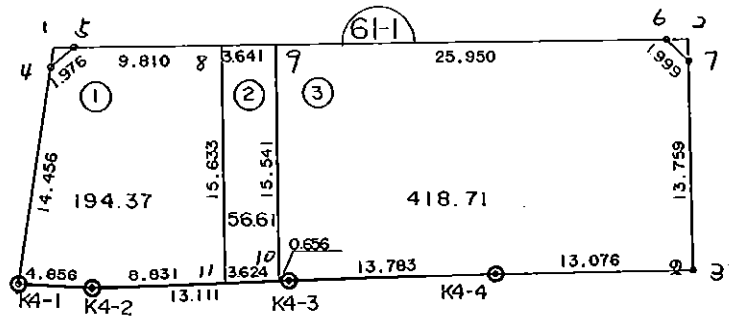


6 1 - 1 B L O C K



\* \* \* 各筆面積 集計表 \* \* \*

街区名・筆名	各筆面積	隅切面積
61-1 BLOCK	669.68	
1 LOT	194.37	
2 LOT	56.61	
3 LOT	418.71	
1 スミ切り		0.82
2 スミ切り		0.99
合計 =	669.69	1.81

\* \* \* \* \* 各 筆 面 積 計 算 書 \* \* \* \* \*

61-1 BLOCK

点 名	X	Y	(X-X0)*(YN-1-Y0)	(XN-1-X0)*(Y-Y0)
X0·Y0	- 151000.000	- 39200.000		
61-1-4	- 151103.869	- 39259.631		
61-1-5	- 151102.470	- 39258.236	+ 6110.388570	+ 6048.915084
61-1-6	- 151098.752	- 39219.011	+ 5750.921472	+ 1948.057170
61-1-7	- 151099.999	- 39217.448	+ 1901.080989	+ 1723.024896
61-1-3	- 151113.689	- 39216.068	+ 1983.645672	+ 1606.783932
K4-4	- 151115.007	- 39229.077	+ 1847.932476	+ 3305.735053
K4-3	- 151116.596	- 39242.768	+ 3390.261892	+ 4918.619376
K4-2	- 151118.165	- 39255.785	+ 5053.680720	+ 6504.307860
K4-1	- 151118.290	- 39260.639	+ 6598.807650	+ 7165.407435
61-1-4	- 151103.869	- 39259.631	+ 6298.512291	+ 7053.750990
			+ 38935.231732	+ 40274.601796
		倍面積	= 1339.370064	
		面積	= 669.685032	

1 LOT

点 名	X	Y	(X-X0)*(YN-1-Y0)	(XN-1-X0)*(Y-Y0)
X0·Y0	- 151100.000	- 39200.000		
61-1-4	- 151103.869	- 39259.631		
61-1-5	- 151102.470	- 39258.236	+ 147.288570	+ 225.315084
61-1-8	- 151101.544	- 39248.470	+ 89.916384	+ 119.720900
61-1-11	- 151117.109	- 39247.017	+ 829.273230	+ 72.594248
K4-2	- 151118.165	- 39255.785	+ 854.063805	+ 954.425565
K4-1	- 151118.290	- 39260.639	+ 1020.307650	+ 1101.507435
61-1-4	- 151103.869	- 39259.631	+ 234.612291	+ 1090.650990
			+ 3175.461930	+ 3564.214222
		倍面積	= 388.752292	
		面積	= 194.376146	

2 LOT

点 名	X	Y	(X-X0)*(YN-1-Y0)	(XN-1-X0)*(Y-Y0)
X0·Y0	- 151100.000	- 39200.000		
61-1-8	- 151101.544	- 39248.470		
61-1-9	- 151101.200	- 39244.845	+ 58.164000	+ 69.240680
61-1-10	- 151116.675	- 39243.419	+ 747.790375	+ 52.102800
61-1-11	- 151117.109	- 39247.017	+ 742.855671	+ 784.008475
61-1-8	- 151101.544	- 39248.470	+ 72.594248	+ 829.273230
			+ 1621.404294	+ 1734.625185
		倍面積	= 113.220891	
		面積	= 56.610445	

\* \* \* \* \* 各 筆 面 積 計 算 書 \* \* \* \* \*

3 LOT

点 名	X	Y	(X-X0)*(YN-1-Y0)	(XN-1-X0)*(Y-Y0)
X0-Y0	- 151000.000	- 39200.000		
61-1-9	- 151101.200	- 39244.845		
61-1-6	- 151098.752	- 39219.011	+ 4428.533440	+ 1923.913200
61-1-7	- 151099.999	- 39217.448	+ 1901.080989	+ 1723.024896
61-1-3	- 151113.689	- 39216.068	+ 1983.645672	+ 1606.783932
K4-4	- 151115.007	- 39229.077	+ 1847.932476	+ 3305.735053
K4-3	- 151116.596	- 39242.768	+ 3390.261892	+ 4918.619376
61-1-10	- 151116.675	- 39243.419	+ 4989.956400	+ 5062.481724
61-1-9	- 151101.200	- 39244.845	+ 4394.002800	+ 5232.290375
			+ 22935.413669	+ 23772.848556
		倍面積	= 837.434887	
		面積	= 418.717443	

1 区切り

点 名	X	Y	(X-X0)*(YN-1-Y0)	(XN-1-X0)*(Y-Y0)
X0-Y0	- 151100.000	- 39200.000		
61-1-1	- 151102.594	- 39259.542		
61-1-4	- 151103.869	- 39259.631	+ 230.367998	+ 154.682814
61-1-5	- 151102.470	- 39258.236	+ 147.288570	+ 225.315084
61-1-1	- 151102.594	- 39259.542	+ 151.064184	+ 147.068740
			+ 528.720752	+ 527.066638
		倍面積	= 1.654114	
		面積	= 0.827057	

2 区切り

点 名	X	Y	(X-X0)*(YN-1-Y0)	(XN-1-X0)*(Y-Y0)
X0-Y0	- 151000.000	- 39200.000		
61-1-2	- 151098.617	- 39217.587		
61-1-6	- 151098.752	- 39219.011	+ 1736.751424	+ 1874.807787
61-1-7	- 151099.999	- 39217.448	+ 1901.080989	+ 1723.024896
61-1-2	- 151098.617	- 39217.587	+ 1720.669416	+ 1758.682413
			+ 5358.501829	+ 5356.515096
		倍面積	= 1.986733	
		面積	= 0.993366	