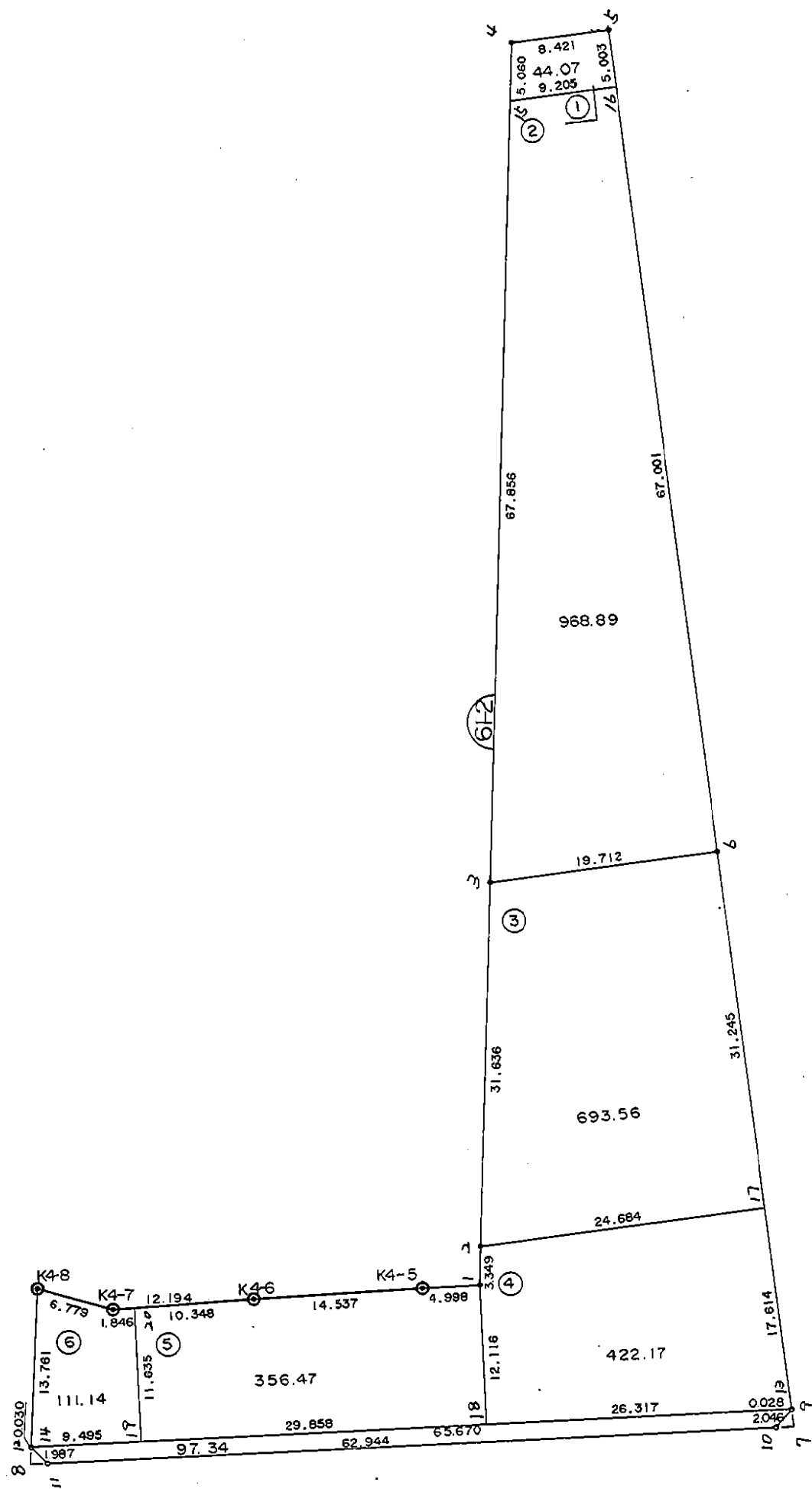


6 1 - 2 B L O C K



* * * 各筆面積 集計表 * * *

街区名・筆名	各筆面積	隅切面積
61-2 BLOCK	2693.66	
1 LOT	44.07	
2 LOT	968.89	
3 LOT	693.56	
4 LOT	422.17	
5 LOT	356.47	
6 LOT	111.14	
7 刈り	97.34	1.13
8 刈り		1.07
合計 =	2693.64	2.20

* * * * * 各 筆 面 積 計 算 書 * * * * *

61-2 BLOCK

点 名	X	Y	(X-X0)*(YN-1-Y0)	(XN-1-X0)*(Y-Y0)
X0·Y0	- 151100.000	- 39200.000		
61-2-1	- 151224.779	- 39229.959		
61-2-2	- 151221.434	- 39229.793	+ 3638.041206	+ 3717.540747
61-2-3	- 151189.844	- 39228.084	+ 2676.722292	+ 3410.352456
61-2-4	- 151117.032	- 39224.185	+ 478.326688	+ 2172.877140
61-2-5	- 151116.174	- 39215.808	+ 391.168190	+ 269.241856
61-2-6	- 151187.804	- 39208.478	+ 1388.005632	+ 137.123172
61-2-9	- 151236.428	- 39203.414	+ 1156.636584	+ 299.762856
61-2-10	- 151237.947	- 39204.785	+ 470.951058	+ 652.807980
61-2-11	- 151239.110	- 39267.718	+ 665.641350	+ 9341.494946
61-2-12	- 151237.660	- 39269.077	+ 9322.059880	+ 9609.301470
K4-8	- 151223.901	- 39268.146	+ 8558.709377	+ 9380.978360
K4-7	- 151225.900	- 39261.668	+ 8579.581400	+ 7640.726868
K4-6	- 151225.371	- 39249.485	+ 7731.378828	+ 6230.161500
K4-5	- 151224.885	- 39234.956	+ 6179.934225	+ 4382.468676
61-2-1	- 151224.779	- 39229.959	+ 4361.774724	+ 3741.429715
			+ 55598.931434	+ 60986.267742
		倍面積	= 5387.336308	
		面積	= 2693.668154	

1 LOT

点 名	X	Y	(X-X0)*(YN-1-Y0)	(XN-1-X0)*(Y-Y0)
X0·Y0	- 151100.000	- 39200.000		
61-2-15	- 151122.085	- 39224.456		
61-2-4	- 151117.032	- 39224.185	+ 416.534592	+ 534.125725
61-2-5	- 151116.174	- 39215.808	+ 391.168190	+ 269.241856
61-2-16	- 151121.151	- 39215.299	+ 334.355008	+ 247.446026
61-2-15	- 151122.085	- 39224.456	+ 337.878415	+ 517.268856
			+ 1479.936205	+ 1568.082463
		倍面積	= 88.146258	
		面積	= 44.073129	

2 LOT

点 名	X	Y	(X-X0)*(YN-1-Y0)	(XN-1-X0)*(Y-Y0)
X0·Y0	- 151100.000	- 39200.000		
61-2-16	- 151121.151	- 39215.299		
61-2-6	- 151187.804	- 39208.478	+ 1343.313396	+ 179.318178
61-2-3	- 151189.844	- 39228.084	+ 761.697432	+ 2465.887536
61-2-15	- 151122.085	- 39224.456	+ 620.235140	+ 2197.224864
61-2-16	- 151121.151	- 39215.299	+ 517.268856	+ 337.878415
			+ 3242.514824	+ 5180.308993
		倍面積	= 1937.794169	
		面積	= 968.897084	

* * * * * 各 筆 面 積 計 算 書 * * * * *

3 LOT

点 名	X	Y	(X-X0)*(YN-1-Y0)	(XN-1-X0)*(Y-Y0)
X0·Y0	- 151100.000	- 39200.000		
61-2-6	- 151187.804	- 39208.478		
61-2-17	- 151218.881	- 39205.241	+ 1007.873118	+ 460.180764
61-2-2	- 151221.434	- 39229.793	+ 636.435594	+ 3541.821633
61-2-3	- 151189.844	- 39228.084	+ 2676.722292	+ 3410.352456
61-2-6	- 151187.804	- 39208.478	+ 2465.887536	+ 761.697432
			+ 6786.918540	+ 8174.052285
		倍面積	= 1387.133745	
		面積	= 693.566872	

4 LOT

点 名	X	Y	(X-X0)*(YN-1-Y0)	(XN-1-X0)*(Y-Y0)
X0·Y0	- 151200.000	- 39200.000		
61-2-17	- 151218.881	- 39205.241		
61-2-13	- 151236.400	- 39203.417	+ 190.772400	+ 64.516377
61-2-18	- 151236.893	- 39229.729	+ 126.063381	+ 1082.135600
61-2-1	- 151224.779	- 39229.959	+ 736.654891	+ 1105.277387
61-2-2	- 151221.434	- 39229.793	+ 642.141206	+ 738.240747
61-2-17	- 151218.881	- 39205.241	+ 562.521633	+ 112.335594
			+ 2258.153511	+ 3102.505705
		倍面積	= 844.352194	
		面積	= 422.176097	

5 LOT

点 名	X	Y	(X-X0)*(YN-1-Y0)	(XN-1-X0)*(Y-Y0)
X0·Y0	- 151200.000	- 39200.000		
61-2-18	- 151236.893	- 39229.729		
61-2-19	- 151237.452	- 39259.582	+ 1113.410508	+ 2198.158726
61-2-20	- 151225.820	- 39259.824	+ 1538.407240	+ 2240.528448
K4-6	- 151225.371	- 39249.485	+ 1517.794704	+ 1277.702700
K4-5	- 151224.885	- 39234.956	+ 1231.434225	+ 886.868676
61-2-1	- 151224.779	- 39229.959	+ 866.174724	+ 745.529715
61-2-18	- 151236.893	- 39229.729	+ 1105.277387	+ 736.654891
			+ 7372.498788	+ 8085.443156
		倍面積	= 712.944368	
		面積	= 356.472184	

6 LOT

点 名	X	Y	(X-X0)*(YN-1-Y0)	(XN-1-X0)*(Y-Y0)
X0·Y0	- 151200.000	- 39200.000		
61-2-19	- 151237.452	- 39259.582		
61-2-14	- 151237.630	- 39269.075	+ 2242.070660	+ 2586.996900

* * * * * 各 筆 面 積 計 算 書 * * * * *

点 名	X	Y	(X-X0)*(YN-1-Y0)	(XN-1-X0)*(Y-Y0)
K4-8	- 151223.901	- 39268.146	+ 1650.961575	+ 2564.333980
K4-7	- 151225.900	- 39261.668	+ 1764.981400	+ 1473.926868
61-2-20	- 151225.820	- 39259.824	+ 1592.267760	+ 1549.441600
61-2-19	- 151237.452	- 39259.582	+ 2240.528448	+ 1538.407240
			+ 9490.809843	+ 9713.106588
		倍面積	= 222.296745	
		面積	= 111.148372	

210

点 名	X	Y	(X-X0)*(YN-1-Y0)	(XN-1-X0)*(Y-Y0)
X0-Y0	- 151200.000	- 39200.000		
61-2-13	- 151236.400	- 39203.417		
61-2-9	- 151236.428	- 39203.414	+ 124.474476	+ 124.269600
61-2-10	- 151237.947	- 39204.785	+ 129.551058	+ 174.307980
61-2-11	- 151239.110	- 39267.718	+ 187.141350	+ 2569.694946
61-2-12	- 151237.660	- 39269.077	+ 2550.259880	+ 2701.601470
61-2-14	- 151237.630	- 39269.075	+ 2599.367510	+ 2601.364500
61-2-13	- 151236.400	- 39203.417	+ 2514.330000	+ 128.581710
			+ 8105.124274	+ 8299.820206
		倍面積	= 194.695932	
		面積	= 97.347966	

7 33キリ

点 名	X	Y	(X-X0)*(YN-1-Y0)	(XN-1-X0)*(Y-Y0)
X0-Y0	- 151200.000	- 39200.000		
61-2-7	- 151237.919	- 39203.259		
61-2-9	- 151236.428	- 39203.414	+ 118.718852	+ 129.455466
61-2-10	- 151237.947	- 39204.785	+ 129.551058	+ 174.307980
61-2-7	- 151237.919	- 39203.259	+ 181.442415	+ 123.669273
			+ 429.712325	+ 427.432719
		倍面積	= 2.279606	
		面積	= 1.139803	

8 33キリ

点 名	X	Y	(X-X0)*(YN-1-Y0)	(XN-1-X0)*(Y-Y0)
X0-Y0	- 151200.000	- 39200.000		
61-2-8	- 151239.137	- 39269.177		
61-2-11	- 151239.110	- 39267.718	+ 2705.512470	+ 2650.279366
61-2-12	- 151237.660	- 39269.077	+ 2550.259880	+ 2701.601470
61-2-8	- 151239.137	- 39269.177	+ 2703.466549	+ 2605.205820
			+ 7959.238899	+ 7957.086656
		倍面積	= 2.152243	
		面積	= 1.076121	