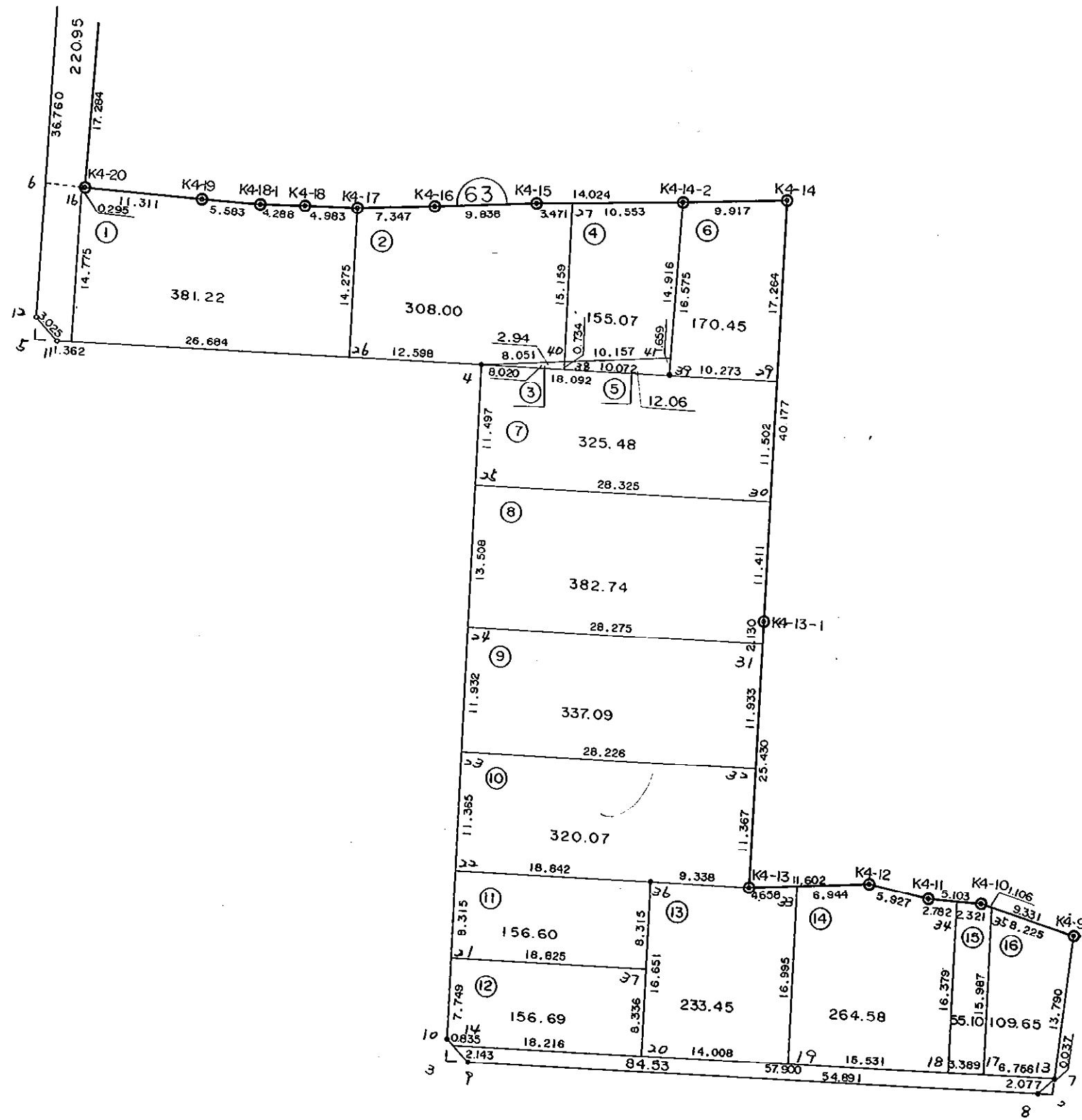


6 3 B L O C K

[



\* \* \* 各筆面積 集計表 \* \* \*

街区名・筆名	各筆面積	隅切面積
63 BLOCK	3505.39	
1 LOT	381.22	
2 LOT	308.00	
3 LOT	2.94	
4 LOT	155.07	
5 LOT	12.06	
6 LOT	170.45	
7 LOT	325.48	
8 LOT	382.74	
9 LOT	337.09	
10 LOT	320.07	
11 LOT	156.60	
12 LOT	156.69	
13 LOT	233.45	
14 LOT	264.58	
15 LOT	55.10	
16 LOT	109.65	
スロ 1	84.53	
スロ 2	49.58	
2 スキリ		0.98
3 スキリ		2.21
5 スキリ		2.32
合計 =	3505.30	5.51

\* \* \* \* \* 各 筆 面 積 計 算 書 \* \* \* \* \*

63 BLOCK

点 名	X	Y	(X-X0)*(YN-1-Y0)	(XN-1-X0)*(Y-Y0)
X0-Y0	- 151100.000	- 39200.000		
K4-9	- 151223.948	- 39272.188		
63-7	- 151237.746	- 39273.081	+ 9943.608248	+ 9058.243788
63-8	- 151239.223	- 39274.541	+ 10174.556063	+ 10267.724586
63-9	- 151240.286	- 39329.421	+ 10457.058726	+ 18018.379883
63-10	- 151238.227	- 39331.572	+ 17889.476567	+ 18457.709592
63-4	- 151173.873	- 39332.783	+ 9719.618356	+ 18354.195741
63-11	- 151174.653	- 39373.419	+ 9912.649299	+ 12810.981787
63-12	- 151172.524	- 39375.568	+ 12577.039556	+ 13106.677904
63-6	- 151159.816	- 39375.585	+ 10501.775488	+ 12734.126540
63-16	- 151159.852	- 39372.090	+ 10509.113420	+ 10293.735440
K4-20	- 151159.855	- 39371.795	+ 10300.446950	+ 10282.274340
K4-19	- 151160.111	- 39360.487	+ 10326.769245	+ 9605.949385
K4-18-1	- 151160.184	- 39354.904	+ 9658.749608	+ 9311.434344
K4-18	- 151159.999	- 39350.620	+ 9294.085096	+ 9064.914080
K4-17	- 151159.842	- 39345.639	+ 9013.402040	+ 8738.194361
K4-16	- 151159.146	- 39338.325	+ 8613.964294	+ 8277.644650
K4-15	- 151158.129	- 39328.540	+ 8040.693925	+ 7602.626840
K4-14-2	- 151156.996	- 39314.562	+ 7326.265840	+ 6659.374498
K4-14	- 151156.086	- 39304.687	+ 6425.324332	+ 5966.740252
K4-13-1	- 151196.258	- 39304.073	+ 10076.961246	+ 5837.038278
K4-13	- 151221.685	- 39303.698	+ 12664.123005	+ 9981.762084
K4-12	- 151220.485	- 39292.158	+ 12494.053530	+ 11214.246230
K4-11	- 151221.470	- 39286.313	+ 11194.432260	+ 10399.421805
K4-10	- 151221.571	- 39281.211	+ 10493.157723	+ 9864.700170
K4-9	- 151223.948	- 39272.188	+ 10065.941028	+ 8775.967348

倍面積 = +247673.265845  
 面積 = 7010.798081  
 = 3505.399040

1 LOT

点 名	X	Y	(X-X0)*(YN-1-Y0)	(XN-1-X0)*(Y-Y0)
X0-Y0	- 151100.000	- 39300.000		
63-26	- 151174.115	- 39345.379		
63-15	- 151174.627	- 39372.057	+ 3386.498633	+ 5340.504555
63-16	- 151159.852	- 39372.090	+ 4312.755564	+ 5379.860430
K4-20	- 151159.855	- 39371.795	+ 4314.946950	+ 4297.074340
K4-19	- 151160.111	- 39360.487	+ 4315.669245	+ 3620.449385
K4-18-1	- 151160.184	- 39354.904	+ 3640.349608	+ 3300.334344
K4-18	- 151159.999	- 39350.620	+ 3294.185096	+ 3046.514080
K4-17	- 151159.842	- 39345.639	+ 3029.202040	+ 2738.294361
63-26	- 151174.115	- 39345.379	+ 3382.534485	+ 2715.570118

倍面積 = + 29676.141621  
 面積 = 762.459992  
 = 381.229996

\* \* \* \* \* 各 筆 面 積 計 算 書 \* \* \* \* \*

2 LOT

点 名	X	Y	(X-X0)*(YN-1-Y0)	(XN-1-X0)*(Y-Y0)
X0·Y0	- 151100.000	- 39300.000		
63-4	- 151173.873	- 39332.783		
63-26	- 151174.115	- 39345.379	+ 2429.712045	+ 3352.282867
K4-17	- 151159.842	- 39345.639	+ 2715.570118	+ 3382.534485
K4-16	- 151159.146	- 39338.325	+ 2699.364294	+ 2293.444650
K4-15	- 151158.129	- 39328.540	+ 2227.793925	+ 1688.026840
63-27	- 151157.849	- 39325.080	+ 1651.010460	+ 1457.875320
63-40	- 151173.005	- 39324.779	+ 1830.965400	+ 1433.440371
63-4	- 151173.873	- 39332.783	+ 1830.499067	+ 2393.322915
			+ 15384.915309	+ 16000.927448
		倍面積	= 616.012139	
		面積	= 308.006069	

3 LOT

点 名	X	Y	(X-X0)*(YN-1-Y0)	(XN-1-X0)*(Y-Y0)
X0·Y0	- 151100.000	- 39300.000		
63-4	- 151173.873	- 39332.783		
63-40	- 151173.005	- 39324.779	+ 2393.322915	+ 1830.499067
63-38	- 151173.739	- 39324.764	+ 1827.178681	+ 1807.895820
63-4	- 151173.873	- 39332.783	+ 1829.390972	+ 2417.385637
			+ 6049.892568	+ 6055.780524
		倍面積	= 5.887956	
		面積	= 2.943978	

4 LOT

点 名	X	Y	(X-X0)*(YN-1-Y0)	(XN-1-X0)*(Y-Y0)
X0·Y0	- 151100.000	- 39300.000		
63-27	- 151157.849	- 39325.080		
K4-14-2	- 151156.996	- 39314.562	+ 1429.459680	+ 842.397138
63-41	- 151171.911	- 39314.681	+ 1047.167982	+ 836.758276
63-40	- 151173.005	- 39324.779	+ 1071.786405	+ 1781.882669
63-27	- 151157.849	- 39325.080	+ 1433.440371	+ 1830.965400
			+ 4981.854438	+ 5292.003483
		倍面積	= 310.149045	
		面積	= 155.074522	

5 LOT

点 名	X	Y	(X-X0)*(YN-1-Y0)	(XN-1-X0)*(Y-Y0)
X0·Y0	- 151100.000	- 39300.000		
63-40	- 151173.005	- 39324.779		
63-41	- 151171.911	- 39314.681	+ 1781.882669	+ 1071.786405

\* \* \* \* \* 各 筆 面 積 計 算 書 \* \* \* \* \*

点 名	X	Y	(X-X0)*(YN-1-Y0)	(XN-1-X0)*(Y-Y0)
63-39	- 151173.570	- 39314.694	+ 1080.081170	+ 1056.660234
63-38	- 151173.739	- 39324.764	+ 1083.520866	+ 1821.887480
63-40	- 151173.005	- 39324.779	+ 1807.895820	+ 1827.178681
			+ 5753.380525	+ 5777.512800
		倍面積	= 24.132275	
		面積	= 12.066137	

6 LOT

点 名	X	Y	(X-X0)*(YN-1-Y0)	(XN-1-X0)*(Y-Y0)
X0·Y0	- 151100.000	- 39300.000		
K4-14-2	- 151156.996	- 39314.562		
K4-14	- 151156.086	- 39304.687	+ 816.724332	+ 267.140252
63-29	- 151173.348	- 39304.423	+ 343.782076	+ 248.068378
63-39	- 151173.570	- 39314.694	+ 325.400110	+ 1077.775512
K4-14-2	- 151156.996	- 39314.562	+ 837.499224	+ 1071.326340
			+ 2323.405742	+ 2664.310482
		倍面積	= 340.904740	
		面積	= 170.452370	

7 LOT

点 名	X	Y	(X-X0)*(YN-1-Y0)	(XN-1-X0)*(Y-Y0)
X0·Y0	- 151100.000	- 39300.000		
63-25	- 151185.368	- 39332.567		
63-4	- 151173.873	- 39332.783	+ 2405.821991	+ 2798.619144
63-39	- 151173.570	- 39314.694	+ 2411.845310	+ 1085.489862
63-29	- 151173.348	- 39304.423	+ 1077.775512	+ 325.400110
63-30	- 151184.848	- 39304.247	+ 375.282704	+ 311.508956
63-25	- 151185.368	- 39332.567	+ 362.557896	+ 2763.244816
			+ 6633.283413	+ 7284.262888
		倍面積	= 650.979475	
		面積	= 325.489737	

8 LOT

点 名	X	Y	(X-X0)*(YN-1-Y0)	(XN-1-X0)*(Y-Y0)
X0·Y0	- 151100.000	- 39300.000		
63-24	- 151198.873	- 39332.313		
63-25	- 151185.368	- 39332.567	+ 2758.496184	+ 3219.996991
63-30	- 151184.848	- 39304.247	+ 2763.244816	+ 362.557896
K4-13-1	- 151196.258	- 39304.073	+ 408.807726	+ 345.585904
63-31	- 151198.388	- 39304.042	+ 400.734324	+ 389.074836
63-24	- 151198.873	- 39332.313	+ 399.644666	+ 3179.211444
			+ 6730.927716	+ 7496.427071
		倍面積	= 765.499355	
		面積	= 382.749677	

\* \* \* \* \* 各 筆 面 積 計 算 書 \* \* \* \* \*

9 LOT

点 名	X	Y	(X-X0)*(YN-1-Y0)	(XN-1-X0)*(Y-Y0)
X0-Y0	- 151100.000	- 39300.000		
63-23	- 151210.803	- 39332.088		
63-24	- 151198.873	- 39332.313	+ 3172.636824	+ 3580.377339
63-31	- 151198.388	- 39304.042	+ 3179.211444	+ 399.644666
63-32	- 151210.319	- 39303.866	+ 445.909398	+ 380.368008
63-23	- 151210.803	- 39332.088	+ 428.364398	+ 3539.916072
			+ 7226.122064	+ 7900.306085
		倍面積	= 674.184021	
		面積	= 337.092010	

10 LOT

点 名	X	Y	(X-X0)*(YN-1-Y0)	(XN-1-X0)*(Y-Y0)
X0-Y0	- 151200.000	- 39300.000		
63-22	- 151222.165	- 39331.874		
63-23	- 151210.803	- 39332.088	+ 344.334822	+ 711.230520
63-32	- 151210.319	- 39303.866	+ 331.116072	+ 41.764398
K4-13	- 151221.685	- 39303.698	+ 83.834210	+ 38.159662
63-36	- 151221.811	- 39313.035	+ 80.657078	+ 282.663975
63-22	- 151222.165	- 39331.874	+ 288.920775	+ 695.203814
			+ 1128.862957	+ 1769.022369
		倍面積	= 640.159412	
		面積	= 320.079706	

11 LOT

点 名	X	Y	(X-X0)*(YN-1-Y0)	(XN-1-X0)*(Y-Y0)
X0-Y0	- 151200.000	- 39300.000		
63-21	- 151230.479	- 39331.718		
63-22	- 151222.165	- 39331.874	+ 703.029470	+ 971.487646
63-36	- 151221.811	- 39313.035	+ 695.203814	+ 288.920775
63-37	- 151230.125	- 39312.896	+ 392.679375	+ 281.274656
63-21	- 151230.479	- 39331.718	+ 393.057184	+ 955.504750
			+ 2183.969843	+ 2497.187827
		倍面積	= 313.217984	
		面積	= 156.608992	

12 LOT

点 名	X	Y	(X-X0)*(YN-1-Y0)	(XN-1-X0)*(Y-Y0)
X0-Y0	- 151200.000	- 39300.000		
63-14	- 151238.804	- 39330.969		
63-10	- 151238.227	- 39331.572	+ 1183.851963	+ 1225.119888

\* \* \* \* \* 各 筆 面 積 計 算 書 \* \* \* \* \*

点 名	X	Y	(X-X0)*(YN-1-Y0)	(XN-1-X0)*(Y-Y0)
63-21	- 151230.479	- 39331.718	+ 962.282988	+ 1212.483986
63-37	- 151230.125	- 39312.896	+ 955.504750	+ 393.057184
63-20	- 151238.460	- 39312.756	+ 495.980160	+ 384.274500
63-14	- 151238.804	- 39330.969	+ 494.983824	+ 1191.067740
			+ 4092.603685	+ 4406.003298
		倍面積	= 313.399613	
		面積	= 156.699806	

13 LOT

点 名	X	Y	(X-X0)*(YN-1-Y0)	(XN-1-X0)*(Y-Y0)
X0-Y0	- 151200.000	- 39200.000		
63-19	- 151238.195	- 39298.750		
63-20	- 151238.460	- 39312.756	+ 3797.925000	+ 4306.715420
63-36	- 151221.811	- 39313.035	+ 2459.321116	+ 4347.326100
K4-13	- 151221.685	- 39303.698	+ 2451.163975	+ 2261.757078
63-33	- 151221.203	- 39299.065	+ 2198.708694	+ 2148.224525
63-19	- 151238.195	- 39298.750	+ 3783.787675	+ 2093.796250
			+ 14690.906460	+ 15157.819373
		倍面積	= 466.912913	
		面積	= 233.456456	

14 LOT

点 名	X	Y	(X-X0)*(YN-1-Y0)	(XN-1-X0)*(Y-Y0)
X0-Y0	- 151200.000	- 39200.000		
63-18	- 151237.901	- 39283.222		
63-19	- 151238.195	- 39298.750	+ 3178.664290	+ 3742.723750
63-33	- 151221.203	- 39299.065	+ 2093.796250	+ 3783.787675
K4-12	- 151220.485	- 39292.158	+ 2029.346525	+ 1954.026074
K4-11	- 151221.470	- 39286.313	+ 1978.632260	+ 1768.121805
63-34	- 151221.525	- 39283.532	+ 1857.887325	+ 1793.432040
63-18	- 151237.901	- 39283.222	+ 3165.946332	+ 1791.353550
			+ 14304.272982	+ 14833.444894
		倍面積	= 529.171912	
		面積	= 264.585956	

15 LOT

点 名	X	Y	(X-X0)*(YN-1-Y0)	(XN-1-X0)*(Y-Y0)
X0-Y0	- 151200.000	- 39200.000		
63-17	- 151237.837	- 39279.834		
63-18	- 151237.901	- 39283.222	+ 3025.788434	+ 3148.870814
63-34	- 151221.525	- 39283.532	+ 1791.353550	+ 3165.946332
K4-10	- 151221.571	- 39281.211	+ 1801.868772	+ 1748.066775



\* \* \* \* \* 各 筆 面 積 計 算 書 \* \* \* \* \*

点 名	X	Y	(X-X0)*(YN-1-Y0)	(XN-1-X0)*(Y-Y0)
63-35	- 151221.853	- 39280.141	+ 1774.703983	+ 1728.721511
63-17	- 151237.837	- 39279.834	+ 3032.295017	+ 1744.612402
			+ 11426.009756	+ 11536.217834
		倍面積	= 110.208078	
		面積	= 55.104039	

16 LOT

点 名	X	Y	(X-X0)*(YN-1-Y0)	(XN-1-X0)*(Y-Y0)
X0-Y0	- 151200.000	- 39200.000		
63-13	- 151237.709	- 39273.079		
63-17	- 151237.837	- 39279.834	+ 2765.090123	+ 3010.460306
63-35	- 151221.853	- 39280.141	+ 1744.612402	+ 3032.295017
K4-9	- 151223.948	- 39272.188	+ 1919.216668	+ 1577.524364
63-13	- 151237.709	- 39273.079	+ 2722.137292	+ 1750.095892
			+ 9151.056485	+ 9370.375579
		倍面積	= 219.319094	
		面積	= 109.659547	

λ10 1

点 名	X	Y	(X-X0)*(YN-1-Y0)	(XN-1-X0)*(Y-Y0)
X0-Y0	- 151200.000	- 39200.000		
63-13	- 151237.709	- 39273.079		
63-7	- 151237.746	- 39273.081	+ 2758.439934	+ 2755.811429
63-8	- 151239.223	- 39274.541	+ 2866.456063	+ 2813.624586
63-9	- 151240.286	- 39329.421	+ 3002.958726	+ 5076.279883
63-14	- 151238.804	- 39330.969	+ 5022.052484	+ 5276.217134
63-13	- 151237.709	- 39273.079	+ 4938.710021	+ 2835.757516
			+ 18588.617228	+ 18757.690548
		倍面積	= 169.073320	
		面積	= 84.536660	

λ10 2

点 名	X	Y	(X-X0)*(YN-1-Y0)	(XN-1-X0)*(Y-Y0)
X0-Y0	- 151100.000	- 39300.000		
63-15	- 151174.627	- 39372.057		
63-11	- 151174.653	- 39373.419	+ 5379.271221	+ 5479.039713
63-12	- 151172.524	- 39375.568	+ 5324.639556	+ 5641.377904
63-6	- 151159.816	- 39375.585	+ 4520.175488	+ 5481.726540
63-16	- 151159.852	- 39372.090	+ 4523.913420	+ 4312.135440
63-15	- 151174.627	- 39372.057	+ 5379.860430	+ 4312.755564
			+ 25127.860115	+ 25227.035161
		倍面積	= 99.175046	
		面積	= 49.587523	

\* \* \* \* \* 各 筆 面 積 計 算 書 \* \* \* \* \*

2 筆判

点 名	X	Y	(X-X0)*(YN-1-Y0)	(XN-1-X0)*(Y-Y0)
X0-Y0	- 151200.000	- 39200.000		
63-2	- 151239.197	- 39273.175		
63-7	- 151237.746	- 39273.081	+ 2762.063550	+ 2864.555957
63-8	- 151239.223	- 39274.541	+ 2866.456063	+ 2813.624586
63-2	- 151239.197	- 39273.175	+ 2921.783577	+ 2870.143025
			+ 8550.303190	+ 8548.323568
		倍面積	= 1.979622	
		面積	= 0.989811	

3 筆判

点 名	X	Y	(X-X0)*(YN-1-Y0)	(XN-1-X0)*(Y-Y0)
X0-Y0	- 151200.000	- 39300.000		
63-3	- 151240.327	- 39331.533		
63-9	- 151240.286	- 39329.421	+ 1270.338438	+ 1186.460667
63-10	- 151238.227	- 39331.572	+ 1124.676567	+ 1271.909592
63-3	- 151240.327	- 39331.533	+ 1273.204044	+ 1205.411991
			+ 3668.219049	+ 3663.782250
		倍面積	= 4.436799	
		面積	= 2.218399	

5 筆判

点 名	X	Y	(X-X0)*(YN-1-Y0)	(XN-1-X0)*(Y-Y0)
X0-Y0	- 151100.000	- 39300.000		
63-5	- 151174.694	- 39375.565		
63-11	- 151174.653	- 39373.419	+ 5641.153945	+ 5483.958786
63-12	- 151172.524	- 39375.568	+ 5324.639556	+ 5641.377904
63-5	- 151174.694	- 39375.565	+ 5644.476192	+ 5480.276060
			+ 16610.269693	+ 16605.612750
		倍面積	= 4.656943	
		面積	= 2.328471	