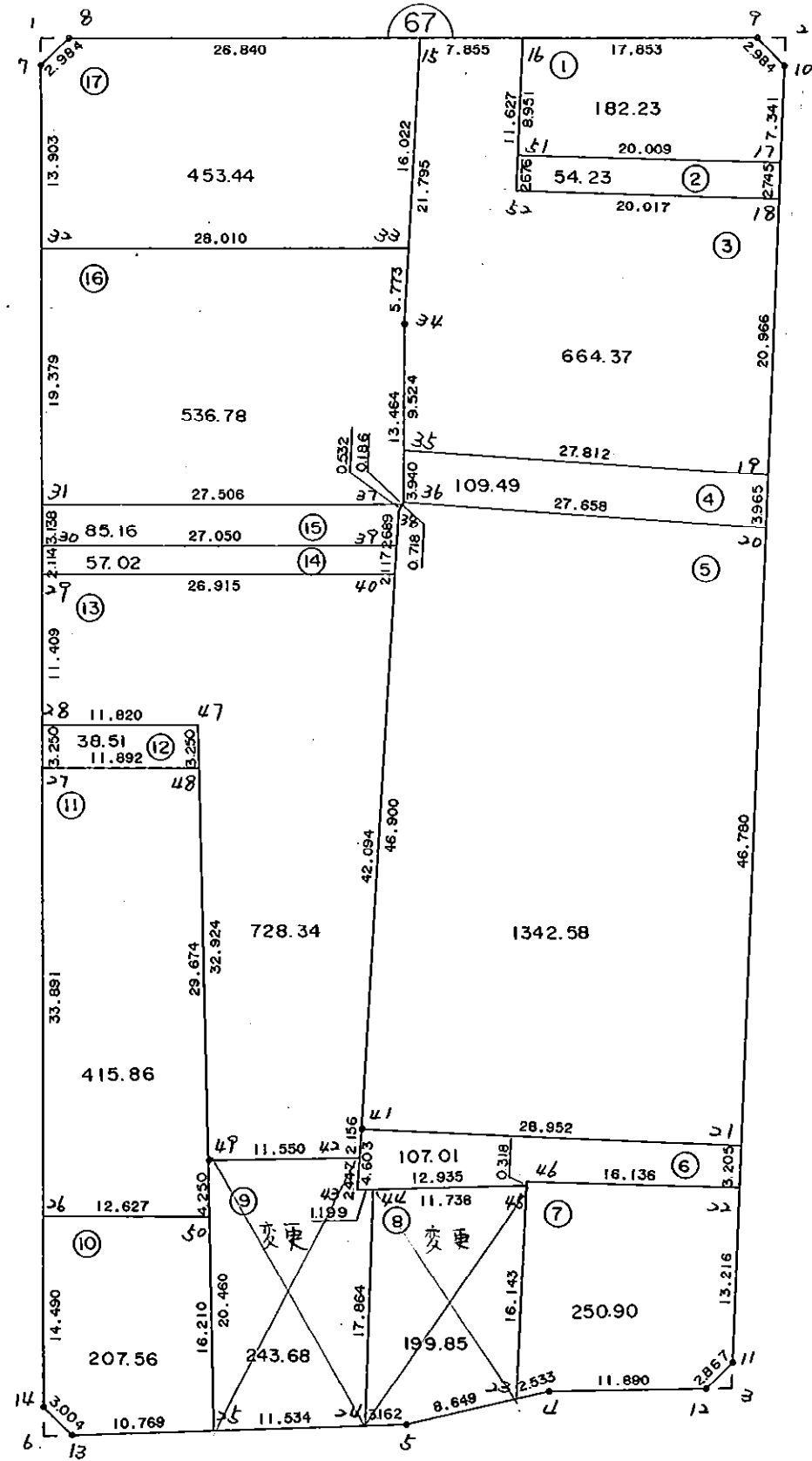


6 7 B L O C K



* * * 各筆面積 集計表 * * *

街区名・筆名	各筆面積	隅切面積
67 BLOCK	5677.08	
1 LOT	182.23	
2 LOT	54.23	
3 LOT	664.37	
4 LOT	109.49	
5 LOT	1342.58	
6 LOT	107.01	
7 LOT	250.90	
8 LOT	199.85	{ 8-1 LOT 37.53 m ² { 8-2 LOT 162.32 m ²
9 LOT	243.68	
10 LOT	207.56	{ 9-1 LOT 209.27 m ² { 9-2 LOT 15.84 m ² { 9-3 LOT 8.42 m ² { 9-4 LOT 10.15 m ²
11 LOT	415.86	
12 LOT	38.51	
13 LOT	728.34	
14 LOT	57.02	
15 LOT	85.16	
16 LOT	536.78	
17 LOT	453.44	
1 スミキリ		2.22
2 スミキリ		2.32
3 スミキリ		1.93
6 スミキリ		2.32
合計 =	5677.01	8.79

* * * * * 各 筆 面 積 計 算 書 * * * * *

67 BLOCK

点 名	X	Y	(X-X0)*(YN-1-Y0)	(XN-1-X0)*(Y-Y0)
X0·Y0	- 151200.000	- 39200.000		
67-7	- 151251.407	- 39331.339		
67-8	- 151249.273	- 39329.253	+ 6471.466547	+ 6644.508971
67-9	- 151248.285	- 39276.715	+ 6240.981105	+ 3779.978195
67-10	- 151250.415	- 39274.625	+ 3867.586725	+ 3603.268125
67-11	- 151348.603	- 39277.096	+ 11089.498875	+ 3886.794840
67-12	- 151350.663	- 39279.090	+ 11615.514648	+ 11753.011270
67-4	- 151351.054	- 39290.974	+ 11946.860860	+ 13706.415762
67-5	- 151353.721	- 39301.833	+ 13984.614254	+ 15382.281982
67-13	- 151355.007	- 39327.266	+ 15784.827831	+ 19563.456786
67-14	- 151352.963	- 39329.467	+ 19466.989158	+ 20068.291269
67-7	- 151251.407	- 39331.339	+ 6655.510069	+ 20090.007457

+107123.850072
 = 11354.164585
 = 5677.082292

倍面積
面積

1 LOT

点 名	X	Y	(X-X0)*(YN-1-Y0)	(XN-1-X0)*(Y-Y0)
X0·Y0	- 151200.000	- 39200.000		
67-16	- 151248.621	- 39294.565		
67-9	- 151248.285	- 39276.715	+ 4566.071025	+ 3729.960015
67-10	- 151250.415	- 39274.625	+ 3867.586725	+ 3603.268125
67-17	- 151257.754	- 39274.810	+ 4309.892250	+ 3771.546150
67-51	- 151257.569	- 39294.818	+ 4306.736890	+ 5476.118772
67-16	- 151248.621	- 39294.565	+ 4610.145978	+ 5444.012485

+ 21660.432868
 = 364.472679
 = 182.236339

倍面積
面積

2 LOT

点 名	X	Y	(X-X0)*(YN-1-Y0)	(XN-1-X0)*(Y-Y0)
X0·Y0	- 151200.000	- 39200.000		
67-17	- 151257.754	- 39274.810		
67-18	- 151260.498	- 39274.879	+ 4525.855380	+ 4324.561766
67-52	- 151260.244	- 39294.894	+ 4511.010476	+ 5740.897212
67-51	- 151257.569	- 39294.818	+ 5462.952686	+ 5712.215592
67-17	- 151257.754	- 39274.810	+ 5476.118772	+ 4306.736890

+ 19975.937314
 = 108.474146
 = 54.237073

倍面積
面積

* * * * * 各 筆 面 積 計 算 書 * * * * *

3 LOT

点 名	X	Y	(X-X0)*(YN-1-Y0)	(XN-1-X0)*(Y-Y0)
X0·Y0	- 151200.000	- 39200.000		
67-15	- 151248.769	- 39302.419		
67-16	- 151248.621	- 39294.565	+ 4979.714199	+ 4611.840485
67-52	- 151260.244	- 39294.894	+ 5696.973860	+ 4613.841174
67-18	- 151260.498	- 39274.879	+ 5740.897212	+ 4511.010476
67-19	- 151281.457	- 39275.406	+ 6099.418703	+ 4561.912188
67-35	- 151280.069	- 39303.183	+ 6037.683014	+ 8404.977631
67-34	- 151270.546	- 39303.315	+ 7279.147918	+ 8272.328735
67-15	- 151248.769	- 39302.419	+ 5038.569235	+ 7225.250774
			+ 40872.404141	+ 42201.161463
		倍面積	= 1328.757322	
		面積	= 664.378661	

4 LOT

点 名	X	Y	(X-X0)*(YN-1-Y0)	(XN-1-X0)*(Y-Y0)
X0·Y0	- 151200.000	- 39200.000		
67-19	- 151281.457	- 39275.406		
67-20	- 151285.421	- 39275.506	+ 6441.255926	+ 6150.492242
67-36	- 151284.009	- 39303.128	+ 6343.183554	+ 8809.296888
67-35	- 151280.069	- 39303.183	+ 8257.355832	+ 8668.300647
67-19	- 151281.457	- 39275.406	+ 8404.977631	+ 6037.683014
			+ 29446.772943	+ 29665.772791
		倍面積	= 218.999848	
		面積	= 109.499924	

5 LOT

点 名	X	Y	(X-X0)*(YN-1-Y0)	(XN-1-X0)*(Y-Y0)
X0·Y0	- 151200.000	- 39200.000		
67-20	- 151285.421	- 39275.506		
67-21	- 151332.187	- 39276.682	+ 9980.911622	+ 6550.253122
67-41	- 151331.474	- 39305.625	+ 10081.689268	+ 13962.251875
67-38	- 151284.622	- 39303.501	+ 8938.198750	+ 13607.690474
67-36	- 151284.009	- 39303.128	+ 8695.015509	+ 8726.897616
67-20	- 151285.421	- 39275.506	+ 8809.296888	+ 6343.183554
			+ 46505.112037	+ 49190.276641
		倍面積	= 2685.164604	
		面積	= 1342.582302	

6 LOT

点 名	X	Y	(X-X0)*(YN-1-Y0)	(XN-1-X0)*(Y-Y0)
X0·Y0	- 151300.000	- 39200.000		
67-21	- 151332.187	- 39276.682		
67-22	- 151335.391	- 39276.763	+ 2713.852662	+ 2470.770681

* * * * * 各 筆 面 積 計 算 書 * * * * *

点 名	X	Y	(X-X0)*(YN-1-Y0)	(XN-1-X0)*(Y-Y0)
67-46	- 151335.205	- 39292.898	+ 2702.441415	+ 3287.753118
67-45	- 151335.523	- 39292.912	+ 3300.015654	+ 3270.966960
67-43	- 151336.072	- 39305.835	+ 3351.521664	+ 3759.576705
67-41	- 151331.474	- 39305.625	+ 3331.050790	+ 3810.105000
67-21	- 151332.187	- 39276.682	+ 3399.751875	+ 2413.489268
			+ 18798.634060	+ 19012.661732
		倍面積	= 214.027672	
		面積	= 107.013836	

7 LOT

点 名	X	Y	(X-X0)*(YN-1-Y0)	(XN-1-X0)*(Y-Y0)
X0-Y0	- 151300.000	- 39200.000		
67-22	- 151335.391	- 39276.763		
67-11	- 151348.603	- 39277.096	+ 3730.912089	+ 2728.504536
67-12	- 151350.663	- 39279.090	+ 3905.914648	+ 3844.011270
67-4	- 151351.054	- 39290.974	+ 4037.860860	+ 4609.015762
67-23	- 151351.658	- 39293.434	+ 4699.534892	+ 4770.179436
67-45	- 151335.523	- 39292.912	+ 3319.055982	+ 4799.648096
67-46	- 151335.205	- 39292.898	+ 3270.966960	+ 3300.015654
67-22	- 151335.391	- 39276.763	+ 3287.753118	+ 2702.441415
			+ 26251.998549	+ 26753.816169
		倍面積	= 501.817620	
		面積	= 250.908810	

~~8 LOT~~

点 名	X	Y	(X-X0)*(YN-1-Y0)	(XN-1-X0)*(Y-Y0)
X0-Y0	- 151300.000	- 39200.000		
67-23	- 151351.658	- 39293.434		
67-5	- 151353.721	- 39301.833	+ 5019.367914	+ 5260.489114
67-24	- 151353.881	- 39304.991	+ 5486.863873	+ 5640.221511
67-44	- 151336.021	- 39304.637	+ 3781.880811	+ 5637.946197
67-45	- 151335.523	- 39292.912	+ 3717.020151	+ 3346.783152
67-23	- 151351.658	- 39293.434	+ 4799.648096	+ 3319.055982
			+ 22804.780845	+ 23204.495956
		倍面積	= 399.715111	
		面積	= 199.857555	

~~9 LOT~~

点 名	X	Y	(X-X0)*(YN-1-Y0)	(XN-1-X0)*(Y-Y0)
X0-Y0	- 151300.000	- 39300.000		
67-24	- 151353.881	- 39304.991		
67-25	- 151354.463	- 39316.511	+ 271.824833	+ 889.629191

* * * * * 各 筆 面 積 計 算 書 * * * * *

点 名	X	Y	(X-X0)*(YN-1-Y0)	(XN-1-X0)*(Y-Y0)
67-49	- 151334.017	- 39317.266	+ 561.654687	+ 940.358158
67-42	- 151333.628	- 39305.723	+ 580.621048	+ 194.679291
67-43	- 151336.072	- 39305.835	+ 206.440056	+ 196.219380
67-44	- 151336.021	- 39304.637	+ 210.182535	+ 167.265864
67-24	- 151353.881	- 39304.991	+ 249.846197	+ 179.780811
			+ 2080.569356	+ 2567.932695
		倍面積	= 487.363339	
		面積	= 243.681669	

10 LOT

点 名	X	Y	(X-X0)*(YN-1-Y0)	(XN-1-X0)*(Y-Y0)
X0-Y0	- 151300.000	- 39300.000		
67-25	- 151354.463	- 39316.511		
67-13	- 151355.007	- 39327.266	+ 908.220577	+ 1484.988158
67-14	- 151352.963	- 39329.467	+ 1444.089158	+ 1620.891269
67-26	- 151338.475	- 39329.734	+ 1133.742825	+ 1574.801842
67-50	- 151338.264	- 39317.109	+ 1137.741776	+ 658.268775
67-25	- 151354.463	- 39316.511	+ 931.807467	+ 631.776904
			+ 5555.601803	+ 5970.726948
		倍面積	= 415.125145	
		面積	= 207.562572	

11 LOT

点 名	X	Y	(X-X0)*(YN-1-Y0)	(XN-1-X0)*(Y-Y0)
X0-Y0	- 151300.000	- 39300.000		
67-26	- 151338.475	- 39329.734		
67-27	- 151304.590	- 39330.359	+ 136.479060	+ 1168.062525
67-48	- 151304.367	- 39318.469	+ 132.577753	+ 84.772710
67-49	- 151334.017	- 39317.266	+ 628.259973	+ 75.400622
67-50	- 151338.264	- 39317.109	+ 660.666224	+ 581.996853
67-26	- 151338.475	- 39329.734	+ 658.268775	+ 1137.741776
			+ 2216.251785	+ 3047.974486
		倍面積	= 831.722701	
		面積	= 415.861350	

12 LOT

点 名	X	Y	(X-X0)*(YN-1-Y0)	(XN-1-X0)*(Y-Y0)
X0-Y0	- 151300.000	- 39300.000		
67-27	- 151304.590	- 39330.359		
67-28	- 151301.342	- 39330.419	+ 40.741778	+ 139.623210
67-47	- 151301.120	- 39318.601	+ 34.069280	+ 24.962542
67-48	- 151304.367	- 39318.469	+ 81.230567	+ 20.685280

* * * * * 各 筆 面 積 計 算 書 * * * * *

点 名	X	Y	(X-X0)*(YN-1-Y0)	(XN-1-X0)*(Y-Y0)
67-27	- 151304.590	- 39330.359	+ 84.772710	+ 132.577753
			+ 240.814335	+ 317.848785
		倍面積	= 77.034450	
		面積	= 38.517225	

13 LOT

点 名	X	Y	(X-X0)*(YN-1-Y0)	(XN-1-X0)*(Y-Y0)
X0·Y0	- 151200.000	- 39300.000		
67-28	- 151301.342	- 39330.419		
67-29	- 151289.935	- 39330.629	+ 2735.732765	+ 3104.004118
67-40	- 151289.423	- 39303.719	+ 2738.937067	+ 334.468265
67-41	- 151331.474	- 39305.625	+ 488.951806	+ 503.004375
67-42	- 151333.628	- 39305.723	+ 751.657500	+ 752.425702
67-49	- 151334.017	- 39317.266	+ 766.979291	+ 2307.221048
67-47	- 151301.120	- 39318.601	+ 1745.937920	+ 2492.850217
67-28	- 151301.342	- 39330.419	+ 1885.062542	+ 3075.969280
			+ 11113.258891	+ 12569.943005
		倍面積	= 1456.684114	
		面積	= 728.342057	

14 LOT

点 名	X	Y	(X-X0)*(YN-1-Y0)	(XN-1-X0)*(Y-Y0)
X0·Y0	- 151200.000	- 39300.000		
67-29	- 151289.935	- 39330.629		
67-30	- 151287.821	- 39330.668	+ 2689.869409	+ 2758.126580
67-39	- 151287.308	- 39303.623	+ 2677.561744	+ 318.175483
67-40	- 151289.423	- 39303.719	+ 323.979529	+ 324.698452
67-29	- 151289.935	- 39330.629	+ 334.468265	+ 2738.937067
			+ 6025.878947	+ 6139.937582
		倍面積	= 114.058635	
		面積	= 57.029317	

15 LOT

点 名	X	Y	(X-X0)*(YN-1-Y0)	(XN-1-X0)*(Y-Y0)
X0·Y0	- 151200.000	- 39300.000		
67-30	- 151287.821	- 39330.668		
67-31	- 151284.684	- 39330.726	+ 2597.088912	+ 2698.388046
67-37	- 151284.168	- 39303.225	+ 2586.145968	+ 273.105900
67-38	- 151284.622	- 39303.501	+ 272.905950	+ 294.672168
67-39	- 151287.308	- 39303.623	+ 305.665308	+ 306.585506
67-30	- 151287.821	- 39330.668	+ 318.175483	+ 2677.561744
			+ 6079.981621	+ 6250.313364
		倍面積	= 170.331743	
		面積	= 85.165871	

* * * * * 各 筆 面 積 計 算 書 * * * * *

16 LOT

点 名	X	Y	(X-X0)*(YN-1-Y0)	(XN-1-X0)*(Y-Y0)
X0·Y0	- 151200.000	- 39300.000		
67-31	- 151284.684	- 39330.726		
67-32	- 151265.308	- 39331.083	+ 2006.653608	+ 2632.232772
67-33	- 151264.778	- 39303.078	+ 2013.494574	+ 201.018024
67-34	- 151270.546	- 39303.315	+ 217.140588	+ 214.739070
67-36	- 151284.009	- 39303.128	+ 278.489835	+ 220.667888
67-37	- 151284.168	- 39303.225	+ 263.277504	+ 270.929025
67-31	- 151284.684	- 39330.726	+ 273.105900	+ 2586.145968
			+ 5052.162009	+ 6125.732747
		倍面積	= 1073.570738	
		面積	= 536.785369	

17 LOT

点 名	X	Y	(X-X0)*(YN-1-Y0)	(XN-1-X0)*(Y-Y0)
X0·Y0	- 151200.000	- 39300.000		
67-32	- 151265.308	- 39331.083		
67-7	- 151251.407	- 39331.339	+ 1597.883781	+ 2046.687412
67-8	- 151249.273	- 39329.253	+ 1544.166547	+ 1503.808971
67-15	- 151248.769	- 39302.419	+ 1426.639557	+ 119.191387
67-33	- 151264.778	- 39303.078	+ 156.697982	+ 150.110982
67-32	- 151265.308	- 39331.083	+ 201.018024	+ 2013.494574
			+ 4926.405891	+ 5833.293326
		倍面積	= 906.887435	
		面積	= 453.443717	

1 区切り

点 名	X	Y	(X-X0)*(YN-1-Y0)	(XN-1-X0)*(Y-Y0)
X0·Y0	- 151200.000	- 39300.000		
67-1	- 151249.313	- 39331.378		
67-7	- 151251.407	- 39331.339	+ 1613.048846	+ 1545.420107
67-8	- 151249.273	- 39329.253	+ 1544.166547	+ 1503.808971
67-1	- 151249.313	- 39331.378	+ 1442.553189	+ 1546.088194
			+ 4599.768582	+ 4595.317272
		倍面積	= 4.451310	
		面積	= 2.225655	

2 区切り

点 名	X	Y	(X-X0)*(YN-1-Y0)	(XN-1-X0)*(Y-Y0)
X0·Y0	- 151200.000	- 39200.000		
67-2	- 151248.245	- 39274.570		
67-9	- 151248.285	- 39276.715	+ 3600.612450	+ 3701.115175

* * * * * 各 筆 面 積 計 算 書 * * * * *

点 名	X	Y	(X-X0)*(YN-1-Y0)	(XN-1-X0)*(Y-Y0)
67-10	- 151250.415	- 39274.625	+ 3867.586725	+ 3603.268125
67-2	- 151248.245	- 39274.570	+ 3600.283125	+ 3759.446550
			+ 11068.482300	+ 11063.829850
		倍面積	= 4.652450	
		面積	= 2.326225	

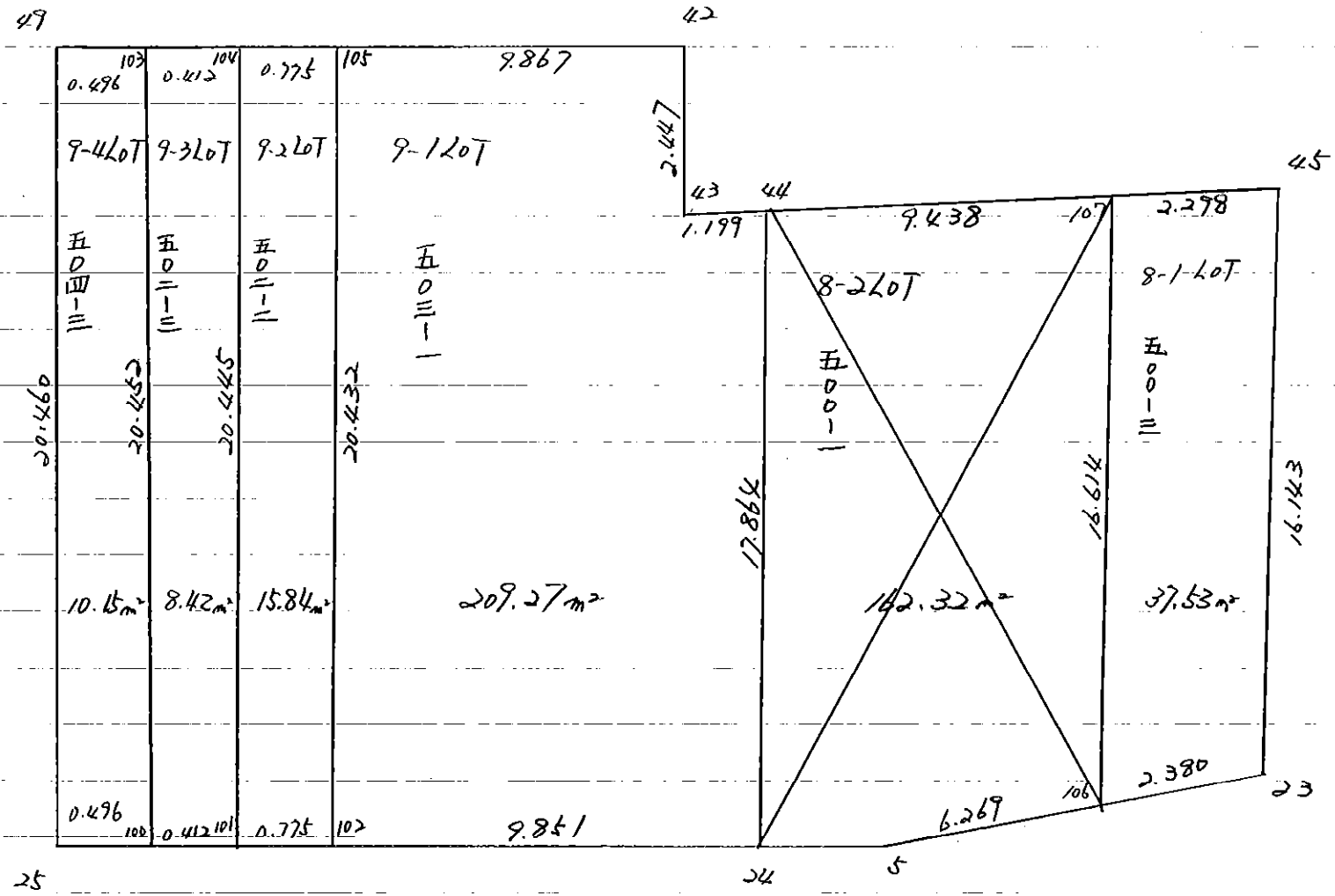
3 スミリ

点 名	X	Y	(X-X0)*(YN-1-Y0)	(XN-1-X0)*(Y-Y0)
X0-Y0	- 151300.000	- 39200.000		
67-3	- 151350.599	- 39277.146		
67-11	- 151348.603	- 39277.096	+ 3749.527038	+ 3900.980504
67-12	- 151350.663	- 39279.090	+ 3905.914648	+ 3844.011270
67-3	- 151350.599	- 39277.146	+ 4001.874910	+ 3908.447798
			+ 11657.316596	+ 11653.439572
		倍面積	= 3.877024	
		面積	= 1.938512	

6 スミリ

点 名	X	Y	(X-X0)*(YN-1-Y0)	(XN-1-X0)*(Y-Y0)
X0-Y0	- 151300.000	- 39300.000		
67-6	- 151355.116	- 39329.427		
67-13	- 151355.007	- 39327.266	+ 1618.690989	+ 1502.792856
67-14	- 151352.963	- 39329.467	+ 1444.089158	+ 1620.891269
67-6	- 151355.116	- 39329.427	+ 1624.103172	+ 1558.542201
			+ 4686.883319	+ 4682.226326
		倍面積	= 4.656993	
		面積	= 2.328496	

67 Block



* * * * 9-1 LOT

面積計算書

* * * * NO 1

点名	X	DX	DMD.1	Y	DY	DMD.2	DX * DMD.2	DY * DMD.1
67-24	- 151353.881			- 39304.991				
67-102	- 151354.378	+ 0.497	+ 0.497	- 39314.831	+ 9.840	+ 9.840	+ 4.890480	+ 4.890480
67-105	- 151333.960	- 20.418	- 19.424	- 39315.583	+ 0.752	+ 20.432	- 417.180576	- 14.606848
67-42	- 151333.628	- 0.332	- 40.174	- 39305.723	- 9.860	+ 11.324	- 3.759568	+ 396.115640
67-43	- 151336.072	+ 2.444	- 38.062	- 39305.835	+ 0.112	+ 1.576	+ 3.851744	- 4.262944
67-44	- 151336.021	- 0.051	- 35.669	- 39304.637	- 1.198	+ 0.490	- 0.024990	+ 42.731462
67-24	- 151353.881	+ 17.860	- 17.860	- 39304.991	+ 0.354	- 0.354	- 6.322440	- 6.322440
		+ 20.801			+ 11.058		+ 8.742224	+ 443.737582
		- 20.801			- 11.058		- 427.287574	- 25.192232
							+ 418.545350	+ 418.545350
						面積 =	209.272675	

* * * * 9-2 LOT

面 積 計 算 書 * * * * NO 1

点 名	X	DX	DMD.1	Y	DY	DMD.2	DX * DMD.2	DY * DMD.1
67-102	- 151354.378			- 39314.831				
67-101	- 151354.417	+ 0.039	+ 0.039	- 39315.605	+ 0.774	+ 0.774	+ 0.030186	+ 0.030186
67-104	- 151333.986	- 20.431	- 20.353	- 39316.358	+ 0.753	+ 2.301	- 47.011731	- 15.325809
67-105	- 151333.960	- 0.026	- 40.810	- 39315.583	- 0.775	+ 2.279	+ 0.059254	+ 31.627750
67-102	- 151354.378	+ 20.418	- 20.418	- 39314.831	- 0.752	+ 0.752	+ 15.354336	+ 15.354336
		+ 20.457			+ 1.527		+ 15.384522	+ 47.012272
		- 20.457			- 1.527		- 47.070985	- 15.325809
							- 31.686463	+ 31.686463
						面 積 =	15.843231	

* * * * 9-3 LOT

面積計算書

* * * * NO 1

点名	X	DX	DMD.1	Y	DY	DMD.2	DX * DMD.2	DY * DMD.1
67-101	- 151354.417			- 39315.605				
67-100	- 151354.438	+ 0.021	+ 0.021	- 39316.016	+ 0.411	+ 0.411	+ 0.008631	+ 0.008631
67-103	- 151334.000	- 20.438	- 20.396	- 39316.770	+ 0.754	+ 1.576	- 32.210288	- 15.378584
67-104	- 151333.986	- 0.014	- 40.848	- 39316.358	- 0.412	+ 1.918	+ 0.026852	+ 16.829376
67-101	- 151354.417	+ 20.431	- 20.431	- 39315.605	- 0.753	+ 0.753	+ 15.384543	+ 15.384543
		+ 20.452			+ 1.165		+ 15.393174	+ 32.222550
		- 20.452			- 1.165		- 32.237140	- 15.378584
							- 16.843966	+ 16.843966

面積 = 8.421983

* * * * 9-4 LOT

面積計算書

* * * * NO 1

点名	X	DX	DMD.1	Y	DY	DMD.2	DX * DMD.2	DY * DMD.1
67-100	- 151354.438			- 39316.016				
67-25	- 151354.463	+ 0.025	+ 0.025	- 39316.511	+ 0.495	+ 0.495	+ 0.012375	+ 0.012375
67-49	- 151334.017	- 20.446	- 20.396	- 39317.266	+ 0.755	+ 1.745	- 35.678270	- 15.398980
67-103	- 151334.000	- 0.017	- 40.859	- 39316.770	- 0.496	+ 2.004	+ 0.034068	+ 20.266064
67-100	- 151354.438	+ 20.438	- 20.438	- 39316.016	- 0.754	+ 0.754	+ 15.410252	+ 15.410252
		+ 20.463			+ 1.250		+ 15.422627	+ 35.688691
		- 20.463			- 1.250		- 35.712338	- 15.398980
							- 20.289711	+ 20.289711

面積 = ~~10.144855~~

10.15

確定後変更につき端数調整

* * * * 8-1 LOT

面積計算書 * * * * NO 1

点名	X	DX	DMD.1	Y	DY	DMD.2	DX * DMD.2	DY * DMD.1
67-23	- 151351.658			- 39293.434				
67-106	- 151352.226	+ 0.568	+ 0.568	- 39295.745	+ 2.311	+ 2.311	+ 1.312648	+ 1.312648
67-107	- 151335.621	- 16.605	- 15.469	- 39295.208	- 0.537	+ 4.085	+ 67.831425	+ 8.306853
67-45	- 151335.523	- 0.098	- 32.172	- 39292.912	- 2.296	+ 1.252	+ 0.122696	+ 73.866912
67-23	- 151351.658	+ 16.135	- 16.135	- 39293.434	+ 0.522	- 0.522	- 8.422470	- 8.422470
		+ 16.703			+ 2.833		+ 1.312648	+ 83.486413
		- 16.703			- 2.833		- 76.376591	- 8.422470
							- 75.063943	+ 75.063943
						面積 =	37.531971	

* * * * 8-2 LOT

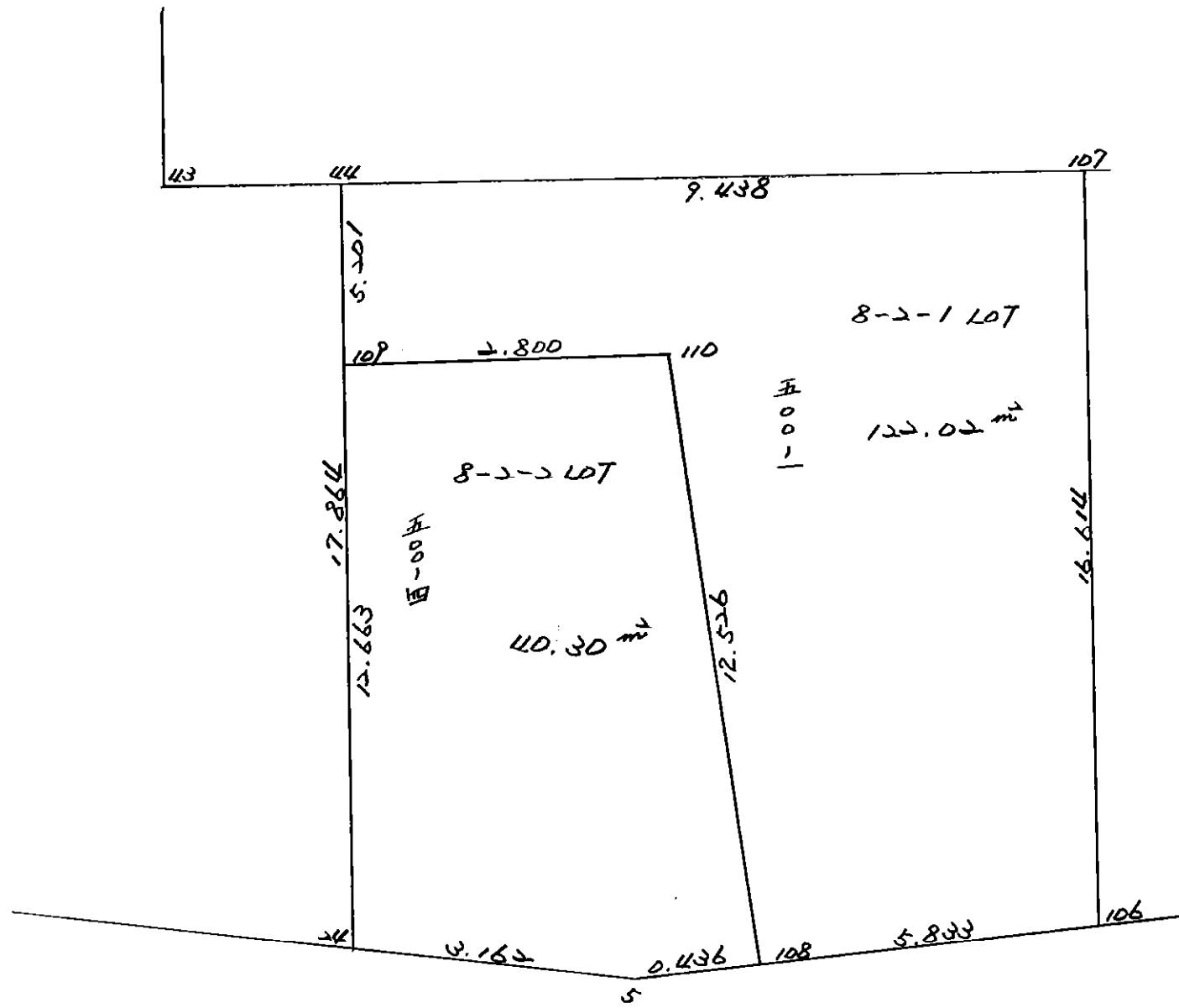
面積計算書

* * * * NO 1

点名	X	DX	DMD.1	Y	DY	DMD.2	DX * DMD.2	DY * DMD.1
67-106	- 151352.226			- 39295.745				
67-5	- 151353.721	+ 1.495	+ 1.495	- 39301.833	+ 6.088	+ 6.088	+ 9.101560	+ 9.101560
67-24	- 151353.881	+ 0.160	+ 3.150	- 39304.991	+ 3.158	+ 15.334	+ 2.453440	+ 9.947700
67-44	- 151336.021	- 17.860	- 14.550	- 39304.637	- 0.354	+ 18.138	- 323.944680	+ 5.150700
67-107	- 151335.621	- 0.400	- 32.810	- 39295.288	+ 9.429	+ 8.355	+ 3.342000	+ 309.365490
67-106	- 151352.226	+ 16.605	- 16.605	- 39295.745	+ 0.537	- 0.537	- 8.916885	- 8.916885
		+ 18.260			+ 9.783		+ 11.555000	+ 333.565450
		- 18.260			- 9.783		- 336.203565	- 8.916885
							- 324.648565	+ 324.648565

面積 = 162.324282

67 BL



* * * * * 8-2-1 LOT

面 積 計 算 書

* * * * * NO 1

点 名	X	DX	DMD.1	Y	DY	DMD.2	DX * DMD.2	DY * DMD.1
67-106	- 151352.226			- 39295.745				
67-108	- 151353.617	+ 1.391	+ 1.391	- 39301.410	+ 5.665	+ 5.665	+ 7.880015	+ 7.880015
67-110	- 151341.102	- 12.515	- 9.733	- 39301.943	+ 0.533	+ 11.863	- 148.465445	- 5.187689
67-109	- 151341.221	+ 0.119	- 22.129	- 39304.740	+ 2.797	+ 15.193	+ 1.807967	- 61.894813
67-44	- 151336.021	- 5.200	- 27.210	- 39304.637	- 0.103	+ 17.887	- 93.012400	+ 2.802630
67-107	- 151335.621	- 0.400	- 32.810	- 39295.208	- 9.429	+ 8.355	- 3.342000	+ 309.365490
67-106	- 151352.226	+ 16.605	- 16.605	- 39295.745	+ 0.537	- 0.537	- 8.916885	- 8.916885
		+ 18.115			+ 9.532		+ 9.687982	+ 320.048135
		- 18.115			- 9.532		- 253.736730	- 75.999387
							- 244.048748	+ 244.048748
						面 積 =	122.024374	

