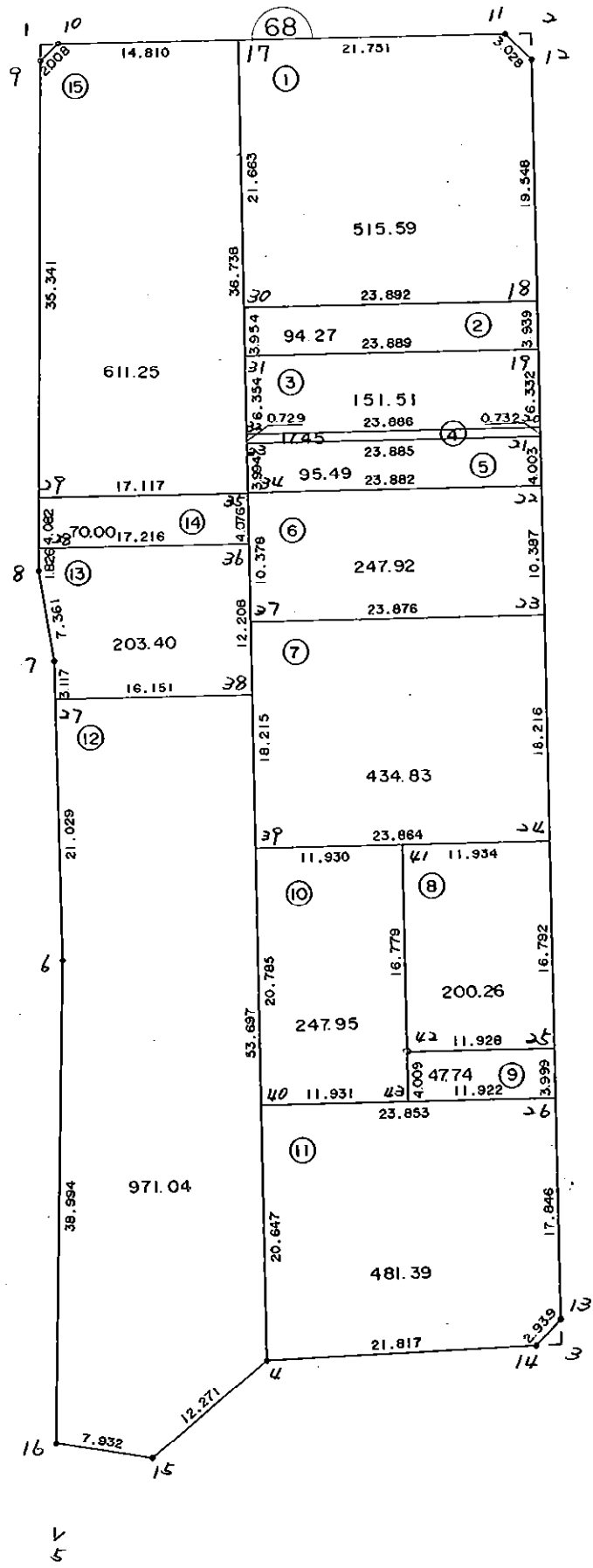


6 8 B L O C K

[



* * * 各筆面積 集計表 * * *

街区名・筆名	各筆面積	隅切面積
68 BLOCK	4390.18	
1 LOT	515.59	
2 LOT	94.27	
3 LOT	151.51	
4 LOT	17.45	
5 LOT	95.49	
6 LOT	247.92	
7 LOT	434.83	
8 LOT	200.26	
9 LOT	47.74	
10 LOT	247.95	
11 LOT	481.39	
12 LOT	971.04	
13 LOT	203.40	
14 LOT	70.00	
15 LOT	611.25	
1 ｽﾏｯﾌﾟ		0.98
2 ｽﾏｯﾌﾟ		2.29
3 ｽﾏｯﾌﾟ		2.09
5 ｽﾏｯﾌﾟ		30.79
合計 =	4390.09	36.15

* * * * * 各 筆 面 積 計 算 書 * * * * *

68 BLOCK

点 名	X	Y	(X-X0)*(YN-1-Y0)	(XN-1-X0)*(Y-Y0)
X0·Y0	- 151200.000	- 39300.000		
68-9	- 151251.580	- 39377.492		
68-10	- 151250.157	- 39376.075	+ 3886.766244	+ 3923.948500
68-11	- 151249.469	- 39339.521	+ 3763.354175	+ 1982.254797
68-12	- 151251.558	- 39337.329	+ 2037.623718	+ 1846.628301
68-13	- 151353.335	- 39335.483	+ 5723.842215	+ 1829.432514
68-14	- 151355.492	- 39337.479	+ 5517.322636	+ 5746.842465
68-4	- 151356.579	- 39359.269	+ 5868.424341	+ 9215.855348
68-15	- 151364.424	- 39368.705	+ 9745.246056	+ 10757.760195
68-16	- 151363.213	- 39376.544	+ 11213.549165	+ 12585.670656
68-6	- 151324.224	- 39375.899	+ 9508.601856	+ 12387.703487
68-7	- 151300.086	- 39376.501	+ 7596.427314	+ 9503.260224
68-8	- 151292.828	- 39377.726	+ 7101.434828	+ 7779.284436
68-9	- 151251.580	- 39377.492	+ 4009.107080	+ 7193.427376
			+ 75971.699628	+ 84752.068299
		倍面積	= 8780.368671	
		面積	= 4390.184335	

1 LOT

点 名	X	Y	(X-X0)*(YN-1-Y0)	(XN-1-X0)*(Y-Y0)
X0·Y0	- 151200.000	- 39300.000		
68-17	- 151249.879	- 39361.268		
68-11	- 151249.469	- 39339.521	+ 3030.866692	+ 1971.267959
68-12	- 151251.558	- 39337.329	+ 2037.623718	+ 1846.628301
68-18	- 151271.103	- 39336.974	+ 2654.203887	+ 1906.305492
68-30	- 151271.538	- 39360.862	+ 2645.046012	+ 4327.470786
68-17	- 151249.879	- 39361.268	+ 3035.735698	+ 4382.990184
			+ 13403.476007	+ 14434.662722
		倍面積	= 1031.186715	
		面積	= 515.593357	

2 LOT

点 名	X	Y	(X-X0)*(YN-1-Y0)	(XN-1-X0)*(Y-Y0)
X0·Y0	- 151200.000	- 39300.000		
68-18	- 151271.103	- 39336.974		
68-19	- 151275.041	- 39336.903	+ 2774.565934	+ 2623.914009
68-31	- 151275.491	- 39360.788	+ 2785.844373	+ 4561.592308
68-30	- 151271.538	- 39360.862	+ 4348.651944	+ 4594.533242
68-18	- 151271.103	- 39336.974	+ 4327.470786	+ 2645.046012
			+ 14236.533037	+ 14425.085571
		倍面積	= 188.552534	
		面積	= 94.276267	

* * * * * 各 筆 面 積 計 算 書 * * * * *

3 LOT

点 名	X	Y	(X-X0)*(YN-1-Y0)	(XN-1-X0)*(Y-Y0)
X0·Y0	- 151200.000	- 39300.000		
68-19	- 151275.041	- 39336.903		
68-20	- 151281.372	- 39336.788	+ 3002.870916	+ 2760.608308
68-32	- 151281.844	- 39360.669	+ 3010.877072	+ 4936.757868
68-31	- 151275.491	- 39360.788	+ 4579.963479	+ 4975.133072
68-19	- 151275.041	- 39336.903	+ 4561.592308	+ 2785.844373
			+ 15155.303775	+ 15458.343621
		倍面積	= 303.039846	
		面積	= 151.519923	

4 LOT

点 名	X	Y	(X-X0)*(YN-1-Y0)	(XN-1-X0)*(Y-Y0)
X0·Y0	- 151200.000	- 39300.000		
68-20	- 151281.372	- 39336.788		
68-21	- 151282.104	- 39336.775	+ 3020.441952	+ 2992.455300
68-33	- 151282.573	- 39360.655	+ 3036.622075	+ 4980.018120
68-32	- 151281.844	- 39360.669	+ 4964.247820	+ 5009.621337
68-20	- 151281.372	- 39336.788	+ 4936.757868	+ 3010.877072
			+ 15958.069715	+ 15992.971829
		倍面積	= 34.902114	
		面積	= 17.451057	

5 LOT

点 名	X	Y	(X-X0)*(YN-1-Y0)	(XN-1-X0)*(Y-Y0)
X0·Y0	- 151200.000	- 39300.000		
68-21	- 151282.104	- 39336.775		
68-22	- 151286.106	- 39336.702	+ 3166.548150	+ 3013.381008
68-34	- 151286.566	- 39360.580	+ 3177.145332	+ 5216.301480
68-33	- 151282.573	- 39360.655	+ 5002.272340	+ 5250.660730
68-21	- 151282.104	- 39336.775	+ 4980.018120	+ 3036.622075
			+ 16325.983942	+ 16516.965293
		倍面積	= 190.981351	
		面積	= 95.490675	

6 LOT

点 名	X	Y	(X-X0)*(YN-1-Y0)	(XN-1-X0)*(Y-Y0)
X0·Y0	- 151200.000	- 39300.000		
68-22	- 151286.106	- 39336.702		
68-23	- 151296.491	- 39336.514	+ 3541.412682	+ 3144.074484
68-37	- 151296.942	- 39360.386	+ 3539.740188	+ 5826.705526

* * * * * 各 筆 面 積 計 算 書 * * * * *

点 名	X	Y	(X-X0)*(YN-1-Y0)	(XN-1-X0)*(Y-Y0)
68-34	- 151286.566	- 39360.580	+ 5227.374476	+ 5872.746360
68-22	- 151286.106	- 39336.702	+ 5216.301480	+ 3177.145332
			+ 17524.828826	+ 18020.671702
		倍面積	= 495.842876	
		面積	= 247.921438	

7 LOT

点 名	X	Y	(X-X0)*(YN-1-Y0)	(XN-1-X0)*(Y-Y0)
X0·Y0	- 151200.000	- 39300.000		
68-23	- 151296.491	- 39336.514		
68-24	- 151314.705	- 39336.185	+ 4188.338370	+ 3491.526835
68-39	- 151315.155	- 39360.045	+ 4166.883675	+ 6887.461725
68-37	- 151296.942	- 39360.386	+ 5820.882390	+ 6953.749830
68-23	- 151296.491	- 39336.514	+ 5826.705526	+ 3539.740188
			+ 20002.809961	+ 20872.478578
		倍面積	= 869.668617	
		面積	= 434.834308	

8 LOT

点 名	X	Y	(X-X0)*(YN-1-Y0)	(XN-1-X0)*(Y-Y0)
X0·Y0	- 151300.000	- 39300.000		
68-24	- 151314.705	- 39336.185		
68-25	- 151331.494	- 39335.880	+ 1139.610390	+ 527.615400
68-42	- 151331.706	- 39347.806	+ 1137.611280	+ 1505.602164
68-41	- 151314.930	- 39348.117	+ 713.743580	+ 1525.597602
68-24	- 151314.705	- 39336.185	+ 707.560485	+ 540.242050
			+ 3698.525735	+ 4099.057216
		倍面積	= 400.531481	
		面積	= 200.265740	

9 LOT

点 名	X	Y	(X-X0)*(YN-1-Y0)	(XN-1-X0)*(Y-Y0)
X0·Y0	- 151300.000	- 39300.000		
68-25	- 151331.494	- 39335.880		
68-26	- 151335.492	- 39335.807	+ 1273.452960	+ 1127.705658
68-43	- 151335.714	- 39347.727	+ 1278.811198	+ 1693.926684
68-42	- 151331.706	- 39347.806	+ 1513.232262	+ 1707.343484
68-25	- 151331.494	- 39335.880	+ 1505.602164	+ 1137.611280
			+ 5571.098584	+ 5666.587106
		倍面積	= 95.488522	
		面積	= 47.744261	

* * * * * 各 筆 面 積 計 算 書 * * * * *

10 LOT

点 名	X	Y	(X-X0)*(YN-1-Y0)	(XN-1-X0)*(Y-Y0)
X0·Y0	- 151300.000	- 39300.000		
68-41	- 151314.930	- 39348.117		
68-42	- 151331.706	- 39347.806	+ 1525.597602	+ 713.743580
68-43	- 151335.714	- 39347.727	+ 1707.343484	+ 1513.232262
68-40	- 151335.936	- 39359.656	+ 1715.117472	+ 2130.554384
68-39	- 151315.155	- 39360.045	+ 904.086680	+ 2157.777120
68-41	- 151314.930	- 39348.117	+ 896.471850	+ 729.213135
			+ 6748.617088	+ 7244.520481
		倍面積	= 495.903393	
		面積	= 247.951696	

11 LOT

点 名	X	Y	(X-X0)*(YN-1-Y0)	(XN-1-X0)*(Y-Y0)
X0·Y0	- 151300.000	- 39300.000		
68-26	- 151335.492	- 39335.807		
68-13	- 151353.335	- 39335.483	+ 1909.766345	+ 1259.362636
68-14	- 151355.492	- 39337.479	+ 1969.022636	+ 1998.942465
68-4	- 151356.579	- 39359.269	+ 2120.524341	+ 3288.955348
68-40	- 151335.936	- 39359.656	+ 2129.890784	+ 3375.276824
68-26	- 151335.492	- 39335.807	+ 2117.310752	+ 1286.760352
			+ 10246.514858	+ 11209.297625
		倍面積	= 962.782767	
		面積	= 481.391383	

12 LOT

点 名	X	Y	(X-X0)*(YN-1-Y0)	(XN-1-X0)*(Y-Y0)
X0·Y0	- 151300.000	- 39300.000		
68-4	- 151356.579	- 39359.269		
68-15	- 151364.424	- 39368.705	+ 3818.346056	+ 3887.260195
68-16	- 151363.213	- 39376.544	+ 4343.049165	+ 4931.270656
68-6	- 151324.224	- 39375.899	+ 1854.201856	+ 4797.803487
68-27	- 151303.202	- 39376.423	+ 243.028598	+ 1851.270752
68-38	- 151302.891	- 39360.275	+ 220.938893	+ 193.000550
68-4	- 151356.579	- 39359.269	+ 3410.299225	+ 171.346679
			+ 13889.863793	+ 15831.952319
		倍面積	= 1942.088526	
		面積	= 971.044263	

13 LOT

点 名	X	Y	(X-X0)*(YN-1-Y0)	(XN-1-X0)*(Y-Y0)
X0·Y0	- 151200.000	- 39300.000		
68-27	- 151303.202	- 39376.423		
68-7	- 151300.086	- 39376.501	+ 7648.872378	+ 7895.056202

* * * * * 各 筆 面 積 計 算 書 * * * * *

点 名	X	Y	(X-X0)*(YN-1-Y0)	(XN-1-X0)*(Y-Y0)
68-8	- 151292.828	- 39377.726	+ 7101.434828	+ 7779.284436
68-28	- 151291.002	- 39377.716	+ 7073.221452	+ 7214.220848
68-36	- 151290.685	- 39360.503	+ 7047.675460	+ 5505.894006
68-38	- 151302.891	- 39360.275	+ 6225.214173	+ 5466.038375
68-27	- 151303.202	- 39376.423	+ 6220.500550	+ 7863.238893
			+ 41316.918841	+ 41723.732760
		倍面積	= 406.813919	
		面積	= 203.406959	

14 LOT

点 名	X	Y	(X-X0)*(YN-1-Y0)	(XN-1-X0)*(Y-Y0)
X0-Y0	- 151200.000	- 39300.000		
68-28	- 151291.002	- 39377.716		
68-29	- 151286.920	- 39377.693	+ 6755.074720	+ 7070.218386
68-35	- 151286.610	- 39360.579	+ 6728.990730	+ 5265.526680
68-36	- 151290.685	- 39360.503	+ 5493.606615	+ 5240.164830
68-28	- 151291.002	- 39377.716	+ 5505.894006	+ 7047.675460
			+ 24483.566071	+ 24623.585356
		倍面積	= 140.019285	
		面積	= 70.009642	

15 LOT

点 名	X	Y	(X-X0)*(YN-1-Y0)	(XN-1-X0)*(Y-Y0)
X0-Y0	- 151200.000	- 39300.000		
68-29	- 151286.920	- 39377.693		
68-9	- 151251.580	- 39377.492	+ 4007.404940	+ 6735.604640
68-10	- 151250.157	- 39376.075	+ 3886.766244	+ 3923.948500
68-17	- 151249.879	- 39361.268	+ 3794.544925	+ 3073.019076
68-35	- 151286.610	- 39360.579	+ 5306.421480	+ 3021.619941
68-29	- 151286.920	- 39377.693	+ 5265.526680	+ 6728.990730
			+ 22260.664269	+ 23483.182887
		倍面積	= 1222.518618	
		面積	= 611.259309	

1 区划

点 名	X	Y	(X-X0)*(YN-1-Y0)	(XN-1-X0)*(Y-Y0)
X0-Y0	- 151200.000	- 39300.000		
68-1	- 151250.183	- 39377.484		
68-9	- 151251.580	- 39377.492	+ 3996.624720	+ 3888.781036
68-10	- 151250.157	- 39376.075	+ 3886.766244	+ 3923.948500
68-1	- 151250.183	- 39377.484	+ 3817.671725	+ 3886.364988
			+ 11701.062689	+ 11699.094524
		倍面積	= 1.968165	
		面積	= 0.984082	

* * * * * 各 筆 面 積 計 算 書 * * * * *

2 区

点 名	X	Y	(X-XD)*(YN-1-YD)	(XN-1-XD)*(Y-YD)
XD・YD	- 151200.000	- 39300.000		
68-2	- 151249.429	- 39337.368		
68-11	- 151249.469	- 39339.521	+ 1848.557592	+ 1953.483509
68-12	- 151251.558	- 39337.329	+ 2037.623718	+ 1846.628301
68-2	- 151249.429	- 39337.368	+ 1845.135141	+ 1926.619344
			+ 5731.316451	+ 5726.731154
		倍面積	= 4.585297	
		面積	= 2.292648	

3 区

点 名	X	Y	(X-XD)*(YN-1-YD)	(XN-1-XD)*(Y-YD)
XD・YD	- 151300.000	- 39300.000		
68-3	- 151355.391	- 39335.446		
68-13	- 151353.335	- 39335.483	+ 1890.512410	+ 1965.438853
68-14	- 151355.492	- 39337.479	+ 1969.022636	+ 1998.942465
68-3	- 151355.391	- 39335.446	+ 2075.999289	+ 1966.969432
			+ 5935.534335	+ 5931.350750
		倍面積	= 4.183585	
		面積	= 2.091792	

5 区

点 名	X	Y	(X-XD)*(YN-1-YD)	(XN-1-XD)*(Y-YD)
XD・YD	- 151300.000	- 39300.000		
68-5	- 151371.049	- 39376.674		
68-15	- 151364.424	- 39368.705	+ 4939.645776	+ 4881.421545
68-16	- 151363.213	- 39376.544	+ 4343.049165	+ 4931.270656
68-5	- 151371.049	- 39376.674	+ 5438.374656	+ 4846.793562
			+ 14721.069597	+ 14659.485763
		倍面積	= 61.583834	
		面積	= 30.791917	