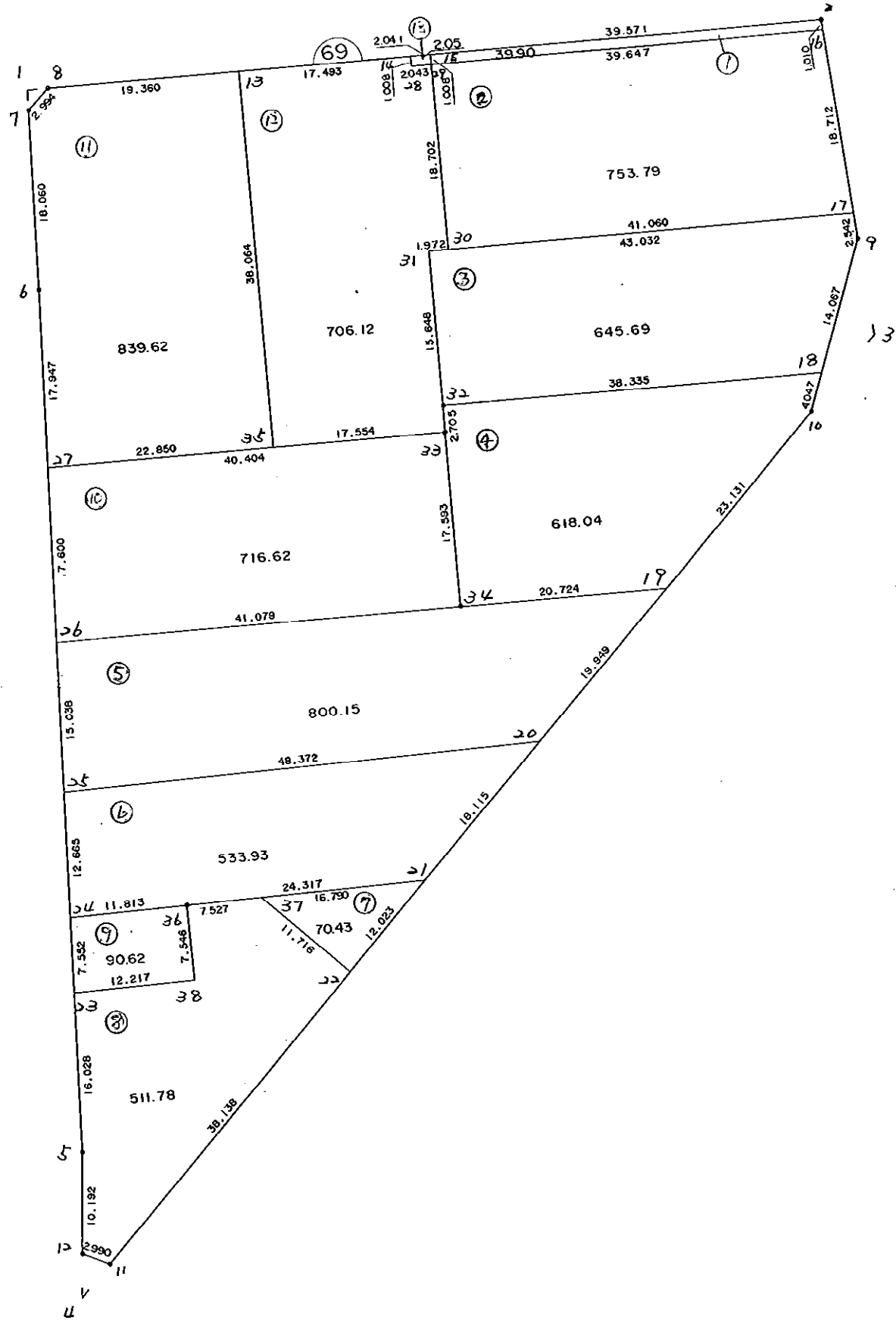


6 9 B L O C K



\* \* \* 各筆面積 集計表 \* \* \*

街区名・筆名	各筆面積	隅切面積
69 BLOCK	6328.74	
1 LOT	39.90	
2 LOT	753.79	
3 LOT	645.69	
4 LOT	618.04	
5 LOT	800.15	
6 LOT	533.93	
7 LOT	70.43	
8 LOT	511.78	
9 LOT	90.62	
10 LOT	716.62	
11 LOT	839.62	
12 LOT	706.12	
13 LOT	2.05	
1 スミキリ		2.16
3 スミキリ		37.52
4 スミキリ		6.23
合計 =	6328.74	45.91

\* \* \* \* \* 各 筆 面 積 計 算 書 \* \* \* \* \*

69 BLOCK

点 名	X	Y	(X-X0)*(YN-1-Y0)	(XN-1-X0)*(Y-Y0)
X0·Y0	- 151300.000	- 39100.000		
69-7	- 151358.553	- 39271.870		
69-8	- 151356.415	- 39269.774	+ 9696.046050	+ 9940.777022
69-2	- 151354.299	- 39191.337	+ 9218.558426	+ 5152.776855
69-9	- 151376.442	- 39189.016	+ 6981.982954	+ 4833.479784
69-10	- 151393.594	- 39194.842	+ 8331.363504	+ 7249.912164
69-11	- 151474.805	- 39271.033	+ 16578.855810	+ 16007.662602
69-12	- 151473.606	- 39273.772	+ 29692.354998	+ 30376.214460
69-5	- 151463.436	- 39273.111	+ 28400.600592	+ 30053.108266
69-6	- 151376.613	- 39271.986	+ 13262.553043	+ 28108.703896
69-7	- 151358.553	- 39271.870	+ 10070.296258	+ 13167.476310
			+132232.611635	+144890.111359
		倍面積	= 12657.499724	
		面積	= 6328.749862	

1 LOT

点 名	X	Y	(X-X0)*(YN-1-Y0)	(XN-1-X0)*(Y-Y0)
X0·Y0	- 151300.000	- 39100.000		
69-15	- 151355.366	- 39230.894		
69-2	- 151354.299	- 39191.337	+ 7107.413306	+ 5056.964342
69-16	- 151355.303	- 39191.232	+ 5051.210111	+ 4953.806368
69-29	- 151356.374	- 39230.865	+ 5143.112768	+ 7237.227095
69-15	- 151355.366	- 39230.894	+ 7245.471590	+ 7379.018356
			+ 24547.207775	+ 24627.016161
		倍面積	= 79.808386	
		面積	= 39.904193	

2 LOT

点 名	X	Y	(X-X0)*(YN-1-Y0)	(XN-1-X0)*(Y-Y0)
X0·Y0	- 151300.000	- 39100.000		
69-16	- 151355.303	- 39191.232		
69-17	- 151373.914	- 39189.281	+ 6743.322048	+ 4937.507143
69-30	- 151375.068	- 39230.325	+ 6702.146108	+ 9632.842050
69-29	- 151356.374	- 39230.865	+ 7346.941550	+ 9823.773820
69-16	- 151355.303	- 39191.232	+ 7237.227095	+ 5143.112768
			+ 28029.636801	+ 29537.235781
		倍面積	= 1507.598980	
		面積	= 753.799490	

3 LOT

点 名	X	Y	(X-X0)*(YN-1-Y0)	(XN-1-X0)*(Y-Y0)
X0·Y0	- 151300.000	- 39100.000		
69-17	- 151373.914	- 39189.281		
69-9	- 151376.442	- 39189.016	+ 6824.818202	+ 6579.528624

\* \* \* \* \* 各 筆 面 積 計 算 書 \* \* \* \* \*

点 名	X	Y	(X-X0)*(YN-1-Y0)	(XN-1-X0)*(Y-Y0)
69-18	- 151389.762	- 39193.540	+ 7990.254192	+ 7150.384680
69-32	- 151390.765	- 39231.862	+ 8490.158100	+ 11836.196844
69-31	- 151375.123	- 39232.296	+ 9905.869026	+ 12007.846440
69-17	- 151373.914	- 39189.281	+ 9778.526544	+ 6707.056563
			+ 42989.626064	+ 44281.013151
		倍面積	= 1291.387087	
		面積	= 645.693543	

4 LOT

点 名	X	Y	(X-X0)*(YN-1-Y0)	(XN-1-X0)*(Y-Y0)
X0·Y0	- 151300.000	- 39100.000		
69-18	- 151389.762	- 39193.540		
69-10	- 151393.594	- 39194.842	+ 8754.782760	+ 8513.207604
69-19	- 151410.463	- 39210.668	+ 10476.531846	+ 10357.860792
69-34	- 151411.057	- 39231.383	+ 12290.456076	+ 14512.960329
69-33	- 151393.470	- 39231.830	+ 12280.369010	+ 14640.644310
69-32	- 151390.765	- 39231.862	+ 11965.549950	+ 12325.141140
69-18	- 151389.762	- 39193.540	+ 11836.196844	+ 8490.158100
			+ 67603.886486	+ 68839.972275
		倍面積	= 1236.085789	
		面積	= 618.042894	

5 LOT

点 名	X	Y	(X-X0)*(YN-1-Y0)	(XN-1-X0)*(Y-Y0)
X0·Y0	- 151400.000	- 39200.000		
69-19	- 151410.463	- 39210.668		
69-20	- 151425.012	- 39224.318	+ 266.828016	+ 254.439234
69-25	- 151427.194	- 39272.641	+ 661.303692	+ 1816.896692
69-26	- 151412.157	- 39272.447	+ 883.096637	+ 1970.123718
69-34	- 151411.057	- 39231.383	+ 801.046479	+ 381.523131
69-19	- 151410.463	- 39210.668	+ 328.360329	+ 117.956076
			+ 2940.635153	+ 4540.938851
		倍面積	= 1600.303698	
		面積	= 800.151849	

6 LOT

点 名	X	Y	(X-X0)*(YN-1-Y0)	(XN-1-X0)*(Y-Y0)
X0·Y0	- 151400.000	- 39200.000		
69-20	- 151425.012	- 39224.318		
69-21	- 151438.223	- 39236.712	+ 929.506914	+ 918.240544
69-36	- 151439.315	- 39261.004	+ 1443.332280	+ 2331.755892
69-24	- 151439.858	- 39272.805	+ 2431.497432	+ 2862.328575

\* \* \* \* \* 各 筆 面 積 計 算 書 \* \* \* \* \*

点 名	X	Y	(X-X0)*(YN-1-Y0)	(XN-1-X0)*(Y-Y0)
69-25	- 151427.194	- 39272.641	+ 1979.859170	+ 2895.324978
69-20	- 151425.012	- 39224.318	+ 1816.896692	+ 661.303692
			+ 8601.092488	+ 9668.953681
		倍面積	= 1067.861193	
		面積	= 533.930596	

7 LOT

点 名	X	Y	(X-X0)*(YN-1-Y0)	(XN-1-X0)*(Y-Y0)
X0-Y0	- 151400.000	- 39200.000		
69-21	- 151438.223	- 39236.712		
69-22	- 151446.991	- 39244.938	+ 1725.133592	+ 1717.665174
69-37	- 151438.977	- 39253.485	+ 1751.548426	+ 2513.313635
69-21	- 151438.223	- 39236.712	+ 2044.357155	+ 1430.923624
			+ 5521.039173	+ 5661.902433
		倍面積	= 140.863260	
		面積	= 70.431630	

8 LOT

点 名	X	Y	(X-X0)*(YN-1-Y0)	(XN-1-X0)*(Y-Y0)
X0-Y0	- 151400.000	- 39200.000		
69-22	- 151446.991	- 39244.938		
69-11	- 151474.805	- 39271.033	+ 3361.587090	+ 3337.911703
69-12	- 151473.606	- 39273.772	+ 5228.454998	+ 5518.514460
69-5	- 151463.436	- 39273.111	+ 4679.800592	+ 5381.408266
69-23	- 151447.409	- 39272.903	+ 3466.119399	+ 4624.674708
69-38	- 151446.855	- 39260.699	+ 3415.870065	+ 2877.678891
69-36	- 151439.315	- 39261.004	+ 2386.381185	+ 2858.342420
69-37	- 151438.977	- 39253.485	+ 2377.752908	+ 2102.762775
69-22	- 151446.991	- 39244.938	+ 2513.313635	+ 1751.548426
			+ 27429.279872	+ 28452.841649
		倍面積	= 1023.561777	
		面積	= 511.780888	

9 LOT

点 名	X	Y	(X-X0)*(YN-1-Y0)	(XN-1-X0)*(Y-Y0)
X0-Y0	- 151400.000	- 39200.000		
69-23	- 151447.409	- 39272.903		
69-24	- 151439.858	- 39272.805	+ 2905.767774	+ 3451.612245
69-36	- 151439.315	- 39261.004	+ 2862.328575	+ 2431.497432
69-38	- 151446.855	- 39260.699	+ 2858.342420	+ 2386.381185
69-23	- 151447.409	- 39272.903	+ 2877.678891	+ 3415.870065
			+ 11504.117660	+ 11685.360927
		倍面積	= 181.243267	
		面積	= 90.621633	

\* \* \* \* \* 各 筆 面 積 計 算 書 \* \* \* \* \*

10 LOT

点 名	X	Y	(X-X0)*(YN-1-Y0)	(XN-1-X0)*(Y-Y0)
X0·Y0	- 151300.000	- 39200.000		
69-26	- 151412.157	- 39272.447		
69-27	- 151394.558	- 39272.219	+ 6850.443426	+ 8099.866383
69-33	- 151393.470	- 39231.830	+ 6750.309930	+ 3009.781140
69-34	- 151411.057	- 39231.383	+ 3534.944310	+ 2933.369010
69-26	- 151412.157	- 39272.447	+ 3519.823131	+ 8045.746479
			+ 20655.520797	+ 22088.763012
		倍面積	= 1433.242215	
		面積	= 716.621107	

11 LOT

点 名	X	Y	(X-X0)*(YN-1-Y0)	(XN-1-X0)*(Y-Y0)
X0·Y0	- 151300.000	- 39200.000		
69-27	- 151394.558	- 39272.219		
69-6	- 151376.613	- 39271.986	+ 5532.914247	+ 6806.852188
69-7	- 151358.553	- 39271.870	+ 4214.996258	+ 5506.176310
69-8	- 151356.415	- 39269.774	+ 4054.546050	+ 4085.477022
69-13	- 151355.893	- 39250.421	+ 3899.878182	+ 2844.500715
69-35	- 151393.943	- 39249.378	+ 4736.700003	+ 2759.884554
69-27	- 151394.558	- 39272.219	+ 4669.084924	+ 6784.469517
			+ 27108.119664	+ 28787.360306
		倍面積	= 1679.240642	
		面積	= 839.620321	

12 LOT

点 名	X	Y	(X-X0)*(YN-1-Y0)	(XN-1-X0)*(Y-Y0)
X0·Y0	- 151300.000	- 39200.000		
69-13	- 151355.893	- 39250.421		
69-14	- 151355.421	- 39232.934	+ 2794.382241	+ 1840.780062
69-28	- 151356.429	- 39232.907	+ 1858.432686	+ 1823.738847
69-29	- 151356.374	- 39230.865	+ 1855.099218	+ 1741.681085
69-30	- 151375.068	- 39230.325	+ 2316.973820	+ 1709.541550
69-31	- 151375.123	- 39232.296	+ 2278.104975	+ 2424.396128
69-32	- 151390.765	- 39231.862	+ 2931.346440	+ 2393.569026
69-33	- 151393.470	- 39231.830	+ 2978.141140	+ 2889.049950
69-35	- 151393.943	- 39249.378	+ 2990.205690	+ 4615.361660
69-13	- 151355.893	- 39250.421	+ 2759.884554	+ 4736.700003
			+ 22762.570764	+ 24174.818311
		倍面積	= 1412.247547	
		面積	= 706.123773	

\* \* \* \* \* 各 筆 面 積 計 算 書 \* \* \* \* \*

13 LOT

点 名	X	Y	(X-X0)*(YN-1-Y0)	(XN-1-X0)*(Y-Y0)
X0·Y0	- 151300.000	- 39200.000		
69-14	- 151355.421	- 39232.934		
69-15	- 151355.366	- 39230.894	+ 1823.423844	+ 1712.176374
69-29	- 151356.374	- 39230.865	+ 1741.618356	+ 1708.871590
69-28	- 151356.429	- 39232.907	+ 1741.681085	+ 1855.099218
69-14	- 151355.421	- 39232.934	+ 1823.738847	+ 1858.432686
			+ 7130.462132	+ 7134.579868
		倍面積	= 4.117736	
		面積	= 2.058868	

1 区切り

点 名	X	Y	(X-X0)*(YN-1-Y0)	(XN-1-X0)*(Y-Y0)
X0·Y0	- 151300.000	- 39200.000		
69-1	- 151356.471	- 39271.857		
69-7	- 151358.553	- 39271.870	+ 4207.442921	+ 4058.570770
69-8	- 151356.415	- 39269.774	+ 4054.546050	+ 4085.477022
69-1	- 151356.471	- 39271.857	+ 3940.207554	+ 4053.812655
			+ 12202.196525	+ 12197.860447
		倍面積	= 4.336078	
		面積	= 2.168039	

3 区切り

点 名	X	Y	(X-X0)*(YN-1-Y0)	(XN-1-X0)*(Y-Y0)
X0·Y0	- 151300.000	- 39100.000		
69-3	- 151386.284	- 39187.984		
69-9	- 151376.442	- 39189.016	+ 6725.672928	+ 7680.656544
69-10	- 151393.594	- 39194.842	+ 8331.363504	+ 7249.912164
69-3	- 151386.284	- 39187.984	+ 8183.347128	+ 8234.774496
			+ 23240.383560	+ 23165.343204
		倍面積	= 75.040356	
		面積	= 37.520178	

4 区切り

点 名	X	Y	(X-X0)*(YN-1-Y0)	(XN-1-X0)*(Y-Y0)
X0·Y0	- 151400.000	- 39200.000		
69-4	- 151478.031	- 39274.060		
69-11	- 151474.805	- 39271.033	+ 5540.058300	+ 5542.776023
69-12	- 151473.606	- 39273.772	+ 5228.454998	+ 5518.514460
69-4	- 151478.031	- 39274.060	+ 5756.502932	+ 5451.260360
			+ 16525.016230	+ 16512.550843
		倍面積	= 12.465387	
		面積	= 6.232693	