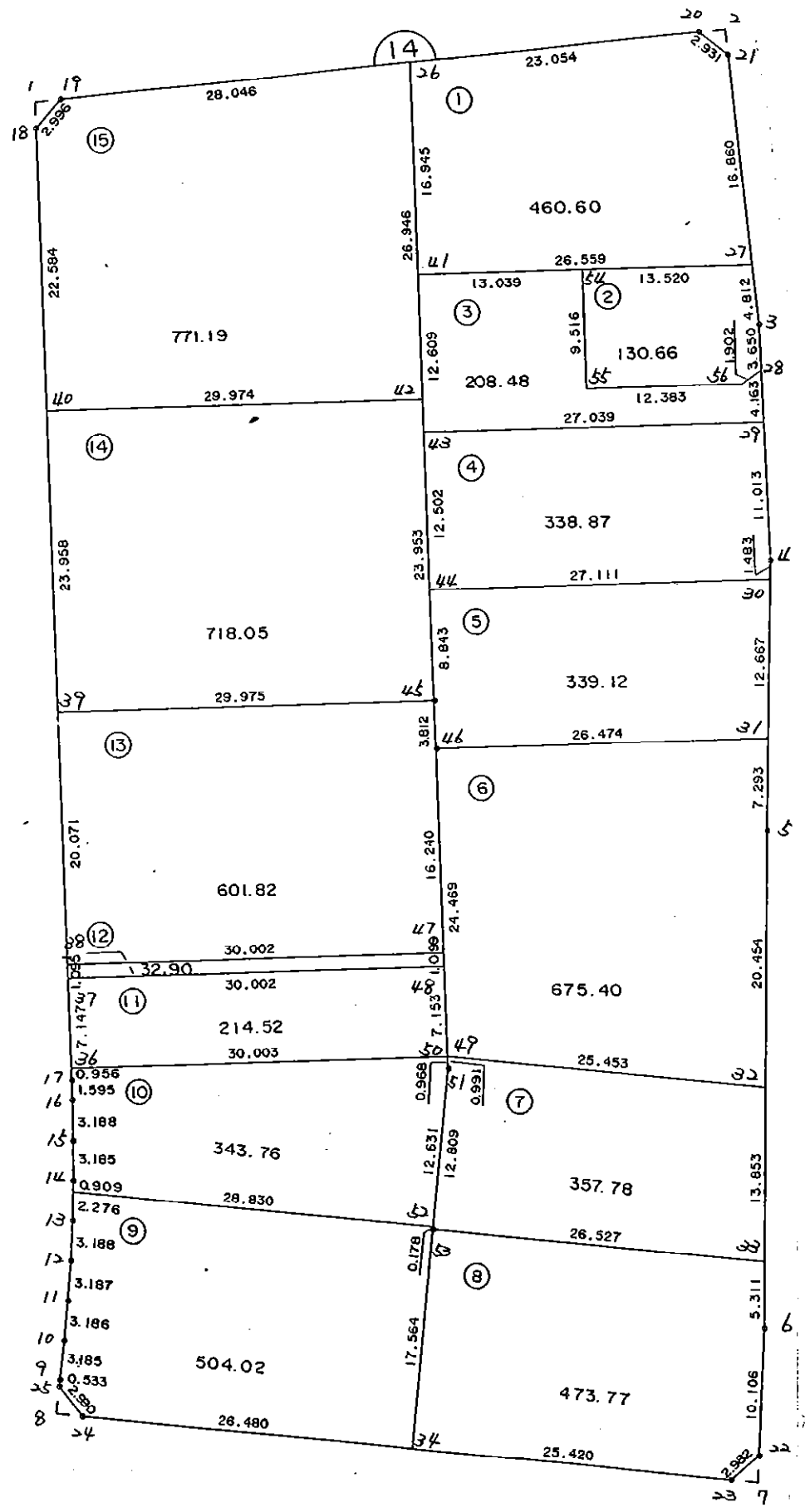


1 4 B L O C K

[



\* \* \* 各筆面積 集計表 \* \* \*

街区名・筆名	各筆面積	隅切面積
14 BLOCK	6170.99	
1 LOT	460.60	
2 LOT	130.66	
3 LOT	208.48	
4 LOT	338.87	
5 LOT	339.12	
6 LOT	675.40	
7 LOT	357.78	
8 LOT	473.77	
9 LOT	504.02	
10 LOT	343.76	
11 LOT	214.52	
12 LOT	32.90	
13 LOT	601.82	
14 LOT	718.05	
15 LOT	771.19	
1 スミキリ		2.07
2 スミキリ		2.14
7 スミキリ		2.33
8 スミキリ		2.26
合計 =	6170.94	8.80

\* \* \* \* \* 各 筆 面 積 計 算 書 \* \* \* \* \*

14 BLOCK

点 名	X	Y	(X-X0)*(YN-1-Y0)	(XN-1-X0)*(Y-Y0)
X0·Y0	- 150700.000	- 38500.000		
14-18	- 150796.741	- 38561.292		
14-19	- 150795.350	- 38558.639	+ 5844.192200	+ 5672.795499
14-20	- 150809.286	- 38509.477	+ 6408.421754	+ 903.631950
14-21	- 150811.827	- 38508.016	+ 1059.784479	+ 876.036576
14-3	- 150832.691	- 38513.879	+ 1063.651056	+ 1552.046933
14-4	- 150850.442	- 38520.149	+ 2087.984518	+ 2673.590959
14-5	- 150870.186	- 38528.515	+ 3429.077714	+ 4289.853630
14-6	- 150906.749	- 38543.770	+ 5895.447735	+ 7449.041220
14-22	- 150915.931	- 38547.991	+ 9451.299870	+ 9922.091259
14-23	- 150916.906	- 38550.809	+ 10409.535846	+ 10971.238179
14-24	- 150892.959	- 38596.854	+ 9804.053831	+ 21008.213724
14-25	- 150890.074	- 38597.641	+ 18409.427196	+ 18840.709719
14-9	- 150889.605	- 38597.388	+ 18513.221805	+ 18510.926712
14-10	- 150886.800	- 38595.879	+ 18192.078400	+ 18179.137795
14-11	- 150883.973	- 38594.410	+ 17639.147267	+ 17635.788000
14-12	- 150881.122	- 38592.986	+ 17099.728020	+ 17106.913378
14-13	- 150878.230	- 38591.645	+ 16572.894780	+ 16598.925690
14-14	- 150875.302	- 38590.391	+ 16065.551790	+ 16110.387930
14-15	- 150872.353	- 38589.188	+ 15579.160023	+ 15634.834776
14-16	- 150869.380	- 38588.036	+ 15106.663440	+ 15173.268708
14-17	- 150867.888	- 38587.472	+ 14780.187968	+ 14816.007360
14-18	- 150796.741	- 38561.292	+ 8462.128752	+ 10290.191296
			+231873.638444	+244215.631293
		倍面積	= 12341.992849	
		面積	= 6170.996424	

1 LOT

点 名	X	Y	(X-X0)*(YN-1-Y0)	(XN-1-X0)*(Y-Y0)
X0·Y0	- 150800.000	- 38500.000		
14-26	- 150802.998	- 38531.657		
14-20	- 150809.286	- 38509.477	+ 293.966902	+ 28.412046
14-21	- 150811.827	- 38508.016	+ 112.084479	+ 74.436576
14-27	- 150828.058	- 38512.577	+ 224.912928	+ 148.748179
14-41	- 150818.901	- 38537.508	+ 237.717877	+ 1052.399464
14-26	- 150802.998	- 38531.657	+ 112.448984	+ 598.348957
			+ 981.131170	+ 1902.345222
		倍面積	= 921.214052	
		面積	= 460.607026	

2 LOT

点 名	X	Y	(X-X0)*(YN-1-Y0)	(XN-1-X0)*(Y-Y0)
X0·Y0	- 150800.000	- 38500.000		
14-27	- 150828.058	- 38512.577		
14-3	- 150832.691	- 38513.879	+ 411.154707	+ 389.416982

\* \* \* \* \* 各 筆 面 積 計 算 書 \* \* \* \* \*

点 名	X	Y	(X-X0)*(Y1-Y0)	(XN-1-X0)*(Y-Y0)
14-28	- 150836.133	- 38515.095	+ 501.489907	+ 493.470645
14-56	- 150836.586	- 38516.942	+ 552.265670	+ 612.165286
14-55	- 150832.322	- 38528.568	+ 547.599324	+ 1045.188848
14-54	- 150823.397	- 38525.268	+ 668.405496	+ 816.712296
14-27	- 150828.058	- 38512.577	+ 708.969544	+ 294.264069
			+ 3389.884648	+ 3651.218126
		倍面積	= 261.333478	
		面積	= 130.666739	

3 LOT

点 名	X	Y	(X-X0)*(Y1-Y0)	(XN-1-X0)*(Y-Y0)
X0·Y0	- 150800.000	- 38500.000		
14-28	- 150836.133	- 38515.095		
14-29	- 150840.058	- 38516.481	+ 604.675510	+ 595.507973
14-43	- 150830.734	- 38541.862	+ 506.527054	+ 1676.907996
14-41	- 150818.901	- 38537.508	+ 791.233662	+ 1152.770872
14-54	- 150823.397	- 38525.268	+ 877.574676	+ 477.590468
14-55	- 150832.322	- 38528.568	+ 816.712296	+ 668.405496
14-56	- 150836.586	- 38516.942	+ 1045.188848	+ 547.599324
14-28	- 150836.133	- 38515.095	+ 612.165286	+ 552.265670
			+ 5254.077332	+ 5671.047799
		倍面積	= 416.970467	
		面積	= 208.485233	

4 LOT

点 名	X	Y	(X-X0)*(Y1-Y0)	(XN-1-X0)*(Y-Y0)
X0·Y0	- 150800.000	- 38500.000		
14-29	- 150840.058	- 38516.481		
14-4	- 150850.442	- 38520.149	+ 831.334602	+ 807.128642
14-30	- 150851.807	- 38520.728	+ 1043.859243	+ 1045.561776
14-44	- 150842.467	- 38546.179	+ 880.255976	+ 2392.395453
14-43	- 150830.734	- 38541.862	+ 1419.265386	+ 1777.753554
14-29	- 150840.058	- 38516.481	+ 1676.907996	+ 506.527054
			+ 5851.623203	+ 6529.366479
		倍面積	= 677.743276	
		面積	= 338.871638	

5 LOT

点 名	X	Y	(X-X0)*(Y1-Y0)	(XN-1-X0)*(Y-Y0)
X0·Y0	- 150800.000	- 38500.000		
14-30	- 150851.807	- 38520.728		
14-31	- 150863.471	- 38525.670	+ 1315.626888	+ 1329.885690

\* \* \* \* \* 各 筆 面 積 計 算 書 \* \* \* \* \*

点 名	X	Y	(X-X0)*(YN-1-Y0)	(XN-1-X0)*(Y-Y0)
14-46	- 150854.352	- 38550.524	+ 1395.215840	+ 3206.808804
14-45	- 150850.766	- 38549.232	+ 2564.901384	+ 2675.857664
14-44	- 150842.467	- 38546.179	+ 2090.735344	+ 2344.323114
14-30	- 150851.807	- 38520.728	+ 2392.395453	+ 880.255976
			+ 9758.874909	+ 10437.131248
		倍面積	= 678.256339	
		面積	= 339.128169	

6 LOT

点 名	X	Y	(X-X0)*(YN-1-Y0)	(XN-1-X0)*(Y-Y0)
X0·Y0	- 150800.000	- 38500.000		
14-31	- 150863.471	- 38525.670		
14-5	- 150870.186	- 38528.515	+ 1801.674620	+ 1809.875565
14-32	- 150889.063	- 38536.391	+ 2539.631445	+ 2554.138726
14-49	- 150877.317	- 38558.972	+ 2813.642947	+ 5252.223236
14-46	- 150854.352	- 38550.524	+ 3205.246144	+ 3906.364108
14-31	- 150863.471	- 38525.670	+ 3206.808804	+ 1395.215840
			+ 13567.003960	+ 14917.817475
		倍面積	= 1350.813515	
		面積	= 675.406757	

7 LOT

点 名	X	Y	(X-X0)*(YN-1-Y0)	(XN-1-X0)*(Y-Y0)
X0·Y0	- 150800.000	- 38500.000		
14-32	- 150889.063	- 38536.391		
14-33	- 150901.848	- 38541.725	+ 3706.350568	+ 3716.153675
14-53	- 150889.596	- 38565.253	+ 3738.393100	+ 6645.887544
14-51	- 150878.247	- 38559.314	+ 5105.851491	+ 5314.297144
14-49	- 150877.317	- 38558.972	+ 4585.980538	+ 4614.382084
14-32	- 150889.063	- 38536.391	+ 5252.223236	+ 2813.642947
			+ 22388.798933	+ 23104.363394
		倍面積	= 715.564461	
		面積	= 357.782230	

8 LOT

点 名	X	Y	(X-X0)*(YN-1-Y0)	(XN-1-X0)*(Y-Y0)
X0·Y0	- 150800.000	- 38500.000		
14-33	- 150901.848	- 38541.725		
14-6	- 150906.749	- 38543.770	+ 4454.102025	+ 4457.886960
14-22	- 150915.931	- 38547.991	+ 5074.299870	+ 5122.991259
14-23	- 150916.906	- 38550.809	+ 5610.435846	+ 5890.338179
14-34	- 150905.177	- 38573.361	+ 5343.938193	+ 8576.341066

\* \* \* \* \* 各 筆 面 積 計 算 書 \* \* \* \* \*

点 名	X	Y	(X-X0)*(Yn-1-Y0)	(Xn-1-X0)*(Y-Y0)
14-53	- 150889.596	- 38565.253	+ 6572.852156	+ 6863.114781
14-33	- 150901.848	- 38541.725	+ 6645.887544	+ 3738.393100
			+ 33701.515634	+ 34649.065345
		倍面積	= 947.549711	
		面積	= 473.774855	

9 LOT

点 名	X	Y	(X-X0)*(Yn-1-Y0)	(Xn-1-X0)*(Y-Y0)
X0-Y0	- 150800.000	- 38500.000		
14-34	- 150905.177	- 38573.361		
14-24	- 150892.959	- 38596.854	+ 6819.565199	+ 10186.813158
14-25	- 150890.074	- 38597.641	+ 8724.027196	+ 9076.609719
14-9	- 150889.605	- 38597.388	+ 8749.121805	+ 8772.126712
14-10	- 150886.800	- 38595.879	+ 8453.278400	+ 8591.237795
14-11	- 150883.973	- 38594.410	+ 8051.247267	+ 8194.788000
14-12	- 150881.122	- 38592.986	+ 7658.728020	+ 7808.313378
14-13	- 150878.230	- 38591.645	+ 7274.294780	+ 7434.425690
14-35	- 150876.138	- 38590.749	+ 6977.667010	+ 7099.294270
14-52	- 150889.438	- 38565.170	+ 8116.409062	+ 4961.913460
14-53	- 150889.596	- 38565.253	+ 5838.971320	+ 5836.097814
14-34	- 150905.177	- 38573.361	+ 6863.114781	+ 6572.852156
			+ 83526.424840	+ 84534.472152
		倍面積	= 1008.047312	
		面積	= 504.023656	

10 LOT

点 名	X	Y	(X-X0)*(Yn-1-Y0)	(Xn-1-X0)*(Y-Y0)
X0-Y0	- 150800.000	- 38500.000		
14-35	- 150876.138	- 38590.749		
14-14	- 150875.302	- 38590.391	+ 6833.581198	+ 6882.189958
14-15	- 150872.353	- 38589.188	+ 6540.060023	+ 6716.034776
14-16	- 150869.380	- 38588.036	+ 6187.863440	+ 6369.668708
14-17	- 150867.888	- 38587.472	+ 5976.587968	+ 6068.807360
14-36	- 150866.991	- 38587.142	+ 5859.836752	+ 5915.896096
14-50	- 150877.339	- 38558.980	+ 6739.475138	+ 3951.129180
14-51	- 150878.247	- 38559.314	+ 4615.008060	+ 4587.285446
14-52	- 150889.438	- 38565.170	+ 5304.925532	+ 5099.356990
14-35	- 150876.138	- 38590.749	+ 4961.913460	+ 8116.409062
			+ 53019.251571	+ 53706.777576
		倍面積	= 687.526005	
		面積	= 343.763002	

\* \* \* \* \* 各 筆 面 積 計 算 書 \* \* \* \* \*

11 LOT

点 名	X	Y	(X-X0)*(YN-1-Y0)	(XN-1-X0)*(Y-Y0)
X0·Y0	- 150800.000	- 38500.000		
14-36	- 150866.991	- 38587.142		
14-37	- 150860.284	- 38584.674	+ 5253.268328	+ 5672.395934
14-48	- 150870.625	- 38556.510	+ 5980.101250	+ 3406.648840
14-50	- 150877.339	- 38558.980	+ 4370.426890	+ 4165.462500
14-36	- 150866.991	- 38587.142	+ 3951.129180	+ 6739.475138
			+ 19554.925648	+ 19983.982412
		倍面積	= 429.056764	
		面積	= 214.528382	

12 LOT

点 名	X	Y	(X-X0)*(YN-1-Y0)	(XN-1-X0)*(Y-Y0)
X0·Y0	- 150800.000	- 38500.000		
14-37	- 150860.284	- 38584.674		
14-38	- 150859.256	- 38584.296	+ 5017.442544	+ 5081.700064
14-47	- 150869.594	- 38556.131	+ 5866.495824	+ 3326.098536
14-48	- 150870.625	- 38556.510	+ 3964.251875	+ 3932.756940
14-37	- 150860.284	- 38584.674	+ 3406.648840	+ 5980.101250
			+ 18254.839083	+ 18320.656790
		倍面積	= 65.817707	
		面積	= 32.908853	

13 LOT

点 名	X	Y	(X-X0)*(YN-1-Y0)	(XN-1-X0)*(Y-Y0)
X0·Y0	- 150800.000	- 38500.000		
14-38	- 150859.256	- 38584.296		
14-39	- 150840.420	- 38577.365	+ 3407.244320	+ 4584.340440
14-45	- 150850.766	- 38549.232	+ 3927.511590	+ 1989.957440
14-46	- 150854.352	- 38550.524	+ 2675.857664	+ 2564.901384
14-47	- 150869.594	- 38556.131	+ 3516.167256	+ 3050.832112
14-38	- 150859.256	- 38584.296	+ 3326.098536	+ 5866.495824
			+ 16852.879366	+ 18056.527200
		倍面積	= 1203.647834	
		面積	= 601.823917	

14 LOT

点 名	X	Y	(X-X0)*(YN-1-Y0)	(XN-1-X0)*(Y-Y0)
X0·Y0	- 150800.000	- 38500.000		
14-39	- 150840.420	- 38577.365		
14-40	- 150817.936	- 38569.091	+ 1387.618640	+ 2792.658220



\* \* \* \* \* 各 筆 面 積 計 算 書 \* \* \* \* \*

点 名	X	Y	(X-X0)*(YN-1-Y0)	(XN-1-X0)*(Y-Y0)
14-42	- 150828.286	- 38540.961	+ 1954.308026	+ 734.676496
14-45	- 150850.766	- 38549.232	+ 2079.426126	+ 1392.576352
14-39	- 150840.420	- 38577.365	+ 1989.957440	+ 3927.511590
			+ 7411.310232	+ 8847.422658
		倍面積	= 1436.112426	
		面積	= 718.056213	

15 LOT

点 名	X	Y	(X-X0)*(YN-1-Y0)	(XN-1-X0)*(Y-Y0)
X0·Y0	- 150700.000	- 38500.000		
14-40	- 150817.936	- 38569.091		
14-18	- 150796.741	- 38561.292	+ 6683.932431	+ 7228.533312
14-19	- 150795.350	- 38558.639	+ 5844.192200	+ 5672.795499
14-26	- 150802.998	- 38531.657	+ 6039.699722	+ 3018.494950
14-42	- 150828.286	- 38540.961	+ 4061.149902	+ 4218.901078
14-40	- 150817.936	- 38569.091	+ 4830.776496	+ 8863.408026
			+ 27459.750751	+ 29002.132865
		倍面積	= 1542.382114	
		面積	= 771.191057	

1 区切り

点 名	X	Y	(X-X0)*(YN-1-Y0)	(XN-1-X0)*(Y-Y0)
X0·Y0	- 150700.000	- 38500.000		
14-1	- 150794.800	- 38560.578		
14-18	- 150796.741	- 38561.292	+ 5860.376298	+ 5810.481600
14-19	- 150795.350	- 38558.639	+ 5844.192200	+ 5672.795499
14-1	- 150794.800	- 38560.578	+ 5558.977200	+ 5776.112300
			+ 17263.545698	+ 17259.389399
		倍面積	= 4.156299	
		面積	= 2.078149	

2 区切り

点 名	X	Y	(X-X0)*(YN-1-Y0)	(XN-1-X0)*(Y-Y0)
X0·Y0	- 150800.000	- 38500.000		
14-2	- 150809.857	- 38507.463		
14-20	- 150809.286	- 38509.477	+ 69.301418	+ 93.414789
14-21	- 150811.827	- 38508.016	+ 112.084479	+ 74.436576
14-2	- 150809.857	- 38507.463	+ 79.013712	+ 88.264901
			+ 260.399609	+ 256.116266
		倍面積	= 4.283343	
		面積	= 2.141671	

\* \* \* \* \* 各 筆 面 積 計 算 書 \* \* \* \* \*

7 区画

点 名	X	Y	(X-X0)*(YN-1-Y0)	(XN-1-X0)*(Y-Y0)
X0・Y0	- 150900.000	- 38500.000		
14-7	- 150917.901	- 38548.896		
14-22	- 150915.931	- 38547.991	+ 778.962176	+ 859.086891
14-23	- 150916.906	- 38550.809	+ 811.335846	+ 809.438179
14-7	- 150917.901	- 38548.896	+ 909.531909	+ 826.635776
			+ 2499.829931	+ 2495.160846
		倍面積	= 4.669085	
		面積	= 2.334542	

8 区画

点 名	X	Y	(X-X0)*(YN-1-Y0)	(XN-1-X0)*(Y-Y0)
X0・Y0	- 150800.000	- 38500.000		
14-8	- 150892.007	- 38598.685		
14-24	- 150892.959	- 38596.854	+ 9173.658915	+ 8911.245978
14-25	- 150890.074	- 38597.641	+ 8724.027196	+ 9076.609719
14-8	- 150892.007	- 38598.685	+ 8983.655487	+ 8888.952690
			+ 26881.341598	+ 26876.808387
		倍面積	= 4.533211	
		面積	= 2.266605	