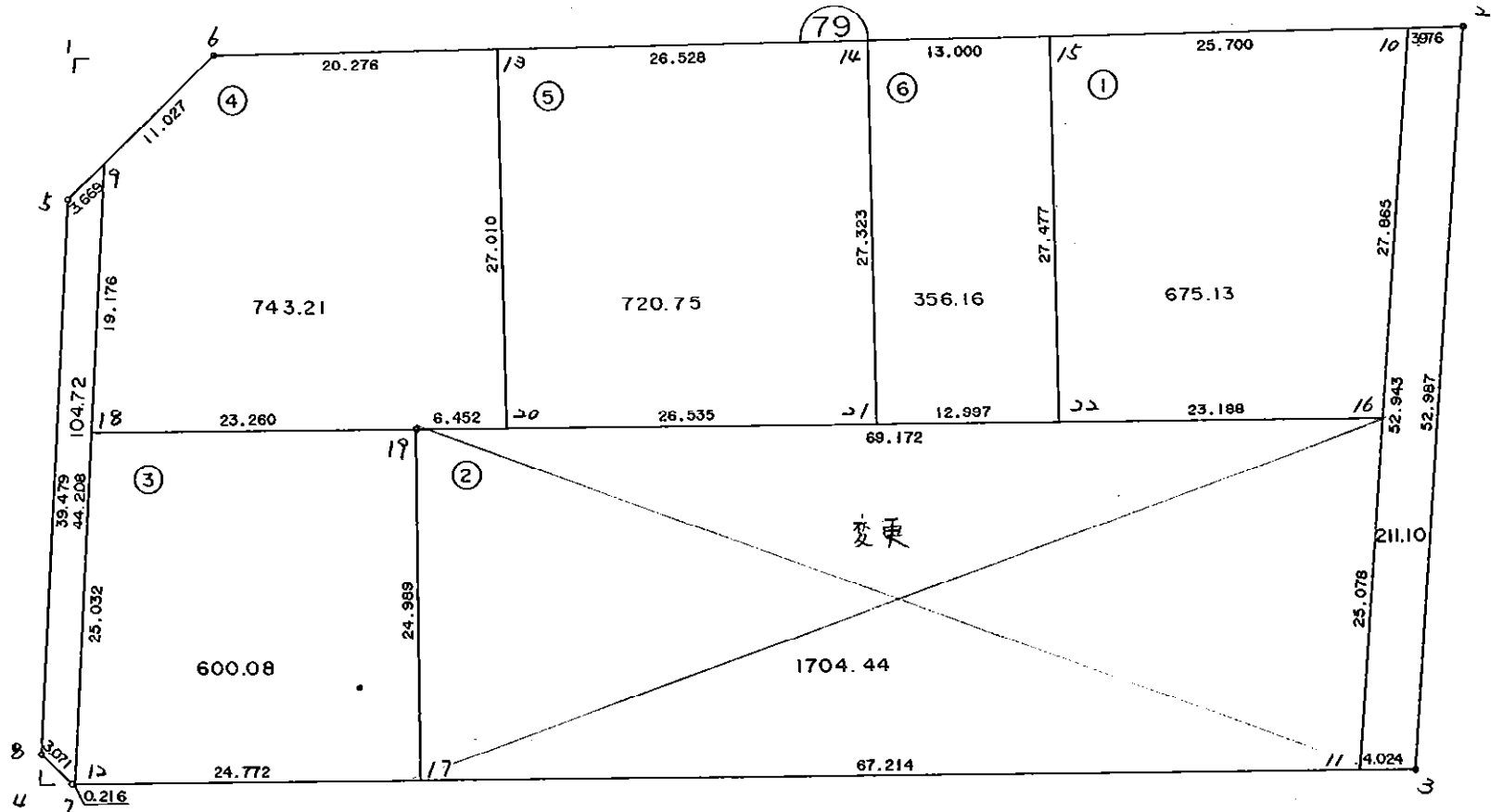


7 9 B L O C K



* * * 各筆面積 集計表 * * *

街区名・筆名	各筆面積	隅切面積
79 BLOCK	5115.62	
1 LOT	675.13	
2 LOT	1704.44	
3 LOT	600.08	
4 LOT	743.21	
5 LOT	720.75	
6 LOT	356.16	
茅カトウ	211.10	
スロ	104.72	
1 スミキリ		50.15
4 スミキリ		2.50
合計 =	5115.59	52.65

{ 2-1 LOT 512.46㎡
 2-2 LOT 731.88㎡
 2-3 LOT 460.10㎡

* * * * * 各 筆 面 積 計 算 書 * * * * *

79 BLOCK

点 名	X	Y	(X-X0)*(YN-1-Y0)	(XN-1-X0)*(Y-Y0)
X0-Y0	- 151000.000	- 39400.000		
79-5	- 151082.714	- 39576.749		
79-6	- 151071.591	- 39567.145	+ 12653.637659	+ 13825.231530
79-2	- 151062.114	- 39478.168	+ 10382.044530	+ 5596.125288
79-3	- 151115.094	- 39477.311	+ 8996.667792	+ 4802.095454
79-7	- 151124.141	- 39573.111	+ 9597.464851	+ 19924.037434
79-8	- 151122.172	- 39575.468	+ 21149.317092	+ 21782.772988
79-5	- 151082.714	- 39576.749	+ 14513.660152	+ 21593.778828
			+ 77292.792076	+ 87524.041522
		倍面積	= 10231.249446	
		面積	= 5115.624723	

1 LOT

点 名	X	Y	(X-X0)*(YN-1-Y0)	(XN-1-X0)*(Y-Y0)
X0-Y0	- 151000.000	- 39400.000		
79-15	- 151065.257	- 39507.677		
79-10	- 151062.535	- 39482.122	+ 6733.581195	+ 5359.035354
79-16	- 151090.397	- 39481.698	+ 7423.582434	+ 5108.984430
79-22	- 151092.581	- 39504.783	+ 7563.682538	+ 9472.068851
79-15	- 151065.257	- 39507.677	+ 6837.824231	+ 9968.844337
			+ 28558.670398	+ 29908.932972
		倍面積	= 1350.262574	
		面積	= 675.131287	

~~2 LOT~~

点 名	X	Y	(X-X0)*(YN-1-Y0)	(XN-1-X0)*(Y-Y0)
X0-Y0	- 151000.000	- 39400.000		
79-16	- 151090.397	- 39481.698		
79-11	- 151115.472	- 39481.317	+ 9433.831456	+ 7350.812849
79-17	- 151121.792	- 39548.234	+ 9903.760064	+ 17116.876448
79-19	- 151096.912	- 39550.563	+ 14365.653408	+ 18337.368896
79-16	- 151090.397	- 39481.698	+ 13610.443511	+ 7917.516576
			+ 47313.688439	+ 50722.574769
		倍面積	= 3408.886330	
		面積	= 1704.443165	

3 LOT

点 名	X	Y	(X-X0)*(YN-1-Y0)	(XN-1-X0)*(Y-Y0)
X0-Y0	- 151000.000	- 39500.000		
79-17	- 151121.792	- 39548.234		
79-12	- 151124.121	- 39572.896	+ 5986.852314	+ 8878.149632

* * * * * 各 筆 面 積 計 算 書 * * * * *

点 名	X	Y	(X-X0)*(YN-1-Y0)	(XN-1-X0)*(Y-Y0)
79-18	- 151099.103	- 39573.720	+ 7224.212288	+ 9150.200120
79-19	- 151096.912	- 39550.563	+ 7144.352640	+ 5010.944989
79-17	- 151121.792	- 39548.234	+ 6158.168896	+ 4674.453408
			+ 26513.586138	+ 27713.748149
		倍面積	= 1200.162011	
		面積	= 600.081005	

4 LOT

点 名	X	Y	(X-X0)*(YN-1-Y0)	(XN-1-X0)*(Y-Y0)
X0·Y0	- 151000.000	- 39500.000		
79-18	- 151099.103	- 39573.720		
79-9	- 151079.937	- 39574.351	+ 5892.955640	+ 7368.407153
79-6	- 151071.591	- 39567.145	+ 5322.862441	+ 5367.369865
79-13	- 151069.444	- 39546.983	+ 4662.817380	+ 3363.559953
79-20	- 151096.304	- 39544.140	+ 4524.650832	+ 3065.258160
79-19	- 151096.912	- 39550.563	+ 4277.695680	+ 4869.419152
79-18	- 151099.103	- 39573.720	+ 5010.944989	+ 7144.352640
			+ 29691.926962	+ 31178.366923
		倍面積	= 1486.439961	
		面積	= 743.219980	

5 LOT

点 名	X	Y	(X-X0)*(YN-1-Y0)	(XN-1-X0)*(Y-Y0)
X0·Y0	- 151000.000	- 39500.000		
79-13	- 151069.444	- 39546.983		
79-14	- 151066.634	- 39520.604	+ 3130.665222	+ 1430.824176
79-21	- 151093.805	- 39517.723	+ 1932.758220	+ 1180.954382
79-20	- 151096.304	- 39544.140	+ 1706.795792	+ 4140.552700
79-13	- 151069.444	- 39546.983	+ 3065.258160	+ 4524.650832
			+ 9835.477394	+ 11276.982090
		倍面積	= 1441.504696	
		面積	= 720.752348	

6 LOT

点 名	X	Y	(X-X0)*(YN-1-Y0)	(XN-1-X0)*(Y-Y0)
X0·Y0	- 151000.000	- 39500.000		
79-14	- 151066.634	- 39520.604		
79-15	- 151065.257	- 39507.677	+ 1344.555228	+ 511.549218
79-22	- 151092.581	- 39504.783	+ 710.744337	+ 312.124231
79-21	- 151093.805	- 39517.723	+ 448.669315	+ 1640.813063
79-14	- 151066.634	- 39520.604	+ 1180.954382	+ 1932.758220
			+ 3684.923262	+ 4397.244732
		倍面積	= 712.321470	
		面積	= 356.160735	

* * * * * 各 筆 面 積 計 算 書 * * * * *

子カトウ

点 名	X	Y	(X-X0)*(YN-1-Y0)	(XN-1-X0)*(Y-Y0)
X0-Y0	- 151000.000	- 39400.000		
79-10	- 151062.535	- 39482.122		
79-2	- 151062.114	- 39478.168	+ 5100.925908	+ 4888.235880
79-3	- 151115.094	- 39477.311	+ 8996.667792	+ 4802.095454
79-11	- 151115.472	- 39481.317	+ 8927.255792	+ 9359.098798
79-10	- 151062.535	- 39482.122	+ 5085.158595	+ 9482.791584
			+ 28110.008087	+ 28532.221716
		倍面積	= 422.213629	
		面積	= 211.106814	

入ロ

点 名	X	Y	(X-X0)*(YN-1-Y0)	(XN-1-X0)*(Y-Y0)
X0-Y0	- 151000.000	- 39500.000		
79-12	- 151124.121	- 39572.896		
79-7	- 151124.141	- 39573.111	+ 9049.382336	+ 9074.610431
79-8	- 151122.172	- 39575.468	+ 8932.117092	+ 9368.672988
79-5	- 151082.714	- 39576.749	+ 6242.260152	+ 9376.578828
79-9	- 151079.937	- 39574.351	+ 6135.084813	+ 6149.868614
79-12	- 151124.121	- 39572.896	+ 9228.520471	+ 5827.087552
			+ 39587.364864	+ 39796.818413
		倍面積	= 209.453549	
		面積	= 104.726774	

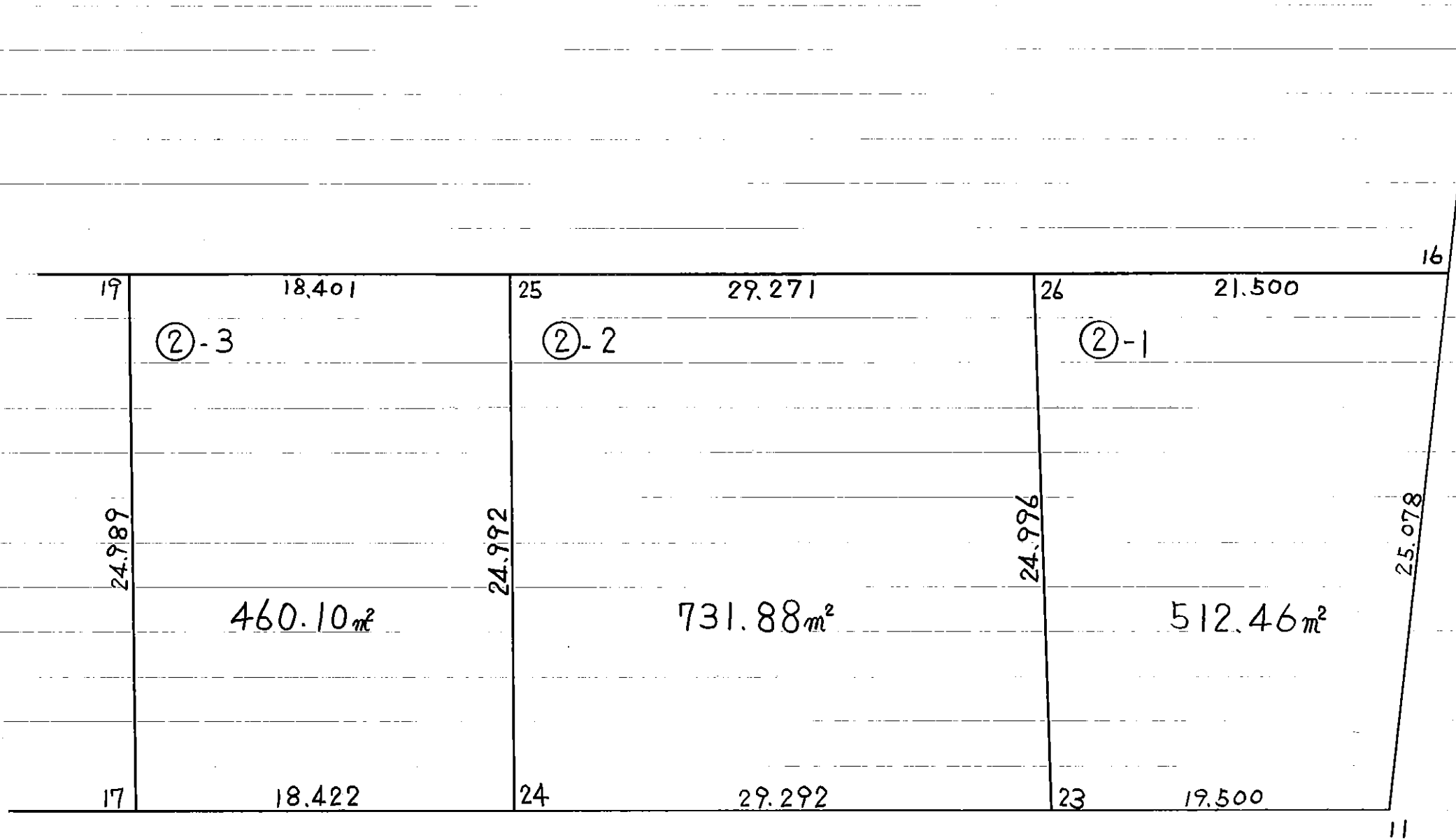
1 スミリ

点 名	X	Y	(X-X0)*(YN-1-Y0)	(XN-1-X0)*(Y-Y0)
X0-Y0	- 151000.000	- 39500.000		
79-1	- 151072.649	- 39577.076		
79-5	- 151082.714	- 39576.749	+ 6375.264264	+ 5575.738101
79-6	- 151071.591	- 39567.145	+ 5494.537659	+ 5553.831530
79-1	- 151072.649	- 39577.076	+ 4878.017105	+ 5517.947916
			+ 16747.819028	+ 16647.517547
		倍面積	= 100.301481	
		面積	= 50.150740	

4 スミリ

点 名	X	Y	(X-X0)*(YN-1-Y0)	(XN-1-X0)*(Y-Y0)
X0-Y0	- 151100.000	- 39500.000		
79-4	- 151124.357	- 39575.397		
79-7	- 151124.141	- 39573.111	+ 1820.158977	+ 1780.764627
79-8	- 151122.172	- 39575.468	+ 1621.017092	+ 1821.872988

79 Block



* * * * 2-3 LOT

面積計算書

* * * * NO 1

点名	X	DX	DMD.1	Y	DY	DMD.2	DX * DMD.2	DY * DMD.1
79-24	- 151120.060		- 39529.894					
79-17	- 151121.792	+ 1.732	+ 1.732	- 39548.234	+ 18.340	+ 18.340	+ 31.764880	+ 31.764880
79-19	- 151096.912	- 24.880	- 21.416	- 39550.563	+ 2.329	+ 39.009	- 970.543920	- 49.877864
79-25	- 151095.179	- 1.733	- 48.029	- 39532.244	- 18.319	+ 23.019	- 39.891927	+ 879.843251
79-24	- 151120.060	+ 24.881	- 24.881	- 39529.894	- 2.350	+ 2.350	+ 58.470350	+ 58.470350
		+ 26.613			+ 20.669		+ 90.235230	+ 970.078481
		- 26.613			- 20.669		- 1010.435847	- 49.877864
							- 920.200617	+ 920.200617
面積 =							460.100308	

* * * * 2-2 LOT

面積計算書

* * * * NO 1

点名	X	DX	DMD.1	Y	DY	DMD.2	DX * DMD.2	DY * DMD.1
79-23	- 151117.305			- 39500.731				
79-24	- 151120.060	+ 2.755	+ 2.755	- 39529.894	+ 29.163	+ 29.163	+ 80.344065	+ 80.344065
79-25	- 151095.179	- 24.881	- 19.371	- 39532.244	+ 2.350	+ 60.676	- 1509.679556	- 45.521850
79-26	- 151092.422	- 2.757	- 47.009	- 39503.102	- 29.142	+ 33.884	- 93.418188	+ 1369.936278
79-23	- 151117.305	+ 24.883	- 24.883	- 39500.731	- 2.371	+ 2.371	+ 58.997593	+ 58.997593
		+ 27.638			+ 31.513		+ 139.341658	+ 1509.277936
		- 27.638			- 31.513		- 1603.097744	- 45.521850
							- 1463.756086	+ 1463.756086

面積 = 731.8⁸8043

確定後変更につき端数調整

