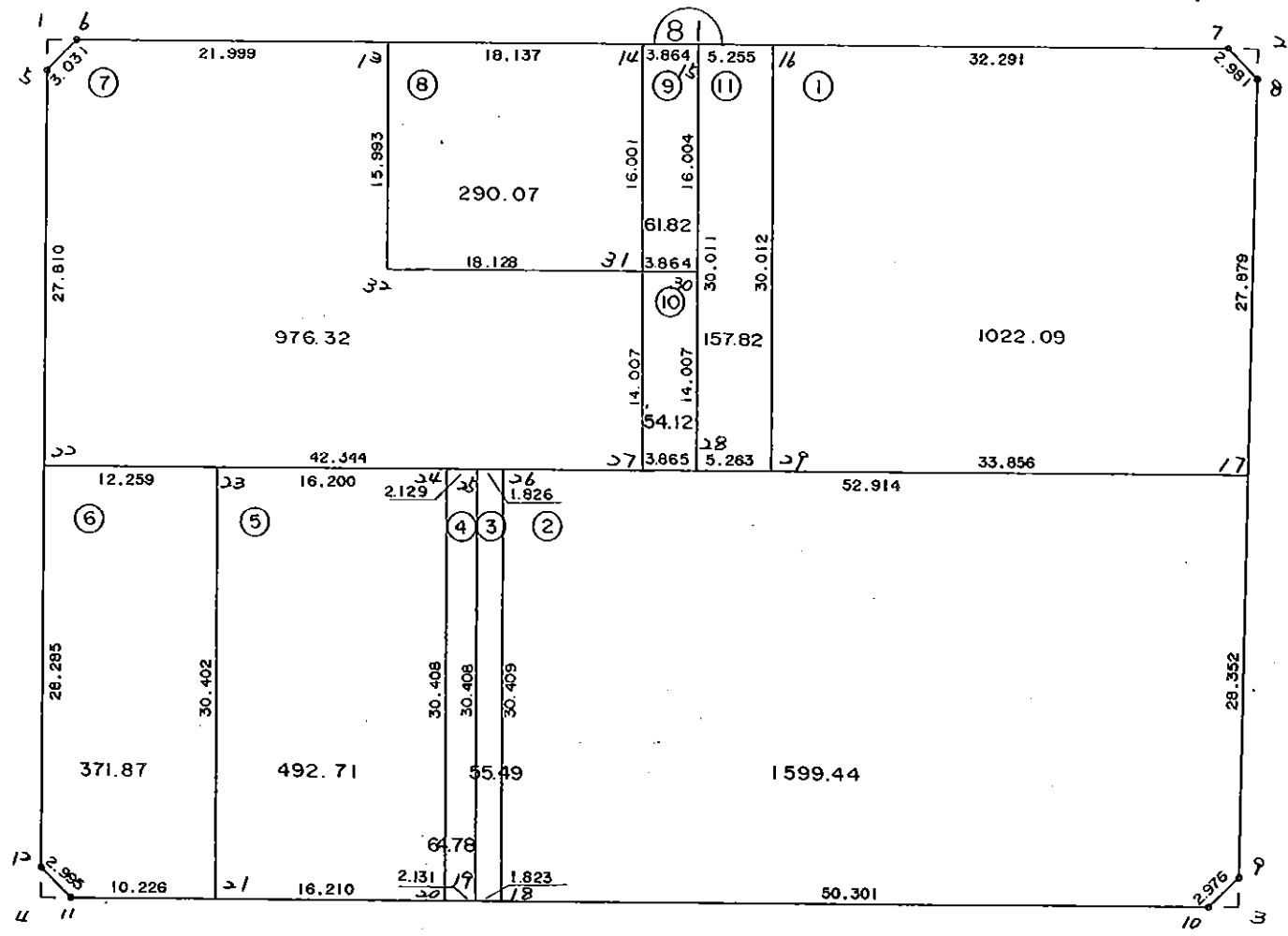


8 1 B L O C K



* * * 各筆面積 集計表 * * *

街区名・筆名	各筆面積	隅切面積
81 BLOCK	5146.60	
1 LOT	1022.09	
2 LOT	1599.44	
3 LOT	55.49	
4 LOT	64.78	
5 LOT	492.71	
6 LOT	371.87	
7 LOT	976.32	
8 LOT	290.07	
9 LOT	54.12	
10 LOT	61.82	
11 LOT	157.82	
1 スミキリ		2.28
2 スミキリ		2.26
3 スミキリ		2.17
4 スミキリ		2.24
合計 =	5146.53	8.95

* * * * * 各 筆 面 積 計 算 書 * * * * *

81 BLOCK

点 名	X	Y	(X-X0)*(YN-1-Y0)	(XN-1-X0)*(Y-Y0)
X0-Y0	- 151100.000	- 39300.000		
81-5	- 151184.599	- 39467.245		
81-6	- 151182.367	- 39465.195	+ 13775.468915	+ 13975.331805
81-7	- 151180.805	- 39383.665	+ 13348.581975	+ 6891.235055
81-8	- 151182.907	- 39381.551	+ 6936.414155	+ 6589.728555
81-9	- 151239.138	- 39381.463	+ 11346.843038	+ 6753.852941
81-10	- 151241.256	- 39383.554	+ 11507.137528	+ 11625.536452
81-11	- 151242.761	- 39464.230	+ 11928.252594	+ 23198.472880
81-12	- 151240.687	- 39466.390	+ 23105.026010	+ 23754.002790
81-5	- 151184.599	- 39467.245	+ 14076.427610	+ 23529.197315
			+106024.151825	+116317.357793
		倍面積	= 10293.205968	
		面積	= 5146.602984	

1 LOT

点 名	X	Y	(X-X0)*(YN-1-Y0)	(XN-1-X0)*(Y-Y0)
X0-Y0	- 151100.000	- 39300.000		
81-16	- 151181.423	- 39415.950		
81-7	- 151180.805	- 39383.665	+ 9369.339750	+ 6812.255295
81-8	- 151182.907	- 39381.551	+ 6936.414155	+ 6589.728555
81-17	- 151210.786	- 39381.508	+ 9034.709086	+ 6757.583756
81-29	- 151211.429	- 39415.358	+ 9082.354932	+ 12780.051388
81-16	- 151181.423	- 39415.950	+ 9392.794434	+ 12920.192550
			+ 43815.612357	+ 45859.811544
		倍面積	= 2044.199187	
		面積	= 1022.099593	

2 LOT

点 名	X	Y	(X-X0)*(YN-1-Y0)	(XN-1-X0)*(Y-Y0)
X0-Y0	- 151200.000	- 39300.000		
81-17	- 151210.786	- 39381.508		
81-9	- 151239.138	- 39381.463	+ 3190.060104	+ 878.659918
81-10	- 151241.256	- 39383.554	+ 3360.837528	+ 3270.136452
81-18	- 151242.194	- 39433.845	+ 3525.477476	+ 5521.909320
81-26	- 151211.790	- 39434.412	+ 1578.032550	+ 5671.379928
81-17	- 151210.786	- 39381.508	+ 1449.767832	+ 960.979320
			+ 13104.175490	+ 16303.064938
		倍面積	= 3198.889448	
		面積	= 1599.444724	

* * * * * 各 筆 面 積 計 算 書 * * * * *

3 LOT

点 名	X	Y	(X-X0)*(YN-1-Y0)	(XN-1-X0)*(Y-Y0)
X0-Y0	- 151200.000	- 39400.000		
81-18	- 151242.194	- 39433.845		
81-19	- 151242.228	- 39435.668	+ 1429.206660	+ 1504.975592
81-25	- 151211.825	- 39436.238	+ 421.774100	+ 1530.258264
81-26	- 151211.790	- 39434.412	+ 427.246020	+ 406.921900
81-18	- 151242.194	- 39433.845	+ 1451.979928	+ 399.032550
			+ 3730.206708	+ 3841.188306
		倍面積	= 110.981598	
		面積	= 55.490799	

4 LOT

点 名	X	Y	(X-X0)*(YN-1-Y0)	(XN-1-X0)*(Y-Y0)
X0-Y0	- 151200.000	- 39400.000		
81-19	- 151242.228	- 39435.668		
81-20	- 151242.268	- 39437.799	+ 1507.615024	+ 1596.176172
81-24	- 151211.865	- 39438.367	+ 448.485135	+ 1621.696356
81-25	- 151211.825	- 39436.238	+ 453.689775	+ 429.963870
81-19	- 151242.228	- 39435.668	+ 1530.258264	+ 421.774100
			+ 3940.048198	+ 4069.610498
		倍面積	= 129.562300	
		面積	= 64.781150	

5 LOT

点 名	X	Y	(X-X0)*(YN-1-Y0)	(XN-1-X0)*(Y-Y0)
X0-Y0	- 151200.000	- 39400.000		
81-20	- 151242.268	- 39437.799		
81-21	- 151242.570	- 39454.006	+ 1609.103430	+ 2282.725608
81-23	- 151212.173	- 39454.564	+ 657.415038	+ 2322.789480
81-24	- 151211.865	- 39438.367	+ 647.401860	+ 467.041491
81-20	- 151242.268	- 39437.799	+ 1621.696356	+ 448.485135
			+ 4535.616684	+ 5521.041714
		倍面積	= 985.425030	
		面積	= 492.712515	

6 LOT

点 名	X	Y	(X-X0)*(YN-1-Y0)	(XN-1-X0)*(Y-Y0)
X0-Y0	- 151200.000	- 39400.000		
81-21	- 151242.570	- 39454.006		
81-11	- 151242.761	- 39464.230	+ 2309.350566	+ 2734.271100
81-12	- 151240.687	- 39466.390	+ 2613.326010	+ 2838.902790

* * * * * 各 筆 面 積 計 算 書 * * * * *

点 名	X	Y	(X-X0)*(YN-1-Y0)	(XN-1-X0)*(Y-Y0)
81-22	- 151212.406	- 39466.821	+ 823.634340	+ 2718.746027
81-23	- 151212.173	- 39454.564	+ 813.412033	+ 676.920984
81-21	- 151242.570	- 39454.006	+ 2322.789480	+ 657.415038
			+ 8882.512429	+ 9626.255939
		倍面積	= 743.743510	
		面積	= 371.871755	

7 LOT

点 名	X	Y	(X-X0)*(YN-1-Y0)	(XN-1-X0)*(Y-Y0)
X0-Y0	- 151100.000	- 39400.000		
81-22	- 151212.406	- 39466.821		
81-5	- 151184.599	- 39467.245	+ 5652.989779	+ 7558.741470
81-6	- 151182.367	- 39465.195	+ 5538.768915	+ 5515.431805
81-13	- 151181.946	- 39443.200	+ 5342.469470	+ 3558.254400
81-32	- 151197.936	- 39442.881	+ 4230.835200	+ 3513.926426
81-31	- 151197.597	- 39424.756	+ 4185.056957	+ 2424.503616
81-27	- 151211.601	- 39424.484	+ 2762.794356	+ 2389.564948
81-22	- 151212.406	- 39466.821	+ 2752.148504	+ 7457.290421
			+ 30465.063181	+ 32417.713086
		倍面積	= 1952.649905	
		面積	= 976.324952	

8 LOT

点 名	X	Y	(X-X0)*(YN-1-Y0)	(XN-1-X0)*(Y-Y0)
X0-Y0	- 151100.000	- 39400.000		
81-13	- 151181.946	- 39443.200		
81-14	- 151181.599	- 39425.066	+ 3525.076800	+ 2054.058436
81-31	- 151197.597	- 39424.756	+ 2446.366402	+ 2020.064844
81-32	- 151197.936	- 39442.881	+ 2424.503616	+ 4185.056957
81-13	- 151181.946	- 39443.200	+ 3513.926426	+ 4230.835200
			+ 11909.873244	+ 12490.015437
		倍面積	= 580.142193	
		面積	= 290.071096	

9 LOT

点 名	X	Y	(X-X0)*(YN-1-Y0)	(XN-1-X0)*(Y-Y0)
X0-Y0	- 151100.000	- 39400.000		
81-31	- 151197.597	- 39424.756		
81-30	- 151197.525	- 39420.893	+ 2414.328900	+ 2039.094121
81-28	- 151211.529	- 39420.620	+ 2330.175397	+ 2010.965500
81-27	- 151211.601	- 39424.484	+ 2301.212620	+ 2730.676036
81-31	- 151197.597	- 39424.756	+ 2389.564948	+ 2762.794356

* * * * * 各 筆 面 積 計 算 書 * * * * *

点 名	X	Y	(X-X0)*(YN-1-Y0)	(XN-1-X0)*(Y-Y0)
			+ 9435.281865	+ 9543.530013
		倍面積	= 108.248148	
		面積	= 54.124074	

10 LOT

点 名	X	Y	(X-X0)*(YN-1-Y0)	(XN-1-X0)*(Y-Y0)
X0-Y0	- 151100.000	- 39400.000		
81-14	- 151181.599	- 39425.066		
81-15	- 151181.524	- 39421.204	+ 2043.480584	+ 1730.225196
81-30	- 151197.525	- 39420.893	+ 2067.920100	+ 1703.280932
81-31	- 151197.597	- 39424.756	+ 2039.094121	+ 2414.328900
81-14	- 151181.599	- 39425.066	+ 2020.064844	+ 2446.366402
			+ 8170.559649	+ 8294.201430
		倍面積	= 123.641781	
		面積	= 61.820890	

11 LOT

点 名	X	Y	(X-X0)*(YN-1-Y0)	(XN-1-X0)*(Y-Y0)
X0-Y0	- 151100.000	- 39400.000		
81-15	- 151181.524	- 39421.204		
81-16	- 151181.423	- 39415.950	+ 1726.493292	+ 1300.307800
81-29	- 151211.429	- 39415.358	+ 1777.292550	+ 1250.494434
81-28	- 151211.529	- 39420.620	+ 1712.862382	+ 2297.665980
81-15	- 151181.524	- 39421.204	+ 1681.024880	+ 2364.860916
			+ 6897.673104	+ 7213.329130
		倍面積	= 315.656026	
		面積	= 157.828013	

1 区切り

点 名	X	Y	(X-X0)*(YN-1-Y0)	(XN-1-X0)*(Y-Y0)
X0-Y0	- 151100.000	- 39400.000		
81-1	- 151182.407	- 39467.278		
81-5	- 151184.599	- 39467.245	+ 5691.651522	+ 5541.458715
81-6	- 151182.367	- 39465.195	+ 5538.768915	+ 5515.431805
81-1	- 151182.407	- 39467.278	+ 5372.524365	+ 5541.487026
			+ 16602.944802	+ 16598.377546
		倍面積	= 4.567256	
		面積	= 2.283628	

2 区切り

点 名	X	Y	(X-X0)*(YN-1-Y0)	(XN-1-X0)*(Y-Y0)
X0-Y0	- 151100.000	- 39300.000		
81-2	- 151180.765	- 39381.554		
81-7	- 151180.805	- 39383.665	+ 6589.970970	+ 6757.203725

* * * * * 各 筆 面 積 計 算 書 * * * * *

点 名	X	Y	(X-X0)*(YN-1-Y0)	(XN-1-X0)*(Y-Y0)
81-8	- 151182.907	- 39381.551	+ 6936.414155	+ 6589.728555
81-2	- 151180.765	- 39381.554	+ 6586.466515	+ 6761.397478
			+ 20112.851640	+ 20108.329758
		倍面積	= 4.521882	
		面積	= 2.260941	

3 区切

点 名	X	Y	(X-X0)*(YN-1-Y0)	(XN-1-X0)*(Y-Y0)
X0-Y0	- 151200.000	- 39300.000		
81-3	- 151241.217	- 39381.460		
81-9	- 151239.138	- 39381.463	+ 3188.181480	+ 3357.660471
81-10	- 151241.256	- 39383.554	+ 3360.837528	+ 3270.136452
81-3	- 151241.217	- 39381.460	+ 3443.845218	+ 3360.713760
			+ 9992.864226	+ 9988.510683
		倍面積	= 4.353543	
		面積	= 2.176771	

4 区切

点 名	X	Y	(X-X0)*(YN-1-Y0)	(XN-1-X0)*(Y-Y0)
X0-Y0	- 151200.000	- 39400.000		
81-4	- 151242.801	- 39466.358		
81-11	- 151242.761	- 39464.230	+ 2837.534438	+ 2749.108230
81-12	- 151240.687	- 39466.390	+ 2613.326010	+ 2838.902790
81-4	- 151242.801	- 39466.358	+ 2841.558390	+ 2699.907946
			+ 8292.418838	+ 8287.918966
		倍面積	= 4.499872	
		面積	= 2.249936	