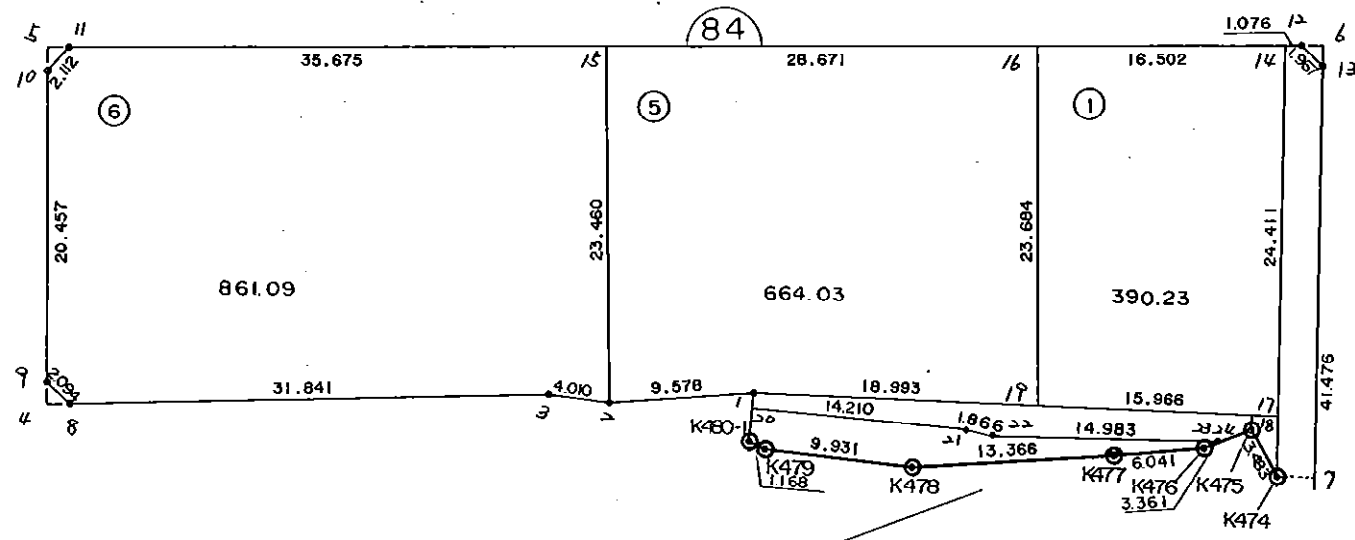
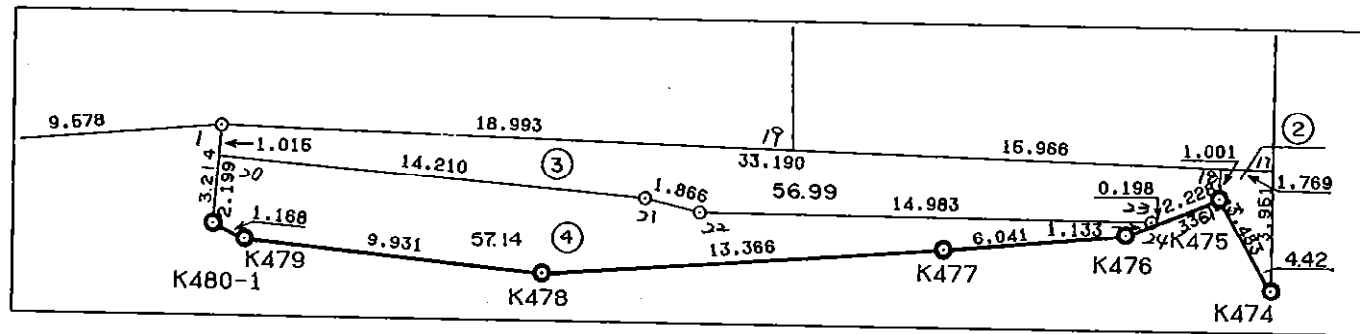


8 4 B L O C K

84  
B  
L  
O  
C  
K



略图



\* \* \* 各筆面積 集計表 \* \* \*

街区名・筆名	各筆面積	隅切面積
84 BLOCK	2103.94	
1 LOT	390.23	
2 LOT	4.42	
3 LOT	56.99	
4 LOT	57.14	
5 LOT	664.03	
6 LOT	861.09	
スロ	70.02	
4 スミリ		1.12
5 スミリ		1.09
6 スミリ		0.99
合計 =	2103.92	3.20

\* \* \* \* \* 各 筆 面 積 計 算 書 \* \* \* \* \*

84 BLOCK

点 名	X	Y	(X-X0)*(Yn-1-Y0)	(Xn-1-X0)*(Y-Y0)
X0·Y0	- 151200.000	- 39300.000		
84-1	- 151273.789	- 39419.046		
84-2	- 151274.605	- 39428.589	+ 8881.426830	+ 9488.453721
84-3	- 151274.135	- 39432.571	+ 9532.945515	+ 9890.459455
84-8	- 151275.302	- 39464.391	+ 9982.861442	+ 12187.126785
84-9	- 151273.890	- 39465.937	+ 12146.850990	+ 12495.387974
84-10	- 151253.435	- 39466.177	+ 8866.843595	+ 12278.818530
84-11	- 151251.827	- 39464.808	+ 8612.455379	+ 8806.515480
84-12	- 151250.275	- 39382.899	+ 8285.722200	+ 4296.406473
84-13	- 151251.642	- 39381.485	+ 4281.070158	+ 4096.658375
84-7	- 151278.660	- 39381.612	+ 6409.610100	+ 4214.606904
K474	- 151278.657	- 39384.119	+ 6419.355084	+ 6616.800540
K475	- 151275.661	- 39385.895	+ 6364.527659	+ 6756.243015
K476	- 151276.895	- 39389.021	+ 6604.896025	+ 6735.417881
K477	- 151277.470	- 39395.035	+ 6896.456870	+ 7307.716325
K478	- 151278.471	- 39408.363	+ 7457.491485	+ 8394.881610
K479	- 151277.485	- 39418.245	+ 8396.507055	+ 9278.803395
K480-1	- 151276.993	- 39419.304	+ 9104.037285	+ 9244.270440
84-1	- 151273.789	- 39419.046	+ 8803.322856	+ 9165.708678

+137046.380528      +141254.275581

倍面積 = 4207.895053  
面積 = 2103.947526

1 LOT

点 名	X	Y	(X-X0)*(Yn-1-Y0)	(Xn-1-X0)*(Y-Y0)
X0·Y0	- 151200.000	- 39300.000		
84-16	- 151250.608	- 39400.474		
84-14	- 151250.295	- 39383.975	+ 5053.339830	+ 4249.806800
84-17	- 151274.706	- 39384.099	+ 6273.436350	+ 4229.759205
84-19	- 151274.288	- 39400.059	+ 6247.546512	+ 7475.007654
84-16	- 151250.608	- 39400.474	+ 5063.785872	+ 7464.012512

+ 22638.108564      + 23418.586171

倍面積 = 780.477607  
面積 = 390.238803

2 LOT

点 名	X	Y	(X-X0)*(Yn-1-Y0)	(Xn-1-X0)*(Y-Y0)
X0·Y0	- 151200.000	- 39300.000		
84-17	- 151274.706	- 39384.099		
K474	- 151278.657	- 39384.119	+ 6614.975043	+ 6284.194014
K475	- 151275.661	- 39385.895	+ 6364.527659	+ 6756.243015
84-18	- 151274.660	- 39385.867	+ 6412.920700	+ 6496.783087

\* \* \* \* \* 各 筆 面 積 計 算 書 \* \* \* \* \*

点 名	X	Y	(X-X0)*(YN-1-Y0)	(XN-1-X0)*(Y-Y0)
84-17	- 151274.706	- 39384.099	+ 6414.780102	+ 6278.831340
			+ 25807.203504	+ 25816.051456
		倍面積	= 8.847952	
		面積	= 4.423976	

3 LOT

点 名	X	Y	(X-X0)*(YN-1-Y0)	(XN-1-X0)*(Y-Y0)
X0·Y0	- 151200.000	- 39300.000		
84-20	- 151274.801	- 39419.127		
84-1	- 151273.789	- 39419.046	+ 8790.262203	+ 8904.759846
84-18	- 151274.660	- 39385.867	+ 8887.974360	+ 6336.040063
K475	- 151275.661	- 39385.895	+ 6496.783087	+ 6412.920700
84-24	- 151276.479	- 39387.967	+ 6569.163705	+ 6655.671187
84-23	- 151276.448	- 39388.163	+ 6724.901216	+ 6742.618077
84-22	- 151276.381	- 39403.146	+ 6733.978103	+ 7885.305408
84-21	- 151275.959	- 39404.964	+ 7834.867014	+ 8017.255284
84-20	- 151274.801	- 39419.127	+ 7851.412164	+ 9048.767793
			+ 59889.341852	+ 60003.338358
		倍面積	= 113.996506	
		面積	= 56.998253	

4 LOT

点 名	X	Y	(X-X0)*(YN-1-Y0)	(XN-1-X0)*(Y-Y0)
X0·Y0	- 151200.000	- 39300.000		
84-20	- 151274.801	- 39419.127		
84-21	- 151275.959	- 39404.964	+ 9048.767793	+ 7851.412164
84-22	- 151276.381	- 39403.146	+ 8017.255284	+ 7834.867014
84-23	- 151276.448	- 39388.163	+ 7885.305408	+ 6733.978103
84-24	- 151276.479	- 39387.967	+ 6742.618077	+ 6724.901216
K476	- 151276.895	- 39389.021	+ 6764.222465	+ 6808.237059
K477	- 151277.470	- 39395.035	+ 6896.456870	+ 7307.716325
K478	- 151278.471	- 39408.363	+ 7457.491485	+ 8394.881610
K479	- 151277.485	- 39418.245	+ 8396.507055	+ 9278.803395
K480-1	- 151276.993	- 39419.304	+ 9104.037285	+ 9244.270440
84-20	- 151274.801	- 39419.127	+ 8924.058504	+ 9171.945111
			+ 79236.720226	+ 79351.012437
		倍面積	= 114.292211	
		面積	= 57.146105	

5 LOT

点 名	X	Y	(X-X0)*(YN-1-Y0)	(XN-1-X0)*(Y-Y0)
X0·Y0	- 151200.000	- 39400.000		
84-15	- 151251.151	- 39429.139		
84-16	- 151250.608	- 39400.474	+ 1474.666512	+ 24.245574

\* \* \* \* \* 各 筆 面 積 計 算 書 \* \* \* \* \*

点 名	X	Y	(X-X0)*(YN-1-Y0)	(XN-1-X0)*(Y-Y0)
84-19	- 151274.288	- 39400.059	+ 35.212512	+ 2.985872
84-1	- 151273.789	- 39419.046	+ 4.353551	+ 1414.889248
84-2	- 151274.605	- 39428.589	+ 1420.926830	+ 2109.553721
84-15	- 151251.151	- 39429.139	+ 1462.355939	+ 2173.915095
			+ 4397.515344	+ 5725.589510
		倍面積	= 1328.074166	
		面積	= 664.037083	

6 LOT

点 名	X	Y	(X-X0)*(YN-1-Y0)	(XN-1-X0)*(Y-Y0)
X0-Y0	- 151200.000	- 39400.000		
84-2	- 151274.605	- 39428.589		
84-3	- 151274.135	- 39432.571	+ 2119.445515	+ 2429.959455
84-8	- 151275.302	- 39464.391	+ 2452.661442	+ 4773.626785
84-9	- 151273.890	- 39465.937	+ 4757.850990	+ 4965.187974
84-10	- 151253.435	- 39466.177	+ 3523.343595	+ 4889.818530
84-11	- 151251.827	- 39464.808	+ 3429.755379	+ 3463.015480
84-15	- 151251.151	- 39429.139	+ 3314.994008	+ 1510.186953
84-2	- 151274.605	- 39428.589	+ 2173.915095	+ 1462.355939
			+ 21771.966024	+ 23494.151116
		倍面積	= 1722.185092	
		面積	= 861.092546	

210

点 名	X	Y	(X-X0)*(YN-1-Y0)	(XN-1-X0)*(Y-Y0)
X0-Y0	- 151200.000	- 39300.000		
84-14	- 151250.295	- 39383.975		
84-12	- 151250.275	- 39382.899	+ 4221.843125	+ 4169.405205
84-13	- 151251.642	- 39381.485	+ 4281.070158	+ 4096.658375
84-7	- 151278.660	- 39381.612	+ 6409.610100	+ 4214.606904
K474	- 151278.657	- 39384.119	+ 6419.355084	+ 6616.800540
84-14	- 151250.295	- 39383.975	+ 4230.765105	+ 6605.221575
			+ 25562.643572	+ 25702.692599
		倍面積	= 140.049027	
		面積	= 70.024513	

4 2337

点 名	X	Y	(X-X0)*(YN-1-Y0)	(XN-1-X0)*(Y-Y0)
X0-Y0	- 151200.000	- 39400.000		
84-4	- 151275.358	- 39465.920		
84-8	- 151275.302	- 39464.391	+ 4963.907840	+ 4852.376978
84-9	- 151273.890	- 39465.937	+ 4757.850990	+ 4965.187974

\* \* \* \* \* 各 筆 面 積 計 算 書 \* \* \* \* \*

点 名	X	Y	(X-X0)*(YN-1-Y0)	(XN-1-X0)*(Y-Y0)
84-4	- 151275.358	- 39465.920	+ 4968.880446	+ 4870.828800
			+ 14690.639276	+ 14688.393752
		倍面積	= 2.245524	
		面積	= 1.122762	

5 区判

点 名	X	Y	(X-X0)*(YN-1-Y0)	(XN-1-X0)*(Y-Y0)
X0-Y0	- 151200.000	- 39400.000		
84-5	- 151251.853	- 39466.196		
84-10	- 151253.435	- 39466.177	+ 3537.183260	+ 3431.475981
84-11	- 151251.827	- 39464.808	+ 3429.755379	+ 3463.015480
84-5	- 151251.853	- 39466.196	+ 3360.489224	+ 3430.740092
			+ 10327.427863	+ 10325.231553
		倍面積	= 2.196310	
		面積	= 1.098155	

6 区判

点 名	X	Y	(X-X0)*(YN-1-Y0)	(XN-1-X0)*(Y-Y0)
X0-Y0	- 151200.000	- 39300.000		
84-6	- 151250.248	- 39381.478		
84-12	- 151250.275	- 39382.899	+ 4096.306450	+ 4165.508952
84-13	- 151251.642	- 39381.485	+ 4281.070158	+ 4096.658375
84-6	- 151250.248	- 39381.478	+ 4094.458280	+ 4207.686876
			+ 12471.834888	+ 12469.854203
		倍面積	= 1.980685	
		面積	= 0.990342	