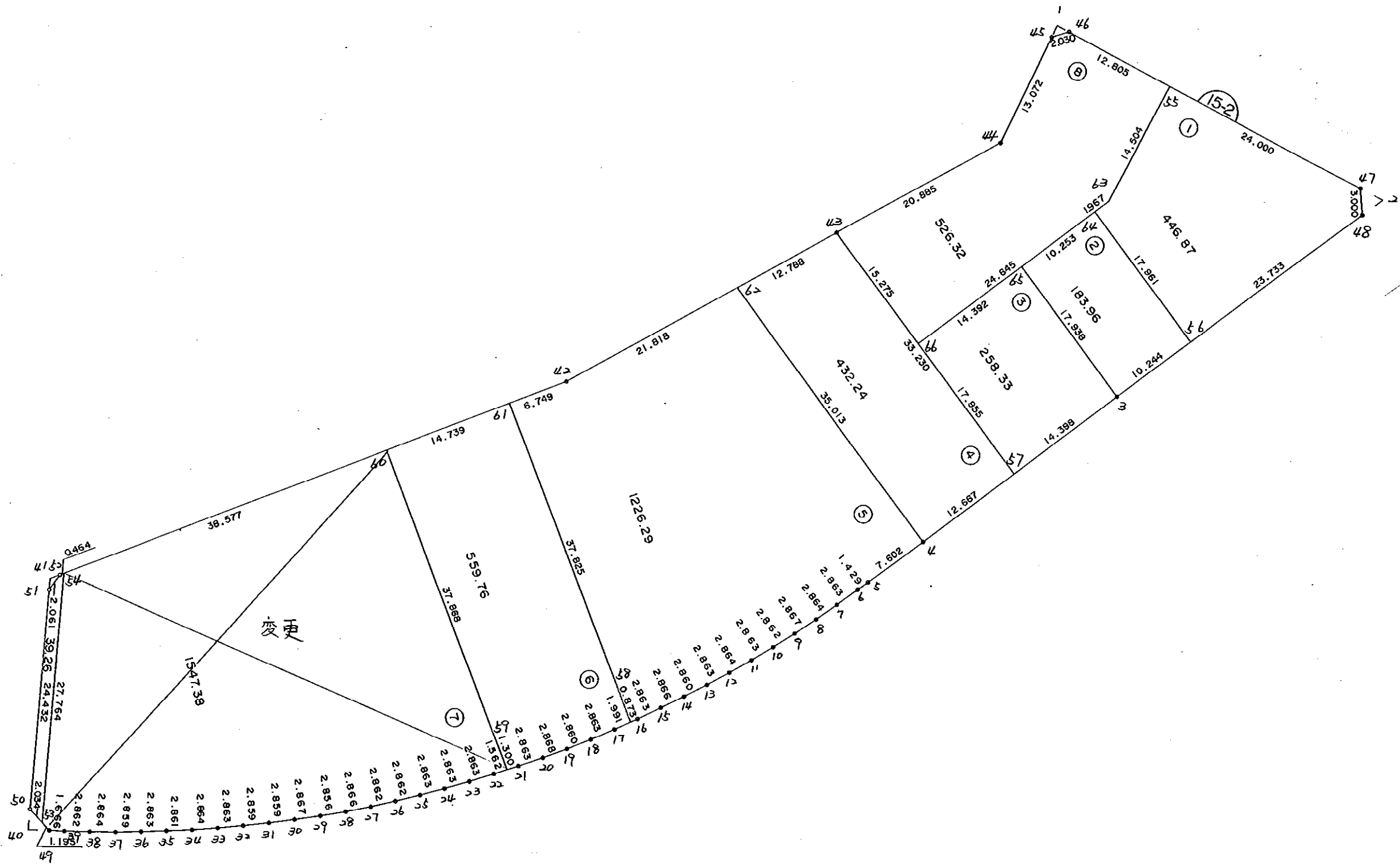


1 5 - 2 B L O C K

]



* * * 各筆面積 集計表 * * *

街区名・筆名	各筆面積	隅切面積
15-2 BLOCK	5220.41	
1 LOT	446.87	
2 LOT	183.96	
3 LOT	258.33	
4 LOT	432.24	
5 LOT	1226.29	
6 LOT	559.76	
7 LOT	1547.38	{ 7-1 LOT 1494.77 ^m ²
8 LOT	526.32	{ 7-2 LOT 52.61 ^m ²
スド	39.26	
1 スミキリ		1.06
2 スミキリ		3.55
40 スミキリ		2.75
41 スミキリ		0.66
合計 =	5220.41	8.02

* * * * * 各 筆 面 積 計 算 書 * * * * *

15-2 BLOCK

点 名	X	Y	(X-X0)*(Y1-Y0)	(XN-1-X0)*(Y-Y0)
X0·Y0	- 150700.000	- 38500.000		
15-2-45	- 150800.395	- 38618.551		
15-2-46	- 150798.826	- 38617.263	+ 11715.921126	+ 11772.618885
15-2-47	- 150795.539	- 38580.605	+ 11203.189757	+ 7965.869730
15-2-48	- 150797.929	- 38578.792	+ 7893.567045	+ 7527.708888
15-2-3	- 150829.800	- 38590.569	+ 10227.201600	+ 8869.331601
15-2-4	- 150855.220	- 38599.860	+ 14058.120180	+ 12961.828000
15-2-5	- 150862.343	- 38602.516	+ 16211.571980	+ 15912.533520
15-2-6	- 150863.678	- 38603.027	+ 16779.613848	+ 16725.712261
15-2-7	- 150866.342	- 38604.076	+ 17137.717234	+ 17034.951528
15-2-8	- 150868.988	- 38605.173	+ 17587.595088	+ 17494.687166
15-2-9	- 150871.617	- 38606.317	+ 18049.474741	+ 17966.297196
15-2-10	- 150874.213	- 38607.523	+ 18521.803521	+ 18452.774691
15-2-11	- 150876.789	- 38608.773	+ 19008.883647	+ 18949.670649
15-2-12	- 150879.337	- 38610.081	+ 19507.023501	+ 19461.109909
15-2-13	- 150881.852	- 38611.450	+ 20018.450012	+ 19987.108650
15-2-14	- 150884.341	- 38612.858	+ 20544.804450	+ 20523.453016
15-2-15	- 150886.808	- 38614.316	+ 21082.777264	+ 21073.125756
15-2-16	- 150889.255	- 38615.803	+ 21634.874580	+ 21632.926824
15-2-17	- 150891.657	- 38617.362	+ 22194.455571	+ 22211.345310
15-2-18	- 150894.033	- 38618.960	+ 22772.100946	+ 22799.516720
15-2-19	- 150896.378	- 38620.598	+ 23361.126880	+ 23399.991734
15-2-20	- 150898.687	- 38622.300	+ 23961.254826	+ 24017.029400
15-2-21	- 150900.953	- 38624.050	+ 24576.551900	+ 24647.122350
15-2-22	- 150903.188	- 38625.838	+ 25205.471400	+ 25287.523614
15-2-23	- 150905.394	- 38627.663	+ 25846.370172	+ 25939.589644
15-2-24	- 150907.559	- 38629.536	+ 26497.604617	+ 26605.917184
15-2-25	- 150909.683	- 38631.455	+ 27161.497088	+ 27284.668345
15-2-26	- 150911.768	- 38633.415	+ 27837.962440	+ 27974.857445
15-2-27	- 150913.819	- 38635.411	+ 28526.661885	+ 28675.716648
15-2-28	- 150915.833	- 38637.450	+ 29226.162363	+ 29389.421550
15-2-29	- 150917.779	- 38639.540	+ 29933.723550	+ 30117.336820
15-2-30	- 150919.693	- 38641.674	+ 30655.961220	+ 30853.622046
15-2-31	- 150921.565	- 38643.835	+ 31389.999810	+ 31599.542655
15-2-32	- 150923.396	- 38646.031	+ 32132.163660	+ 32355.358515
15-2-33	- 150925.186	- 38648.265	+ 32884.136766	+ 33121.807940
15-2-34	- 150926.930	- 38650.537	+ 33645.776450	+ 33898.824882
15-2-35	- 150928.609	- 38652.853	+ 34414.113033	+ 34686.931290
15-2-36	- 150930.259	- 38655.193	+ 35195.778927	+ 35478.516537
15-2-37	- 150931.874	- 38657.552	+ 35985.221682	+ 36277.765968
15-2-38	- 150933.433	- 38659.954	+ 36777.836016	+ 37089.173796
15-2-39	- 150934.949	- 38662.382	+ 37581.032346	+ 37905.317406
15-2-49	- 150935.818	- 38663.803	+ 38292.598476	+ 38485.351047
15-2-50	- 150935.046	- 38666.938	+ 38501.239938	+ 39366.985284
15-2-51	- 150913.511	- 38678.478	+ 35643.099318	+ 41950.539988
15-2-52	- 150911.452	- 38678.378	+ 37739.530056	+ 38085.665158

* * * * * 各 筆 面 積 計 算 書 * * * * *

点 名	X	Y	(X-X0)*(Yn-1-Y0)	(Xn-1-X0)*(Y-Y0)
15-2-42	- 150862.350	- 38642.983	+ 28959.668300	+ 30234.041316
15-2-43	- 150831.820	- 38626.688	+ 18848.019060	+ 20567.796800
15-2-44	- 150813.364	- 38616.913	+ 14361.858432	+ 15411.471660
15-2-45	- 150800.395	- 38618.551	+ 11737.480635	+ 13439.415564
			+ 183029.047337	+ 193469.872886
		倍面積	= 10440.825549	
		面積	= 5220.412774	

1 LOT

点 名	X	Y	(X-X0)*(Yn-1-Y0)	(Xn-1-X0)*(Y-Y0)
X0·Y0	- 150700.000	- 38500.000		
15-2-55	- 150797.682	- 38604.509		
15-2-47	- 150795.539	- 38580.605	+ 9984.685351	+ 7873.657610
15-2-48	- 150797.929	- 38578.792	+ 7893.567045	+ 7527.708888
15-2-56	- 150820.191	- 38587.018	+ 9470.089272	+ 8521.585722
15-2-64	- 150813.971	- 38603.868	+ 9917.528478	+ 12483.998788
15-2-63	- 150812.126	- 38603.186	+ 11646.303368	+ 11760.211606
15-2-55	- 150797.682	- 38604.509	+ 10079.414852	+ 11718.176134
			+ 58991.588366	+ 59885.338748
		倍面積	= 893.750382	
		面積	= 446.875191	

2 LOT

点 名	X	Y	(X-X0)*(Yn-1-Y0)	(Xn-1-X0)*(Y-Y0)
X0·Y0	- 150800.000	- 38500.000		
15-2-56	- 150820.191	- 38587.018		
15-2-3	- 150829.800	- 38590.569	+ 2593.136400	+ 1828.678679
15-2-65	- 150823.597	- 38607.400	+ 2137.156693	+ 3200.520000
15-2-64	- 150813.971	- 38603.868	+ 1500.485400	+ 2450.973196
15-2-56	- 150820.191	- 38587.018	+ 2097.198788	+ 1215.728478
			+ 8327.977281	+ 8695.900353
		倍面積	= 367.923072	
		面積	= 183.961536	

3 LOT

点 名	X	Y	(X-X0)*(Yn-1-Y0)	(Xn-1-X0)*(Y-Y0)
X0·Y0	- 150800.000	- 38500.000		
15-2-3	- 150829.800	- 38590.569		
15-2-57	- 150843.323	- 38595.512	+ 3923.720787	+ 2846.257600
15-2-66	- 150837.108	- 38612.357	+ 3544.259296	+ 4867.642311
15-2-65	- 150823.597	- 38607.400	+ 2651.288129	+ 3985.399200
15-2-3	- 150829.800	- 38590.569	+ 3200.520000	+ 2137.156693

* * * * * 各 筆 面 積 計 算 書 * * * * *

点 名	X	Y	(X-X0)*(YN-1-Y0)	(XN-1-X0)*(Y-Y0)
			+ 13319.788212	+ 13836.455804
		倍面積	= 516.667592	
		面積	= 258.333796	

4 LOT

点 名	X	Y	(X-X0)*(YN-1-Y0)	(XN-1-X0)*(Y-Y0)
X0-Y0	- 150800.000	- 38500.000		
15-2-57	- 150843.323	- 38595.512		
15-2-4	- 150855.220	- 38599.860	+ 5274.172640	+ 4326.234780
15-2-62	- 150843.102	- 38632.709	+ 4304.165720	+ 7328.190980
15-2-43	- 150831.820	- 38626.688	+ 4222.800380	+ 5460.506176
15-2-57	- 150843.323	- 38595.512	+ 5488.504224	+ 3039.191840
			+ 19289.642964	+ 20154.123776
		倍面積	= 864.480812	
		面積	= 432.240406	

5 LOT

点 名	X	Y	(X-X0)*(YN-1-Y0)	(XN-1-X0)*(Y-Y0)
X0-Y0	- 150800.000	- 38500.000		
15-2-4	- 150855.220	- 38599.860		
15-2-5	- 150862.343	- 38602.516	+ 6225.571980	+ 5660.933520
15-2-6	- 150863.678	- 38603.027	+ 6528.013848	+ 6423.012261
15-2-7	- 150866.342	- 38604.076	+ 6835.017234	+ 6627.351528
15-2-8	- 150868.988	- 38605.173	+ 7179.995088	+ 6977.387166
15-2-9	- 150871.617	- 38606.317	+ 7532.174741	+ 7334.597196
15-2-10	- 150874.213	- 38607.523	+ 7890.103521	+ 7700.474691
15-2-11	- 150876.789	- 38608.773	+ 8256.583647	+ 8072.370649
15-2-12	- 150879.337	- 38610.081	+ 8629.723501	+ 8453.009909
15-2-13	- 150881.852	- 38611.450	+ 9010.350012	+ 8842.108650
15-2-14	- 150884.341	- 38612.858	+ 9399.804450	+ 9237.653016
15-2-15	- 150886.808	- 38614.316	+ 9796.977264	+ 9641.525756
15-2-16	- 150889.255	- 38615.803	+ 10203.274580	+ 10052.626824
15-2-58	- 150889.987	- 38616.278	+ 10420.764561	+ 10378.392890
15-2-61	- 150867.825	- 38646.930	+ 7886.555350	+ 13221.789910
15-2-42	- 150862.350	- 38642.983	+ 9161.085500	+ 9697.821975
15-2-62	- 150843.102	- 38632.709	+ 6162.853266	+ 8274.406150
15-2-4	- 150855.220	- 38599.860	+ 7328.190980	+ 4304.165720
			+138447.039523	+140899.627811
		倍面積	= 2452.588288	
		面積	= 1226.294144	

6 LOT

点 名	X	Y	(X-X0)*(YN-1-Y0)	(XN-1-X0)*(Y-Y0)
X0-Y0	- 150800.000	- 38600.000		
15-2-58	- 150889.987	- 38616.278		
15-2-17	- 150891.657	- 38617.362	+ 1491.992646	+ 1562.354294

* * * * * 各 筆 面 積 計 算 書 * * * * *

点 名	X	Y	(X-X0)*(Y1-Y0)	(XN-1-X0)*(Y-Y0)
15-2-18	- 150894.033	- 38618.960	+ 1632.600946	+ 1737.816720
15-2-19	- 150896.378	- 38620.598	+ 1827.326880	+ 1936.891734
15-2-20	- 150898.687	- 38622.300	+ 2032.754826	+ 2149.229400
15-2-21	- 150900.953	- 38624.050	+ 2251.251900	+ 2373.422350
15-2-59	- 150901.968	- 38624.862	+ 2452.330400	+ 2509.893486
15-2-60	- 150879.781	- 38655.549	+ 1983.515222	+ 5664.220432
15-2-61	- 150867.825	- 38646.930	+ 3767.610925	+ 3744.122330
15-2-58	- 150889.987	- 38616.278	+ 4223.089910	+ 1104.055350
			+ 21662.473655	+ 22782.006096
		倍面積	= 1119.532441	
		面積	= 559.766220	

7 LOT

点 名	X	Y	(X-X0)*(Y1-Y0)	(XN-1-X0)*(Y-Y0)
X0-Y0	- 150800.000	- 38600.000		
15-2-59	- 150901.968	- 38624.862		
15-2-22	- 150903.188	- 38625.838	+ 2565.460056	+ 2634.649184
15-2-23	- 150905.394	- 38627.663	+ 2723.170172	+ 2854.489644
15-2-24	- 150907.559	- 38629.536	+ 2975.404617	+ 3112.917184
15-2-25	- 150909.683	- 38631.455	+ 3239.597088	+ 3383.268345
15-2-26	- 150911.768	- 38633.415	+ 3515.662440	+ 3665.057445
15-2-27	- 150913.819	- 38635.411	+ 3803.261885	+ 3957.816648
15-2-28	- 150915.833	- 38637.450	+ 4101.762363	+ 4262.521550
15-2-29	- 150917.779	- 38639.540	+ 4410.823550	+ 4580.036820
15-2-30	- 150919.693	- 38641.674	+ 4732.661220	+ 4908.322046
15-2-31	- 150921.565	- 38643.835	+ 5066.099810	+ 5246.742655
15-2-32	- 150923.396	- 38646.031	+ 5409.063660	+ 5595.758515
15-2-33	- 150925.186	- 38648.265	+ 5762.436766	+ 5955.707940
15-2-34	- 150926.930	- 38650.537	+ 6126.276450	+ 6326.524882
15-2-35	- 150928.609	- 38652.853	+ 6499.513033	+ 6708.631290
15-2-36	- 150930.259	- 38655.193	+ 6884.578927	+ 7098.316537
15-2-37	- 150931.874	- 38657.552	+ 7278.521682	+ 7496.665968
15-2-38	- 150933.433	- 38659.954	+ 7679.336016	+ 7906.373796
15-2-39	- 150934.949	- 38662.382	+ 8090.732346	+ 8323.817406
15-2-49	- 150935.818	- 38663.803	+ 8472.598476	+ 8610.151047
15-2-53	- 150935.532	- 38664.963	+ 8647.348196	+ 8823.144734
15-2-54	- 150911.076	- 38678.107	+ 7215.830188	+ 10585.997924
15-2-60	- 150879.781	- 38655.549	+ 6231.454567	+ 6170.160724
15-2-59	- 150901.968	- 38624.862	+ 5664.220432	+ 1983.515222
			+127095.813940	+130190.587506
		倍面積	= 3094.773566	
		面積	= 1547.386783	

8 LOT

点 名	X	Y	(X-X0)*(Y1-Y0)	(XN-1-X0)*(Y-Y0)
X0-Y0	- 150700.000	- 38600.000		
15-2-43	- 150831.820	- 38626.688		
15-2-44	- 150813.364	- 38616.913	+ 3025.458432	+ 2229.471660

* * * * * 各 筆 面 積 計 算 書 * * * * *

点 名	X	Y	(X-X0)*(YN-1-Y0)	(XN-1-X0)*(Y-Y0)
15-2-45	- 150800.395	- 38618.551	+ 1697.980635	+ 2103.015564
15-2-46	- 150798.826	- 38617.263	+ 1833.321126	+ 1733.118885
15-2-55	- 150797.682	- 38604.509	+ 1686.284366	+ 445.606434
15-2-63	- 150812.126	- 38603.186	+ 505.576134	+ 311.214852
15-2-64	- 150813.971	- 38603.868	+ 363.111606	+ 433.703368
15-2-66	- 150837.108	- 38612.357	+ 530.333744	+ 1408.339647
15-2-43	- 150831.820	- 38626.688	+ 1628.899740	+ 3659.138304
			+ 11270.965783	+ 12323.608714
		倍面積	= 1052.642931	
		面積	= 526.321465	

210

点 名	X	Y	(X-X0)*(YN-1-Y0)	(XN-1-X0)*(Y-Y0)
X0-Y0	- 150900.000	- 38600.000		
15-2-53	- 150935.532	- 38664.963		
15-2-50	- 150935.046	- 38666.938	+ 2276.693298	+ 2378.441016
15-2-51	- 150913.511	- 38678.478	+ 904.399318	+ 2750.339988
15-2-52	- 150911.452	- 38678.378	+ 898.730056	+ 1058.965158
15-2-54	- 150911.076	- 38678.107	+ 868.114728	+ 894.481364
15-2-53	- 150935.532	- 38664.963	+ 2775.297924	+ 719.530188
			+ 7723.235324	+ 7801.757714
		倍面積	= 78.522390	
		面積	= 39.261195	

1 スミナリ

点 名	X	Y	(X-X0)*(YN-1-Y0)	(XN-1-X0)*(Y-Y0)
X0-Y0	- 150700.000	- 38600.000		
15-2-1	- 150798.958	- 38618.732		
15-2-45	- 150800.395	- 38618.551	+ 1880.599140	+ 1835.769858
15-2-46	- 150798.826	- 38617.263	+ 1833.321126	+ 1733.118885
15-2-1	- 150798.958	- 38618.732	+ 1708.311954	+ 1851.208632
			+ 5422.232220	+ 5420.097375
		倍面積	= 2.134845	
		面積	= 1.067422	

2 スミナリ

点 名	X	Y	(X-X0)*(YN-1-Y0)	(XN-1-X0)*(Y-Y0)
X0-Y0	- 150700.000	- 38500.000		
15-2-2	- 150795.289	- 38577.816		
15-2-47	- 150795.539	- 38580.605	+ 7434.462824	+ 7680.769845
15-2-48	- 150797.929	- 38578.792	+ 7893.567045	+ 7527.708888
15-2-2	- 150795.289	- 38577.816	+ 7508.010888	+ 7620.443064

* * * * * 各 筆 面 積 計 算 書 * * * * *

点 名	X	Y	(X-X0)*(YN-1-Y0)	(XN-1-X0)*(Y-Y0)
			+ 22836.040757	+ 22828.921797
		倍面積	= 7.118960	
		面積	= 3.559480	

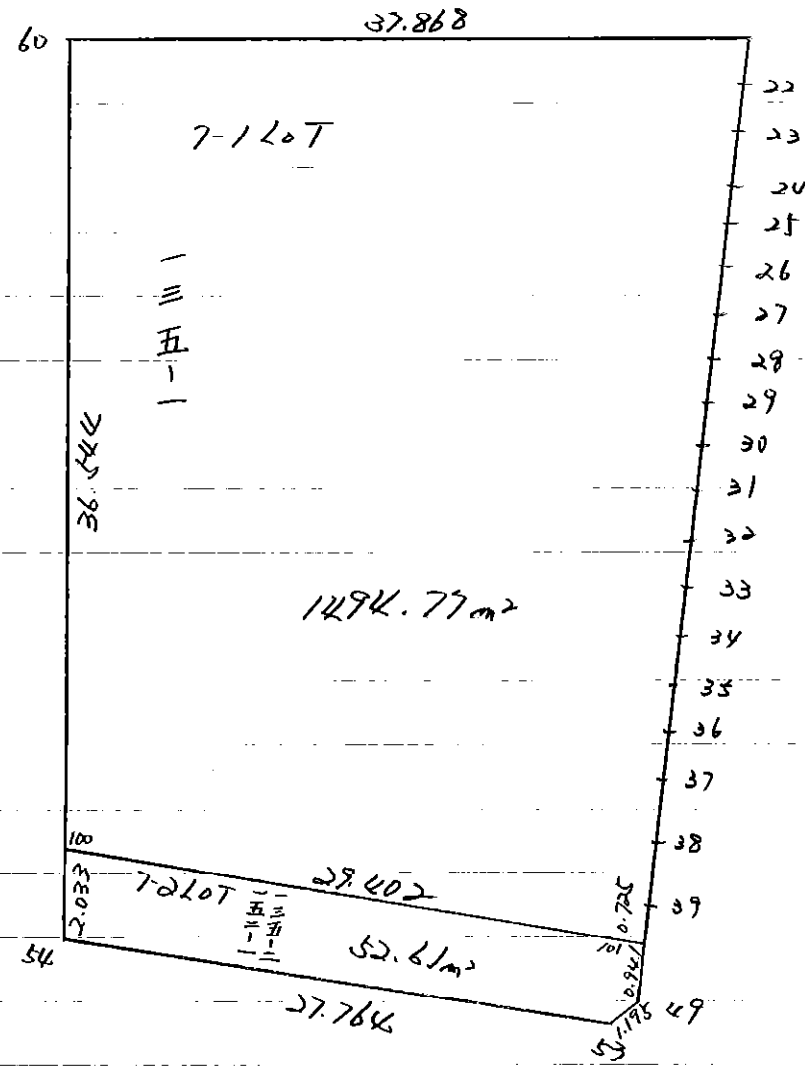
40 区判

点 名	X	Y	(X-X0)*(YN-1-Y0)	(XN-1-X0)*(Y-Y0)
X0・Y0	- 150900.000	- 38600.000		
15-2-40	- 150937.071	- 38665.853		
15-2-49	- 150935.818	- 38663.803	+ 2358.722754	+ 2365.241013
15-2-50	- 150935.046	- 38666.938	+ 2236.039938	+ 2397.585284
15-2-40	- 150937.071	- 38665.853	+ 2481.458598	+ 2307.884238
			+ 7076.221290	+ 7070.710535
		倍面積	= 5.510755	
		面積	= 2.755377	

41 区判

点 名	X	Y	(X-X0)*(YN-1-Y0)	(XN-1-X0)*(Y-Y0)
X0・Y0	- 150900.000	- 38600.000		
15-2-41	- 150912.409	- 38679.068		
15-2-51	- 150913.511	- 38678.478	+ 1068.287748	+ 973.833502
15-2-52	- 150911.452	- 38678.378	+ 898.730056	+ 1058.965158
15-2-41	- 150912.409	- 38679.068	+ 972.592602	+ 905.486736
			+ 2939.610406	+ 2938.285396
		倍面積	= 1.325010	
		面積	= 0.662505	

15-2 Block



* * * * 7-1 LOT

面積計算書

* * * * NO 1

点名	X	DX	DMD.1	Y	DY	DMD.2	DX * DMD.2	DY * DMD.1
15-2-59	- 150901.968			- 38624.862				
15-2-22	- 150903.188	+ 1.220	+ 1.220	- 38625.838	+ 0.976	+ 0.976	+ 1.190720	+ 1.190720
15-2-23	- 150905.394	+ 2.206	+ 4.646	- 38627.663	+ 1.825	+ 3.777	+ 8.332062	+ 8.478950
15-2-24	- 150907.559	+ 2.165	+ 9.017	- 38629.536	+ 1.873	+ 7.475	+ 16.183375	+ 16.888841
15-2-25	- 150909.683	+ 2.124	+ 13.306	- 38631.455	+ 1.919	+ 11.267	+ 23.931108	+ 25.534214
15-2-26	- 150911.768	+ 2.085	+ 17.515	- 38633.415	+ 1.960	+ 15.146	+ 31.579410	+ 34.329400
15-2-27	- 150913.819	+ 2.051	+ 21.651	- 38635.411	+ 1.996	+ 19.102	+ 39.178202	+ 43.215396
15-2-28	- 150915.833	+ 2.014	+ 25.716	- 38637.450	+ 2.039	+ 23.137	+ 46.597918	+ 52.434924
15-2-29	- 150917.779	+ 1.946	+ 29.676	- 38639.540	+ 2.090	+ 27.266	+ 53.059636	+ 62.022840
15-2-30	- 150919.693	+ 1.914	+ 33.536	- 38641.674	+ 2.134	+ 31.490	+ 60.271860	+ 71.565824
15-2-31	- 150921.565	+ 1.872	+ 37.322	- 38643.835	+ 2.161	+ 35.785	+ 66.989520	+ 80.652842
15-2-32	- 150923.396	+ 1.831	+ 41.025	- 38646.031	+ 2.196	+ 40.142	+ 73.500002	+ 90.090900
15-2-33	- 150925.186	+ 1.790	+ 44.646	- 38648.265	+ 2.234	+ 44.572	+ 79.783880	+ 99.739164
15-2-34	- 150926.930	+ 1.744	+ 48.180	- 38650.537	+ 2.272	+ 49.078	+ 85.592032	+ 109.464960
15-2-35	- 150928.609	+ 1.679	+ 51.603	- 38652.853	+ 2.316	+ 53.666	+ 90.105214	+ 119.512548
15-2-36	- 150930.259	+ 1.650	+ 54.932	- 38655.193	+ 2.340	+ 58.322	+ 96.231300	+ 128.540880
15-2-37	- 150931.874	+ 1.615	+ 58.197	- 38657.552	+ 2.359	+ 63.021	+ 101.778915	+ 137.286723
15-2-38	- 150933.433	+ 1.559	+ 61.371	- 38659.954	+ 2.402	+ 67.782	+ 105.672138	+ 147.413142
15-2-39	- 150934.949	+ 1.516	+ 64.446	- 38662.382	+ 2.428	+ 72.612	+ 110.079792	+ 156.474888
15-2-101	- 150935.327	+ 0.378	+ 66.340	- 38663.001	+ 0.619	+ 75.659	+ 28.599102	+ 41.064460
15-2-100	- 150909.427	- 25.900	+ 40.818	- 38676.918	+ 13.917	+ 90.195	+ 2336.050500	+ 568.064106
15-2-60	- 150879.781	- 29.646	- 14.728	- 38655.549	- 21.369	+ 82.743	+ 2452.998978	+ 314.722632
15-2-59	- 150901.968	+ 22.187	- 22.187	- 38624.862	- 30.687	+ 30.687	+ 680.852469	+ 680.852469
		+ 55.546			+ 52.056		+ 1799.508655	+ 2989.540823
		- 55.546			- 52.056		- 4789.049478	+ 0.000000
							- 2989.540823	+ 2989.540823

面積 = 1494.770411

* * * * 7-2 LOT

面積計算書

* * * * NO 1

点名	X	DX	DMD.1	Y	DY	DMD.2	DX * DMD.2	DY * DMD.1
15-2-101	- 150935.327			- 38663.001				
15-2-49	- 150935.818	+ 0.491	+ 0.491	- 38663.803	+ 0.802	+ 0.802	+ 0.393782	+ 0.393782
15-2-53	- 150935.532	- 0.286	+ 0.696	- 38664.963	+ 1.160	+ 2.764	+ 0.790504	+ 0.807360
15-2-54	- 150911.076	- 24.456	- 24.046	- 38678.107	+ 13.144	+ 17.068	- 417.415008	- 316.060624
15-2-100	- 150909.427	- 1.649	- 50.151	- 38676.918	- 1.189	+ 29.023	- 47.858927	+ 59.629539
15-2-101	- 150935.327	+ 25.900	- 25.900	- 38663.001	- 13.917	+ 13.917	+ 360.450300	+ 360.450300
		+ 26.391			+ 15.106		+ 360.844082	+ 421.280981
		- 26.391			- 15.106		- 466.064439	- 316.060624
							- 105.220357	+ 105.220357

面積 = 52.610178