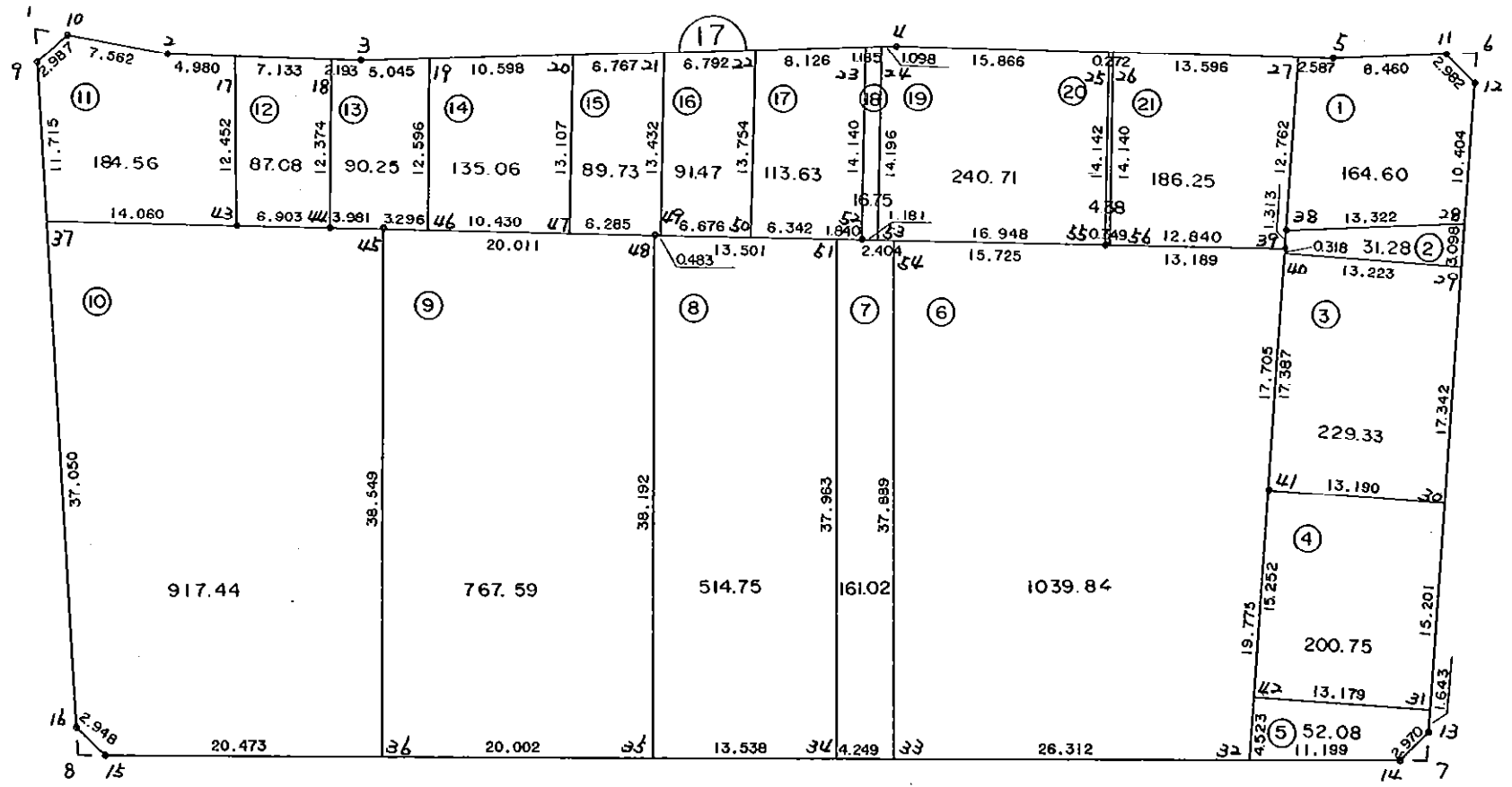


1 7 B L O C K



* * * 各筆面積 集計表 * * *

街区名・筆名	各筆面積	隅切面積
17 BLOCK	5318.64	
1 LOT	164.60	
2 LOT	31.28	
3 LOT	229.33	
4 LOT	200.75	
5 LOT	52.08	
6 LOT	1039.84	
7 LOT	161.02	
8 LOT	514.75	
9 LOT	767.59	
10 LOT	917.44	
11 LOT	184.56	
12 LOT	87.08	
13 LOT	90.25	
14 LOT	135.06	
15 LOT	89.73	
16 LOT	91.47	
17 LOT	113.63	
18 LOT	16.75	
19 LOT	240.71	
20 LOT	4.38	
21 LOT	186.25	
1 スミキリ		2.83
6 スミキリ		2.48
7 スミキリ		2.05
8 スミキリ		2.04
合計 =	5318.55	9.40

* * * * * 各 筆 面 積 計 算 書 * * * * *

17 BLOCK

点 名	X	Y	(X-X0)*(YN-1-Y0)	(XN-1-X0)*(Y-Y0)
X0·Y0	- 150700.000	- 38600.000		
17-9	- 150761.033	- 38802.289		
17-10	- 150758.756	- 38800.355	+ 11885.692484	+ 12228.266715
17-2	- 150759.031	- 38792.798	+ 11827.156005	+ 11328.039288
17-3	- 150757.442	- 38778.581	+ 11074.702716	+ 10541.815011
17-4	- 150750.725	- 38739.544	+ 9058.521225	+ 8015.686448
17-5	- 150746.973	- 38707.442	+ 6554.800312	+ 5449.995450
17-11	- 150745.442	- 38699.122	+ 4882.379364	+ 4656.057706
17-12	- 150747.238	- 38696.742	+ 4682.325036	+ 4396.149964
17-13	- 150794.810	- 38693.418	+ 9172.109020	+ 4412.879484
17-14	- 150797.136	- 38695.265	+ 9074.250848	+ 9032.074650
17-15	- 150810.501	- 38790.101	+ 10526.877765	+ 18465.650736
17-16	- 150808.809	- 38792.515	+ 20684.699709	+ 21273.100015
17-9	- 150761.033	- 38802.289	+ 11749.767995	+ 22010.863801
			+121173.282479	+131810.579268
		倍面積	= 10637.296789	
		面積	= 5318.648394	

1 LOT

点 名	X	Y	(X-X0)*(YN-1-Y0)	(XN-1-X0)*(Y-Y0)
X0·Y0	- 150700.000	- 38600.000		
17-27	- 150747.273	- 38710.012		
17-5	- 150746.973	- 38707.442	+ 5167.593676	+ 5079.105666
17-11	- 150745.442	- 38699.122	+ 4882.379364	+ 4656.057706
17-12	- 150747.238	- 38696.742	+ 4682.325036	+ 4396.149964
17-28	- 150757.617	- 38696.017	+ 5573.983814	+ 4535.651046
17-38	- 150760.004	- 38709.123	+ 5761.404068	+ 6287.339891
17-27	- 150747.273	- 38710.012	+ 5158.571579	+ 6601.160048
			+ 31226.257537	+ 31555.464321
		倍面積	= 329.206784	
		面積	= 164.603392	

2 LOT

点 名	X	Y	(X-X0)*(YN-1-Y0)	(XN-1-X0)*(Y-Y0)
X0·Y0	- 150700.000	- 38600.000		
17-28	- 150757.617	- 38696.017		
17-29	- 150760.707	- 38695.801	+ 5828.904019	+ 5519.766217
17-40	- 150761.630	- 38708.992	+ 5904.215630	+ 6616.577344
17-39	- 150761.313	- 38709.015	+ 6682.626496	+ 6718.594450
17-38	- 150760.004	- 38709.123	+ 6541.336060	+ 6690.658499
17-28	- 150757.617	- 38696.017	+ 6287.339891	+ 5761.404068
			+ 31244.422096	+ 31307.000578
		倍面積	= 62.578482	
		面積	= 31.289241	

* * * * * 各 筆 面 積 計 算 書 * * * * *

3 LOT

点 名	X	Y	(X-X0)*(YN-1-Y0)	(XN-1-X0)*(Y-Y0)
X0·Y0	- 150700.000	- 38600.000		
17-29	- 150760.707	- 38695.801		
17-30	- 150778.007	- 38694.593	+ 7473.148607	+ 5742.457251
17-41	- 150778.973	- 38707.748	+ 7470.292989	+ 8405.098236
17-40	- 150761.630	- 38708.992	+ 6640.509240	+ 8607.425216
17-29	- 150760.707	- 38695.801	+ 6616.577344	+ 5904.215630
			+ 28200.528180	+ 28659.196333
		倍面積	= 458.668153	
		面積	= 229.334076	

4 LOT

点 名	X	Y	(X-X0)*(YN-1-Y0)	(XN-1-X0)*(Y-Y0)
X0·Y0	- 150700.000	- 38600.000		
17-30	- 150778.007	- 38694.593		
17-31	- 150793.171	- 38693.533	+ 8813.324403	+ 7296.228731
17-42	- 150794.187	- 38706.673	+ 8809.592671	+ 9938.830083
17-41	- 150778.973	- 38707.748	+ 8424.286829	+ 10148.460876
17-30	- 150778.007	- 38694.593	+ 8405.098236	+ 7470.292989
			+ 34452.302139	+ 34853.812679
		倍面積	= 401.510540	
		面積	= 200.755270	

5 LOT

点 名	X	Y	(X-X0)*(YN-1-Y0)	(XN-1-X0)*(Y-Y0)
X0·Y0	- 150700.000	- 38600.000		
17-31	- 150793.171	- 38693.533		
17-13	- 150794.810	- 38693.418	+ 8867.863730	+ 8703.848478
17-14	- 150797.136	- 38695.265	+ 9074.250848	+ 9032.074650
17-32	- 150798.699	- 38706.354	+ 9402.560235	+ 10330.802144
17-42	- 150794.187	- 38706.673	+ 10017.164198	+ 10528.518427
17-31	- 150793.171	- 38693.533	+ 9938.830083	+ 8809.592671
			+ 47300.669094	+ 47404.836370
		倍面積	= 104.167276	
		面積	= 52.083638	

6 LOT

点 名	X	Y	(X-X0)*(YN-1-Y0)	(XN-1-X0)*(Y-Y0)
X0·Y0	- 150700.000	- 38700.000		
17-32	- 150798.699	- 38706.354		
17-33	- 150802.371	- 38732.409	+ 650.465334	+ 3198.735891

* * * * * 各 筆 面 積 計 算 書 * * * * *

点 名	X	Y	(X-X0)*(YN-1-Y0)	(XN-1-X0)*(Y-Y0)
17-54	- 150764.855	- 38737.711	+ 2101.885695	+ 3860.512781
17-55	- 150762.925	- 38722.105	+ 2372.964675	+ 1433.619775
17-39	- 150761.313	- 38709.015	+ 1355.323865	+ 567.268875
17-41	- 150778.973	- 38707.748	+ 711.941595	+ 475.053124
17-32	- 150798.699	- 38706.354	+ 764.719852	+ 501.794442
			+ 7957.301016	+ 10036.984888
		倍面積	= 2079.683872	
		面積	= 1039.841936	

7 LOT

点 名	X	Y	(X-X0)*(YN-1-Y0)	(XN-1-X0)*(Y-Y0)
X0·Y0	- 150700.000	- 38700.000		
17-33	- 150802.371	- 38732.409		
17-34	- 150802.964	- 38736.616	+ 3336.960276	+ 3748.416536
17-51	- 150765.374	- 38741.923	+ 2393.734384	+ 4316.559772
17-52	- 150765.150	- 38740.097	+ 2731.283450	+ 2621.301278
17-54	- 150764.855	- 38737.711	+ 2600.490935	+ 2456.871650
17-33	- 150802.371	- 38732.409	+ 3860.512781	+ 2101.885695
			+ 14922.981826	+ 15245.034931
		倍面積	= 322.053105	
		面積	= 161.026552	

8 LOT

点 名	X	Y	(X-X0)*(YN-1-Y0)	(XN-1-X0)*(Y-Y0)
X0·Y0	- 150700.000	- 38700.000		
17-34	- 150802.964	- 38736.616		
17-35	- 150804.853	- 38750.022	+ 3839.297448	+ 5150.465208
17-48	- 150767.031	- 38755.322	+ 3353.024682	+ 5800.677666
17-51	- 150765.374	- 38741.923	+ 3616.620428	+ 2810.140613
17-34	- 150802.964	- 38736.616	+ 4316.559772	+ 2393.734384
			+ 15125.502330	+ 16155.017871
		倍面積	= 1029.515541	
		面積	= 514.757770	

9 LOT

点 名	X	Y	(X-X0)*(YN-1-Y0)	(XN-1-X0)*(Y-Y0)
X0·Y0	- 150700.000	- 38700.000		
17-35	- 150804.853	- 38750.022		
17-36	- 150807.644	- 38769.828	+ 5384.568168	+ 7321.675284
17-45	- 150769.469	- 38775.184	+ 4850.881332	+ 8093.106496
17-48	- 150767.031	- 38755.322	+ 5039.658704	+ 3843.164018
17-35	- 150804.853	- 38750.022	+ 5800.677666	+ 3353.024682

* * * * * 各 筆 面 積 計 算 書 * * * * *

点 名	X	Y	(X-X0)*(YN-1-Y0)	(XN-1-X0)*(Y-Y0)
			+ 21075.785870	+ 22610.970480
		倍面積	= 1535.184610	
		面積	= 767.592305	

10 LOT

点 名	X	Y	(X-X0)*(YN-1-Y0)	(XN-1-X0)*(Y-Y0)
X0-Y0	- 150700.000	- 38700.000		
17-36	- 150807.644	- 38769.828		
17-15	- 150810.501	- 38790.101	+ 7716.063828	+ 9698.832044
17-16	- 150808.809	- 38792.515	+ 9803.799709	+ 10223.000015
17-37	- 150772.510	- 38799.941	+ 6708.262650	+ 10874.480269
17-43	- 150770.790	- 38785.987	+ 7074.823390	+ 6234.917370
17-44	- 150769.953	- 38779.135	+ 6015.048611	+ 5601.966650
17-45	- 150769.469	- 38775.184	+ 5497.429315	+ 5259.346352
17-36	- 150807.644	- 38769.828	+ 8093.106496	+ 4850.881332
			+ 50908.533999	+ 52743.424032
		倍面積	= 1834.890033	
		面積	= 917.445016	

11 LOT

点 名	X	Y	(X-X0)*(YN-1-Y0)	(XN-1-X0)*(Y-Y0)
X0-Y0	- 150700.000	- 38700.000		
17-37	- 150772.510	- 38799.941		
17-9	- 150761.033	- 38802.289	+ 6099.699053	+ 7416.975390
17-10	- 150758.756	- 38800.355	+ 6010.092484	+ 6124.966715
17-2	- 150759.031	- 38792.798	+ 5924.056005	+ 5452.439288
17-17	- 150758.478	- 38787.849	+ 5426.641444	+ 5185.814319
17-43	- 150770.790	- 38785.987	+ 6218.830710	+ 5028.347786
17-37	- 150772.510	- 38799.941	+ 6234.917370	+ 7074.823390
			+ 35914.237066	+ 36283.366888
		倍面積	= 369.129822	
		面積	= 184.564911	

12 LOT

点 名	X	Y	(X-X0)*(YN-1-Y0)	(XN-1-X0)*(Y-Y0)
X0-Y0	- 150700.000	- 38700.000		
17-17	- 150758.478	- 38787.849		
17-18	- 150757.686	- 38780.760	+ 5067.657414	+ 4722.683280
17-44	- 150769.953	- 38779.135	+ 5649.404280	+ 4564.981610
17-43	- 150770.790	- 38785.987	+ 5601.966650	+ 6015.048611
17-17	- 150758.478	- 38787.849	+ 5028.347786	+ 6218.830710
			+ 21347.376130	+ 21521.544211
		倍面積	= 174.168081	
		面積	= 87.084040	

* * * * * 各 筆 面 積 計 算 書 * * * * *

13 LOT

点 名	X	Y	(X-X0)*(YN-1-Y0)	(XN-1-X0)*(Y-Y0)
X0·Y0	- 150700.000	- 38700.000		
17-18	- 150757.686	- 38780.760		
17-3	- 150757.442	- 38778.581	+ 4639.015920	+ 4533.023566
17-19	- 150756.586	- 38773.609	+ 4446.584466	+ 4228.248178
17-46	- 150769.067	- 38771.913	+ 5083.952803	+ 4069.269018
17-45	- 150769.469	- 38775.184	+ 4995.724197	+ 5192.733328
17-44	- 150769.953	- 38779.135	+ 5259.346352	+ 5497.429315
17-18	- 150757.686	- 38780.760	+ 4564.981610	+ 5649.404280
			+ 28989.605348	+ 29170.107685
		倍面積	= 180.502337	
		面積	= 90.251168	

14 LOT

点 名	X	Y	(X-X0)*(YN-1-Y0)	(XN-1-X0)*(Y-Y0)
X0·Y0	- 150700.000	- 38700.000		
17-19	- 150756.586	- 38773.609		
17-20	- 150754.789	- 38763.164	+ 4032.963501	+ 3574.198104
17-47	- 150767.797	- 38761.560	+ 4282.329708	+ 3372.810840
17-46	- 150769.067	- 38771.913	+ 4251.764520	+ 4875.485661
17-19	- 150756.586	- 38773.609	+ 4069.269018	+ 5083.952803
			+ 16636.326747	+ 16906.447408
		倍面積	= 270.120661	
		面積	= 135.060330	

15 LOT

点 名	X	Y	(X-X0)*(YN-1-Y0)	(XN-1-X0)*(Y-Y0)
X0·Y0	- 150700.000	- 38700.000		
17-20	- 150754.789	- 38763.164		
17-21	- 150753.642	- 38756.496	+ 3388.243288	+ 3095.359344
17-49	- 150766.972	- 38754.843	+ 3783.650112	+ 2941.888206
17-48	- 150767.031	- 38755.322	+ 3676.181133	+ 3705.024984
17-47	- 150767.797	- 38761.560	+ 3750.665634	+ 4126.428360
17-20	- 150754.789	- 38763.164	+ 3372.810840	+ 4282.329708
			+ 17971.551007	+ 18151.030602
		倍面積	= 179.479595	
		面積	= 89.739797	

16 LOT

点 名	X	Y	(X-X0)*(YN-1-Y0)	(XN-1-X0)*(Y-Y0)
X0·Y0	- 150700.000	- 38700.000		
17-21	- 150753.642	- 38756.496		
17-22	- 150752.490	- 38749.802	+ 2965.475040	+ 2671.478884

* * * * * 各 筆 面 積 計 算 書 * * * * *

点 名	X	Y	(X-X0)*(YN-1-Y0)	(XN-1-X0)*(Y-Y0)
17-50	- 150766.152	- 38748.217	+ 3294.501904	+ 2530.910330
17-49	- 150766.972	- 38754.843	+ 3229.188924	+ 3627.974136
17-21	- 150753.642	- 38756.496	+ 2941.888206	+ 3783.650112
			+ 12431.054074	+ 12614.013462
		倍面積	= 182.959388	
		面積	= 91.479694	

17 LOT

点 名	X	Y	(X-X0)*(YN-1-Y0)	(XN-1-X0)*(Y-Y0)
X0-Y0	- 150700.000	- 38700.000		
17-22	- 150752.490	- 38749.802		
17-23	- 150751.112	- 38741.794	+ 2545.479824	+ 2193.767060
17-52	- 150765.150	- 38740.097	+ 2722.879100	+ 2049.437864
17-51	- 150765.374	- 38741.923	+ 2621.301278	+ 2731.283450
17-50	- 150766.152	- 38748.217	+ 2773.290296	+ 3152.138158
17-22	- 150752.490	- 38749.802	+ 2530.910330	+ 3294.501904
			+ 13193.860828	+ 13421.128436
		倍面積	= 227.267608	
		面積	= 113.633804	

18 LOT

点 名	X	Y	(X-X0)*(YN-1-Y0)	(XN-1-X0)*(Y-Y0)
X0-Y0	- 150700.000	- 38700.000		
17-23	- 150751.112	- 38741.794		
17-24	- 150750.911	- 38740.626	+ 2127.774334	+ 2076.476112
17-53	- 150765.005	- 38738.925	+ 2640.893130	+ 1981.710675
17-52	- 150765.150	- 38740.097	+ 2535.963750	+ 2606.505485
17-23	- 150751.112	- 38741.794	+ 2049.437864	+ 2722.879100
			+ 9354.069078	+ 9387.571372
		倍面積	= 33.502294	
		面積	= 16.751147	

19 LOT

点 名	X	Y	(X-X0)*(YN-1-Y0)	(XN-1-X0)*(Y-Y0)
X0-Y0	- 150700.000	- 38700.000		
17-24	- 150750.911	- 38740.626		
17-4	- 150750.725	- 38739.544	+ 2060.753850	+ 2013.224584
17-25	- 150748.883	- 38723.785	+ 1933.029352	+ 1206.494125
17-55	- 150762.925	- 38722.105	+ 1496.671125	+ 1080.558715
17-53	- 150765.005	- 38738.925	+ 1436.935525	+ 2449.355625
17-24	- 150750.911	- 38740.626	+ 1981.710675	+ 2640.893130
			+ 8909.100527	+ 9390.526179
		倍面積	= 481.425652	
		面積	= 240.712826	

* * * * * 各 筆 面 積 計 算 書 * * * * *

20 LOT

点 名	X	Y	(X-X0)*(YN-1-Y0)	(XN-1-X0)*(Y-Y0)
X0-Y0	- 150700.000	- 38700.000		
17-25	- 150748.883	- 38723.785		
17-26	- 150748.851	- 38723.515	+ 1161.921035	+ 1149.483745
17-56	- 150762.882	- 38721.759	+ 1478.670230	+ 1062.948909
17-55	- 150762.925	- 38722.105	+ 1369.185075	+ 1390.006610
17-25	- 150748.883	- 38723.785	+ 1080.558715	+ 1496.671125
			+ 5090.335055	+ 5099.110389
		倍面積	= 8.775334	
		面積	= 4.387667	

21 LOT

点 名	X	Y	(X-X0)*(YN-1-Y0)	(XN-1-X0)*(Y-Y0)
X0-Y0	- 150700.000	- 38700.000		
17-26	- 150748.851	- 38723.515		
17-27	- 150747.273	- 38710.012	+ 1111.624595	+ 489.096212
17-38	- 150760.004	- 38709.123	+ 600.760048	+ 431.271579
17-39	- 150761.313	- 38709.015	+ 559.358499	+ 540.936060
17-56	- 150762.882	- 38721.759	+ 566.881230	+ 1334.109567
17-26	- 150748.851	- 38723.515	+ 1062.948909	+ 1478.670230
			+ 3901.573281	+ 4274.083648
		倍面積	= 372.510367	
		面積	= 186.255183	

1 スミリ

点 名	X	Y	(X-X0)*(YN-1-Y0)	(XN-1-X0)*(Y-Y0)
X0-Y0	- 150700.000	- 38800.000		
17-1	- 150758.668	- 38802.773		
17-9	- 150761.033	- 38802.289	+ 169.244509	+ 134.291052
17-10	- 150758.756	- 38800.355	+ 134.492484	+ 21.666715
17-1	- 150758.668	- 38802.773	+ 20.827140	+ 162.930388
			+ 324.564133	+ 318.888155
		倍面積	= 5.675978	
		面積	= 2.837989	

6 スミリ

点 名	X	Y	(X-X0)*(YN-1-Y0)	(XN-1-X0)*(Y-Y0)
X0-Y0	- 150700.000	- 38600.000		
17-6	- 150745.033	- 38696.896		
17-11	- 150745.442	- 38699.122	+ 4403.148032	+ 4463.761026
17-12	- 150747.238	- 38696.742	+ 4682.325036	+ 4396.149964

* * * * * 各 筆 面 積 計 算 書 * * * * *

点 名	X	Y	(X-X0)*(YN-1-Y0)	(XN-1-X0)*(Y-Y0)
17-6	- 150745.033	- 38696.896	+ 4356.582486	+ 4577.173248
			+ 13442.055554	+ 13437.084238
		倍面積	= 4.971316	
		面積	= 2.485658	

7 区切り

点 名	X	Y	(X-X0)*(YN-1-Y0)	(XN-1-X0)*(Y-Y0)
X0-Y0	- 150700.000	- 38600.000		
17-7	- 150796.855	- 38693.275		
17-13	- 150794.810	- 38693.418	+ 8843.402750	+ 9048.000390
17-14	- 150797.136	- 38695.265	+ 9074.250848	+ 9032.074650
17-7	- 150796.855	- 38693.275	+ 9226.891575	+ 9060.360400
			+ 27144.545173	+ 27140.435440
		倍面積	= 4.109733	
		面積	= 2.054866	

8 区切り

点 名	X	Y	(X-X0)*(YN-1-Y0)	(XN-1-X0)*(Y-Y0)
X0-Y0	- 150800.000	- 38700.000		
17-8	- 150810.784	- 38792.111		
17-15	- 150810.501	- 38790.101	+ 967.257611	+ 971.649184
17-16	- 150808.809	- 38792.515	+ 793.699709	+ 971.500015
17-8	- 150810.784	- 38792.111	+ 997.681760	+ 811.405799
			+ 2758.639080	+ 2754.554998
		倍面積	= 4.084082	
		面積	= 2.042041	