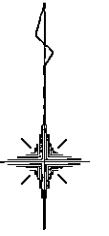
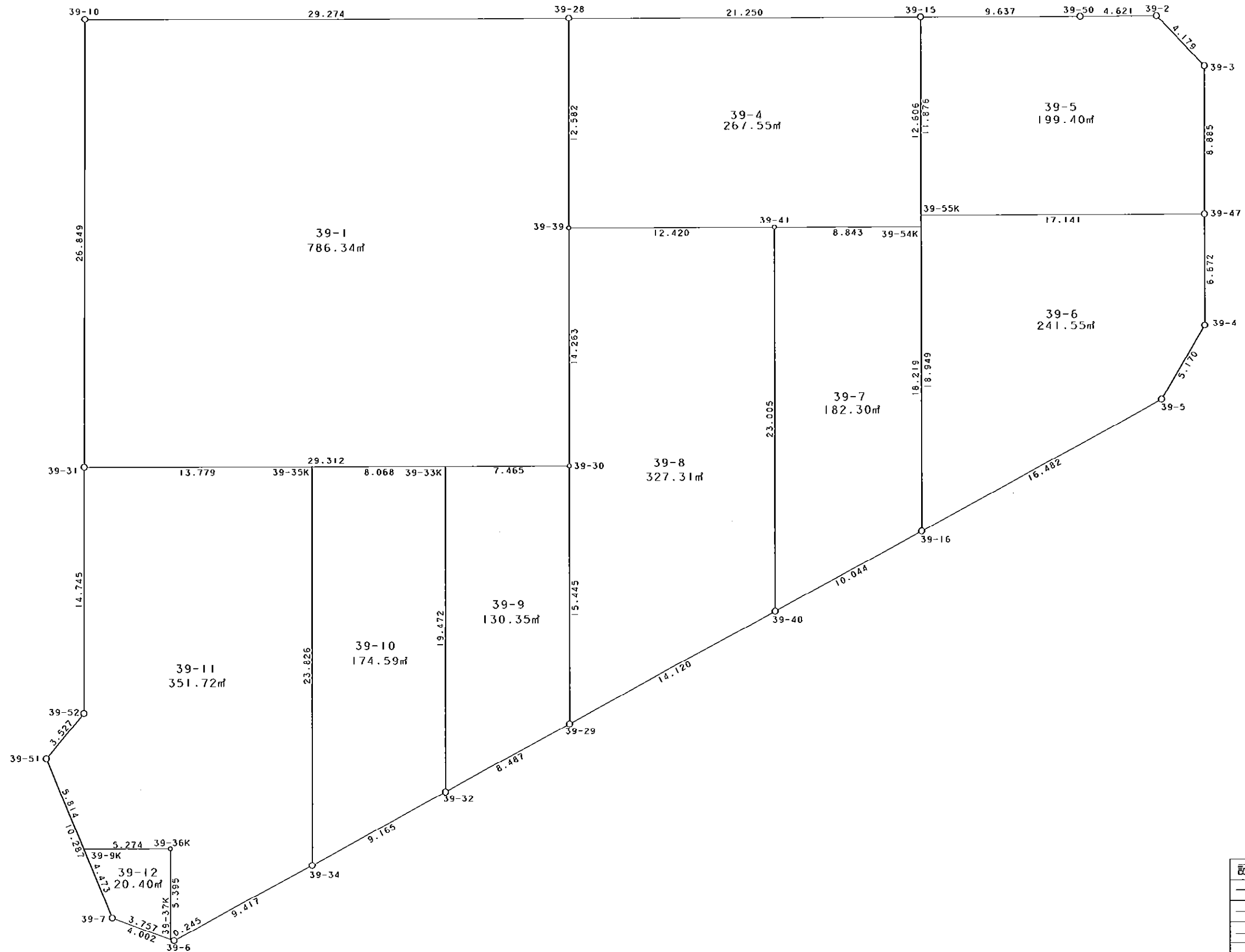


39街区



S = 1 / 250



凡 例

記号	名称
⊙	地区界点
○	街区点
○	画地点(折れ点)
┆	画地点(直線中)

面積 (座標法) 計算書

地番 = 39街区

測点名	[1] X (i)	[2] X (i+1)-X (i-1)	[3] Y (i)	[4] Y (i+1)-Y (i-1)	[2] * [3]	[1] * [4]	方向角	夾角	距離
39-10	-149502.687	-27.003	-40602.018	-29.169	1096376.292054	4360843.877103	179-46-33	90-04-38	26.849
39-31	-149529.536	-41.594	-40601.913	0.169	1688795.969322	-25270.491584	179-45-05	179-58-32	14.745
39-52	-149544.281	-17.462	-40601.849	-2.185	708989.487238	326754.253985	219-36-59	219-51-54	3.527
39-51	-149546.998	-12.177	-40604.098	1.792	494436.101346	-267988.220416	156-52-10	117-15-11	10.287
39-7	-149556.458	-10.801	-40600.057	7.812	438521.215657	-1168335.049896	109-34-33	132-42-23	4.002
39-6	-149557.799	3.170	-40596.286	12.037	-128690.226620	-1800227.226563	61-22-39	131-48-06	9.417
39-34	-149553.288	8.909	-40588.020	16.307	-361598.670180	-2438765.467416	61-19-25	179-56-46	9.165
39-32	-149548.890	8.465	-40579.979	15.490	-343509.522235	-2316512.306100	61-21-59	180-02-34	8.487
39-29	-149544.823	10.836	-40572.530	19.841	-439643.935080	-2967118.833143	61-21-18	179-59-19	14.120
39-40	-149538.054	11.577	-40560.138	21.211	-469564.717626	-3171851.663394	61-24-05	180-02-47	10.044
39-16	-149533.246	12.714	-40551.319	23.281	-515569.469766	-3481283.500126	61-20-09	179-56-04	16.482
39-5	-149525.340	12.367	-40536.857	17.075	-501319.310519	-2553145.180500	30-21-34	149-01-25	5.170
39-4	-149520.879	11.133	-40534.244	2.571	-451267.738452	-384418.179909	359-38-22	149-16-48	6.672
39-47	-149514.207	15.557	-40534.286	-0.078	-630591.887302	11662.108146	359-46-04	180-07-42	8.885
39-3	-149505.322	11.881	-40534.322	-2.950	-481588.279682	441040.699900	315-47-42	136-01-38	4.179
39-2	-149502.326	2.950	-40537.236	-7.535	-119584.846200	1126500.026410	269-25-47	133-38-05	4.621
39-50	-149502.372	-0.095	-40541.857	-14.258	3851.476415	2131604.819976	269-42-31	180-16-44	9.637
39-15	-149502.421	-0.161	-40551.494	-30.887	6528.790534	4617681.277427	269-41-53	179-59-22	21.250
39-28	-149502.533	-0.266	-40572.744	-50.524	10792.349904	7553465.977292	269-41-55	180-00-02	29.274
合計				倍面積 面積	5363.078808 2681.53	-5363.078808 2681.53			216.813

地番	筆種別	面積	坪数
39-1	筆界	786.34	237.86
39-4	筆界	267.55	80.93
39-5	筆界	199.40	60.32
39-6	筆界	241.55	73.07
39-7	筆界	182.30	55.14
39-8	筆界	327.31	99.01
39-9	筆界	130.35	39.43
39-10	筆界	174.59	52.81
39-11	筆界	351.72	106.39
39-12	筆界	20.40	6.17
	合計	2681.51	811.13

面積 (座標法) 計算書

地番 = 39-1
測点名

	[1] X (i)	[2] X (i+1)-X (i-1)	[3] Y (i)	[4] Y (i+1)-Y (i-1)	[2] * [3]	[1] * [4]	方向角	夾角	距離
39-10	-149502.687	-27.003	-40602.018	-29.169	1096376.292054	4360843.877103	179-46-33	90-04-38	26.849
39-31	-149529.536	-26.691	-40601.913	29.417	1083705.659883	-4398710.360512	89-41-28	89-54-55	29.312
39-30	-149529.378	14.421	-40572.601	29.228	-585097.479021	-4370444.660184	359-39-45	89-58-17	14.263
39-39	-149515.115	26.845	-40572.685	-0.143	-1089173.728825	21380.661445	359-43-53	180-04-08	12.582
39-28	-149502.533	12.428	-40572.744	-29.333	-504238.062432	4385357.800489	269-41-55	89-58-02	29.274
合計					1572.681659	-1572.681659			112.280
				倍面積 面積	786.34	786.34			

面積 (座標法) 計算書

地番 = 39-4
測点名

	[1] X (i)	[2] X (i+1)-X (i-1)	[3] Y (i)	[4] Y (i+1)-Y (i-1)	[2] * [3]	[1] * [4]	方向角	夾角	距離
39-28	-149502.533	-12.694	-40572.744	-21.191	515030.412336	3168108.176803	179-43-53	90-02-00	12.582
39-39	-149515.115	-12.516	-40572.685	12.479	507807.725460	-1865799.120085	89-41-44	89-57-51	12.420
39-41	-149515.049	0.088	-40560.265	21.263	-3569.303320	-3179138.486887	89-51-27	180-09-43	8.843
39-54K	-149515.027	12.628	-40551.422	8.771	-512083.357016	-1311396.301817	359-40-22	89-48-55	12.606
39-15	-149502.421	12.494	-40551.494	-21.322	-506650.366036	3187690.620562	269-41-53	90-01-31	21.250
合計					535.111424	-535.111424			67.701
				倍面積 面積	267.55	267.55			

面積 (座標法) 計算書

地番 = 39-5
測点名

	[1] X (i)	[2] X (i+1)-X (i-1)	[3] Y (i)	[4] Y (i+1)-Y (i-1)	[2] * [3]	[1] * [4]	方向角	夾角	距離
39-15	-149502.421	-11.925	-40551.494	-9.570	483576.565950	1430738.168970	179-40-36	89-58-05	11.876
39-55K	-149514.297	-11.786	-40551.427	17.208	477939.118622	-2572842.022776	89-41-57	90-01-21	17.141
39-47	-149514.207	8.975	-40534.286	17.105	-363795.216850	-2557440.510735	359-46-04	90-04-07	8.885
39-3	-149505.322	11.881	-40534.322	-2.950	-481588.279682	441040.699900	315-47-42	136-01-38	4.179
39-2	-149502.326	2.950	-40537.236	-7.535	-119584.846200	1126500.026410	269-25-47	133-38-05	4.621
39-50	-149502.372	-0.095	-40541.857	-14.258	3851.476415	2131604.819976	269-42-31	180-16-44	9.637
合計					398.818255	-398.818255			56.339
				倍面積 面積	199.40	199.40			

面積 (座標法) 計算書

地番 = 39-6
測点名

	[1] X (i)	[2] X (i+1)-X (i-1)	[3] Y (i)	[4] Y (i+1)-Y (i-1)	[2] * [3]	[1] * [4]	方向角	夾角	距離
39-55K	-149514.297	-19.039	-40551.427	-17.033	772058.618653	2546677.020801	179-40-24	89-58-27	18.949
39-16	-149533.246	-11.043	-40551.319	14.570	447808.215717	-2178699.394220	61-20-09	61-39-45	16.482
39-5	-149525.340	12.367	-40536.857	17.075	-501319.310519	-2553145.180500	30-21-34	149-01-25	5.170
39-4	-149520.879	11.133	-40534.244	2.571	-451267.738452	-384418.179909	359-38-22	149-16-48	6.672
39-47	-149514.207	6.582	-40534.286	-17.183	-266796.670452	2569102.618881	269-41-57	90-03-35	17.141
合計					483.114947	-483.114947			64.414
				倍面積 面積	241.55	241.55			

面積 (座標法) 計算書

地番 = 39-7
測点名

	[1] X (i)	[2] X (i+1)-X (i-1)	[3] Y (i)	[4] Y (i+1)-Y (i-1)	[2]*[3]	[1]*[4]	方向角	夾角	距離
39-41	-149515.049	-23.027	-40560.265	-8.716	933981.222155	1303173.167084	179-41-01	89-49-34	23.005
39-40	-149538.054	-18.197	-40560.138	8.946	738072.831186	-1337767.431084	61-24-05	61-43-04	10.044
39-16	-149533.246	23.027	-40551.319	8.716	-933775.222613	-1303331.772136	359-40-34	118-16-29	18.219
39-54K	-149515.027	18.197	-40551.422	-8.946	-737914.226134	1337561.431542	269-51-27	90-10-53	8.843
合計				倍面積 面積	364.604594 182.30	-364.604594 182.30			60.111

面積 (座標法) 計算書

地番 = 39-8
測点名

	[1] X (i)	[2] X (i+1)-X (i-1)	[3] Y (i)	[4] Y (i+1)-Y (i-1)	[2]*[3]	[1]*[4]	方向角	夾角	距離
39-39	-149515.115	-14.329	-40572.685	-12.336	581366.003365	1844418.458640	179-39-45	89-58-01	14.263
39-30	-149529.378	-29.708	-40572.601	0.155	1205330.830508	-23177.053590	179-44-12	180-04-27	15.445
39-29	-149544.823	-8.676	-40572.530	12.463	352007.270280	-1863777.129049	61-21-18	61-37-06	14.120
39-40	-149538.054	29.774	-40560.138	12.265	-1207637.548812	-1834084.232310	359-41-01	118-19-43	23.005
39-41	-149515.049	22.939	-40560.265	-12.547	-930411.918835	1875965.319803	269-41-44	90-00-43	12.420
合計				倍面積 面積	654.636506 327.31	-654.636506 327.31			79.253

面積 (座標法) 計算書

地番 = 39-9
測点名

	[1] X (i)	[2] X (i+1)-X (i-1)	[3] Y (i)	[4] Y (i+1)-Y (i-1)	[2]*[3]	[1]*[4]	方向角	夾角	距離
39-32	-149548.890	-15.405	-40579.979	7.536	625134.576495	-1127000.435040	61-21-59	61-37-21	8.487
39-29	-149544.823	19.512	-40572.530	7.378	-791651.205360	-1103341.704094	359-44-12	118-22-13	15.445
39-30	-149529.378	15.405	-40572.601	-7.536	-625020.918405	1126853.392608	269-41-35	89-57-23	7.465
39-33K	-149529.418	-19.512	-40580.066	-7.378	791798.247792	1103228.046004	179-44-38	90-03-03	19.472
合計				倍面積 面積	260.700522 130.35	-260.700522 130.35			50.869

面積 (座標法) 計算書

地番 = 39-10
測点名

	[1] X (i)	[2] X (i+1)-X (i-1)	[3] Y (i)	[4] Y (i+1)-Y (i-1)	[2]*[3]	[1]*[4]	方向角	夾角	距離
39-34	-149553.288	-19.428	-40588.020	8.155	788544.052560	-1219607.063640	61-19-25	61-35-52	9.165
39-32	-149548.890	23.870	-40579.979	7.954	-968644.098730	-1189511.871060	359-44-38	118-25-13	19.472
39-33K	-149529.418	19.428	-40580.066	-8.155	-788389.522248	1219412.403790	269-41-15	89-56-37	8.068
39-35K	-149529.462	-23.870	-40588.134	-7.954	968838.758580	1189357.340748	179-43-33	90-02-18	23.826
合計				倍面積 面積	349.190162 174.59	-349.190162 174.59			60.531

面積 (座標法) 計算書

地番 = 39-11

測点名	[1] X (i)	[2] X (i+1)-X (i-1)	[3] Y (i)	[4] Y (i+1)-Y (i-1)	[2] * [3]	[1] * [4]	方向角	夾 角	距 離
39-31	-149529.536	-14.819	-40601.913	-13.715	601679.748747	2050797.586240	179-45-05	90-03-33	14.745
39-52	-149544.281	-17.462	-40601.849	-2.185	708989.487238	326754.253985	219-36-59	219-51-54	3.527
39-51	-149546.998	-8.064	-40604.098	0.035	327431.446272	-5234.144930	156-52-12	117-15-13	5.814
39-9K	-149552.345	-5.324	-40601.814	7.558	216164.057736	-1130316.623510	89-45-00	112-52-48	5.274
39-36K	-149552.322	-5.372	-40596.540	5.297	218084.612880	-792178.649634	179-45-21	270-00-21	5.395
39-37K	-149557.717	-5.477	-40596.517	0.254	222347.123609	-37987.660118	109-32-38	109-47-17	0.245
39-6	-149557.799	4.429	-40596.286	8.497	-179800.950694	-1270792.618103	61-22-39	131-50-01	9.417
39-34	-149553.288	28.337	-40588.020	8.152	-1150142.722740	-1219158.403776	359-43-33	118-20-54	23.826
39-35K	-149529.462	23.752	-40588.134	-13.893	-964049.358768	2077412.815566	269-41-32	89-57-59	13.779
合計				倍面積 面積	703.444280 351.72	-703.444280 351.72			82.022

面積 (座標法) 計算書

地番 = 39-12

測点名	[1] X (i)	[2] X (i+1)-X (i-1)	[3] Y (i)	[4] Y (i+1)-Y (i-1)	[2] * [3]	[1] * [4]	方向角	夾 角	距 離
39-36K	-149552.322	5.372	-40596.540	-5.297	-218084.612880	792178.649634	269-45-00	89-59-39	5.274
39-9K	-149552.345	-4.136	-40601.814	-3.517	167929.102704	525975.597365	156-52-07	67-07-07	4.473
39-7	-149556.458	-5.372	-40600.057	5.297	218103.506204	-792200.558026	109-34-40	132-42-33	3.757
39-37K	-149557.717	4.136	-40596.517	3.517	-167907.194312	-525994.490689	359-45-21	70-10-41	5.395
合計				倍面積 面積	40.801716 20.40	-40.801716 20.40			18.899