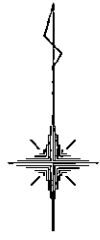
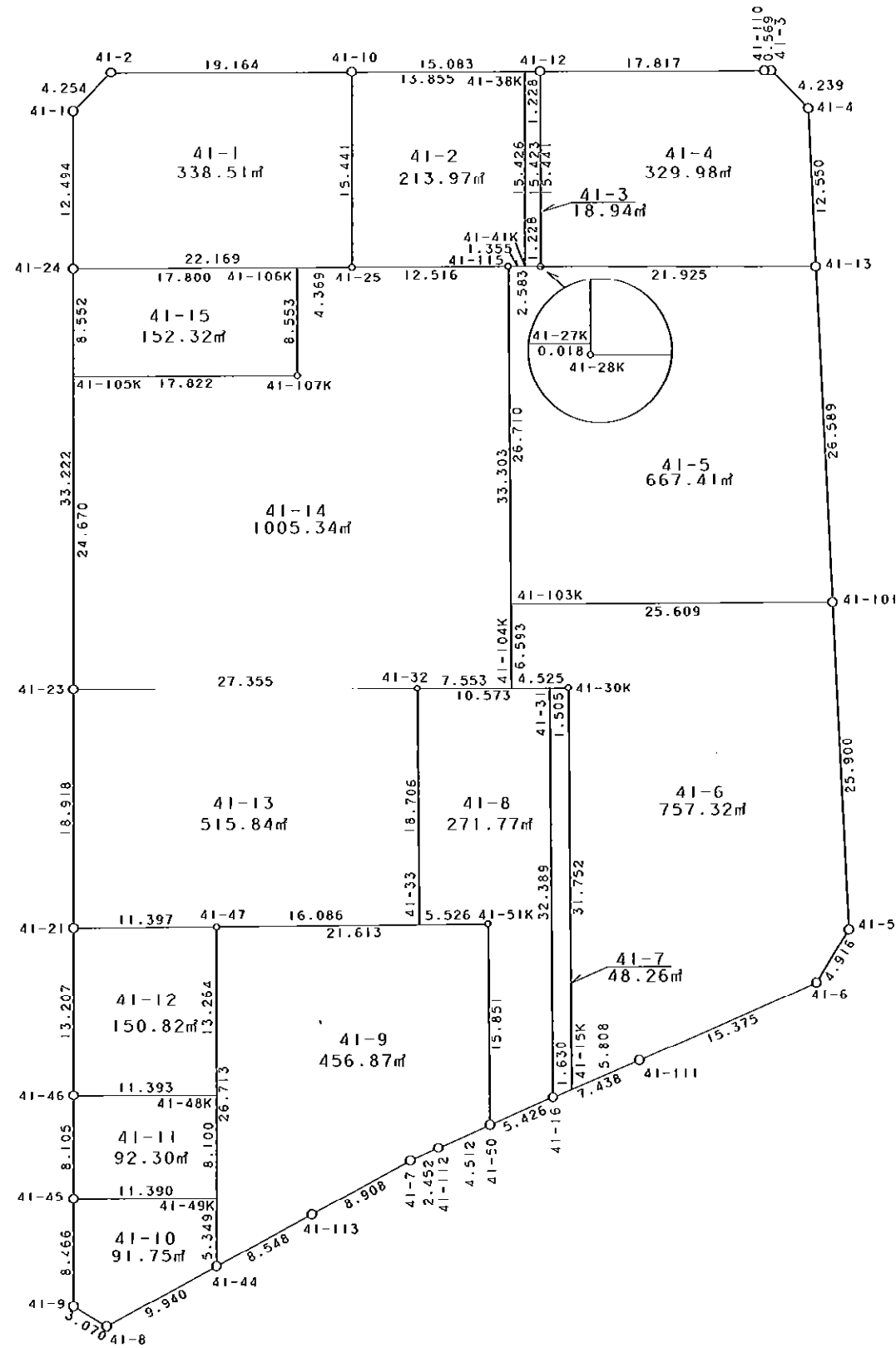


41街区



S = 1 / 500



凡 例

記号	名称
⊙	地区界点
○	街区点
○	画地点(折れ点)
┆	画地点(直線中)

面積 (座標法) 計算書

地番 = 41街区

測点名	[1] X (i)	[2] X (i+1)-X (i-1)	[3] Y (i)	[4] Y (i+1)-Y (i-1)	[2] * [3]	[1] * [4]	方向角	夾 角	距 離
41-2	-149444.942	-3.125	-40463.657	-22.152	126448.928125	3310504.355184	224-37-09	134-54-33	4.254
41-1	-149447.970	-15.522	-40466.645	-2.921	628123.263690	436537.520370	179-41-34	135-04-25	12.494
41-24	-149460.464	-45.716	-40466.578	0.247	1849970.079848	-36916.734608	179-41-22	179-59-48	33.222
41-23	-149493.686	-52.140	-40466.398	0.286	2109917.991720	-42755.194196	179-40-44	179-59-22	18.918
41-21	-149512.604	-32.125	-40466.292	0.177	1299979.630500	-26463.730908	179-41-31	180-00-47	13.207
41-46	-149525.811	-21.312	-40466.221	0.116	862416.101952	-17344.994076	179-40-55	179-59-24	8.105
41-45	-149533.916	-16.571	-40466.176	0.090	670565.002496	-13458.052440	179-41-44	180-00-49	8.466
41-9	-149542.382	-10.020	-40466.131	2.693	405470.632620	-402717.634726	120-24-25	120-42-41	3.070
41-8	-149543.936	3.210	-40463.483	11.372	-129887.780430	-1700613.640192	61-21-43	120-57-18	9.940
41-44	-149539.172	8.853	-40454.759	16.231	-358145.981427	-2427170.300732	61-25-24	180-03-41	8.548
41-113	-149535.083	8.334	-40447.252	15.339	-337087.398168	-2293718.638137	61-32-31	180-07-07	8.908
41-7	-149530.838	5.255	-40439.420	10.066	-212509.152100	-1505177.415308	65-40-20	184-07-49	2.452
41-112	-149529.828	2.811	-40437.186	6.371	-113668.929846	-952654.534188	66-28-29	180-48-09	4.512
41-50	-149528.027	3.959	-40433.049	9.115	-160074.440991	-1362947.966105	66-33-46	180-05-17	5.426
41-16	-149525.869	5.106	-40428.071	11.807	-206425.730526	-1765451.935283	66-39-03	180-05-17	7.438
41-111	-149522.921	9.085	-40421.242	20.926	-367226.983570	-3128916.644846	66-28-28	179-49-25	15.375
41-6	-149516.784	10.333	-40407.145	16.659	-417527.029285	-2490800.104656	31-24-27	144-55-59	4.916
41-5	-149512.588	30.059	-40404.583	1.183	-1214521.360397	-176873.391604	356-56-52	145-32-25	25.900
41-101	-149486.725	52.414	-40405.962	-2.803	-2117838.092268	419011.290175	356-55-48	179-58-56	26.589
41-13	-149460.174	39.085	-40407.386	-2.064	-1579322.681810	308485.799136	357-04-37	180-08-49	12.550
41-4	-149447.640	15.531	-40408.026	-3.638	-627577.051806	543690.514320	314-59-26	137-54-49	4.239
41-3	-149444.643	2.983	-40411.024	-3.567	-120546.084592	533069.041581	268-35-26	133-36-00	0.569
41-110	-149444.657	-0.111	-40411.593	-18.386	4485.686823	2747689.463602	269-41-17	181-05-51	17.817
41-12	-149444.754	-0.188	-40429.410	-32.900	7600.729080	4916732.406600	269-39-16	179-57-59	15.083
41-10	-149444.845	-0.188	-40444.493	-34.247	7603.564684	5118037.606715	269-42-36	180-03-20	19.164
合計				倍面積 面積	10222.914322 5111.45	-10222.914322 5111.45			291.162

地番	筆種別	面積	坪数
41-1	筆界	338.51	102.40
41-2	筆界	213.97	64.72
41-3	筆界	18.94	5.72
41-4	筆界	329.98	99.82
41-5	筆界	667.41	201.89
41-6	筆界	757.32	229.09
41-7	筆界	48.26	14.59
41-8	筆界	271.77	82.21
41-9	筆界	456.87	138.20
41-10	筆界	91.75	27.75
41-11	筆界	92.30	27.92
41-12	筆界	150.82	45.62
41-13	筆界	515.84	156.04
41-14	筆界	1005.34	304.11
41-15	筆界	152.32	46.07
	筆合	5111.40	1546.15

面積 (座標法) 計算書

地番 = 41-1  
測点名

	[1] X (i)	[2] X (i+1)-X (i-1)	[3] Y (i)	[4] Y (i+1)-Y (i-1)	[2] * [3]	[1] * [4]	方向角	夾角	距離
41-2	-149444.942	-3.125	-40463.657	-22.152	126448.928125	3310504.355184	224-37-09	134-54-33	4.254
41-1	-149447.970	-15.522	-40466.645	-2.921	628123.263690	436537.520370	179-41-34	135-04-25	12.494
41-24	-149460.464	-12.316	-40466.578	22.235	498386.374648	-3323253.417040	89-32-24	89-50-50	22.169
41-25	-149460.286	15.619	-40444.410	22.085	-631701.239790	-3300830.416310	359-41-31	90-09-07	15.441
41-10	-149444.845	15.344	-40444.493	-19.247	-620580.300592	2876364.931715	269-42-36	90-01-05	19.164
合計				倍面積 面積	677.026081 338.51	-677.026081 338.51			73.522

面積 (座標法) 計算書

地番 = 41-2  
測点名

	[1] X (i)	[2] X (i+1)-X (i-1)	[3] Y (i)	[4] Y (i+1)-Y (i-1)	[2] * [3]	[1] * [4]	方向角	夾角	距離
41-38K	-149444.761	15.342	-40430.638	-13.954	-620286.848196	2085352.194994	269-39-09	90-01-13	13.855
41-10	-149444.845	-15.525	-40444.493	-13.772	627900.753825	2058154.405340	179-41-31	90-02-22	15.441
41-25	-149460.286	-15.354	-40444.410	12.599	620983.471140	-1883050.143314	89-36-06	89-54-35	12.516
41-115	-149460.199	0.099	-40431.894	13.871	-4002.757506	-2073162.420329	89-29-33	179-53-27	1.355
41-41K	-149460.187	15.438	-40430.539	1.256	-624166.661082	-187721.994872	359-37-56	90-08-23	15.426
合計				倍面積 面積	427.958181 213.97	-427.958181 213.97			58.593

面積 (座標法) 計算書

地番 = 41-3  
測点名

	[1] X (i)	[2] X (i+1)-X (i-1)	[3] Y (i)	[4] Y (i+1)-Y (i-1)	[2] * [3]	[1] * [4]	方向角	夾角	距離
41-41K	-149460.187	-15.416	-40430.539	1.327	623277.189224	-198333.668149	89-32-00	89-54-04	1.228
41-27K	-149460.177	15.433	-40429.311	1.129	-623945.556663	-168740.539833	359-37-56	90-05-56	15.423
41-12	-149444.754	15.416	-40429.410	-1.327	-623259.784560	198313.188558	269-40-24	90-02-28	1.228
41-38K	-149444.761	-15.433	-40430.638	-1.129	623966.036254	168723.135169	179-37-56	89-57-32	15.426
合計				倍面積 面積	37.884255 18.94	-37.884255 18.94			33.305

面積 (座標法) 計算書

地番 = 41-4  
測点名

	[1] X (i)	[2] X (i+1)-X (i-1)	[3] Y (i)	[4] Y (i+1)-Y (i-1)	[2] * [3]	[1] * [4]	方向角	夾角	距離
41-12	-149444.754	-15.538	-40429.410	-17.718	628192.172580	2647862.151372	179-37-58	89-56-41	15.441
41-28K	-149460.195	-15.420	-40429.311	22.024	623419.975620	-3291711.334680	89-56-42	90-18-44	21.925
41-13	-149460.174	12.555	-40407.386	21.285	-507314.731230	-3181259.803590	357-04-37	87-07-55	12.550
41-4	-149447.640	15.531	-40408.026	-3.638	-627577.051806	543690.514320	314-59-26	137-54-49	4.239
41-3	-149444.643	2.983	-40411.024	-3.567	-120546.084592	533069.041581	268-35-26	133-36-00	0.569
41-110	-149444.657	-0.111	-40411.593	-18.386	4485.686823	2747689.463602	269-41-17	181-05-51	17.817
合計				倍面積 面積	659.967395 329.98	-659.967395 329.98			72.541

面積 (座標法) 計算書

地番 = 41-5  
測点名

	[1] X (i)	[2] X (i+1)-X (i-1)	[3] Y (i)	[4] Y (i+1)-Y (i-1)	[2] * [3]	[1] * [4]	方向角	夾角	距離
41-101	-149486.725	26.733	-40405.962	24.184	-1080172.582146	-3615186.957400	356-55-48	87-20-14	26.589
41-13	-149460.174	26.530	-40407.386	-23.349	-1072007.950580	3489745.602726	269-56-42	93-00-54	21.925
41-28K	-149460.195	-0.003	-40429.311	-21.925	121.287933	3276914.775375	0-00-00	270-03-18	0.018
41-27K	-149460.177	-0.004	-40429.311	-2.583	161.717244	386055.637191	269-30-43	89-30-43	2.583
41-115	-149460.199	-26.730	-40431.894	-2.259	1080744.526620	337630.589541	179-18-18	89-47-35	26.710
41-103K	-149486.907	-26.526	-40431.570	25.932	1072487.825820	-3876494.472324	89-35-34	90-17-16	25.609
合計				倍面積 面積	1334.824891 667.41	-1334.824891 667.41			103.434

面積 (座標法) 計算書

地番 = 41-6  
測点名

	[1] X (i)	[2] X (i+1)-X (i-1)	[3] Y (i)	[4] Y (i+1)-Y (i-1)	[2] * [3]	[1] * [4]	方向角	夾角	距離
41-101	-149486.725	25.681	-40405.962	-26.987	-1037665.510122	4034198.247575	269-35-34	92-38-42	25.609
41-103K	-149486.907	-6.775	-40431.570	-25.528	273923.886750	3816101.761896	179-18-17	89-42-43	6.593
41-104K	-149493.500	-6.566	-40431.490	4.605	265473.163340	-688417.567500	89-39-29	90-21-12	4.525
41-30K	-149493.473	-31.723	-40426.965	4.916	1282464.610695	-734909.913268	179-17-40	269-38-11	31.752
41-15K	-149525.223	-29.448	-40426.574	5.723	1190481.751152	-855732.851229	66-38-55	67-21-15	5.808
41-111	-149522.921	8.439	-40421.242	19.429	-341114.861238	-2905080.832109	66-28-28	179-49-33	15.375
41-6	-149516.784	10.333	-40407.145	16.659	-417527.029285	-2490800.104656	31-24-27	144-55-59	4.916
41-5	-149512.588	30.059	-40404.583	1.183	-1214521.360397	-176873.391604	356-56-52	145-32-25	25.900
合計				倍面積 面積	1514.650895 757.32	-1514.650895 757.32			120.478

面積 (座標法) 計算書

地番 = 41-7  
測点名

	[1] X (i)	[2] X (i+1)-X (i-1)	[3] Y (i)	[4] Y (i+1)-Y (i-1)	[2] * [3]	[1] * [4]	方向角	夾角	距離
41-30K	-149493.473	31.741	-40426.965	-1.896	-1283192.296065	283439.624808	269-39-27	90-21-47	1.505
41-31	-149493.482	-32.396	-40428.470	-1.106	1309720.714120	165339.791092	179-17-39	89-38-12	32.389
41-16	-149525.869	-31.741	-40428.071	1.896	1283227.401611	-283501.047624	66-39-30	67-21-51	1.630
41-15K	-149525.223	32.396	-40426.574	1.106	-1309659.291304	-165374.896638	359-17-40	112-38-10	31.752
合計				倍面積 面積	96.528362 48.26	-96.528362 48.26			67.276

面積 (座標法) 計算書

地番 = 41-8

測点名	[1] X (i)	[2] X (i+1)-X (i-1)	[3] Y (i)	[4] Y (i+1)-Y (i-1)	[2] * [3]	[1] * [4]	方向角	夾角	距離
41-32	-149493.545	-18.768	-40439.043	-10.341	758959.959024	1545912.748845	179-17-22	89-37-51	18.706
41-33	-149512.250	-18.633	-40438.811	5.758	753496.365363	-860891.535500	89-15-13	89-57-51	5.526
41-51K	-149512.178	-15.777	-40433.285	5.762	637915.937445	-861489.169636	179-08-49	269-53-36	15.851
41-50	-149528.027	-13.691	-40433.049	5.214	553568.873859	-779639.132778	66-33-46	67-24-57	5.426
41-16	-149525.869	34.545	-40428.071	4.579	-1396587.712695	-684678.954151	359-17-39	112-43-53	32.389
41-31	-149493.482	32.324	-40428.470	-10.972	-1306809.864280	1640242.484504	269-39-31	90-21-52	10.573
合計					543.558716	-543.558716			88.471
				倍面積 面積	271.77	271.77			

面積 (座標法) 計算書

地番 = 41-9

測点名	[1] X (i)	[2] X (i+1)-X (i-1)	[3] Y (i)	[4] Y (i+1)-Y (i-1)	[2] * [3]	[1] * [4]	方向角	夾角	距離
41-50	-149528.027	17.650	-40433.049	3.901	-713643.314850	-583308.833327	359-08-49	112-40-20	15.851
41-51K	-149512.178	15.568	-40433.285	-21.847	-629465.380880	3266392.552766	269-15-18	90-06-29	21.613
41-47	-149512.459	-26.994	-40454.896	-21.474	1092039.462624	3210630.544566	179-42-22	90-27-04	26.713
41-44	-149539.172	-22.624	-40454.759	7.644	915248.467616	-1143077.430768	61-25-24	61-43-02	8.548
41-113	-149535.083	8.334	-40447.252	15.339	-337087.398168	-2293718.638137	61-32-31	180-07-07	8.908
41-7	-149530.838	5.255	-40439.420	10.066	-212509.152100	-1505177.415308	65-40-20	184-07-49	2.452
41-112	-149529.828	2.811	-40437.186	6.371	-113668.929846	-952654.534188	66-28-29	180-48-09	4.512
合計					913.754396	-913.754396			88.597
				倍面積 面積	456.87	456.87			

面積 (座標法) 計算書

地番 = 41-10

測点名	[1] X (i)	[2] X (i+1)-X (i-1)	[3] Y (i)	[4] Y (i+1)-Y (i-1)	[2] * [3]	[1] * [4]	方向角	夾角	距離
41-45	-149533.916	-8.559	-40466.176	-11.345	346350.000384	1696462.277020	179-41-44	90-09-48	8.466
41-9	-149542.382	-10.020	-40466.131	2.693	405470.632620	-402717.634726	120-24-25	120-42-41	3.070
41-8	-149543.936	3.210	-40463.483	11.372	-129887.780430	-1700613.640192	61-21-43	120-57-18	9.940
41-44	-149539.172	10.113	-40454.759	8.697	-409118.977767	-1300542.178884	359-42-39	118-20-56	5.349
41-49K	-149533.823	5.256	-40454.786	-11.417	-212630.355216	1707227.657191	269-31-56	89-49-17	11.390
合計					183.519591	-183.519591			38.215
				倍面積 面積	91.75	91.75			

面積 (座標法) 計算書

地番 = 41-11

測点名	[1] X (i)	[2] X (i+1)-X (i-1)	[3] Y (i)	[4] Y (i+1)-Y (i-1)	[2] * [3]	[1] * [4]	方向角	夾角	距離
41-45	-149533.916	-8.012	-40466.176	11.435	324215.002112	-1709920.329460	89-31-56	89-51-01	11.390
41-49K	-149533.823	8.193	-40454.786	11.348	-331446.061698	-1696909.823404	359-42-10	90-10-14	8.100
41-48K	-149525.723	8.012	-40454.828	-11.435	-324124.081936	1709826.642505	269-33-27	89-51-17	11.393
41-46	-149525.811	-8.193	-40466.221	-11.348	331539.748653	1696818.903228	179-40-55	90-07-28	8.105
合計					184.607131	-184.607131			38.988
				倍面積 面積	92.30	92.30			

面積 (座標法) 計算書

地番 = 41-12

測点名	[1] X (i)	[2] X (i+1)-X (i-1)	[3] Y (i)	[4] Y (i+1)-Y (i-1)	[2] * [3]	[1] * [4]	方向角	夾角	距離
41-46	-149525.811	-13.119	-40466.221	11.464	530876.353299	-1714163.897304	89-33-27	89-51-56	11.393
41-48K	-149525.723	13.352	-40454.828	11.325	-540152.863456	-1693378.812975	359-42-23	90-08-56	13.264
41-47	-149512.459	13.119	-40454.896	-11.464	-530727.780624	1714010.829976	269-16-16	89-33-53	11.397
41-21	-149512.604	-13.352	-40466.292	-11.325	540305.930784	1693230.240300	179-41-31	90-25-15	13.207
合計				倍面積 面積	301.640003 150.82	-301.640003 150.82			49.261

面積 (座標法) 計算書

地番 = 41-13

測点名	[1] X (i)	[2] X (i+1)-X (i-1)	[3] Y (i)	[4] Y (i+1)-Y (i-1)	[2] * [3]	[1] * [4]	方向角	夾角	距離
41-23	-149493.686	-19.059	-40466.398	-27.249	771249.079482	4073553.449814	179-40-44	89-58-27	18.918
41-21	-149512.604	-18.773	-40466.292	11.502	759673.699716	-1719693.971208	89-16-16	89-35-32	11.397
41-47	-149512.459	0.354	-40454.896	27.481	-14321.033184	-4108751.885779	89-15-20	179-59-04	16.086
41-33	-149512.250	18.914	-40438.811	15.853	-764859.671254	-2370217.699250	359-17-22	90-02-02	18.706
41-32	-149493.545	18.564	-40439.043	-27.587	-750710.394252	4124078.425915	269-42-17	90-24-55	27.355
合計				倍面積 面積	1031.680508 515.84	-1031.680508 515.84			92.462

面積 (座標法) 計算書

地番 = 41-14

測点名	[1] X (i)	[2] X (i+1)-X (i-1)	[3] Y (i)	[4] Y (i+1)-Y (i-1)	[2] * [3]	[1] * [4]	方向角	夾角	距離
41-106K	-149460.321	-8.588	-40448.779	-4.301	347374.114052	642828.840621	179-32-40	90-00-12	8.553
41-107K	-149468.874	-8.695	-40448.711	-17.753	351701.542145	2653520.920122	269-32-36	269-59-56	17.822
41-105K	-149469.016	-24.812	-40466.532	-17.687	1004055.591984	2643658.485992	179-41-20	90-08-44	24.670
41-23	-149493.686	-24.529	-40466.398	27.489	992600.276542	-4109431.934454	89-42-17	90-00-57	27.355
41-32	-149493.545	0.186	-40439.043	34.908	-7521.661998	-5218520.668860	89-39-31	179-57-14	7.553
41-104K	-149493.500	33.346	-40431.490	7.149	-1348228.465540	-1068729.031500	359-18-18	89-38-47	33.303
41-115	-149460.199	33.214	-40431.894	-12.920	-1342904.927316	1931025.771080	269-36-06	90-17-48	12.516
41-25	-149460.286	-0.122	-40444.410	-16.885	4934.218020	2523636.929110	269-32-28	179-56-22	4.369
合計				倍面積 面積	2010.687889 1005.34	-2010.687889 1005.34			136.141

面積 (座標法) 計算書

地番 = 41-15

測点名	[1] X (i)	[2] X (i+1)-X (i-1)	[3] Y (i)	[4] Y (i+1)-Y (i-1)	[2] * [3]	[1] * [4]	方向角	夾角	距離
41-107K	-149468.874	8.695	-40448.711	17.753	-351701.542145	-2653520.920122	359-32-40	90-00-04	8.553
41-106K	-149460.321	8.410	-40448.779	-17.867	-340174.231390	2670407.555307	269-32-23	89-59-43	17.800
41-24	-149460.464	-8.695	-40466.578	-17.753	351856.895710	2653371.617392	179-41-31	90-09-08	8.552
41-105K	-149469.016	-8.410	-40466.532	17.867	340323.534120	-2670562.908872	89-32-36	89-51-05	17.822
合計				倍面積 面積	304.656295 152.32	-304.656295 152.32			52.727