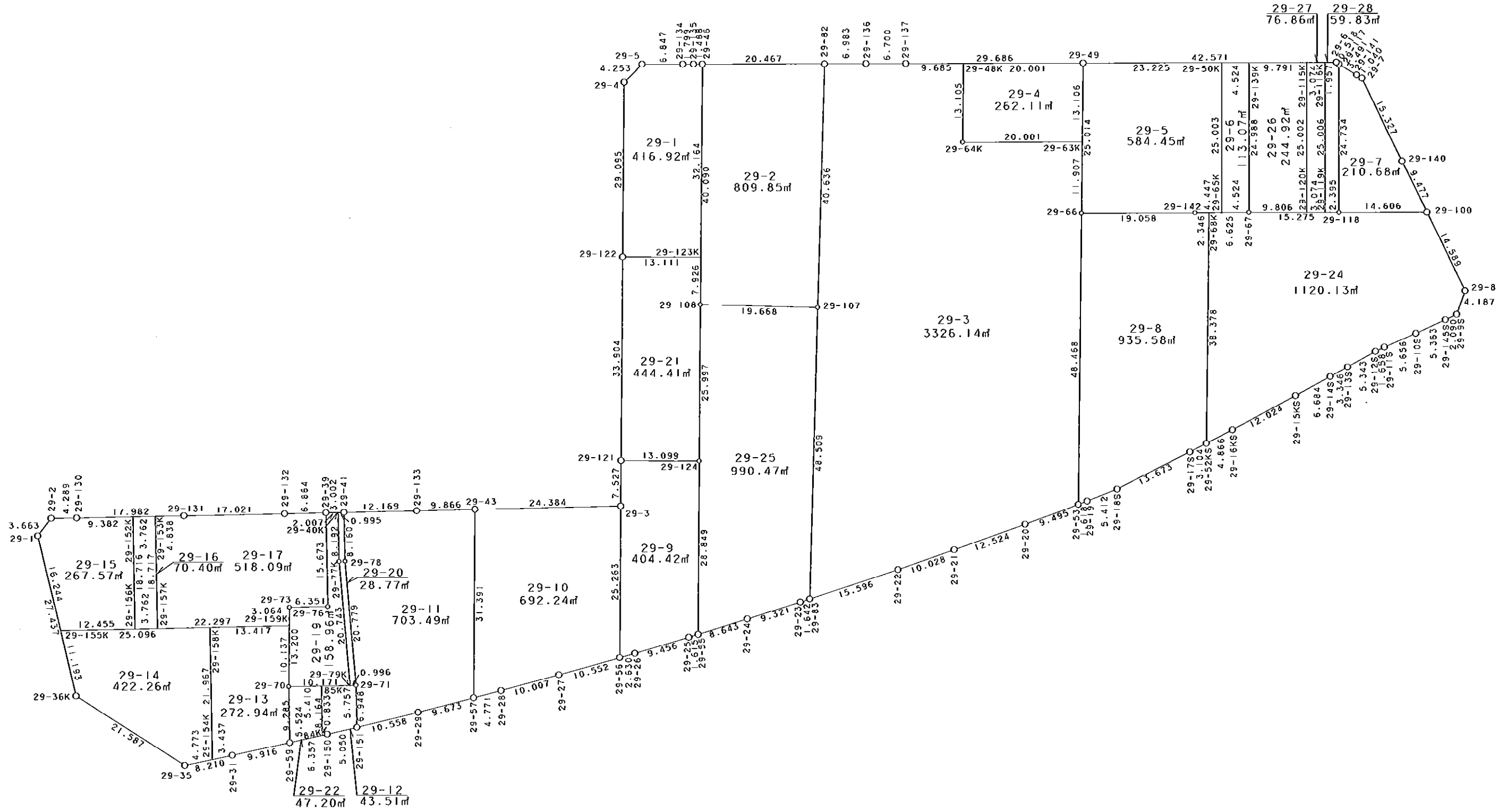


29街区



S = 1 / 700



凡 例

記号	名称
⊙	地区界点
○	街区点
○	画地点 (折れ点)
┆	画地点 (直線中)

面積 (座標法) 計算書

地番 = 29街区

測点名	[1] X (i)	[2] X (i+1)-X (i-1)	[3] Y (i)	[4] Y (i+1)-Y (i-1)	[2] * [3]	[1] * [4]	方向角	夾角	距離
29-5	-149646.518	-3.505	-40854.143	-9.688	143193.771215	1449775.466384	222-04-28	134-59-16	4.253
29-4	-149649.675	-32.225	-40856.993	-1.608	1316616.599425	240636.677400	177-33-12	135-28-44	29.095
29-122	-149678.743	-62.941	-40855.751	2.701	2571501.823691	-404282.284843	177-32-01	179-58-49	33.904
29-121	-149712.616	-41.393	-40854.292	1.783	1691081.708756	-266937.594328	177-31-59	179-59-58	7.527
29-3	-149720.136	-9.255	-40853.968	-23.998	378103.473840	3592983.823728	265-55-11	268-23-12	24.384
29-43	-149721.871	-2.461	-40878.290	-34.161	100601.471690	5114648.835231	265-46-48	179-51-37	9.866
29-133	-149722.597	-1.584	-40888.129	-21.978	64766.796336	3290603.236866	265-57-25	180-10-37	12.169
29-41	-149723.455	-1.079	-40900.268	-15.133	44131.389172	2265765.044515	265-46-42	179-49-17	3.002
29-39	-149723.676	-0.741	-40903.262	-9.838	30309.317142	1472981.524488	265-39-18	179-52-36	6.864
29-132	-149724.196	-1.715	-40910.106	-23.823	70160.831790	3566879.521308	265-58-27	180-19-09	17.021
29-131	-149725.391	-2.479	-40927.085	-34.915	101458.243715	5227662.026765	265-54-19	179-55-52	17.982
29-130	-149726.675	-1.570	-40945.021	-22.215	64283.682970	3326178.085125	266-10-34	180-16-15	4.289
29-2	-149726.961	-3.310	-40949.300	-6.347	135542.183000	950317.021467	214-22-00	128-11-26	3.663
29-1	-149729.985	-29.331	-40951.368	5.726	1201144.574808	-857353.894110	163-29-49	129-07-49	27.437
29-36K	-149756.292	-36.916	-40943.574	26.594	1511472.977784	-3982618.829448	119-26-11	135-56-22	21.587
29-35	-149766.901	-8.517	-40924.774	26.739	348556.300158	-4004617.165839	75-14-15	135-48-04	8.210
29-31	-149764.809	4.692	-40916.835	17.508	-191981.789820	-2622082.275972	74-47-57	179-33-42	9.916
29-59	-149762.209	4.319	-40907.266	15.689	-176678.481854	-2349619.297001	74-18-39	179-30-42	6.357
29-150	-149760.490	3.108	-40901.146	10.975	-127120.761768	-1643621.377750	74-02-04	179-43-25	5.050
29-151	-149759.101	4.405	-40896.291	14.973	-180148.161855	-2242343.019273	73-24-06	179-22-02	10.558
29-29	-149756.085	5.868	-40886.173	19.361	-239920.063164	-2899427.561685	72-51-07	179-27-01	9.673
29-57	-149753.233	4.265	-40876.930	13.800	-174340.106450	-2066594.615400	72-46-22	179-55-15	4.771
29-28	-149751.820	4.501	-40872.373	14.076	-183966.550873	-2107906.618320	72-01-36	179-15-14	10.007
29-27	-149748.732	6.446	-40862.854	19.522	-263401.956884	-2923394.746104	71-26-35	179-24-59	10.552
29-56	-149745.374	4.196	-40852.851	12.496	-171418.562796	-1871218.193504	71-25-13	179-58-38	2.630
29-26	-149744.536	3.973	-40850.358	11.414	-162298.472334	-1709184.133904	70-38-15	179-13-02	9.456
29-25	-149741.401	3.683	-40841.437	10.440	-150419.012471	-1563300.226440	70-09-45	179-31-30	1.615
29-55	-149740.853	3.489	-40839.918	9.646	-142490.473902	-1444400.268038	70-06-21	179-56-36	8.643
29-24	-149737.912	6.185	-40831.791	16.865	-252544.627335	-2525329.885880	69-37-57	179-31-36	9.321
29-23	-149734.668	3.835	-40823.053	10.270	-156556.408255	-1537775.040360	68-54-18	179-16-21	1.642
29-83	-149734.077	6.218	-40821.521	16.078	-253828.217578	-2407424.490006	68-51-05	179-56-47	15.596
29-22	-149728.450	9.377	-40806.975	23.846	-382647.004575	-3570424.618700	68-02-22	179-11-17	10.028
29-21	-149724.700	8.582	-40797.675	20.854	-350125.646850	-3122358.893800	67-18-17	179-15-55	12.524
29-20	-149719.868	8.556	-40786.121	20.288	-348966.051276	-3037516.681984	66-54-27	179-36-10	9.495
29-53	-149716.144	4.361	-40777.387	10.221	-177830.184707	-1530248.707824	66-48-39	179-54-12	1.618
29-19	-149715.507	2.846	-40775.900	6.428	-116048.211400	-962371.278996	65-54-42	179-06-03	5.412
29-18S	-149713.298	8.994	-40770.959	16.812	-366694.005246	-2516979.965976	60-14-58	174-20-16	13.673
29-17S	-149706.513	8.346	-40759.088	14.554	-340175.348448	-2178828.590202	59-48-31	179-33-33	3.104
29-52KS	-149704.952	4.007	-40756.405	6.890	-163310.914835	-1031467.119280	59-49-33	180-01-02	4.866
29-16KS	-149702.506	8.599	-40752.198	14.537	-350428.150602	-2176225.329722	59-13-12	179-23-39	12.024
29-15KS	-149696.353	9.633	-40741.868	16.037	-392466.414444	-2400680.413061	58-37-34	179-24-22	6.684
29-14S	-149692.873	5.236	-40736.161	8.555	-213294.538996	-1280622.528515	58-20-35	179-43-01	3.346
29-13S	-149691.117	4.572	-40733.313	7.389	-186232.707036	-1106067.663513	58-11-45	179-51-10	5.343
29-12S	-149688.301	3.586	-40728.772	6.009	-146053.376392	-899477.000709	62-19-19	184-07-34	1.658
29-11S	-149687.531	3.328	-40727.304	6.512	-135540.467712	-974765.201872	63-06-31	180-47-12	5.656
29-10S	-149684.973	5.025	-40722.260	9.806	-204629.356500	-1467810.845238	62-36-47	179-30-16	5.363
29-145S	-149682.506	3.447	-40717.498	6.608	-140353.215606	-989101.999648	62-02-14	179-25-27	2.090
29-9S	-149681.526	4.987	-40715.652	3.060	-203048.956524	-458025.469560	16-51-19	134-49-05	4.187
29-8	-149677.519	16.806	-40714.438	-5.787	-684246.845028	866183.802453	331-19-17	134-27-58	14.589
29-100	-149664.720	21.111	-40721.439	-11.554	-859670.298729	1729226.174880	331-17-16	179-57-59	9.477
29-140	-149656.408	21.765	-40725.992	-11.896	-886401.215880	1780312.629568	331-22-23	180-05-07	15.327
29-7	-149642.955	13.940	-40733.335	-8.262	-567822.689900	1236350.094210	297-55-13	146-32-50	1.040
29-141	-149642.468	2.186	-40734.254	-3.969	-89045.079244	593930.955492	299-07-12	181-11-59	3.491
29-117	-149640.769	1.952	-40737.304	-3.502	-79519.217408	524041.973038	299-14-14	180-07-02	0.518
29-6	-149640.516	-1.950	-40737.756	-42.966	79438.624200	6429454.410456	267-02-01	147-47-47	42.571

地番	筆種別	面積	坪数
29-1	筆界	416.92	126.11
29-2	筆界	809.85	244.98
29-3	筆界	3326.14	1006.15
29-4	筆界	262.11	79.29
29-5	筆界	584.45	176.79
29-6	筆界	113.07	34.20
29-7	筆界	210.68	63.73
29-8	筆界	935.58	283.01
29-9	筆界	404.42	122.33
29-10	筆界	692.24	209.40
29-11	筆界	703.49	212.80
29-12	筆界	43.51	13.16
29-13	筆界	272.94	82.56
29-14	筆界	422.26	127.73
29-15	筆界	267.57	80.94
29-16	筆界	70.40	21.29
29-17	筆界	518.09	156.72
29-19	筆界	158.96	48.08
29-20	筆界	28.77	8.70
29-21	筆界	444.41	134.43
29-22	筆界	47.20	14.27
29-24	筆界	1120.13	338.84
29-25	筆界	990.47	299.61
29-26	筆界	244.92	74.08
29-27	筆界	76.86	23.25
29-28	筆界	59.83	18.09
	合計	13225.27	4000.54

面積 (座標法) 計算書

測点名	[1] X (i)	[2] X (i+1) - X (i-1)	[3] Y (i)	[4] Y (i+1) - Y (i-1)	[2] * [3]	[1] * [4]	方向角	夾 角	距 離
29-49	-149642.719	-3.727	-40780.270	-72.161	151988.066290	10798368.245759	267-03-26	180-01-25	29.686
29-137	-149644.243	-1.858	-40809.917	-36.339	75824.825786	5437922.146377	267-08-34	180-05-08	6.700
29-136	-149644.577	-0.713	-40816.609	-13.665	29102.242217	2044893.144705	266-53-20	179-44-46	6.983
29-82	-149644.956	-1.429	-40823.582	-27.413	58336.898678	4102217.178828	267-03-34	180-10-14	20.467
29-46	-149646.006	-1.113	-40844.022	-21.927	45459.396486	3281287.973562	267-34-26	180-30-52	1.488
29-135	-149646.069	-0.164	-40845.509	-3.283	6698.663476	491288.044527	266-46-53	179-12-27	1.799
29-134	-149646.170	-0.449	-40847.305	-8.634	18340.439945	1292045.031780	267-05-12	180-18-19	6.847
合計				倍面積 面積	26450.757893 13225.37	-26450.757893 13225.37			615.094

面積 (座標法) 計算書

地番 = 29-1
測点名

	[1] X (i)	[2] X (i+1)-X (i-1)	[3] Y (i)	[4] Y (i+1)-Y (i-1)	[2] * [3]	[1] * [4]	方向角	夾 角	距 離
29-5	-149646.518	-3.505	-40854.143	-9.688	143193.771215	1449775.466384	222-04-28	134-59-16	4.253
29-4	-149649.675	-32.225	-40856.993	-1.608	1316616.599425	240636.677400	177-33-12	135-28-44	29.095
29-122	-149678.743	-28.466	-40855.751	14.339	1162999.807966	-2146243.495877	87-22-06	89-48-54	13.111
29-123K	-149678.141	32.737	-40842.654	11.729	-1337065.963998	-1755574.915789	357-33-45	90-11-39	32.164
29-46	-149646.006	32.072	-40844.022	-2.855	-1309949.473584	427239.347130	267-34-26	90-00-41	1.488
29-135	-149646.069	-0.164	-40845.509	-3.283	6698.663476	491288.044527	266-46-53	179-12-27	1.799
29-134	-149646.170	-0.449	-40847.305	-8.634	18340.439945	1292045.031780	267-05-12	180-18-19	6.847
合計				倍面積 面積	833.844445 416.92	-833.844445 416.92			88.757

面積 (座標法) 計算書

地番 = 29-2
測点名

	[1] X (i)	[2] X (i+1)-X (i-1)	[3] Y (i)	[4] Y (i+1)-Y (i-1)	[2] * [3]	[1] * [4]	方向角	夾 角	距 離
29-46	-149646.006	-41.104	-40844.022	-18.735	1678852.680288	2803617.922410	177-33-45	90-30-11	40.090
29-108	-149686.060	-39.575	-40842.317	21.367	1616334.695275	-3198342.044020	88-36-16	91-02-31	19.668
29-107	-149685.581	41.104	-40822.655	18.735	-1677974.411120	-2804359.360035	358-41-34	90-05-18	40.636
29-82	-149644.956	39.575	-40823.582	-21.367	-1615593.257650	3197463.774852	267-03-34	88-22-00	20.467
合計				倍面積 面積	1619.706793 809.85	-1619.706793 809.85			120.861

面積 (座標法) 計算書

地番 = 29-3
測点名

	[1] X (i)	[2] X (i+1)-X (i-1)	[3] Y (i)	[4] Y (i+1)-Y (i-1)	[2] * [3]	[1] * [4]	方向角	夾 角	距 離
29-82	-149644.956	-41.004	-40823.582	-6.046	1673930.156328	904753.403976	178-41-34	91-48-14	40.636
29-107	-149685.581	-89.121	-40822.655	2.061	3638155.836255	-308501.982441	178-39-38	179-58-04	48.509
29-83	-149734.077	-42.869	-40821.521	15.680	1749977.783749	-2347830.327360	68-51-05	70-11-27	15.596
29-22	-149728.450	9.377	-40806.975	23.846	-382647.004575	-3570424.618700	68-02-22	179-11-17	10.028
29-21	-149724.700	8.582	-40797.675	20.854	-350125.646850	-3122358.893800	67-18-17	179-15-55	12.524
29-20	-149719.868	8.556	-40786.121	20.288	-348966.051276	-3037516.681984	66-54-27	179-36-10	9.495
29-53	-149716.144	52.155	-40777.387	6.849	-2126744.618985	-1025405.870256	357-46-16	110-51-49	48.468
29-66	-149667.713	60.329	-40779.272	-2.360	-2460172.700488	353215.802680	357-42-50	179-56-34	11.907
29-63K	-149655.815	10.872	-40779.747	-20.450	-443357.409384	3060461.416750	267-03-35	89-20-45	20.001
29-64K	-149656.841	12.069	-40799.722	-20.498	-492411.844818	3067665.926818	357-42-46	270-39-11	13.105
29-48K	-149643.746	12.598	-40800.245	-10.195	-514001.486510	1525617.990470	267-03-30	89-20-44	9.685
29-137	-149644.243	-0.831	-40809.917	-16.364	33913.041027	2448778.392452	267-08-34	180-05-04	6.700
29-136	-149644.577	-0.713	-40816.609	-13.665	29102.242217	2044893.144705	266-53-20	179-44-46	6.983
合計				倍面積 面積	6652.296690 3326.14	-6652.296690 3326.14			253.637

面積 (座標法) 計算書

地番 = 29-4
測点名

	[1] X (i)	[2] X (i+1)-X (i-1)	[3] Y (i)	[4] Y (i+1)-Y (i-1)	[2] * [3]	[1] * [4]	方向角	夾角	距離
29-63K	-149655.815	14.122	-40779.747	19.452	-575891.587134	-2911104.913380	357-42-47	90-39-12	13.106
29-49	-149642.719	12.069	-40780.270	-20.498	-492177.078630	3067376.454062	267-03-24	89-20-37	20.001
29-48K	-149643.746	-14.122	-40800.245	-19.452	576181.059890	2910870.147192	177-42-46	90-39-22	13.105
29-64K	-149656.841	-12.069	-40799.722	20.498	492411.844818	-3067665.926818	87-03-35	89-20-49	20.001
合計				倍面積 面積	524.238944 262.11	-524.238944 262.11			66.213

面積 (座標法) 計算書

地番 = 29-5
測点名

	[1] X (i)	[2] X (i+1)-X (i-1)	[3] Y (i)	[4] Y (i+1)-Y (i-1)	[2] * [3]	[1] * [4]	方向角	夾角	距離
29-50K	-149641.517	23.768	-40757.076	-24.471	-968714.182368	3661877.562507	267-02-00	89-57-39	23.225
29-49	-149642.719	-26.196	-40780.270	-22.196	1068279.952920	3321469.790924	177-42-48	90-40-48	25.014
29-66	-149667.713	-24.013	-40779.272	20.031	979232.658536	-2997993.959103	87-02-58	89-20-10	19.058
29-142	-149666.732	1.226	-40760.239	23.473	-49972.053014	-3513127.200236	86-50-30	179-47-32	4.447
29-65K	-149666.487	25.215	-40755.799	3.163	-1027657.471785	-473395.098381	357-04-21	90-13-51	25.003
合計				倍面積 面積	1168.904289 584.45	-1168.904289 584.45			96.747

面積 (座標法) 計算書

地番 = 29-6
測点名

	[1] X (i)	[2] X (i+1)-X (i-1)	[3] Y (i)	[4] Y (i+1)-Y (i-1)	[2] * [3]	[1] * [4]	方向角	夾角	距離
29-65K	-149666.487	-24.721	-40755.799	5.794	1007524.107079	-867167.625678	86-50-41	89-46-20	4.524
29-67	-149666.238	25.204	-40751.282	3.241	-1027095.311528	-485068.277358	357-04-22	90-13-41	24.988
29-139K	-149641.283	24.721	-40752.558	-5.794	-1007443.986318	867021.593702	267-02-06	89-57-44	4.524
29-50K	-149641.517	-25.204	-40757.076	-3.241	1027241.343504	484988.156597	177-04-21	90-02-15	25.003
合計				倍面積 面積	226.152737 113.07	-226.152737 113.07			59.039

面積 (座標法) 計算書

地番 = 29-7
測点名

	[1] X (i)	[2] X (i+1)-X (i-1)	[3] Y (i)	[4] Y (i+1)-Y (i-1)	[2] * [3]	[1] * [4]	方向角	夾角	距離
29-117	-149640.769	-23.002	-40737.304	-1.772	937039.466608	265163.442668	177-02-18	57-55-06	24.734
29-118	-149665.470	-23.951	-40736.026	15.865	975668.558726	-2374442.681550	87-03-24	90-01-06	14.606
29-100	-149664.720	9.062	-40721.439	10.034	-369017.680218	-1501735.800480	331-17-16	64-13-52	9.477
29-140	-149656.408	21.765	-40725.992	-11.896	-886401.215880	1780312.629568	331-22-23	180-05-07	15.327
29-7	-149642.955	13.940	-40733.335	-8.262	-567822.689900	1236350.094210	297-55-13	146-32-50	1.040
29-141	-149642.468	2.186	-40734.254	-3.969	-89045.079244	593930.955492	299-07-12	181-11-59	3.491
合計				倍面積 面積	421.360092 210.68	-421.360092 210.68			68.675

面積 (座標法) 計算書

地番 = 29-8
測点名

	[1] X (i)	[2] X (i+1)-X (i-1)	[3] Y (i)	[4] Y (i+1)-Y (i-1)	[2] * [3]	[1] * [4]	方向角	夾角	距離
29-68K	-149666.603	38.220	-40757.897	-3.834	-1557766.823340	573821.755902	266-50-50	89-04-31	2.346
29-142	-149666.732	-1.110	-40760.239	-21.375	45243.865290	3199126.396500	267-02-58	180-12-08	19.058
29-66	-149667.713	-49.412	-40779.272	-17.148	2014985.388064	2566501.942524	177-46-16	90-43-18	48.468
29-53	-149716.144	-47.794	-40777.387	3.372	1948914.434278	-504842.837568	66-48-39	69-02-23	1.618
29-19	-149715.507	2.846	-40775.900	6.428	-116048.211400	-962371.278996	65-54-42	179-06-03	5.412
29-18S	-149713.298	8.994	-40770.959	16.812	-366694.005246	-2516979.965976	60-14-58	174-20-16	13.673
29-17S	-149706.513	8.346	-40759.088	14.554	-340175.348448	-2178828.590202	59-48-31	179-33-33	3.104
29-52KS	-149704.952	39.910	-40756.405	1.191	-1626588.123550	-178298.597832	357-46-19	117-57-48	38.378
合計				倍面積 面積	1871.175648 935.58	-1871.175648 935.58			132.057

面積 (座標法) 計算書

地番 = 29-9
測点名

	[1] X (i)	[2] X (i+1)-X (i-1)	[3] Y (i)	[4] Y (i+1)-Y (i-1)	[2] * [3]	[1] * [4]	方向角	夾角	距離
29-121	-149712.616	-8.103	-40854.292	-12.762	331042.328076	1910632.405392	177-31-59	90-05-02	7.527
29-3	-149720.136	-32.758	-40853.968	1.441	1338294.283744	-215746.715976	177-27-57	179-55-58	25.263
29-56	-149745.374	-24.400	-40852.851	3.610	996809.564400	-540580.800140	71-25-13	73-57-16	2.630
29-26	-149744.536	3.973	-40850.358	11.414	-162298.472334	-1709184.133904	70-38-15	179-13-02	9.456
29-25	-149741.401	3.683	-40841.437	10.440	-150419.012471	-1563300.226440	70-09-45	179-31-30	1.615
29-55	-149740.853	29.368	-40839.918	0.231	-1199386.711824	-34590.137043	357-26-28	107-16-43	28.849
29-124	-149712.033	28.237	-40841.206	-14.374	-1153233.133822	2151960.762342	267-26-57	90-00-29	13.099
合計				倍面積 面積	808.845769 404.42	-808.845769 404.42			88.439

面積 (座標法) 計算書

地番 = 29-10
測点名

	[1] X (i)	[2] X (i+1)-X (i-1)	[3] Y (i)	[4] Y (i+1)-Y (i-1)	[2] * [3]	[1] * [4]	方向角	夾角	距離
29-43	-149721.871	-33.097	-40878.290	-22.962	1352948.764130	3437913.601902	177-31-01	91-35-50	31.391
29-57	-149753.233	-29.949	-40876.930	5.917	1224223.176570	-886089.879661	72-46-22	75-15-21	4.771
29-28	-149751.820	4.501	-40872.373	14.076	-183966.550873	-2107906.618320	72-01-36	179-15-14	10.007
29-27	-149748.732	6.446	-40862.854	19.522	-263401.956884	-2923394.746104	71-26-35	179-24-59	10.552
29-56	-149745.374	28.596	-40852.851	8.886	-1168228.127196	-1330637.393364	357-27-57	106-01-22	25.263
29-3	-149720.136	23.503	-40853.968	-25.439	-960190.809904	3808730.539704	265-55-11	88-27-14	24.384
合計				倍面積 面積	1384.495843 692.24	-1384.495843 692.24			106.368

面積 (座標法) 計算書

地番 = 29-11
測点名

	[1] X (i)	[2] X (i+1)-X (i-1)	[3] Y (i)	[4] Y (i+1)-Y (i-1)	[2] * [3]	[1] * [4]	方向角	夾角	距離
29-41	-149723.455	-8.997	-40900.268	-11.552	367979.711196	1729605.352160	175-52-30	89-55-05	8.160
29-78	-149731.594	-28.715	-40899.681	3.485	1174434.339915	-521814.605090	171-58-59	176-06-29	20.779
29-71	-149752.170	-27.507	-40896.783	3.390	1124947.809981	-507659.856300	175-56-23	183-57-24	6.948
29-151	-149759.101	-3.915	-40896.291	10.610	160108.979265	-1588944.061610	73-24-06	77-27-43	10.558
29-29	-149756.085	5.868	-40886.173	19.361	-239920.063164	-2899427.561685	72-51-07	179-27-01	9.673
29-57	-149753.233	34.214	-40876.930	7.883	-1398563.283020	-1180504.735739	357-31-01	104-39-54	31.391
29-43	-149721.871	30.636	-40878.290	-11.199	-1252347.292440	1676735.233329	265-46-48	88-15-47	9.866
29-133	-149722.597	-1.584	-40888.129	-21.978	64766.796336	3290603.236866	265-57-25	180-10-37	12.169
合計				倍面積 面積	1406.998069 703.49	-1406.998069 703.49			109.544

面積 (座標法) 計算書

地番 = 29-12
測点名

	[1] X (i)	[2] X (i+1)-X (i-1)	[3] Y (i)	[4] Y (i+1)-Y (i-1)	[2] * [3]	[1] * [4]	方向角	夾角	距離
29-84K	-149760.715	-7.919	-40901.948	1.380	323902.526212	-206669.786700	74-19-43	78-23-18	0.833
29-150	-149760.490	1.614	-40901.146	5.657	-66014.449644	-847195.091930	74-02-04	179-42-21	5.050
29-151	-149759.101	8.320	-40896.291	4.363	-340257.141120	-653398.957663	355-56-23	101-54-19	6.948
29-71	-149752.170	6.530	-40896.783	-6.235	-267055.992990	933704.779950	266-00-21	90-03-58	5.757
29-85K	-149752.571	-8.545	-40902.526	-5.165	349512.084670	773472.029215	175-56-25	89-56-04	8.164
合計				倍面積 面積	87.027128 43.51	-87.027128 43.51			26.752

面積 (座標法) 計算書

地番 = 29-13
測点名

	[1] X (i)	[2] X (i+1)-X (i-1)	[3] Y (i)	[4] Y (i+1)-Y (i-1)	[2] * [3]	[1] * [4]	方向角	夾角	距離
29-154K	-149765.685	-21.035	-40920.158	4.887	860755.523530	-731904.902595	75-13-55	79-18-53	3.437
29-31	-149764.809	3.476	-40916.835	12.892	-142226.918460	-1930767.917628	74-47-57	179-34-02	9.916
29-59	-149762.209	11.862	-40907.266	8.912	-485241.989292	-1334680.806608	355-56-33	101-08-36	9.285
29-70	-149752.947	19.390	-40907.923	-1.073	-793204.626970	160684.912131	357-38-53	181-42-20	10.137
29-159K	-149742.819	9.173	-40908.339	-13.799	-375252.193647	2066301.159381	265-55-06	88-16-13	13.417
29-158K	-149743.774	-22.866	-40921.722	-11.819	935716.095252	1769821.664906	175-55-02	89-59-56	21.967
合計				倍面積 面積	545.890413 272.94	-545.890413 272.94			68.159

面積 (座標法) 計算書

地番 = 29-14
測点名

	[1] X (i)	[2] X (i+1)-X (i-1)	[3] Y (i)	[4] Y (i+1)-Y (i-1)	[2] * [3]	[1] * [4]	方向角	夾角	距離
29-158K	-149743.774	20.125	-40921.722	-26.596	-823549.655250	3982585.413304	265-55-08	90-00-06	25.096
29-155K	-149745.560	-12.518	-40946.754	-21.852	512571.466572	3272239.977120	163-29-42	77-34-34	11.193
29-36K	-149756.292	-21.341	-40943.574	21.980	873776.812734	-3291643.298160	119-26-11	135-56-29	21.587
29-35	-149766.901	-9.393	-40924.774	23.416	384406.402182	-3506941.753816	75-14-30	135-48-19	4.773
29-154K	-149765.685	23.127	-40920.158	3.052	-946360.494066	-457084.870620	355-55-02	100-40-32	21.967
合計				倍面積 面積	844.532172 422.26	-844.532172 422.26			84.616

面積 (座標法) 計算書

地番 = 29-15
測点名

	[1] X (i)	[2] X (i+1)-X (i-1)	[3] Y (i)	[4] Y (i+1)-Y (i-1)	[2] * [3]	[1] * [4]	方向角	夾角	距離
29-152K	-149726.005	17.999	-40935.663	-10.690	-736800.998337	1600570.993450	265-54-17	89-59-09	9.382
29-130	-149726.675	-0.956	-40945.021	-13.637	39143.440076	2041822.666975	266-10-34	180-16-17	4.289
29-2	-149726.961	-3.310	-40949.300	-6.347	135542.183000	950317.021467	214-22-00	128-11-26	3.663
29-1	-149729.985	-18.599	-40951.368	2.546	761654.493432	-381212.541810	163-29-54	129-07-54	16.244
29-155K	-149745.560	-14.689	-40946.754	17.037	601466.869506	-2551215.105720	85-55-14	102-25-20	12.455
29-156K	-149744.674	19.555	-40934.331	11.091	-800470.842705	-1660818.179334	355-55-08	89-59-54	18.716
合計				倍面積 面積	535.144972 267.57	-535.144972 267.57			64.749

面積 (座標法) 計算書

地番 = 29-16
測点名

	[1] X (i)	[2] X (i+1)-X (i-1)	[3] Y (i)	[4] Y (i+1)-Y (i-1)	[2] * [3]	[1] * [4]	方向角	夾角	距離
29-153K	-149725.736	18.401	-40931.911	-5.084	-753188.094311	761205.641824	265-53-57	89-58-48	3.762
29-152K	-149726.005	-18.938	-40935.663	-2.420	775239.585894	362336.932100	175-55-08	90-01-11	18.716
29-156K	-149744.674	-18.401	-40934.331	5.084	753232.624731	-761301.922616	85-54-52	89-59-44	3.762
29-157K	-149744.406	18.938	-40930.579	2.420	-775143.305102	-362381.462520	355-55-09	90-00-17	18.717
合計				倍面積 面積	140.811212 70.40	-140.811212 70.40			44.957

面積 (座標法) 計算書

地番 = 29-17
測点名

	[1] X (i)	[2] X (i+1)-X (i-1)	[3] Y (i)	[4] Y (i+1)-Y (i-1)	[2] * [3]	[1] * [4]	方向角	夾角	距離
29-157K	-149744.406	-17.083	-40930.579	23.572	699217.081057	-3529775.138232	85-55-06	89-59-57	22.297
29-159K	-149742.819	4.648	-40908.339	22.114	-190141.959672	-3311412.699366	357-38-34	91-43-28	3.064
29-73	-149739.758	3.511	-40908.465	6.209	-143629.620615	-929734.157422	85-56-13	268-17-39	6.351
29-76	-149739.308	16.082	-40902.130	5.203	-657788.054660	-779093.619524	355-51-29	89-55-16	15.673
29-39	-149723.676	15.112	-40903.262	-7.976	-618130.095344	1194196.039776	265-39-18	89-47-49	6.864
29-132	-149724.196	-1.715	-40910.106	-23.823	70160.831790	3566879.521308	265-58-27	180-19-09	17.021
29-131	-149725.391	-1.540	-40927.085	-21.805	63027.710900	3264762.150755	265-54-40	179-56-13	4.838
29-153K	-149725.736	-19.015	-40931.911	-3.494	778320.287665	523141.721584	175-55-09	90-00-29	18.717
合計				倍面積 面積	1036.181121 518.09	-1036.181121 518.09			94.825

面積 (座標法) 計算書

地番 = 29-19
測点名

	[1] X (i)	[2] X (i+1)-X (i-1)	[3] Y (i)	[4] Y (i+1)-Y (i-1)	[2] * [3]	[1] * [4]	方向角	夾角	距離
29-39	-149723.676	-15.780	-40903.262	-0.870	645453.474360	130259.598120	175-51-29	90-05-10	15.673
29-76	-149739.308	-16.082	-40902.130	-5.203	657788.054660	779093.619524	265-56-13	270-04-44	6.351
29-73	-149739.758	-13.639	-40908.465	-5.793	557950.554135	867442.418094	177-38-48	91-42-35	13.200
29-70	-149752.947	-12.481	-40907.923	10.688	510571.786963	-1600559.497536	86-00-30	88-21-42	10.171
29-79K	-149752.239	21.248	-40897.777	7.252	-868995.965696	-1086003.237228	351-58-48	85-58-18	20.743
29-77K	-149731.699	28.711	-40900.671	-3.483	-1174299.165081	521515.507617	355-52-37	183-53-49	8.192
29-40K	-149723.528	8.023	-40901.260	-2.591	-328150.808980	387933.661048	265-46-19	89-53-42	2.007
合計				倍面積 面積	317.930361 158.96	-317.930361 158.96			76.337

面積 (座標法) 計算書

地番 = 29-20
測点名

	[1] X (i)	[2] X (i+1)-X (i-1)	[3] Y (i)	[4] Y (i+1)-Y (i-1)	[2] * [3]	[1] * [4]	方向角	夾角	距離
29-40K	-149723.528	-8.244	-40901.260	-0.403	337189.987440	60338.581784	175-52-37	90-05-08	8.192
29-77K	-149731.699	-28.711	-40900.671	3.483	1174299.165081	-521515.507617	171-58-48	176-06-11	20.743
29-79K	-149752.239	-20.471	-40897.777	3.888	837218.392967	-582236.705232	86-01-45	94-02-57	0.996
29-71	-149752.170	20.645	-40896.783	-1.904	-844314.085035	285128.131680	351-58-59	85-57-14	20.779
29-78	-149731.594	28.715	-40899.681	-3.485	-1174434.339915	521814.605090	355-52-30	183-53-31	8.160
29-41	-149723.455	8.066	-40900.268	-1.579	-329901.561688	236413.335445	265-47-29	89-54-59	0.995
合計				倍面積 面積	57.558850 28.77	-57.558850 28.77			59.865

面積 (座標法) 計算書

地番 = 29-21

測点名	[1] X (i)	[2] X (i+1)-X (i-1)	[3] Y (i)	[4] Y (i+1)-Y (i-1)	[2] * [3]	[1] * [4]	方向角	夾角	距離
29-122	-149678.743	-34.475	-40855.751	-11.638	1408502.015725	1741961.211034	177-32-01	90-09-55	33.904
29-121	-149712.616	-33.290	-40854.292	14.545	1360039.380680	-2177569.999720	87-26-57	89-54-56	13.099
29-124	-149712.033	26.556	-40841.206	11.975	-1084579.066536	-1792801.595175	357-33-02	90-06-05	25.997
29-108	-149686.060	33.892	-40842.317	-1.448	-1384227.807764	216745.414880	357-33-48	180-00-46	7.926
29-123K	-149678.141	7.317	-40842.654	-13.434	-298845.699318	2010776.146194	267-22-06	89-48-18	13.111
合計				倍面積 面積	888.822787 444.41	-888.822787 444.41			94.037

面積 (座標法) 計算書

地番 = 29-22

測点名	[1] X (i)	[2] X (i+1)-X (i-1)	[3] Y (i)	[4] Y (i+1)-Y (i-1)	[2] * [3]	[1] * [4]	方向角	夾角	距離
29-85K	-149752.571	7.768	-40902.526	-5.975	-317730.821968	894771.611725	266-00-53	90-04-28	5.410
29-70	-149752.947	-9.638	-40907.923	-4.740	394270.561874	709828.968780	175-56-33	89-55-40	9.285
29-59	-149762.209	-7.768	-40907.266	5.975	317767.642288	-894829.198775	74-18-30	78-21-57	5.524
29-84K	-149760.715	9.638	-40901.948	4.740	-394212.974824	-709865.789100	355-56-25	101-37-55	8.164
合計				倍面積 面積	94.407370 47.20	-94.407370 47.20			28.383

面積 (座標法) 計算書

地番 = 29-24

測点名	[1] X (i)	[2] X (i+1)-X (i-1)	[3] Y (i)	[4] Y (i+1)-Y (i-1)	[2] * [3]	[1] * [4]	方向角	夾角	距離
29-52KS	-149704.952	-35.903	-40756.405	5.699	1463277.208715	-853168.521448	59-49-33	62-03-14	4.866
29-16KS	-149702.506	8.599	-40752.198	14.537	-350428.150602	-2176225.329722	59-13-12	179-23-39	12.024
29-15KS	-149696.353	9.633	-40741.868	16.037	-392466.414444	-2400680.413061	58-37-34	179-24-22	6.684
29-14S	-149692.873	5.236	-40736.161	8.555	-213294.538996	-1280622.528515	58-20-35	179-43-01	3.346
29-13S	-149691.117	4.572	-40733.313	7.389	-186232.707036	-1106067.663513	58-11-45	179-51-10	5.343
29-12S	-149688.301	3.586	-40728.772	6.009	-146053.376392	-899477.000709	62-19-19	184-07-34	1.658
29-11S	-149687.531	3.328	-40727.304	6.512	-135540.467712	-974765.201872	63-06-31	180-47-12	5.656
29-10S	-149684.973	5.025	-40722.260	9.806	-204629.356500	-1467810.845238	62-36-47	179-30-16	5.363
29-145S	-149682.506	3.447	-40717.498	6.608	-140353.215606	-989101.999648	62-02-14	179-25-27	2.090
29-9S	-149681.526	4.987	-40715.652	3.060	-203048.956524	-458025.469560	16-51-19	134-49-05	4.187
29-8	-149677.519	16.806	-40714.438	-5.787	-684246.845028	866183.802453	331-19-17	134-27-58	14.589
29-100	-149664.720	12.049	-40721.439	-21.588	-490652.618511	3230961.975360	267-03-24	115-44-07	14.606
29-118	-149665.470	-1.518	-40736.026	-29.843	61837.287468	4466466.621210	267-07-05	180-03-41	15.275
29-67	-149666.238	-1.133	-40751.282	-21.871	46171.202506	3273350.291298	266-50-30	179-43-25	6.625
29-68K	-149666.603	-38.714	-40757.897	-5.123	1577901.224458	766742.007169	177-46-19	90-55-49	38.378
合計				倍面積 面積	2240.275796 1120.13	-2240.275796 1120.13			140.690

面積 (座標法) 計算書

地番 = 29-25
測点名

	[1] X (i)	[2] X (i+1)-X (i-1)	[3] Y (i)	[4] Y (i+1)-Y (i-1)	[2] * [3]	[1] * [4]	方向角	夾角	距離
29-108	-149686.060	-26.452	-40842.317	-18.551	1080360.969284	2776826.099060	177-33-02	88-56-46	25.997
29-124	-149712.033	-54.793	-40841.206	2.399	2237812.200358	-359159.167167	177-26-28	179-53-26	28.849
29-55	-149740.853	-25.879	-40839.918	9.415	1056896.237922	-1409810.130995	70-06-21	72-39-53	8.643
29-24	-149737.912	6.185	-40831.791	16.865	-252544.627335	-2525329.885880	69-37-57	179-31-36	9.321
29-23	-149734.668	3.835	-40823.053	10.270	-156556.408255	-1537775.040360	68-54-18	179-16-21	1.642
29-83	-149734.077	49.087	-40821.521	0.398	-2003806.001327	-59594.162646	358-39-38	109-45-20	48.509
29-107	-149685.581	48.017	-40822.655	-20.796	-1960181.425135	3112861.342476	268-36-16	89-56-38	19.668
合計				倍面積 面積	1980.945512 990.47	-1980.945512 990.47			142.629

面積 (座標法) 計算書

地番 = 29-26
測点名

	[1] X (i)	[2] X (i+1)-X (i-1)	[3] Y (i)	[4] Y (i+1)-Y (i-1)	[2] * [3]	[1] * [4]	方向角	夾角	距離
29-115K	-149640.776	24.462	-40742.780	-11.070	-996649.884360	1656523.390320	267-01-55	89-59-38	9.791
29-139K	-149641.283	-25.462	-40752.558	-8.502	1037641.631796	1272250.188066	177-04-22	90-02-27	24.988
29-67	-149666.238	-24.462	-40751.282	11.070	996857.860284	-1656805.254660	87-07-06	90-02-44	9.806
29-120K	-149665.745	25.462	-40741.488	8.502	-1037359.767456	-1272458.163990	357-02-17	89-55-11	25.002
合計				倍面積 面積	489.840264 244.92	-489.840264 244.92			69.587

面積 (座標法) 計算書

地番 = 29-27
測点名

	[1] X (i)	[2] X (i+1)-X (i-1)	[3] Y (i)	[4] Y (i+1)-Y (i-1)	[2] * [3]	[1] * [4]	方向角	夾角	距離
29-120K	-149665.745	-24.814	-40741.488	4.362	1010959.283232	-652841.979690	87-06-35	90-04-18	3.074
29-119K	-149665.590	25.128	-40738.418	1.778	-1023674.967504	-266105.419020	357-02-18	89-55-43	25.006
29-116K	-149640.617	24.814	-40739.710	-4.362	-1010915.163940	652732.371354	267-02-07	89-59-49	3.074
29-115K	-149640.776	-25.128	-40742.780	-1.778	1023784.575840	266061.299728	177-02-17	90-00-10	25.002
合計				倍面積 面積	153.727628 76.86	-153.727628 76.86			56.156

面積 (座標法) 計算書

地番 = 29-28
測点名

	[1] X (i)	[2] X (i+1)-X (i-1)	[3] Y (i)	[4] Y (i+1)-Y (i-1)	[2] * [3]	[1] * [4]	方向角	夾角	距離
29-119K	-149665.590	-24.853	-40738.418	3.684	1012471.902554	-551368.033560	87-07-41	90-05-23	2.395
29-118	-149665.470	24.821	-40736.026	1.114	-1011108.901346	-166727.333580	357-02-18	89-54-37	24.734
29-117	-149640.769	24.954	-40737.304	-1.730	-1016558.684016	258878.530370	299-14-14	122-11-56	0.518
29-6	-149640.516	0.152	-40737.756	-2.406	-6192.138912	360035.081496	267-02-28	147-48-14	1.957
29-116K	-149640.617	-25.074	-40739.710	-0.662	1021507.488540	99062.088454	177-02-18	89-59-50	25.006
合計				倍面積 面積	119.666820 59.83	-119.666820 59.83			54.610