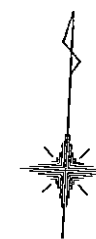
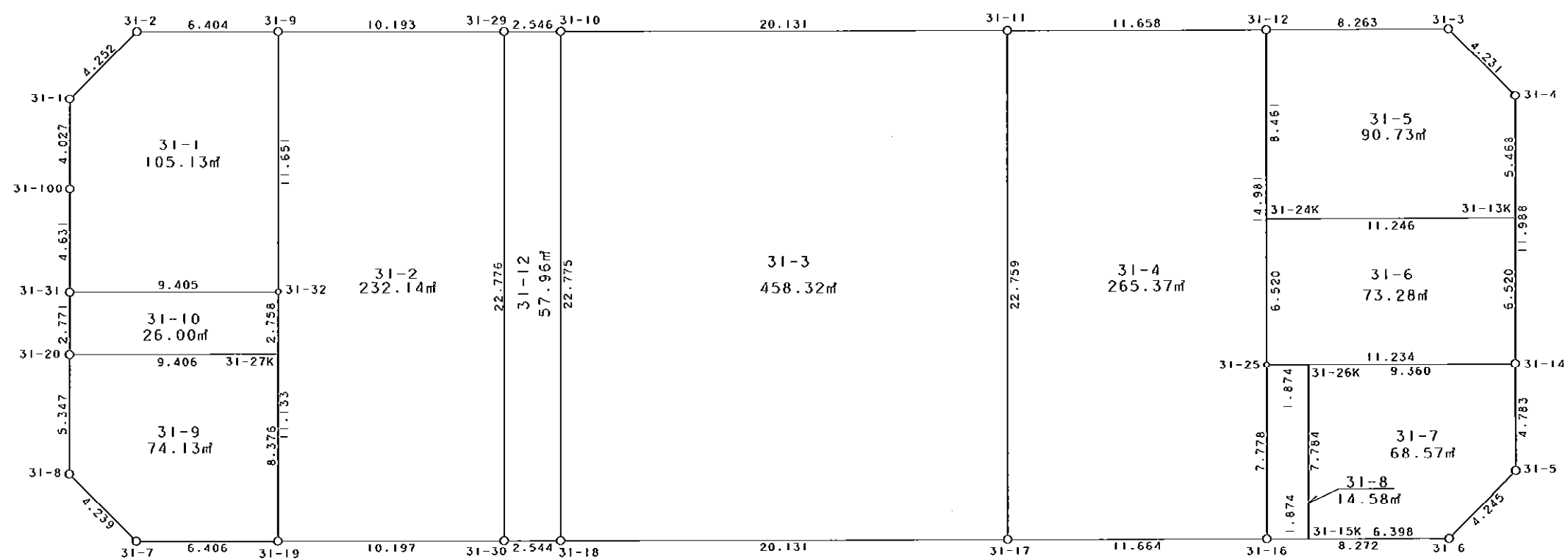


西部第4地区土地区画整理事業 出来形確認測量 (原子図)

31街区



S = 1 / 250



凡 例

記号	名称
⊙	地区界点
○	街区点
○	画地点 (折れ点)
┌	画地点 (直線中)

面積 (座標法) 計算書

地番 = 31街区

測点名	[1] X (i)	[2] X (i+1) - X (i-1)	[3] Y (i)	[4] Y (i+1) - Y (i-1)	[2] * [3]	[1] * [4]	方向角	夾 角	距 離
31-2	-149496.461	-3.490	-40784.841	-9.239	142339.095090	1381197.803179	221-57-33	134-53-41	4.252
31-1	-149499.623	-7.183	-40787.684	-2.624	292977.934172	392287.010752	176-52-57	134-55-24	4.027
31-100	-149503.644	-8.646	-40787.465	0.453	352648.422390	-67725.150732	177-06-13	180-13-16	4.631
31-31	-149508.269	-7.393	-40787.231	0.373	301539.998783	-55766.584337	177-07-31	180-01-18	2.771
31-20	-149511.037	-8.108	-40787.092	0.409	330701.741936	-61150.014133	177-06-20	179-58-49	5.347
31-8	-149516.377	-8.179	-40786.822	3.418	333595.417138	-511046.976586	132-02-44	134-56-24	4.239
31-7	-149519.216	-2.510	-40783.674	9.546	102367.021740	-1427310.435936	87-03-23	135-00-39	6.406
31-19	-149518.887	0.862	-40777.276	16.581	-35150.011912	-2479172.665347	87-00-14	179-56-51	10.197
31-30	-149518.354	0.662	-40767.093	12.724	-26987.815566	-1902471.536296	87-05-37	180-05-23	2.544
31-18	-149518.225	1.168	-40764.552	22.645	-47612.996736	-3385840.205125	87-02-29	179-56-52	20.131
31-17	-149517.186	1.640	-40744.448	31.753	-66820.894720	-4747619.207058	87-02-48	180-00-19	11.664
31-16	-149516.585	1.014	-40732.799	19.911	-41303.058186	-2977024.723935	87-08-18	180-05-30	8.272
31-6	-149516.172	3.587	-40724.537	11.081	-146078.914219	-1656788.701932	41-36-36	134-28-18	4.245
31-5	-149512.998	7.950	-40721.718	2.552	-323737.658100	-381557.170896	356-48-01	135-11-25	4.783
31-14	-149508.222	16.749	-40721.985	-0.863	-682052.526765	129025.595586	357-09-01	180-21-00	11.988
31-4	-149496.249	14.805	-40722.581	-3.740	-602897.811705	559115.971260	312-00-41	134-51-40	4.231
31-3	-149493.417	2.393	-40725.725	-11.395	-97456.659925	1703477.486715	266-57-16	134-56-35	8.263
31-12	-149493.856	-1.040	-40733.976	-19.893	42363.335040	2973881.277408	267-02-41	180-05-25	11.658
31-11	-149494.457	-1.624	-40745.618	-31.747	66170.883632	4746000.526379	267-05-14	180-02-33	20.131
31-10	-149495.480	-1.151	-40765.723	-22.648	46921.347173	3385773.631040	267-07-07	180-01-53	2.546
31-29	-149495.608	-0.653	-40768.266	-12.722	26621.677698	1901883.124976	267-02-51	179-55-44	10.193
31-9	-149496.133	-0.853	-40778.445	-16.575	34784.013585	2477898.404475	267-03-52	180-01-01	6.404
合計				倍面積 面積	2932.540543 1466.27	-2932.540543 1466.27			168.923

地番	筆種別	面積	坪数
31-1	筆界	105.13	31.80
31-2	筆界	232.14	70.22
31-3	筆界	458.32	138.64
31-4	筆界	265.37	80.27
31-5	筆界	90.73	27.44
31-6	筆界	73.28	22.16
31-7	筆界	68.57	20.74
31-8	筆界	14.58	4.41
31-9	筆界	74.13	22.42
31-10	筆界	26.00	7.86
31-12	筆界	57.96	17.53
	合計	1466.21	443.49

面積 (座標法) 計算書

地番 = 31-1
測点名

	[1] X (i)	[2] X (i+1)-X (i-1)	[3] Y (i)	[4] Y (i+1)-Y (i-1)	[2] * [3]	[1] * [4]	方向角	夾角	距離
31-2	-149496.461	-3.490	-40784.841	-9.239	142339.095090	1381197.803179	221-57-33	134-53-41	4.252
31-1	-149499.623	-7.183	-40787.684	-2.624	292977.934172	392287.010752	176-52-57	134-55-24	4.027
31-100	-149503.644	-8.646	-40787.465	0.453	352648.422390	-67725.150732	177-06-13	180-13-16	4.631
31-31	-149508.269	-4.124	-40787.231	9.626	168206.540644	-1439166.597394	86-56-48	89-50-35	9.405
31-32	-149507.768	12.136	-40777.839	8.786	-494879.854104	-1313575.249648	357-01-07	90-04-19	11.651
31-9	-149496.133	11.307	-40778.445	-7.002	-461081.877615	1046771.923266	267-03-52	90-02-45	6.404
合計				倍面積 面積	210.260577 105.13	-210.260577 105.13			40.370

面積 (座標法) 計算書

地番 = 31-2
測点名

	[1] X (i)	[2] X (i+1)-X (i-1)	[3] Y (i)	[4] Y (i+1)-Y (i-1)	[2] * [3]	[1] * [4]	方向角	夾角	距離
31-9	-149496.133	-12.160	-40778.445	-9.573	495865.891200	1431126.481209	177-01-07	89-58-16	11.651
31-32	-149507.768	-22.754	-40777.839	1.169	927858.948606	-174774.580792	177-06-05	180-04-58	11.133
31-19	-149518.887	-10.586	-40777.276	10.746	431668.243736	-1606729.959702	87-00-14	89-54-09	10.197
31-30	-149518.354	23.279	-40767.093	9.010	-949017.157947	-1347160.369540	357-02-52	90-02-38	22.776
31-29	-149495.608	22.221	-40768.266	-11.352	-905911.638786	1697074.142016	267-02-51	89-59-59	10.193
合計				倍面積 面積	464.286809 232.14	-464.286809 232.14			65.950

面積 (座標法) 計算書

地番 = 31-3
測点名

	[1] X (i)	[2] X (i+1)-X (i-1)	[3] Y (i)	[4] Y (i+1)-Y (i-1)	[2] * [3]	[1] * [4]	方向角	夾角	距離
31-10	-149495.480	-23.768	-40765.723	-18.934	968919.704264	2830547.418320	177-03-10	89-57-56	22.775
31-18	-149518.225	-21.706	-40764.552	21.275	884835.365712	-3181000.236875	87-02-29	89-59-19	20.131
31-17	-149517.186	23.768	-40744.448	18.934	-968414.040064	-2830958.399724	357-03-12	90-00-43	22.759
31-11	-149494.457	21.706	-40745.618	-21.275	-884424.384308	3180494.572675	267-05-14	90-02-02	20.131
合計				倍面積 面積	916.645604 458.32	-916.645604 458.32			85.796

面積 (座標法) 計算書

地番 = 31-4
測点名

	[1] X (i)	[2] X (i+1)-X (i-1)	[3] Y (i)	[4] Y (i+1)-Y (i-1)	[2] * [3]	[1] * [4]	方向角	夾角	距離
31-11	-149494.457	-23.330	-40745.618	-10.472	950595.267940	1565505.953704	177-03-12	90-00-31	22.759
31-17	-149517.186	-22.128	-40744.448	12.819	901593.145344	-1916660.807334	87-02-48	89-59-36	11.664
31-16	-149516.585	8.369	-40732.799	11.245	-340892.794831	-1681313.998325	357-01-22	89-58-34	7.778
31-25	-149508.817	22.729	-40733.203	-1.177	-925824.970987	175971.877609	357-02-32	180-01-10	14.981
31-12	-149493.856	14.360	-40733.976	-12.415	-584939.895360	1855966.222240	267-02-41	90-00-09	11.658
合計				倍面積 面積	530.752106 265.37	-530.752106 265.37			68.840

面積 (座標法) 計算書

地番 = 31-5
測点名

	[1] X (i)	[2] X (i+1)-X (i-1)	[3] Y (i)	[4] Y (i+1)-Y (i-1)	[2] * [3]	[1] * [4]	方向角	夾角	距離
31-13K	-149501.710	6.057	-40722.309	10.958	-246655.025613	-1638239.738180	357-08-55	90-11-12	5.468
31-4	-149496.249	8.293	-40722.581	-3.416	-337712.364233	510679.186584	312-00-41	134-51-46	4.231
31-3	-149493.417	2.393	-40725.725	-11.395	-97456.659925	1703477.486715	266-57-16	134-56-35	8.263
31-12	-149493.856	-8.889	-40733.976	-7.814	362084.312664	1168144.990784	177-02-22	90-05-06	8.461
31-24K	-149502.306	-7.854	-40733.539	11.667	319921.215306	-1744243.404102	86-57-43	89-55-21	11.246
合計				倍面積 面積	181.478199 90.73	-181.478199 90.73			37.669

面積 (座標法) 計算書

地番 = 31-6
測点名

	[1] X (i)	[2] X (i+1)-X (i-1)	[3] Y (i)	[4] Y (i+1)-Y (i-1)	[2] * [3]	[1] * [4]	方向角	夾角	距離
31-24K	-149502.306	-7.107	-40733.539	-10.894	289493.261673	1628678.121564	177-02-45	90-05-02	6.520
31-25	-149508.817	-5.916	-40733.203	11.554	240977.628948	-1727424.871618	86-57-50	89-55-05	11.234
31-14	-149508.222	7.107	-40721.985	10.894	-289411.147395	-1628742.570468	357-09-06	90-11-16	6.520
31-13K	-149501.710	5.916	-40722.309	-11.554	-240913.180044	1727342.757340	266-57-43	89-48-37	11.246
合計				倍面積 面積	146.563182 73.28	-146.563182 73.28			35.520

面積 (座標法) 計算書

地番 = 31-7
測点名

	[1] X (i)	[2] X (i+1)-X (i-1)	[3] Y (i)	[4] Y (i+1)-Y (i-1)	[2] * [3]	[1] * [4]	方向角	夾角	距離
31-15K	-149516.491	-7.454	-40730.927	6.795	303608.329858	-1015964.556345	87-08-31	90-07-28	6.398
31-6	-149516.172	3.493	-40724.537	9.209	-142250.807741	-1376894.427948	41-36-36	134-28-05	4.245
31-5	-149512.998	7.950	-40721.718	2.552	-323737.658100	-381557.170896	356-48-01	135-11-25	4.783
31-14	-149508.222	4.280	-40721.985	-9.614	-174290.095800	1437372.046308	266-57-45	90-09-44	9.360
31-26K	-149508.718	-8.269	-40731.332	-8.942	336807.384308	1336906.956356	177-01-03	90-03-18	7.784
合計				倍面積 面積	137.152525 68.57	-137.152525 68.57			32.570

面積 (座標法) 計算書

地番 = 31-8
測点名

	[1] X (i)	[2] X (i+1)-X (i-1)	[3] Y (i)	[4] Y (i+1)-Y (i-1)	[2] * [3]	[1] * [4]	方向角	夾角	距離
31-26K	-149508.718	7.674	-40731.332	-2.276	-312572.241768	340281.842168	266-58-16	89-57-13	1.874
31-25	-149508.817	-7.867	-40733.203	-1.467	320448.108001	219329.434539	177-01-22	90-03-06	7.778
31-16	-149516.585	-7.674	-40732.799	2.276	312583.499526	-340299.747460	87-07-31	90-06-09	1.874
31-15K	-149516.491	7.867	-40730.927	1.467	-320430.202709	-219340.692297	357-01-03	89-53-32	7.784
合計				倍面積 面積	29.163050 14.58	-29.163050 14.58			19.310

面積 (座標法) 計算書

地番 = 31-9

測点名	[1] X (i)	[2] X (i+1)-X (i-1)	[3] Y (i)	[4] Y (i+1)-Y (i-1)	[2] * [3]	[1] * [4]	方向角	夾角	距離
31-20	-149511.037	-5.855	-40787.092	-9.122	238808.423660	1363839.679514	177-06-20	90-14-39	5.347
31-8	-149516.377	-8.179	-40786.822	3.418	333595.417138	-511046.976586	132-02-44	134-56-24	4.239
31-7	-149519.216	-2.510	-40783.674	9.546	102367.021740	-1427310.435936	87-03-23	135-00-39	6.406
31-19	-149518.887	8.694	-40777.276	5.974	-354517.637544	-893225.830938	357-05-54	90-02-31	8.376
31-27K	-149510.522	7.850	-40777.700	-9.816	-320104.945000	1467595.283952	266-51-41	89-45-47	9.406
合計				倍面積 面積	148.279994 74.13	-148.279994 74.13			33.774

面積 (座標法) 計算書

地番 = 31-10

測点名	[1] X (i)	[2] X (i+1)-X (i-1)	[3] Y (i)	[4] Y (i+1)-Y (i-1)	[2] * [3]	[1] * [4]	方向角	夾角	距離
31-20	-149511.037	-2.253	-40787.092	9.531	91893.318276	-1424989.693647	86-51-41	89-44-10	9.406
31-27K	-149510.522	3.269	-40777.700	9.253	-133302.301300	-1383420.860066	357-06-38	90-14-57	2.758
31-32	-149507.768	2.253	-40777.839	-9.531	-91872.471267	1424958.536808	266-56-48	89-50-10	9.405
31-31	-149508.269	-3.269	-40787.231	-9.253	133333.458139	1383400.013057	177-07-31	90-10-43	2.771
合計				倍面積 面積	52.003848 26.00	-52.003848 26.00			24.340

面積 (座標法) 計算書

地番 = 31-12

測点名	[1] X (i)	[2] X (i+1)-X (i-1)	[3] Y (i)	[4] Y (i+1)-Y (i-1)	[2] * [3]	[1] * [4]	方向角	夾角	距離
31-29	-149495.608	-22.874	-40768.266	-1.370	932533.316484	204808.982960	177-02-52	89-55-45	22.776
31-30	-149518.354	-22.617	-40767.093	3.714	922029.342381	-555311.166756	87-05-37	90-02-45	2.544
31-18	-149518.225	22.874	-40764.552	1.370	-932448.362448	-204839.968250	357-03-10	89-57-33	22.775
31-10	-149495.480	22.617	-40765.723	-3.714	-921998.357091	555226.212720	267-07-07	90-03-57	2.546
合計				倍面積 面積	115.939326 57.96	-115.939326 57.96			50.641