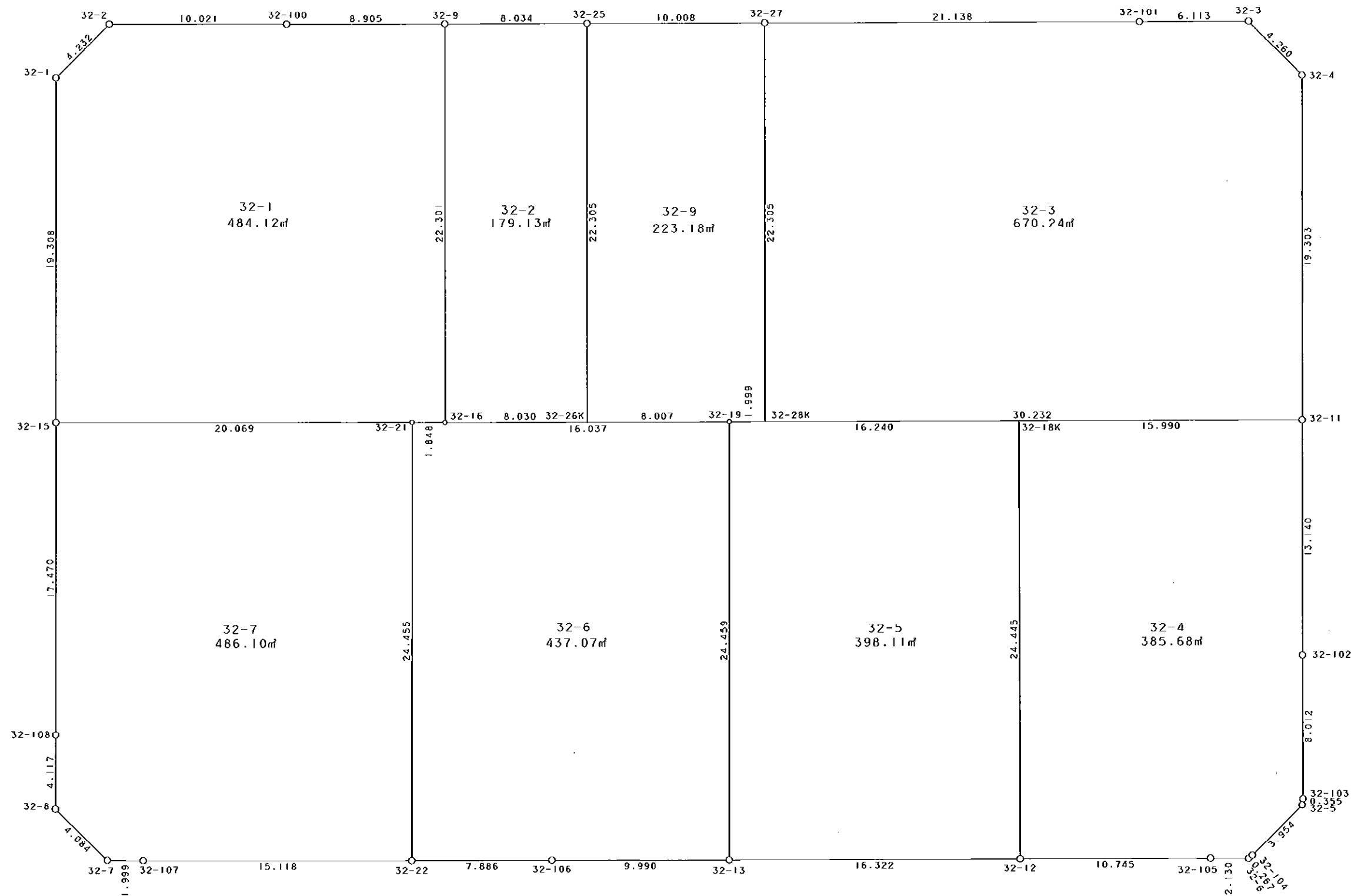


西部第4地区土地区画整理事業 出来形確認測量（原子図）

32街区



S = 1 / 250



凡 例

記号	名称
	地区界点
	街区点
	画地点(折れ点)
	画地点(直線中)

面積 (座標法) 計算書

地番 = 32街区

測点名	[1] X (i)	[2] X (i+1)-X (i-1)	[3] Y (i)	[4] Y (i+1)-Y (i-1)	[2]*[3]	[1]*[4]	方向角	夾角	距離
32-2	-149527.203	-3.643	-40783.273	-12.849	148573.463539	1921275.031347	222-10-28	135-04-28	4.232
32-1	-149530.339	-22.418	-40786.114	-1.830	914343.103652	273640.520370	176-59-55	134-49-27	19.308
32-15	-149549.621	-36.728	-40785.103	1.927	1497955.262984	-288182.119667	176-59-40	179-59-45	17.470
32-108	-149567.067	-21.558	-40784.187	1.121	879225.503346	-167664.682107	177-08-45	180-09-05	4.117
32-8	-149571.179	-6.799	-40783.982	3.280	277290.293618	-490593.467120	131-08-52	134-00-07	4.084
32-7	-149573.866	-2.602	-40780.907	5.072	106111.920014	-758638.648352	87-33-46	136-24-54	1.999
32-107	-149573.781	0.859	-40778.910	17.095	-35029.083690	-2556963.786195	87-03-55	179-30-09	15.118
32-22	-149573.007	1.189	-40763.812	22.973	-48468.172468	-3436140.689811	86-59-00	179-55-05	7.886
32-106	-149572.592	0.915	-40755.937	17.852	-37291.682355	-2670169.912384	87-07-52	180-08-52	9.990
32-13	-149572.092	1.352	-40745.960	26.277	-55088.537920	-3930305.861484	87-00-28	179-52-36	16.322
32-12	-149571.240	1.399	-40729.660	27.031	-56980.794340	-4043060.188440	87-04-55	180-04-27	10.745
32-105	-149570.693	0.646	-40718.929	12.859	-26304.428134	-1923329.541287	87-20-11	180-15-16	2.130
32-6	-149570.594	0.282	-40716.801	2.323	-11482.137882	-347452.489862	46-49-06	139-28-55	0.267
32-104	-149570.411	3.106	-40716.606	2.858	-126465.778236	-427472.234638	42-20-06	175-31-00	3.954
32-5	-149567.488	3.277	-40713.943	2.693	-133419.591211	-402785.245184	4-50-38	142-30-32	0.355
32-103	-149567.134	8.355	-40713.913	-0.395	-340164.743115	59079.017930	356-57-34	172-06-56	8.012
32-102	-149559.133	21.124	-40714.338	-1.099	-860049.675912	164365.487167	357-03-35	180-06-01	13.140
32-11	-149546.010	32.402	-40715.012	-1.645	-1319247.818824	246003.186450	357-07-00	180-03-25	19.303
32-4	-149526.731	22.138	-40715.983	-4.129	-901370.431654	617395.872299	312-09-19	135-02-19	4.260
32-3	-149523.872	2.533	-40719.141	-9.262	-103141.584153	1384890.102464	266-56-34	134-47-15	6.113
32-101	-149524.198	-1.414	-40725.245	-27.214	57585.496430	4069151.524372	267-02-59	180-06-25	21.138
32-27	-149525.286	-1.609	-40746.355	-31.104	65560.885195	4650834.495744	267-00-57	179-57-58	10.008
32-25	-149525.807	-0.945	-40756.349	-18.017	38514.749805	2694006.464719	266-58-29	179-57-32	8.034
32-9	-149526.231	-0.889	-40764.372	-16.916	36239.526708	2529385.723596	267-00-25	180-01-56	8.905
32-100	-149526.696	-0.972	-40773.265	-18.901	39631.613580	2826204.081096	267-06-00	180-05-35	10.021
合計				倍面積 面積	6527.358977 3263.67	-6527.358977 3263.67			226.911

地番	種別	面積	坪数
32-1	筆界	484.12	146.44
32-2	筆界	179.13	54.18
32-3	筆界	670.24	202.74
32-4	筆界	385.68	116.66
32-5	筆界	398.11	120.42
32-6	筆界	437.07	132.21
32-7	筆界	486.10	147.04
32-9	筆界	223.18	67.51
	筆合	3263.63	987.20

面積 (座標法) 計算書

地番 = 32-1
測点名

	[1] X (i)	[2] X (i+1)-X (i-1)	[3] Y (i)	[4] Y (i+1)-Y (i-1)	[2] * [3]	[1] * [4]	方向角	夾角	距離
32-2	-149527.203	-3.643	-40783.273	-12.849	148573.463539	1921275.031347	222-10-28	135-04-28	4.232
32-1	-149530.339	-22.418	-40786.114	-1.830	914343.103652	273640.520370	176-59-55	134-49-27	19.308
32-15	-149549.621	-18.245	-40785.103	21.053	744124.204235	-3148468.170913	87-02-17	90-02-22	20.069
32-21	-149548.584	1.119	-40765.061	21.888	-45616.103259	-3273319.406592	87-27-24	180-25-07	1.848
32-16	-149548.502	22.353	-40763.215	0.689	-911180.144895	-103038.917878	357-01-34	89-34-10	22.301
32-9	-149526.231	21.806	-40764.372	-10.050	-888907.895832	1502738.621550	267-00-25	89-58-51	8.905
32-100	-149526.696	-0.972	-40773.265	-18.901	39631.613580	2826204.081096	267-06-00	180-05-35	10.021
合計				倍面積 面積	968.241020 484.12	-968.241020 484.12			86.684

面積 (座標法) 計算書

地番 = 32-2
測点名

	[1] X (i)	[2] X (i+1)-X (i-1)	[3] Y (i)	[4] Y (i+1)-Y (i-1)	[2] * [3]	[1] * [4]	方向角	夾角	距離
32-25	-149525.807	21.851	-40756.349	-9.176	-890566.981999	1372048.805032	266-58-29	89-56-16	8.034
32-9	-149526.231	-22.695	-40764.372	-6.866	925147.422540	1026647.102046	177-01-34	90-03-05	22.301
32-16	-149548.502	-21.851	-40763.215	9.176	890717.010965	-1372257.054352	87-00-07	89-58-33	8.030
32-26K	-149548.082	22.695	-40755.196	6.866	-924939.173220	-1026797.131012	357-02-13	90-02-06	22.305
合計				倍面積 面積	358.278286 179.13	-358.278286 179.13			60.670

面積 (座標法) 計算書

地番 = 32-3
測点名

	[1] X (i)	[2] X (i+1)-X (i-1)	[3] Y (i)	[4] Y (i+1)-Y (i-1)	[2] * [3]	[1] * [4]	方向角	夾角	距離
32-27	-149525.286	-23.363	-40746.355	-19.959	951957.091865	2984375.183274	177-02-31	89-59-32	22.305
32-28K	-149547.561	-20.724	-40745.204	31.343	844403.607696	-4687269.204423	87-03-33	90-01-02	30.232
32-11	-149546.010	20.830	-40715.012	29.221	-848093.699960	-4369883.958210	357-07-00	90-03-27	19.303
32-4	-149526.731	22.138	-40715.983	-4.129	-901370.431654	617395.872299	312-09-19	135-02-19	4.260
32-3	-149523.872	2.533	-40719.141	-9.262	-103141.584153	1384890.102464	266-56-34	134-47-15	6.113
32-101	-149524.198	-1.414	-40725.245	-27.214	57585.496430	4069151.524372	267-02-59	180-06-25	21.138
合計				倍面積 面積	1340.480224 670.24	-1340.480224 670.24			103.351

面積 (座標法) 計算書

地番 = 32-4
測点名

	[1] X (i)	[2] X (i+1)-X (i-1)	[3] Y (i)	[4] Y (i+1)-Y (i-1)	[2] * [3]	[1] * [4]	方向角	夾角	距離
32-12	-149571.240	-23.862	-40729.660	12.052	971891.146920	-1802632.584480	87-04-55	90-10-47	10.745
32-105	-149570.693	0.646	-40718.929	12.859	-26304.428134	-1923329.541287	87-20-11	180-15-16	2.130
32-6	-149570.594	0.282	-40716.801	2.323	-11482.137882	-347452.489862	46-49-06	139-28-55	0.267
32-104	-149570.411	3.106	-40716.606	2.858	-126465.778236	-427472.234638	42-20-06	175-31-00	3.954
32-5	-149567.488	3.277	-40713.943	2.693	-133419.591211	-402785.245184	4-50-38	142-30-32	0.355
32-103	-149567.134	8.355	-40713.913	-0.395	-340164.743115	59079.017930	356-57-34	172-06-56	8.012
32-102	-149559.133	21.124	-40714.338	-1.099	-860049.675912	164365.487167	357-03-35	180-06-01	13.140
32-11	-149546.010	12.302	-40715.012	-16.643	-500876.077624	2488894.244430	267-03-25	89-59-50	15.990
32-18K	-149546.831	-25.230	-40730.981	-14.648	1027642.650630	2190561.980488	176-54-08	89-50-43	24.445
合計				倍面積 面積	771.365436 385.68	-771.365436 385.68			79.038

面積 (座標法) 計算書

地番 = 32-5
測点名

	[1] X (i)	[2] X (i+1)-X (i-1)	[3] Y (i)	[4] Y (i+1)-Y (i-1)	[2] * [3]	[1] * [4]	方向角	夾角	距離
32-12	-149571.240	25.261	-40729.660	14.979	-1028871.941260	-2240427.603960	356-54-08	89-53-40	24.445
32-18K	-149546.831	23.576	-40730.981	-17.540	-960273.608056	2623051.415740	267-03-36	90-09-28	16.240
32-19	-149547.664	-25.261	-40747.200	-14.979	1029315.019200	2240074.459056	177-05-39	90-02-03	24.459
32-13	-149572.092	-23.576	-40745.960	17.540	960626.752960	-2623494.493680	87-00-28	89-54-49	16.322
合計				倍面積 面積	796.222844 398.11	-796.222844 398.11			81.466

面積 (座標法) 計算書

地番 = 32-6
測点名

	[1] X (i)	[2] X (i+1)-X (i-1)	[3] Y (i)	[4] Y (i+1)-Y (i-1)	[2] * [3]	[1] * [4]	方向角	夾角	距離
32-21	-149548.584	-24.505	-40765.061	-0.597	998947.819805	89280.504648	177-04-21	89-36-57	24.455
32-22	-149573.007	-24.008	-40763.812	9.124	978657.598496	-1364704.115868	86-59-00	89-54-39	7.886
32-106	-149572.592	0.915	-40755.937	17.852	-37291.682355	-2670169.912384	87-07-52	180-08-52	9.990
32-13	-149572.092	24.928	-40745.960	8.737	-1015715.290880	-1306811.367804	357-05-39	89-57-47	24.459
32-19	-149547.664	23.590	-40747.200	-17.255	-961226.448000	2580444.942320	267-00-17	89-54-38	16.037
32-16	-149548.502	-0.920	-40763.215	-17.861	37502.157800	2671085.794222	267-27-24	180-27-07	1.848
合計				倍面積 面積	874.154866 437.07	-874.154866 437.07			84.675

面積 (座標法) 計算書

地番 = 32-7

測点名	[1] X (i)	[2] X (i+1) - X (i-1)	[3] Y (i)	[4] Y (i+1) - Y (i-1)	[2] * [3]	[1] * [4]	方向角	夾角	距離
32-15	-149549.621	-18.483	-40785.103	-19.126	753831.058749	2860286.051246	176-59-40	89-57-23	17.470
32-108	-149567.067	-21.558	-40784.187	1.121	879225.503346	-167664.682107	177-08-45	180-09-05	4.117
32-8	-149571.179	-6.799	-40783.982	3.280	277290.293618	-490593.467120	131-08-52	134-00-07	4.084
32-7	-149573.866	-2.602	-40780.907	5.072	106111.920014	-758638.648352	87-33-46	136-24-54	1.999
32-107	-149573.781	0.859	-40778.910	17.095	-35029.083690	-2556963.786195	87-03-55	179-30-09	15.118
32-22	-149573.007	25.197	-40763.812	13.849	-1027125.770964	-2071436.573943	357-04-21	90-00-26	24.455
32-21	-149548.584	23.386	-40765.061	-21.291	-953331.716546	3184038.901944	267-02-17	89-57-56	20.069
合計				倍面積 面積	972.204527 486.10	-972.204527 486.10			87.312

面積 (座標法) 計算書

地番 = 32-9

測点名	[1] X (i)	[2] X (i+1) - X (i-1)	[3] Y (i)	[4] Y (i+1) - Y (i-1)	[2] * [3]	[1] * [4]	方向角	夾角	距離
32-25	-149525.807	-22.796	-40756.349	-8.841	929081.731804	1321957.659687	177-02-13	90-01-16	22.305
32-26K	-149548.082	-21.857	-40755.196	9.149	890786.318972	-1368215.402218	87-00-27	89-58-14	8.007
32-19	-149547.664	0.521	-40747.200	9.992	-21229.291200	-1494280.258688	87-02-46	180-02-19	1.999
32-28K	-149547.561	22.378	-40745.204	0.845	-911796.175112	-126367.689045	357-02-31	89-59-45	22.305
32-27	-149525.286	21.754	-40746.355	-11.145	-886396.206670	1666459.312470	267-00-57	89-58-26	10.008
合計				倍面積 面積	446.377794 223.18	-446.377794 223.18			64.624