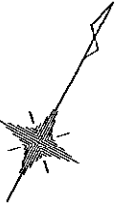
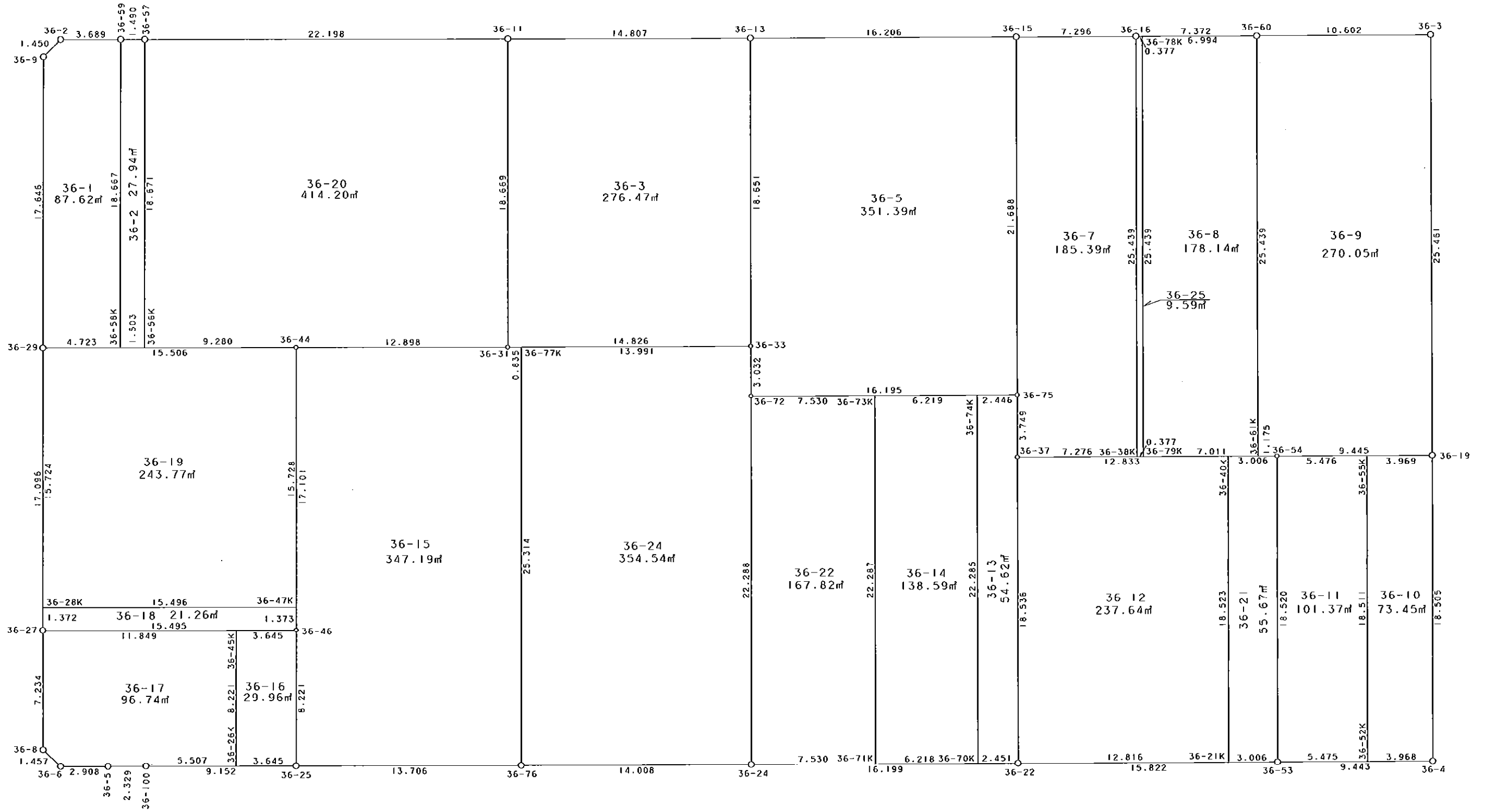


36街区



S = 1 / 250



凡例

記号	名称
⊙	地区界点
○	街区点
○	画地点(折れ点)
┆	画地点(直線中)

面積 (座標法) 計算書

地番 = 36街区

測点名	[1] X (i)	[2] X (i+1)-X (i-1)	[3] Y (i)	[4] Y (i+1)-Y (i-1)	[2] * [3]	[1] * [4]	方向角	夾角	距離
36-2	-149636.360	-3.162	-40724.399	-3.654	128770.549638	546771.259440	196-47-52	135-32-14	1.450
36-9	-149637.748	-16.877	-40724.818	8.035	687312.753386	-1202339.305180	151-22-26	134-34-34	17.646
36-29	-149653.237	-30.478	-40716.364	16.676	1240953.341992	-2495617.380212	151-15-13	179-52-47	17.096
36-27	-149668.226	-21.319	-40708.142	11.723	867856.879298	-1754560.613398	151-03-14	179-48-01	7.234
36-8	-149674.556	-6.699	-40704.641	4.910	272680.390059	-734902.069960	104-40-32	133-37-18	1.457
36-6	-149674.925	1.024	-40703.232	3.962	-41680.109568	-593012.052850	61-22-54	136-42-22	2.908
36-5	-149673.532	2.523	-40700.679	4.590	-102687.813117	-687001.511880	60-58-52	179-35-58	2.329
36-100	-149672.402	5.518	-40698.642	10.069	-224575.106556	-1507051.415738	61-21-06	180-22-14	9.152
36-25	-149668.014	10.962	-40690.610	20.058	-446050.466820	-3002041.024812	61-20-13	179-59-07	13.706
36-76	-149661.440	13.296	-40678.584	24.316	-540862.452864	-3639167.575040	61-19-25	179-59-12	14.008
36-24	-149654.718	14.482	-40666.294	26.509	-588929.269708	-3967196.919462	61-22-36	180-03-11	16.199
36-22	-149646.958	15.354	-40652.075	28.100	-624171.959550	-4205079.519800	61-19-04	179-56-28	15.822
36-53	-149639.364	12.132	-40638.194	22.162	-493022.569608	-3316307.584968	61-16-38	179-57-34	9.443
36-4	-149634.826	20.792	-40629.913	-0.564	-844777.151096	84394.041864	331-26-46	90-10-08	18.505
36-19	-149618.572	38.587	-40638.758	-21.073	-1568127.754946	3152912.167756	331-17-53	179-51-07	25.461
36-3	-149596.239	17.233	-40650.986	-21.523	-700538.441738	3219759.851997	241-14-50	89-56-57	10.602
36-60	-149601.339	-8.631	-40660.281	-15.766	350938.885311	2358614.710674	241-22-49	180-07-59	7.372
36-16	-149604.870	-7.028	-40666.752	-12.874	285805.933056	1926013.096380	241-21-32	179-58-43	7.296
36-15	-149608.367	-11.263	-40673.155	-20.627	458101.744765	3085971.786109	241-21-59	180-00-27	16.206
36-13	-149616.133	-14.861	-40687.379	-27.221	604655.139319	4072700.756393	241-22-12	180-00-13	14.807
36-11	-149623.228	-17.735	-40700.376	-32.479	721821.168360	4859612.822212	241-21-33	179-59-21	22.198
36-57	-149633.868	-11.358	-40719.858	-20.788	462496.147164	3110588.847984	241-11-58	179-50-25	1.490
36-59	-149634.586	-2.492	-40721.164	-4.541	101477.140688	679490.655026	241-15-38	180-03-40	3.689
合計				倍面積 面積	7446.977465 3723.48	-7446.977465 3723.48			256.076

地番	筆種別	面積	坪数
36-1	筆界	87.62	26.50
36-2	筆界	27.94	8.45
36-3	筆界	276.47	83.63
36-5	筆界	351.39	106.29
36-7	筆界	185.39	56.08
36-8	筆界	178.14	53.89
36-9	筆界	270.05	81.69
36-10	筆界	73.45	22.21
36-11	筆界	101.37	30.66
36-12	筆界	237.64	71.88
36-13	筆界	54.62	16.52
36-14	筆界	138.59	41.92
36-15	筆界	347.19	105.02
36-16	筆界	29.96	9.06
36-17	筆界	96.74	29.26
36-18	筆界	21.26	6.43
36-19	筆界	243.77	73.74
36-20	筆界	414.20	125.29
36-21	筆界	55.67	16.84
36-22	筆界	167.82	50.76
36-24	筆界	354.54	107.24
36-25	筆界	9.59	2.90
	筆合	3723.41	1126.26

面積 (座標法) 計算書

地番 = 36-1

測点名	[1] X (i)	[2] X (i+1)-X (i-1)	[3] Y (i)	[4] Y (i+1)-Y (i-1)	[2] * [3]	[1] * [4]	方向角	夾角	距離
36-59	-149634.586	14.611	-40721.164	-12.179	-594976.927204	1822399.622894	241-15-38	89-53-21	3.689
36-2	-149636.360	-3.162	-40724.399	-3.654	128770.549638	546771.259440	196-47-52	135-32-14	1.450
36-9	-149637.748	-16.877	-40724.818	8.035	687312.753386	-1202339.305180	151-22-26	134-34-34	17.646
36-29	-149653.237	-13.223	-40716.364	12.598	538392.481172	-1885331.479726	61-19-46	89-57-20	4.723
36-58K	-149650.971	18.651	-40712.220	-4.800	-759323.615220	718324.660800	331-22-17	90-02-31	18.667
合計				倍面積 面積	175.241772 87.62	-175.241772 87.62			46.175

面積 (座標法) 計算書

地番 = 36-2

測点名	[1] X (i)	[2] X (i+1)-X (i-1)	[3] Y (i)	[4] Y (i+1)-Y (i-1)	[2] * [3]	[1] * [4]	方向角	夾角	距離
36-59	-149634.586	-17.103	-40721.164	7.638	696454.067892	-1142908.967868	151-22-17	90-10-19	18.667
36-58K	-149650.971	-15.664	-40712.220	10.263	637716.214080	-1535867.915373	61-20-16	89-57-59	1.503
36-56K	-149650.250	17.103	-40710.901	-7.638	-696278.539803	1143028.609500	331-19-55	89-59-39	18.671
36-57	-149633.868	15.664	-40719.858	-10.263	-637835.855712	1535692.387284	241-11-58	89-52-03	1.490
合計				倍面積 面積	55.886457 27.94	-55.886457 27.94			40.331

面積 (座標法) 計算書

地番 = 36-3

測点名	[1] X (i)	[2] X (i+1)-X (i-1)	[3] Y (i)	[4] Y (i+1)-Y (i-1)	[2] * [3]	[1] * [4]	方向角	夾角	距離
36-13	-149616.133	9.270	-40687.379	-21.943	-377172.003330	3283026.806419	241-22-12	90-02-00	14.807
36-11	-149623.228	-23.485	-40700.376	-4.058	955848.330360	607171.059224	151-23-32	90-01-20	18.669
36-31	-149639.618	-9.270	-40691.437	21.943	377209.620990	-3283542.137774	61-17-54	89-54-22	14.826
36-33	-149632.498	23.485	-40678.433	4.058	-955332.999005	-607208.676884	331-20-12	90-02-18	18.651
合計				倍面積 面積	552.949015 276.47	-552.949015 276.47			66.953

面積 (座標法) 計算書

地番 = 36-5

測点名	[1] X (i)	[2] X (i+1)-X (i-1)	[3] Y (i)	[4] Y (i+1)-Y (i-1)	[2] * [3]	[1] * [4]	方向角	夾角	距離
36-13	-149616.133	-24.131	-40687.379	-5.278	981827.142649	789673.949974	151-20-12	89-58-13	18.651
36-33	-149632.498	-19.021	-40678.433	10.408	773744.474093	-1557375.039184	151-10-10	179-49-58	3.032
36-72	-149635.154	5.100	-40676.971	15.679	-207452.552100	-2346129.579566	61-23-08	90-12-58	16.195
36-75	-149627.398	26.787	-40662.754	3.816	-1089233.191398	-570978.150768	331-20-32	89-57-24	21.688
36-15	-149608.367	11.265	-40673.155	-24.625	-458183.091075	3684106.037375	241-21-59	90-01-27	16.206
合計				倍面積 面積	702.782169 351.39	-702.782169 351.39			75.772

面積 (座標法) 計算書

地番 = 36-7

測点名	[1] X (i)	[2] X (i+1)-X (i-1)	[3] Y (i)	[4] Y (i+1)-Y (i-1)	[2] * [3]	[1] * [4]	方向角	夾角	距離
36-16	-149604.870	18.833	-40666.752	-18.590	-765876.940416	2781154.533300	241-21-32	89-58-59	7.296
36-15	-149608.367	-22.528	-40673.155	3.998	916284.835840	-598134.251266	151-20-32	89-59-00	21.688
36-75	-149627.398	-22.319	-40662.754	12.203	907552.006526	-1825903.137794	151-16-30	179-55-58	3.749
36-37	-149630.686	0.198	-40660.952	8.189	-8050.868496	-1225325.687654	61-22-28	90-05-58	7.276
36-38K	-149627.200	25.816	-40654.565	-5.800	-1049538.250040	867837.760000	331-22-33	90-00-05	25.439
合計				倍面積 面積	370.783414 185.39	-370.783414 185.39			65.448

面積 (座標法) 計算書

地番 = 36-8

測点名	[1] X (i)	[2] X (i+1)-X (i-1)	[3] Y (i)	[4] Y (i+1)-Y (i-1)	[2] * [3]	[1] * [4]	方向角	夾角	距離
36-79K	-149627.019	-18.972	-40654.234	18.342	771292.127448	-2744458.782498	61-23-04	90-00-31	7.011
36-61K	-149623.661	25.680	-40648.079	-6.047	-1043842.668720	904774.278067	331-20-15	89-57-11	25.439
36-60	-149601.339	18.972	-40660.281	-18.342	-771406.851132	2743987.759938	241-22-59	90-02-44	6.994
36-78K	-149604.689	-25.680	-40666.421	6.047	1044313.691280	-904659.554383	151-22-33	89-59-34	25.439
合計				倍面積 面積	356.298876 178.14	-356.298876 178.14			64.883

面積 (座標法) 計算書

地番 = 36-9

測点名	[1] X (i)	[2] X (i+1)-X (i-1)	[3] Y (i)	[4] Y (i+1)-Y (i-1)	[2] * [3]	[1] * [4]	方向角	夾角	距離
36-60	-149601.339	-27.422	-40660.281	2.907	1114986.225582	-434891.092473	151-20-15	90-05-25	25.439
36-61K	-149623.661	-21.759	-40648.079	13.233	884461.550961	-1979969.906013	61-21-44	90-01-29	1.175
36-54	-149623.098	5.089	-40647.048	9.321	-206852.827272	-1394636.896458	61-22-02	180-00-18	9.445
36-19	-149618.572	26.859	-40638.758	-3.938	-1091516.401122	589197.936536	331-17-53	89-55-51	25.461
36-3	-149596.239	17.233	-40650.986	-21.523	-700538.441738	3219759.851997	241-14-50	89-56-57	10.602
合計				倍面積 面積	540.106411 270.05	-540.106411 270.05			72.122

面積 (座標法) 計算書

地番 = 36-10

測点名	[1] X (i)	[2] X (i+1)-X (i-1)	[3] Y (i)	[4] Y (i+1)-Y (i-1)	[2] * [3]	[1] * [4]	方向角	夾角	距離
36-52K	-149636.733	-14.352	-40633.393	12.329	583170.456336	-1844871.281157	61-16-40	89-50-06	3.968
36-4	-149634.826	18.161	-40629.913	-5.365	-737879.849993	802790.841490	331-26-46	90-10-06	18.505
36-19	-149618.572	14.352	-40638.758	-12.329	-583247.454816	1844647.374188	241-22-08	89-55-22	3.969
36-55K	-149620.474	-18.161	-40642.242	5.365	738103.756962	-802713.843010	151-26-34	90-04-26	18.511
合計				倍面積 面積	146.908489 73.45	-146.908489 73.45			44.953

面積 (座標法) 計算書

地番 = 36-11
測点名

	[1] X (i)	[2] X (i+1)-X (i-1)	[3] Y (i)	[4] Y (i+1)-Y (i-1)	[2] * [3]	[1] * [4]	方向角	夾角	距離
36-55K	-149620.474	13.635	-40642.242	-13.655	-554156.969670	2043067.572470	241-21-58	89-55-24	5.476
36-54	-149623.098	-18.890	-40647.048	4.048	767822.736720	-605674.300704	151-26-22	90-04-24	18.520
36-53	-149639.364	-13.635	-40638.194	13.655	554101.775190	-2043325.515420	61-16-36	89-50-14	5.475
36-52K	-149636.733	18.890	-40633.393	-4.048	-767564.793770	605729.495184	331-26-34	90-09-58	18.511
合計				倍面積 面積	202.748470 101.37	-202.748470 101.37			47.982

面積 (座標法) 計算書

地番 = 36-12
測点名

	[1] X (i)	[2] X (i+1)-X (i-1)	[3] Y (i)	[4] Y (i+1)-Y (i-1)	[2] * [3]	[1] * [4]	方向角	夾角	距離
36-40K	-149624.538	10.121	-40649.687	-20.121	-411415.482127	3010595.329098	241-22-34	89-56-16	12.833
36-37	-149630.686	-22.420	-40660.952	-2.388	911618.543840	357318.078168	151-23-09	90-00-35	18.536
36-22	-149646.958	-10.121	-40652.075	20.121	411439.651075	-3011046.441918	61-19-09	89-56-00	12.816
36-21K	-149640.807	22.420	-40640.831	-2.388	-911167.431020	-357342.247116	331-26-18	90-07-09	18.523
合計				倍面積 面積	475.281768 237.64	-475.281768 237.64			62.708

面積 (座標法) 計算書

地番 = 36-13
測点名

	[1] X (i)	[2] X (i+1)-X (i-1)	[3] Y (i)	[4] Y (i+1)-Y (i-1)	[2] * [3]	[1] * [4]	方向角	夾角	距離
36-70K	-149648.132	-18.388	-40654.226	12.826	747549.907688	-1919386.941032	61-22-29	89-59-46	2.451
36-22	-149646.958	17.446	-40652.075	-6.726	-709216.100450	1006525.439508	331-23-09	90-00-40	18.536
36-37	-149630.686	19.560	-40660.952	-10.679	-795328.221120	1597906.095794	331-16-30	179-53-21	3.749
36-75	-149627.398	2.116	-40662.754	-3.949	-86042.387464	590878.594702	241-22-15	90-05-45	2.446
36-74K	-149628.570	-20.734	-40664.901	8.528	843146.057334	-1276032.444960	151-22-43	90-00-28	22.285
合計				倍面積 面積	109.255988 54.62	-109.255988 54.62			49.467

面積 (座標法) 計算書

地番 = 36-14
測点名

	[1] X (i)	[2] X (i+1)-X (i-1)	[3] Y (i)	[4] Y (i+1)-Y (i-1)	[2] * [3]	[1] * [4]	方向角	夾角	距離
36-74K	-149628.570	16.584	-40664.901	-16.135	-674386.718184	2414256.976950	241-23-28	90-00-45	6.219
36-73K	-149631.548	-22.541	-40670.361	5.217	916750.607301	-780627.785916	151-22-31	89-59-03	22.287
36-71K	-149651.111	-16.584	-40659.684	16.135	674300.199456	-2414620.675985	61-22-27	89-59-56	6.218
36-70K	-149648.132	22.541	-40654.226	-5.217	-916386.908266	780714.304644	331-22-43	90-00-16	22.285
合計				倍面積 面積	277.180307 138.59	-277.180307 138.59			57.009

面積 (座標法) 計算書

地番 = 36-15

測点名	[1] X (i)	[2] X (i+1)-X (i-1)	[3] Y (i)	[4] Y (i+1)-Y (i-1)	[2] * [3]	[1] * [4]	方向角	夾角	距離
36-76	-149661.440	28.797	-40678.584	-0.095	-1171421.183448	14217.836800	331-23-27	90-03-14	25.314
36-77K	-149639.217	21.822	-40690.705	-12.853	-887952.564510	1923312.856101	241-17-08	89-53-41	0.835
36-31	-149639.618	-6.580	-40691.437	-12.054	267749.655460	1803755.955372	241-22-35	180-05-27	12.898
36-44	-149645.797	-21.178	-40702.759	-3.108	862003.030102	465099.137076	151-17-36	89-55-01	17.101
36-46	-149660.796	-22.217	-40694.545	12.149	904110.706265	-1818229.010604	151-24-08	180-06-32	8.221
36-25	-149668.014	-0.644	-40690.610	15.961	26204.752840	-2388851.171454	61-20-13	89-56-05	13.706
合計				倍面積 面積	694.396709 347.19	-694.396709 347.19			78.075

面積 (座標法) 計算書

地番 = 36-16

測点名	[1] X (i)	[2] X (i+1)-X (i-1)	[3] Y (i)	[4] Y (i+1)-Y (i-1)	[2] * [3]	[1] * [4]	方向角	夾角	距離
36-26K	-149669.762	-5.470	-40693.809	7.134	222595.135230	-1067744.082108	61-20-49	89-56-41	3.645
36-25	-149668.014	8.966	-40690.610	-0.736	-364832.009260	110155.658304	331-24-08	90-03-19	8.221
36-46	-149660.796	5.470	-40694.545	-7.134	-222599.161150	1067680.118664	241-20-49	89-56-41	3.645
36-45K	-149662.544	-8.966	-40697.744	0.736	364895.972704	-110151.632384	151-24-08	90-03-19	8.221
合計				倍面積 面積	59.937524 29.96	-59.937524 29.96			23.732

面積 (座標法) 計算書

地番 = 36-17

測点名	[1] X (i)	[2] X (i+1)-X (i-1)	[3] Y (i)	[4] Y (i+1)-Y (i-1)	[2] * [3]	[1] * [4]	方向角	夾角	距離
36-45K	-149662.544	1.536	-40697.744	-14.333	-62511.734784	2145113.243152	241-20-44	89-56-36	11.849
36-27	-149668.226	-12.012	-40708.142	-6.897	488986.201704	1032261.754722	151-03-14	89-42-30	7.234
36-8	-149674.556	-6.699	-40704.641	4.910	272680.390059	-734902.069960	104-40-32	133-37-18	1.457
36-6	-149674.925	1.024	-40703.232	3.962	-41680.109568	-593012.052850	61-22-54	136-42-22	2.908
36-5	-149673.532	2.523	-40700.679	4.590	-102687.813117	-687001.511880	60-58-52	179-35-58	2.329
36-100	-149672.402	3.770	-40698.642	6.870	-153433.880340	-1028249.401740	61-21-17	180-22-25	5.507
36-26K	-149669.762	9.858	-40693.809	0.898	-401159.569122	-134403.446276	331-24-08	90-02-51	8.221
合計				倍面積 面積	193.484832 96.74	-193.484832 96.74			39.505

面積 (座標法) 計算書

地番 = 36-18

測点名	[1] X (i)	[2] X (i+1)-X (i-1)	[3] Y (i)	[4] Y (i+1)-Y (i-1)	[2] * [3]	[1] * [4]	方向角	夾角	距離
36-28K	-149667.023	-8.634	-40708.802	-12.938	351479.796468	1936391.943574	151-14-58	89-54-18	1.372
36-27	-149668.226	6.227	-40708.142	14.257	-253489.600234	-2133819.898082	61-20-45	90-05-47	15.495
36-46	-149660.796	8.634	-40694.545	12.938	-351356.701530	-1936311.378648	331-18-23	89-57-38	1.373
36-47K	-149659.592	-6.227	-40695.204	-14.257	253409.035308	2133696.803144	241-20-40	90-02-17	15.496
合計				倍面積 面積	42.530012 21.26	-42.530012 21.26			33.736

面積 (座標法) 計算書

地番 = 36-19

測点名	[1] X (i)	[2] X (i+1)-X (i-1)	[3] Y (i)	[4] Y (i+1)-Y (i-1)	[2] * [3]	[1] * [4]	方向角	夾角	距離
36-47K	-149659.592	21.226	-40695.204	6.043	-863796.400104	-904392.914456	331-17-32	89-56-52	15.728
36-44	-149645.797	6.355	-40702.759	-21.160	-258666.033445	3166505.064520	241-19-39	90-02-07	15.506
36-29	-149653.237	-21.226	-40716.364	-6.043	864245.542264	904354.511191	151-15-14	89-55-35	15.724
36-28K	-149667.023	-6.355	-40708.802	21.160	258704.436710	-3166954.206680	61-20-40	90-05-26	15.496
合計				倍面積 面積	487.545425 243.77	-487.545425 243.77			62.454

面積 (座標法) 計算書

地番 = 36-20

測点名	[1] X (i)	[2] X (i+1)-X (i-1)	[3] Y (i)	[4] Y (i+1)-Y (i-1)	[2] * [3]	[1] * [4]	方向角	夾角	距離
36-57	-149633.868	-27.022	-40719.858	-10.525	1100332.002876	1574896.460700	151-19-55	89-58-22	18.671
36-56K	-149650.250	-11.929	-40710.901	17.099	485640.338029	-2558869.624750	61-19-30	89-59-35	9.280
36-44	-149645.797	10.632	-40702.759	19.464	-432751.733688	-2912705.792808	61-22-35	180-03-05	12.898
36-31	-149639.618	22.569	-40691.437	2.383	-918365.041653	-356591.209694	331-23-32	90-00-57	18.669
36-11	-149623.228	5.750	-40700.376	-28.421	-234027.162000	4252441.762988	241-21-33	89-58-01	22.198
合計				倍面積 面積	828.403564 414.20	-828.403564 414.20			81.716

面積 (座標法) 計算書

地番 = 36-21

測点名	[1] X (i)	[2] X (i+1)-X (i-1)	[3] Y (i)	[4] Y (i+1)-Y (i-1)	[2] * [3]	[1] * [4]	方向角	夾角	距離
36-21K	-149640.807	-14.826	-40640.831	11.493	602540.960406	-1719821.794851	61-18-43	89-52-25	3.006
36-53	-149639.364	17.709	-40638.194	-6.217	-719661.777546	930307.925988	331-26-22	90-07-39	18.520
36-54	-149623.098	14.826	-40647.048	-11.493	-602633.133648	1719618.265314	241-22-49	89-56-27	3.006
36-40K	-149624.538	-17.709	-40649.687	6.217	719865.307083	-930215.752746	151-26-18	90-03-29	18.523
合計				倍面積 面積	111.356295 55.67	-111.356295 55.67			43.055

面積 (座標法) 計算書

地番 = 36-22

測点名	[1] X (i)	[2] X (i+1)-X (i-1)	[3] Y (i)	[4] Y (i+1)-Y (i-1)	[2] * [3]	[1] * [4]	方向角	夾角	距離
36-73K	-149631.548	15.957	-40670.361	-17.287	-648976.950477	2586680.570276	241-23-09	90-00-38	7.530
36-72	-149635.154	-23.170	-40676.971	4.067	942485.418070	-608566.171318	151-22-36	89-59-27	22.288
36-24	-149654.718	-15.957	-40666.294	17.287	648912.053358	-2587081.110066	61-22-45	90-00-09	7.530
36-71K	-149651.111	23.170	-40659.684	-4.067	-942084.878280	608631.068437	331-22-31	89-59-46	22.287
合計				倍面積 面積	335.642671 167.82	-335.642671 167.82			59.635

面積 (座標法) 計算書

地番 = 36-24
測点名

	[1] X (i)	[2] X (i+1)-X (i-1)	[3] Y (i)	[4] Y (i+1)-Y (i-1)	[2] * [3]	[1] * [4]	方向角	夾角	距離
36-76	-149661.440	-15.501	-40678.584	24.411	630558.730584	-3653385.411840	61-19-25	89-55-58	14.008
36-24	-149654.718	26.286	-40666.294	1.613	-1068954.204084	-241393.060134	331-22-36	90-03-11	22.288
36-72	-149635.154	22.220	-40676.971	-12.139	-903842.295620	1816421.134406	331-10-10	179-47-34	3.032
36-33	-149632.498	-4.063	-40678.433	-13.734	165276.473279	2055052.727532	241-17-56	90-07-46	13.991
36-77K	-149639.217	-28.942	-40690.705	-0.151	1177670.384110	22595.521767	151-23-27	90-05-31	25.314
合計				倍面積 面積	709.088269 354.54	-709.088269 354.54			78.633

面積 (座標法) 計算書

地番 = 36-25
測点名

	[1] X (i)	[2] X (i+1)-X (i-1)	[3] Y (i)	[4] Y (i+1)-Y (i-1)	[2] * [3]	[1] * [4]	方向角	夾角	距離
36-78K	-149604.689	22.149	-40666.421	-12.518	-900720.558729	1872751.496902	241-19-44	89-57-11	0.377
36-16	-149604.870	-22.511	-40666.752	11.856	915449.254272	-1773715.338720	151-22-33	90-02-49	25.439
36-38K	-149627.200	-22.149	-40654.565	12.518	900457.960185	-1873033.289600	61-19-44	89-57-11	0.377
36-79K	-149627.019	22.511	-40654.234	-11.856	-915167.461574	1773977.937264	331-22-33	90-02-49	25.439
合計				倍面積 面積	19.194154 9.59	-19.194154 9.59			51.632