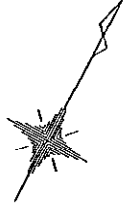
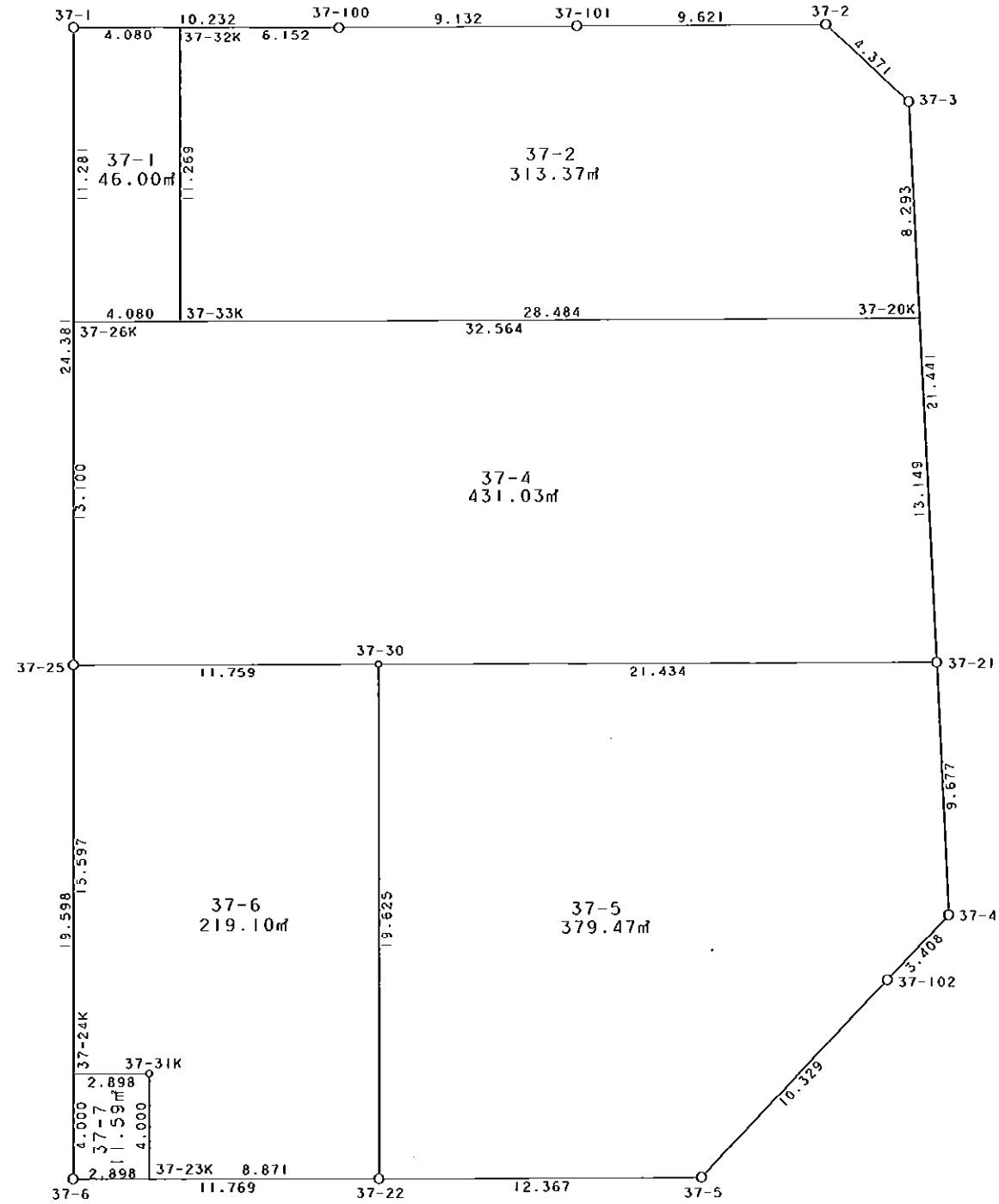


西部第4地区土地区画整理事業 出来形確認測量 (原子図)

37街区



S = 1 / 250



凡 例

記号	名称
⊙	地区界点
○	街区点
○	画地点(折れ点)
┆	画地点(直線中)

面積 (座標法) 計算書

地番 = 37街区

測点名	[1] X (i)	[2] X (i+1)-X (i-1)	[3] Y (i)	[4] Y (i+1)-Y (i-1)	[2]*[3]	[1]*[4]	方向角	夾角	距離
37-1	-149594.563	-26.280	-40647.919	2.699	1068227.311320	-403755.725537	151-20-58	89-51-38	24.381
37-25	-149615.959	-38.592	-40636.229	21.090	1568233.349568	-3155400.575310	151-20-14	179-59-16	19.598
37-6	-149633.155	-11.568	-40626.829	19.736	469971.157872	-2953159.947080	61-25-53	90-05-39	11.769
37-22	-149627.527	11.566	-40616.493	21.184	-469770.358038	-3169709.531968	61-18-16	179-52-23	12.367
37-5	-149621.589	15.914	-40605.645	13.526	-646198.234530	-2023781.612814	15-01-35	133-43-19	10.329
37-102	-149611.613	13.265	-40602.967	3.569	-538598.357255	-533963.846797	15-09-28	180-07-53	3.408
37-4	-149608.324	11.562	-40602.076	-4.130	-469441.202712	617882.378120	328-44-45	133-35-17	9.677
37-21	-149600.051	26.576	-40607.097	-16.189	-1079174.209872	2421875.225639	328-36-34	179-51-49	21.441
37-3	-149581.748	19.406	-40618.265	-15.398	-788238.050590	2303259.755704	284-36-53	136-00-19	4.371
37-2	-149580.645	-3.524	-40622.495	-12.665	143153.672380	1894438.868925	241-15-11	136-38-18	9.621
37-101	-149585.272	-9.034	-40630.930	-16.433	367059.821620	2458134.774776	241-08-41	179-53-30	9.132
37-100	-149589.679	-9.291	-40638.928	-16.989	377576.280048	2541379.056531	241-29-20	180-20-39	10.232
合計				倍面積 面積	2801.179811 1400.58	-2801.179811 1400.58			146.326

地番	筆種別	面積	坪数
37-1	筆界	46.00	13.91
37-2	筆界	313.37	94.79
37-4	筆界	431.03	130.38
37-5	筆界	379.47	114.79
37-6	筆界	219.10	66.28
37-7	筆界	11.59	3.50
	筆合計	1400.56	423.65

面積 (座標法) 計算書

地番 = 37-1
測点名

	[1] X (i)	[2] X (i+1)-X (i-1)	[3] Y (i)	[4] Y (i+1)-Y (i-1)	[2] * [3]	[1] * [4]	方向角	夾角	距離
37-32K	-149592.615	7.941	-40644.334	-8.988	-322756.656294	1344538.423620	241-28-53	90-07-55	4.080
37-1	-149594.563	-11.848	-40647.919	1.824	481596.544312	-272860.482912	151-20-58	89-52-05	11.281
37-26K	-149604.463	-7.941	-40642.510	8.988	322742.171910	-1344644.913444	61-18-20	89-57-22	4.080
37-33K	-149602.504	11.848	-40638.931	-1.824	-481490.054488	272874.967296	331-20-58	90-02-38	11.269
合計				倍面積 面積	92.005440 46.00	-92.005440 46.00			30.710

面積 (座標法) 計算書

地番 = 37-2
測点名

	[1] X (i)	[2] X (i+1)-X (i-1)	[3] Y (i)	[4] Y (i+1)-Y (i-1)	[2] * [3]	[1] * [4]	方向角	夾角	距離
37-33K	-149602.504	3.788	-40638.931	30.388	-153940.270628	-4546120.891552	61-18-12	89-57-14	28.484
37-20K	-149588.827	20.756	-40613.946	20.666	-842983.063176	-3091402.698782	328-36-43	87-18-31	8.293
37-3	-149581.748	8.182	-40618.265	-8.549	-332338.644230	1278774.363652	284-36-53	136-00-10	4.371
37-2	-149580.645	-3.524	-40622.495	-12.665	143153.672380	1894438.868925	241-15-11	136-38-18	9.621
37-101	-149585.272	-9.034	-40630.930	-16.433	367059.821620	2458134.774776	241-08-41	179-53-30	9.132
37-100	-149589.679	-7.343	-40638.928	-13.404	298411.648304	2005100.057316	241-29-37	180-20-56	6.152
37-32K	-149592.615	-12.825	-40644.334	-0.003	521263.583550	448.777845	151-20-58	89-51-21	11.269
合計				倍面積 面積	626.747820 313.37	-626.747820 313.37			77.322

面積 (座標法) 計算書

地番 = 37-4
測点名

	[1] X (i)	[2] X (i+1)-X (i-1)	[3] Y (i)	[4] Y (i+1)-Y (i-1)	[2] * [3]	[1] * [4]	方向角	夾角	距離
37-26K	-149604.463	-27.132	-40642.510	-22.283	1102712.581320	3333636.249029	151-20-58	90-02-45	13.100
37-25	-149615.959	-5.849	-40636.229	16.595	237681.303421	-2482876.839605	61-17-56	89-56-58	11.759
37-30	-149610.312	15.908	-40625.915	29.132	-646277.055820	-4358447.609184	61-23-51	180-05-55	21.434
37-21	-149600.051	21.485	-40607.097	11.969	-872443.479045	-1790563.010419	328-36-29	87-12-38	13.149
37-20K	-149588.827	-4.412	-40613.946	-35.413	179188.729752	5297389.130551	241-18-13	92-41-44	32.564
合計				倍面積 面積	862.079628 431.03	-862.079628 431.03			92.006

面積 (座標法) 計算書

地番 = 37-5
測点名

	[1] X (i)	[2] X (i+1)-X (i-1)	[3] Y (i)	[4] Y (i+1)-Y (i-1)	[2] * [3]	[1] * [4]	方向角	夾角	距離
37-30	-149610.312	-27.476	-40625.915	-9.396	1116237.640540	1405738.491552	151-18-27	89-54-36	19.625
37-22	-149627.527	-11.277	-40616.493	20.270	458032.191561	-3032949.972290	61-18-16	89-59-49	12.367
37-5	-149621.589	15.914	-40605.645	13.526	-646198.234530	-2023781.612814	15-01-35	133-43-19	10.329
37-102	-149611.613	13.265	-40602.967	3.569	-538598.357255	-533963.846797	15-09-28	180-07-53	3.408
37-4	-149608.324	11.562	-40602.076	-4.130	-469441.202712	617882.378120	328-44-45	133-35-17	9.677
37-21	-149600.051	-1.988	-40607.097	-23.839	80726.908836	3566315.615789	241-23-51	92-39-06	21.434
合計				倍面積 面積	758.946440 379.47	-758.946440 379.47			76.840

面積 (座標法) 計算書

地番 = 37-6
測点名

	[1] X (i)	[2] X (i+1)-X (i-1)	[3] Y (i)	[4] Y (i+1)-Y (i-1)	[2] * [3]	[1] * [4]	方向角	夾角	距離
37-25	-149615.959	-19.333	-40636.229	-2.833	785620.215257	423862.011847	151-20-18	90-02-22	15.597
37-24K	-149629.645	-12.300	-40628.748	10.026	499733.600400	-1500186.820770	61-25-39	90-05-21	2.898
37-31K	-149628.259	-2.124	-40626.203	4.464	86290.055172	-667940.548176	151-20-01	269-54-22	4.000
37-23K	-149631.769	0.732	-40624.284	9.710	-29736.975888	-1452924.476990	61-25-58	90-05-57	8.871
37-22	-149627.527	21.457	-40616.493	-1.631	-871508.090301	244042.496537	331-18-27	89-52-29	19.625
37-30	-149610.312	11.568	-40625.915	-19.736	-469960.584720	2952709.117632	241-17-56	89-59-29	11.759
合計				倍面積 面積	438.219920 219.10	-438.219920 219.10			62.750

面積 (座標法) 計算書

地番 = 37-7
測点名

	[1] X (i)	[2] X (i+1)-X (i-1)	[3] Y (i)	[4] Y (i+1)-Y (i-1)	[2] * [3]	[1] * [4]	方向角	夾角	距離
37-31K	-149628.259	2.124	-40626.203	-4.464	-86290.055172	667940.548176	241-25-39	90-05-38	2.898
37-24K	-149629.645	-4.896	-40628.748	-0.626	198918.350208	93668.157770	151-20-01	89-54-22	4.000
37-6	-149633.155	-2.124	-40626.829	4.464	86291.384796	-667962.403920	61-25-39	90-05-38	2.898
37-23K	-149631.769	4.896	-40624.284	0.626	-198896.494464	-93669.487394	331-20-01	89-54-22	4.000
合計				倍面積 面積	23.185368 11.59	-23.185368 11.59			13.796