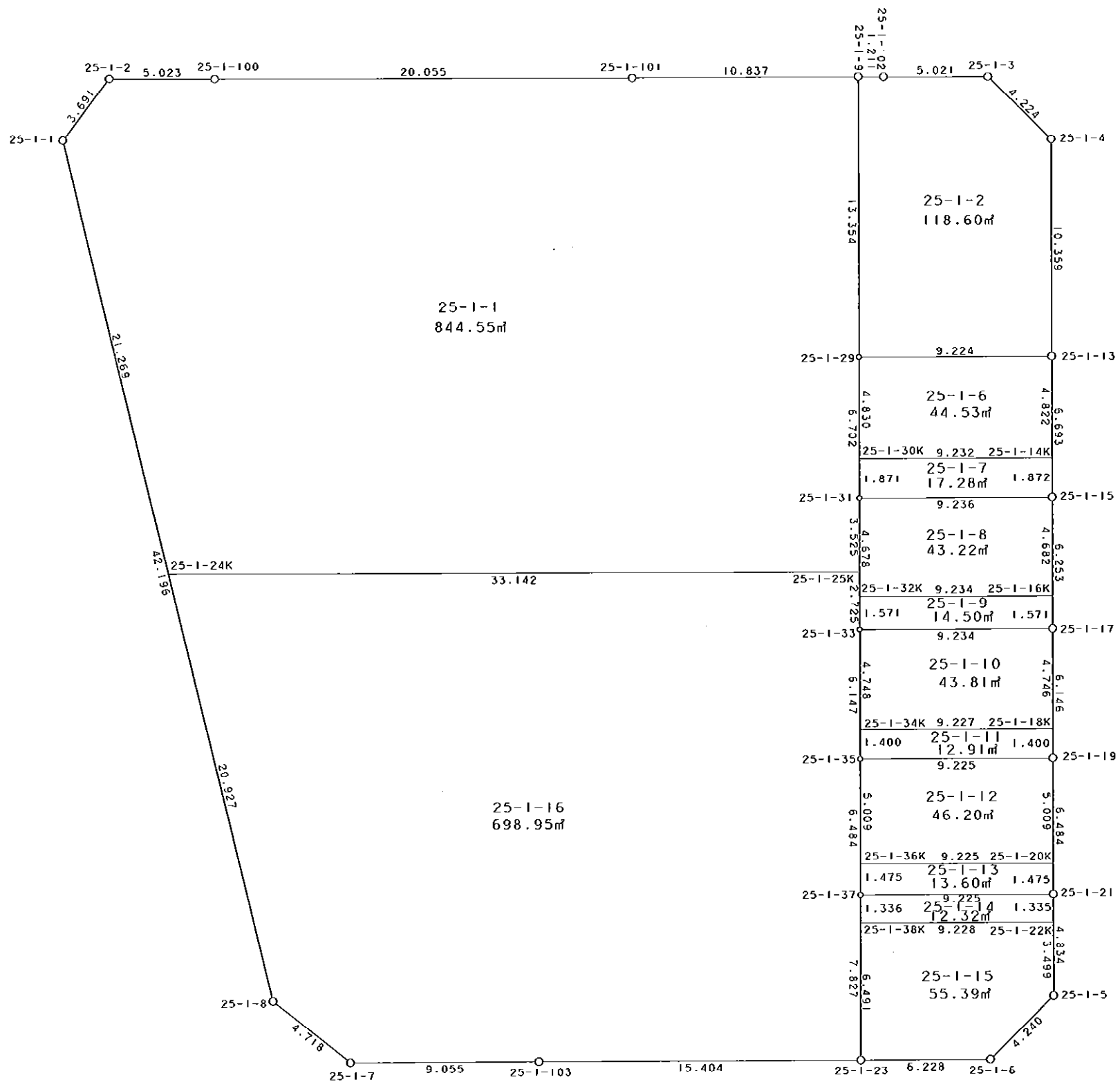


西部第4地区土地区画整理事業 出来形確認測量 (原子図)

25-1街区



S = 1 / 250



凡 例

記号	名称
⊙	地区界点
○	街区点
○	画地点(折れ点)
┆	画地点(直線中)

面積 (座標法) 計算書

地番 = 25-1街区

測点名	[1] X (i)	[2] X (i+1)-X (i-1)	[3] Y (i)	[4] Y (i+1)-Y (i-1)	[2] * [3]	[1] * [4]	方向角	夾 角	距 離
25-1-2	-149535.349	-3.272	-40941.937	-7.121	133962.017864	1064841.220229	214-45-29	127-29-49	3.691
25-1-1	-149538.381	-43.460	-40944.041	9.984	1779428.021860	-1492991.195904	163-21-12	128-35-43	42.196
25-1-8	-149578.809	-43.133	-40931.953	15.953	1765517.928749	-2386230.739977	124-59-13	141-38-01	4.718
25-1-7	-149581.514	-2.222	-40928.088	12.907	90942.211536	-1930648.601198	86-56-32	141-57-19	9.055
25-1-103	-149581.031	1.276	-40919.046	24.426	-52212.702696	-3653666.263206	87-02-57	180-06-25	15.404
25-1-23	-149580.238	1.124	-40903.662	21.603	-45975.716088	-3231381.881514	86-57-12	179-54-15	6.228
25-1-6	-149579.907	3.467	-40897.443	9.073	-141791.434881	-1357138.496211	42-18-17	135-21-05	4.240
25-1-5	-149576.771	7.963	-40894.589	2.601	-325643.612207	-389049.181371	356-59-59	134-41-42	4.834
25-1-21	-149571.944	11.302	-40894.842	-0.585	-462193.504284	87499.587240	357-03-53	180-03-54	6.484
25-1-19	-149565.469	12.613	-40895.174	-0.645	-515810.829662	96469.727505	357-04-51	180-00-58	6.146
25-1-17	-149559.331	12.383	-40895.487	-0.631	-506408.815521	94371.937861	357-05-06	180-00-15	6.253
25-1-15	-149553.086	12.929	-40895.805	-0.672	-528741.862845	100499.673792	356-58-06	179-53-00	6.693
25-1-13	-149546.402	17.029	-40896.159	-0.888	-696420.691611	132797.204976	357-02-42	180-04-36	10.359
25-1-4	-149536.057	13.159	-40896.693	-3.684	-538159.583187	550890.833988	311-46-32	134-43-50	4.224
25-1-3	-149533.243	2.570	-40899.843	-8.165	-105112.596510	1220938.929095	267-12-52	135-26-20	5.021
25-1-102	-149533.487	-0.294	-40904.858	-6.225	12026.028252	930845.956575	267-38-02	180-25-10	1.211
25-1-9	-149533.537	-0.612	-40906.068	-12.032	25034.513616	1799187.517184	267-01-38	179-23-36	10.837
25-1-101	-149534.099	-1.572	-40916.890	-30.852	64321.351080	4613426.022348	267-06-48	180-05-10	20.055
25-1-100	-149535.109	-1.250	-40936.920	-25.047	51171.150000	3745405.875123	267-15-40	180-08-52	5.023
合計				倍面積 面積	3931.873465 1965.93	-3931.873465 1965.93			172.672

地番	筆種別	面積	坪数
25-1-1	筆界	844.55	255.47
25-1-2	筆界	118.60	35.87
25-1-6	筆界	44.53	13.47
25-1-7	筆界	17.28	5.22
25-1-8	筆界	43.22	13.07
25-1-9	筆界	14.50	4.38
25-1-10	筆界	43.81	13.25
25-1-11	筆界	12.91	3.90
25-1-12	筆界	46.20	13.97
25-1-13	筆界	13.60	4.11
25-1-14	筆界	12.32	3.72
25-1-15	筆界	55.39	16.75
25-1-16	筆界計	698.95	211.43
	合	1965.86	594.61

面積 (座標法) 計算書

地番 = 25-1-1

測点名	[1] X (i)	[2] X (i+1)-X (i-1)	[3] Y (i)	[4] Y (i+1)-Y (i-1)	[2] * [3]	[1] * [4]	方向角	夾角	距離
25-1-25K	-149557.086	5.193	-40904.848	32.919	-212418.875664	-4923269.714034	357-03-23	89-57-00	3.525
25-1-31	-149553.566	10.213	-40905.029	-0.523	-417763.061177	78216.515018	357-04-29	180-01-06	6.702
25-1-29	-149546.873	20.029	-40905.371	-1.039	-819293.675759	155379.201047	357-00-29	179-56-00	13.354
25-1-9	-149533.537	12.774	-40906.068	-11.519	-522534.112632	1722476.812703	267-01-38	90-01-09	10.837
25-1-101	-149534.099	-1.572	-40916.890	-30.852	64321.351080	4613426.022348	267-06-48	180-05-10	20.055
25-1-100	-149535.109	-1.250	-40936.920	-25.047	51171.150000	3745405.875123	267-15-40	180-08-52	5.023
25-1-2	-149535.349	-3.272	-40941.937	-7.121	133962.017864	1064841.220229	214-45-29	127-29-49	3.691
25-1-1	-149538.381	-23.410	-40944.041	3.989	958499.999810	-596508.601809	163-21-12	128-35-43	21.269
25-1-24K	-149558.759	-18.705	-40937.948	39.193	765744.317340	-5861656.441487	87-06-23	103-45-11	33.142
合計				倍面積 面積	1689.110862 844.55	-1689.110862 844.55			117.598

面積 (座標法) 計算書

地番 = 25-1-2

測点名	[1] X (i)	[2] X (i+1)-X (i-1)	[3] Y (i)	[4] Y (i+1)-Y (i-1)	[2] * [3]	[1] * [4]	方向角	夾角	距離
25-1-9	-149533.537	-13.386	-40906.068	-0.513	547568.626248	76710.704481	177-00-29	89-22-27	13.354
25-1-29	-149546.873	-12.865	-40905.371	9.909	526247.597915	-1481859.964557	87-04-23	90-03-54	9.224
25-1-13	-149546.402	10.816	-40896.159	8.678	-442332.855744	-1297763.676556	357-02-42	89-58-19	10.359
25-1-4	-149536.057	13.159	-40896.693	-3.684	-538159.583187	550890.833988	311-46-32	134-43-50	4.224
25-1-3	-149533.243	2.570	-40899.843	-8.165	-105112.596510	1220938.929095	267-12-52	135-26-20	5.021
25-1-102	-149533.487	-0.294	-40904.858	-6.225	12026.028252	930845.956575	267-38-02	180-25-10	1.211
合計				倍面積 面積	237.216974 118.60	-237.216974 118.60			43.393

面積 (座標法) 計算書

地番 = 25-1-6

測点名	[1] X (i)	[2] X (i+1)-X (i-1)	[3] Y (i)	[4] Y (i+1)-Y (i-1)	[2] * [3]	[1] * [4]	方向角	夾角	距離
25-1-14K	-149551.217	5.295	-40895.904	8.965	-216543.811680	-1340726.660405	356-58-07	89-56-56	4.822
25-1-13	-149546.402	4.344	-40896.159	-9.467	-177652.914696	1415755.787734	267-04-23	90-06-16	9.224
25-1-29	-149546.873	-5.295	-40905.371	-8.965	216593.939445	1340687.716445	177-04-08	89-59-45	4.830
25-1-30K	-149551.697	-4.344	-40905.124	9.467	177691.858656	-1415805.915499	87-01-11	89-57-03	9.232
合計				倍面積 面積	89.071725 44.53	-89.071725 44.53			28.108

面積 (座標法) 計算書

地番 = 25-1-7

測点名	[1] X (i)	[2] X (i+1)-X (i-1)	[3] Y (i)	[4] Y (i+1)-Y (i-1)	[2] * [3]	[1] * [4]	方向角	夾角	距離
25-1-30K	-149551.697	-2.349	-40905.124	-9.125	96086.136276	1364659.235125	177-05-25	90-04-14	1.871
25-1-31	-149553.566	-1.389	-40905.029	9.319	56817.085281	-1393689.681554	87-01-16	89-55-51	9.236
25-1-15	-149553.086	2.349	-40895.805	9.125	-96064.245945	-1364671.909750	356-58-04	89-56-48	1.872
25-1-14K	-149551.217	1.389	-40895.904	-9.319	-56804.410656	1393667.791223	267-01-11	90-03-07	9.232
合計				倍面積 面積	34.564956 17.28	-34.564956 17.28			22.211

面積 (座標法) 計算書

地番 = 25-1-8

測点名	[1] X (i)	[2] X (i+1)-X (i-1)	[3] Y (i)	[4] Y (i+1)-Y (i-1)	[2] * [3]	[1] * [4]	方向角	夾角	距離
25-1-16K	-149557.762	5.152	-40895.567	8.984	-210693.961184	-1343626.933808	357-05-11	90-02-28	4.682
25-1-15	-149553.086	4.196	-40895.805	-9.462	-171598.797780	1415071.299732	267-01-16	89-56-05	9.236
25-1-31	-149553.566	-5.152	-40905.029	-8.984	210742.709408	1343589.236944	177-03-34	90-02-18	4.678
25-1-32K	-149558.238	-4.196	-40904.789	9.462	171636.494644	-1415120.047956	87-02-43	89-59-09	9.234
合計				倍面積 面積	86.445088 43.22	-86.445088 43.22			27.830

面積 (座標法) 計算書

地番 = 25-1-9

測点名	[1] X (i)	[2] X (i+1)-X (i-1)	[3] Y (i)	[4] Y (i+1)-Y (i-1)	[2] * [3]	[1] * [4]	方向角	夾角	距離
25-1-32K	-149558.238	-2.045	-40904.789	-9.142	83650.293505	1367261.411796	177-04-52	90-02-09	1.571
25-1-33	-149559.807	-1.093	-40904.709	9.302	44708.846937	-1391205.324714	87-02-43	89-57-51	9.234
25-1-17	-149559.331	2.045	-40895.487	9.142	-83631.270915	-1367271.404002	357-04-52	90-02-09	1.571
25-1-16K	-149557.762	1.093	-40895.567	-9.302	-44698.854731	1391186.302124	267-02-43	89-57-51	9.234
合計				倍面積 面積	29.014796 14.50	-29.014796 14.50			21.610

面積 (座標法) 計算書

地番 = 25-1-10

測点名	[1] X (i)	[2] X (i+1)-X (i-1)	[3] Y (i)	[4] Y (i+1)-Y (i-1)	[2] * [3]	[1] * [4]	方向角	夾角	距離
25-1-18K	-149564.071	5.217	-40895.245	8.973	-213350.493165	-1342038.409083	357-04-38	90-02-25	4.746
25-1-17	-149559.331	4.264	-40895.487	-9.464	-174378.356568	1415429.508584	267-02-43	89-58-05	9.234
25-1-33	-149559.807	-5.217	-40904.709	-8.973	213399.866853	1342000.148211	176-59-37	89-56-54	4.748
25-1-34K	-149564.548	-4.264	-40904.460	9.464	174416.617440	-1415478.882272	87-02-13	90-02-36	9.227
合計				倍面積 面積	87.634560 43.81	-87.634560 43.81			27.955

面積 (座標法) 計算書

地番 = 25-1-11

測点名	[1] X (i)	[2] X (i+1)-X (i-1)	[3] Y (i)	[4] Y (i+1)-Y (i-1)	[2] * [3]	[1] * [4]	方向角	夾角	距離
25-1-34K	-149564.548	-1.875	-40904.460	-9.142	76695.862500	1367319.097816	177-00-39	89-58-26	1.400
25-1-35	-149565.946	-0.921	-40904.387	9.286	37672.940427	-1388869.374556	87-02-10	90-01-31	9.225
25-1-19	-149565.469	1.875	-40895.174	9.142	-76678.451250	-1367327.517598	357-05-33	90-03-23	1.400
25-1-18K	-149564.071	0.921	-40895.245	-9.286	-37664.520645	1388851.963306	267-02-13	89-56-40	9.227
合計				倍面積 面積	25.831032 12.91	-25.831032 12.91			21.252

面積 (座標法) 計算書

地番 = 25-1-12

測点名	[1] X (i)	[2] X (i+1)-X (i-1)	[3] Y (i)	[4] Y (i+1)-Y (i-1)	[2] * [3]	[1] * [4]	方向角	夾角	距離
25-1-20K	-149570.471	5.479	-40894.918	8.957	-224063.255722	-1339702.708747	357-04-13	90-02-03	5.009
25-1-19	-149565.469	4.525	-40895.174	-9.469	-185050.662350	1416235.425961	267-02-10	89-57-57	9.225
25-1-35	-149565.946	-5.479	-40904.387	-8.957	224115.136373	1339662.178322	177-04-13	90-02-03	5.009
25-1-36K	-149570.948	-4.525	-40904.131	9.469	185091.192775	-1416287.306612	87-02-10	89-57-57	9.225
合計				倍面積 面積	92.411076 46.20	-92.411076 46.20			28.468

面積 (座標法) 計算書

地番 = 25-1-13

測点名	[1] X (i)	[2] X (i+1)-X (i-1)	[3] Y (i)	[4] Y (i+1)-Y (i-1)	[2] * [3]	[1] * [4]	方向角	夾角	距離
25-1-36K	-149570.948	-1.950	-40904.131	-9.137	79763.055450	1366629.751876	177-02-47	90-00-37	1.475
25-1-37	-149572.421	-0.996	-40904.055	9.289	40740.438780	-1389378.218669	87-02-10	89-59-23	9.225
25-1-21	-149571.944	1.950	-40894.842	9.137	-79744.941900	-1366638.852328	357-02-47	90-00-37	1.475
25-1-20K	-149570.471	0.996	-40894.918	-9.289	-40731.338328	1389360.105119	267-02-10	89-59-23	9.225
合計				倍面積 面積	27.214002 13.60	-27.214002 13.60			21.400

面積 (座標法) 計算書

地番 = 25-1-14

測点名	[1] X (i)	[2] X (i+1)-X (i-1)	[3] Y (i)	[4] Y (i+1)-Y (i-1)	[2] * [3]	[1] * [4]	方向角	夾角	距離
25-1-22K	-149573.277	1.811	-40894.772	9.146	-74060.432092	-1367997.191442	356-59-38	89-57-47	1.335
25-1-21	-149571.944	0.856	-40894.842	-9.283	-35005.984752	1388476.356152	267-02-10	90-02-32	9.225
25-1-37	-149572.421	-1.811	-40904.055	-9.146	74077.243605	1367989.362466	177-07-29	90-05-19	1.336
25-1-38K	-149573.755	-0.856	-40903.988	9.283	35013.813728	-1388493.167665	87-01-51	89-54-22	9.228
合計				倍面積 面積	24.640489 12.32	-24.640489 12.32			21.124

面積 (座標法) 計算書

地番 = 25-1-15

測点名	[1] X (i)	[2] X (i+1)-X (i-1)	[3] Y (i)	[4] Y (i+1)-Y (i-1)	[2] * [3]	[1] * [4]	方向角	夾角	距離
25-1-38K	-149573.755	-6.961	-40903.988	-8.890	284732.660468	1329710.681950	177-07-17	90-05-26	6.491
25-1-23	-149580.238	-6.152	-40903.662	6.545	251639.328624	-979002.657710	86-57-12	89-49-55	6.228
25-1-6	-149579.907	3.467	-40897.443	9.073	-141791.434881	-1357138.496211	42-18-17	135-21-05	4.240
25-1-5	-149576.771	6.630	-40894.589	2.671	-271131.125070	-399519.555341	357-00-07	134-41-50	3.499
25-1-22K	-149573.277	3.016	-40894.772	-9.399	-123338.632352	1405839.230523	267-01-51	90-01-44	9.228
合計				倍面積 面積	110.796789 55.39	-110.796789 55.39			29.686

面積 (座標法) 計算書

地番 = 25-1-16

測点名	[1] X (i)	[2] X (i+1)-X (i-1)	[3] Y (i)	[4] Y (i+1)-Y (i-1)	[2] * [3]	[1] * [4]	方向角	夾角	距離
25-1-24K	-149558.759	-21.723	-40937.948	-27.105	889295.044404	4053790.162695	163-21-12	76-14-49	20.927
25-1-8	-149578.809	-22.755	-40931.953	9.860	931406.590515	-1474847.056740	124-59-13	141-38-01	4.718
25-1-7	-149581.514	-2.222	-40928.088	12.907	90942.211536	-1930648.601198	86-56-32	141-57-19	9.055
25-1-103	-149581.031	1.276	-40919.046	24.426	-52212.702696	-3653666.263206	87-02-57	180-06-25	15.404
25-1-23	-149580.238	8.610	-40903.662	14.991	-352180.529820	-2242357.347858	357-07-19	90-04-22	7.827
25-1-37	-149572.421	14.292	-40904.055	-0.725	-584600.754060	108440.005225	357-03-53	179-56-34	6.484
25-1-35	-149565.946	12.614	-40904.387	-0.654	-515967.937618	97816.128684	356-59-51	179-55-58	6.147
25-1-33	-149559.807	8.860	-40904.709	-0.461	-362415.721740	68947.071027	357-04-32	180-04-41	2.725
25-1-25K	-149557.086	1.048	-40904.848	-33.239	-42868.280704	4971127.981554	267-06-23	90-01-51	33.142
合計				倍面積 面積	1397.919817 698.95	-1397.919817 698.95			106.429