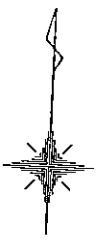
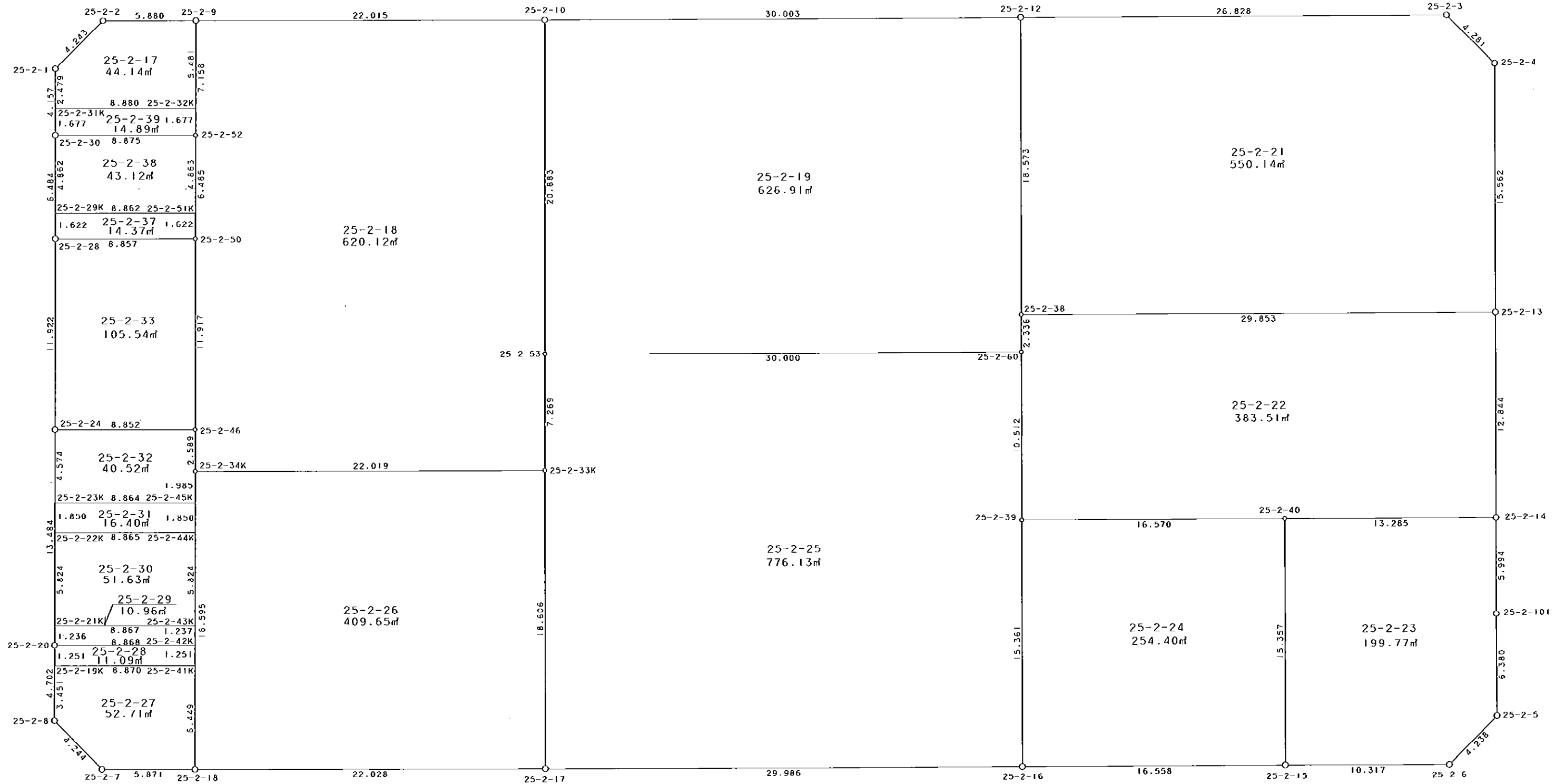


西部第4地区土地区画整理事業 出来形確認測量 (原子図)

25-2街区



S = 1 / 250



凡例

記号	名称
⊙	地区界点
○	街区点
○	画地点(折れ点)
┆	画地点(直線中)

面積 (座標法) 計算書

地番 = 25-2街区

測点名	[1] X (i)	[2] X (i+1)-X (i-1)	[3] Y (i)	[4] Y (i+1)-Y (i-1)	[2] * [3]	[1] * [4]	方向角	夾 角	距 離
25-2-2	-149532.600	-3.449	-40887.867	-8.725	141022.253283	1304671.935000	222-15-30	135-16-14	4.243
25-2-1	-149535.740	-7.291	-40890.720	-2.633	298134.239520	393727.603420	176-57-58	134-42-28	4.157
25-2-30	-149539.891	-10.626	-40890.500	0.559	434502.453000	-83592.799069	177-00-11	180-02-13	6.484
25-2-28	-149546.366	-18.381	-40890.161	0.951	751602.049341	-142218.594066	177-03-27	180-03-16	11.922
25-2-24	-149558.272	-25.372	-40889.549	1.302	1037449.637228	-194724.870144	177-04-00	180-00-33	13.484
25-2-20	-149571.738	-18.162	-40888.859	0.927	742623.457158	-138653.001126	177-06-39	180-02-39	4.702
25-2-8	-149576.434	-7.535	-40888.622	3.391	308095.766770	-507213.687694	131-59-28	134-52-49	4.244
25-2-7	-149579.273	-2.540	-40885.468	9.017	103849.088720	-1348756.304641	87-04-50	135-05-22	5.871
25-2-18	-149578.974	1.427	-40879.605	27.862	-58335.196335	-4167569.373588	87-03-53	179-59-03	22.028
25-2-17	-149577.846	2.666	-40857.606	51.946	-108926.377596	-7769970.788316	87-03-36	179-59-43	29.986
25-2-16	-149576.308	2.392	-40827.659	46.483	-97659.760328	-6952755.524764	87-02-37	179-59-01	16.558
25-2-15	-149575.454	1.374	-40811.123	26.840	-56074.483002	-4014605.185360	87-06-39	180-04-02	10.317
25-2-6	-149574.934	3.665	-40800.819	13.145	-149535.001635	-1966162.507430	42-05-34	134-58-55	4.238
25-2-5	-149571.789	9.515	-40797.978	2.487	-388192.760670	-371985.039243	356-49-09	134-43-35	6.380
25-2-101	-149565.419	12.356	-40798.332	-0.654	-504104.190192	97815.784026	357-07-51	180-18-42	5.994
25-2-14	-149559.433	18.813	-40798.632	-0.953	-767544.663816	142530.139649	357-05-08	179-57-17	12.844
25-2-13	-149546.606	28.369	-40799.285	-1.441	-1157434.916165	215496.659246	357-05-51	180-00-43	15.562
25-2-4	-149531.064	18.405	-40800.073	-3.971	-750925.343565	593787.855144	311-58-13	134-52-22	4.281
25-2-3	-149528.201	1.478	-40803.256	-29.975	-60307.212368	4482107.824975	267-02-27	135-04-14	26.828
25-2-12	-149529.586	-2.948	-40830.048	-56.754	120366.981504	8486402.123844	267-00-50	179-58-23	30.003
25-2-10	-149531.149	-2.705	-40860.010	-51.947	110526.327050	7767694.597103	267-01-35	180-00-45	22.015
25-2-9	-149532.291	-1.451	-40881.995	-27.857	59319.774745	4165521.030387	266-59-16	179-57-41	5.880
合計				倍面積 面積	8452.122647 4226.06	-8452.122647 4226.06			268.021

地番	筆種別	面積	坪数
25-2-17	筆界	44.14	13.35
25-2-18	筆界	620.12	187.58
25-2-19	筆界	626.91	189.64
25-2-21	筆界	550.14	166.41
25-2-22	筆界	383.51	116.01
25-2-23	筆界	199.77	60.43
25-2-24	筆界	254.40	76.95
25-2-25	筆界	776.13	234.78
25-2-26	筆界	409.65	123.91
25-2-27	筆界	52.71	15.94
25-2-28	筆界	11.09	3.35
25-2-29	筆界	10.96	3.31
25-2-30	筆界	51.63	15.61
25-2-31	筆界	16.40	4.96
25-2-32	筆界	40.52	12.25
25-2-33	筆界	105.54	31.92
25-2-37	筆界	14.37	4.34
25-2-38	筆界	43.12	13.04
25-2-39	筆界	14.89	4.50
	合	4226.00	1278.28

面積 (座標法) 計算書

地番 = 25-2-17

測点名	[1] X (i)	[2] X (i+1)-X (i-1)	[3] Y (i)	[4] Y (i+1)-Y (i-1)	[2] * [3]	[1] * [4]	方向角	夾角	距離
25-2-32K	-149537.765	5.925	-40881.720	8.594	-242224.191000	-1285127.552410	357-07-26	90-02-06	5.481
25-2-9	-149532.291	5.165	-40881.995	-6.147	-211155.504175	919174.992777	266-59-16	89-51-50	5.880
25-2-2	-149532.600	-3.449	-40887.867	-8.725	141022.253283	1304671.935000	222-15-30	135-16-14	4.243
25-2-1	-149535.740	-5.616	-40890.720	-2.722	229642.283520	407036.284280	176-58-17	134-42-47	2.479
25-2-31K	-149538.216	-2.025	-40890.589	9.000	82803.442725	-1345843.944000	87-05-20	90-07-03	8.880
合計				倍面積 面積	88.284353 44.14	-88.284353 44.14			26.963

面積 (座標法) 計算書

地番 = 25-2-18

測点名	[1] X (i)	[2] X (i+1)-X (i-1)	[3] Y (i)	[4] Y (i+1)-Y (i-1)	[2] * [3]	[1] * [4]	方向角	夾角	距離
25-2-9	-149532.291	-8.291	-40881.995	-21.626	338952.620545	3233785.325166	177-07-31	90-05-56	7.158
25-2-52	-149539.440	-13.626	-40881.636	0.680	557053.172136	-101686.819200	177-09-46	180-02-15	6.485
25-2-50	-149545.917	-18.379	-40881.315	0.927	751357.688385	-138629.065059	177-05-07	179-55-21	11.917
25-2-46	-149557.819	-14.487	-40880.709	0.750	592238.831283	-112168.364250	176-48-42	179-43-35	2.589
25-2-34K	-149560.404	-1.446	-40880.565	22.134	59113.296990	-3310369.982136	87-02-06	90-13-24	22.019
25-2-33K	-149559.265	8.399	-40858.575	21.625	-343171.171425	-3234219.105625	357-07-19	90-05-13	7.269
25-2-53	-149552.005	28.116	-40858.940	-1.435	-1148789.957040	214607.127175	357-03-47	179-56-28	20.883
25-2-10	-149531.149	19.714	-40860.010	-23.055	-805514.237140	3447440.640195	267-01-35	89-57-48	22.015
合計				倍面積 面積	1240.243734 620.12	-1240.243734 620.12			100.335

面積 (座標法) 計算書

地番 = 25-2-19

測点名	[1] X (i)	[2] X (i+1)-X (i-1)	[3] Y (i)	[4] Y (i+1)-Y (i-1)	[2] * [3]	[1] * [4]	方向角	夾角	距離
25-2-10	-149531.149	-22.419	-40860.010	-28.892	916040.564190	4320253.956908	177-03-47	90-02-57	20.883
25-2-53	-149552.005	-19.319	-40858.940	31.031	789353.861860	-4640748.267155	87-03-48	90-00-01	30.000
25-2-60	-149550.468	3.870	-40828.979	29.841	-158008.148730	-4462735.515588	357-03-20	89-59-32	2.336
25-2-38	-149548.135	20.882	-40829.099	-1.069	-852593.245318	159866.956315	357-04-16	180-00-56	18.573
25-2-12	-149529.586	16.986	-40830.048	-30.911	-693539.195328	4622109.032846	267-00-50	89-56-34	30.003
合計				倍面積 面積	1253.836674 626.91	-1253.836674 626.91			101.795

面積 (座標法) 計算書

地番 = 25-2-21

測点名	[1] X (i)	[2] X (i+1)-X (i-1)	[3] Y (i)	[4] Y (i+1)-Y (i-1)	[2] * [3]	[1] * [4]	方向角	夾角	距離
25-2-12	-149529.586	-19.934	-40830.048	-25.843	813906.176832	3864293.090998	177-04-16	90-01-49	18.573
25-2-38	-149548.135	-17.020	-40829.099	30.763	694911.264980	-4600549.277005	87-03-51	89-59-35	29.853
25-2-13	-149546.606	17.071	-40799.285	29.026	-696484.594235	-4340739.785756	357-05-51	90-02-00	15.562
25-2-4	-149531.064	18.405	-40800.073	-3.971	-750925.343565	593787.855144	311-58-13	134-52-22	4.281
25-2-3	-149528.201	1.478	-40803.256	-29.975	-60307.212368	4482107.824975	267-02-27	135-04-14	26.828
合計				倍面積 面積	1100.291644 550.14	-1100.291644 550.14			95.097

面積 (座標法) 計算書

地番 = 25-2-22

測点名	[1] X (i)	[2] X (i+1)-X (i-1)	[3] Y (i)	[4] Y (i+1)-Y (i-1)	[2] * [3]	[1] * [4]	方向角	夾角	距離
25-2-38	-149548.135	-3.862	-40829.099	-29.694	157681.980338	4440682.320690	177-03-20	89-59-29	2.336
25-2-60	-149550.468	-12.832	-40828.979	0.652	523917.458528	-97506.905136	177-05-57	180-02-37	10.512
25-2-39	-149560.967	-9.649	-40828.447	17.080	393953.685103	-2554501.316360	87-03-34	89-57-37	16.570
25-2-40	-149560.117	1.534	-40811.899	29.815	-62605.453066	-4459134.888355	87-02-55	179-59-21	13.285
25-2-14	-149559.433	13.511	-40798.632	12.614	-551230.316952	-1886542.687862	357-05-08	90-02-13	12.844
25-2-13	-149546.606	11.298	-40799.285	-30.467	-460950.321930	4556236.445002	267-03-51	89-58-43	29.853
合計				倍面積 面積	767.032021 383.51	-767.032021 383.51			85.400

面積 (座標法) 計算書

地番 = 25-2-23

測点名	[1] X (i)	[2] X (i+1)-X (i-1)	[3] Y (i)	[4] Y (i+1)-Y (i-1)	[2] * [3]	[1] * [4]	方向角	夾角	距離
25-2-40	-149560.117	-16.021	-40811.899	-12.491	653847.433879	1868155.421447	177-06-13	90-03-18	15.357
25-2-15	-149575.454	-14.817	-40811.123	11.080	604698.409491	-1657296.030320	87-06-39	90-00-26	10.317
25-2-6	-149574.934	3.665	-40800.819	13.145	-149535.001635	-1966162.507430	42-05-34	134-58-55	4.238
25-2-5	-149571.789	9.515	-40797.978	2.487	-388192.760670	-371985.039243	356-49-09	134-43-35	6.380
25-2-101	-149565.419	12.356	-40798.332	-0.654	-504104.190192	97815.784026	357-07-51	180-18-42	5.994
25-2-14	-149559.433	5.302	-40798.632	-13.567	-216314.346864	2029072.827511	267-02-55	89-55-04	13.285
合計				倍面積 面積	399.544009 199.77	-399.544009 199.77			55.571

面積 (座標法) 計算書

地番 = 25-2-24

測点名	[1] X (i)	[2] X (i+1)-X (i-1)	[3] Y (i)	[4] Y (i+1)-Y (i-1)	[2] * [3]	[1] * [4]	方向角	夾角	距離
25-2-39	-149560.967	-16.191	-40828.447	-15.760	661053.385377	2357080.839920	177-03-34	90-00-00	15.361
25-2-16	-149576.308	-14.487	-40827.659	17.324	591470.295933	-2591259.959792	87-02-37	89-59-03	16.558
25-2-15	-149575.454	16.191	-40811.123	15.760	-660772.892493	-2357309.155040	357-06-13	90-03-36	15.357
25-2-40	-149560.117	14.487	-40811.899	-17.324	-591241.980813	2590979.466908	267-03-34	89-57-21	16.570
合計				倍面積 面積	508.808004 254.40	-508.808004 254.40			63.846

面積 (座標法) 計算書

地番 = 25-2-25

測点名	[1] X (i)	[2] X (i+1)-X (i-1)	[3] Y (i)	[4] Y (i+1)-Y (i-1)	[2] * [3]	[1] * [4]	方向角	夾角	距離
25-2-53	-149552.005	-8.797	-40858.940	-29.596	359436.095180	4426141.139980	177-07-19	90-03-31	7.269
25-2-33K	-149559.265	-25.841	-40858.575	1.334	1055826.436575	-199512.059510	177-00-53	179-53-34	18.606
25-2-17	-149577.846	-17.043	-40857.606	30.916	696336.179058	-4624348.686936	87-03-36	90-02-43	29.986
25-2-16	-149576.308	16.879	-40827.659	29.159	-689130.056261	-4361495.564972	357-03-34	89-59-58	15.361
25-2-39	-149560.967	25.840	-40828.447	-1.320	-1055007.070480	197420.476440	357-05-57	180-02-23	10.512
25-2-60	-149550.468	8.962	-40828.979	-30.493	-365909.309798	4560242.420724	267-03-48	89-57-51	30.000
合計				倍面積 面積	1552.274274 776.13	-1552.274274 776.13			111.734

面積 (座標法) 計算書

地番 = 25-2-26

測点名	[1] X (i)	[2] X (i+1)-X (i-1)	[3] Y (i)	[4] Y (i+1)-Y (i-1)	[2] * [3]	[1] * [4]	方向角	夾角	距離
25-2-34K	-149560.404	-19.709	-40880.565	-21.030	805715.055585	3145255.296120	177-02-26	90-00-20	18.595
25-2-18	-149578.974	-17.442	-40879.605	22.959	713022.070410	-3434183.664066	87-03-53	90-01-27	22.028
25-2-17	-149577.846	19.709	-40857.606	21.030	-805262.556654	-3145622.101380	357-00-53	89-57-00	18.606
25-2-33K	-149559.265	17.442	-40858.575	-22.959	-712655.265150	3433731.165135	267-02-06	90-01-13	22.019
合計				倍面積 面積	819.304191 409.65	-819.304191 409.65			81.248

面積 (座標法) 計算書

地番 = 25-2-27

測点名	[1] X (i)	[2] X (i+1)-X (i-1)	[3] Y (i)	[4] Y (i+1)-Y (i-1)	[2] * [3]	[1] * [4]	方向角	夾角	距離
25-2-19K	-149572.987	-3.900	-40888.796	-8.684	159466.304400	1298891.819108	177-06-37	90-02-16	3.451
25-2-8	-149576.434	-6.286	-40888.622	3.328	257025.877892	-497790.372352	131-59-28	134-52-51	4.244
25-2-7	-149579.273	-2.540	-40885.468	9.017	103849.088720	-1348756.304641	87-04-50	135-05-22	5.871
25-2-18	-149578.974	6.739	-40879.605	5.530	-275487.658095	-827171.726220	357-02-24	89-57-34	6.449
25-2-41K	-149572.534	5.987	-40879.938	-9.191	-244748.188806	1374721.159994	267-04-21	90-01-57	8.870
合計				倍面積 面積	105.424111 52.71	-105.424111 52.71			28.885

面積 (座標法) 計算書

地番 = 25-2-28

測点名	[1] X (i)	[2] X (i+1)-X (i-1)	[3] Y (i)	[4] Y (i+1)-Y (i-1)	[2] * [3]	[1] * [4]	方向角	夾角	距離
25-2-41K	-149572.534	1.702	-40879.938	8.793	-69577.654476	-1315191.291462	357-01-15	89-56-54	1.251
25-2-42K	-149571.285	0.796	-40880.003	-8.921	-32540.482388	1334325.433485	267-04-18	90-03-03	8.868
25-2-20	-149571.738	-1.702	-40888.859	-8.793	69592.838018	1315184.292234	177-06-45	90-02-27	1.251
25-2-19K	-149572.987	-0.796	-40888.796	8.921	32547.481616	-1334340.617027	87-04-21	89-57-36	8.870
合計				倍面積 面積	22.182770 11.09	-22.182770 11.09			20.240

面積 (座標法) 計算書

地番 = 25-2-29

測点名	[1] X (i)	[2] X (i+1)-X (i-1)	[3] Y (i)	[4] Y (i+1)-Y (i-1)	[2] * [3]	[1] * [4]	方向角	夾角	距離
25-2-21K	-149570.504	-1.688	-40888.922	-8.792	69020.500336	1315023.871168	177-04-39	90-00-45	1.236
25-2-20	-149571.738	-0.781	-40888.859	8.919	31934.198879	-1334030.331222	87-04-18	89-59-39	8.868
25-2-42K	-149571.285	1.688	-40880.003	8.792	-69005.445064	-1315030.737720	357-02-01	89-57-43	1.237
25-2-43K	-149570.050	0.781	-40880.067	-8.919	-31927.332327	1334015.275950	267-03-54	90-01-53	8.867
合計				倍面積 面積	21.921824 10.96	-21.921824 10.96			20.208

面積 (座標法) 計算書

地番 = 25-2-30

測点名	[1] X (i)	[2] X (i+1)-X (i-1)	[3] Y (i)	[4] Y (i+1)-Y (i-1)	[2] * [3]	[1] * [4]	方向角	夾角	距離
25-2-43K	-149570.050	6.270	-40880.067	8.555	-256318.020090	-1279571.777750	357-02-50	89-58-56	5.824
25-2-44K	-149564.234	5.362	-40880.367	-9.153	-219200.527854	1368961.433802	267-03-52	90-01-02	8.865
25-2-22K	-149564.688	-6.270	-40889.220	-8.555	256375.409400	1279525.905840	177-04-01	90-00-09	5.824
25-2-21K	-149570.504	-5.362	-40888.922	9.153	219246.399764	-1369018.823112	87-03-54	89-59-53	8.867
合計				倍面積 面積	103.261220 51.63	-103.261220 51.63			29.380

面積 (座標法) 計算書

地番 = 25-2-31

測点名	[1] X (i)	[2] X (i+1)-X (i-1)	[3] Y (i)	[4] Y (i+1)-Y (i-1)	[2] * [3]	[1] * [4]	方向角	夾角	距離
25-2-44K	-149564.234	2.302	-40880.367	8.757	-94106.604834	-1309733.997138	357-01-35	89-57-43	1.850
25-2-45K	-149562.386	1.394	-40880.463	-8.948	-56987.365422	1338284.229928	267-03-50	90-02-15	8.864
25-2-23K	-149562.840	-2.302	-40889.315	-8.757	94127.203130	1309721.789880	177-03-26	89-59-36	1.850
25-2-22K	-149564.688	-1.394	-40889.220	8.948	56999.572680	-1338304.828224	87-03-52	90-00-26	8.865
合計				倍面積 面積	32.805554 16.40	-32.805554 16.40			21.429

面積 (座標法) 計算書

地番 = 25-2-32

測点名	[1] X (i)	[2] X (i+1)-X (i-1)	[3] Y (i)	[4] Y (i+1)-Y (i-1)	[2] * [3]	[1] * [4]	方向角	夾角	距離
25-2-45K	-149562.386	2.436	-40880.463	8.750	-99584.807868	-1308670.877500	357-03-14	89-59-24	1.985
25-2-34K	-149560.404	4.567	-40880.565	-0.246	-186701.540355	36791.859384	356-48-42	179-45-28	2.589
25-2-46	-149557.819	2.132	-40880.709	-8.984	-87157.671588	1343627.445896	267-03-59	90-15-17	8.852
25-2-24	-149558.272	-5.021	-40889.549	-8.606	205306.425529	1287098.488832	177-04-03	90-00-04	4.574
25-2-23K	-149562.840	-4.114	-40889.315	9.086	168218.641910	-1358927.964240	87-03-50	89-59-47	8.864
合計				倍面積 面積	81.047628 40.52	-81.047628 40.52			26.864

面積 (座標法) 計算書

地番 = 25-2-33

測点名	[1] X (i)	[2] X (i+1)-X (i-1)	[3] Y (i)	[4] Y (i+1)-Y (i-1)	[2] * [3]	[1] * [4]	方向角	夾角	距離
25-2-28	-149546.366	-12.355	-40890.161	-8.234	505197.939155	1231364.777644	177-03-27	89-57-47	11.922
25-2-24	-149558.272	-11.453	-40889.549	9.452	468308.004697	-1413624.786944	87-03-59	90-00-32	8.852
25-2-46	-149557.819	12.355	-40880.709	8.234	-505081.159695	-1231459.081646	357-05-07	90-01-08	11.917
25-2-50	-149545.917	11.453	-40881.315	-9.452	-468213.700695	1413508.007484	267-05-40	90-00-33	8.857
合計				倍面積 面積	211.083462 105.54	-211.083462 105.54			41.548

面積 (座標法) 計算書

地番 = 25-2-37

測点名	[1] X (i)	[2] X (i+1)-X (i-1)	[3] Y (i)	[4] Y (i+1)-Y (i-1)	[2] * [3]	[1] * [4]	方向角	夾角	距離
25-2-29K	-149544.746	-2.069	-40890.246	-8.766	84601.918974	1310909.243436	176-59-47	89-54-02	1.622
25-2-28	-149546.366	-1.171	-40890.161	8.931	47882.378531	-1335598.594746	87-05-40	90-05-53	8.857
25-2-50	-149545.917	2.069	-40881.315	8.766	-84583.440735	-1310919.508422	357-10-22	90-04-42	1.622
25-2-51K	-149544.297	1.171	-40881.395	-8.931	-47872.113545	1335580.116507	267-05-45	89-55-23	8.862
合計				倍面積 面積	28.743225 14.37	-28.743225 14.37			20.963

面積 (座標法) 計算書

地番 = 25-2-38

測点名	[1] X (i)	[2] X (i+1)-X (i-1)	[3] Y (i)	[4] Y (i+1)-Y (i-1)	[2] * [3]	[1] * [4]	方向角	夾角	距離
25-2-51K	-149544.297	5.306	-40881.395	8.610	-216916.681870	-1287576.397170	357-09-34	90-03-49	4.863
25-2-52	-149539.440	4.406	-40881.636	-9.105	-180124.488216	1361556.601200	267-05-14	89-55-40	8.875
25-2-30	-149539.891	-5.306	-40890.500	-8.610	216964.993000	1287538.461510	177-00-19	89-55-05	4.862
25-2-29K	-149544.746	-4.406	-40890.246	9.105	180162.423876	-1361604.912330	87-05-45	90-05-26	8.862
合計				倍面積 面積	86.246790 43.12	-86.246790 43.12			27.462

面積 (座標法) 計算書

地番 = 25-2-39

測点名	[1] X (i)	[2] X (i+1)-X (i-1)	[3] Y (i)	[4] Y (i+1)-Y (i-1)	[2] * [3]	[1] * [4]	方向角	夾角	距離
25-2-31K	-149538.216	-2.126	-40890.589	-8.780	86933.392214	1312945.536480	176-57-31	89-52-11	1.677
25-2-30	-149539.891	-1.224	-40890.500	8.953	50049.972000	-1338830.644123	87-05-14	90-07-43	8.875
25-2-52	-149539.440	2.126	-40881.636	8.780	-86914.358136	-1312956.283200	357-07-45	90-02-31	1.677
25-2-32K	-149537.765	1.224	-40881.720	-8.953	-50039.225280	1338811.610045	267-05-20	89-57-35	8.880
合計				倍面積 面積	29.780798 14.89	-29.780798 14.89			21.109