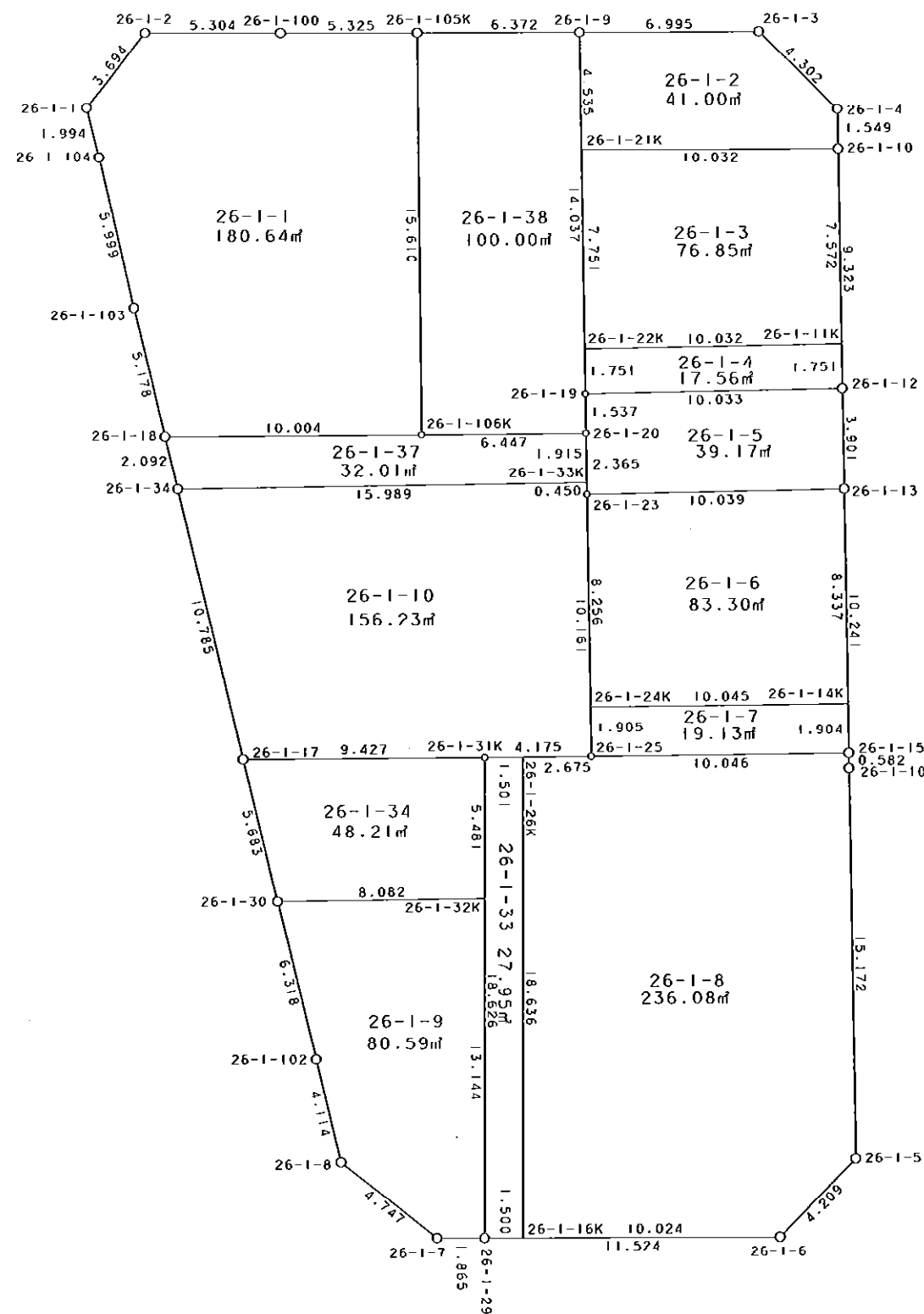


26-1街区



S = 1 / 250



凡 例

記号	名称
⊙	地区界点
○	街区点
○	画地点 (折れ点)
┆	画地点 (直線中)

面積 (座標法) 計算書

地番 = 26-1街区  
測点名

	[1] X (i)	[2] X (i+1)-X (i-1)	[3] Y (i)	[4] Y (i+1)-Y (i-1)	[2] * [3]	[1] * [4]	方向角	夾 角	距 離
26-1-2	-149589.387	-3.257	-40925.756	-7.457	133295.187292	1115488.058859	215-45-34	128-33-30	3.694
26-1-1	-149592.385	-4.905	-40927.915	-1.576	200751.423075	235757.598760	163-00-03	127-14-29	1.994
26-1-104	-149594.292	-7.660	-40927.332	2.283	313503.363120	-341523.768636	163-32-16	180-32-13	5.999
26-1-103	-149600.045	-10.712	-40925.632	3.191	438395.369984	-477373.743595	163-15-57	179-43-41	5.178
26-1-18	-149605.004	-6.962	-40924.141	2.094	284913.869642	-313272.878376	163-14-44	179-58-47	2.092
26-1-34	-149607.007	-12.334	-40923.538	3.699	504750.917692	-553396.318893	163-19-03	180-04-19	10.785
26-1-17	-149617.338	-15.776	-40920.442	4.724	645560.892992	-706792.304712	163-21-14	180-02-11	5.683
26-1-30	-149622.783	-11.494	-40918.814	3.451	470320.848116	-516348.224133	163-13-43	179-52-29	6.318
26-1-102	-149628.832	-9.994	-40916.991	2.991	408924.408054	-447539.836512	163-30-27	180-16-44	4.114
26-1-8	-149632.777	-6.665	-40915.823	5.058	272703.960295	-756842.586066	124-57-44	141-27-17	4.747
26-1-7	-149635.497	-2.621	-40911.933	5.752	107230.176393	-860703.378744	86-57-23	141-59-39	1.865
26-1-29	-149635.398	0.698	-40910.071	13.370	-28555.229558	-2000625.271260	87-01-13	180-03-50	11.524
26-1-6	-149634.799	3.744	-40898.563	14.305	-153124.219872	-2140525.799695	41-38-54	134-37-41	4.209
26-1-5	-149631.654	18.282	-40895.766	1.762	-747656.394012	-263650.974348	356-05-18	134-26-24	15.172
26-1-101	-149616.517	15.718	-40896.801	-1.070	-642815.918118	160089.673190	356-33-09	180-27-51	0.582
26-1-15	-149615.936	10.798	-40896.836	-0.735	-441604.035128	109967.712960	356-04-50	179-31-41	10.241
26-1-13	-149605.719	14.109	-40897.536	-0.967	-577023.335424	144668.730273	356-04-32	179-59-42	3.901
26-1-12	-149601.827	13.193	-40897.803	-0.910	-539564.714979	136137.662570	356-02-43	179-58-11	9.323
26-1-10	-149592.526	10.846	-40898.446	-0.753	-443584.545316	112643.172078	355-55-39	179-52-56	1.549
26-1-4	-149590.981	4.380	-40898.556	-3.346	-179135.675280	500531.422426	311-13-16	135-17-37	4.302
26-1-3	-149588.146	2.465	-40901.792	-10.221	-100822.917280	1528940.440266	266-58-04	135-44-48	6.995
26-1-9	-149588.516	-0.705	-40908.777	-13.348	28840.687785	1996707.511568	266-59-11	180-01-07	6.372
26-1-105K	-149588.851	-0.612	-40915.140	-11.681	25040.065680	1747347.368531	267-01-06	180-01-55	5.325
26-1-100	-149589.128	-0.536	-40920.458	-10.616	21933.365488	1588038.182848	267-12-04	180-10-58	5.304
合計				倍面積 面積	2277.550641 1138.77	-2277.550641 1138.77			137.268

地番	筆種別	面積	坪数
26-1-1	筆界	180.64	54.64
26-1-2	筆界	41.00	12.40
26-1-3	筆界	76.85	23.24
26-1-4	筆界	17.56	5.31
26-1-5	筆界	39.17	11.84
26-1-6	筆界	83.30	25.20
26-1-7	筆界	19.13	5.78
26-1-8	筆界	236.08	71.41
26-1-9	筆界	80.59	24.38
26-1-10	筆界	156.23	47.26
26-1-33	筆界	27.95	8.45
26-1-34	筆界	48.21	14.58
26-1-37	筆界	32.01	9.68
26-1-38	筆界	100.00	30.25
	合計	1138.72	344.42

面積 (座標法) 計算書

地番 = 26-1-1  
測点名

	[1] X (i)	[2] X (i+1)-X (i-1)	[3] Y (i)	[4] Y (i+1)-Y (i-1)	[2] * [3]	[1] * [4]	方向角	夾角	距離
26-1-2	-149589.387	-3.257	-40925.756	-7.457	133295.187292	1115488.058859	215-45-34	128-33-30	3.694
26-1-1	-149592.385	-4.905	-40927.915	-1.576	200751.423075	235757.598760	163-00-03	127-14-29	1.994
26-1-104	-149594.292	-7.660	-40927.332	2.283	313503.363120	-341523.768636	163-32-16	180-32-13	5.999
26-1-103	-149600.045	-10.712	-40925.632	3.191	438395.369984	-477373.743595	163-15-57	179-43-41	5.178
26-1-18	-149605.004	-4.385	-40924.141	11.479	179452.358285	-1717315.840916	86-42-39	103-26-42	10.004
26-1-106K	-149604.430	16.153	-40914.153	9.001	-660886.313409	-1346589.474430	356-22-30	89-39-51	15.610
26-1-105K	-149588.851	15.302	-40915.140	-6.305	-626083.472280	943157.705555	267-01-06	90-38-36	5.325
26-1-100	-149589.128	-0.536	-40920.458	-10.616	21933.365488	1588038.182848	267-12-04	180-10-58	5.304
合計				倍面積 面積	361.281555 180.64	-361.281555 180.64			53.108

面積 (座標法) 計算書

地番 = 26-1-2  
測点名

	[1] X (i)	[2] X (i+1)-X (i-1)	[3] Y (i)	[4] Y (i+1)-Y (i-1)	[2] * [3]	[1] * [4]	方向角	夾角	距離
26-1-10	-149592.526	2.059	-40898.446	9.909	-84209.900314	-1482312.340134	355-55-39	88-51-52	1.549
26-1-4	-149590.981	4.380	-40898.556	-3.346	-179135.675280	500531.422426	311-13-16	135-17-37	4.302
26-1-3	-149588.146	2.465	-40901.792	-10.221	-100822.917280	1528940.440266	266-58-04	135-44-48	6.995
26-1-9	-149588.516	-4.894	-40908.777	-6.673	200207.554638	998204.167268	176-03-17	89-05-13	4.535
26-1-21K	-149593.040	-4.010	-40908.465	10.331	164042.944650	-1545445.696240	87-03-47	91-00-30	10.032
合計				倍面積 面積	82.006414 41.00	-82.006414 41.00			27.413

面積 (座標法) 計算書

地番 = 26-1-3  
測点名

	[1] X (i)	[2] X (i+1)-X (i-1)	[3] Y (i)	[4] Y (i+1)-Y (i-1)	[2] * [3]	[1] * [4]	方向角	夾角	距離
26-1-11K	-149600.080	8.247	-40897.924	9.486	-337285.179228	-1419106.358880	356-02-49	90-00-29	7.572
26-1-10	-149592.526	7.040	-40898.446	-10.541	-287925.059840	1576854.816566	267-03-47	91-00-58	10.032
26-1-21K	-149593.040	-8.247	-40908.465	-9.486	337372.110855	1419039.577440	176-03-26	88-59-39	7.751
26-1-22K	-149600.773	-7.040	-40907.932	10.541	287991.841280	-1576941.748193	86-02-20	89-58-54	10.032
合計				倍面積 面積	153.713067 76.85	-153.713067 76.85			35.387

面積 (座標法) 計算書

地番 = 26-1-4  
測点名

	[1] X (i)	[2] X (i+1)-X (i-1)	[3] Y (i)	[4] Y (i+1)-Y (i-1)	[2] * [3]	[1] * [4]	方向角	夾角	距離
26-1-22K	-149600.773	-2.440	-40907.932	-9.888	99815.354080	1479252.443424	176-04-14	90-01-54	1.751
26-1-19	-149602.520	-1.054	-40907.812	10.129	43116.833848	-1515323.925080	86-02-21	89-58-07	10.033
26-1-12	-149601.827	2.440	-40897.803	9.888	-99790.639320	-1479262.865376	356-02-17	89-59-56	1.751
26-1-11K	-149600.080	1.054	-40897.924	-10.129	-43106.411896	1515299.210320	266-02-20	90-00-03	10.032
合計				倍面積 面積	35.136712 17.56	-35.136712 17.56			23.567

面積 (座標法) 計算書

地番 = 26-1-5

測点名	[1] X (i)	[2] X (i+1)-X (i-1)	[3] Y (i)	[4] Y (i+1)-Y (i-1)	[2] * [3]	[1] * [4]	方向角	夾角	距離
26-1-19	-149602.520	-2.227	-40907.812	-9.914	91101.697324	1483159.383280	176-27-22	90-25-01	1.537
26-1-20	-149604.054	-3.893	-40907.717	0.261	159253.742281	-39046.658094	175-58-29	179-31-07	2.365
26-1-23	-149606.413	-1.665	-40907.551	10.181	68111.072415	-1523142.890753	86-02-09	90-03-40	10.039
26-1-13	-149605.719	4.586	-40897.536	9.748	-187556.100096	-1458356.548812	356-04-32	90-02-23	3.901
26-1-12	-149601.827	3.199	-40897.803	-10.276	-130832.071797	1537308.374252	266-02-21	89-57-49	10.033
合計				倍面積 面積	78.340127 39.17	-78.340127 39.17			27.875

面積 (座標法) 計算書

地番 = 26-1-6

測点名	[1] X (i)	[2] X (i+1)-X (i-1)	[3] Y (i)	[4] Y (i+1)-Y (i-1)	[2] * [3]	[1] * [4]	方向角	夾角	距離
26-1-14K	-149614.036	8.931	-40896.966	9.456	-365250.803346	-1414750.324416	356-04-46	89-35-02	8.337
26-1-13	-149605.719	7.623	-40897.536	-10.585	-311761.916928	1583576.535615	266-02-09	89-57-23	10.039
26-1-23	-149606.413	-8.931	-40907.551	-9.456	365345.337981	1414678.241328	176-07-03	90-04-54	8.256
26-1-24K	-149614.650	-7.623	-40906.992	10.585	311834.000016	-1583671.070250	86-29-44	90-22-41	10.045
合計				倍面積 面積	166.617723 83.30	-166.617723 83.30			36.677

面積 (座標法) 計算書

地番 = 26-1-7

測点名	[1] X (i)	[2] X (i+1)-X (i-1)	[3] Y (i)	[4] Y (i+1)-Y (i-1)	[2] * [3]	[1] * [4]	方向角	夾角	距離
26-1-24K	-149614.650	-2.515	-40906.992	-9.897	102881.084880	1480736.191050	176-07-04	89-37-20	1.905
26-1-25	-149616.551	-1.286	-40906.863	10.156	52606.225818	-1519505.691956	86-29-25	90-22-21	10.046
26-1-15	-149615.936	2.515	-40896.836	9.897	-102855.542540	-1480748.918592	356-05-09	89-35-44	1.904
26-1-14K	-149614.036	1.286	-40896.966	-10.156	-52593.498276	1519480.149616	266-29-44	90-24-35	10.045
合計				倍面積 面積	38.269882 19.13	-38.269882 19.13			23.900

面積 (座標法) 計算書

地番 = 26-1-8

測点名	[1] X (i)	[2] X (i+1)-X (i-1)	[3] Y (i)	[4] Y (i+1)-Y (i-1)	[2] * [3]	[1] * [4]	方向角	夾角	距離
26-1-16K	-149635.320	-18.090	-40908.573	10.970	740036.085570	-1641499.460400	87-01-14	89-58-24	10.024
26-1-6	-149634.799	3.666	-40898.563	12.807	-149934.131958	-1916372.870793	41-38-54	134-37-40	4.209
26-1-5	-149631.654	18.282	-40895.766	1.762	-747656.394012	-263650.974348	356-05-18	134-26-24	15.172
26-1-101	-149616.517	15.718	-40896.801	-1.070	-642815.918118	160089.673190	356-33-09	180-27-51	0.582
26-1-15	-149615.936	-0.034	-40896.836	-10.062	1390.492424	1505435.548032	266-29-25	89-56-16	10.046
26-1-25	-149616.551	-0.773	-40906.863	-12.697	31621.005099	1899681.348047	266-36-48	180-07-23	2.675
26-1-26K	-149616.709	-18.769	-40909.533	-1.710	767831.024877	255844.572390	177-02-50	90-26-02	18.636
合計				倍面積 面積	472.163882 236.08	-472.163882 236.08			61.344

面積 (座標法) 計算書

地番 = 26-1-9

測点名	[1] X (i)	[2] X (i+1)-X (i-1)	[3] Y (i)	[4] Y (i+1)-Y (i-1)	[2] * [3]	[1] * [4]	方向角	夾角	距離
26-1-30	-149622.783	-6.561	-40918.814	-6.243	268468.338654	934095.034269	163-13-43	76-51-38	6.318
26-1-102	-149628.832	-9.994	-40916.991	2.991	408924.408054	-447539.836512	163-30-27	180-16-44	4.114
26-1-8	-149632.777	-6.665	-40915.823	5.058	272703.960295	-756842.586066	124-57-44	141-27-17	4.747
26-1-7	-149635.497	-2.621	-40911.933	5.752	107230.176393	-860703.378744	86-57-23	141-59-39	1.865
26-1-29	-149635.398	13.226	-40910.071	1.185	-541076.599046	-177317.946630	357-02-52	90-05-29	13.144
26-1-32K	-149622.271	12.615	-40910.748	-8.743	-516089.086020	1308147.515353	266-22-05	89-19-13	8.082
合計				倍面積 面積	161.198330 80.59	-161.198330 80.59			38.270

面積 (座標法) 計算書

地番 = 26-1-10

測点名	[1] X (i)	[2] X (i+1)-X (i-1)	[3] Y (i)	[4] Y (i+1)-Y (i-1)	[2] * [3]	[1] * [4]	方向角	夾角	距離
26-1-34	-149607.007	-11.374	-40923.538	-12.859	465464.321212	1923796.503013	163-19-03	77-03-28	10.785
26-1-17	-149617.338	-9.790	-40920.442	12.507	400611.127180	-1871264.046366	86-42-36	103-23-33	9.427
26-1-31K	-149616.797	0.787	-40911.031	13.579	-32196.981397	-2031646.486463	86-37-20	179-54-44	4.175
26-1-25	-149616.551	10.384	-40906.863	3.480	-424776.865392	-520665.597480	356-07-04	89-29-44	10.161
26-1-23	-149606.413	10.587	-40907.551	-0.720	-433088.242437	107716.617360	355-55-24	179-48-20	0.450
26-1-33K	-149605.964	-0.594	-40907.583	-15.987	24299.104302	2391750.546468	266-15-35	90-20-11	15.989
合計				倍面積 面積	312.463468 156.23	-312.463468 156.23			50.987

面積 (座標法) 計算書

地番 = 26-1-33

測点名	[1] X (i)	[2] X (i+1)-X (i-1)	[3] Y (i)	[4] Y (i+1)-Y (i-1)	[2] * [3]	[1] * [4]	方向角	夾角	距離
26-1-26K	-149616.709	18.523	-40909.533	-2.458	-757767.279759	367757.870722	266-38-17	89-35-27	1.501
26-1-31K	-149616.797	-18.689	-40911.031	-0.538	764586.258359	80493.836786	177-02-44	90-24-27	18.626
26-1-29	-149635.398	-18.523	-40910.071	2.458	757777.245133	-367803.808284	87-01-10	89-58-26	1.500
26-1-16K	-149635.320	18.689	-40908.573	0.538	-764540.320797	-80503.802160	357-02-50	90-01-40	18.636
合計				倍面積 面積	55.902936 27.95	-55.902936 27.95			40.263

面積 (座標法) 計算書

地番 = 26-1-34

測点名	[1] X (i)	[2] X (i+1)-X (i-1)	[3] Y (i)	[4] Y (i+1)-Y (i-1)	[2] * [3]	[1] * [4]	方向角	夾角	距離
26-1-30	-149622.783	-4.933	-40918.814	9.694	201852.509462	-1450443.258402	86-22-05	103-00-51	8.082
26-1-32K	-149622.271	5.986	-40910.748	-7.783	-244891.737528	-1164510.135193	357-02-26	90-40-21	5.481
26-1-31K	-149616.797	4.933	-40911.031	-9.694	-201814.115923	1450385.230118	266-42-36	89-40-10	9.427
26-1-17	-149617.338	-5.986	-40920.442	-7.783	244949.765812	1164471.741654	163-21-14	76-38-38	5.683
合計				倍面積 面積	96.421823 48.21	-96.421823 48.21			28.673

面積 (座標法) 計算書

地番 = 26-1-37

測点名	[1] X (i)	[2] X (i+1)-X (i-1)	[3] Y (i)	[4] Y (i+1)-Y (i-1)	[2] * [3]	[1] * [4]	方向角	夾 角	距 離
26-1-34	-149607.007	-0.960	-40923.538	16.558	39286.596480	-2477192.821906	86-15-35	103-00-51	15.989
26-1-33K	-149605.964	2.953	-40907.583	15.821	-120800.092599	-2366915.956444	355-59-13	89-43-38	1.915
26-1-20	-149604.054	1.534	-40907.717	-6.570	-62752.437878	982898.634780	266-39-23	90-40-10	6.447
26-1-106K	-149604.430	-0.950	-40914.153	-16.424	38868.445350	2457103.158320	266-42-39	180-03-16	10.004
26-1-18	-149605.004	-2.577	-40924.141	-9.385	105461.511357	1404042.962540	163-14-44	76-32-05	2.092
合計				倍面積 面積	64.022710 32.01	-64.022710 32.01			36.447

面積 (座標法) 計算書

地番 = 26-1-38

測点名	[1] X (i)	[2] X (i+1)-X (i-1)	[3] Y (i)	[4] Y (i+1)-Y (i-1)	[2] * [3]	[1] * [4]	方向角	夾 角	距 離
26-1-105K	-149588.851	-15.914	-40915.140	-5.376	651123.537960	804189.662976	176-22-30	89-23-19	15.610
26-1-106K	-149604.430	-15.203	-40914.153	7.423	622017.868059	-1110513.683890	86-39-23	90-16-53	6.447
26-1-20	-149604.054	1.910	-40907.717	6.341	-78133.739470	-948639.306414	356-27-22	89-47-59	1.537
26-1-19	-149602.520	15.538	-40907.812	-1.060	-635625.582856	158578.671200	356-03-29	179-36-07	14.037
26-1-9	-149588.516	13.669	-40908.777	-7.328	-559182.072813	1096184.645248	266-59-11	90-55-42	6.372
合計				倍面積 面積	200.010880 100.00	-200.010880 100.00			44.003