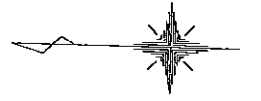
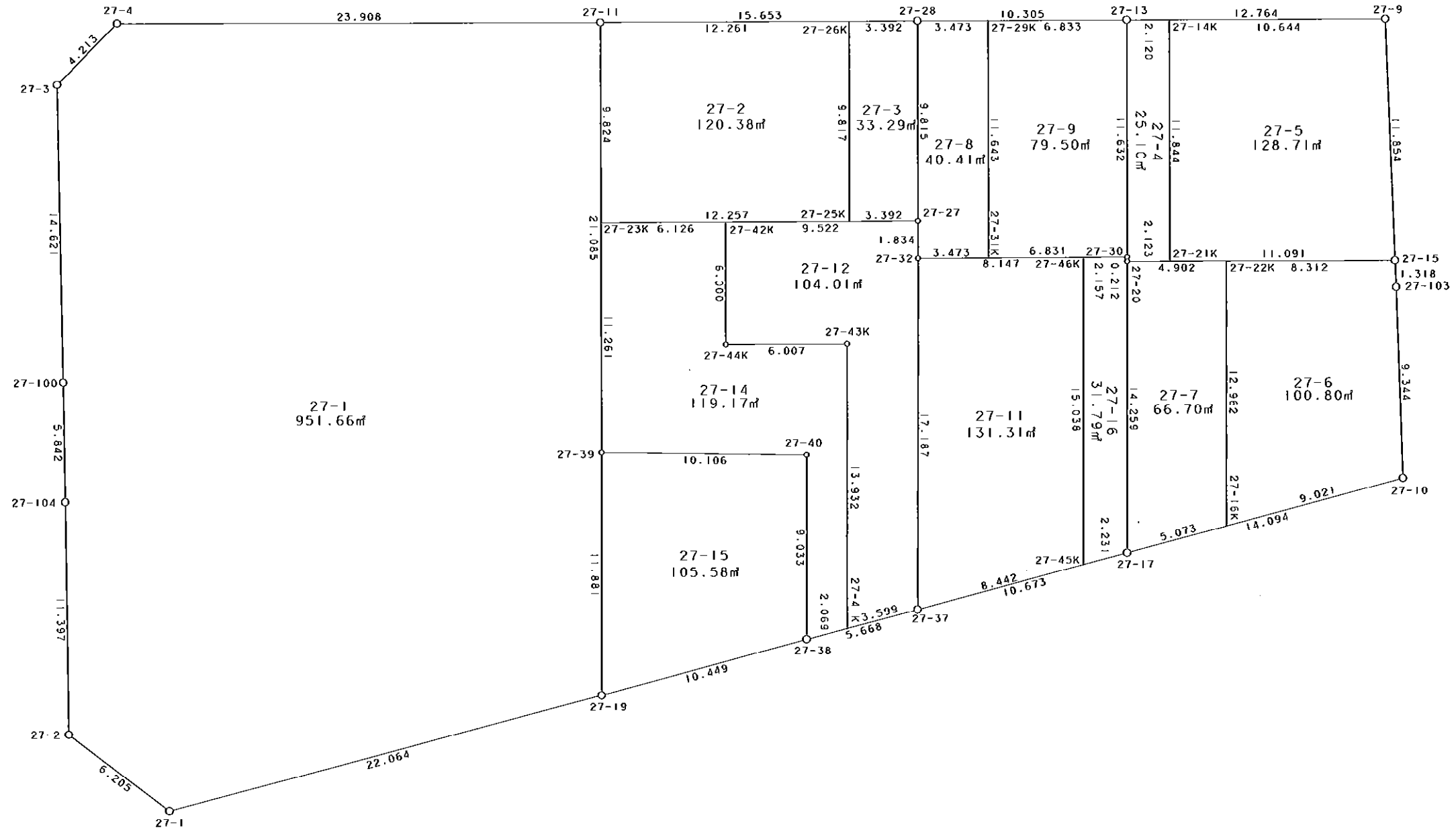


西部第4地区土地区画整理事業 出来形確認測量 (原子図)

27街区



S = 1 / 250



凡 例

記号	名称
⊙	地区界点
○	街区点
○	画地点(折れ点)
┆	画地点(直線中)

面積 (座標法) 計算書

地番 = 27街区

測点名	[1] X (i)	[2] X (i+1)-X (i-1)	[3] Y (i)	[4] Y (i+1)-Y (i-1)	[2] * [3]	[1] * [4]	方向角	夾 角	距 離
27-2	-149652.433	-5.637	-40969.544	-14.943	230945.319528	2236256.306319	214-59-56	127-47-06	6.205
27-1	-149657.516	-26.226	-40973.103	2.748	1074560.599278	-411258.853968	163-23-24	128-23-28	22.064
27-19	-149678.659	-31.145	-40966.796	9.332	1275910.861420	-1396801.245788	163-10-21	179-46-57	10.449
27-38	-149688.661	-15.434	-40963.771	4.644	632234.841614	-695154.141684	163-24-12	180-13-51	5.668
27-37	-149694.093	-15.655	-40962.152	4.686	641262.489560	-701466.519798	163-18-01	179-53-49	10.673
27-17	-149704.316	-23.725	-40959.085	7.108	971754.291625	-1064098.278128	163-20-17	180-02-16	14.094
27-10	-149717.818	-12.884	-40955.044	13.365	527664.786896	-2000978.637570	86-12-29	102-52-12	9.344
27-103	-149717.200	0.714	-40945.720	10.639	-29235.244080	-1592841.290800	85-49-29	179-37-00	1.318
27-15	-149717.104	0.939	-40944.405	13.139	-38446.796295	-1967133.029456	85-55-19	180-05-50	11.854
27-9	-149716.261	13.600	-40932.581	11.410	-556683.101600	-1708262.538010	358-08-28	92-13-09	12.764
27-13	-149703.504	23.057	-40932.995	-0.749	-943792.065715	112127.924496	358-08-14	179-59-46	10.305
27-28	-149693.204	25.944	-40933.330	-0.854	-1061974.313520	127837.996216	358-06-00	179-57-46	15.653
27-11	-149677.560	39.539	-40933.849	-1.305	-1618483.455611	195329.215800	358-06-58	180-00-58	23.908
27-4	-149653.665	26.757	-40934.635	-3.877	-1095288.028695	580207.259205	312-47-49	134-40-51	4.213
27-3	-149650.803	2.083	-40937.726	-17.691	-85273.283258	2647472.355873	266-56-45	134-08-56	14.621
27-100	-149651.582	-1.076	-40952.326	-20.434	44064.702776	3057980.426588	267-05-08	180-08-23	5.842
27-104	-149651.879	-0.851	-40958.160	-17.218	34855.394160	2576706.052622	267-12-50	180-07-42	11.397
合計				倍面積 面積	4076.998083 2038.49	-4076.998083 2038.49			190.372

地番	種別	面積	坪数
27-1	筆界	951.66	287.87
27-2	筆界	120.38	36.41
27-3	筆界	33.29	10.07
27-4	筆界	25.10	7.59
27-5	筆界	128.71	38.93
27-6	筆界	100.80	30.49
27-7	筆界	66.70	20.17
27-8	筆界	40.41	12.22
27-9	筆界	79.50	24.04
27-11	筆界	131.31	39.72
27-12	筆界	104.01	31.46
27-14	筆界	119.17	36.05
27-15	筆界	105.58	31.94
27-16	筆界	31.79	9.61
	合計	2038.41	616.57

面積 (座標法) 計算書

地番 = 27-1  
測点名

	[1] X (i)	[2] X (i+1)-X (i-1)	[3] Y (i)	[4] Y (i+1)-Y (i-1)	[2]*[3]	[1]*[4]	方向角	夾角	距離
27-2	-149652.433	-5.637	-40969.544	-14.943	230945.319528	2236256.306319	214-59-56	127-47-06	6.205
27-1	-149657.516	-26.226	-40973.103	2.748	1074560.599278	-411258.853968	163-23-24	128-23-28	22.064
27-19	-149678.659	-20.771	-40966.796	18.182	850921.319716	-2721457.377938	88-12-21	104-48-57	11.881
27-39	-149678.287	1.099	-40954.921	32.947	-45009.458179	-4931450.521789	88-01-27	179-49-06	21.085
27-11	-149677.560	24.622	-40933.849	20.286	-1007873.230078	-3036358.982160	358-06-58	90-05-31	23.908
27-4	-149653.665	26.757	-40934.635	-3.877	-1095288.028695	580207.259205	312-47-49	134-40-51	4.213
27-3	-149650.803	2.083	-40937.726	-17.691	-85273.283258	2647472.355873	266-56-45	134-08-56	14.621
27-100	-149651.582	-1.076	-40952.326	-20.434	44064.702776	3057980.426588	267-05-08	180-08-23	5.842
27-104	-149651.879	-0.851	-40958.160	-17.218	34855.394160	2576706.052622	267-12-50	180-07-42	11.397
合計				倍面積 面積	1903.335248 951.66	-1903.335248 951.66			121.216

面積 (座標法) 計算書

地番 = 27-2  
測点名

	[1] X (i)	[2] X (i+1)-X (i-1)	[3] Y (i)	[4] Y (i+1)-Y (i-1)	[2]*[3]	[1]*[4]	方向角	夾角	距離
27-26K	-149689.814	12.589	-40933.442	9.404	-515311.101338	-1407683.010856	358-05-52	90-03-12	12.261
27-11	-149677.560	11.915	-40933.849	-10.225	-487726.810835	1530453.051000	268-01-21	89-55-29	9.824
27-23K	-149677.899	-12.589	-40943.667	-9.404	515439.823863	1407570.962196	178-03-52	90-02-31	12.257
27-25K	-149690.149	-11.915	-40943.253	10.225	487838.859495	-1530581.773525	88-02-40	89-58-48	9.817
合計				倍面積 面積	240.771185 120.38	-240.771185 120.38			44.159

面積 (座標法) 計算書

地番 = 27-3  
測点名

	[1] X (i)	[2] X (i+1)-X (i-1)	[3] Y (i)	[4] Y (i+1)-Y (i-1)	[2]*[3]	[1]*[4]	方向角	夾角	距離
27-25K	-149690.149	-3.725	-40943.253	-9.697	152513.617425	1451545.374853	178-04-26	90-01-46	3.392
27-27	-149693.539	-3.055	-40943.139	9.923	125081.289645	-1485408.987497	88-02-38	89-58-12	9.815
27-28	-149693.204	3.725	-40933.330	9.697	-152476.654250	-1451574.999188	358-06-28	90-03-50	3.392
27-26K	-149689.814	3.055	-40933.442	-9.923	-125051.665310	1485372.024322	268-02-40	89-56-12	9.817
合計				倍面積 面積	66.587510 33.29	-66.587510 33.29			26.416

面積 (座標法) 計算書

地番 = 27-4  
測点名

	[1] X (i)	[2] X (i+1)-X (i-1)	[3] Y (i)	[4] Y (i+1)-Y (i-1)	[2]*[3]	[1]*[4]	方向角	夾角	距離
27-14K	-149705.623	2.515	-40932.926	11.768	-102946.308890	-1761735.771464	358-08-06	90-03-04	2.120
27-13	-149703.504	1.730	-40932.995	-11.694	-70814.081350	1750632.775776	268-05-00	89-56-54	11.632
27-30	-149703.893	-0.393	-40944.620	-11.837	16091.235660	1772044.981441	268-55-09	180-50-09	0.212
27-20	-149703.897	-2.126	-40944.832	-0.143	87048.712832	21407.657271	178-08-15	89-13-06	2.123
27-21K	-149706.019	-1.726	-40944.763	11.906	70670.660938	-1782399.862214	88-05-02	89-56-47	11.844
合計				倍面積 面積	50.219190 25.10	-50.219190 25.10			27.931

面積 (座標法) 計算書

地番 = 27-5  
測点名

	[1] X (i)	[2] X (i+1)-X (i-1)	[3] Y (i)	[4] Y (i+1)-Y (i-1)	[2] * [3]	[1] * [4]	方向角	夾角	距離
27-21K	-149706.019	-11.481	-40944.763	-11.479	470086.824003	1718475.392101	178-09-01	90-03-59	11.091
27-15	-149717.104	-10.242	-40944.405	12.182	419352.596010	-1823853.760928	85-55-19	87-46-18	11.854
27-9	-149716.261	11.481	-40932.581	11.479	-469946.962461	-1718592.960019	358-08-33	92-13-14	10.644
27-14K	-149705.623	10.242	-40932.926	-12.182	-419235.028092	1823713.899386	268-05-02	89-56-29	11.844
合計				倍面積 面積	257.429460 128.71	-257.429460 128.71			45.433

面積 (座標法) 計算書

地番 = 27-6  
測点名

	[1] X (i)	[2] X (i+1)-X (i-1)	[3] Y (i)	[4] Y (i+1)-Y (i-1)	[2] * [3]	[1] * [4]	方向角	夾角	距離
27-16K	-149709.176	-9.022	-40957.630	-10.370	369519.737860	1552484.155120	163-20-27	75-01-15	9.021
27-10	-149717.818	-8.024	-40955.044	11.910	328623.273056	-1783139.212380	86-12-29	102-52-02	9.344
27-103	-149717.200	0.714	-40945.720	10.639	-29235.244080	-1592841.290800	85-49-29	179-37-00	1.318
27-15	-149717.104	8.404	-40944.405	1.046	-344096.779620	-156604.090784	358-08-44	92-19-15	8.312
27-22K	-149708.796	7.928	-40944.674	-13.225	-324609.375472	1979898.827100	268-19-12	90-10-28	12.962
合計				倍面積 面積	201.611744 100.80	-201.611744 100.80			40.957

面積 (座標法) 計算書

地番 = 27-7  
測点名

	[1] X (i)	[2] X (i+1)-X (i-1)	[3] Y (i)	[4] Y (i+1)-Y (i-1)	[2] * [3]	[1] * [4]	方向角	夾角	距離
27-22K	-149708.796	5.279	-40944.674	12.798	-216146.934046	-1915973.171208	358-09-10	89-49-58	4.902
27-20	-149703.897	4.480	-40944.832	-14.411	-183432.847360	2157382.859667	268-18-58	90-09-48	14.259
27-17	-149704.316	-5.279	-40959.085	-12.798	216223.009715	1915915.836168	163-20-00	75-01-02	5.073
27-16K	-149709.176	-4.480	-40957.630	14.411	183490.182400	-2157458.935336	88-19-12	104-59-12	12.962
合計				倍面積 面積	133.410709 66.70	-133.410709 66.70			37.196

面積 (座標法) 計算書

地番 = 27-8  
測点名

	[1] X (i)	[2] X (i+1)-X (i-1)	[3] Y (i)	[4] Y (i+1)-Y (i-1)	[2] * [3]	[1] * [4]	方向角	夾角	距離
27-29K	-149696.675	3.862	-40933.217	11.523	-158084.084054	-1724954.786025	358-08-07	90-03-35	3.473
27-28	-149693.204	3.136	-40933.330	-9.922	-128366.922880	1485255.970088	268-02-38	89-54-31	9.815
27-27	-149693.539	-0.391	-40943.139	-11.642	16008.767349	1742732.181038	268-15-00	180-12-22	1.834
27-32	-149693.595	-3.527	-40944.972	-1.714	144412.916244	256574.821830	178-02-11	89-47-11	3.473
27-31K	-149697.066	-3.080	-40944.853	11.755	126110.147240	-1759689.010830	88-04-32	90-02-21	11.643
合計				倍面積 面積	80.823899 40.41	-80.823899 40.41			30.238

面積 (座標法) 計算書

地番 = 27-9

測点名	[1] X (i)	[2] X (i+1)-X (i-1)	[3] Y (i)	[4] Y (i+1)-Y (i-1)	[2] * [3]	[1] * [4]	方向角	夾角	距離
27-31K	-149697.066	-7.218	-40944.853	-11.403	295539.948954	1706995.643598	178-02-43	89-58-11	6.831
27-30	-149703.893	-6.438	-40944.620	11.858	263601.463560	-1775188.763194	88-05-00	90-02-17	11.632
27-13	-149703.504	7.218	-40932.995	11.403	-295454.357910	-1707069.056112	358-08-17	90-03-17	6.833
27-29K	-149696.675	6.438	-40933.217	-11.858	-263528.051046	1775103.172150	268-04-32	89-56-15	11.643
合計				倍面積 面積	159.003558 79.50	-159.003558 79.50			36.939

面積 (座標法) 計算書

地番 = 27-11

測点名	[1] X (i)	[2] X (i+1)-X (i-1)	[3] Y (i)	[4] Y (i+1)-Y (i-1)	[2] * [3]	[1] * [4]	方向角	夾角	距離
27-46K	-149701.737	8.584	-40944.694	14.754	-351469.253296	-2208699.427698	358-02-40	89-43-43	8.147
27-32	-149693.595	7.644	-40944.972	-17.458	-312983.365968	2613350.781510	268-20-23	90-17-43	17.187
27-37	-149694.093	-8.584	-40962.152	-14.754	351619.112768	2208586.648122	163-17-58	74-57-35	8.442
27-45K	-149702.179	-7.644	-40959.726	17.458	313096.145544	-2613500.640982	88-18-57	105-00-59	15.038
合計				倍面積 面積	262.639048 131.31	-262.639048 131.31			48.814

面積 (座標法) 計算書

地番 = 27-12

測点名	[1] X (i)	[2] X (i+1)-X (i-1)	[3] Y (i)	[4] Y (i+1)-Y (i-1)	[2] * [3]	[1] * [4]	方向角	夾角	距離
27-44K	-149684.224	-6.206	-40949.457	-5.794	254132.330142	867270.393856	178-03-49	89-59-34	6.007
27-43K	-149690.228	-6.420	-40949.254	-13.723	262894.210680	2054198.998844	268-17-20	270-13-31	13.932
27-41K	-149690.644	-3.865	-40963.180	-12.898	158322.690700	1930709.926312	163-24-11	75-06-51	3.599
27-37	-149694.093	-2.951	-40962.152	18.208	120879.310552	-2725630.045344	88-20-23	104-56-12	17.187
27-32	-149693.595	0.554	-40944.972	19.013	-22683.514488	-2846124.321735	88-15-00	179-54-37	1.834
27-27	-149693.539	9.573	-40943.139	1.512	-391948.669647	-226336.630968	358-04-06	89-49-06	9.522
27-42K	-149684.022	9.315	-40943.460	-6.318	-381388.329900	945703.650996	268-04-15	90-00-09	6.000
合計				倍面積 面積	208.028039 104.01	-208.028039 104.01			58.081

面積 (座標法) 計算書

地番 = 27-14  
測点名

	[1] X (i)	[2] X (i+1)-X (i-1)	[3] Y (i)	[4] Y (i+1)-Y (i-1)	[2] * [3]	[1] * [4]	方向角	夾角	距離
27-39	-149678.287	-10.492	-40954.921	-11.075	429699.031132	1657687.028525	178-59-06	90-57-34	10.106
27-40	-149688.391	-10.374	-40954.742	-8.850	424864.493508	1324742.260350	268-17-14	269-18-08	9.033
27-38	-149688.661	-2.253	-40963.771	-8.438	92291.376063	1263072.921518	163-24-15	75-07-01	2.069
27-41K	-149690.644	-1.567	-40963.180	14.517	64189.303060	-2173059.078948	88-17-20	104-53-05	13.932
27-43K	-149690.228	6.420	-40949.254	13.723	-262894.210680	-2054198.998844	358-03-49	89-46-29	6.007
27-44K	-149684.224	6.206	-40949.457	5.794	-254132.330142	-867270.393856	88-04-15	270-00-26	6.000
27-42K	-149684.022	6.325	-40943.460	5.790	-258967.384500	-866670.487380	358-03-49	89-59-34	6.126
27-23K	-149677.899	5.735	-40943.667	-11.461	-234811.930245	1715458.400439	268-01-32	89-57-43	11.261
合計				倍面積 面積	238.348196 119.17	-238.348196 119.17			64.534

面積 (座標法) 計算書

地番 = 27-15  
測点名

	[1] X (i)	[2] X (i+1)-X (i-1)	[3] Y (i)	[4] Y (i+1)-Y (i-1)	[2] * [3]	[1] * [4]	方向角	夾角	距離
27-19	-149678.659	-10.374	-40966.796	-8.850	424989.541704	1324656.132150	163-10-21	74-58-00	10.449
27-38	-149688.661	-9.732	-40963.771	12.054	398659.419372	-1804347.119694	88-17-14	105-06-53	9.033
27-40	-149688.391	10.374	-40954.742	8.850	-424864.493508	-1324742.260350	358-59-06	90-41-52	10.106
27-39	-149678.287	9.732	-40954.921	-12.054	-398573.291172	1804222.071498	268-12-21	89-13-15	11.881
合計				倍面積 面積	211.176396 105.58	-211.176396 105.58			41.469

面積 (座標法) 計算書

地番 = 27-16  
測点名

	[1] X (i)	[2] X (i+1)-X (i-1)	[3] Y (i)	[4] Y (i+1)-Y (i-1)	[2] * [3]	[1] * [4]	方向角	夾角	距離
27-45K	-149702.179	-2.579	-40959.726	-14.391	105635.133354	2154364.057989	163-18-12	74-59-15	2.231
27-17	-149704.316	-1.718	-40959.085	14.894	70367.708030	-2229696.082504	88-18-58	105-00-46	14.259
27-20	-149703.897	0.423	-40944.832	14.465	-17319.663936	-2165466.870105	88-55-09	180-36-11	0.212
27-30	-149703.893	2.160	-40944.620	0.138	-88440.379200	-20659.137234	358-02-03	89-06-54	2.157
27-46K	-149701.737	1.714	-40944.694	-15.106	-70179.205516	2261394.439122	268-18-57	90-16-54	15.038
合計				倍面積 面積	63.592732 31.79	-63.592732 31.79			33.897