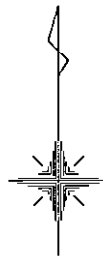
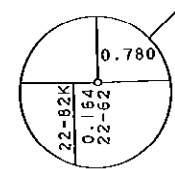
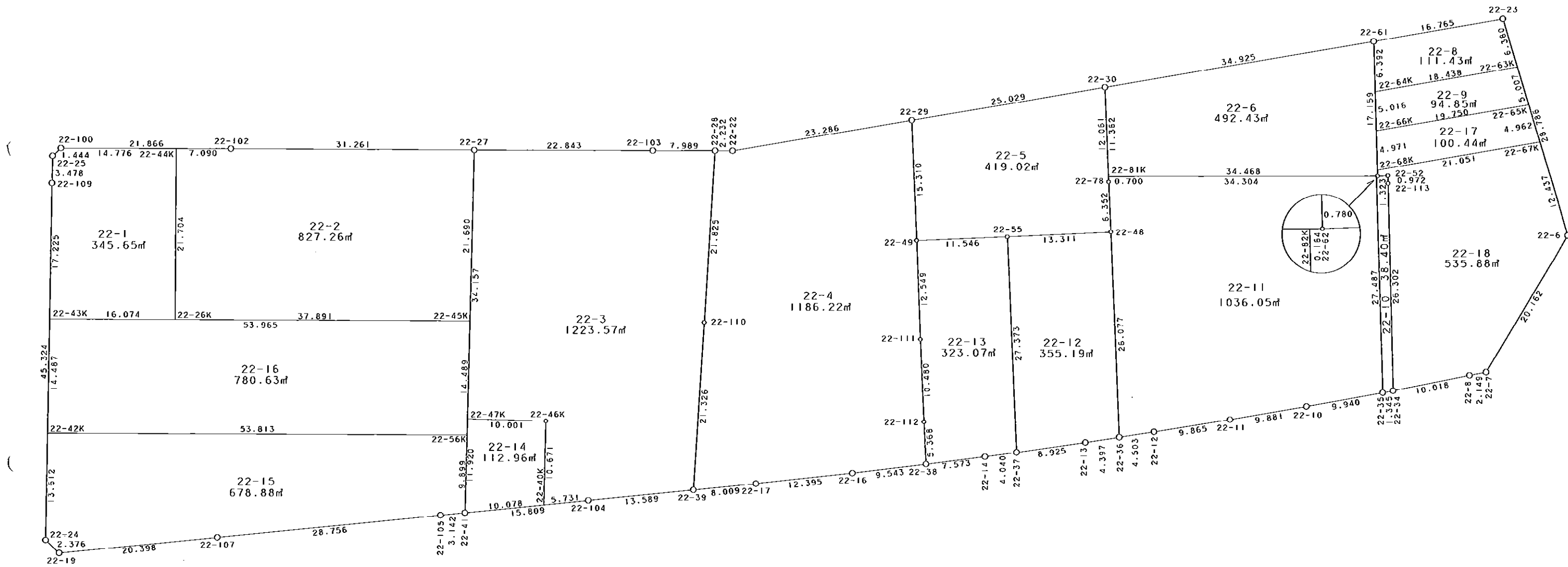


22街区



S = 1 / 500



凡 例

記号	名称
⊙	地区界点
○	街区点
○	画地点 (折れ点)
┆	画地点 (直線中)

面積 (座標法) 計算書

地番 = 22街区

測点名	[1] X (i)	[2] X (i+1)-X (i-1)	[3] Y (i)	[4] Y (i+1)-Y (i-1)	[2] * [3]	[1] * [4]	方向角	夾角	距離
22-100	-149750.715	-0.888	-41163.018	-22.928	36552.759984	3433484.393520	227-21-28	137-07-19	1.444
22-25	-149751.693	-4.455	-41164.080	-1.140	183385.976400	170716.930020	181-17-06	133-55-38	3.478
22-109	-149755.170	-48.795	-41164.158	-0.805	2008605.089610	120552.911850	180-55-09	179-38-03	45.324
22-24	-149800.488	-46.961	-41164.885	0.989	1933144.164485	-148152.682632	133-45-18	132-50-09	2.376
22-19	-149802.131	0.324	-41163.169	22.019	-13336.866756	-3298493.122489	84-27-59	130-42-41	20.398
22-107	-149800.164	4.777	-41142.866	48.921	-196539.470882	-7328373.823044	84-23-32	179-55-33	28.756
22-105	-149797.354	3.100	-41114.248	31.747	-127454.168800	-4755616.597438	84-42-18	180-18-46	3.142
22-41	-149797.064	1.830	-41111.119	18.863	-75233.347770	-2825622.018232	84-24-35	179-42-17	15.809
22-104	-149795.524	2.853	-41095.385	29.259	-117245.133405	-4382867.236716	84-27-18	180-02-43	13.589
22-39	-149794.211	2.070	-41081.860	21.498	-85039.450200	-3220275.948078	84-34-35	180-07-17	8.009
22-17	-149793.454	2.075	-41073.887	20.298	-85228.315525	-3040507.529292	83-53-46	179-19-11	12.395
22-16	-149792.136	2.432	-41061.562	21.803	-99861.718784	-3265917.941208	83-17-47	179-24-01	9.543
22-38	-149791.022	2.055	-41052.084	16.992	-84362.032620	-2545249.045824	82-51-43	179-33-56	7.573
22-14	-149790.081	1.475	-41044.570	11.519	-60540.740750	-1725431.943039	82-24-19	179-32-36	4.040
22-37	-149789.547	1.755	-41040.565	12.846	-72026.191575	-1924196.520762	82-08-13	179-43-54	8.925
22-13	-149788.326	1.865	-41031.724	13.191	-76524.165260	-1975857.808266	81-34-44	179-26-31	4.397
22-36	-149787.682	1.307	-41027.374	8.804	-53622.777818	-1318730.752328	81-32-00	179-57-16	4.503
22-12	-149787.019	2.193	-41022.920	14.200	-89963.263560	-2126975.669800	81-04-41	179-32-41	9.865
22-11	-149785.489	3.173	-41013.174	19.489	-130134.801102	-2919169.395121	80-25-41	179-21-00	9.881
22-10	-149783.846	3.379	-41003.431	19.530	-138550.593349	-2925278.512380	79-56-30	179-30-49	9.940
22-35	-149782.110	1.984	-40993.644	11.109	-81331.389696	-1663929.459990	79-22-30	179-26-00	1.345
22-34	-149781.862	2.143	-40992.322	11.159	-87846.546046	-1671415.798058	79-05-46	179-43-16	10.018
22-8	-149779.967	2.291	-40982.485	11.949	-93890.873135	-1789720.825683	79-22-49	180-17-03	2.149
22-7	-149779.571	17.662	-40980.373	12.523	-723795.347926	-1875689.567633	31-05-20	131-42-31	20.162
22-6	-149762.305	44.852	-40969.962	2.187	-1837584.735624	-327530.161035	343-23-58	132-18-38	28.786
22-23	-149734.719	24.824	-40978.186	-24.760	-1017242.489264	3707431.642440	260-31-03	97-07-05	16.765
22-61	-149737.481	-8.509	-40994.722	-50.985	348824.089498	7634365.468785	260-31-44	180-00-41	34.925
22-30	-149743.228	-9.871	-41029.171	-59.136	404998.946941	8855215.531008	260-30-58	179-59-14	25.029
22-29	-149747.352	-7.947	-41053.858	-47.657	326255.009526	7136509.554264	260-33-02	180-02-04	23.286
22-22	-149751.175	-3.799	-41076.828	-25.202	156050.869572	3774029.112350	270-36-58	190-03-56	2.232
22-28	-149751.151	0.055	-41079.060	-10.221	-2259.348300	1530606.514371	270-13-20	179-36-22	7.989
22-103	-149751.120	0.148	-41087.049	-30.832	-6080.883252	4617126.531840	270-17-36	180-04-16	22.843
22-27	-149751.003	0.315	-41109.892	-54.103	-12949.615980	8101978.515309	270-21-46	180-04-10	31.261
22-102	-149750.805	0.288	-41141.152	-53.126	-11848.651776	7955661.266430	270-14-09	179-52-23	21.866
合計				倍面積 面積	17323.986861 8661.99	-17323.986861 8661.99			472.043

地番	筆種別	面積	坪数
22-1	筆界	345.65	104.55
22-2	筆界	827.26	250.24
22-3	筆界	1223.57	370.13
22-4	筆界	1186.22	358.83
22-5	筆界	419.02	126.75
22-6	筆界	492.43	148.96
22-8	筆界	111.43	33.70
22-9	筆界	94.85	28.69
22-10	筆界	38.40	11.61
22-11	筆界	1036.05	313.40
22-12	筆界	355.19	107.44
22-13	筆界	323.07	97.73
22-14	筆界	112.96	34.17
22-15	筆界	678.88	205.36
22-16	筆界	780.63	236.14
22-17	筆界	100.44	30.38
22-18	筆合	535.88	162.10
		8661.93	2620.18

面積 (座標法) 計算書

地番 = 22-1
測点名

	[1] X (i)	[2] X (i+1)-X (i-1)	[3] Y (i)	[4] Y (i+1)-Y (i-1)	[2]*[3]	[1]*[4]	方向角	夾角	距離
22-44K	-149750.776	21.765	-41148.242	-14.658	-895591.487130	2195046.874608	270-14-12	89-55-31	14.776
22-100	-149750.715	-0.917	-41163.018	-15.838	37746.487506	2371751.824170	227-21-28	137-07-16	1.444
22-25	-149751.693	-4.455	-41164.080	-1.140	183385.976400	170716.930020	181-17-06	133-55-38	3.478
22-109	-149755.170	-20.700	-41164.158	-0.354	852098.070600	53013.330180	180-55-05	179-37-59	17.225
22-43K	-149772.393	-17.310	-41164.434	15.798	712556.352540	-2366104.264614	90-18-36	89-23-31	16.074
22-26K	-149772.480	21.617	-41148.360	16.192	-889504.098120	-2425115.996160	0-18-41	90-00-05	21.704
合計				倍面積 面積	691.301796 345.65	-691.301796 345.65			74.701

面積 (座標法) 計算書

地番 = 22-2
測点名

	[1] X (i)	[2] X (i+1)-X (i-1)	[3] Y (i)	[4] Y (i+1)-Y (i-1)	[2]*[3]	[1]*[4]	方向角	夾角	距離
22-26K	-149772.480	-21.909	-41148.360	37.772	901519.419240	-5657206.114560	90-18-36	89-59-55	37.891
22-45K	-149772.685	21.477	-41110.470	38.468	-882929.564190	-5761455.646580	1-31-37	91-13-01	21.690
22-27	-149751.003	21.880	-41109.892	-30.682	-899484.436960	4594660.274046	270-21-46	88-50-09	31.261
22-102	-149750.805	0.227	-41141.152	-38.350	-9339.041504	5742943.371750	270-14-04	179-52-18	7.090
22-44K	-149750.776	-21.675	-41148.242	-7.208	891888.145350	1079403.593408	180-18-41	90-04-37	21.704
合計				倍面積 面積	1654.521936 827.26	-1654.521936 827.26			119.636

面積 (座標法) 計算書

地番 = 22-3
測点名

	[1] X (i)	[2] X (i+1)-X (i-1)	[3] Y (i)	[4] Y (i+1)-Y (i-1)	[2]*[3]	[1]*[4]	方向角	夾角	距離
22-27	-149751.003	-34.028	-41109.892	-23.753	1398887.404976	3557035.574259	181-31-36	91-14-00	34.157
22-47K	-149785.148	-34.412	-41110.802	9.087	1414704.918424	-1361097.639876	91-31-48	90-00-12	10.001
22-46K	-149785.415	-10.934	-41100.805	9.713	449396.201870	-1454865.735895	181-31-30	269-59-42	10.671
22-40K	-149796.082	-10.109	-41101.089	5.420	415490.908701	-811894.764440	84-24-46	82-53-16	5.731
22-104	-149795.524	1.871	-41095.385	19.229	-76889.465335	-2880418.130996	84-27-18	180-02-32	13.589
22-39	-149794.211	22.592	-41081.860	14.937	-928121.381120	-2237476.129707	3-47-47	99-20-29	21.326
22-110	-149772.932	43.060	-41080.448	2.800	-1768924.090880	-419364.209600	3-38-47	179-51-00	21.825
22-28	-149751.151	21.812	-41079.060	-6.601	-896016.456720	988507.347751	270-13-20	86-34-33	7.989
22-103	-149751.120	0.148	-41087.049	-30.832	-6080.883252	4617126.531840	270-17-36	180-04-16	22.843
合計				倍面積 面積	2447.156664 1223.57	-2447.156664 1223.57			148.132

面積 (座標法) 計算書

地番 = 22-4
測点名

	[1] X (i)	[2] X (i+1)-X (i-1)	[3] Y (i)	[4] Y (i+1)-Y (i-1)	[2] * [3]	[1] * [4]	方向角	夾角	距離
22-28	-149751.151	-21.757	-41079.060	-3.620	893757.108420	542099.166620	183-38-47	93-01-49	21.825
22-110	-149772.932	-43.060	-41080.448	-2.800	1768924.090880	419364.209600	183-47-47	180-09-00	21.326
22-39	-149794.211	-20.522	-41081.860	6.561	843081.930920	-982799.818371	84-34-35	80-46-48	8.009
22-17	-149793.454	2.075	-41073.887	20.298	-85228.315525	-3040507.529292	83-53-46	179-19-11	12.395
22-16	-149792.136	2.432	-41061.562	21.803	-99861.718784	-3265917.941208	83-17-47	179-24-01	9.543
22-38	-149791.022	6.476	-41052.084	9.234	-265853.295984	-1383170.297148	357-23-40	94-05-53	5.368
22-112	-149785.660	15.832	-41052.328	-0.692	-649940.456896	103651.676720	357-33-00	180-09-20	10.480
22-111	-149775.190	23.010	-41052.776	-0.922	-944624.375760	138092.725180	357-50-07	180-17-07	12.549
22-49	-149762.650	27.838	-41053.250	-1.082	-1142840.373500	162043.187300	357-43-27	179-53-20	15.310
22-29	-149747.352	11.475	-41053.858	-23.578	-471093.020550	3530743.065456	260-33-02	82-49-35	23.286
22-22	-149751.175	-3.799	-41076.828	-25.202	156050.869572	3774029.112350	270-36-58	190-03-56	2.232
合計				倍面積 面積	2372.442793 1186.22	-2372.442793 1186.22			142.323

面積 (座標法) 計算書

地番 = 22-5
測点名

	[1] X (i)	[2] X (i+1)-X (i-1)	[3] Y (i)	[4] Y (i+1)-Y (i-1)	[2] * [3]	[1] * [4]	方向角	夾角	距離
22-29	-149747.352	-19.422	-41053.858	-24.079	797348.030076	3605766.488808	177-43-27	97-12-29	15.310
22-49	-149762.650	-14.846	-41053.250	12.145	609476.549500	-1818867.384250	87-45-23	90-01-56	11.546
22-55	-149762.198	1.024	-41041.713	24.836	-42026.714112	-3719493.949528	87-32-14	179-46-51	13.311
22-48	-149761.626	6.918	-41028.414	13.015	-283834.568052	-1949147.562390	357-26-15	89-54-01	6.352
22-78	-149755.280	18.398	-41028.698	-0.757	-754845.985804	113364.746960	357-45-09	180-18-54	12.061
22-30	-149743.228	7.928	-41029.171	-25.160	-325279.267688	3767539.616480	260-30-58	82-45-49	25.029
合計				倍面積 面積	838.043920 419.02	-838.043920 419.02			83.609

面積 (座標法) 計算書

地番 = 22-6
測点名

	[1] X (i)	[2] X (i+1)-X (i-1)	[3] Y (i)	[4] Y (i+1)-Y (i-1)	[2] * [3]	[1] * [4]	方向角	夾角	距離
22-30	-149743.228	-17.100	-41029.171	-34.003	701598.824100	5091718.981684	177-45-01	97-13-17	11.362
22-81K	-149754.581	-11.406	-41028.725	34.914	467973.637350	-5228531.441034	90-05-17	92-20-16	34.468
22-62	-149754.634	17.100	-40994.257	34.003	-701001.794700	-5092106.819902	358-26-50	88-21-33	17.159
22-61	-149737.481	11.406	-40994.722	-34.914	-467585.799132	5227934.411634	260-31-44	82-04-54	34.925
合計				倍面積 面積	984.867618 492.43	-984.867618 492.43			97.914

面積 (座標法) 計算書

地番 = 22-8
測点名

	[1] X (i)	[2] X (i+1)-X (i-1)	[3] Y (i)	[4] Y (i+1)-Y (i-1)	[2] * [3]	[1] * [4]	方向角	夾角	距離
22-63K	-149740.833	9.152	-40976.363	16.363	-375015.674176	-2450209.250379	343-23-50	82-52-52	6.380
22-23	-149734.719	3.352	-40978.186	-18.359	-137358.879472	2748979.706121	260-31-03	97-07-13	16.765
22-61	-149737.481	-9.152	-40994.722	-16.363	375183.695744	2450154.401603	178-26-57	97-55-54	6.392
22-64K	-149743.871	-3.352	-40994.549	18.359	137413.728248	-2749147.727689	80-30-58	82-04-01	18.438
合計				倍面積 面積	222.870344 111.43	-222.870344 111.43			47.975

面積 (座標法) 計算書

地番 = 22-9
測点名

	[1] X (i)	[2] X (i+1)-X (i-1)	[3] Y (i)	[4] Y (i+1)-Y (i-1)	[2] * [3]	[1] * [4]	方向角	夾角	距離
22-65K	-149745.631	8.052	-40974.933	18.050	-329930.160516	-2702908.639550	343-24-14	82-53-14	5.007
22-63K	-149740.833	1.760	-40976.363	-19.616	-72118.398880	2937316.180128	260-30-58	97-06-44	18.438
22-64K	-149743.871	-8.052	-40994.549	-18.050	330088.108548	2702876.871550	178-26-47	97-55-49	5.016
22-66K	-149748.885	-1.760	-40994.413	19.616	72150.166880	-2937474.128160	80-31-00	82-04-13	19.750
合計				倍面積 面積	189.716032 94.85	-189.716032 94.85			48.211

面積 (座標法) 計算書

地番 = 22-10
測点名

	[1] X (i)	[2] X (i+1)-X (i-1)	[3] Y (i)	[4] Y (i+1)-Y (i-1)	[2] * [3]	[1] * [4]	方向角	夾角	距離
22-35	-149782.110	-27.228	-40993.644	2.099	1116174.938832	-314392.648890	79-22-30	80-59-41	1.345
22-34	-149781.862	26.543	-40992.322	0.722	-1088059.202846	-108142.504364	358-41-34	99-19-04	26.302
22-113	-149755.567	27.267	-40992.922	-0.613	-1117754.004174	91800.162571	359-14-01	180-32-27	0.972
22-52	-149754.595	0.933	-40992.935	-1.335	-38246.408355	199922.384325	268-18-37	89-04-36	1.323
22-62	-149754.634	-0.039	-40994.257	-1.486	1598.776023	222535.386124	270-00-00	181-41-23	0.164
22-82K	-149754.634	-27.476	-40994.421	0.613	1126362.711396	-91799.590642	178-22-49	88-22-49	27.487
合計				倍面積 面積	76.810876 38.40	-76.810876 38.40			57.593

面積 (座標法) 計算書

地番 = 22-11
測点名

	[1] X (i)	[2] X (i+1)-X (i-1)	[3] Y (i)	[4] Y (i+1)-Y (i-1)	[2]*[3]	[1]*[4]	方向角	夾角	距離
22-35	-149782.110	29.212	-40993.644	9.010	-1197506.328528	-1349536.811100	358-22-49	98-26-19	27.487
22-82K	-149754.634	27.529	-40994.421	-35.081	-1128535.415709	5253542.315354	270-05-19	91-42-30	34.304
22-81K	-149754.581	-0.646	-41028.725	-34.277	26504.556350	5133137.772937	177-47-17	87-41-58	0.700
22-78	-149755.280	-7.045	-41028.698	0.311	289047.177410	-46573.892080	177-26-15	179-38-58	6.352
22-48	-149761.626	-32.402	-41028.414	1.324	1329402.670428	-198284.392824	177-42-52	180-16-37	26.077
22-36	-149787.682	-25.393	-41027.374	5.494	1041808.107982	-822933.524908	81-32-00	83-49-08	4.503
22-12	-149787.019	2.193	-41022.920	14.200	-89963.263560	-2126975.669800	81-04-41	179-32-41	9.865
22-11	-149785.489	3.173	-41013.174	19.489	-130134.801102	-2919169.395121	80-25-41	179-21-00	9.881
22-10	-149783.846	3.379	-41003.431	19.530	-138550.593349	-2925278.512380	79-56-30	179-30-49	9.940
合計				倍面積 面積	2072.109922 1036.05	-2072.109922 1036.05			129.109

面積 (座標法) 計算書

地番 = 22-12
測点名

	[1] X (i)	[2] X (i+1)-X (i-1)	[3] Y (i)	[4] Y (i+1)-Y (i-1)	[2]*[3]	[1]*[4]	方向角	夾角	距離
22-55	-149762.198	-27.921	-41041.713	-12.151	1145925.668673	1819760.467898	177-35-47	90-03-33	27.373
22-37	-149789.547	-26.128	-41040.565	9.989	1072307.882320	-1496247.784983	82-08-13	84-32-26	8.925
22-13	-149788.326	1.865	-41031.724	13.191	-76524.165260	-1975857.808266	81-34-44	179-26-31	4.397
22-36	-149787.682	26.700	-41027.374	3.310	-1095430.885800	-495797.227420	357-42-52	96-08-08	26.077
22-48	-149761.626	25.484	-41028.414	-14.339	-1045568.102376	2147431.955214	267-32-14	89-49-22	13.311
合計				倍面積 面積	710.397557 355.19	-710.397557 355.19			80.083

面積 (座標法) 計算書

地番 = 22-13
測点名

	[1] X (i)	[2] X (i+1)-X (i-1)	[3] Y (i)	[4] Y (i+1)-Y (i-1)	[2]*[3]	[1]*[4]	方向角	夾角	距離
22-49	-149762.650	-12.992	-41053.250	-11.063	533363.824000	1656824.196950	177-50-07	90-04-44	12.549
22-111	-149775.190	-23.010	-41052.776	0.922	944624.375760	-138092.725180	177-33-00	179-42-53	10.480
22-112	-149785.660	-15.832	-41052.328	0.692	649940.456896	-103651.676720	177-23-40	179-50-40	5.368
22-38	-149791.022	-4.421	-41052.084	7.758	181491.263364	-1162078.748676	82-51-43	85-28-03	7.573
22-14	-149790.081	1.475	-41044.570	11.519	-60540.740750	-1725431.943039	82-24-19	179-32-36	4.040
22-37	-149789.547	27.883	-41040.565	2.857	-1144334.073895	-427948.735779	357-35-47	95-11-28	27.373
22-55	-149762.198	26.897	-41041.713	-12.685	-1103898.954561	1899733.481630	267-45-23	90-09-36	11.546
合計				倍面積 面積	646.150814 323.07	-646.150814 323.07			78.929

面積 (座標法) 計算書

地番 = 22-14
測点名

	[1] X (i)	[2] X (i+1)-X (i-1)	[3] Y (i)	[4] Y (i+1)-Y (i-1)	[2]*[3]	[1]*[4]	方向角	夾角	距離
22-47K	-149785.148	-11.649	-41110.802	-10.314	478899.732498	1544884.016472	181-31-26	89-59-38	11.920
22-41	-149797.064	-10.934	-41111.119	9.713	449508.975146	-1454978.882632	84-24-30	82-53-04	10.078
22-40K	-149796.082	11.649	-41101.089	10.314	-478786.585761	-1544996.789748	1-31-30	97-07-00	10.671
22-46K	-149785.415	10.934	-41100.805	-9.713	-449396.201870	1454865.735895	271-31-48	90-00-18	10.001
合計				倍面積 面積	225.920013 112.96	-225.920013 112.96			42.670

面積 (座標法) 計算書

地番 = 22-15
測点名

	[1] X (i)	[2] X (i+1)-X (i-1)	[3] Y (i)	[4] Y (i+1)-Y (i-1)	[2]*[3]	[1]*[4]	方向角	夾角	距離
22-42K	-149786.878	-13.319	-41164.667	-54.030	548272.199773	8092985.018340	180-55-04	90-36-29	13.612
22-24	-149800.488	-15.253	-41164.885	1.498	627887.990905	-224401.131024	133-45-18	132-50-14	2.376
22-19	-149802.131	0.324	-41163.169	22.019	-13336.866756	-3298493.122489	84-27-59	130-42-41	20.398
22-107	-149800.164	4.777	-41142.866	48.921	-196539.470882	-7328373.823044	84-23-32	179-55-33	28.756
22-105	-149797.354	3.100	-41114.248	31.747	-127454.168800	-4755616.597438	84-42-18	180-18-46	3.142
22-41	-149797.064	10.185	-41111.119	3.393	-418716.747015	-508261.438152	1-31-42	96-49-24	9.899
22-56K	-149787.169	10.186	-41110.855	-53.548	-418755.169030	8020803.325612	270-18-35	88-46-53	53.813
合計				倍面積 面積	1357.768195 678.88	-1357.768195 678.88			131.996

面積 (座標法) 計算書

地番 = 22-16
測点名

	[1] X (i)	[2] X (i+1)-X (i-1)	[3] Y (i)	[4] Y (i+1)-Y (i-1)	[2]*[3]	[1]*[4]	方向角	夾角	距離
22-56K	-149787.169	14.193	-41110.855	54.197	-583486.365015	-8118015.198293	1-31-21	91-12-46	14.489
22-45K	-149772.685	14.776	-41110.470	-53.579	-607448.304720	8024670.689615	270-18-36	88-47-15	53.965
22-43K	-149772.393	-14.193	-41164.434	-54.197	584246.811762	8117214.383421	180-55-18	90-36-42	14.487
22-42K	-149786.878	-14.776	-41164.667	53.579	608249.119592	-8025431.136362	90-18-35	89-23-17	53.813
合計				倍面積 面積	1561.261619 780.63	-1561.261619 780.63			136.754

面積 (座標法) 計算書

地番 = 22-17
測点名

	[1] X (i)	[2] X (i+1)-X (i-1)	[3] Y (i)	[4] Y (i+1)-Y (i-1)	[2]*[3]	[1]*[4]	方向角	夾角	距離
22-67K	-149750.386	8.223	-40973.515	19.345	-336925.213845	-2896921.217170	343-23-41	82-52-38	4.962
22-65K	-149745.631	1.501	-40974.933	-20.898	-61503.374433	3129384.196638	260-31-00	97-07-19	19.750
22-66K	-149748.885	-8.223	-40994.413	-19.345	337097.058099	2896892.180325	178-26-37	97-55-37	4.971
22-68K	-149753.854	-1.501	-40994.278	20.898	61532.411278	-3129556.040892	80-31-03	82-04-26	21.051
合計				倍面積 面積	200.881099 100.44	-200.881099 100.44			50.734

面積 (座標法) 計算書

地番 = 22-18
測点名

	[1] X (i)	[2] X (i+1) - X (i-1)	[3] Y (i)	[4] Y (i+1) - Y (i-1)	[2] * [3]	[1] * [4]	方向角	夾 角	距 離
22-68K	-149753.854	-4.248	-40994.278	-20.742	174143.692944	3106194.439668	178-27-28	97-56-25	0.780
22-62	-149754.634	-0.741	-40994.257	1.343	30376.744437	-201120.473462	88-18-37	89-51-09	1.323
22-52	-149754.595	-0.933	-40992.935	1.335	38246.408355	-199922.384325	179-14-01	270-55-24	0.972
22-113	-149755.567	-27.267	-40992.922	0.613	1117754.004174	-91800.162571	178-41-34	179-27-33	26.302
22-34	-149781.862	-24.400	-40992.322	10.437	1000212.656800	-1563273.293694	79-05-46	80-24-12	10.018
22-8	-149779.967	2.291	-40982.485	11.949	-93890.873135	-1789720.825683	79-22-49	180-17-03	2.149
22-7	-149779.571	17.662	-40980.373	12.523	-723795.347926	-1875689.567633	31-05-20	131-42-31	20.162
22-6	-149762.305	29.185	-40969.962	6.858	-1195708.340970	-1027069.887690	343-24-03	132-18-43	12.437
22-67K	-149750.386	8.451	-40973.515	-24.316	-346267.175265	3641330.385976	260-31-03	97-07-00	21.051
合計				倍面積 面積	1071.769414 535.88	-1071.769414 535.88			95.194