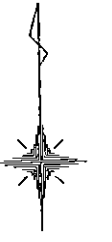
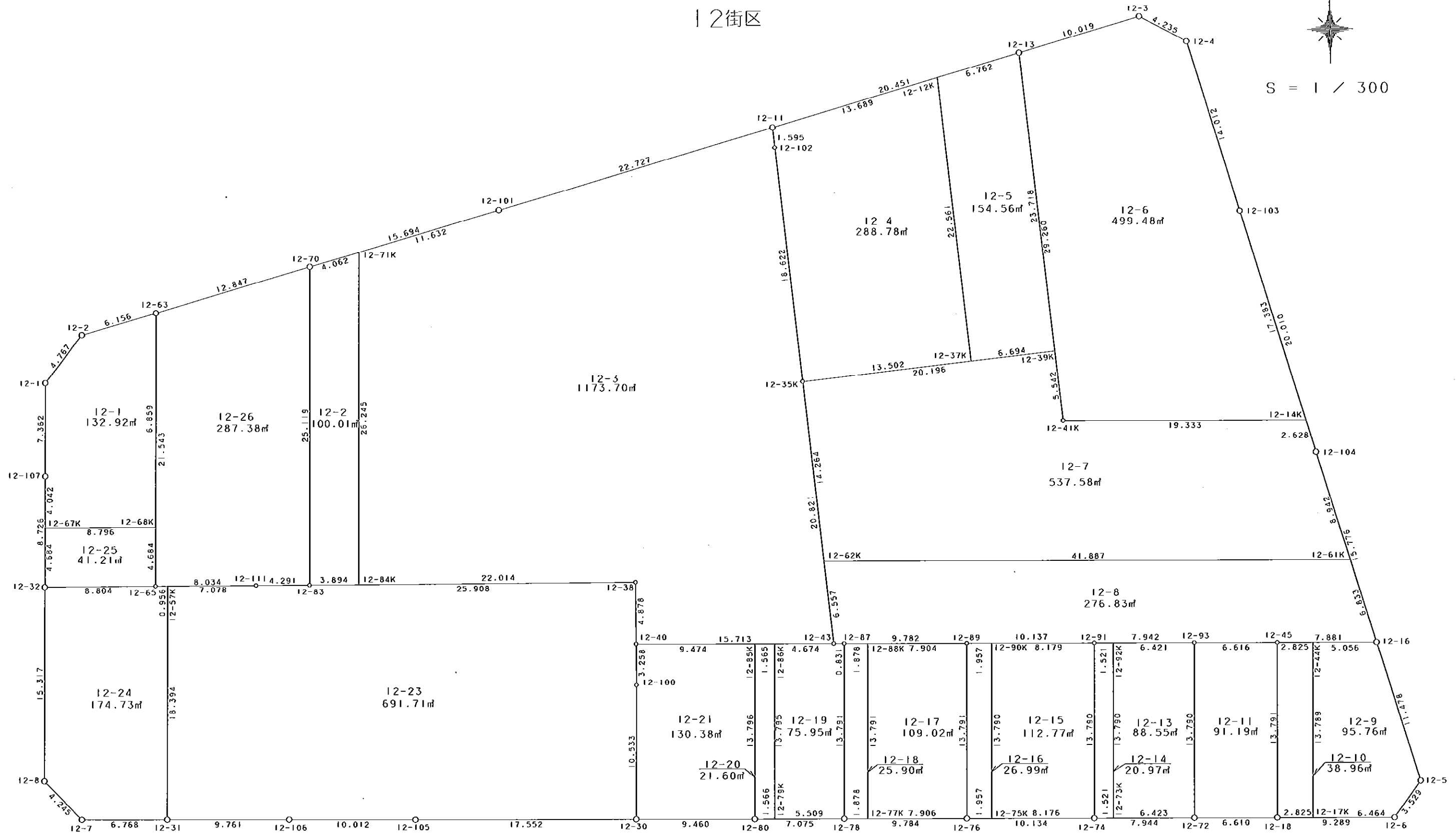


12街区



S = 1 / 300



凡例

記号	名称
⊙	地区界点
○	街区点
●	画地点 (折点)
└	画地点 (直線中)

面積 (座標法) 計算書

地番 = 12街区
測点名

	[1] X (i)	[2] X (i+1)-X (i-1)	[3] Y (i)	[4] Y (i+1)-Y (i-1)	[2] * [3]	[1] * [4]	方向角	夾角	距離
12-2	-149542.326	-5.373	-41206.393	-8.906	221401.949589	1331823.955356	218-36-46	144-08-29	4.767
12-1	-149546.051	-11.086	-41209.368	-3.090	456847.053648	462097.297590	180-53-42	142-16-56	7.362
12-107	-149553.412	-16.085	-41209.483	-0.288	662854.534055	43071.382656	181-08-10	180-14-28	8.726
12-32	-149562.136	-24.039	-41209.656	-0.436	990638.920584	65209.091296	180-59-02	179-50-52	15.317
12-8	-149577.451	-18.371	-41209.919	2.683	757067.421949	-401316.301033	136-03-00	135-03-58	4.245
12-7	-149580.507	-3.167	-41206.973	9.713	130502.483491	-1452875.464491	90-56-23	134-53-23	6.768
12-31	-149580.618	-0.273	-41200.206	16.527	11247.656238	-2472118.873686	90-57-03	180-00-40	9.761
12-106	-149580.780	-0.350	-41190.446	19.770	14416.656100	-2957212.020600	91-04-33	180-07-30	10.012
12-105	-149580.968	-0.488	-41180.436	27.559	20096.052768	-4122301.897112	90-58-46	179-54-13	17.552
12-30	-149581.268	-0.470	-41162.887	27.007	19346.556890	-4039741.304876	91-01-47	180-03-01	9.460
12-80	-149581.438	-0.287	-41153.429	16.532	11811.034123	-2472880.333016	90-56-51	179-55-04	7.075
12-78	-149581.555	-0.287	-41146.355	16.857	11809.003885	-2521496.272635	90-59-44	180-02-53	9.784
12-76	-149581.725	-0.348	-41136.572	19.915	14315.527056	-2978920.053375	91-00-23	180-00-39	10.134
12-74	-149581.903	-0.310	-41126.440	18.075	12749.196400	-2703692.896725	90-57-07	179-56-44	7.944
12-72	-149582.035	-0.248	-41118.497	14.552	10197.387256	-2176717.773320	91-00-20	180-03-13	6.610
12-18	-149582.151	-0.282	-41111.888	15.897	11593.552416	-2377907.454447	91-01-26	180-01-06	9.289
12-6	-149582.317	2.647	-41102.600	11.419	-108798.582200	-1708080.477823	37-08-45	126-07-19	3.529
12-5	-149579.504	13.809	-41100.469	-1.161	-567556.376421	173661.804144	343-20-00	126-11-15	11.478
12-16	-149568.508	26.109	-41103.761	-7.816	-1073178.095949	1169027.458528	343-20-07	180-00-07	15.776
12-104	-149553.395	34.288	-41108.285	-10.245	-1409520.876080	1532174.531775	343-23-14	180-03-07	20.010
12-103	-149534.220	32.602	-41114.006	-9.727	-1340398.823612	1454519.357940	343-23-14	180-00-00	14.012
12-4	-149520.793	15.472	-41118.012	-7.714	-636177.881664	1153403.397202	298-52-38	135-29-24	4.235
12-3	-149518.748	-0.640	-41121.720	-13.361	26317.900800	1997719.992028	254-27-22	135-34-44	10.019
12-13	-149521.433	-8.174	-41131.373	-29.354	336207.842902	4389052.144282	254-25-53	179-58-31	20.451
12-11	-149526.922	-11.597	-41151.074	-41.592	477229.005178	6219123.739824	254-24-36	179-58-43	22.727
12-101	-149533.030	-10.307	-41172.965	-37.013	424369.750255	5534666.039390	254-28-53	180-04-17	15.694
12-70	-149537.229	-7.648	-41188.087	-27.497	315006.489376	4111825.185813	254-25-35	179-56-42	12.847
12-63	-149540.678	-5.097	-41200.462	-18.306	209998.754814	2737491.651468	254-28-17	180-02-42	6.156
合計				倍面積 面積	10394.093847 5197.04	-10394.093847 5197.04			301.740

地番	筆種別	面積	坪数
12-1	筆界	132.92	40.21
12-2	筆界	100.01	30.25
12-3	筆界	1173.70	355.04
12-4	筆界	288.78	87.35
12-5	筆界	154.56	46.75
12-6	筆界	499.48	151.09
12-7	筆界	537.58	162.62
12-8	筆界	276.83	83.74
12-9	筆界	95.76	28.96
12-10	筆界	38.96	11.78
12-11	筆界	91.19	27.58
12-13	筆界	88.55	26.78
12-14	筆界	20.97	6.34
12-15	筆界	112.77	34.11
12-16	筆界	26.99	8.16
12-17	筆界	109.02	32.97
12-18	筆界	25.90	7.83
12-19	筆界	75.95	22.97
12-20	筆界	21.60	6.53
12-21	筆界	130.38	39.44
12-23	筆界	691.71	209.24
12-24	筆界	174.73	52.85
12-25	筆界	41.21	12.46
12-26	筆界	287.38	86.93
	合計	5196.93	1571.98

面積 (座標法) 計算書

地番 = 12-1
測点名

	[1] X (i)	[2] X (i+1)-X (i-1)	[3] Y (i)	[4] Y (i+1)-Y (i-1)	[2] * [3]	[1] * [4]	方向角	夾角	距離
12-68K	-149557.534	16.775	-41200.767	9.101	-691142.866425	-1361123.116934	1-02-12	90-30-33	16.859
12-63	-149540.678	15.208	-41200.462	-5.626	-626576.626096	841315.854428	254-28-17	73-26-05	6.156
12-2	-149542.326	-5.373	-41206.393	-8.906	221401.949589	1331823.955356	218-36-46	144-08-29	4.767
12-1	-149546.051	-11.086	-41209.368	-3.090	456847.053648	462097.297590	180-53-42	142-16-56	7.362
12-107	-149553.412	-11.402	-41209.483	-0.195	469870.525166	29162.915340	181-08-03	180-14-21	4.042
12-67K	-149557.453	-4.122	-41209.563	8.716	169865.818686	-1303542.760348	90-31-39	89-23-36	8.796
合計				倍面積 面積	265.854568 132.92	-265.854568 132.92			47.982

面積 (座標法) 計算書

地番 = 12-2
測点名

	[1] X (i)	[2] X (i+1)-X (i-1)	[3] Y (i)	[4] Y (i+1)-Y (i-1)	[2] * [3]	[1] * [4]	方向角	夾角	距離
12-71K	-149536.142	25.154	-41184.173	-3.454	-1035946.687642	516497.834468	254-28-44	73-28-29	4.062
12-70	-149537.229	-26.202	-41188.087	-4.354	1079210.255574	651085.095066	181-00-13	106-31-29	25.119
12-83	-149562.344	-25.154	-41188.527	3.454	1036056.208158	-516588.336176	90-34-26	89-34-13	3.894
12-84K	-149562.383	26.202	-41184.633	4.354	-1079119.753866	-651194.615582	1-00-15	90-25-49	26.245
合計				倍面積 面積	200.022224 100.01	-200.022224 100.01			59.320

面積 (座標法) 計算書

地番 = 12-3
測点名

	[1] X (i)	[2] X (i+1)-X (i-1)	[3] Y (i)	[4] Y (i+1)-Y (i-1)	[2] * [3]	[1] * [4]	方向角	夾角	距離
12-84K	-149562.383	-26.459	-41184.633	21.553	1089704.204547	-3223518.040799	90-34-03	89-33-48	22.014
12-38	-149562.601	-5.096	-41162.620	21.978	209764.711520	-3287086.844778	180-24-40	269-50-37	4.878
12-40	-149567.479	-5.151	-41162.655	15.676	212028.835905	-2344619.800804	90-59-44	90-35-04	15.713
12-43	-149567.752	20.443	-41146.944	13.623	-841166.976192	-2037561.485496	354-14-40	83-14-56	20.821
12-35K	-149547.036	39.242	-41149.032	-3.979	-1614770.313744	595047.656244	354-10-19	179-55-39	18.622
12-102	-149528.510	20.114	-41150.923	-2.042	-827709.665222	305337.217420	354-34-05	180-23-46	1.595
12-11	-149526.922	-4.520	-41151.074	-22.042	186002.854480	3295872.414724	254-24-36	79-50-31	22.727
12-101	-149533.030	-9.220	-41172.965	-33.099	379614.737300	4949393.759970	254-28-56	180-04-20	11.632
12-71K	-149536.142	-29.353	-41184.173	-11.668	1208879.030069	1744787.704856	181-00-15	106-31-19	26.245
合計				倍面積 面積	2347.418663 1173.70	-2347.418663 1173.70			144.247

面積 (座標法) 計算書

地番 = 12-4
測点名

	[1] X (i)	[2] X (i+1)-X (i-1)	[3] Y (i)	[4] Y (i+1)-Y (i-1)	[2] * [3]	[1] * [4]	方向角	夾角	距離
12-12K	-149523.248	18.770	-41137.887	-15.477	-772158.138990	2314171.309296	254-25-54	80-15-27	13.689
12-11	-149526.922	-5.262	-41151.074	-13.036	216536.951388	1949232.955192	174-34-05	100-08-11	1.595
12-102	-149528.510	-20.114	-41150.923	2.042	827709.665222	-305337.217420	174-10-19	179-36-14	18.622
12-35K	-149547.036	-17.182	-41149.032	15.326	707022.667824	-2291957.873736	84-17-14	90-06-55	13.502
12-37K	-149545.692	23.788	-41135.597	11.145	-978533.581436	-1666686.737340	354-10-27	89-53-13	22.561
合計				倍面積 面積	577.564008 288.78	-577.564008 288.78			69.969

面積 (座標法) 計算書

地番 = 12-5
測点名

	[1] X (i)	[2] X (i+1)-X (i-1)	[3] Y (i)	[4] Y (i+1)-Y (i-1)	[2] * [3]	[1] * [4]	方向角	夾角	距離
12-37K	-149545.692	-21.777	-41135.597	8.951	895809.895869	-1338583.489092	84-16-54	90-06-27	6.694
12-39K	-149545.025	24.259	-41128.936	4.224	-997746.858424	-631678.185600	354-06-09	89-49-15	23.718
12-13	-149521.433	21.777	-41131.373	-8.951	-895717.909821	1338366.346783	254-25-50	80-19-41	6.762
12-12K	-149523.248	-24.259	-41137.887	-4.224	997964.000733	631586.199552	174-10-27	99-44-37	22.561
合計				倍面積 面積	309.128357 154.56	-309.128357 154.56			59.735

面積 (座標法) 計算書

地番 = 12-6
測点名

	[1] X (i)	[2] X (i+1)-X (i-1)	[3] Y (i)	[4] Y (i+1)-Y (i-1)	[2] * [3]	[1] * [4]	方向角	夾角	距離
12-14K	-149550.877	16.318	-41109.036	14.360	-670817.249448	-2147550.593720	343-23-11	72-22-54	17.383
12-103	-149534.220	30.084	-41114.006	-8.976	-1236873.756504	1342219.158720	343-23-14	180-00-03	14.012
12-4	-149520.793	15.472	-41118.012	-7.714	-636177.881664	1153403.397202	298-52-38	135-29-24	4.235
12-3	-149518.748	-0.640	-41121.720	-13.361	26317.900800	1997719.992028	254-27-22	135-34-44	10.019
12-13	-149521.433	-31.790	-41131.373	-6.646	1307566.347670	993719.443718	174-06-05	99-38-43	29.260
12-41K	-149550.538	-29.444	-41128.366	22.337	1210983.608504	-3340510.367306	91-00-17	96-54-12	19.333
合計				倍面積 面積	998.969358 499.48	-998.969358 499.48			94.242

面積 (座標法) 計算書

地番 = 12-7
測点名

	[1] X (i)	[2] X (i+1)-X (i-1)	[3] Y (i)	[4] Y (i+1)-Y (i-1)	[2] * [3]	[1] * [4]	方向角	夾角	距離
12-35K	-149547.036	-16.203	-41149.032	-18.666	666737.765496	2791444.973976	174-14-46	89-57-38	14.264
12-62K	-149561.228	-14.926	-41147.602	43.311	614169.107452	-6477646.345908	91-00-15	96-45-29	41.887
12-61K	-149561.962	7.833	-41105.721	39.317	-321981.112593	-5880327.659954	343-20-17	72-20-02	8.942
12-104	-149553.395	11.085	-41108.285	-3.315	-455685.339225	495769.504425	343-23-34	180-03-17	2.628
12-14K	-149550.877	2.857	-41109.036	-20.081	-117448.515852	3003131.161037	271-00-17	107-36-43	19.333
12-41K	-149550.538	5.852	-41128.366	-19.900	-240683.197832	2976055.706200	354-05-49	263-05-32	5.542
12-39K	-149545.025	3.502	-41128.936	-20.666	-144033.533872	3090497.486650	264-17-08	90-11-19	20.196
合計				倍面積 面積	1075.173574 537.58	-1075.173574 537.58			112.792

面積 (座標法) 計算書

地番 = 12-8
測点名

	[1] X (i)	[2] X (i+1)-X (i-1)	[3] Y (i)	[4] Y (i+1)-Y (i-1)	[2] * [3]	[1] * [4]	方向角	夾角	距離
12-62K	-149561.228	-5.790	-41147.602	-41.223	238244.615580	6165362.501844	174-14-27	83-14-12	6.557
12-43	-149567.752	-6.538	-41146.944	1.489	269018.719872	-222706.382728	90-57-55	96-43-28	0.831
12-87	-149567.766	-0.184	-41146.113	10.612	7570.884792	-1587213.132792	90-59-45	180-01-50	9.782
12-89	-149567.936	-0.349	-41136.332	19.916	14356.579868	-2978795.013376	91-00-43	180-00-58	10.137
12-91	-149568.115	-0.311	-41126.197	18.076	12790.247267	-2703593.246740	90-57-08	179-56-25	7.942
12-93	-149568.247	-0.247	-41118.256	14.556	10156.209232	-2177115.403332	90-59-45	180-02-37	6.616
12-45	-149568.362	-0.261	-41111.641	14.495	10730.138301	-2167993.407190	91-03-41	180-03-56	7.881
12-16	-149568.508	6.400	-41103.761	5.920	-263064.070400	-885445.567360	343-19-53	72-16-12	6.833
12-61K	-149561.962	7.280	-41105.721	-43.841	-299249.648880	6556945.976042	271-00-15	107-40-22	41.887
合計				倍面積 面積	553.675632 276.83	-553.675632 276.83			98.466

面積 (座標法) 計算書

地番 = 12-9
測点名

	[1] X (i)	[2] X (i+1)-X (i-1)	[3] Y (i)	[4] Y (i+1)-Y (i-1)	[2] * [3]	[1] * [4]	方向角	夾角	距離
12-17K	-149582.201	-13.903	-41109.063	6.216	571539.302889	-929802.961416	91-01-42	90-00-07	6.464
12-6	-149582.317	2.697	-41102.600	8.594	-110853.712200	-1285510.432298	37-08-45	126-07-03	3.529
12-5	-149579.504	13.809	-41100.469	-1.161	-567556.376421	173661.804144	343-20-00	126-11-15	11.478
12-16	-149568.508	11.090	-41103.761	-8.347	-455840.709490	1248448.336276	271-03-55	107-43-55	5.056
12-44K	-149568.414	-13.693	-41108.816	-5.302	562903.017488	793011.731028	181-01-35	89-57-40	13.789
合計				倍面積 面積	191.522266 95.76	-191.522266 95.76			40.316

面積 (座標法) 計算書

地番 = 12-10
測点名

	[1] X (i)	[2] X (i+1)-X (i-1)	[3] Y (i)	[4] Y (i+1)-Y (i-1)	[2] * [3]	[1] * [4]	方向角	夾角	距離
12-44K	-149568.414	13.839	-41108.816	-2.578	-568904.904624	385587.371292	271-03-16	90-01-41	2.825
12-45	-149568.362	-13.737	-41111.641	-3.072	564750.612417	459474.008064	181-01-34	89-58-18	13.791
12-18	-149582.151	-13.839	-41111.888	2.578	568947.418032	-385622.785278	91-00-50	89-59-16	2.825
12-17K	-149582.201	13.737	-41109.063	3.072	-564715.198431	-459516.521472	1-01-35	90-00-45	13.789
合計				倍面積 面積	77.927394 38.96	-77.927394 38.96			33.230

面積 (座標法) 計算書

地番 = 12-11
測点名

	[1] X (i)	[2] X (i+1)-X (i-1)	[3] Y (i)	[4] Y (i+1)-Y (i-1)	[2] * [3]	[1] * [4]	方向角	夾角	距離
12-72	-149582.035	-13.904	-41118.497	6.368	571711.582288	-952538.398880	91-00-20	90-00-15	6.610
12-18	-149582.151	13.673	-41111.888	6.856	-562122.844624	-1025535.227256	1-01-34	90-01-14	13.791
12-45	-149568.362	13.904	-41111.641	-6.368	-571616.256464	952451.329216	270-59-45	89-58-11	6.616
12-93	-149568.247	-13.673	-41118.256	-6.856	562209.914288	1025439.901432	181-00-05	90-00-20	13.790
合計				倍面積 面積	182.395488 91.19	-182.395488 91.19			40.807

面積 (座標法) 計算書

地番 = 12-13

測点名	[1] X (i)	[2] X (i+1)-X (i-1)	[3] Y (i)	[4] Y (i+1)-Y (i-1)	[2] * [3]	[1] * [4]	方向角	夾角	距離
12-73K	-149581.928	-13.895	-41124.919	6.179	571430.749505	-924266.733112	90-57-16	89-56-41	6.423
12-72	-149582.035	13.681	-41118.497	6.663	-562542.157457	-996665.099205	1-00-05	90-02-49	13.790
12-93	-149568.247	13.895	-41118.256	-6.179	-571338.167120	924182.198213	270-57-17	89-57-12	6.421
12-92K	-149568.140	-13.681	-41124.676	-6.663	562626.692356	996572.516820	181-00-35	90-03-18	13.790
合計				倍面積 面積	177.117284 88.55	-177.117284 88.55			40.424

面積 (座標法) 計算書

地番 = 12-14

測点名	[1] X (i)	[2] X (i+1)-X (i-1)	[3] Y (i)	[4] Y (i+1)-Y (i-1)	[2] * [3]	[1] * [4]	方向角	夾角	距離
12-92K	-149568.140	13.813	-41124.676	-1.278	-568055.149588	191148.082920	270-56-30	89-55-55	1.521
12-91	-149568.115	-13.763	-41126.197	-1.764	566019.849311	263838.154860	181-00-35	90-04-05	13.790
12-74	-149581.903	-13.813	-41126.440	1.278	568079.515720	-191165.672034	90-56-30	89-55-55	1.521
12-73K	-149581.928	13.763	-41124.919	1.764	-566002.260197	-263862.520992	1-00-35	90-04-05	13.790
合計				倍面積 面積	41.955246 20.97	-41.955246 20.97			30.622

面積 (座標法) 計算書

地番 = 12-15

測点名	[1] X (i)	[2] X (i+1)-X (i-1)	[3] Y (i)	[4] Y (i+1)-Y (i-1)	[2] * [3]	[1] * [4]	方向角	夾角	距離
12-75K	-149581.759	-13.932	-41134.615	7.935	573087.456180	-1186931.257665	91-00-33	90-00-43	8.176
12-74	-149581.903	13.644	-41126.440	8.418	-561129.147360	-1259180.459454	1-00-35	90-00-02	13.790
12-91	-149568.115	13.932	-41126.197	-7.935	-572970.176604	1186822.992525	271-00-32	89-59-57	8.179
12-90K	-149567.971	-13.644	-41134.375	-8.418	561237.412500	1259063.179878	180-59-50	89-59-18	13.790
合計				倍面積 面積	225.544716 112.77	-225.544716 112.77			43.935

面積 (座標法) 計算書

地番 = 12-16

測点名	[1] X (i)	[2] X (i+1)-X (i-1)	[3] Y (i)	[4] Y (i+1)-Y (i-1)	[2] * [3]	[1] * [4]	方向角	夾角	距離
12-90K	-149567.971	13.823	-41134.375	-1.717	-568600.465625	256808.206207	271-01-29	90-01-39	1.957
12-89	-149567.936	-13.754	-41136.332	-2.197	565789.110328	328600.755392	180-59-50	89-58-21	13.791
12-76	-149581.725	-13.823	-41136.572	1.717	568630.834756	-256831.821825	90-59-43	89-59-53	1.957
12-75K	-149581.759	13.754	-41134.615	2.197	-565765.494710	-328631.124523	0-59-50	90-00-07	13.790
合計				倍面積 面積	53.984749 26.99	-53.984749 26.99			31.495

面積 (座標法) 計算書

地番 = 12-17
測点名

	[1] X (i)	[2] X (i+1)-X (i-1)	[3] Y (i)	[4] Y (i+1)-Y (i-1)	[2] * [3]	[1] * [4]	方向角	夾角	距離
12-77K	-149581.588	-13.926	-41144.477	7.663	572977.986702	-1146243.708844	90-59-34	89-59-14	7.906
12-76	-149581.725	13.652	-41136.572	8.145	-561596.480944	-1218343.150125	0-59-50	90-00-16	13.791
12-89	-149567.936	13.926	-41136.332	-7.663	-572864.559432	1146139.093568	270-59-35	89-59-45	7.904
12-88K	-149567.799	-13.652	-41144.235	-8.145	561701.096220	1218229.722855	181-00-20	90-00-45	13.791
合計				倍面積 面積	218.042546 109.02	-218.042546 109.02			43.392

面積 (座標法) 計算書

地番 = 12-18
測点名

	[1] X (i)	[2] X (i+1)-X (i-1)	[3] Y (i)	[4] Y (i+1)-Y (i-1)	[2] * [3]	[1] * [4]	方向角	夾角	距離
12-88K	-149567.799	13.822	-41144.235	-1.636	-568695.616170	244692.919164	271-00-24	90-00-04	1.878
12-87	-149567.766	-13.756	-41146.113	-2.120	566005.930428	317083.663920	181-00-20	89-59-56	13.791
12-78	-149581.555	-13.822	-41146.355	1.636	568724.918810	-244715.423980	91-00-24	90-00-04	1.878
12-77K	-149581.588	13.756	-41144.477	2.120	-565983.425612	-317112.966560	1-00-20	89-59-56	13.791
合計				倍面積 面積	51.807456 25.90	-51.807456 25.90			31.338

面積 (座標法) 計算書

地番 = 12-19
測点名

	[1] X (i)	[2] X (i+1)-X (i-1)	[3] Y (i)	[4] Y (i+1)-Y (i-1)	[2] * [3]	[1] * [4]	方向角	夾角	距離
12-79K	-149581.464	-13.884	-41151.863	5.262	571352.465892	-787097.663568	90-56-47	89-55-29	5.509
12-78	-149581.555	13.698	-41146.355	5.750	-563622.770790	-860093.941250	1-00-20	90-03-33	13.791
12-87	-149567.766	13.803	-41146.113	-0.589	-567939.797739	88095.414174	270-57-55	89-57-35	0.831
12-43	-149567.752	0.095	-41146.944	-5.504	-3908.959680	823220.907008	270-59-35	180-01-40	4.674
12-86K	-149567.671	-13.712	-41151.617	-4.919	564270.972304	735723.373649	181-01-18	90-01-43	13.795
合計				倍面積 面積	151.909987 75.95	-151.909987 75.95			38.600

面積 (座標法) 計算書

地番 = 12-20
測点名

	[1] X (i)	[2] X (i+1)-X (i-1)	[3] Y (i)	[4] Y (i+1)-Y (i-1)	[2] * [3]	[1] * [4]	方向角	夾角	距離
12-86K	-149567.671	13.820	-41151.617	-1.319	-568715.346940	197279.758049	270-59-18	89-58-00	1.565
12-85K	-149567.644	-13.767	-41153.182	-1.812	566555.856594	271016.570928	181-01-33	90-02-15	13.796
12-80	-149581.438	-13.820	-41153.429	1.319	568740.388780	-197297.916722	90-57-04	89-55-31	1.566
12-79K	-149581.464	13.767	-41151.863	1.812	-566537.697921	-271041.612768	1-01-18	90-04-14	13.795
合計				倍面積 面積	43.200513 21.60	-43.200513 21.60			30.722

面積 (座標法) 計算書

地番 = 12-21

測点名	[1] X (i)	[2] X (i+1)-X (i-1)	[3] Y (i)	[4] Y (i+1)-Y (i-1)	[2] * [3]	[1] * [4]	方向角	夾角	距離
12-80	-149581.438	13.624	-41153.429	9.705	-560674.316696	-1451687.855790	1-01-33	89-59-46	13.796
12-85K	-149567.644	13.959	-41153.182	-9.226	-574457.267538	1379911.083544	270-59-52	89-58-19	9.474
12-40	-149567.479	-3.093	-41162.655	-9.499	127316.091915	1420741.483021	180-27-26	89-27-34	3.258
12-100	-149570.737	-13.789	-41162.681	-0.232	567592.208309	34700.410984	181-07-14	180-39-48	10.533
12-30	-149581.268	-10.701	-41162.887	9.252	440484.053787	-1383925.891536	91-01-47	89-54-33	9.460
合計				倍面積 面積	260.769777 130.38	-260.769777 130.38			46.521

面積 (座標法) 計算書

地番 = 12-23

測点名	[1] X (i)	[2] X (i+1)-X (i-1)	[3] Y (i)	[4] Y (i+1)-Y (i-1)	[2] * [3]	[1] * [4]	方向角	夾角	距離
12-31	-149580.618	-18.553	-41200.206	9.450	764387.421918	-1413536.840100	90-57-03	89-59-07	9.761
12-106	-149580.780	-0.350	-41190.446	19.770	14416.656100	-2957212.020600	91-04-33	180-07-30	10.012
12-105	-149580.968	-0.488	-41180.436	27.559	20096.052768	-4122301.897112	90-58-46	179-54-13	17.552
12-30	-149581.268	10.231	-41162.887	17.755	-421137.496897	-2655815.413340	1-07-14	90-08-28	10.533
12-100	-149570.737	13.789	-41162.681	0.232	-567592.208309	-34700.410984	0-27-26	179-20-12	3.258
12-40	-149567.479	8.136	-41162.655	0.061	-334899.361080	-9123.616219	0-24-40	179-57-14	4.878
12-38	-149562.601	5.135	-41162.620	-25.872	-211370.053700	3869483.613072	270-34-06	90-09-26	25.908
12-83	-149562.344	0.303	-41188.527	-30.198	-12480.123681	4516483.664112	270-36-51	180-02-45	4.291
12-111	-149562.298	0.117	-41192.818	-11.369	-4819.559706	1700373.765962	270-34-29	179-57-38	7.078
12-57K	-149562.227	-18.320	-41199.896	-7.388	754782.094720	1104965.733076	180-57-56	90-23-27	18.394
合計				倍面積 面積	1383.422133 691.71	-1383.422133 691.71			111.665

面積 (座標法) 計算書

地番 = 12-24

測点名	[1] X (i)	[2] X (i+1)-X (i-1)	[3] Y (i)	[4] Y (i+1)-Y (i-1)	[2] * [3]	[1] * [4]	方向角	夾角	距離
12-31	-149580.618	18.280	-41200.206	7.077	-753139.765680	-1058582.033586	0-57-56	90-01-33	18.394
12-57K	-149562.227	18.401	-41199.896	-0.646	-758119.286296	96617.198642	270-35-58	89-38-02	0.956
12-65	-149562.217	0.091	-41200.852	-9.760	-3749.277532	1459727.237920	270-31-38	179-55-40	8.804
12-32	-149562.136	-15.234	-41209.656	-9.067	627787.899504	1356079.887112	180-59-02	90-27-24	15.317
12-8	-149577.451	-18.371	-41209.919	2.683	757067.421949	-401316.301033	136-03-00	135-03-58	4.245
12-7	-149580.507	-3.167	-41206.973	9.713	130502.483491	-1452875.464491	90-56-23	134-53-23	6.768
合計				倍面積 面積	349.475436 174.73	-349.475436 174.73			54.484

面積 (座標法) 計算書

地番 = 12-25
測点名

	[1] X (i)	[2] X (i+1)-X (i-1)	[3] Y (i)	[4] Y (i+1)-Y (i-1)	[2] * [3]	[1] * [4]	方向角	夾角	距離
12-67K	-149557.453	-4.602	-41209.563	-8.889	189646.408926	1329416.199717	181-08-16	90-36-37	4.684
12-32	-149562.136	-4.764	-41209.656	8.711	196322.801184	-1302835.766696	90-31-38	89-23-22	8.804
12-65	-149562.217	4.602	-41200.852	8.889	-189606.320904	-1329458.546913	1-02-23	90-30-45	4.684
12-68K	-149557.534	4.764	-41200.767	-8.711	-196280.453988	1302795.678674	270-31-39	89-29-16	8.796
合計				倍面積 面積	82.435218 41.21	-82.435218 41.21			26.968

面積 (座標法) 計算書

地番 = 12-26
測点名

	[1] X (i)	[2] X (i+1)-X (i-1)	[3] Y (i)	[4] Y (i+1)-Y (i-1)	[2] * [3]	[1] * [4]	方向角	夾角	距離
12-70	-149537.229	21.666	-41188.087	-11.935	-892381.092942	1784726.828115	254-25-35	73-25-22	12.847
12-63	-149540.678	-24.988	-41200.462	-12.765	1029517.144456	1908886.754670	181-02-14	106-36-39	21.543
12-65	-149562.217	-21.620	-41200.852	7.644	890762.420240	-1143253.586748	90-34-40	89-32-26	8.034
12-111	-149562.298	-0.127	-41192.818	12.325	5231.487886	-1843355.322850	90-36-51	180-02-11	4.291
12-83	-149562.344	25.069	-41188.527	4.731	-1032555.183363	-707579.449464	1-00-13	90-23-22	25.119
合計				倍面積 面積	574.776277 287.38	-574.776277 287.38			71.834