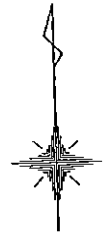
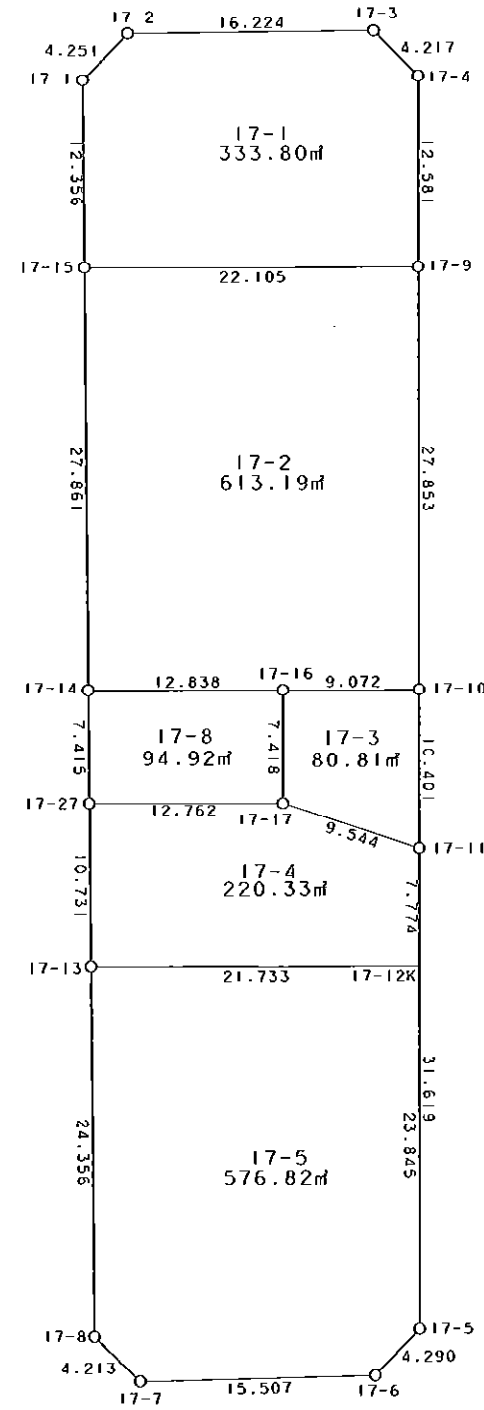


17街区



S = 1 / 500



凡 例

記号	名称
⊙	地区界点
○	街区点
○	画地点 (折れ点)
┆	画地点 (直線中)

面積 (座標法) 計算書

地番 = 17街区

測点名	[1] X (i)	[2] X (i+1)-X (i-1)	[3] Y (i)	[4] Y (i+1)-Y (i-1)	[2] * [3]	[1] * [4]	方向角	夾 角	距 離
17-2	-149650.557	-2.663	-41160.471	-19.288	109610.334273	2886459.943416	226-09-12	135-09-27	4.251
17-1	-149653.502	-15.299	-41163.537	-3.274	629760.952563	489965.565548	180-57-52	134-48-40	12.356
17-15	-149665.856	-40.210	-41163.745	-0.734	1655194.186450	109854.738304	181-04-54	180-07-02	27.861
17-14	-149693.712	-35.270	-41164.271	-0.649	1451863.838170	97151.219088	180-57-02	179-52-08	7.415
17-27	-149701.126	-18.143	-41164.394	-0.309	746845.600342	46257.647934	180-59-35	180-02-33	10.731
17-13	-149711.855	-35.081	-41164.580	-0.622	1444094.630980	93120.773810	181-01-33	180-01-58	24.356
17-8	-149736.207	-27.374	-41165.016	2.500	1126851.147984	-374340.517500	135-49-37	134-48-04	4.213
17-7	-149739.229	-3.080	-41162.080	18.443	126779.206400	-2761640.600447	90-12-51	134-23-14	15.507
17-6	-149739.287	2.927	-41146.573	18.588	-120436.019171	-2783353.866756	45-54-24	135-41-33	4.290
17-5	-149736.302	34.593	-41143.492	3.924	-1423276.818756	-587565.249048	1-31-40	135-37-16	31.619
17-11	-149704.694	42.005	-41142.649	1.123	-1728196.971245	-168118.371362	1-32-34	180-00-54	10.401
17-10	-149694.297	38.241	-41142.369	1.001	-1573325.332929	-149843.991297	1-29-00	179-56-26	27.853
17-9	-149666.453	40.421	-41141.648	1.045	-1662986.553808	-156401.443385	1-28-32	179-59-32	12.581
17-4	-149653.876	15.614	-41141.324	-2.601	-642380.632936	389249.731476	316-04-34	134-36-02	4.217
17-3	-149650.839	3.319	-41144.249	-19.147	-136557.762431	2865364.614333	270-59-45	134-55-11	16.224
合計					3839.805886	-3839.805886			213.875
				倍面積 面積	1919.90	1919.90			

地番	筆種別	面積	坪数
17-1	筆界	333.80	100.97
17-2	筆界	613.19	185.49
17-3	筆界	80.81	24.44
17-4	筆界	220.33	66.65
17-5	筆界	576.82	174.48
17-8	筆界	94.92	28.71
	筆合計	1919.87	580.74

面積 (座標法) 計算書

地番 = 17-1
測点名

	[1] X (i)	[2] X (i+1)-X (i-1)	[3] Y (i)	[4] Y (i+1)-Y (i-1)	[2] * [3]	[1] * [4]	方向角	夾角	距離
17-2	-149650.557	-2.663	-41160.471	-19.288	109610.334273	2886459.943416	226-09-12	135-09-27	4.251
17-1	-149653.502	-15.299	-41163.537	-3.274	629760.952563	489965.565548	180-57-52	134-48-40	12.356
17-15	-149665.856	-12.951	-41163.745	21.889	533111.661495	-3276035.921984	91-32-51	90-34-59	22.105
17-9	-149666.453	11.980	-41141.648	22.421	-492876.943040	-3355671.542713	1-28-32	89-55-41	12.581
17-4	-149653.876	15.614	-41141.324	-2.601	-642380.632936	389249.731476	316-04-34	134-36-02	4.217
17-3	-149650.839	3.319	-41144.249	-19.147	-136557.762431	2865364.614333	270-59-45	134-55-11	16.224
合計				倍面積 面積	667.609924 333.80	-667.609924 333.80			71.734

面積 (座標法) 計算書

地番 = 17-2
測点名

	[1] X (i)	[2] X (i+1)-X (i-1)	[3] Y (i)	[4] Y (i+1)-Y (i-1)	[2] * [3]	[1] * [4]	方向角	夾角	距離
17-15	-149665.856	-27.259	-41163.745	-22.623	1122082.524955	3385890.660288	181-04-54	89-32-03	27.861
17-14	-149693.712	-28.212	-41164.271	12.307	1161326.413452	-1842280.513584	91-35-21	90-30-27	12.838
17-16	-149694.068	-0.585	-41151.438	21.902	24073.591230	-3278599.477336	91-26-47	179-51-26	9.072
17-10	-149694.297	27.615	-41142.369	9.790	-1136146.519935	-1465507.167630	1-29-00	90-02-13	27.853
17-9	-149666.453	28.441	-41141.648	-21.376	-1170109.610768	3199270.099328	271-32-51	90-03-51	22.105
合計				倍面積 面積	1226.398934 613.19	-1226.398934 613.19			99.729

面積 (座標法) 計算書

地番 = 17-3
測点名

	[1] X (i)	[2] X (i+1)-X (i-1)	[3] Y (i)	[4] Y (i+1)-Y (i-1)	[2] * [3]	[1] * [4]	方向角	夾角	距離
17-16	-149694.068	-7.186	-41151.438	-9.268	295714.233468	1387364.622224	181-32-14	90-05-27	7.418
17-17	-149701.483	-10.626	-41151.637	8.789	437277.294762	-1315726.334087	109-39-34	108-07-20	9.544
17-11	-149704.694	7.186	-41142.649	9.268	-295651.075714	-1387463.103992	1-32-34	71-53-00	10.401
17-10	-149694.297	10.626	-41142.369	-8.789	-437178.812994	1315663.176333	271-26-47	89-54-13	9.072
合計				倍面積 面積	161.639522 80.81	-161.639522 80.81			36.435

面積 (座標法) 計算書

地番 = 17-4
測点名

	[1] X (i)	[2] X (i+1)-X (i-1)	[3] Y (i)	[4] Y (i+1)-Y (i-1)	[2] * [3]	[1] * [4]	方向角	夾角	距離
17-13	-149711.855	-11.339	-41164.580	21.538	466765.172620	-3224493.932990	91-36-30	90-36-55	21.733
17-12K	-149712.465	7.161	-41142.856	21.931	-294623.991816	-3283344.069915	1-31-33	89-55-03	7.774
17-11	-149704.694	10.982	-41142.649	-8.781	-451828.571318	1314556.918014	289-39-34	108-08-01	9.544
17-17	-149701.483	3.568	-41151.637	-21.745	-146829.040816	3255258.747835	271-36-11	161-56-37	12.762
17-27	-149701.126	-10.372	-41164.394	-12.943	426957.094568	1937581.673818	180-59-35	89-23-24	10.731
合計				倍面積 面積	440.663238 220.33	-440.663238 220.33			62.544

面積 (座標法) 計算書

地番 = 17-5
測点名

	[1] X (i)	[2] X (i+1)-X (i-1)	[3] Y (i)	[4] Y (i+1)-Y (i-1)	[2] * [3]	[1] * [4]	方向角	夾角	距離
17-13	-149711.855	-23.742	-41164.580	-22.160	977329.458360	3317614.706800	181-01-33	89-25-03	24.356
17-8	-149736.207	-27.374	-41165.016	2.500	1126851.147984	-374340.517500	135-49-37	134-48-04	4.213
17-7	-149739.229	-3.080	-41162.080	18.443	126779.206400	-2761640.600447	90-12-51	134-23-14	15.507
17-6	-149739.287	2.927	-41146.573	18.588	-120436.019171	-2783353.866756	45-54-24	135-41-33	4.290
17-5	-149736.302	26.822	-41143.492	3.717	-1103550.742424	-556569.834534	1-31-42	135-37-18	23.845
17-12K	-149712.465	24.447	-41142.856	-21.088	-1005819.400632	3157136.461920	271-36-30	90-04-48	21.733
合計				倍面積 面積	1153.650517 576.82	-1153.650517 576.82			93.944

面積 (座標法) 計算書

地番 = 17-8
測点名

	[1] X (i)	[2] X (i+1)-X (i-1)	[3] Y (i)	[4] Y (i+1)-Y (i-1)	[2] * [3]	[1] * [4]	方向角	夾角	距離
17-14	-149693.712	-7.058	-41164.271	-12.956	290537.424718	1939431.732672	180-57-02	89-21-41	7.415
17-27	-149701.126	-7.771	-41164.394	12.634	319888.505774	-1891324.025884	91-36-11	90-39-09	12.762
17-17	-149701.483	7.058	-41151.637	12.956	-290448.253946	-1939532.413748	1-32-14	89-56-03	7.418
17-16	-149694.068	7.771	-41151.438	-12.634	-319787.824698	1891234.855112	271-35-21	90-03-07	12.838
合計				倍面積 面積	189.851848 94.92	-189.851848 94.92			40.433