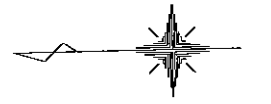
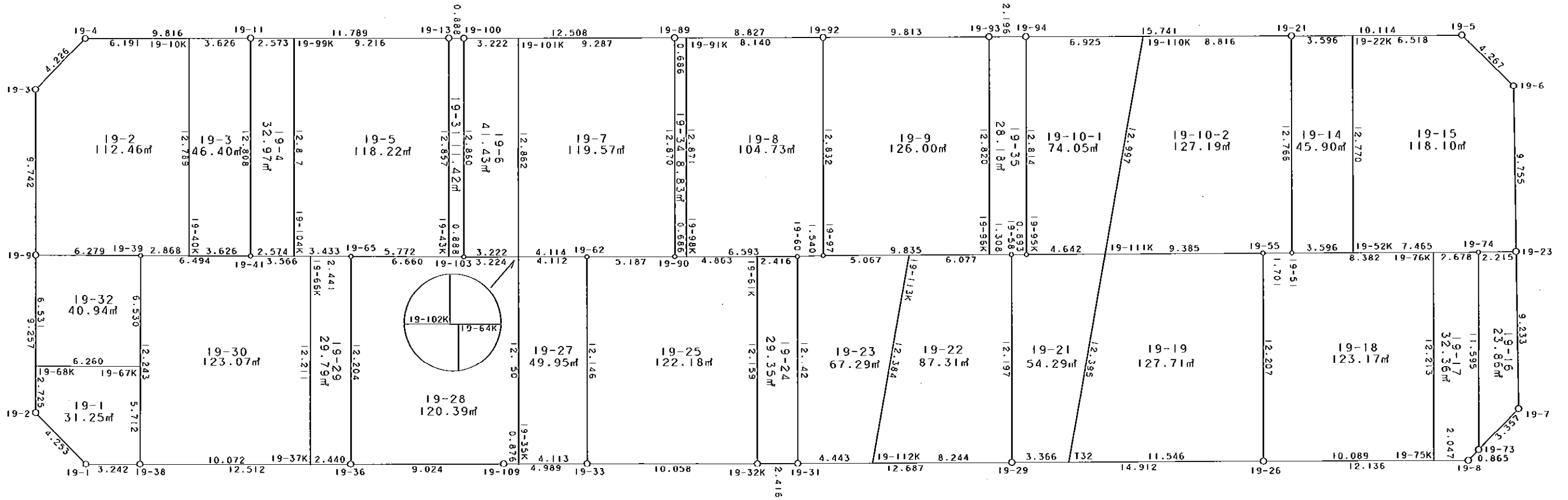


西部第4地区土地区画整理事業 出来形確認測量 (原子図)

19街区



S = 1 / 250



凡 例

記号	名称
⊙	地区界点
○	街区点
○	画地点 (折れ点)
┌	画地点 (直線中)

面積 (座標法) 計算書

地番 = 19街区

測点名	[1] X (i)	[2] X (i+1)-X (i-1)	[3] Y (i)	[4] Y (i+1)-Y (i-1)	[2] * [3]	[1] * [4]	方向角	夾 角	距 離
19-2	-149651.609	-2.780	-41100.786	-12.321	114260.185080	1843857.474489	226-08-02	135-06-00	4.253
19-1	-149654.556	-6.188	-41103.852	-3.131	254350.636176	468568.414836	181-08-56	135-00-54	3.242
19-38	-149657.797	-15.751	-41103.917	-0.310	647427.796667	46393.917070	181-07-19	179-58-23	12.512
19-36	-149670.307	-21.533	-41104.162	-0.396	885095.920346	59269.441572	180-57-32	179-50-13	9.024
19-109	-149679.330	-14.011	-41104.313	-0.245	575912.529443	36671.435850	181-04-47	180-07-15	4.989
19-33	-149684.318	-15.044	-41104.407	-0.308	618374.698908	46102.769944	181-13-09	180-08-22	10.058
19-32K	-149694.374	-12.472	-41104.621	-0.245	512656.833112	36675.121630	180-44-06	179-30-57	2.416
19-31	-149696.790	-15.101	-41104.652	-0.243	620721.349852	36376.319970	180-57-27	180-13-21	12.687
19-29	-149709.475	-27.595	-41104.864	-0.458	1134288.722080	68566.939550	180-56-43	179-59-16	14.912
19-26	-149724.385	-27.044	-41105.110	-0.470	1111646.594840	70370.460950	181-03-27	180-06-44	12.136
19-8	-149736.519	-12.751	-41105.334	0.382	524134.113834	-57199.350258	135-30-55	134-27-28	0.865
19-73	-149737.136	-3.017	-41104.728	2.953	124012.964376	-442173.762608	135-38-23	180-07-28	3.357
19-7	-149739.536	-2.445	-41102.381	11.580	100495.321545	-1733983.826880	90-16-45	134-38-22	9.233
19-23	-149739.581	-0.095	-41093.148	18.988	3903.849060	-2843255.164028	90-17-37	180-00-52	9.755
19-6	-149739.631	2.935	-41083.393	12.804	-120579.758455	-1917266.235324	45-36-28	135-18-51	4.267
19-5	-149736.646	13.097	-41080.344	3.227	-538029.265368	-483200.156642	1-00-30	135-24-02	10.114
19-21	-149726.534	25.850	-41080.166	0.473	-1061922.291100	-70820.650582	1-04-26	180-03-56	15.741
19-94	-149710.796	17.934	-41079.871	0.336	-736726.406514	-50302.827456	1-04-11	179-59-45	2.196
19-93	-149708.600	12.008	-41079.830	0.208	-493286.598640	-31139.388800	0-58-30	179-54-19	9.813
19-92	-149698.788	18.637	-41079.663	0.331	-765601.679331	-49550.298828	1-03-53	180-05-23	8.827
19-89	-149689.963	21.331	-41079.499	0.402	-876266.793169	-60175.365126	1-05-25	180-01-32	12.508
19-100	-149677.457	13.394	-41079.261	0.256	-550215.621834	-38317.428992	1-09-40	180-04-15	0.888
19-13	-149676.569	12.675	-41079.243	0.243	-520679.405025	-36371.406267	1-05-37	179-55-57	11.789
19-11	-149664.782	21.602	-41079.018	0.396	-887388.946836	-59267.253672	0-59-53	179-54-16	9.816
19-4	-149654.967	12.848	-41078.847	-2.772	-527781.026256	414843.568524	315-51-46	134-51-53	4.226
19-3	-149651.934	3.191	-41081.790	-12.684	-131091.991890	1898185.130856	270-55-45	135-03-59	9.742
19-9	-149651.776	0.325	-41091.531	-18.996	-13354.747575	2842785.136896	271-02-02	180-06-17	9.257
合計				倍面積 面積	4356.983326 2178.49	-4356.983326 2178.49			218.623

地番	筆種別	面積	坪数
19-1	筆界	31.25	9.45
19-2	筆界	112.46	34.01
19-3	筆界	46.40	14.03
19-4	筆界	32.97	9.97
19-5	筆界	118.22	35.76
19-6	筆界	41.43	12.53
19-7	筆界	119.57	36.17
19-8	筆界	104.73	31.68
19-9	筆界	126.00	38.11
19-10-1	筆界	74.05	22.40
19-10-2	筆界	127.19	38.47
19-14	筆界	45.90	13.88
19-15	筆界	118.10	35.72
19-16	筆界	23.86	7.21
19-17	筆界	32.36	9.79
19-18	筆界	123.17	37.26
19-19	筆界	127.71	38.63
19-21	筆界	54.29	16.42
19-22	筆界	87.31	26.41
19-23	筆界	67.29	20.35
19-24	筆界	29.35	8.88
19-25	筆界	122.18	36.95
19-27	筆界	49.95	15.11
19-28	筆界	120.39	36.42
19-29	筆界	29.79	9.01
19-30	筆界	123.07	37.23
19-31	筆界	11.42	3.45
19-32	筆界	40.94	12.38
19-34	筆界	8.83	2.67
19-35	筆合	28.18	8.52
		2178.36	658.87

面積 (座標法) 計算書

地番 = 19-1

測点名	[1] X (i)	[2] X (i+1)-X (i-1)	[3] Y (i)	[4] Y (i+1)-Y (i-1)	[2]*[3]	[1]*[4]	方向角	夾角	距離
19-68K	-149651.658	6.307	-41098.061	-2.580	-259205.470727	386101.277640	271-01-49	89-42-11	2.725
19-2	-149651.609	-2.898	-41100.786	-5.791	119110.077828	866632.467719	226-08-02	135-06-13	4.253
19-1	-149654.556	-6.188	-41103.852	-3.131	254350.636176	468568.414836	181-08-56	135-00-54	3.242
19-38	-149657.797	-3.360	-41103.917	5.646	138109.161120	-844967.921862	91-11-37	90-02-41	5.712
19-67K	-149657.916	6.139	-41098.206	5.856	-252301.886634	-876396.756096	1-19-38	90-08-01	6.260
合計				倍面積 面積	62.517763 31.25	-62.517763 31.25			22.192

面積 (座標法) 計算書

地番 = 19-2

測点名	[1] X (i)	[2] X (i+1)-X (i-1)	[3] Y (i)	[4] Y (i+1)-Y (i-1)	[2]*[3]	[1]*[4]	方向角	夾角	距離
19-10K	-149661.157	5.953	-41078.955	12.895	-244543.019115	-1929880.619515	0-59-58	89-56-15	6.191
19-4	-149654.967	9.223	-41078.847	-2.835	-378870.205881	424271.831445	315-51-46	134-51-48	4.226
19-3	-149651.934	3.191	-41081.790	-12.684	-131091.991890	1898185.130856	270-55-45	135-03-59	9.742
19-9	-149651.776	-6.119	-41091.531	-9.887	251439.078189	1479607.109312	181-19-57	90-24-12	6.279
19-39	-149658.053	-9.144	-41091.677	-0.211	375742.294488	31577.849183	181-17-56	179-57-59	2.868
19-40K	-149660.920	-3.104	-41091.742	12.722	127548.767168	-1903986.224240	91-03-43	89-45-47	12.789
合計				倍面積 面積	224.922959 112.46	-224.922959 112.46			42.095

面積 (座標法) 計算書

地番 = 19-3

測点名	[1] X (i)	[2] X (i+1)-X (i-1)	[3] Y (i)	[4] Y (i+1)-Y (i-1)	[2]*[3]	[1]*[4]	方向角	夾角	距離
19-40K	-149660.920	-3.388	-41091.742	-12.869	139218.821896	1925986.379480	181-17-45	90-14-02	3.626
19-41	-149664.545	-3.862	-41091.824	12.724	158696.624288	-1904331.670580	91-03-37	89-45-52	12.808
19-11	-149664.782	3.388	-41079.018	12.869	-139175.712984	-1926036.079558	0-59-44	89-56-07	3.626
19-10K	-149661.157	3.862	-41078.955	-12.724	-158646.924210	1904288.561668	271-03-43	90-03-59	12.789
合計				倍面積 面積	92.808990 46.40	-92.808990 46.40			32.849

面積 (座標法) 計算書

地番 = 19-4

測点名	[1] X (i)	[2] X (i+1)-X (i-1)	[3] Y (i)	[4] Y (i+1)-Y (i-1)	[2]*[3]	[1]*[4]	方向角	夾角	距離
19-99K	-149667.355	2.336	-41079.067	12.864	-95960.700512	-1925320.854720	1-05-28	90-01-54	2.573
19-11	-149664.782	2.810	-41079.018	-12.757	-115432.040580	1909273.623974	271-03-37	89-58-09	12.808
19-41	-149664.545	-2.336	-41091.824	-12.864	95990.500864	1925284.706880	181-17-29	90-13-52	2.574
19-104K	-149667.118	-2.810	-41091.882	12.757	115468.188420	-1909303.424326	91-03-34	89-46-05	12.817
合計				倍面積 面積	65.948192 32.97	-65.948192 32.97			30.772

面積 (座標法) 計算書

地番 = 19-5

測点名	[1] X (i)	[2] X (i+1)-X (i-1)	[3] Y (i)	[4] Y (i+1)-Y (i-1)	[2] * [3]	[1] * [4]	方向角	夾角	距離
19-104K	-149667.118	-3.195	-41091.882	-12.893	131288.562990	1929658.152374	181-18-07	90-14-33	3.433
19-65	-149670.550	-9.202	-41091.960	-0.216	378128.215920	32328.838800	181-22-12	180-04-05	5.772
19-43K	-149676.320	-6.019	-41092.098	12.717	247333.337862	-1903433.761440	91-06-35	89-44-23	12.857
19-13	-149676.569	8.965	-41079.243	13.031	-368275.413495	-1950435.370639	1-05-39	89-59-04	9.216
19-99K	-149667.355	9.451	-41079.067	-12.639	-388238.262217	1891645.699845	271-03-34	89-57-55	12.817
合計				倍面積 面積	236.441060 118.22	-236.441060 118.22			44.095

面積 (座標法) 計算書

地番 = 19-6

測点名	[1] X (i)	[2] X (i+1)-X (i-1)	[3] Y (i)	[4] Y (i+1)-Y (i-1)	[2] * [3]	[1] * [4]	方向角	夾角	距離
19-101K	-149680.678	2.972	-41079.322	12.921	-122087.744984	-1934024.040438	1-05-06	89-58-33	3.222
19-100	-149677.457	3.470	-41079.261	-12.797	-142545.035670	1915422.417229	271-06-34	90-01-28	12.860
19-103	-149677.208	-2.972	-41092.119	-12.921	122125.777668	1933979.204568	181-07-14	90-00-40	3.222
19-102K	-149680.429	-3.470	-41092.182	12.797	142589.871540	-1915460.449913	91-06-33	89-59-19	12.862
合計				倍面積 面積	82.868554 41.43	-82.868554 41.43			32.166

面積 (座標法) 計算書

地番 = 19-7

測点名	[1] X (i)	[2] X (i+1)-X (i-1)	[3] Y (i)	[4] Y (i+1)-Y (i-1)	[2] * [3]	[1] * [4]	方向角	夾角	距離
19-102K	-149680.429	-3.864	-41092.182	-12.941	158780.191248	1937014.431689	181-07-42	90-01-09	4.114
19-62	-149684.542	-9.299	-41092.263	-0.185	382116.953637	27691.640270	181-08-56	180-01-14	5.187
19-90	-149689.728	-5.421	-41092.367	12.764	222761.721507	-1910639.688192	91-02-46	89-53-50	12.870
19-89	-149689.963	9.050	-41079.499	13.045	-371769.465950	-1952705.567335	1-05-32	90-02-46	9.287
19-101K	-149680.678	9.534	-41079.322	-12.683	-391650.255948	1898400.039074	271-06-33	90-01-01	12.862
合計				倍面積 面積	239.144494 119.57	-239.144494 119.57			44.320

面積 (座標法) 計算書

地番 = 19-8

測点名	[1] X (i)	[2] X (i+1)-X (i-1)	[3] Y (i)	[4] Y (i+1)-Y (i-1)	[2] * [3]	[1] * [4]	方向角	夾角	距離
19-98K	-149690.414	-6.357	-41092.381	-13.000	261224.266017	1945975.382000	181-08-18	90-05-32	6.593
19-60	-149697.006	-8.132	-41092.512	-0.112	334164.307584	16766.064672	179-17-35	178-09-17	1.540
19-97	-149698.546	-1.782	-41092.493	12.849	73226.822526	-1923476.617554	91-04-50	91-47-15	12.832
19-92	-149698.788	7.897	-41079.663	12.981	-324406.098711	-1943239.967028	1-03-46	89-58-56	8.140
19-91K	-149690.649	8.374	-41079.512	-12.718	-343999.833488	1903765.673982	271-02-46	89-59-00	12.871
合計				倍面積 面積	209.463928 104.73	-209.463928 104.73			41.976

面積 (座標法) 計算書

地番 = 19-9

測点名	[1] X (i)	[2] X (i+1)-X (i-1)	[3] Y (i)	[4] Y (i+1)-Y (i-1)	[2] * [3]	[1] * [4]	方向角	夾角	距離
19-93	-149708.600	9.592	-41079.830	12.985	-394037.729360	-1943966.171000	0-58-30	89-59-30	9.813
19-92	-149698.788	10.054	-41079.663	-12.663	-413014.931802	1895635.752444	271-04-50	90-06-20	12.832
19-97	-149698.546	-9.592	-41092.493	-12.985	394159.192856	1943835.619810	180-54-11	89-49-21	9.835
19-96K	-149708.380	-10.054	-41092.648	12.663	413145.482992	-1895757.215940	90-59-00	90-04-49	12.820
合計				倍面積 面積	252.014686 126.00	-252.014686 126.00			45.300

面積 (座標法) 計算書

地番 = 19-10-1

測点名	[1] X (i)	[2] X (i+1)-X (i-1)	[3] Y (i)	[4] Y (i+1)-Y (i-1)	[2] * [3]	[1] * [4]	方向角	夾角	距離
19-95K	-149710.581	-4.426	-41092.683	-12.885	181876.214958	1929020.836185	180-54-04	89-56-23	4.642
19-111K	-149715.222	-7.139	-41092.756	12.682	293361.185084	-1898688.445404	101-04-51	100-10-47	12.997
19-110K	-149717.720	4.426	-41080.001	12.885	-181820.084426	-1929112.822200	1-04-32	79-59-41	6.925
19-94	-149710.796	7.139	-41079.871	-12.682	-293269.199069	1898632.314872	270-57-41	89-53-09	12.814
合計				倍面積 面積	148.116547 74.05	-148.116547 74.05			37.378

面積 (座標法) 計算書

地番 = 19-10-2

測点名	[1] X (i)	[2] X (i+1)-X (i-1)	[3] Y (i)	[4] Y (i+1)-Y (i-1)	[2] * [3]	[1] * [4]	方向角	夾角	距離
19-111K	-149715.222	-6.886	-41092.756	-12.904	282964.717816	1931925.224688	180-54-35	79-49-44	9.385
19-55	-149724.606	-11.085	-41092.905	-0.174	455514.851925	26052.081444	180-50-31	179-55-56	1.701
19-51	-149726.307	-1.928	-41092.930	12.739	79227.169040	-1907363.424873	91-01-08	90-10-37	12.766
19-21	-149726.534	8.587	-41080.166	12.929	-352755.385442	-1935814.358086	1-04-21	90-03-13	8.816
19-110K	-149717.720	11.312	-41080.001	-12.590	-464696.971312	1884946.094800	281-04-51	100-00-30	12.997
合計				倍面積 面積	254.382027 127.19	-254.382027 127.19			45.665

面積 (座標法) 計算書

地番 = 19-14

測点名	[1] X (i)	[2] X (i+1)-X (i-1)	[3] Y (i)	[4] Y (i+1)-Y (i-1)	[2] * [3]	[1] * [4]	方向角	夾角	距離
19-22K	-149730.129	3.368	-41080.229	12.831	-138358.211272	-1921187.285199	1-00-14	89-59-07	3.596
19-21	-149726.534	3.822	-41080.166	-12.701	-157008.394452	1901676.708334	271-01-08	90-00-54	12.766
19-51	-149726.307	-3.368	-41092.930	-12.831	138400.988240	1921138.245117	181-04-04	90-02-56	3.596
19-52K	-149729.902	-3.822	-41092.997	12.701	157057.434534	-1901719.485302	91-01-07	89-57-03	12.770
合計				倍面積 面積	91.817050 45.90	-91.817050 45.90			32.728

面積 (座標法) 計算書

地番 = 19-15

測点名	[1] X (i)	[2] X (i+1)-X (i-1)	[3] Y (i)	[4] Y (i+1)-Y (i-1)	[2] * [3]	[1] * [4]	方向角	夾角	距離
19-52K	-149729.902	-7.237	-41092.997	-12.906	297390.019289	1932414.115212	181-03-33	90-02-26	7.465
19-74	-149737.366	-9.679	-41093.135	-0.151	397740.453665	22610.342266	180-20-11	179-16-38	2.215
19-23	-149739.581	-2.265	-41093.148	9.742	93075.980220	-1458762.998102	90-17-37	89-57-26	9.755
19-6	-149739.631	2.935	-41083.393	12.804	-120579.758455	-1917266.235324	45-36-28	135-18-51	4.267
19-5	-149736.646	9.502	-41080.344	3.164	-390345.428688	-473766.747944	1-00-39	135-24-11	6.518
19-22K	-149730.129	6.744	-41080.229	-12.653	-277045.064376	1894535.322237	271-01-07	90-00-28	12.770
合計				倍面積 面積	236.201655 118.10	-236.201655 118.10			42.990

面積 (座標法) 計算書

地番 = 19-16

測点名	[1] X (i)	[2] X (i+1)-X (i-1)	[3] Y (i)	[4] Y (i+1)-Y (i-1)	[2] * [3]	[1] * [4]	方向角	夾角	距離
19-74	-149737.366	2.445	-41093.135	-11.580	-100472.715075	1733958.698280	271-08-12	90-48-01	11.595
19-73	-149737.136	-2.170	-41104.728	-9.246	89197.259760	1384469.559456	135-38-23	44-30-11	3.357
19-7	-149739.536	-2.445	-41102.381	11.580	100495.321545	-1733983.826880	90-16-45	134-38-22	9.233
19-23	-149739.581	2.170	-41093.148	9.246	-89172.131160	-1384492.165926	0-20-11	90-03-26	2.215
合計				倍面積 面積	47.735070 23.86	-47.735070 23.86			26.400

面積 (座標法) 計算書

地番 = 19-17

測点名	[1] X (i)	[2] X (i+1)-X (i-1)	[3] Y (i)	[4] Y (i+1)-Y (i-1)	[2] * [3]	[1] * [4]	方向角	夾角	距離
19-75K	-149734.472	-1.831	-41105.296	-12.249	75263.796976	1834097.547528	181-03-49	90-03-01	2.047
19-8	-149736.519	-2.664	-41105.334	0.568	109504.609776	-85050.342792	135-30-55	134-27-06	0.865
19-73	-149737.136	-0.847	-41104.728	12.199	34815.704616	-1826643.322064	91-08-12	135-37-17	11.595
19-74	-149737.366	2.448	-41093.135	11.643	-100595.994480	-1743392.152338	1-04-11	89-55-59	2.678
19-76K	-149734.688	2.894	-41093.085	-12.161	-118923.387990	1820923.540768	271-00-48	89-56-37	12.213
合計				倍面積 面積	64.728898 32.36	-64.728898 32.36			29.398

面積 (座標法) 計算書

地番 = 19-18

測点名	[1] X (i)	[2] X (i+1)-X (i-1)	[3] Y (i)	[4] Y (i+1)-Y (i-1)	[2] * [3]	[1] * [4]	方向角	夾角	距離
19-75K	-149734.472	-10.303	-41105.296	12.025	423507.864688	-1800557.025800	91-00-48	89-57-25	12.213
19-76K	-149734.688	8.165	-41093.085	12.366	-335525.039025	-1851619.151808	1-03-34	90-02-46	8.382
19-51	-149726.307	10.082	-41092.930	0.180	-414298.920260	-26950.735260	0-50-31	179-46-57	1.701
19-55	-149724.606	1.922	-41092.905	-12.180	-78980.563410	1823645.701080	271-02-14	90-11-43	12.207
19-26	-149724.385	-9.866	-41105.110	-12.391	405543.015260	1855234.854535	181-03-23	90-01-09	10.089
合計				倍面積 面積	246.357253 123.17	-246.357253 123.17			44.592

面積 (座標法) 計算書

地番 = 19-19
測点名

	[1] X (i)	[2] X (i+1)-X (i-1)	[3] Y (i)	[4] Y (i+1)-Y (i-1)	[2] * [3]	[1] * [4]	方向角	夾角	距離
T32	-149712.841	-9.163	-41104.920	-12.354	376644.381960	1849552.437714	180-56-35	79-52-05	11.546
19-26	-149724.385	-11.765	-41105.110	12.015	483601.619150	-1798938.485775	91-02-14	90-05-39	12.207
19-55	-149724.606	9.163	-41092.905	12.354	-376534.288515	-1849697.782524	0-54-35	89-52-21	9.385
19-111K	-149715.222	11.765	-41092.756	-12.015	-483456.274340	1798828.392330	281-04-30	100-09-55	12.395
合計				倍面積 面積	255.438255 127.71	-255.438255 127.71			45.533

面積 (座標法) 計算書

地番 = 19-21
測点名

	[1] X (i)	[2] X (i+1)-X (i-1)	[3] Y (i)	[4] Y (i+1)-Y (i-1)	[2] * [3]	[1] * [4]	方向角	夾角	距離
19-29	-149709.475	-3.153	-41104.864	-12.251	129603.636192	1834090.778225	180-57-11	89-57-09	3.366
T32	-149712.841	-5.747	-41104.920	12.108	236229.975240	-1812723.078828	101-04-30	100-07-19	12.395
19-111K	-149715.222	2.260	-41092.756	12.237	-92869.628560	-1832065.171614	0-54-04	79-49-34	4.642
19-95K	-149710.581	5.534	-41092.683	0.087	-227406.907722	-13024.820547	0-53-53	179-59-49	0.893
19-58	-149709.688	1.106	-41092.669	-12.181	-45448.491914	1823613.709528	271-00-02	90-06-09	12.197
合計				倍面積 面積	108.583236 54.29	-108.583236 54.29			33.493

面積 (座標法) 計算書

地番 = 19-22
測点名

	[1] X (i)	[2] X (i+1)-X (i-1)	[3] Y (i)	[4] Y (i+1)-Y (i-1)	[2] * [3]	[1] * [4]	方向角	夾角	距離
19-112K	-149701.232	-5.863	-41104.726	-12.291	240997.008538	1839977.842512	180-57-33	79-52-44	8.244
19-29	-149709.475	-8.456	-41104.864	12.057	347582.729984	-1805047.140075	91-00-02	90-02-29	12.197
19-58	-149709.688	5.863	-41092.669	12.291	-240926.318347	-1840081.775208	0-54-19	89-54-17	6.077
19-113K	-149703.612	8.456	-41092.573	-12.057	-347478.797288	1804976.449884	281-04-49	100-10-30	12.384
合計				倍面積 面積	174.622887 87.31	-174.622887 87.31			38.902

面積 (座標法) 計算書

地番 = 19-23
測点名

	[1] X (i)	[2] X (i+1)-X (i-1)	[3] Y (i)	[4] Y (i+1)-Y (i-1)	[2] * [3]	[1] * [4]	方向角	夾角	距離
19-113K	-149703.612	2.686	-41092.573	12.233	-110374.651078	-1831324.285596	0-54-17	79-49-28	5.067
19-97	-149698.546	6.606	-41092.493	0.061	-271457.008758	-9131.611306	359-17-35	178-23-18	1.540
19-60	-149697.006	1.756	-41092.512	-12.159	-72158.451072	1820165.895954	271-01-10	91-43-35	12.142
19-31	-149696.790	-4.226	-41104.652	-12.214	173708.259352	1828396.593060	180-57-16	89-56-06	4.443
19-112K	-149701.232	-6.822	-41104.726	12.079	280416.440772	-1808241.181328	101-04-49	100-07-33	12.384
合計				倍面積 面積	134.589216 67.29	-134.589216 67.29			35.576

面積 (座標法) 計算書

地番 = 19-24
測点名

	[1] X (i)	[2] X (i+1)-X (i-1)	[3] Y (i)	[4] Y (i+1)-Y (i-1)	[2]*[3]	[1]*[4]	方向角	夾角	距離
19-32K	-149694.374	-2.200	-41104.621	-12.188	90430.166200	1824475.030312	180-44-06	89-43-02	2.416
19-31	-149696.790	-2.632	-41104.652	12.109	108187.444064	-1812678.430110	91-01-10	90-17-04	12.142
19-60	-149697.006	2.200	-41092.512	12.188	-90403.526400	-1824507.109128	1-08-17	90-07-07	2.416
19-61K	-149694.590	2.632	-41092.464	-12.109	-108155.365248	1812651.790310	271-01-04	89-52-47	12.159
合計				倍面積 面積	58.718616 29.35	-58.718616 29.35			29.133

面積 (座標法) 計算書

地番 = 19-25
測点名

	[1] X (i)	[2] X (i+1)-X (i-1)	[3] Y (i)	[4] Y (i+1)-Y (i-1)	[2]*[3]	[1]*[4]	方向角	夾角	距離
19-61K	-149694.590	4.646	-41092.464	12.254	-190915.587744	-1834357.505860	1-08-35	90-07-31	4.863
19-90	-149689.728	10.048	-41092.367	0.201	-412896.103616	-30087.635328	1-08-56	180-00-21	5.187
19-62	-149684.542	5.410	-41092.263	-12.040	-222309.142830	1802201.885680	271-03-24	89-54-28	12.146
19-33	-149684.318	-9.832	-41104.407	-12.358	404138.529624	1849798.801844	181-13-09	90-09-45	10.058
19-32K	-149694.374	-10.272	-41104.621	11.943	422226.666912	-1787799.908682	91-01-04	89-47-55	12.159
合計				倍面積 面積	244.362346 122.18	-244.362346 122.18			44.413

面積 (座標法) 計算書

地番 = 19-27
測点名

	[1] X (i)	[2] X (i+1)-X (i-1)	[3] Y (i)	[4] Y (i+1)-Y (i-1)	[2]*[3]	[1]*[4]	方向角	夾角	距離
19-35K	-149680.206	-3.887	-41104.330	-12.225	159772.530710	1829840.518350	181-04-22	90-00-42	4.113
19-33	-149684.318	-4.336	-41104.407	12.067	178228.708752	-1806240.665306	91-03-24	89-59-02	12.146
19-62	-149684.542	3.887	-41092.263	12.225	-159725.626281	-1829893.525950	1-07-44	90-04-20	4.112
19-64K	-149680.431	4.336	-41092.182	-12.067	-178175.701152	1806193.760877	271-03-40	89-55-56	12.150
合計				倍面積 面積	99.912029 49.95	-99.912029 49.95			32.521

面積 (座標法) 計算書

地番 = 19-28
測点名

	[1] X (i)	[2] X (i+1)-X (i-1)	[3] Y (i)	[4] Y (i+1)-Y (i-1)	[2]*[3]	[1]*[4]	方向角	夾角	距離
19-64K	-149680.431	2.998	-41092.182	12.211	-123194.361636	-1827747.742941	1-07-11	90-03-31	3.224
19-103	-149677.208	9.881	-41092.119	0.222	-406031.227839	-33228.340176	1-22-05	180-14-54	6.660
19-65	-149670.550	6.901	-41091.960	-12.043	-283575.615960	1802482.433650	271-08-27	89-46-22	12.204
19-36	-149670.307	-8.780	-41104.162	-12.353	360894.542360	1848877.302371	180-57-32	89-49-05	9.024
19-109	-149679.330	-9.899	-41104.313	-0.168	406891.594387	25146.127440	181-06-42	180-09-10	0.876
19-35K	-149680.206	-1.101	-41104.330	12.131	45255.867330	-1815770.578986	91-03-40	89-56-58	12.150
合計				倍面積 面積	240.798642 120.39	-240.798642 120.39			44.138

面積 (座標法) 計算書

地番 = 19-29

測点名	[1] X (i)	[2] X (i+1)-X (i-1)	[3] Y (i)	[4] Y (i+1)-Y (i-1)	[2] * [3]	[1] * [4]	方向角	夾角	距離
19-37K	-149667.867	-2.197	-41104.114	-12.257	90305.738458	1834479.045819	181-07-37	89-59-12	2.440
19-36	-149670.307	-2.683	-41104.162	12.154	110282.466646	-1819092.911278	91-08-27	90-00-50	12.204
19-65	-149670.550	2.197	-41091.960	12.257	-90279.036120	-1834511.931350	1-17-29	90-09-02	2.441
19-66K	-149668.110	2.683	-41091.905	-12.154	-110249.581115	1819066.208940	271-08-25	89-50-56	12.211
合計				倍面積 面積	59.587869 29.79	-59.587869 29.79			29.296

面積 (座標法) 計算書

地番 = 19-30

測点名	[1] X (i)	[2] X (i+1)-X (i-1)	[3] Y (i)	[4] Y (i+1)-Y (i-1)	[2] * [3]	[1] * [4]	方向角	夾角	距離
19-66K	-149668.110	3.322	-41091.905	12.290	-136507.308410	-1839421.071900	1-18-06	90-09-41	3.566
19-41	-149664.545	10.057	-41091.824	0.228	-413260.473968	-34123.516260	1-17-50	179-59-44	6.494
19-39	-149658.053	6.748	-41091.677	-12.093	-277286.636396	1809814.834929	271-11-53	89-54-03	12.243
19-38	-149657.797	-9.814	-41103.917	-12.437	403393.841438	1861294.021289	181-07-15	89-55-22	10.072
19-37K	-149667.867	-10.313	-41104.114	12.012	423906.727682	-1797810.418404	91-08-25	90-01-10	12.211
合計				倍面積 面積	246.150346 123.07	-246.150346 123.07			44.586

面積 (座標法) 計算書

地番 = 19-31

測点名	[1] X (i)	[2] X (i+1)-X (i-1)	[3] Y (i)	[4] Y (i+1)-Y (i-1)	[2] * [3]	[1] * [4]	方向角	夾角	距離
19-13	-149676.569	1.137	-41079.243	-12.837	-46707.099291	1921398.116253	271-06-35	89-56-55	12.857
19-43K	-149676.320	-0.639	-41092.098	-12.876	26257.850622	1927232.296320	181-21-17	90-14-42	0.888
19-103	-149677.208	-1.137	-41092.119	12.837	46721.739303	-1921406.319096	91-06-34	89-45-17	12.860
19-100	-149677.457	0.639	-41079.261	12.876	-26249.647779	-1927246.936332	1-09-40	90-03-06	0.888
合計				倍面積 面積	22.842855 11.42	-22.842855 11.42			27.493

面積 (座標法) 計算書

地番 = 19-32

測点名	[1] X (i)	[2] X (i+1)-X (i-1)	[3] Y (i)	[4] Y (i+1)-Y (i-1)	[2] * [3]	[1] * [4]	方向角	夾角	距離
19-67K	-149657.916	-6.395	-41098.206	6.384	262823.027370	-955416.135744	91-12-07	89-52-29	6.530
19-39	-149658.053	6.140	-41091.677	6.675	-252302.896780	-998967.503775	1-19-57	90-07-50	6.279
19-9	-149651.776	6.395	-41091.531	-6.384	-262780.340745	955376.937984	271-02-07	89-42-10	6.531
19-68K	-149651.658	-6.140	-41098.061	-6.675	252342.094540	998924.817150	181-19-38	90-17-31	6.260
合計				倍面積 面積	81.884385 40.94	-81.884385 40.94			25.600

面積 (座標法) 計算書

地番 = 19-34
測点名

	[1] X (i)	[2] X (i+1)-X (i-1)	[3] Y (i)	[4] Y (i+1)-Y (i-1)	[2]*[3]	[1]*[4]	方向角	夾角	距離
19-91K	-149690.649	0.451	-41079.512	12.882	-18526.859912	-1928314.940418	1-05-08	90-02-22	0.686
19-89	-149689.963	0.921	-41079.499	-12.855	-37834.218579	1924264.474365	271-02-46	89-57-38	12.870
19-90	-149689.728	-0.451	-41092.367	-12.882	18532.657517	1928303.076096	181-10-09	90-07-23	0.686
19-98K	-149690.414	-0.921	-41092.381	12.855	37846.082901	-1924270.271970	91-02-46	89-52-37	12.871
合計				倍面積 面積	17.661927 8.83	-17.661927 8.83			27.113

面積 (座標法) 計算書

地番 = 19-35
測点名

	[1] X (i)	[2] X (i+1)-X (i-1)	[3] Y (i)	[4] Y (i+1)-Y (i-1)	[2]*[3]	[1]*[4]	方向角	夾角	距離
19-93	-149708.600	2.416	-41079.830	-12.777	-99248.869280	1912826.782200	270-59-00	89-54-49	12.820
19-96K	-149708.380	-1.088	-41092.648	-12.839	44708.801024	1922105.890820	180-55-11	89-56-11	1.308
19-58	-149709.688	-2.201	-41092.669	-0.035	90444.964469	5239.839080	180-53-53	179-58-42	0.893
19-95K	-149710.581	-1.108	-41092.683	12.798	45530.692764	-1915996.015638	90-57-41	90-03-48	12.814
19-94	-149710.796	1.981	-41079.871	12.853	-81379.224451	-1924232.860988	1-04-11	90-06-30	2.196
合計				倍面積 面積	56.364526 28.18	-56.364526 28.18			30.031