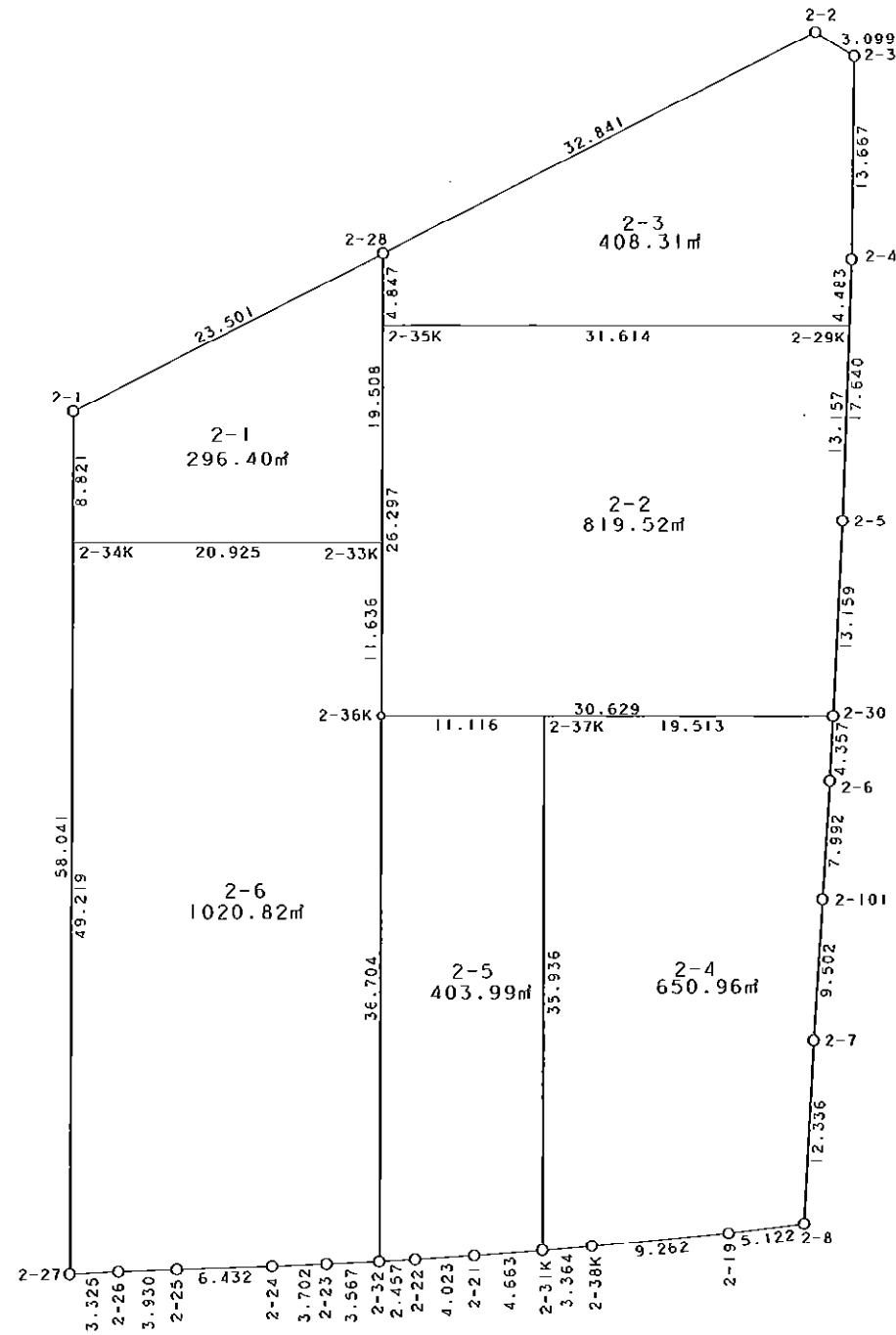


2街区



S = 1 / 500



凡 例

記号	名称
⊙	地区界点
○	街区点
○	画地点 (折点)
┆	画地点 (直線中)

面積 (座標法) 計算書

地番 = 2街区  
測点名

	[1] X (i)	[2] X (i+1)-X (i-1)	[3] Y (i)	[4] Y (i+1)-Y (i-1)	[2]*[3]	[1]*[4]	方向角	夾角	距離
2-1	-149481.781	-68.644	-41329.283	-21.232	2837007.302252	3173797.174192	180-15-20	117-04-37	58.041
2-27	-149539.821	-57.878	-41329.542	3.062	2392071.231876	-457890.931902	87-12-26	86-57-06	3.325
2-26	-149539.659	0.306	-41326.221	7.248	-12645.823626	-1083863.448432	87-54-00	180-41-34	3.930
2-25	-149539.515	0.339	-41322.294	10.356	-14008.257666	-1548631.217340	88-15-46	180-21-46	6.432
2-24	-149539.320	0.333	-41315.865	10.128	-13758.183045	-1514534.232960	87-51-48	179-36-02	3.702
2-23	-149539.182	0.295	-41312.166	7.263	-12187.088970	-1086103.078866	87-28-40	179-36-52	3.567
2-32	-149539.025	0.289	-41308.602	6.017	-11938.185978	-899776.313425	86-55-11	179-26-31	2.457
2-22	-149538.893	0.383	-41306.149	6.468	-15820.255067	-967217.559924	86-25-22	179-30-11	4.023
2-21	-149538.642	0.592	-41302.134	8.666	-24450.863328	-1295901.871572	85-48-24	179-23-02	4.663
2-31K	-149538.301	0.618	-41297.483	8.004	-25521.844494	-1196904.561204	85-16-39	179-28-15	3.364
2-38K	-149538.024	1.120	-41294.130	12.577	-46249.425600	-1880739.727848	84-46-41	179-30-02	9.262
2-19	-149537.181	1.453	-41284.906	14.310	-59986.968418	-2139877.060110	83-09-39	178-22-58	5.122
2-8	-149536.571	12.928	-41279.820	5.745	-533665.512960	-859087.600395	3-03-44	99-54-05	12.336
2-7	-149524.253	21.800	-41279.161	1.277	-899885.709800	-190942.471081	3-43-45	180-40-01	9.502
2-101	-149514.771	17.458	-41278.543	1.125	-720640.803694	-168204.117375	3-38-14	179-54-29	7.992
2-6	-149506.795	12.328	-41278.036	0.723	-508875.627808	-108093.412785	2-50-29	179-12-15	4.357
2-30	-149502.443	17.496	-41277.820	0.851	-722196.738720	-127226.578993	2-45-57	179-55-28	13.159
2-5	-149489.299	30.773	-41277.185	1.261	-1270222.814005	-188506.006039	2-02-01	179-16-04	17.640
2-4	-149471.670	31.295	-41276.559	0.813	-1291749.913905	-121520.467710	0-47-02	178-45-01	13.667
2-3	-149458.004	15.308	-41276.372	-2.441	-631858.702576	364826.987764	301-59-51	121-12-49	3.099
2-2	-149456.362	-13.173	-41279.000	-31.938	543768.267000	4773337.289556	243-11-07	121-11-16	32.841
2-28	-149471.177	-25.419	-41308.310	-50.283	1050015.931890	7515859.193091	243-10-43	179-59-36	23.501
合計				倍面積 面積	7200.013358 3600.00	-7200.013358 3600.00			245.982

地番	筆種別	面積	坪数
2-1	筆界	296.40	89.66
2-2	筆界	819.52	247.90
2-3	筆界	408.31	123.51
2-4	筆界	650.96	196.91
2-5	筆界	403.99	122.20
2-6	筆界	1020.82	308.79
	筆合計	3600.00	1088.97

面積 (座標法) 計算書

地番 = 2-1  
測点名

	[1] X (i)	[2] X (i+1)-X (i-1)	[3] Y (i)	[4] Y (i+1)-Y (i-1)	[2] * [3]	[1] * [4]	方向角	夾角	距離
2-33K	-149490.685	19.425	-41308.397	21.012	-802415.611725	-3141098.273220	0-15-20	90-01-42	19.508
2-28	-149471.177	8.904	-41308.310	-20.886	-367809.192240	3121855.002822	243-10-43	62-55-23	23.501
2-1	-149481.781	-19.425	-41329.283	-21.012	802821.322275	3140911.182372	180-15-12	117-04-29	8.821
2-34K	-149490.602	-8.904	-41329.322	20.886	367996.283088	-3122260.713372	90-13-38	89-58-26	20.925
合計				倍面積 面積	592.801398 296.40	-592.801398 296.40			72.755

面積 (座標法) 計算書

地番 = 2-2  
測点名

	[1] X (i)	[2] X (i+1)-X (i-1)	[3] Y (i)	[4] Y (i+1)-Y (i-1)	[2] * [3]	[1] * [4]	方向角	夾角	距離
2-35K	-149476.024	-26.171	-41308.332	-31.731	1081080.356772	4743023.717544	180-15-18	90-01-36	26.297
2-36K	-149502.321	-26.419	-41308.449	30.512	1091327.914131	-4561614.818352	90-13-42	89-58-24	30.629
2-30	-149502.443	13.022	-41277.820	31.264	-537519.772040	-4674044.377952	2-45-57	92-32-15	13.159
2-5	-149489.299	26.293	-41277.185	1.102	-1085301.025205	-164737.207498	2-02-03	179-16-06	13.157
2-29K	-149476.150	13.275	-41276.718	-31.147	-547948.431450	4655733.644050	270-13-42	88-11-39	31.614
合計				倍面積 面積	1639.042208 819.52	-1639.042208 819.52			114.856

面積 (座標法) 計算書

地番 = 2-3  
測点名

	[1] X (i)	[2] X (i+1)-X (i-1)	[3] Y (i)	[4] Y (i+1)-Y (i-1)	[2] * [3]	[1] * [4]	方向角	夾角	距離
2-29K	-149476.150	4.354	-41276.718	31.773	-179718.830172	-4749305.713950	2-01-57	91-48-15	4.483
2-4	-149471.670	18.146	-41276.559	0.346	-749004.439614	-51717.197820	0-47-02	178-45-05	13.667
2-3	-149458.004	15.308	-41276.372	-2.441	-631858.702576	364826.987764	301-59-51	121-12-49	3.099
2-2	-149456.362	-13.173	-41279.000	-31.938	543768.267000	4773337.289556	243-11-07	121-11-16	32.841
2-28	-149471.177	-19.662	-41308.310	-29.332	812203.991220	4384288.563764	180-15-36	117-04-29	4.847
2-35K	-149476.024	-4.973	-41308.332	31.592	205426.335036	-4722246.550208	90-13-42	89-58-06	31.614
合計				倍面積 面積	816.620894 408.31	-816.620894 408.31			90.551

面積 (座標法) 計算書

地番 = 2-4  
測点名

	[1] X (i)	[2] X (i+1)-X (i-1)	[3] Y (i)	[4] Y (i+1)-Y (i-1)	[2] * [3]	[1] * [4]	方向角	夾角	距離
2-31K	-149538.301	-35.659	-41297.483	3.203	1472626.946297	-478971.178103	85-16-39	85-02-18	3.364
2-38K	-149538.024	1.120	-41294.130	12.577	-46249.425600	-1880739.727848	84-46-41	179-30-02	9.262
2-19	-149537.181	1.453	-41284.906	14.310	-59986.968418	-2139877.060110	83-09-39	178-22-58	5.122
2-8	-149536.571	12.928	-41279.820	5.745	-533665.512960	-859087.600395	3-03-44	99-54-05	12.336
2-7	-149524.253	21.800	-41279.161	1.277	-899885.709800	-190942.471081	3-43-45	180-40-01	9.502
2-101	-149514.771	17.458	-41278.543	1.125	-720640.803694	-168204.117375	3-38-14	179-54-29	7.992
2-6	-149506.795	12.328	-41278.036	0.723	-508875.627808	-108093.412785	2-50-29	179-12-15	4.357
2-30	-149502.443	4.430	-41277.820	-19.297	-182860.742600	2884948.642571	270-13-45	87-23-16	19.513
2-37K	-149502.365	-35.858	-41297.333	-19.663	1480839.766714	2939665.002995	180-14-21	90-00-36	35.936
合計				倍面積 面積	1301.922131 650.96	-1301.922131 650.96			107.384

面積 (座標法) 計算書

地番 = 2-5  
測点名

	[1] X (i)	[2] X (i+1)-X (i-1)	[3] Y (i)	[4] Y (i+1)-Y (i-1)	[2] * [3]	[1] * [4]	方向角	夾角	距離
2-37K	-149502.365	35.980	-41297.333	-10.966	-1485878.041340	1639442.934590	270-13-36	89-59-15	11.116
2-36K	-149502.321	-36.660	-41308.449	-11.269	1514367.740340	1684741.655349	180-14-20	90-00-44	36.704
2-32	-149539.025	-36.572	-41308.602	2.300	1510738.192344	-343939.757500	86-55-11	86-40-51	2.457
2-22	-149538.893	0.383	-41306.149	6.468	-15820.255067	-967217.559924	86-25-22	179-30-11	4.023
2-21	-149538.642	0.592	-41302.134	8.666	-24450.863328	-1295901.871572	85-48-24	179-23-02	4.663
2-31K	-149538.301	36.277	-41297.483	4.801	-1498148.790791	-717933.383101	0-14-21	94-25-57	35.936
合計				倍面積 面積	807.982158 403.99	-807.982158 403.99			94.899

面積 (座標法) 計算書

地番 = 2-6  
測点名

	[1] X (i)	[2] X (i+1)-X (i-1)	[3] Y (i)	[4] Y (i+1)-Y (i-1)	[2] * [3]	[1] * [4]	方向角	夾角	距離
2-34K	-149490.602	-49.136	-41329.322	-21.145	2030757.565792	3160978.779290	180-15-22	90-01-44	49.219
2-27	-149539.821	-49.057	-41329.542	3.101	2027503.341894	-463722.984921	87-12-26	86-57-04	3.325
2-26	-149539.659	0.306	-41326.221	7.248	-12645.823626	-1083863.448432	87-54-00	180-41-34	3.930
2-25	-149539.515	0.339	-41322.294	10.356	-14008.257666	-1548631.217340	88-15-46	180-21-46	6.432
2-24	-149539.320	0.333	-41315.865	10.128	-13758.183045	-1514534.232960	87-51-48	179-36-02	3.702
2-23	-149539.182	0.295	-41312.166	7.263	-12187.088970	-1086103.078866	87-28-40	179-36-52	3.567
2-32	-149539.025	36.861	-41308.602	3.717	-1522676.378322	-555836.555925	0-14-20	92-45-40	36.704
2-36K	-149502.321	48.340	-41308.449	0.205	-1996850.424660	-30647.975805	0-15-22	180-01-02	11.636
2-33K	-149490.685	11.719	-41308.397	-20.873	-484093.104443	3120319.068005	270-13-38	89-58-16	20.925
合計				倍面積 面積	2041.646954 1020.82	-2041.646954 1020.82			139.440