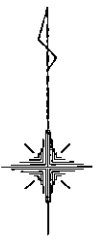
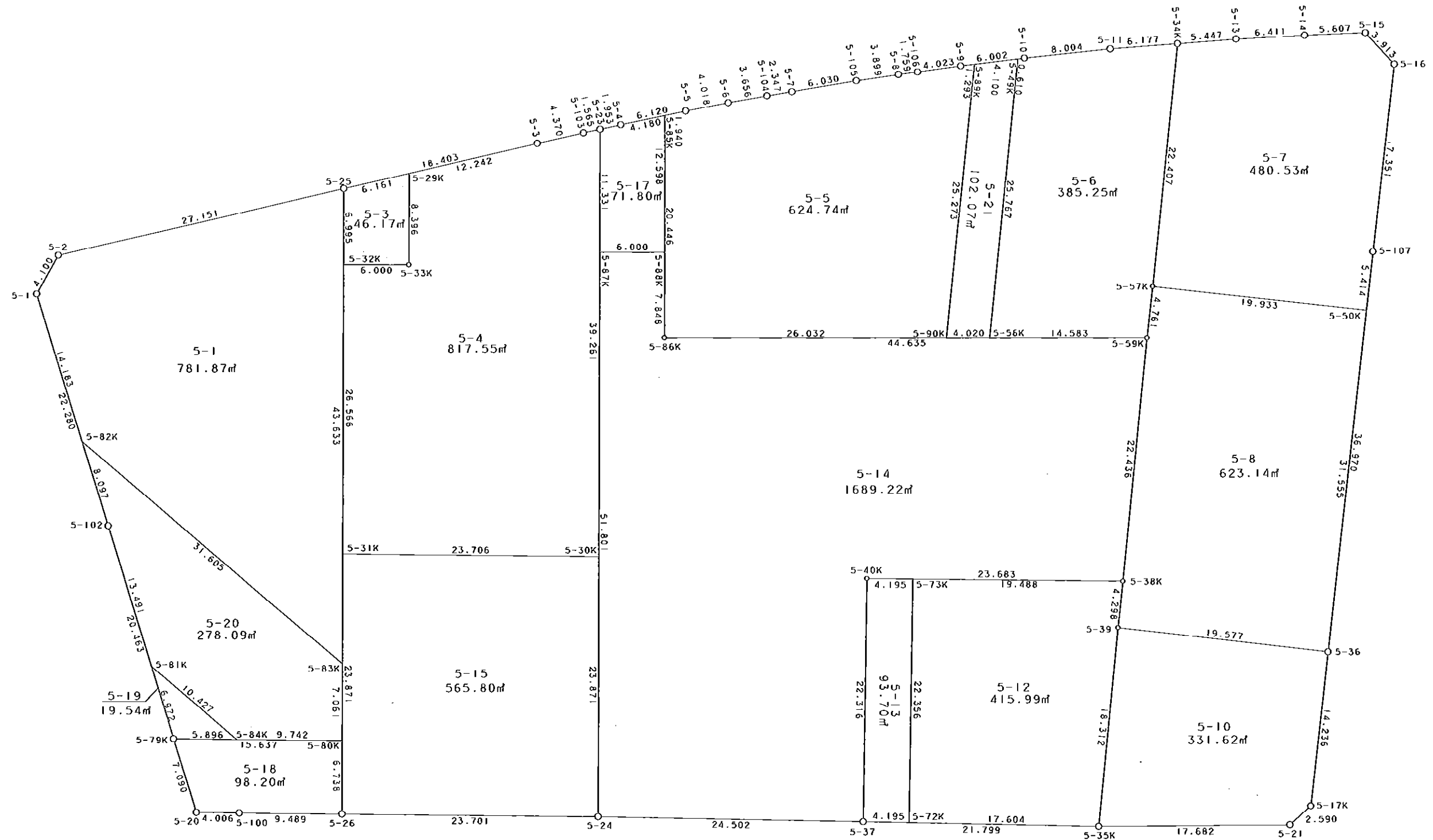


西部第4地区土地区画整理事業 出来形確認測量 (原子図)

5街区



S = 1 / 500



凡 例

記号	名称
○	地区界点
○	街区点
○	画地点(折れ点)
└	画地点(直線中)

面積 (座標法) 計算書

地番 = 5街区  
測点名

	[1] X (i)	[2] X (i+1)-X (i-1)	[3] Y (i)	[4] Y (i+1)-Y (i-1)	[2] * [3]	[1] * [4]	方向角	夾角	距離
5-2	-149579.505	-9.655	-41441.454	-28.488	400117.238370	4261220.938440	209-40-44	132-38-51	4.100
5-1	-149583.067	-24.837	-41443.484	4.585	1029331.812108	-685838.362195	162-43-41	133-02-57	22.280
5-102	-149604.342	-40.825	-41436.869	12.658	1691660.176925	-1893691.761036	162-49-24	180-05-43	20.463
5-79K	-149623.892	-26.317	-41430.826	8.160	1090335.047842	-1220930.958720	162-37-41	179-48-17	7.090
5-20	-149630.659	-6.832	-41428.709	6.122	283040.939888	-916038.894398	90-55-47	108-18-06	4.006
5-100	-149630.724	-0.185	-41424.704	13.493	7663.570240	-2018967.358932	90-43-29	179-47-42	9.489
5-26	-149630.844	-0.424	-41415.216	33.187	17560.051584	-4965798.819828	90-44-06	180-00-37	23.701
5-24	-149631.148	-0.856	-41391.517	48.195	35431.138552	-7211473.177860	91-17-27	180-33-21	24.502
5-37	-149631.700	-1.067	-41367.021	46.289	44138.611407	-6926301.761300	91-21-13	180-03-46	21.799
5-35K	-149632.215	-0.447	-41345.228	39.475	18481.316916	-5906731.687125	89-46-47	178-25-34	17.682
5-21	-149632.147	1.780	-41327.546	19.626	-73563.031880	-2936680.517022	48-37-51	138-51-04	2.590
5-17K	-149630.435	15.855	-41325.602	3.572	-655217.419710	-534479.913820	6-33-59	137-56-08	14.236
5-36	-149616.292	50.871	-41323.974	5.847	-2102191.881354	-874806.459324	6-33-11	179-59-12	36.970
5-107	-149579.564	53.965	-41319.755	6.205	-2229820.578575	-928141.194620	6-34-21	180-01-10	17.351
5-16	-149562.327	20.108	-41317.769	-0.673	-830817.699052	100655.446071	317-11-44	130-37-23	3.913
5-15	-149559.456	2.663	-41320.428	-8.262	-110036.299764	1235660.225472	267-52-26	130-40-42	5.607
5-14	-149559.664	-0.526	-41326.031	-12.006	21737.492306	1795613.325984	267-09-24	179-16-58	6.411
5-13	-149559.982	-0.714	-41332.434	-11.836	29511.357876	1770191.946952	265-49-52	178-40-28	5.447
5-34K	-149560.378	-0.851	-41337.867	-11.593	35178.524817	1733853.462154	265-46-32	179-56-40	6.177
5-11	-149560.833	-1.264	-41344.027	-14.123	52258.850128	2112247.644459	264-11-56	178-25-24	8.004
5-10	-149561.642	-1.505	-41351.990	-13.925	62234.744950	2082645.864850	263-20-29	179-08-33	6.002
5-9	-149562.338	-1.221	-41357.952	-9.951	50498.059392	1488294.825438	262-30-08	179-09-39	4.023
5-106	-149562.863	-0.755	-41361.941	-5.733	31228.265455	857443.893579	262-29-14	179-59-06	1.759
5-8	-149563.093	-0.791	-41363.685	-5.602	32718.674835	837852.446986	261-43-35	179-14-21	3.899
5-105	-149563.654	-1.546	-41367.543	-9.807	63954.221478	1466770.754778	260-35-55	178-52-20	6.030
5-7	-149564.639	-1.363	-41373.492	-8.265	56392.069596	1236151.741335	260-43-49	180-07-54	2.347
5-104	-149565.017	-0.998	-41375.808	-5.919	41293.056384	885275.335623	260-14-10	179-30-21	3.656
5-6	-149565.637	-1.365	-41379.411	-7.551	56482.896015	1129370.124987	259-18-50	179-04-40	4.018
5-5	-149566.382	-1.978	-41383.359	-9.942	81856.284102	1486988.969844	258-22-34	179-03-44	6.120
5-4	-149567.615	-1.634	-41389.353	-7.905	67630.202802	1182331.996575	258-08-57	179-46-23	1.953
5-23	-149568.016	-0.725	-41391.264	-3.442	30008.666400	514813.111072	258-03-04	179-54-07	1.565
5-103	-149568.340	-1.279	-41392.795	-5.795	52941.384805	866748.530300	257-22-33	179-19-29	4.370
5-3	-149569.295	-5.072	-41397.059	-22.201	209965.883248	3320587.918295	257-04-23	179-41-50	18.403
5-25	-149573.412	-10.210	-41414.996	-44.395	422847.109160	6640311.625740	257-01-53	179-57-30	27.151
合計				倍面積 面積	14850.737246 7425.36	-14850.737246 7425.36			353.114

地番	筆種別	面積	坪数
5-1	筆界	781.87	236.51
5-3	筆界	46.17	13.96
5-4	筆界	817.55	247.31
5-5	筆界	624.74	188.98
5-6	筆界	385.25	116.54
5-7	筆界	480.53	145.36
5-8	筆界	623.14	188.50
5-10	筆界	331.62	100.31
5-12	筆界	415.99	125.83
5-13	筆界	93.70	28.34
5-14	筆界	1689.22	510.99
5-17	筆界	71.80	21.72
5-15	筆界	565.80	171.15
5-18	筆界	98.20	29.70
5-19	筆界	19.54	5.91
5-20	筆界	278.09	84.12
5-21	筆界	102.07	30.87
	筆合	7425.28	2246.10

面積 (座標法) 計算書

地番 = 5-1  
測点名

	[1] X (i)	[2] X (i+1)-X (i-1)	[3] Y (i)	[4] Y (i+1)-Y (i-1)	[2] * [3]	[1] * [4]	方向角	夾角	距離
5-2	-149579.505	-9.655	-41441.454	-28.488	400117.238370	4261220.938440	209-40-44	132-38-51	4.100
5-1	-149583.067	-17.105	-41443.484	2.181	708890.793820	-326240.669127	162-43-40	133-02-56	14.183
5-82K	-149596.610	-33.978	-41439.273	28.321	1408023.617994	-4236725.591810	130-17-01	147-33-21	31.605
5-83K	-149617.045	23.198	-41415.163	24.277	-960748.951274	-3632253.001465	0-13-09	49-56-08	43.633
5-25	-149573.412	37.540	-41414.996	-26.291	-1554718.949840	3932434.574892	257-01-53	76-48-44	27.151
合計				倍面積 面積	1563.749070 781.87	-1563.749070 781.87			120.672

面積 (座標法) 計算書

地番 = 5-3  
測点名

	[1] X (i)	[2] X (i+1)-X (i-1)	[3] Y (i)	[4] Y (i+1)-Y (i-1)	[2] * [3]	[1] * [4]	方向角	夾角	距離
5-33K	-149580.430	8.373	-41409.023	6.032	-346717.749579	-902269.153760	0-13-06	89-59-55	8.396
5-29K	-149572.034	7.018	-41408.991	-5.973	-290608.298838	893393.759082	257-04-33	76-51-27	6.161
5-25	-149573.412	-8.373	-41414.996	-6.032	346767.761508	902226.821184	180-13-16	103-08-43	6.995
5-32K	-149580.407	-7.018	-41415.023	5.973	290650.631414	-893443.771011	90-13-11	89-59-55	6.000
合計				倍面積 面積	92.344505 46.17	-92.344505 46.17			27.552

面積 (座標法) 計算書

地番 = 5-4  
測点名

	[1] X (i)	[2] X (i+1)-X (i-1)	[3] Y (i)	[4] Y (i+1)-Y (i-1)	[2] * [3]	[1] * [4]	方向角	夾角	距離
5-29K	-149572.034	-11.135	-41408.991	-11.964	461089.114785	1789479.814776	180-13-06	103-08-48	8.396
5-33K	-149580.430	-8.373	-41409.023	-6.032	346717.749579	902269.153760	270-13-11	270-00-05	6.000
5-32K	-149580.407	-26.543	-41415.023	-6.102	1099278.955489	912739.643514	180-13-12	90-00-01	26.566
5-31K	-149606.973	-26.870	-41415.125	23.602	1112824.408750	-3531023.776746	90-44-05	90-30-53	23.706
5-30K	-149607.277	38.957	-41391.421	23.861	-1612485.587897	-3569779.236497	0-13-45	89-29-40	39.261
5-23	-149568.016	38.937	-41391.264	-1.374	-1611651.646368	205506.453984	258-03-04	77-49-19	1.565
5-103	-149568.340	-1.279	-41392.795	-5.795	52941.384805	866748.530300	257-22-33	179-19-29	4.370
5-3	-149569.295	-3.694	-41397.059	-16.196	152920.735946	2422424.301820	257-04-18	179-41-45	12.242
合計				倍面積 面積	1635.115089 817.55	-1635.115089 817.55			122.106

面積 (座標法) 計算書

地番 = 5-5  
測点名

	[1] X (i)	[2] X (i+1)-X (i-1)	[3] Y (i)	[4] Y (i+1)-Y (i-1)	[2] * [3]	[1] * [4]	方向角	夾角	距離
5-89K	-149562.188	24.985	-41356.668	1.357	-1033296.349980	-202955.889116	263-20-12	77-20-18	1.293
5-9	-149562.338	-0.675	-41357.952	-5.273	27916.617600	788642.208274	262-30-08	179-09-56	4.023
5-106	-149562.863	-0.755	-41361.941	-5.733	31228.265455	857443.893579	262-29-14	179-59-06	1.759
5-8	-149563.093	-0.791	-41363.685	-5.602	32718.674835	837852.446986	261-43-35	179-14-21	3.899
5-105	-149563.654	-1.546	-41367.543	-9.807	63954.221478	1466770.754778	260-35-55	178-52-20	6.030
5-7	-149564.639	-1.363	-41373.492	-8.265	56392.069596	1236151.741335	260-43-49	180-07-54	2.347
5-104	-149565.017	-0.998	-41375.808	-5.919	41293.056384	885275.335623	260-14-10	179-30-21	3.656
5-6	-149565.637	-1.365	-41379.411	-7.551	56482.896015	1129370.124987	259-18-50	179-04-40	4.018
5-5	-149566.382	-1.136	-41383.359	-5.848	47011.495824	874664.201936	258-22-17	179-03-27	1.940
5-85K	-149566.773	-20.837	-41385.259	-1.982	862344.641783	296441.344086	180-13-47	101-51-30	20.446
5-86K	-149587.219	-20.550	-41385.341	25.950	850468.757550	-3881788.333050	90-13-44	89-59-57	26.032
5-90K	-149587.323	25.031	-41359.309	28.673	-1035264.863579	-4289117.312379	5-59-54	95-46-10	25.273
合計				倍面積 面積	1249.482961 624.74	-1249.482961 624.74			100.716

面積 (座標法) 計算書

地番 = 5-6  
測点名

	[1] X (i)	[2] X (i+1)-X (i-1)	[3] Y (i)	[4] Y (i+1)-Y (i-1)	[2] * [3]	[1] * [4]	方向角	夾角	距離
5-56K	-149587.339	-25.684	-41355.289	11.890	1062169.242676	-1778593.460710	90-13-40	84-13-43	14.583
5-59K	-149587.397	4.673	-41340.706	15.113	-193185.119138	-2260714.330861	6-23-31	96-09-51	4.761
5-57K	-149582.666	27.019	-41340.176	2.839	-1116970.215344	-424665.188774	5-54-53	179-31-22	22.407
5-34K	-149560.378	21.833	-41337.867	-3.851	-902529.650211	575957.015678	265-46-32	79-51-39	6.177
5-11	-149560.833	-1.264	-41344.027	-14.123	52258.850128	2112247.644459	264-11-56	178-25-24	8.004
5-10	-149561.642	-0.880	-41351.990	-8.569	36389.751200	1281593.710298	263-19-03	179-07-07	0.610
5-49K	-149561.713	-25.697	-41352.596	-3.299	1062637.659412	493404.091187	185-59-57	102-40-54	25.767
合計				倍面積 面積	770.518723 385.25	-770.518723 385.25			82.309

面積 (座標法) 計算書

地番 = 5-7  
測点名

	[1] X (i)	[2] X (i+1)-X (i-1)	[3] Y (i)	[4] Y (i+1)-Y (i-1)	[2] * [3]	[1] * [4]	方向角	夾角	距離
5-50K	-149584.943	3.102	-41320.373	20.421	-128175.797046	-3054674.121003	6-33-15	89-59-42	5.414
5-107	-149579.564	22.616	-41319.755	2.604	-934487.579080	-389505.184656	6-34-21	180-01-06	17.351
5-16	-149562.327	20.108	-41317.769	-0.673	-830817.699052	100655.446071	317-11-44	130-37-23	3.913
5-15	-149559.456	2.663	-41320.428	-8.262	-110036.299764	1235660.225472	267-52-26	130-40-42	5.607
5-14	-149559.664	-0.526	-41326.031	-12.006	21737.492306	1795613.325984	267-09-24	179-16-58	6.411
5-13	-149559.982	-0.714	-41332.434	-11.836	29511.357876	1770191.946952	265-49-52	178-40-28	5.447
5-34K	-149560.378	-22.684	-41337.867	-7.742	937708.175028	1157896.446476	185-54-53	100-05-01	22.407
5-57K	-149582.666	-24.565	-41340.176	17.494	1015521.423440	-2616799.159004	96-33-33	90-38-40	19.933
合計				倍面積 面積	961.073708 480.53	-961.073708 480.53			86.483

面積 (座標法) 計算書

地番 = 5-8  
測点名

	[1] X (i)	[2] X (i+1)-X (i-1)	[3] Y (i)	[4] Y (i+1)-Y (i-1)	[2] * [3]	[1] * [4]	方向角	夾角	距離
5-57K	-149582.666	-2.454	-41340.176	-20.333	101448.791904	3041464.347778	186-23-31	89-49-58	4.761
5-59K	-149587.397	-27.053	-41340.706	-2.786	1118390.119418	416750.488042	185-46-16	179-22-45	22.436
5-38K	-149609.719	-26.596	-41342.962	-2.710	1099557.417352	405442.338490	186-03-48	180-17-32	4.298
5-39	-149613.993	-6.573	-41343.416	18.988	271750.273368	-2840870.499084	96-44-38	90-40-50	19.577
5-36	-149616.292	29.050	-41323.974	23.043	-1200461.444700	-3447608.216556	6-33-10	89-48-32	31.555
5-50K	-149584.943	33.626	-41320.373	-16.202	-1389438.862498	2423575.246486	276-33-33	90-00-23	19.933
合計				倍面積 面積	1246.294844 623.14	-1246.294844 623.14			102.560

面積 (座標法) 計算書

地番 = 5-10  
測点名

	[1] X (i)	[2] X (i+1)-X (i-1)	[3] Y (i)	[4] Y (i+1)-Y (i-1)	[2] * [3]	[1] * [4]	方向角	夾角	距離
5-39	-149613.993	-15.923	-41343.416	-21.254	658311.212968	3179895.807222	185-40-44	88-56-06	18.312
5-35K	-149632.215	-18.154	-41345.228	15.870	750581.269112	-2374663.252050	89-46-47	84-06-03	17.682
5-21	-149632.147	1.780	-41327.546	19.626	-73563.031880	-2936680.517022	48-37-51	138-51-04	2.590
5-17K	-149630.435	15.855	-41325.602	3.572	-655217.419710	-534479.913820	6-33-59	137-56-08	14.236
5-36	-149616.292	16.442	-41323.974	-17.814	-679448.780508	2665264.625688	276-44-38	90-10-39	19.577
合計				倍面積 面積	663.249982 331.62	-663.249982 331.62			72.397

面積 (座標法) 計算書

地番 = 5-12  
測点名

	[1] X (i)	[2] X (i+1)-X (i-1)	[3] Y (i)	[4] Y (i+1)-Y (i-1)	[2] * [3]	[1] * [4]	方向角	夾角	距離
5-72K	-149631.799	-22.769	-41362.827	17.220	941790.207963	-2576659.578780	91-21-15	90-22-58	17.604
5-35K	-149632.215	17.806	-41345.228	19.411	-736193.129768	-2904510.925365	5-40-44	94-19-29	18.312
5-39	-149613.993	22.496	-41343.416	2.266	-930061.486336	-339025.308138	6-03-48	180-23-04	4.298
5-38K	-149609.719	4.547	-41342.962	-19.032	-187986.448214	2847372.172008	270-48-10	84-44-22	19.488
5-73K	-149609.446	-22.080	-41362.448	-19.865	913282.851840	2971991.644790	180-58-17	90-10-07	22.356
合計				倍面積 面積	831.995485 415.99	-831.995485 415.99			82.058

面積 (座標法) 計算書

地番 = 5-13  
測点名

	[1] X (i)	[2] X (i+1)-X (i-1)	[3] Y (i)	[4] Y (i+1)-Y (i-1)	[2] * [3]	[1] * [4]	方向角	夾角	距離
5-73K	-149609.446	22.412	-41362.448	-3.816	-927015.184576	570909.645936	270-48-21	89-50-04	4.195
5-40K	-149609.387	-22.254	-41366.643	-4.573	920573.273322	684163.726751	180-58-14	90-09-53	22.316
5-37	-149631.700	-22.412	-41367.021	3.816	927117.674652	-570994.567200	91-21-08	90-22-54	4.195
5-72K	-149631.799	22.254	-41362.827	4.573	-920488.352058	-684266.216827	0-58-17	89-37-09	22.356
合計				倍面積 面積	187.411340 93.70	-187.411340 93.70			53.062

面積 (座標法) 計算書

地番 = 5-14  
測点名

	[1] X (i)	[2] X (i+1)-X (i-1)	[3] Y (i)	[4] Y (i+1)-Y (i-1)	[2] * [3]	[1] * [4]	方向角	夾角	距離
5-87K	-149579.347	-51.777	-41391.309	-6.208	2143117.806093	928588.586176	180-13-48	90-00-03	51.801
5-24	-149631.148	-52.353	-41391.517	24.288	2166970.089501	-3634241.322624	91-17-27	91-03-39	24.502
5-37	-149631.700	21.761	-41367.021	24.874	-900187.743981	-3721938.905800	0-58-14	89-40-47	22.316
5-40K	-149609.387	21.981	-41366.643	24.059	-909280.179783	-3599452.241833	90-48-12	269-49-58	23.683
5-38K	-149609.719	21.990	-41342.962	25.937	-909131.734380	-3880427.281703	5-46-16	94-58-04	22.436
5-59K	-149587.397	22.500	-41340.706	-42.379	-930165.885000	6339364.297463	270-13-43	84-27-27	44.635
5-86K	-149587.219	8.026	-41385.341	-44.603	-332158.746866	6672038.729057	0-14-01	270-00-18	7.848
5-88K	-149579.371	7.872	-41385.309	-5.968	-325785.152448	892689.686128	270-13-45	89-59-44	6.000
合計				倍面積 面積	3378.453136 1689.22	-3378.453136 1689.22			203.221

面積 (座標法) 計算書

地番 = 5-17  
測点名

	[1] X (i)	[2] X (i+1)-X (i-1)	[3] Y (i)	[4] Y (i+1)-Y (i-1)	[2] * [3]	[1] * [4]	方向角	夾角	距離
5-88K	-149579.371	12.574	-41385.309	6.050	-520378.875366	-904955.194550	0-13-39	89-59-54	12.598
5-85K	-149566.773	11.756	-41385.259	-4.044	-486525.104804	604848.030012	258-22-42	78-09-03	4.180
5-4	-149567.615	-1.243	-41389.353	-6.005	51446.965779	898153.528075	258-08-57	179-46-15	1.953
5-23	-149568.016	-11.732	-41391.264	-1.956	485602.309248	292555.039296	180-13-39	102-04-42	11.331
5-87K	-149579.347	-11.355	-41391.309	5.955	469998.313695	-890745.011385	90-13-45	90-00-06	6.000
合計				倍面積 面積	143.608552 71.80	-143.608552 71.80			36.062

面積 (座標法) 計算書

地番 = 5-15  
測点名

	[1] X (i)	[2] X (i+1)-X (i-1)	[3] Y (i)	[4] Y (i+1)-Y (i-1)	[2] * [3]	[1] * [4]	方向角	夾角	距離
5-31K	-149606.973	-23.567	-41415.125	-23.795	976030.250875	3559897.922535	180-13-06	89-29-01	23.871
5-26	-149630.844	-24.175	-41415.216	23.608	1001212.846800	-3532484.965152	90-44-06	90-31-00	23.701
5-24	-149631.148	23.567	-41391.517	23.795	-975473.881139	-3560473.166660	0-13-50	89-29-44	23.871
5-30K	-149607.277	24.175	-41391.421	-23.608	-1000637.602675	3531928.595416	270-44-05	90-30-15	23.706
合計				倍面積 面積	1131.613861 565.80	-1131.613861 565.80			95.149

面積 (座標法) 計算書

地番 = 5-18  
測点名

	[1] X (i)	[2] X (i+1)-X (i-1)	[3] Y (i)	[4] Y (i+1)-Y (i-1)	[2] * [3]	[1] * [4]	方向角	夾角	距離
5-79K	-149623.892	-6.553	-41430.826	-13.519	271496.202778	2022765.395948	162-37-41	71-50-38	7.090
5-20	-149630.659	-6.832	-41428.709	6.122	283040.939888	-916038.894398	90-55-47	108-18-06	4.006
5-100	-149630.724	-0.185	-41424.704	13.493	7663.570240	-2018967.358932	90-43-29	179-47-42	9.489
5-26	-149630.844	6.618	-41415.216	9.514	-274085.899488	-1423587.849816	0-13-16	89-29-47	6.738
5-80K	-149624.106	6.952	-41415.190	-15.610	-287918.400880	2335632.294660	270-47-03	90-33-47	15.637
合計				倍面積 面積	196.412538 98.20	-196.412538 98.20			42.960

面積 (座標法) 計算書

地番 = 5-19  
測点名

	[1] X (i)	[2] X (i+1)-X (i-1)	[3] Y (i)	[4] Y (i+1)-Y (i-1)	[2] * [3]	[1] * [4]	方向角	夾角	距離
5-81K	-149617.231	0.081	-41432.885	-5.895	-3356.063685	881993.576745	162-49-23	32-32-16	6.972
5-79K	-149623.892	-6.742	-41430.826	7.954	279326.628892	-1190108.436968	90-47-14	107-57-51	5.896
5-84K	-149623.973	6.661	-41424.931	-2.059	-275931.465391	308075.760407	310-17-07	39-29-53	10.427
合計				倍面積 面積	39.099816 19.54	-39.099816 19.54			23.295

面積 (座標法) 計算書

地番 = 5-20  
測点名

	[1] X (i)	[2] X (i+1)-X (i-1)	[3] Y (i)	[4] Y (i+1)-Y (i-1)	[2] * [3]	[1] * [4]	方向角	夾角	距離
5-82K	-149596.610	12.703	-41439.273	-21.706	-526403.084919	3247144.016660	162-43-43	32-26-42	8.097
5-102	-149604.342	-20.621	-41436.869	6.388	854469.675649	-955672.536696	162-49-25	180-05-42	13.491
5-81K	-149617.231	-19.631	-41432.885	11.938	813368.965435	-1786130.503678	130-17-07	147-27-42	10.427
5-84K	-149623.973	-6.875	-41424.931	17.695	284796.400625	-2647596.202235	90-46-56	140-29-49	9.742
5-80K	-149624.106	6.928	-41415.190	9.768	-286924.436320	-1461528.267408	0-13-09	89-26-13	7.061
5-83K	-149617.045	27.496	-41415.163	-24.083	-1138751.321848	3603227.294735	310-17-01	130-03-52	31.605
合計				倍面積 面積	556.198622 278.09	-556.198622 278.09			80.423

面積 (座標法) 計算書

地番 = 5-21  
測点名

	[1] X (i)	[2] X (i+1)-X (i-1)	[3] Y (i)	[4] Y (i+1)-Y (i-1)	[2] * [3]	[1] * [4]	方向角	夾角	距離
5-89K	-149562.188	-25.610	-41356.668	-6.713	1059144.267480	1004010.968044	185-59-54	102-39-07	25.273
5-90K	-149587.323	-25.151	-41359.309	1.379	1040227.980659	-206280.918417	90-13-41	84-13-47	4.020
5-56K	-149587.339	25.610	-41355.289	6.713	-1059108.951290	-1004179.806707	5-59-57	95-46-16	25.767
5-49K	-149561.713	25.151	-41352.596	-1.379	-1040059.141996	206245.602227	263-20-47	77-20-50	4.100
合計				倍面積 面積	204.154853 102.07	-204.154853 102.07			59.160