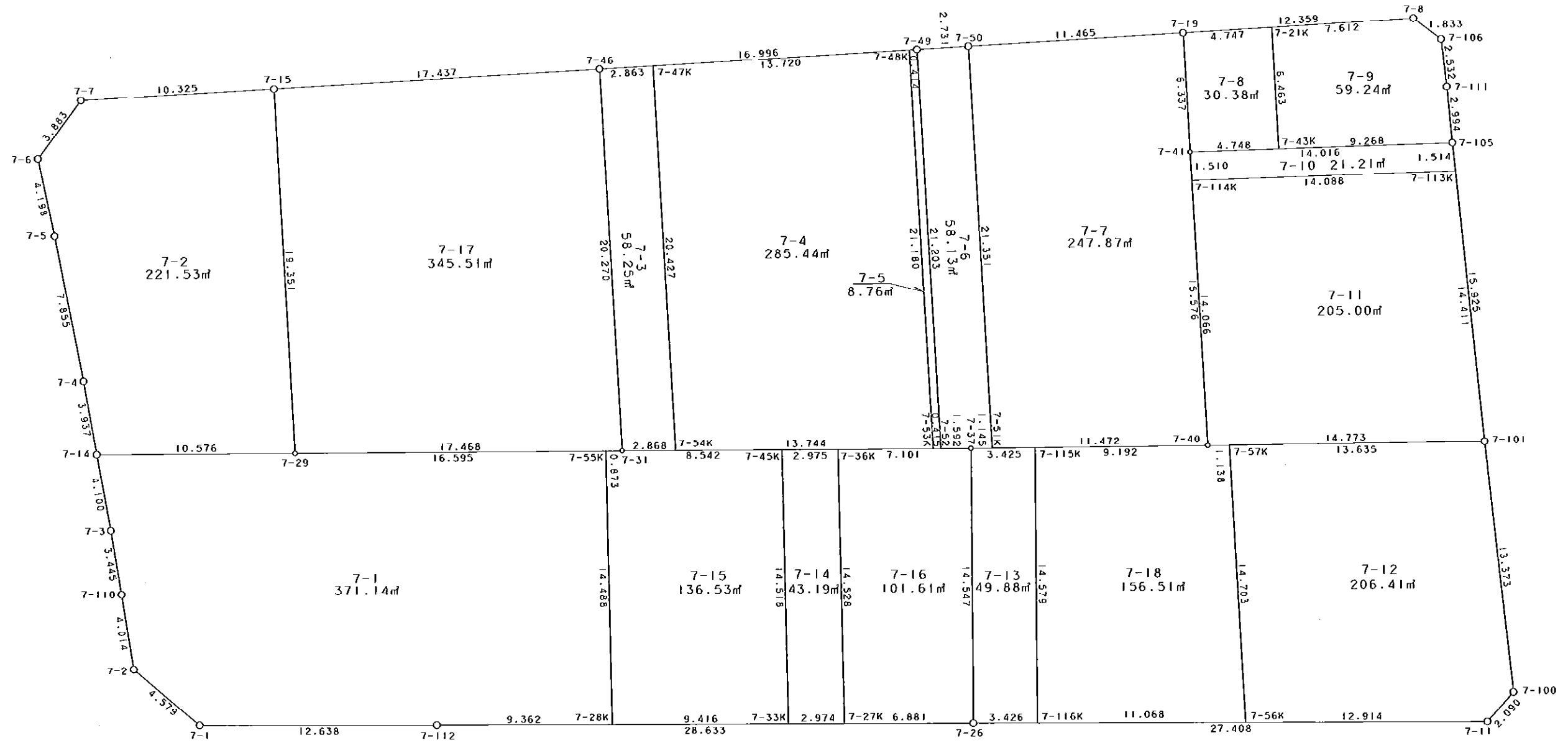


西部第4地区土地区画整理事業 出来形確認測量 (原子図)

7街区



S = 1 / 250



凡 例

記号	名称
⊙	地区界点
○	街区点
○	画地点 (折れ点)
	画地点 (直線中)

面積 (座標法) 計算書

地番 = 7街区
測点名

	[1] X (i)	[2] X (i+1)-X (i-1)	[3] Y (i)	[4] Y (i+1)-Y (i-1)	[2] * [3]	[1] * [4]	方向角	夾 角	距 離
7-2	-149559.094	-3.346	-41310.411	-7.330	138224.635206	1096268.159020	226-29-44	139-15-58	4.579
7-1	-149562.246	-15.707	-41313.732	-4.768	648914.788524	713112.788928	186-34-28	140-04-44	12.638
7-112	-149574.801	-41.002	-41315.179	-4.706	1694004.969358	703899.013506	186-32-08	179-57-40	28.633
7-26	-149603.248	-55.674	-41318.438	-6.403	2300362.717212	957909.596944	186-35-13	180-03-05	27.408
7-11	-149630.475	-28.796	-41321.582	-1.764	1189896.275272	263948.157900	138-40-01	132-04-48	2.090
7-100	-149632.044	-1.568	-41320.202	14.753	64790.076736	-2207521.545132	89-59-45	131-19-44	13.373
7-101	-149632.043	-0.137	-41306.829	29.297	5659.035573	-4383769.963771	90-29-47	180-30-02	15.925
7-105	-149632.181	-0.192	-41290.905	18.918	7927.853760	-2830741.600158	91-02-00	180-32-13	2.994
7-111	-149632.235	-0.055	-41287.911	5.526	2270.835105	-826867.730610	90-01-21	178-59-21	2.532
7-106	-149632.236	1.325	-41285.379	3.798	-54703.127175	-568303.232328	43-40-26	133-39-05	1.833
7-8	-149630.910	13.666	-41284.113	1.953	-564188.688258	-292229.167230	3-11-11	139-30-45	12.359
7-19	-149618.570	23.787	-41283.426	1.336	-982008.854262	-199890.409520	3-14-42	180-03-31	11.465
7-50	-149607.123	14.174	-41282.777	0.798	-585142.081198	-119386.484154	3-07-39	179-52-57	2.731
7-49	-149604.396	19.696	-41282.628	1.103	-813102.641088	-165013.648788	3-13-04	180-05-25	16.996
7-46	-149587.427	34.379	-41281.674	1.930	-1419222.670446	-288703.734110	3-12-31	179-59-27	17.437
7-15	-149570.017	27.719	-41280.698	1.547	-1144259.667862	-231384.816299	3-10-13	179-57-42	10.325
7-7	-149559.708	12.982	-41280.127	-2.245	-535898.608714	335761.544460	313-30-28	130-20-15	3.883
7-6	-149557.035	2.232	-41282.943	-6.991	-92143.528776	1045553.231685	263-58-13	130-27-45	4.198
7-5	-149557.476	-1.114	-41287.118	-12.001	45993.849452	1794839.269476	265-05-06	181-06-53	7.855
7-4	-149558.149	-0.944	-41294.944	-11.754	38982.427136	1757906.483346	266-03-12	180-58-06	3.937
7-14	-149558.420	-0.560	-41298.872	-8.018	23127.368320	1199159.411560	265-57-29	179-54-17	4.100
7-3	-149558.709	-0.480	-41302.962	-7.530	19825.421760	1126177.078770	266-49-19	180-51-50	3.445
7-110	-149558.900	-0.385	-41306.402	-7.449	15902.964770	1114064.246100	267-13-46	180-24-27	4.014
合計				倍面積 面積	5213.350405 2606.67	-5213.350405 2606.67			214.750

地番	筆種別	面積	坪数
7-1	筆界	371.14	112.27
7-2	筆界	221.53	67.01
7-3	筆界	58.25	17.62
7-4	筆界	285.44	86.34
7-5	筆界	8.76	2.65
7-6	筆界	58.13	17.58
7-7	筆界	247.87	74.98
7-8	筆界	30.38	9.19
7-9	筆界	59.24	17.92
7-10	筆界	21.21	6.41
7-11	筆界	205.00	62.01
7-12	筆界	206.41	62.43
7-13	筆界	49.88	15.08
7-14	筆界	43.19	13.06
7-15	筆界	136.53	41.30
7-16	筆界	101.61	30.73
7-17	筆界	345.51	104.51
7-18	筆界	156.51	47.34
	筆合計	2606.59	788.43

面積 (座標法) 計算書

地番 = 7-1
測点名

	[1] X (i)	[2] X (i+1)-X (i-1)	[3] Y (i)	[4] Y (i+1)-Y (i-1)	[2]*[3]	[1]*[4]	方向角	夾角	距離
7-55K	-149585.431	15.168	-41301.818	16.226	-626465.975424	-2427173.203406	6-13-25	90-57-38	16.595
7-29	-149568.934	27.011	-41300.019	2.946	-1115554.813209	-440630.079564	6-13-33	180-00-08	10.576
7-14	-149558.420	10.225	-41298.872	-2.943	-422280.966200	440150.430060	265-57-29	79-43-56	4.100
7-3	-149558.709	-0.480	-41302.962	-7.530	19825.421760	1126177.078770	266-49-19	180-51-50	3.445
7-110	-149558.900	-0.385	-41306.402	-7.449	15902.964770	1114064.246100	267-13-46	180-24-27	4.014
7-2	-149559.094	-3.346	-41310.411	-7.330	138224.635206	1096268.159020	226-29-44	139-15-58	4.579
7-1	-149562.246	-15.707	-41313.732	-4.768	648914.788524	713112.788928	186-34-28	140-04-44	12.638
7-112	-149574.801	-21.856	-41315.179	-2.513	902984.552224	375881.474913	186-32-18	179-57-50	9.362
7-28K	-149584.102	-10.630	-41316.245	13.361	439191.684350	-1998593.186822	95-15-47	88-43-29	14.488
合計				倍面積 面積	742.292001 371.14	-742.292001 371.14			79.797

面積 (座標法) 計算書

地番 = 7-2
測点名

	[1] X (i)	[2] X (i+1)-X (i-1)	[3] Y (i)	[4] Y (i+1)-Y (i-1)	[2]*[3]	[1]*[4]	方向角	夾角	距離
7-14	-149558.420	-10.785	-41298.872	-5.075	445408.334520	759008.981500	186-13-33	100-10-21	10.576
7-29	-149568.934	-11.597	-41300.019	18.174	478956.320343	-2718265.806516	93-12-30	86-58-57	19.351
7-15	-149570.017	9.226	-41280.698	19.892	-380855.719748	-2975246.778164	3-10-13	89-57-43	10.325
7-7	-149559.708	12.982	-41280.127	-2.245	-535898.608714	335761.544460	313-30-28	130-20-15	3.883
7-6	-149557.035	2.232	-41282.943	-6.991	-92143.528776	1045553.231685	263-58-13	130-27-45	4.198
7-5	-149557.476	-1.114	-41287.118	-12.001	45993.849452	1794839.269476	265-05-06	181-06-53	7.855
7-4	-149558.149	-0.944	-41294.944	-11.754	38982.427136	1757906.483346	266-03-12	180-58-06	3.937
合計				倍面積 面積	443.074213 221.53	-443.074213 221.53			60.125

面積 (座標法) 計算書

地番 = 7-3
測点名

	[1] X (i)	[2] X (i+1)-X (i-1)	[3] Y (i)	[4] Y (i+1)-Y (i-1)	[2]*[3]	[1]*[4]	方向角	夾角	距離
7-47K	-149590.285	1.722	-41281.835	20.556	-71087.319870	-3074977.898460	3-13-27	90-02-10	2.863
7-46	-149587.427	3.986	-41281.674	-20.078	-164548.752564	3003416.359306	273-11-24	89-57-57	20.270
7-31	-149586.299	-1.722	-41301.913	-20.556	71121.894186	3074895.962244	186-20-49	93-09-25	2.868
7-54K	-149589.149	-3.986	-41302.230	20.078	164630.688780	-3003450.933622	93-11-17	86-50-28	20.427
合計				倍面積 面積	116.510532 58.25	-116.510532 58.25			46.428

面積 (座標法) 計算書

地番 = 7-4
測点名

	[1] X (i)	[2] X (i+1)-X (i-1)	[3] Y (i)	[4] Y (i+1)-Y (i-1)	[2]*[3]	[1]*[4]	方向角	夾角	距離
7-48K	-149603.983	12.523	-41282.605	21.917	-516982.062415	-3278870.495411	3-13-02	90-02-13	13.720
7-47K	-149590.285	14.834	-41281.835	-19.625	-612374.740390	2935709.343125	273-11-17	89-58-15	20.427
7-54K	-149589.149	-12.523	-41302.230	-21.917	517227.826290	3278545.378633	186-21-29	93-10-12	13.744
7-53K	-149602.808	-14.834	-41303.752	19.625	612699.857168	-2935955.107000	93-10-49	86-49-20	21.180
合計				倍面積 面積	570.880653 285.44	-570.880653 285.44			69.071

面積 (座標法) 計算書

地番 = 7-5
測点名

	[1] X (i)	[2] X (i+1)-X (i-1)	[3] Y (i)	[4] Y (i+1)-Y (i-1)	[2]*[3]	[1]*[4]	方向角	夾角	距離
7-53K	-149602.808	0.763	-41303.752	-21.193	-31514.762776	3170532.309944	186-22-15	93-11-26	0.415
7-52	-149603.220	-1.588	-41303.798	21.124	65590.431224	-3160218.419280	93-10-46	86-48-31	21.203
7-49	-149604.396	-0.763	-41282.628	21.193	31498.645164	-3170565.964428	3-11-15	90-00-29	0.414
7-48K	-149603.983	1.588	-41282.605	-21.124	-65556.776740	3160234.536892	273-10-49	89-59-34	21.180
合計				倍面積 面積	17.536872 8.76	-17.536872 8.76			43.212

面積 (座標法) 計算書

地番 = 7-6
測点名

	[1] X (i)	[2] X (i+1)-X (i-1)	[3] Y (i)	[4] Y (i+1)-Y (i-1)	[2]*[3]	[1]*[4]	方向角	夾角	距離
7-50	-149607.123	1.545	-41282.777	21.467	-63781.890465	-3211616.109441	3-07-39	89-57-14	2.731
7-49	-149604.396	3.903	-41282.628	-21.021	-161126.097084	3144834.008316	273-10-46	90-03-07	21.203
7-52	-149603.220	-0.406	-41303.798	-21.346	16769.341988	3193430.334120	186-20-53	93-10-07	1.592
7-37	-149604.802	-2.721	-41303.974	-0.297	112388.113254	44432.626194	186-03-50	179-42-57	1.145
7-51K	-149605.941	-2.321	-41304.095	21.197	95866.804495	-3171197.131377	93-10-25	87-06-35	21.351
合計				倍面積 面積	116.272188 58.13	-116.272188 58.13			48.022

面積 (座標法) 計算書

地番 = 7-7
測点名

	[1] X (i)	[2] X (i+1)-X (i-1)	[3] Y (i)	[4] Y (i+1)-Y (i-1)	[2]*[3]	[1]*[4]	方向角	夾角	距離
7-50	-149607.123	12.629	-41282.777	-20.669	-521360.190733	3092229.625287	273-10-25	89-55-43	21.351
7-51K	-149605.941	-10.226	-41304.095	-22.528	422375.675470	3370322.638848	186-03-16	92-52-51	11.472
7-40	-149617.349	-12.271	-41305.305	14.342	506857.397655	-2145812.019358	93-10-34	87-07-18	15.576
7-41	-149618.212	-1.221	-41289.753	21.879	50414.788413	-3273496.860348	93-14-19	180-03-45	6.337
7-19	-149618.570	11.089	-41283.426	6.976	-457791.910914	-1043739.144320	3-14-42	90-00-23	11.465
合計				倍面積 面積	495.759891 247.87	-495.759891 247.87			66.201

面積 (座標法) 計算書

地番 = 7-8
測点名

	[1] X (i)	[2] X (i+1)-X (i-1)	[3] Y (i)	[4] Y (i+1)-Y (i-1)	[2] * [3]	[1] * [4]	方向角	夾角	距離
7-21K	-149623.310	4.374	-41283.690	6.717	-180574.860060	-1005019.773270	3-11-16	89-56-30	4.747
7-19	-149618.570	5.098	-41283.426	-6.063	-210462.905748	907137.389910	273-14-19	90-03-03	6.337
7-41	-149618.212	-4.374	-41289.753	-6.717	180601.379622	1004985.530004	184-42-42	91-28-23	4.748
7-43K	-149622.944	-5.098	-41290.143	6.063	210497.149014	-907163.909472	93-14-46	88-32-04	6.463
合計				倍面積 面積	60.762828 30.38	-60.762828 30.38			22.295

面積 (座標法) 計算書

地番 = 7-9
測点名

	[1] X (i)	[2] X (i+1)-X (i-1)	[3] Y (i)	[4] Y (i+1)-Y (i-1)	[2] * [3]	[1] * [4]	方向角	夾角	距離
7-43K	-149622.944	-8.871	-41290.143	-7.215	366284.858553	1079529.540960	184-42-57	91-28-11	9.268
7-105	-149632.181	-9.291	-41290.905	2.232	383633.798355	-333979.027992	91-02-00	86-19-03	2.994
7-111	-149632.235	-0.055	-41287.911	5.526	2270.835105	-826867.730610	90-01-21	178-59-21	2.532
7-106	-149632.236	1.325	-41285.379	3.798	-54703.127175	-568303.232328	43-40-26	133-39-05	1.833
7-8	-149630.910	8.926	-41284.113	1.689	-368501.992638	-252726.606990	3-11-08	139-30-42	7.612
7-21K	-149623.310	7.966	-41283.690	-6.030	-328865.874540	902228.559300	273-14-46	90-03-38	6.463
合計				倍面積 面積	118.497660 59.24	-118.497660 59.24			30.702

面積 (座標法) 計算書

地番 = 7-10
測点名

	[1] X (i)	[2] X (i+1)-X (i-1)	[3] Y (i)	[4] Y (i+1)-Y (i-1)	[2] * [3]	[1] * [4]	方向角	夾角	距離
7-113K	-149632.168	-14.053	-41292.419	0.356	580282.364207	-53269.051808	90-29-31	85-46-37	1.514
7-105	-149632.181	13.956	-41290.905	2.666	-576255.870180	-398919.394546	4-42-52	94-13-21	14.016
7-41	-149618.212	14.053	-41289.753	-0.356	-580244.898909	53264.083472	273-11-18	88-28-26	1.510
7-114K	-149618.128	-13.956	-41291.261	-2.666	576260.838516	398881.929248	184-42-54	91-31-36	14.088
合計				倍面積 面積	42.433634 21.21	-42.433634 21.21			31.128

面積 (座標法) 計算書

地番 = 7-11
測点名

	[1] X (i)	[2] X (i+1)-X (i-1)	[3] Y (i)	[4] Y (i+1)-Y (i-1)	[2] * [3]	[1] * [4]	方向角	夾角	距離
7-114K	-149618.128	14.819	-41291.261	-12.886	-611895.196759	1927979.197408	273-10-29	88-27-35	14.066
7-40	-149617.349	-13.915	-41305.305	-15.568	574763.319075	2329242.889232	185-55-17	92-44-48	14.773
7-101	-149632.043	-14.819	-41306.829	12.886	612125.898951	-1928158.506098	90-29-49	84-34-32	14.411
7-113K	-149632.168	13.915	-41292.419	15.568	-574584.010385	-2329473.591424	4-42-54	94-13-05	14.088
合計				倍面積 面積	410.010882 205.00	-410.010882 205.00			57.338

面積 (座標法) 計算書

地番 = 7-12
測点名

	[1] X (i)	[2] X (i+1)-X (i-1)	[3] Y (i)	[4] Y (i+1)-Y (i-1)	[2] * [3]	[1] * [4]	方向角	夾角	距離
7-56K	-149617.646	-11.994	-41320.101	-16.160	495593.291394	2417821.159360	186-35-07	93-19-46	12.914
7-11	-149630.475	-14.398	-41321.582	-0.101	594948.137636	15112.677975	138-40-01	132-04-54	2.090
7-100	-149632.044	-1.568	-41320.202	14.753	64790.076736	-2207521.545132	89-59-45	131-19-44	13.373
7-101	-149632.043	13.563	-41306.829	14.780	-560244.521727	-2211561.595540	5-55-23	95-55-38	13.635
7-57K	-149618.481	14.397	-41305.422	-13.272	-594674.160534	1985736.479832	273-15-21	87-19-58	14.703
合計				倍面積 面積	412.823505 206.41	-412.823505 206.41			56.715

面積 (座標法) 計算書

地番 = 7-13
測点名

	[1] X (i)	[2] X (i+1)-X (i-1)	[3] Y (i)	[4] Y (i+1)-Y (i-1)	[2] * [3]	[1] * [4]	方向角	夾角	距離
7-115K	-149608.208	1.849	-41304.335	14.857	-76371.715415	-2222729.146256	6-03-01	89-55-11	3.425
7-37	-149604.802	4.960	-41303.974	-14.103	-204867.711040	2109876.522606	276-07-56	90-04-55	14.547
7-26	-149603.248	-1.849	-41318.438	-14.857	76397.791862	2222655.455536	186-35-16	90-27-20	3.426
7-116K	-149606.651	-4.960	-41318.831	14.103	204941.401760	-2109902.599053	96-07-50	89-32-34	14.579
合計				倍面積 面積	99.767167 49.88	-99.767167 49.88			35.977

面積 (座標法) 計算書

地番 = 7-14
測点名

	[1] X (i)	[2] X (i+1)-X (i-1)	[3] Y (i)	[4] Y (i+1)-Y (i-1)	[2] * [3]	[1] * [4]	方向角	夾角	距離
7-33K	-149593.457	-1.624	-41317.316	-14.796	67099.321184	2213384.789772	186-32-40	91-17-03	2.974
7-27K	-149596.412	-4.288	-41317.655	14.128	177170.104640	-2113498.108736	95-15-52	88-43-12	14.528
7-36K	-149597.745	1.624	-41303.188	14.796	-67076.377312	-2213448.235020	6-20-55	91-05-03	2.975
7-45K	-149594.788	4.288	-41302.859	-14.128	-177106.659392	2113475.164864	275-15-37	88-54-42	14.518
合計				倍面積 面積	86.389120 43.19	-86.389120 43.19			34.995

面積 (座標法) 計算書

地番 = 7-15
測点名

	[1] X (i)	[2] X (i+1)-X (i-1)	[3] Y (i)	[4] Y (i+1)-Y (i-1)	[2] * [3]	[1] * [4]	方向角	夾角	距離
7-28K	-149584.102	-8.026	-41316.245	-15.498	331604.182370	2318254.412796	186-31-52	91-16-05	9.416
7-33K	-149593.457	-10.686	-41317.316	13.386	441516.838776	-2002458.015402	95-15-37	88-43-45	14.518
7-45K	-149594.788	7.158	-41302.859	15.403	-295645.864722	-2304208.519564	6-21-31	91-05-54	8.542
7-31	-149586.299	9.357	-41301.913	1.041	-386461.999941	-155719.337259	6-14-46	179-53-15	0.873
7-55K	-149585.431	2.197	-41301.818	-14.332	-90740.094146	2143858.397092	275-15-47	89-01-01	14.488
合計				倍面積 面積	273.062337 136.53	-273.062337 136.53			47.837

面積 (座標法) 計算書

地番 = 7-16
測点名

	[1] X (i)	[2] X (i+1)-X (i-1)	[3] Y (i)	[4] Y (i+1)-Y (i-1)	[2] * [3]	[1] * [4]	方向角	夾角	距離
7-27K	-149596.412	-5.503	-41317.655	-15.250	227371.055465	2281345.283000	186-32-03	91-16-11	6.881
7-26	-149603.248	-8.390	-41318.438	13.681	346661.694820	-2046722.035888	96-07-56	89-35-53	14.547
7-37	-149604.802	5.503	-41303.974	15.250	-227295.768922	-2281473.230500	6-21-19	90-13-23	7.101
7-36K	-149597.745	8.390	-41303.188	-13.681	-346533.747320	2046646.749345	275-15-52	88-54-33	14.528
合計				倍面積 面積	203.234043 101.61	-203.234043 101.61			43.057

面積 (座標法) 計算書

地番 = 7-17
測点名

	[1] X (i)	[2] X (i+1)-X (i-1)	[3] Y (i)	[4] Y (i+1)-Y (i-1)	[2] * [3]	[1] * [4]	方向角	夾角	距離
7-29	-149568.934	-16.282	-41300.019	-21.215	672446.909358	3173104.934810	186-13-29	93-00-59	17.468
7-31	-149586.299	-18.493	-41301.913	18.345	763796.277109	-2744160.655155	93-11-24	86-57-55	20.270
7-46	-149587.427	16.282	-41281.674	21.215	-672148.216068	-3173497.263805	3-12-31	90-01-07	17.437
7-15	-149570.017	18.493	-41280.698	-18.345	-763403.948114	2743861.961865	273-12-30	89-59-59	19.351
合計				倍面積 面積	691.022285 345.51	-691.022285 345.51			74.526

面積 (座標法) 計算書

地番 = 7-18
測点名

	[1] X (i)	[2] X (i+1)-X (i-1)	[3] Y (i)	[4] Y (i+1)-Y (i-1)	[2] * [3]	[1] * [4]	方向角	夾角	距離
7-56K	-149617.646	-11.830	-41320.101	13.409	488816.794830	-2006223.015214	93-15-21	86-40-01	14.703
7-57K	-149618.481	0.297	-41305.422	14.796	-12267.710334	-2213755.044876	5-54-03	92-38-42	1.138
7-40	-149617.349	10.273	-41305.305	1.087	-424329.398265	-162634.058363	6-03-26	180-09-23	9.192
7-115K	-149608.208	10.698	-41304.335	-13.526	-441873.775830	2023600.621408	276-07-50	90-04-24	14.579
7-116K	-149606.651	-9.438	-41318.831	-15.766	389967.126978	2358698.459666	186-35-20	90-27-30	11.068
合計				倍面積 面積	313.037379 156.51	-313.037379 156.51			50.680