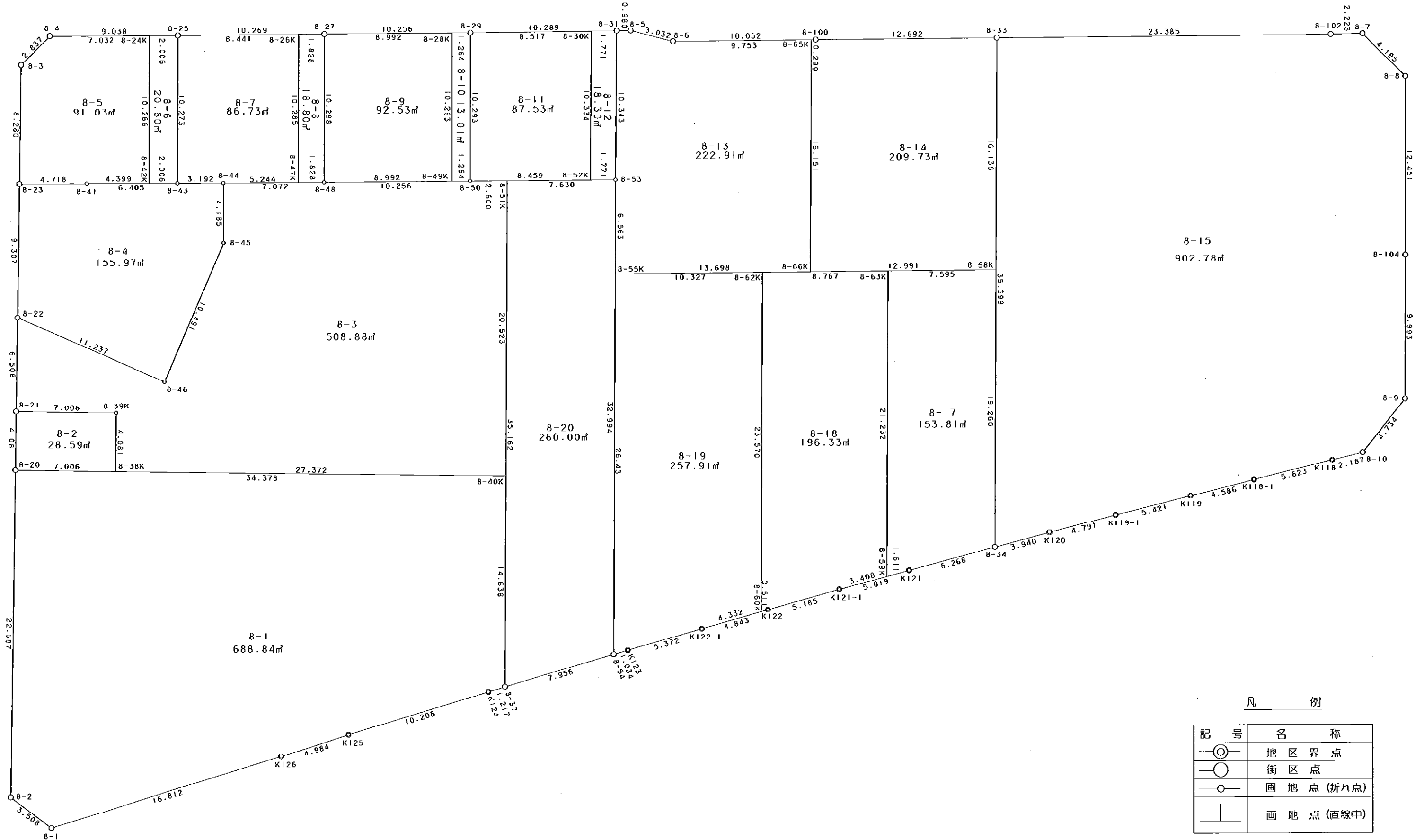
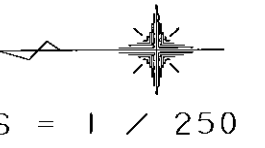


8街区



凡例

記号	名称
⊙	地区界点
○	街区点
○	画地点 (折れ点)
┆	画地点 (直線中)

面積 (座標法) 計算書

地番 = 8街区
測点名

	[1] X (i)	[2] X (i+1)-X (i-1)	[3] Y (i)	[4] Y (i+1)-Y (i-1)	[2]*[3]	[1]*[4]	方向角	夾角	距離
8-2	-149640.256	-2.536	-41422.751	-24.787	105048.096536	3709133.025472	216-48-28	126-07-06	3.508
8-1	-149643.065	-18.872	-41424.853	2.860	781769.825816	-427979.165900	162-50-01	126-01-33	16.812
K126	-149659.128	-20.824	-41419.891	6.436	862527.810184	-963206.147808	162-47-51	179-57-50	4.984
K125	-149663.889	-14.530	-41418.417	4.428	601809.599010	-662711.700492	163-10-32	180-22-41	10.206
K124	-149673.658	-10.936	-41415.463	3.298	452919.503368	-493623.724084	163-34-33	180-24-01	1.217
8-37	-149674.825	-8.809	-41415.119	2.556	364825.783271	-382568.852700	163-51-24	180-16-51	7.956
8-54	-149682.467	-8.635	-41412.907	2.501	357600.451945	-374355.849967	163-46-23	179-54-59	1.034
K123	-149683.460	-6.159	-41412.618	1.764	255060.314262	-264041.623440	164-03-53	180-17-30	5.372
K122-1	-149688.626	-9.828	-41411.143	2.786	406988.713404	-417032.512036	164-17-37	180-13-44	4.843
K122	-149693.288	-9.662	-41409.832	2.684	400101.796784	-401776.784992	164-38-42	180-21-05	5.185
K121-1	-149698.288	-9.844	-41408.459	2.685	407624.870396	-401939.903280	164-50-42	180-12-00	5.019
K121	-149703.132	-10.903	-41407.147	2.919	451462.123741	-436983.442308	165-08-45	180-18-03	6.268
8-34	-149709.191	-9.871	-41405.540	2.604	408714.085340	-389842.733364	165-20-35	180-11-50	3.940
K120	-149713.003	-8.453	-41404.543	2.186	349992.601979	-327272.624558	165-37-49	180-17-14	4.791
K119-1	-149717.644	-9.897	-41403.354	2.516	409768.994538	-376689.592304	165-49-50	180-12-01	5.421
K119	-149722.900	-9.706	-41402.027	2.435	401848.074062	-364575.261500	166-01-06	180-11-16	4.586
K118-1	-149727.350	-9.911	-41400.919	2.450	410324.508209	-366832.007500	166-11-37	180-10-31	5.623
K118	-149732.811	-7.586	-41399.577	1.860	314057.191122	-278503.028460	166-18-02	180-06-25	2.187
8-10	-149734.936	-5.068	-41399.059	4.226	209810.431012	-632779.839536	128-26-19	142-08-17	4.734
8-9	-149737.879	-3.000	-41395.351	13.701	124186.053000	-2051558.680179	90-19-37	141-53-18	9.993
8-104	-149737.936	-0.094	-41385.358	22.444	3890.223652	-3360718.235584	90-10-13	179-50-36	12.451
8-8	-149737.973	2.941	-41372.907	15.405	-121677.719487	-2306713.474065	44-46-05	134-35-52	4.195
8-7	-149734.995	5.201	-41369.953	2.914	-215165.125553	-436327.775430	358-58-09	134-12-04	2.223
8-102	-149732.772	25.608	-41369.993	-0.189	-1059402.780744	28299.493908	359-38-06	180-39-57	23.385
8-33	-149709.387	36.077	-41370.142	-0.228	-1492510.612934	34133.740236	359-38-36	180-00-30	12.692
8-100	-149696.695	22.744	-41370.221	-0.166	-940924.306424	24849.651370	359-30-15	179-51-39	10.052
8-6	-149686.643	12.991	-41370.308	0.657	-537441.671228	-98344.124451	14-12-21	194-42-06	3.032
8-5	-149683.704	3.919	-41369.564	0.738	-162127.321316	-110466.573552	359-38-57	165-26-36	0.980
8-31	-149682.724	11.268	-41369.570	-0.116	-466152.314760	17363.195984	359-23-15	179-44-18	10.289
8-29	-149672.436	20.544	-41369.680	-0.185	-849898.705920	27689.400660	359-34-52	180-11-37	10.256
8-27	-149662.180	20.525	-41369.755	-0.150	-849114.221375	22449.327000	359-34-54	180-00-02	10.269
8-25	-149651.911	19.307	-41369.830	-0.135	-798727.307810	20203.007985	359-37-11	180-02-17	9.038
8-4	-149642.873	11.045	-41369.890	-2.065	-456930.435050	309012.532745	315-01-43	135-24-32	2.837
8-3	-149640.866	2.102	-41371.895	-10.284	-86963.723290	1538906.665944	270-39-27	135-37-44	8.280
8-23	-149640.771	0.208	-41380.174	-17.585	-8607.076192	2631432.958035	270-41-44	180-02-17	9.307
8-22	-149640.658	0.198	-41389.480	-15.811	-8195.117040	2365968.443638	270-44-55	180-03-11	6.506
8-21	-149640.573	0.129	-41395.985	-10.586	-5340.082065	1584095.105778	270-37-04	179-52-09	4.081
8-20	-149640.529	0.317	-41400.066	-26.766	-13123.820922	4005278.399214	270-41-22	180-04-18	22.687
合計				倍面積 面積	8028.709521 4014.35	-8028.709521 4014.35			276.239

地番	筆種別	面積	坪数
8-1	筆界	688.84	208.37
8-2	筆界	28.59	8.64
8-3	筆界	508.88	153.93
8-4	筆界	155.97	47.18
8-5	筆界	91.03	27.53
8-6	筆界	20.60	6.23
8-7	筆界	86.73	26.23
8-8	筆界	18.80	5.68
8-9	筆界	92.53	27.99
8-10	筆界	13.01	3.93
8-11	筆界	87.53	26.48
8-12	筆界	18.30	5.53
8-13	筆界	222.91	67.43
8-14	筆界	209.73	63.44
8-15	筆界	902.78	273.09
8-17	筆界	153.81	46.52
8-18	筆界	196.33	59.39
8-19	筆界	257.91	78.01
8-20	筆界	260.00	78.65
	筆合	4014.28	1214.25

面積 (座標法) 計算書

地番 = 8-1
測点名

	[1] X (i)	[2] X (i+1)-X (i-1)	[3] Y (i)	[4] Y (i+1)-Y (i-1)	[2] * [3]	[1] * [4]	方向角	夾角	距離
8-20	-149640.529	34.648	-41400.066	-22.270	-1434429.486768	3332494.580830	270-41-22	89-59-52	22.687
8-2	-149640.256	-2.536	-41422.751	-24.787	105048.096536	3709133.025472	216-48-28	126-07-06	3.508
8-1	-149643.065	-18.872	-41424.853	2.860	781769.825816	-427979.165900	162-50-01	126-01-33	16.812
K126	-149659.128	-20.824	-41419.891	6.436	862527.810184	-963206.147808	162-47-51	179-57-50	4.984
K125	-149663.889	-14.530	-41418.417	4.428	601809.599010	-662711.700492	163-10-32	180-22-41	10.206
K124	-149673.658	-10.936	-41415.463	3.298	452919.503368	-493623.724084	163-34-33	180-24-01	1.217
8-37	-149674.825	-1.246	-41415.119	14.982	51603.238274	-2242428.228150	90-18-33	106-44-00	14.638
8-40K	-149674.904	34.296	-41400.481	15.053	-1419870.896376	-2253056.329912	0-41-30	90-22-57	34.378
合計				倍面積 面積	1377.690044 688.84	-1377.690044 688.84			108.430

面積 (座標法) 計算書

地番 = 8-2
測点名

	[1] X (i)	[2] X (i+1)-X (i-1)	[3] Y (i)	[4] Y (i+1)-Y (i-1)	[2] * [3]	[1] * [4]	方向角	夾角	距離
8-39K	-149647.578	6.961	-41396.070	4.166	-288158.043270	-623431.809948	0-41-43	90-04-39	7.006
8-21	-149640.573	7.049	-41395.985	-3.996	-291800.298265	597963.729708	270-37-04	89-55-21	4.081
8-20	-149640.529	-6.961	-41400.066	-4.166	288185.859426	623402.443814	180-41-43	90-04-39	7.006
8-38K	-149647.534	-7.049	-41400.151	3.996	291829.664399	-597991.545864	90-37-04	89-55-21	4.081
合計				倍面積 面積	57.182290 28.59	-57.182290 28.59			22.174

面積 (座標法) 計算書

地番 = 8-3
測点名

	[1] X (i)	[2] X (i+1)-X (i-1)	[3] Y (i)	[4] Y (i+1)-Y (i-1)	[2] * [3]	[1] * [4]	方向角	夾角	距離
8-21	-149640.573	-6.920	-41395.985	-6.590	286460.216200	986131.376070	180-41-43	89-56-48	7.006
8-39K	-149647.578	-6.961	-41396.070	-4.166	288158.043270	623431.809948	270-37-04	269-55-21	4.081
8-38K	-149647.534	-27.326	-41400.151	-4.411	1131300.526226	660095.272474	180-41-27	90-04-23	27.372
8-40K	-149674.904	-27.480	-41400.481	20.193	1137685.217880	-3022385.336472	90-18-26	89-36-59	20.523
8-51K	-149675.014	2.490	-41379.958	20.508	-103036.095420	-3069535.187112	359-40-10	89-21-44	2.600
8-50	-149672.414	12.856	-41379.973	-0.085	-531980.932888	12722.155190	359-36-32	179-56-22	10.256
8-48	-149662.158	17.328	-41380.043	-0.110	-717033.385104	16462.837380	359-40-33	180-04-01	7.072
8-44	-149655.086	7.047	-41380.083	-4.225	-291605.444901	632292.738350	269-39-28	89-58-55	4.185
8-45	-149655.111	4.102	-41384.268	-13.830	-169758.267336	2069730.185130	293-09-56	203-30-28	10.491
8-46	-149650.984	14.453	-41393.913	-5.212	-598266.224589	779980.928608	23-14-03	270-04-07	11.237
8-22	-149640.658	10.411	-41389.480	-2.072	-430905.876280	310055.443376	270-44-55	67-30-52	6.506
合計				倍面積 面積	1017.777058 508.88	-1017.777058 508.88			111.329

面積 (座標法) 計算書

地番 = 8-4
測点名

	[1] X (i)	[2] X (i+1)-X (i-1)	[3] Y (i)	[4] Y (i+1)-Y (i-1)	[2] * [3]	[1] * [4]	方向角	夾角	距離
8-22	-149640.658	-10.213	-41389.480	-13.739	422710.759240	2055913.000262	203-14-03	112-32-19	11.237
8-46	-149650.984	-14.453	-41393.913	5.212	598266.224589	-779980.928608	113-09-56	89-55-53	10.491
8-45	-149655.111	-4.102	-41384.268	13.830	169758.267336	-2069730.185130	89-39-28	156-29-32	4.185
8-44	-149655.086	3.217	-41380.083	4.165	-133119.727011	-623313.433190	359-38-28	89-59-00	3.192
8-43	-149651.894	9.597	-41380.103	-0.040	-397124.848491	5986.075760	359-49-16	180-10-48	6.405
8-41	-149645.489	11.123	-41380.123	-0.071	-460271.108129	10624.829719	359-22-50	179-33-34	4.718
8-23	-149640.771	4.831	-41380.174	-9.357	-199907.620594	1400188.694247	270-41-44	91-18-54	9.307
合計				倍面積 面積	311.946940 155.97	-311.946940 155.97			49.535

面積 (座標法) 計算書

地番 = 8-5
測点名

	[1] X (i)	[2] X (i+1)-X (i-1)	[3] Y (i)	[4] Y (i+1)-Y (i-1)	[2] * [3]	[1] * [4]	方向角	夾角	距離
8-24K	-149649.905	7.015	-41369.843	10.219	-290209.448645	-1529272.379195	359-37-01	89-31-19	7.032
8-4	-149642.873	9.039	-41369.890	-2.052	-373942.435710	307067.175396	315-01-43	135-24-42	2.837
8-3	-149640.866	2.102	-41371.895	-10.284	-86963.723290	1538906.665944	270-39-27	135-37-44	8.280
8-23	-149640.771	-4.623	-41380.174	-8.228	191300.544402	1231244.263788	179-22-50	88-43-23	4.718
8-41	-149645.489	-9.117	-41380.123	0.065	377262.581391	-9726.956785	179-49-04	180-26-14	4.399
8-42K	-149649.888	-4.416	-41380.109	10.280	182734.561344	-1538400.848640	90-05-42	90-16-38	10.266
合計				倍面積 面積	182.079492 91.03	-182.079492 91.03			37.532

面積 (座標法) 計算書

地番 = 8-6
測点名

	[1] X (i)	[2] X (i+1)-X (i-1)	[3] Y (i)	[4] Y (i+1)-Y (i-1)	[2] * [3]	[1] * [4]	方向角	夾角	距離
8-42K	-149649.888	-1.989	-41380.109	-10.260	82305.036801	1535407.850880	179-49-43	89-44-01	2.006
8-43	-149651.894	-2.023	-41380.103	10.279	83711.948369	-1538271.818426	90-05-41	90-15-58	10.273
8-25	-149651.911	1.989	-41369.830	10.260	-82284.591870	-1535428.606860	359-37-43	89-32-02	2.006
8-24K	-149649.905	2.023	-41369.843	-10.279	-83691.192389	1538251.373495	270-05-42	90-27-59	10.266
合計				倍面積 面積	41.200911 20.60	-41.200911 20.60			24.551

面積 (座標法) 計算書

地番 = 8-7
測点名

	[1] X (i)	[2] X (i+1)-X (i-1)	[3] Y (i)	[4] Y (i+1)-Y (i-1)	[2] * [3]	[1] * [4]	方向角	夾角	距離
8-26K	-149660.352	8.419	-41369.768	10.223	-348292.076792	-1529977.778496	359-34-45	89-27-24	8.441
8-25	-149651.911	8.458	-41369.830	-10.335	-349906.022140	1546652.500185	270-05-41	90-30-56	10.273
8-43	-149651.894	-3.175	-41380.103	-10.253	131381.827025	1534380.869182	179-38-28	89-32-47	3.192
8-44	-149655.086	-8.436	-41380.083	0.050	349082.380188	-7482.754300	179-40-20	180-01-52	5.244
8-47K	-149660.330	-5.266	-41380.053	10.315	217907.359098	-1543746.303950	90-07-21	90-27-01	10.285
合計				倍面積 面積	173.467379 86.73	-173.467379 86.73			37.435

面積 (座標法) 計算書

地番 = 8-8
測点名

	[1] X (i)	[2] X (i+1)-X (i-1)	[3] Y (i)	[4] Y (i+1)-Y (i-1)	[2] * [3]	[1] * [4]	方向角	夾角	距離
8-47K	-149660.330	-1.806	-41380.053	-10.275	74732.375718	1537759.890750	179-41-12	89-33-51	1.828
8-48	-149662.158	-1.850	-41380.043	10.298	76553.079550	-1541220.903084	90-07-21	90-26-09	10.288
8-27	-149662.180	1.806	-41369.755	10.275	-74713.777530	-1537778.899500	359-35-33	89-28-12	1.828
8-26K	-149660.352	1.850	-41369.768	-10.298	-76534.070800	1541202.304896	270-07-21	90-31-48	10.285
合計				倍面積 面積	37.606938 18.80	-37.606938 18.80			24.229

面積 (座標法) 計算書

地番 = 8-9
測点名

	[1] X (i)	[2] X (i+1)-X (i-1)	[3] Y (i)	[4] Y (i+1)-Y (i-1)	[2] * [3]	[1] * [4]	方向角	夾角	距離
8-28K	-149671.172	8.970	-41369.689	10.227	-371086.110330	-1530687.076044	359-34-46	89-27-25	8.992
8-27	-149662.180	9.014	-41369.755	-10.354	-372906.971570	1549602.211720	270-07-21	90-32-35	10.288
8-48	-149662.158	-8.970	-41380.043	-10.227	371178.985710	1530594.889866	179-36-41	89-29-20	8.992
8-49K	-149671.150	-9.014	-41379.982	10.354	372999.157748	-1549695.087100	90-07-21	90-30-40	10.293
合計				倍面積 面積	185.061558 92.53	-185.061558 92.53			38.565

面積 (座標法) 計算書

地番 = 8-10
測点名

	[1] X (i)	[2] X (i+1)-X (i-1)	[3] Y (i)	[4] Y (i+1)-Y (i-1)	[2] * [3]	[1] * [4]	方向角	夾角	距離
8-49K	-149671.150	-1.242	-41379.982	-10.284	51393.937644	1539218.106600	179-35-31	89-28-10	1.264
8-50	-149672.414	-1.286	-41379.973	10.302	53214.645278	-1541925.209028	90-07-21	90-31-50	10.293
8-29	-149672.436	1.242	-41369.680	10.284	-51381.142560	-1539231.331824	359-35-31	89-28-10	1.264
8-28K	-149671.172	1.286	-41369.689	-10.302	-53201.420054	1541912.413944	270-07-21	90-31-50	10.293
合計				倍面積 面積	26.020308 13.01	-26.020308 13.01			23.114

面積 (座標法) 計算書

地番 = 8-11
測点名

	[1] X (i)	[2] X (i+1)-X (i-1)	[3] Y (i)	[4] Y (i+1)-Y (i-1)	[2] * [3]	[1] * [4]	方向角	夾角	距離
8-30K	-149680.953	8.437	-41369.589	10.243	-349035.222393	-1533182.001579	359-23-16	88-56-39	8.517
8-29	-149672.436	8.539	-41369.680	-10.384	-353255.697520	1554198.575424	270-07-21	90-44-05	10.293
8-50	-149672.414	-8.437	-41379.973	-10.243	349122.832201	1533094.536602	179-39-41	89-32-20	8.459
8-52K	-149680.873	-8.539	-41379.923	10.384	353343.162497	-1554286.185232	90-26-37	90-46-56	10.334
合計				倍面積 面積	175.074785 87.53	-175.074785 87.53			37.603

面積 (座標法) 計算書

地番 = 8-12
測点名

	[1] X (i)	[2] X (i+1)-X (i-1)	[3] Y (i)	[4] Y (i+1)-Y (i-1)	[2] * [3]	[1] * [4]	方向角	夾角	距離
8-52K	-149680.873	-1.691	-41379.923	-10.324	69973.449793	1545305.332852	179-40-35	89-13-58	1.771
8-53	-149682.644	-1.851	-41379.913	10.353	76594.218963	-1549664.413332	90-26-35	90-46-00	10.343
8-31	-149682.724	1.691	-41369.570	10.324	-69955.942870	-1545324.442576	359-23-07	88-56-32	1.771
8-30K	-149680.953	1.851	-41369.589	-10.353	-76575.109239	1549646.906409	270-26-37	91-03-30	10.334
合計				倍面積 面積	36.616647 18.30	-36.616647 18.30			24.219

面積 (座標法) 計算書

地番 = 8-13
測点名

	[1] X (i)	[2] X (i+1)-X (i-1)	[3] Y (i)	[4] Y (i+1)-Y (i-1)	[2] * [3]	[1] * [4]	方向角	夾角	距離
8-65K	-149696.396	9.664	-41370.224	16.067	-399801.844736	-2405171.994532	359-30-24	89-11-27	9.753
8-6	-149686.643	12.692	-41370.308	0.660	-525071.949136	-98793.184380	14-12-21	194-41-57	3.032
8-5	-149683.704	3.919	-41369.564	0.738	-162127.321316	-110466.573552	359-38-57	165-26-36	0.980
8-31	-149682.724	1.060	-41369.570	-10.349	-43851.744200	1549066.510676	270-26-35	90-47-38	10.343
8-53	-149682.644	0.115	-41379.913	-16.906	-4758.689995	2530534.779464	270-18-20	179-51-45	6.563
8-55K	-149682.609	-13.663	-41386.476	-6.462	565463.421588	967249.019358	179-34-39	89-16-19	13.698
8-66K	-149696.307	-13.787	-41386.375	16.252	570593.952125	-2432864.381364	90-18-57	90-44-18	16.151
合計				倍面積 面積	445.824330 222.91	-445.824330 222.91			60.520

面積 (座標法) 計算書

地番 = 8-14
測点名

	[1] X (i)	[2] X (i+1)-X (i-1)	[3] Y (i)	[4] Y (i+1)-Y (i-1)	[2] * [3]	[1] * [4]	方向角	夾角	距離
8-66K	-149696.307	-12.902	-41386.375	-16.056	533967.010250	2403523.905192	179-34-52	89-15-55	12.991
8-58K	-149709.298	-13.080	-41386.280	16.233	541332.542400	-2430231.034434	90-18-58	90-44-06	16.138
8-33	-149709.387	12.603	-41370.142	16.059	-521387.899626	-2404183.045833	359-38-36	89-19-38	12.692
8-100	-149696.695	12.991	-41370.221	-0.082	-537440.541011	12275.128990	359-25-31	179-46-55	0.299
8-65K	-149696.396	0.388	-41370.224	-16.154	-16051.646912	2418195.580984	270-18-57	90-53-26	16.151
合計				倍面積 面積	419.465101 209.73	-419.465101 209.73			58.271

面積 (座標法) 計算書

地番 = 8-15

測点名	[1] X (i)	[2] X (i+1)-X (i-1)	[3] Y (i)	[4] Y (i+1)-Y (i-1)	[2] * [3]	[1] * [4]	方向角	夾角	距離
8-34	-149709.191	-3.616	-41405.540	-34.401	149722.432640	5150145.879591	165-20-35	75-01-33	3.940
K120	-149713.003	-8.453	-41404.543	2.186	349992.601979	-327272.624558	165-37-49	180-17-14	4.791
K119-1	-149717.644	-9.897	-41403.354	2.516	409768.994538	-376689.592304	165-49-50	180-12-01	5.421
K119	-149722.900	-9.706	-41402.027	2.435	401848.074062	-364575.261500	166-01-06	180-11-16	4.586
K118-1	-149727.350	-9.911	-41400.919	2.450	410324.508209	-366832.007500	166-11-37	180-10-31	5.623
K118	-149732.811	-7.586	-41399.577	1.860	314057.191122	-278503.028460	166-18-02	180-06-25	2.187
8-10	-149734.936	-5.068	-41399.059	4.226	209810.431012	-632779.839536	128-26-19	142-08-17	4.734
8-9	-149737.879	-3.000	-41395.351	13.701	124186.053000	-2051558.680179	90-19-37	141-53-18	9.993
8-104	-149737.936	-0.094	-41385.358	22.444	3890.223652	-3360718.235584	90-10-13	179-50-36	12.451
8-8	-149737.973	2.941	-41372.907	15.405	-121677.719487	-2306713.474065	44-46-05	134-35-52	4.195
8-7	-149734.995	5.201	-41369.953	2.914	-215165.125553	-436327.775430	358-58-09	134-12-04	2.223
8-102	-149732.772	25.608	-41369.993	-0.189	-1059402.780744	28299.493908	359-38-06	180-39-57	23.385
8-33	-149709.387	23.581	-41370.142	-35.547	-975549.318502	5321719.579689	270-19-02	90-40-56	35.399
合計				倍面積 面積	1805.565928 902.78	-1805.565928 902.78			118.928

面積 (座標法) 計算書

地番 = 8-17

測点名	[1] X (i)	[2] X (i+1)-X (i-1)	[3] Y (i)	[4] Y (i+1)-Y (i-1)	[2] * [3]	[1] * [4]	方向角	夾角	距離
8-59K	-149701.577	-1.429	-41407.568	-20.811	59171.414672	3115439.518947	164-51-03	74-30-39	1.611
K121	-149703.132	-7.614	-41407.147	2.028	315274.017258	-303597.951696	165-08-45	180-17-42	6.268
8-34	-149709.191	-6.166	-41405.540	20.867	255306.559640	-3123981.688597	90-19-06	105-10-21	19.260
8-58K	-149709.298	7.488	-41386.280	19.204	-309900.464640	-2875017.358792	359-34-39	89-15-33	7.595
8-63K	-149701.703	7.721	-41386.336	-21.288	-319543.900256	3186849.853464	270-20-24	90-45-45	21.232
合計				倍面積 面積	307.626674 153.81	-307.626674 153.81			55.966

面積 (座標法) 計算書

地番 = 8-18

測点名	[1] X (i)	[2] X (i+1)-X (i-1)	[3] Y (i)	[4] Y (i+1)-Y (i-1)	[2] * [3]	[1] * [4]	方向角	夾角	距離
8-63K	-149701.703	8.641	-41386.336	21.168	-357619.329376	-3168885.649104	359-34-54	89-14-30	8.767
8-62K	-149692.936	8.907	-41386.400	-23.634	-368628.664800	3537842.849424	270-20-25	90-45-31	23.570
8-60K	-149692.796	-0.352	-41409.970	-23.432	14576.309440	3507601.595872	164-19-55	73-59-30	0.511
K122	-149693.288	-5.492	-41409.832	1.511	227422.797344	-226186.558168	164-38-42	180-18-47	5.185
K121-1	-149698.288	-8.289	-41408.459	2.264	343234.716651	-338916.924032	164-50-32	180-11-50	3.408
8-59K	-149701.577	-3.415	-41407.568	22.123	141406.844720	-3311847.987971	90-20-24	105-29-52	21.232
合計				倍面積 面積	392.673979 196.33	-392.673979 196.33			62.673

面積 (座標法) 計算書

地番 = 8-19
測点名

	[1] X (i)	[2] X (i+1)-X (i-1)	[3] Y (i)	[4] Y (i+1)-Y (i-1)	[2] * [3]	[1] * [4]	方向角	夾角	距離
8-62K	-149692.936	10.187	-41386.400	23.494	-421603.256800	-3516885.838384	359-34-42	89-14-17	10.327
8-55K	-149682.609	10.469	-41386.476	-26.507	-433275.017244	3967636.916763	270-18-28	90-43-46	26.431
8-54	-149682.467	-0.851	-41412.907	-26.142	35242.383857	3912999.052314	163-46-23	73-27-55	1.034
K123	-149683.460	-6.159	-41412.618	1.764	255060.314262	-264041.623440	164-03-53	180-17-30	5.372
K122-1	-149688.626	-9.336	-41411.143	2.648	386614.431048	-396375.481648	164-17-20	180-13-27	4.332
8-60K	-149692.796	-4.310	-41409.970	24.743	178476.970700	-3703848.851428	90-20-25	106-03-05	23.570
合計				倍面積 面積	515.825823 257.91	-515.825823 257.91			71.066

面積 (座標法) 計算書

地番 = 8-20
測点名

	[1] X (i)	[2] X (i+1)-X (i-1)	[3] Y (i)	[4] Y (i+1)-Y (i-1)	[2] * [3]	[1] * [4]	方向角	夾角	距離
8-37	-149674.825	-7.453	-41415.119	-32.949	308666.881907	4931635.808925	163-51-24	73-32-55	7.956
8-54	-149682.467	-7.819	-41412.907	35.206	323807.519833	-5269720.933202	90-18-27	106-27-03	32.994
8-53	-149682.644	7.453	-41379.913	32.949	-308404.491589	-4931893.437156	359-39-44	89-21-17	7.630
8-51K	-149675.014	7.819	-41379.958	-35.206	-323549.891602	5269458.542884	270-18-29	90-38-45	35.162
合計				倍面積 面積	520.018549 260.00	-520.018549 260.00			83.742