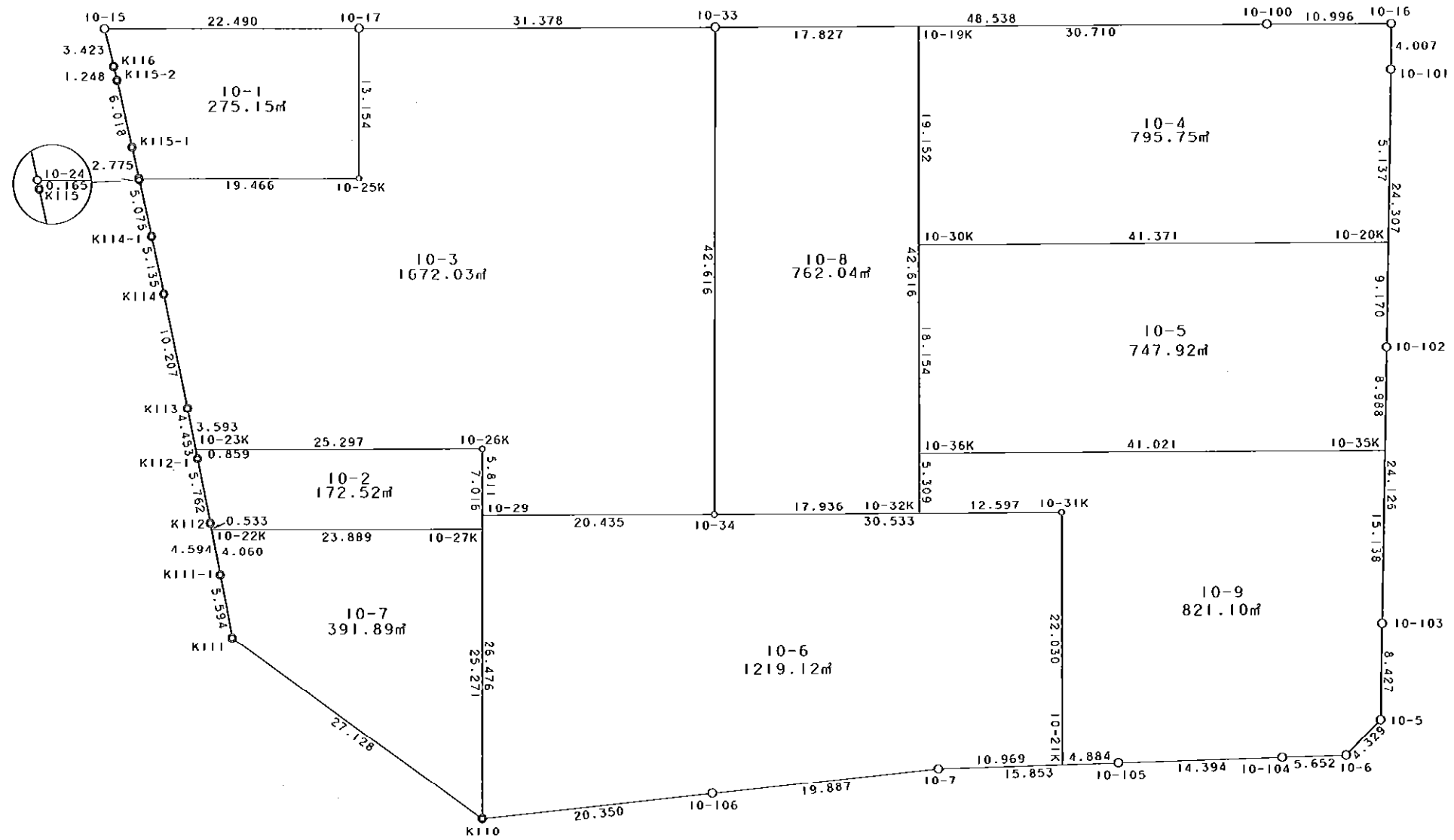


西部第4地区土地区画整理事業 出来形確認測量 (原子図)

10街区



S = 1 / 500



凡 例

記号	名称
⊙	地区界点
○	街区点
○	画地点 (折れ点)
	画地点 (直線中)

面積 (座標法) 計算書

地番 = 10街区

測点名	[1] X (i)	[2] X (i+1)-X (i-1)	[3] Y (i)	[4] Y (i+1)-Y (i-1)	[2] * [3]	[1] * [4]	方向角	夾 角	距 離
10-15	-149749.348	-3.218	-41395.674	-21.698	133211.278932	3249261.352904	166-37-17	76-20-10	3.423
K116	-149752.678	-4.545	-41394.882	1.079	188139.738690	-161583.139562	166-42-34	180-05-17	1.248
K115-2	-149753.893	-7.093	-41394.595	1.577	293611.862335	-236161.889261	167-37-19	180-54-45	6.018
K115-1	-149759.771	-8.592	-41393.305	1.869	355651.276560	-279901.011999	167-57-26	180-20-07	2.775
10-24	-149762.485	-2.876	-41392.726	0.611	119045.479976	-91504.878335	168-49-34	180-52-08	0.165
K115	-149762.647	-5.124	-41392.694	1.097	212096.164056	-164289.623759	167-53-11	179-03-37	5.075
K114-1	-149767.609	-9.989	-41391.629	2.115	413460.982081	-316758.493035	168-12-08	180-18-57	5.135
K114	-149772.636	-15.030	-41390.579	3.078	622100.402370	-461000.173608	168-32-21	180-20-13	10.207
K113	-149782.639	-14.371	-41388.551	2.893	594794.866421	-433321.174627	168-47-55	180-15-34	4.453
K112-1	-149787.007	-10.025	-41387.686	1.962	414911.552150	-293882.107734	169-01-32	180-13-37	5.762
K112	-149792.664	-10.171	-41386.589	1.948	420942.996719	-291796.109472	169-19-25	180-17-53	4.594
K111-1	-149797.178	-10.014	-41385.738	1.871	414436.780332	-280270.520038	169-29-37	180-10-12	5.594
K111	-149802.678	-21.431	-41384.718	22.978	886915.891458	-3442165.935084	125-57-42	136-28-05	27.128
K110	-149818.609	-13.936	-41362.760	42.210	576431.423360	-6323843.485890	84-22-26	138-24-44	20.350
10-106	-149816.614	3.909	-41342.508	40.047	-161607.863772	-5999705.940858	84-28-38	180-06-12	19.887
10-7	-149814.700	2.260	-41322.713	35.644	-93389.331380	-5339995.166800	88-44-58	184-16-20	15.853
10-105	-149814.354	0.680	-41306.864	30.239	-28088.667520	-4530236.250606	88-40-13	179-55-15	14.394
10-104	-149814.020	0.454	-41292.474	20.041	-18746.783196	-3002422.774820	88-47-01	180-06-48	5.652
10-6	-149813.900	3.177	-41286.823	8.716	-131168.236671	-1305777.952400	45-04-30	136-17-29	4.329
10-5	-149810.843	11.482	-41283.758	3.266	-474020.109356	-489282.213238	1-22-00	136-17-30	8.427
10-103	-149802.418	32.543	-41283.557	0.815	-1343490.795451	-122088.970670	1-27-30	180-05-30	24.126
10-102	-149778.300	48.418	-41282.943	1.207	-1998837.534174	-180782.408100	1-23-53	179-56-23	24.307
10-101	-149754.000	28.306	-41282.350	0.669	-1168538.199100	-100185.426000	1-05-13	179-41-20	4.007
10-16	-149749.994	4.084	-41282.274	-10.920	-168596.807016	1635269.934480	270-24-23	89-19-10	10.996
10-100	-149749.916	0.347	-41293.270	-59.533	-14328.764690	8915061.749228	270-19-03	179-54-40	48.538
10-33	-149749.647	0.456	-41341.807	-79.914	-18851.863992	11967093.290358	270-20-29	180-01-26	31.378
10-17	-149749.460	0.299	-41373.184	-53.867	-12370.582016	8066554.161820	270-17-07	179-56-38	22.490
合計				倍面積 面積	13715.157106 6857.57	-13715.157106 6857.57			336.311

地番	筆種別	面積	坪数
10-1	筆界	275.15	83.23
10-2	筆界	172.52	52.18
10-3	筆界	1672.03	505.79
10-4	筆界	795.75	240.71
10-5	筆界	747.92	226.24
10-6	筆界	1219.12	368.78
10-7	筆界	391.89	118.54
10-8	筆界	762.04	230.51
10-9	筆界	821.10	248.38
	筆合計	6857.52	2074.36

面積 (座標法) 計算書

地番 = 10-1
測点名

	[1] X (i)	[2] X (i+1)-X (i-1)	[3] Y (i)	[4] Y (i+1)-Y (i-1)	[2] * [3]	[1] * [4]	方向角	夾角	距離
10-15	-149749.348	-3.218	-41395.674	-21.698	133211.278932	3249261.352904	166-37-17	76-20-10	3.423
K116	-149752.678	-4.545	-41394.882	1.079	188139.738690	-161583.139562	166-42-34	180-05-17	1.248
K115-2	-149753.893	-7.093	-41394.595	1.577	293611.862335	-236161.889261	167-37-19	180-54-45	6.018
K115-1	-149759.771	-8.592	-41393.305	1.869	355651.276560	-279901.011999	167-57-26	180-20-07	2.775
10-24	-149762.485	-2.843	-41392.726	20.045	117679.520018	-3001989.011825	90-22-47	102-25-21	19.466
10-25K	-149762.614	13.025	-41373.260	19.542	-538886.711500	-2926661.002788	0-19-52	89-57-05	13.154
10-17	-149749.460	13.266	-41373.184	-22.414	-548856.658944	3356484.396440	270-17-07	89-57-15	22.490
合計				倍面積 面積	550.306091 275.15	-550.306091 275.15			68.574

面積 (座標法) 計算書

地番 = 10-2
測点名

	[1] X (i)	[2] X (i+1)-X (i-1)	[3] Y (i)	[4] Y (i+1)-Y (i-1)	[2] * [3]	[1] * [4]	方向角	夾角	距離
10-23K	-149786.164	-0.684	-41387.853	-25.130	28309.291452	3764126.301320	168-47-41	78-26-05	0.859
K112-1	-149787.007	-6.500	-41387.686	1.264	269019.959000	-189330.776848	169-01-32	180-13-51	5.762
K112	-149792.664	-6.181	-41386.589	1.196	255810.506609	-179152.026144	169-18-04	180-16-32	0.533
10-22K	-149793.188	-0.675	-41386.490	23.988	27935.880750	-3593238.993744	90-21-44	101-03-40	23.889
10-27K	-149793.339	6.865	-41362.601	23.934	-283954.255865	-3585153.775626	0-22-03	90-00-19	7.016
10-26K	-149786.323	7.175	-41362.556	-25.252	-296776.339300	3782404.228396	270-21-36	89-59-33	25.297
合計				倍面積 面積	345.042646 172.52	-345.042646 172.52			63.356

面積 (座標法) 計算書

地番 = 10-3
測点名

	[1] X (i)	[2] X (i+1)-X (i-1)	[3] Y (i)	[4] Y (i+1)-Y (i-1)	[2] * [3]	[1] * [4]	方向角	夾角	距離
10-17	-149749.460	-12.967	-41373.184	-31.453	536486.076928	4710069.765380	180-19-52	89-59-23	13.154
10-25K	-149762.614	-13.025	-41373.260	-19.542	538886.711500	2926661.002788	270-22-47	270-02-55	19.466
10-24	-149762.485	-0.033	-41392.726	-19.434	1365.959958	2910484.133490	168-49-34	78-26-47	0.165
K115	-149762.647	-5.124	-41392.694	1.097	212096.164056	-164289.623759	167-53-11	179-03-37	5.075
K114-1	-149767.609	-9.989	-41391.629	2.115	413460.982081	-316758.493035	168-12-08	180-18-57	5.135
K114	-149772.636	-15.030	-41390.579	3.078	622100.402370	-461000.173608	168-32-21	180-20-13	10.207
K113	-149782.639	-13.528	-41388.551	2.726	559904.317928	-408307.473914	168-47-58	180-15-37	3.593
10-23K	-149786.164	-3.684	-41387.853	25.995	152472.850452	-3893691.333180	90-21-36	101-33-38	25.297
10-26K	-149786.323	-5.970	-41362.556	25.260	246934.459320	-3783602.518980	180-21-53	270-00-17	5.811
10-29	-149792.134	-5.939	-41362.593	20.398	245652.439827	-3055459.949332	90-21-32	89-59-39	20.435
10-34	-149792.262	42.487	-41342.158	20.786	-1756504.266946	-3113581.957932	0-28-19	90-06-47	42.616
10-33	-149749.647	42.802	-41341.807	-31.026	-1769512.023214	4646132.547822	270-20-29	89-52-10	31.378
合計				倍面積 面積	3344.074260 1672.03	-3344.074260 1672.03			182.332

面積 (座標法) 計算書

地番 = 10-4
測点名

	[1] X (i)	[2] X (i+1)-X (i-1)	[3] Y (i)	[4] Y (i+1)-Y (i-1)	[2]*[3]	[1]*[4]	方向角	夾角	距離
10-20K	-149769.133	14.898	-41282.719	41.739	-615029.947662	-6251213.842287	1-23-49	91-04-17	15.137
10-101	-149754.000	19.139	-41282.350	0.445	-790102.896650	-66640.530000	1-05-13	179-41-24	4.007
10-16	-149749.994	4.084	-41282.274	-10.920	-168596.807016	1635269.934480	270-24-23	89-19-10	10.996
10-100	-149749.916	0.248	-41293.270	-41.706	-10240.730960	6245469.996696	270-19-02	179-54-39	30.710
10-19K	-149749.746	-18.982	-41323.980	-30.819	784411.788360	4615137.421974	180-19-34	90-00-32	19.152
10-30K	-149768.898	-19.387	-41324.089	41.261	801150.113443	-6179614.500378	90-19-32	89-59-58	41.371
合計				倍面積 面積	1591.519515 795.75	-1591.519515 795.75			121.373

面積 (座標法) 計算書

地番 = 10-5
測点名

	[1] X (i)	[2] X (i+1)-X (i-1)	[3] Y (i)	[4] Y (i+1)-Y (i-1)	[2]*[3]	[1]*[4]	方向角	夾角	距離
10-35K	-149787.285	8.752	-41283.172	41.249	-361310.321344	-6178575.718965	1-27-36	91-08-04	8.988
10-102	-149778.300	18.152	-41282.943	0.453	-749367.981336	-67849.569900	1-23-59	179-56-23	9.170
10-20K	-149769.133	9.402	-41282.719	-41.146	-388140.124038	6162400.746418	270-19-32	88-55-33	41.371
10-30K	-149768.898	-17.919	-41324.089	-41.473	740486.350791	6211365.506754	180-19-30	89-59-58	18.154
10-36K	-149787.052	-18.387	-41324.192	40.917	759827.918304	-6128836.806684	90-19-32	90-00-02	41.021
合計				倍面積 面積	1495.842377 747.92	-1495.842377 747.92			118.704

面積 (座標法) 計算書

地番 = 10-6
測点名

	[1] X (i)	[2] X (i+1)-X (i-1)	[3] Y (i)	[4] Y (i+1)-Y (i-1)	[2]*[3]	[1]*[4]	方向角	夾角	距離
10-31K	-149792.431	22.199	-41311.625	-30.411	-917076.763375	4555337.619141	270-19-02	90-00-00	30.533
10-34	-149792.262	0.297	-41342.158	-50.968	-12278.620926	7634612.009616	270-21-32	180-02-30	20.435
10-29	-149792.134	-26.347	-41362.593	-20.602	1089780.237771	3086017.544668	180-21-41	90-00-09	26.476
K110	-149818.609	-24.480	-41362.760	20.085	1012560.364800	-3009106.761765	84-22-26	84-00-45	20.350
10-106	-149816.614	3.909	-41342.508	40.047	-161607.863772	-5999705.940858	84-28-38	180-06-12	19.887
10-7	-149814.700	2.153	-41322.713	30.761	-88967.801089	-4608449.986700	88-45-05	184-16-27	10.969
10-21K	-149814.461	22.269	-41311.747	11.088	-919971.293943	-1661142.743568	0-19-02	91-33-57	22.030
合計				倍面積 面積	2438.259466 1219.12	-2438.259466 1219.12			150.680

面積 (座標法) 計算書

地番 = 10-7
測点名

	[1] X (i)	[2] X (i+1)-X (i-1)	[3] Y (i)	[4] Y (i+1)-Y (i-1)	[2] * [3]	[1] * [4]	方向角	夾角	距離
10-22K	-149793.188	-3.839	-41386.490	-23.137	158882.735110	3465764.990756	169-19-36	78-57-52	4.060
K111-1	-149797.178	-9.490	-41385.738	1.772	392750.653620	-265440.599416	169-29-37	180-10-01	5.594
K111	-149802.678	-21.431	-41384.718	22.978	886915.891458	-3442165.935084	125-57-42	136-28-05	27.128
K110	-149818.609	9.339	-41362.760	22.117	-386286.815640	-3313538.175253	0-21-38	54-23-56	25.271
10-27K	-149793.339	25.421	-41362.601	-23.730	-1051478.680021	3554595.934470	270-21-44	90-00-06	23.889
合計				倍面積 面積	783.784527 391.89	-783.784527 391.89			85.942

面積 (座標法) 計算書

地番 = 10-8
測点名

	[1] X (i)	[2] X (i+1)-X (i-1)	[3] Y (i)	[4] Y (i+1)-Y (i-1)	[2] * [3]	[1] * [4]	方向角	夾角	距離
10-19K	-149749.746	42.714	-41323.980	-17.585	-1765112.481720	2633349.283410	270-19-05	89-59-34	17.827
10-33	-149749.647	-42.516	-41341.807	-18.178	1757688.266412	2722149.083166	180-28-19	90-09-14	42.616
10-34	-149792.262	-42.714	-41342.158	17.585	1765888.936812	-2634096.927270	90-18-58	89-50-39	17.936
10-32K	-149792.361	42.516	-41324.222	18.178	-1756940.622552	-2722925.538258	0-19-31	90-00-33	42.616
合計				倍面積 面積	1524.098952 762.04	-1524.098952 762.04			120.995

面積 (座標法) 計算書

地番 = 10-9
測点名

	[1] X (i)	[2] X (i+1)-X (i-1)	[3] Y (i)	[4] Y (i+1)-Y (i-1)	[2] * [3]	[1] * [4]	方向角	夾角	距離
10-36K	-149787.052	-5.076	-41324.192	-41.050	209761.598592	6148758.484600	180-19-26	89-59-54	5.309
10-32K	-149792.361	-5.379	-41324.222	12.567	222282.990138	-1882440.600687	90-19-06	89-59-40	12.597
10-31K	-149792.431	-22.100	-41311.625	12.475	912986.912500	-1868660.576725	180-19-02	269-59-56	22.030
10-21K	-149814.461	-21.923	-41311.747	4.761	905677.429481	-713266.648821	88-44-41	88-25-39	4.884
10-105	-149814.354	0.441	-41306.864	19.273	-18216.327024	-2887372.044642	88-40-13	179-55-32	14.394
10-104	-149814.020	0.454	-41292.474	20.041	-18746.783196	-3002422.774820	88-47-01	180-06-48	5.652
10-6	-149813.900	3.177	-41286.823	8.716	-131168.236671	-1305777.952400	45-04-30	136-17-29	4.329
10-5	-149810.843	11.482	-41283.758	3.266	-474020.109356	-489282.213238	1-22-00	136-17-30	8.427
10-103	-149802.418	23.558	-41283.557	0.586	-972558.035806	-87784.216948	1-27-26	180-05-26	15.138
10-35K	-149787.285	15.366	-41283.172	-40.635	-634357.220952	6086606.325975	270-19-32	88-52-06	41.021
合計				倍面積 面積	1642.217706 821.10	-1642.217706 821.10			133.781